

Form **990-EZ****Short Form****Return of Organization Exempt From Income Tax**

Under section 501(c), 527, or 4947(a)(1) of the Internal Revenue Code (except private foundations)

OMB No 1545-0047

2019**Open to Public Inspection**Department of the Treasury
Internal Revenue Service

▶ Do not enter social security numbers on this form, as it may be made public.

▶ Go to www.irs.gov/Form990EZ for instructions and the latest information.

A For the 2019 calendar year, or tax year beginning , 2019, and ending , 20

B Check if applicable:
☐ Address change
☐ Name change
☐ Initial return
☐ Final return/Terminated
☐ Amended return
☐ Application pending

C Name of organization
American Chemical Society, Portland Section
 Number and street (or P.O. box if mail is not delivered to street address) Room/suite
808 NE Siskiyou St
 City or town, state or province, country, and ZIP or foreign postal code
Portland, OR 97212 **03**

D Employer identification number
93-6034605

E Telephone number
814-386-2264

F Group Exemption Number ▶ **0945**

G Accounting Method: ☒ Cash ☐ Accrual ☐ Other (specify) ▶

H Check ☐ if the organization is not required to attach Schedule B (Form 990, 990-EZ, or 990-PF).

I Website: ▶ www.acsportland.org

J Tax-exempt status (check only one) — ☒ 501(c)(3) ☐ 501(c) () ◀ (insert no.) ☐ 4947(a)(1) or ☐ 527

K Form of organization: ☒ Corporation ☐ Trust ☐ Association ☐ Other.

L Add lines 5b, 6c, and 7b to line 9 to determine gross receipts. If gross receipts are \$200,000 or more, or if total assets (Part II, column (B)) are \$500,000 or more, file Form 990 instead of Form 990-EZ. ▶ \$

Part I Revenue, Expenses, and Changes in Net Assets or Fund Balances (see the instructions for Part I)Check if the organization used Schedule O to respond to any question in this Part I ☐

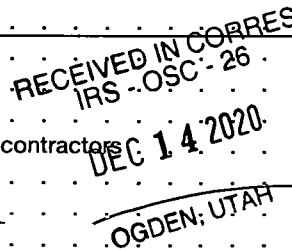
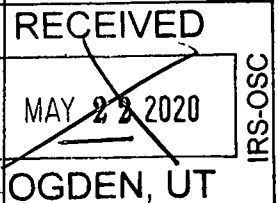
Revenue		Expenses		Net Assets	
1	Contributions, gifts, grants, and similar amounts received	1	71,740	18	Excess or (deficit) for the year (subtract line 17 from line 9)
2	Program service revenue including government fees and contracts	2	79,432	19	Net assets or fund balances at beginning of year (from line 27, column (A)) (must agree with end-of-year figure reported on prior year's return)
3	Membership dues and assessments	3		20	Other changes in net assets or fund balances (explain in Schedule O)
4	Investment income	4	11,547	21	Net assets or fund balances at end of year. Combine lines 18 through 20
5a	Gross amount from sale of assets other than inventory	5a			
b	Less: cost or other basis and sales expenses	5b			
c	Gain or (loss) from sale of assets other than inventory (subtract line 5b from line 5a)	5c			
6	Gaming and fundraising events:				
a	Gross income from gaming (attach Schedule G if greater than \$15,000)	6a			
b	Gross income from fundraising events (not including \$ of contributions from fundraising events reported on line 1) (attach Schedule G if the sum of such gross income and contributions exceeds \$15,000)	6b			
c	Less: direct expenses from gaming and fundraising events	6c			
d	Net income or (loss) from gaming and fundraising events (add lines 6a and 6b and subtract line 6c)	6d			
7a	Gross sales of inventory, less returns and allowances	7a			
b	Less: cost of goods sold	7b			
c	Gross profit or (loss) from sales of inventory (subtract line 7b from line 7a)	7c			
8	Other revenue (describe in Schedule O)	8			
9	Total revenue. Add lines 1, 2, 3, 4, 5c, 6d, 7c, and 8	9	162,719		
10	Grants and similar amounts paid (list in Schedule O)	10	21,795		
11	Benefits paid to or for members	11			
12	Salaries, other compensation, and employee benefits	12			
13	Professional fees and other payments to independent contractors	13	3,373		
14	Occupancy, rent, utilities, and maintenance	14			
15	Printing, publications, postage, and shipping	15	508		
16	Other expenses (describe in Schedule O)	16	105,657		
17	Total expenses. Add lines 10 through 16	17	131,334		
18	Excess or (deficit) for the year (subtract line 17 from line 9)	18	31,385		
19	Net assets or fund balances at beginning of year (from line 27, column (A)) (must agree with end-of-year figure reported on prior year's return)	19	337,426		
20	Other changes in net assets or fund balances (explain in Schedule O)	20	50,857		
21	Net assets or fund balances at end of year. Combine lines 18 through 20	21	419,668		

For Paperwork Reduction Act Notice, see the separate instructions.

Cat. No. 106421

Form **990-EZ** (2019)

SCANNED NOV 16 2021



Ap3

G9

Part II Balance Sheets (see the instructions for Part II)

Check if the organization used Schedule O to respond to any question in this Part II ☐

		(A) Beginning of year	(B) End of year
22	Cash, savings, and investments	337,426	22 419,668
23	Land and buildings	0	23 0
24	Other assets (describe in Schedule O)	0	24 0
25	Total assets	337,426	25 419,668
26	Total liabilities (describe in Schedule O)		26
27	Net assets or fund balances (line 27 of column (B) must agree with line 21)	337,426	27 419,668

Part III Statement of Program Service Accomplishments (see the instructions for Part III)

Check if the organization used Schedule O to respond to any question in this Part III ☐ Expenses

What is the organization's primary exempt purpose? Service to members

Describe the organization's program service accomplishments for each of its three largest program services, as measured by expenses. In a clear and concise manner, describe the services provided, the number of persons benefited, and other relevant information for each program title.

Expenses
(Required for section 501(c)(3) and 501(c)(4) organizations, optional for others.)

28	The section gives scholarships/awards to various students. The major scholarships are three \$3000 scholarships to local junior chemistry majors. Othersd include two Project SEED students , travel awards to the national meeting, and awards to winners of poster presentations. (Grants \$ 20,851) If this amount includes foreign grants, check here ► <input type="checkbox"/>	28a	21,795
29	The local section hosted the 2019 NORM meeting in Portland. All income and expenses were funneled through the section budget, making this by far the largest budget item(s) this year. There were over 600 attendees at the four-day meeting. (Grants \$) If this amount includes foreign grants, check here ► <input type="checkbox"/>	29a	77,025
30	The section hosts monthly dinner meetings, typically with a speaker. (Grants \$) If this amount includes foreign grants, check here ► <input type="checkbox"/>	30a	11,478
31	Other program services (describe in Schedule O) (Grants \$) If this amount includes foreign grants, check here ► <input type="checkbox"/>	31a	21,036
32	Total program service expenses (add lines 28a through 31a) ►	32	131,334

Part IV **List of Officers, Directors, Trustees, and Key Employees** (list each one even if not compensated—see the instructions for Part IV)

Check if the organization used Schedule O to respond to any question in this Part IV ☐

[illegible]

Part V Other Information (Note the Schedule A and personal benefit contract statement requirements in the instructions for Part V.) Check if the organization used Schedule O to respond to any question in this Part V ☐

	Yes	No
33 Did the organization engage in any significant activity not previously reported to the IRS? If "Yes," provide a detailed description of each activity in Schedule O	33	✓
34 Were any significant changes made to the organizing or governing documents? If "Yes," attach a conformed copy of the amended documents if they reflect a change to the organization's name. Otherwise, explain the change on Schedule O. See instructions	34	✓
35a Did the organization have unrelated business gross income of \$1,000 or more during the year from business activities (such as those reported on lines 2, 6a, and 7a, among others)?	35a	✓
b If "Yes" to line 35a, has the organization filed a Form 990-T for the year? If "No," provide an explanation in Schedule O	35b	
c Was the organization a section 501(c)(4), 501(c)(5), or 501(c)(6) organization subject to section 6033(e) notice, reporting, and proxy tax requirements during the year? If "Yes," complete Schedule C, Part III	35c	✓
36 Did the organization undergo a liquidation, dissolution, termination, or significant disposition of net assets during the year? If "Yes," complete applicable parts of Schedule N	36	✓
37a Enter amount of political expenditures, direct or indirect, as described in the instructions ▶ 37a		
b Did the organization file Form 1120-POL for this year?	37b	✓
38a Did the organization borrow from, or make any loans to, any officer, director, trustee, or key employee; or were any such loans made in a prior year and still outstanding at the end of the tax year covered by this return?	38a	✓
b If "Yes," complete Schedule L, Part II, and enter the total amount involved	38b	
39 Section 501(c)(7) organizations. Enter:		
a Initiation fees and capital contributions included on line 9	39a	
b Gross receipts, included on line 9, for public use of club facilities	39b	
40a Section 501(c)(3) organizations. Enter amount of tax imposed on the organization during the year under: section 4911 ▶ ; section 4912 ▶ ; section 4955 ▶		
b Section 501(c)(3), 501(c)(4), and 501(c)(29) organizations. Did the organization engage in any section 4958 excess benefit transaction during the year, or did it engage in an excess benefit transaction in a prior year that has not been reported on any of its prior Forms 990 or 990-EZ? If "Yes," complete Schedule L, Part I	40b	✓
c Section 501(c)(3), 501(c)(4), and 501(c)(29) organizations. Enter amount of tax imposed on organization managers or disqualified persons during the year under sections 4912, 4955, and 4958 ▶		
d Section 501(c)(3), 501(c)(4), and 501(c)(29) organizations. Enter amount of tax on line 40c reimbursed by the organization ▶		
e All organizations. At any time during the tax year, was the organization a party to a prohibited tax shelter transaction? If "Yes," complete Form 8886-T	40e	✓
41 List the states with which a copy of this return is filed ▶ <u>Oregon</u>		
42a The organization's books are in care of ▶ <u>David Reingold</u> Telephone no. ▶ <u>814-386-2264</u> Located at ▶ <u>808 NE Siskiyou St, Portland, OR</u> ZIP + 4 ▶ <u>97212-2270</u>		
b At any time during the calendar year, did the organization have an interest in or a signature or other authority over a financial account in a foreign country (such as a bank account, securities account, or other financial account)? If "Yes," enter the name of the foreign country ▶ See the instructions for exceptions and filing requirements for FinCEN Form 114, Report of Foreign Bank and Financial Accounts (FBAR).	42b	✓
c At any time during the calendar year, did the organization maintain an office outside the United States? If "Yes," enter the name of the foreign country ▶	42c	✓
43 Section 4947(a)(1) nonexempt charitable trusts filing Form 990-EZ in lieu of Form 1041 —Check here and enter the amount of tax-exempt interest received or accrued during the tax year ▶ 43		
44a Did the organization maintain any donor advised funds during the year? If "Yes," Form 990 must be completed instead of Form 990-EZ	44a	✓
b Did the organization operate one or more hospital facilities during the year? If "Yes," Form 990 must be completed instead of Form 990-EZ	44b	✓
c Did the organization receive any payments for indoor tanning services during the year?	44c	✓
d If "Yes" to line 44c, has the organization filed a Form 720 to report these payments? If "No," provide an explanation in Schedule O	44d	
45a Did the organization have a controlled entity within the meaning of section 512(b)(13)?	45a	✓
b Did the organization receive any payment from or engage in any transaction with a controlled entity within the meaning of section 512(b)(13)? If "Yes," Form 990 and Schedule R may need to be completed instead of Form 990-EZ. See instructions	45b	✓

46 Did the organization engage, directly or indirectly, in political campaign activities on behalf of or in opposition to candidates for public office? If "Yes," complete Schedule C, Part I

	Yes	No
46		<input checked="" type="checkbox"/>

Part VI Section 501(c)(3) Organizations Only

All section 501(c)(3) organizations must answer questions 47–49b and 52, and complete the tables for lines 50 and 51.

Check if the organization used Schedule O to respond to any question in this Part VI ☐

47 Did the organization engage in lobbying activities or have a section 501(h) election in effect during the tax year? If "Yes," complete Schedule C, Part II

	Yes	No
47		<input checked="" type="checkbox"/>

48 Is the organization a school as described in section 170(b)(1)(A)(ii)? If "Yes," complete Schedule E

48		<input checked="" type="checkbox"/>
-----------	--	-------------------------------------

49a Did the organization make any transfers to an exempt non-charitable related organization?

49a		<input checked="" type="checkbox"/>
------------	--	-------------------------------------

b If "Yes," was the related organization a section 527 organization?

49b		<input checked="" type="checkbox"/>
------------	--	-------------------------------------

50 Complete this table for the organization's five highest compensated employees (other than officers, directors, trustees, and key employees) who each received more than \$100,000 of compensation from the organization. If there is none, enter "None."

(a) Name and title of each employee	(b) Average hours per week devoted to position	(c) Reportable compensation (Forms W-2/1099-MISC)	(d) Health benefits, contributions to employee benefit plans, and deferred compensation	(e) Estimated amount of other compensation
None				

f Total number of other employees paid over \$100,000 **0**

51 Complete this table for the organization's five highest compensated independent contractors who each received more than \$100,000 of compensation from the organization. If there is none, enter "None."

(a) Name and business address of each independent contractor	(b) Type of service	(c) Compensation
None		

d Total number of other independent contractors each receiving over \$100,000 **0**

52 Did the organization complete Schedule A? **Note:** All section 501(c)(3) organizations must attach a completed Schedule A ☒ Yes ☐ No

Under penalties of perjury, I declare that I have examined this return, including accompanying schedules and statements, and to the best of my knowledge and belief, it is true, correct, and complete. Declaration of preparer (other than officer) is based on all information of which preparer has any knowledge.

Sign Here Signature of officer David Reingold Date 5-16-2020
Type or print name and title David Reingold Treasurer

Paid Preparer Use Only Print/Type preparer's name Preparer's signature Date Check ☐ if self-employed PTIN
Firm's name Firm's EIN
Firm's address Phone no.

May the IRS discuss this return with the preparer shown above? See instructions ☐ Yes ☐ No

SCHEDULE A
(Form 990 or 990-EZ)

Department of the Treasury
Internal Revenue Service

Public Charity Status and Public Support

Complete if the organization is a section 501(c)(3) organization or a section 4947(a)(1) nonexempt charitable trust.

▶ Attach to Form 990 or Form 990-EZ.

▶ Go to www.irs.gov/Form990 for instructions and the latest information.

OMB No. 1545-0047

2019

**Open to Public
Inspection**

Name of the organization

Employer identification number

American Chemical Society, Portland Section

93-6034605

Part I Reason for Public Charity Status (All organizations must complete this part.) See instructions.

The organization is not a private foundation because it is: (For lines 1 through 12, check only one box.)

- 1 ☐ A church, convention of churches, or association of churches described in **section 170(b)(1)(A)(i)**.
- 2 ☐ A school described in **section 170(b)(1)(A)(ii)**. (Attach Schedule E (Form 990 or 990-EZ).)
- 3 ☐ A hospital or a cooperative hospital service organization described in **section 170(b)(1)(A)(iii)**.
- 4 ☐ A medical research organization operated in conjunction with a hospital described in **section 170(b)(1)(A)(iii)**. Enter the hospital's name, city, and state: 09
- 5 ☐ An organization operated for the benefit of a college or university owned or operated by a governmental unit described in **section 170(b)(1)(A)(iv)**. (Complete Part II.)
- 6 ☐ A federal, state, or local government or governmental unit described in **section 170(b)(1)(A)(v)**.
- 7 ☐ An organization that normally receives a substantial part of its support from a governmental unit or from the general public described in **section 170(b)(1)(A)(vi)**. (Complete Part II.)
- 8 ☐ A community trust described in **section 170(b)(1)(A)(vi)**. (Complete Part II.)
- 9 ☐ An agricultural research organization described in **section 170(b)(1)(A)(ix)** operated in conjunction with a land-grant college or university or a non-land-grant college of agriculture (see instructions). Enter the name, city, and state of the college or university:
- 10 ☒ An organization that normally receives: (1) more than 33 1/3% of its support from contributions, membership fees, and gross receipts from activities related to its exempt functions—subject to certain exceptions, and (2) no more than 33 1/3% of its support from gross investment income and unrelated business taxable income (less section 511 tax) from businesses acquired by the organization after June 30, 1975. See **section 509(a)(2)**. (Complete Part III.)
- 11 ☐ An organization organized and operated exclusively to test for public safety. See **section 509(a)(4)**.
- 12 ☐ An organization organized and operated exclusively for the benefit of, to perform the functions of, or to carry out the purposes of one or more publicly supported organizations described in **section 509(a)(1)** or **section 509(a)(2)**. See **section 509(a)(3)**. Check the box in lines 12a through 12d that describes the type of supporting organization and complete lines 12e, 12f, and 12g.
- a ☐ **Type I.** A supporting organization operated, supervised, or controlled by its supported organization(s), typically by giving the supported organization(s) the power to regularly appoint or elect a majority of the directors or trustees of the supporting organization. **You must complete Part IV, Sections A and B.**
- b ☐ **Type II.** A supporting organization supervised or controlled in connection with its supported organization(s), by having control or management of the supporting organization vested in the same persons that control or manage the supported organization(s). **You must complete Part IV, Sections A and C.**
- c ☐ **Type III functionally integrated.** A supporting organization operated in connection with, and functionally integrated with, its supported organization(s) (see instructions). **You must complete Part IV, Sections A, D, and E.**
- d ☐ **Type III non-functionally integrated.** A supporting organization operated in connection with its supported organization(s) that is not functionally integrated. The organization generally must satisfy a distribution requirement and an attentiveness requirement (see instructions). **You must complete Part IV, Sections A and D, and Part V.**
- e ☐ Check this box if the organization received a written determination from the IRS that it is a Type I, Type II, Type III functionally integrated, or Type III non-functionally integrated supporting organization.
- f Enter the number of supported organizations
- g Provide the following information about the supported organization(s).

(i) Name of supported organization	(ii) EIN	(iii) Type of organization (described on lines 1–10 above (see instructions))	(iv) Is the organization listed in your governing document?		(v) Amount of monetary support (see instructions)	(vi) Amount of other support (see instructions)
			Yes	No		
(A)						
(B)						
(C)						
(D)						
(E)						
Total						

Part II Support Schedule for Organizations Described in Sections 170(b)(1)(A)(iv) and 170(b)(1)(A)(vi)

(Complete only if you checked the box on line 5, 7, or 8 of Part I or if the organization failed to qualify under Part III. If the organization fails to qualify under the tests listed below, please complete Part III.)

Section A. Public Support

Calendar year (or fiscal year beginning in) ▶	(a) 2015	(b) 2016	(c) 2017	(d) 2018	(e) 2019	(f) Total
1 Gifts, grants, contributions, and membership fees received. (Do not include any "unusual grants.")	27542	32860	46500	51985	71740	230627
2 Tax revenues levied for the organization's benefit and either paid to or expended on its behalf	0	0	0	0	0	0
3 The value of services or facilities furnished by a governmental unit to the organization without charge	0	0	0	0	0	0
4 Total. Add lines 1 through 3	27542	32860	46500	51985	71740	230627
5 The portion of total contributions by each person (other than a governmental unit or publicly supported organization) included on line 1 that exceeds 2% of the amount shown on line 11, column (f)						0
6 Public support. Subtract line 5 from line 4						230627

Section B. Total Support

Calendar year (or fiscal year beginning in) ▶	(a) 2015	(b) 2016	(c) 2017	(d) 2018	(e) 2019	(f) Total
7 Amounts from line 4	27542	32860	46500	51985	71740	230627
8 Gross income from interest, dividends, payments received on securities loans, rents, royalties, and income from similar sources	9568	10020	10259	10960	11547	52354
9 Net income from unrelated business activities, whether or not the business is regularly carried on	0	0	0	0	0	0
10 Other income. Do not include gain or loss from the sale of capital assets (Explain in Part VI.)	3639	4138	7582	8467	79432	103258
11 Total support. Add lines 7 through 10						386239
12 Gross receipts from related activities, etc. (see instructions)					12	103258
13 First five years. If the Form 990 is for the organization's first, second, third, fourth, or fifth tax year as a section 501(c)(3) organization, check this box and stop here						<input type="checkbox"/>

Section C. Computation of Public Support Percentage

14 Public support percentage for 2019 (line 6, column (f) divided by line 11, column (f))	14	60 %
15 Public support percentage from 2018 Schedule A, Part II, line 14	15	83 %
16a 33⅓% support test—2019. If the organization did not check the box on line 13, and line 14 is 33⅓% or more, check this box and stop here. The organization qualifies as a publicly supported organization		<input checked="" type="checkbox"/>
b 33⅓% support test—2018. If the organization did not check a box on line 13 or 16a, and line 15 is 33⅓% or more, check this box and stop here. The organization qualifies as a publicly supported organization		<input type="checkbox"/>
17a 10%-facts-and-circumstances test—2019. If the organization did not check a box on line 13, 16a, or 16b, and line 14 is 10% or more, and if the organization meets the "facts-and-circumstances" test, check this box and stop here. Explain in Part VI how the organization meets the "facts-and-circumstances" test. The organization qualifies as a publicly supported organization		<input type="checkbox"/>
b 10%-facts-and-circumstances test—2018. If the organization did not check a box on line 13, 16a, 16b, or 17a, and line 15 is 10% or more, and if the organization meets the "facts-and-circumstances" test, check this box and stop here. Explain in Part VI how the organization meets the "facts-and-circumstances" test. The organization qualifies as a publicly supported organization		<input type="checkbox"/>
18 Private foundation. If the organization did not check a box on line 13, 16a, 16b, 17a, or 17b, check this box and see instructions		<input type="checkbox"/>

Part III Support Schedule for Organizations Described in Section 509(a)(2)

(Complete only if you checked the box on line 10 of Part I or if the organization failed to qualify under Part II.
If the organization fails to qualify under the tests listed below, please complete Part II.)

Section A. Public Support

Calendar year (or fiscal year beginning in) ►	(a) 2015	(b) 2016	(c) 2017	(d) 2018	(e) 2019	(f) Total
1 Gifts, grants, contributions, and membership fees received (Do not include any "unusual grants.")	27542	32860	46500	51985	71740	230627
2 Gross receipts from admissions, merchandise sold or services performed, or facilities furnished in any activity that is related to the organization's tax-exempt purpose	3639	4138	7582	8467	79432	103258
3 Gross receipts from activities that are not an unrelated trade or business under section 513	0	0	0	0	0	0
4 Tax revenues levied for the organization's benefit and either paid to or expended on its behalf	0	0	0	0	0	0
5 The value of services or facilities furnished by a governmental unit to the organization without charge	0	0	0	0	0	0
6 Total. Add lines 1 through 5	31181	36998	54082	60452	151172	333885
7a Amounts included on lines 1, 2, and 3 received from disqualified persons	0	0	0	0	0	0
b Amounts included on lines 2 and 3 received from other than disqualified persons that exceed the greater of \$5,000 or 1% of the amount on line 13 for the year	0	0	0	0	0	0
c Add lines 7a and 7b	0	0	0	0	0	0
8 Public support. (Subtract line 7c from line 6.)						333885

Section B. Total Support

Calendar year (or fiscal year beginning in) ►	(a) 2015	(b) 2016	(c) 2017	(d) 2018	(e) 2019	(f) Total
9 Amounts from line 6	31181	36998	54082	60452	151172	333885
10a Gross income from interest, dividends, payments received on securities loans, rents, royalties, and income from similar sources	9568	10020	10259	10960	11547	52354
b Unrelated business taxable income (less section 511 taxes) from businesses acquired after June 30, 1975	0	0	0	0	0	0
c Add lines 10a and 10b	9568	10020	10259	10960	11547	52354
11 Net income from unrelated business activities not included in line 10b, whether or not the business is regularly carried on	0	0	0	0	0	0
12 Other income. Do not include gain or loss from the sale of capital assets (Explain in Part VI.)	0	0	0	0	0	0
13 Total support. (Add lines 9, 10c, 11, and 12.)	40749	47018	64341	71412	162719	386239
14 First five years. If the Form 990 is for the organization's first, second, third, fourth, or fifth tax year as a section 501(c)(3) organization, check this box and stop here ► <input type="checkbox"/>						

Section C. Computation of Public Support Percentage

15 Public support percentage for 2019 (line 8, column (f), divided by line 13, column (f))	15	86 %
16 Public support percentage from 2018 Schedule A, Part III, line 15	16	83 %

Section D. Computation of Investment Income Percentage

17 Investment income percentage for 2019 (line 10c, column (f), divided by line 13, column (f))	17	14 %
18 Investment income percentage from 2018 Schedule A, Part III, line 17	18	17 %

- 19a 33 1/3% support tests—2019.** If the organization did not check the box on line 14, and line 15 is more than 33 1/3%, and line 17 is not more than 33 1/3%, check this box and **stop here**. The organization qualifies as a publicly supported organization ► ☒
- b 33 1/3% support tests—2018.** If the organization did not check a box on line 14 or line 19a, and line 16 is more than 33 1/3%, and line 18 is not more than 33 1/3%, check this box and **stop here**. The organization qualifies as a publicly supported organization ► ☐
- 20 Private foundation.** If the organization did not check a box on line 14, 19a, or 19b, check this box and see instructions ► ☐

SCHEDULE O
(Form 990 or 990-EZ)

Department of the Treasury
Internal Revenue Service

Supplemental Information to Form 990 or 990-EZ

Complete to provide information for responses to specific questions on
Form 990 or 990-EZ or to provide any additional information.

► Attach to Form 990 or 990-EZ.

► Go to www.irs.gov/Form990 for the latest information.

OMB No. 1545-0047

2019

**Open to Public
Inspection**

Name of the organization

American Chemical Society, Portland Section

Employer identification number

93-6034605

Line 16, other expenses:

Oregon Science Startup Forum 8891

Young Chemists Committee 1178

Supporting student registrations at NORM and OSSF 3003

Leadership Institute 425

Councilor Travel 2546

Website design and maintenance 2875

Equipment for webcasting 461

Fees 499

Printing 508

Misc 650

Total 21036

Line 20: Gain represents unrealized gains in book value of mutual funds held in investments.

Line 31: Same as Line 16 above.