

29493044137241
1910

Form 990

OMB No 1545-0047

Return of Organization Exempt From Income Tax

2018

Under section 501(c), 527, or 4947(a)(1) of the Internal Revenue Code (except private foundations)

Open to Public Inspection

Department of the Treasury
Internal Revenue Service

Do not enter social security numbers on this form as it may be made public.
Go to www.irs.gov/Form990 for instructions and the latest information.

A For the 2018 calendar year, or tax year beginning 11/01, 2018, and ending 10/31, 2019

B Check if applicable:
 Address change
 Name change
 Initial return
 Final return/terminated
 Amended return
 Application pending

C THE SHERIFF'S POSSE, INC
PO BOX 1597
SUNLAND PARK, NM 88063

D Employer identification number: 74-0896297

E Telephone number:

F Name and address of principal officer: Same As C Above

G Gross receipts \$: 290,966.

H(a) Is this a group return for subordinates? Yes No

H(b) Are all subordinates included? Yes No

I Tax-exempt status: 501(c)(3) 501(c) (7) (insert no.) 4947(a)(1) or 527

J Website: N/A

K Form of organization: Corporation Trust Association Other

L Year of formation: 1936

M State of legal domicile: NM

Part I Summary

1 Briefly describe the organization's mission or most significant activities: PLEASURE/RECREATION - RIDING HORSES	
2 Check this box <input type="checkbox"/> if the organization discontinued its operations or disposed of more than 25% of its net assets	
3 Number of voting members of the governing body (Part VI, line 1a)	6
4 Number of independent voting members of the governing body (Part VI, line 1b)	0
5 Total number of individuals employed in calendar year 2018 (Part V, line 2a)	2
6 Total number of volunteers (estimate if necessary)	0
7a Total unrelated business revenue from Part VIII, column (C), line 12	99.
7b Net unrelated business taxable income from Form 990-T, line 38	0.
8 Contributions and grants (Part VIII, line 1h)	Prior Year: Current Year: 350.
9 Program service revenue (Part VIII, line 2g)	88,675. 82,596.
10 Investment income (Part VIII, column (A), lines 3, 4, and 7d)	285. 99.
11 Other revenue (Part VIII, column (A), lines 5, 6d, 8c, 9c, 10c, and 11e)	97,929. 96,402.
12 Total revenue - add lines 8 through 11 (must equal Part VIII, column (A), line 12)	186,889. 179,447.
13 Grants and similar amounts paid (Part IX, column (A), lines 1-3)	
14 Benefits paid to or for members (Part IX, column (A), line 4)	
15 Salaries, other compensation, employee benefits (Part IX, column (A), lines 5-10)	29,989. 27,767.
16a Professional fundraising fees (Part IX, column (A), line 11e)	
b Total fundraising expenses (Part IX, column (D), line 25)	
17 Other expenses (Part IX, column (A), lines 11a-11d, 11e, 24e)	110,661. 133,089.
18 Total expenses Add lines 13-17 (must equal Part IX, column (A), line 25)	140,650. 160,856.
19 Revenue less expenses Subtract line 18 from line 12	46,239. 18,591.
20 Total assets (Part X, line 16)	Beginning of Current Year: End of Year: 404,128. 423,827.
21 Total liabilities (Part X, line 26)	12,312. 13,320.
22 Net assets or fund balances Subtract line 21 from line 20	391,816. 410,507.

Part III Signature Block

Under penalties of perjury, I declare that I have examined this return, including accompanying schedules and statements, and to the best of my knowledge and belief, it is true, correct, and complete. Declaration of preparer (other than officer) is based on all information of which preparer has any knowledge.

Sign Here
 Signature of officer: *Patrick R Gordon* Date: 8-16-2020
 Type or print name and title: PATRICK R GORDON OFFICER TREASURER

Paid Preparer Use Only
 Print/Type preparer's name: James L. Ellis Preparer's signature: *James L. Ellis CPA* Date: 8/5/2020
 Firm's name: James L. Ellis, CPA, P.C. Check if self-employed PTIN: P00594648
 Firm's address: 2009 Montana Avenue El Paso, TX 79903 Firm's EIN: 74-2779286
 Phone no: 915-593-7070

May the IRS discuss this return with the preparer shown above? (see instructions) Yes No

SCANNED JAN 06 2022

25

Part III Statement of Program Service Accomplishments

Check if Schedule O contains a response or note to any line in this Part III

1 Briefly describe the organization's mission

PLEASURE/RECREATION - RIDING HORSES

2 Did the organization undertake any significant program services during the year which were not listed on the prior Form 990 or 990-EZ?

Yes No

If "Yes," describe these new services on Schedule O

3 Did the organization cease conducting, or make significant changes in how it conducts, any program services?

Yes No

If "Yes," describe these changes on Schedule O

4 Describe the organization's program service accomplishments for each of its three largest program services, as measured by expenses Section 501(c)(3) and 501(c)(4) organizations are required to report the amount of grants and allocations to others, the total expenses, and revenue, if any, for each program service reported

4a (Code) (Expenses \$ including grants of \$) (Revenue \$)

HORSE STABLES - MEMBERS UTILIZE FACILITIES FOR BOARDING THEIR HORSES

4b (Code) (Expenses \$ including grants of \$) (Revenue \$)

CLUB AND BAR - BREAKFAST IS SERVED ONCE A WEEK TO PARTICIPATING MEMBERS AND CLUB IS OPEN FOR CLUB MEMBERS ALL YEAR.

4c (Code) (Expenses \$ including grants of \$) (Revenue \$)

MAJOR SOCIAL FUNCTIONS FOR MEMBERS - CHRISTMAS PARTY, OYSTER BUST, SPRING RIDE, AND OTHER MISCELLANEOUS ACTIVITIES.

4d Other program services (Describe in Schedule O)

(Expenses \$ including grants of \$) (Revenue \$)

4e Total program service expenses 0.

Part IV Checklist of Required Schedules

	Yes	No
1 Is the organization described in section 501(c)(3) or 4947(a)(1) (other than a private foundation)? <i>If 'Yes,' complete Schedule A</i>	<input type="checkbox"/>	X
2 Is the organization required to complete <i>Schedule B, Schedule of Contributors</i> (see instructions)?	<input type="checkbox"/>	X
3 Did the organization engage in direct or indirect political campaign activities on behalf of or in opposition to candidates for public office? <i>If 'Yes,' complete Schedule C, Part I</i>	<input type="checkbox"/>	X
4 Section 501(c)(3) organizations. Did the organization engage in lobbying activities, or have a section 501(h) election in effect during the tax year? <i>If 'Yes,' complete Schedule C, Part II</i>	<input type="checkbox"/>	<input type="checkbox"/>
5 Is the organization a section 501(c)(4), 501(c)(5), or 501(c)(6) organization that receives membership dues, assessments, or similar amounts as defined in Revenue Procedure 98-19? <i>If 'Yes,' complete Schedule C, Part III</i>	<input type="checkbox"/>	X
6 Did the organization maintain any donor advised funds or any similar funds or accounts for which donors have the right to provide advice on the distribution or investment of amounts in such funds or accounts? <i>If 'Yes,' complete Schedule D, Part I</i>	<input type="checkbox"/>	X
7 Did the organization receive or hold a conservation easement, including easements to preserve open space, the environment, historic land areas, or historic structures? <i>If 'Yes,' complete Schedule D, Part II</i>	<input type="checkbox"/>	X
8 Did the organization maintain collections of works of art, historical treasures, or other similar assets? <i>If 'Yes,' complete Schedule D, Part III</i>	<input type="checkbox"/>	X
9 Did the organization report an amount in Part X, line 21, for escrow or custodial account liability, serve as a custodian for amounts not listed in Part X, or provide credit counseling, debt management, credit repair, or debt negotiation services? <i>If 'Yes,' complete Schedule D, Part IV</i>	<input type="checkbox"/>	X
10 Did the organization, directly or through a related organization, hold assets in temporarily restricted endowments, permanent endowments, or quasi-endowments? <i>If 'Yes,' complete Schedule D, Part V</i>	<input type="checkbox"/>	X
11 If the organization's answer to any of the following questions is 'Yes', then complete Schedule D, Parts VI, VII, VIII, IX, or X as applicable	<input type="checkbox"/>	<input type="checkbox"/>
a Did the organization report an amount for land, buildings, and equipment in Part X, line 10? <i>If 'Yes,' complete Schedule D, Part VI</i>	X	<input type="checkbox"/>
b Did the organization report an amount for investments – other securities in Part X, line 12 that is 5% or more of its total assets reported in Part X, line 16? <i>If 'Yes,' complete Schedule D, Part VII</i>	<input type="checkbox"/>	X
c Did the organization report an amount for investments – program related in Part X, line 13 that is 5% or more of its total assets reported in Part X, line 16? <i>If 'Yes,' complete Schedule D, Part VIII</i>	<input type="checkbox"/>	X
d Did the organization report an amount for other assets in Part X, line 15 that is 5% or more of its total assets reported in Part X, line 16? <i>If 'Yes,' complete Schedule D, Part IX</i>	<input type="checkbox"/>	X
e Did the organization report an amount for other liabilities in Part X, line 25? <i>If 'Yes,' complete Schedule D, Part X</i>	X	<input type="checkbox"/>
f Did the organization's separate or consolidated financial statements for the tax year include a footnote that addresses the organization's liability for uncertain tax positions under FIN 48 (ASC 740)? <i>If 'Yes,' complete Schedule D, Part X</i>	<input type="checkbox"/>	X
12a Did the organization obtain separate, independent audited financial statements for the tax year? <i>If 'Yes,' complete Schedule D, Parts XI and XII</i>	<input type="checkbox"/>	X
b Was the organization included in consolidated, independent audited financial statements for the tax year? <i>If 'Yes,' and if the organization answered 'No' to line 12a, then completing Schedule D, Parts XI and XII is optional</i>	<input type="checkbox"/>	X
13 Is the organization a school described in section 170(b)(1)(A)(ii)? <i>If 'Yes,' complete Schedule E</i>	<input type="checkbox"/>	X
14a Did the organization maintain an office, employees, or agents outside of the United States?	<input type="checkbox"/>	X
b Did the organization have aggregate revenues or expenses of more than \$10,000 from grantmaking, fundraising, business, investment, and program service activities outside the United States, or aggregate foreign investments valued at \$100,000 or more? <i>If 'Yes,' complete Schedule F, Parts I and IV</i>	<input type="checkbox"/>	X
15 Did the organization report on Part IX, column (A), line 3, more than \$5,000 of grants or other assistance to or for any foreign organization? <i>If 'Yes,' complete Schedule F, Parts II and IV</i>	<input type="checkbox"/>	X
16 Did the organization report on Part IX, column (A), line 3, more than \$5,000 of aggregate grants or other assistance to or for foreign individuals? <i>If 'Yes,' complete Schedule F, Parts III and IV</i>	<input type="checkbox"/>	X
17 Did the organization report a total of more than \$15,000 of expenses for professional fundraising services on Part IX, column (A), lines 6 and 11e? <i>If 'Yes,' complete Schedule G, Part I (see instructions)</i>	<input type="checkbox"/>	X
18 Did the organization report more than \$15,000 total of fundraising event gross income and contributions on Part VIII, lines 1c and 8a? <i>If 'Yes,' complete Schedule G, Part II</i>	X	<input type="checkbox"/>
19 Did the organization report more than \$15,000 of gross income from gaming activities on Part VIII, line 9a? <i>If 'Yes,' complete Schedule G, Part III</i>	<input type="checkbox"/>	X
20a Did the organization operate one or more hospital facilities? <i>If 'Yes,' complete Schedule H</i>	<input type="checkbox"/>	X
b If 'Yes' to line 20a, did the organization attach a copy of its audited financial statements to this return?	<input type="checkbox"/>	<input type="checkbox"/>
21 Did the organization report more than \$5,000 of grants or other assistance to any domestic organization or domestic government on Part IX, column (A), line 1? <i>If 'Yes,' complete Schedule I, Parts I and II</i>	<input type="checkbox"/>	X

Part IV Checklist of Required Schedules (continued)

	Yes	No
22 Did the organization report more than \$5,000 of grants or other assistance to or for domestic individuals on Part IX, column (A), line 2? If 'Yes,' complete Schedule I, Parts I and III		X
23 Did the organization answer 'Yes' to Part VII, Section A, line 3, 4, or 5 about compensation of the organization's current and former officers, directors, trustees, key employees, and highest compensated employees? If 'Yes,' complete Schedule J		X
24a Did the organization have a tax-exempt bond issue with an outstanding principal amount of more than \$100,000 as of the last day of the year, that was issued after December 31, 2002? If 'Yes,' answer lines 24b through 24d and complete Schedule K. If 'No,' go to line 25a		X
b Did the organization invest any proceeds of tax-exempt bonds beyond a temporary period exception?		
c Did the organization maintain an escrow account other than a refunding escrow at any time during the year to defease any tax-exempt bonds?		
d Did the organization act as an 'on behalf of' issuer for bonds outstanding at any time during the year?		
25a Section 501(c)(3), 501(c)(4), and 501(c)(29) organizations. Did the organization engage in an excess benefit transaction with a disqualified person during the year? If 'Yes,' complete Schedule L, Part I		
b Is the organization aware that it engaged in an excess benefit transaction with a disqualified person in a prior year, and that the transaction has not been reported on any of the organization's prior Forms 990 or 990-EZ? If 'Yes,' complete Schedule L, Part I		
26 Did the organization report any amount on Part X, line 5, 6, or 22 for receivables from or payables to any current or former officers, directors, trustees, key employees, highest compensated employees, or disqualified persons? If 'Yes,' complete Schedule L, Part II		X
27 Did the organization provide a grant or other assistance to an officer, director, trustee, key employee, substantial contributor or employee thereof, a grant selection committee member, or to a 35% controlled entity or family member of any of these persons? If 'Yes,' complete Schedule L, Part III		X
28 Was the organization a party to a business transaction with one of the following parties (see Schedule L, Part IV instructions for applicable filing thresholds, conditions, and exceptions)		
a A current or former officer, director, trustee, or key employee? If 'Yes,' complete Schedule L, Part IV		X
b A family member of a current or former officer, director, trustee, or key employee? If 'Yes,' complete Schedule L, Part IV		X
c An entity of which a current or former officer, director, trustee, or key employee (or a family member thereof) was an officer, director, trustee, or direct or indirect owner? If 'Yes,' complete Schedule L, Part IV		X
29 Did the organization receive more than \$25,000 in non-cash contributions? If 'Yes,' complete Schedule M		X
30 Did the organization receive contributions of art, historical treasures, or other similar assets, or qualified conservation contributions? If 'Yes,' complete Schedule M		X
31 Did the organization liquidate, terminate, or dissolve and cease operations? If 'Yes,' complete Schedule N, Part I		X
32 Did the organization sell, exchange, dispose of, or transfer more than 25% of its net assets? If 'Yes,' complete Schedule N, Part II		X
33 Did the organization own 100% of an entity disregarded as separate from the organization under Regulations sections 301.7701-2 and 301.7701-3? If 'Yes,' complete Schedule R, Part I		X
34 Was the organization related to any tax-exempt or taxable entity? If 'Yes,' complete Schedule R, Part II, III, or IV, and Part V, line 1		X
35a Did the organization have a controlled entity within the meaning of section 512(b)(13)?		X
b If 'Yes' to line 35a, did the organization receive any payment from or engage in any transaction with a controlled entity within the meaning of section 512(b)(13)? If 'Yes,' complete Schedule R, Part V, line 2		
36 Section 501(c)(3) organizations. Did the organization make any transfers to an exempt non-charitable related organization? If 'Yes,' complete Schedule R, Part V, line 2		
37 Did the organization conduct more than 5% of its activities through an entity that is not a related organization and that is treated as a partnership for federal income tax purposes? If 'Yes,' complete Schedule R, Part VI		X
38 Did the organization complete Schedule O and provide explanations in Schedule O for Part VI, lines 11b and 19? Note. All Form 990 filers are required to complete Schedule O	X	

Part V Statements Regarding Other IRS Filings and Tax Compliance

Check if Schedule O contains a response or note to any line in this Part V

	Yes	No
1 a Enter the number reported in Box 3 of Form 1096. Enter -0- if not applicable		
b Enter the number of Forms W-2G included in line 1a. Enter -0- if not applicable		
c Did the organization comply with backup withholding rules for reportable payments to vendors and reportable gaming (gambling) winnings to prize winners?	X	

Part V Statements Regarding Other IRS Filings and Tax Compliance (continued)

		Yes	No
2 a	Enter the number of employees reported on Form W-3, Transmittal of Wage and Tax Statements, filed for the calendar year ending with or within the year covered by this return		
2 b	If at least one is reported on line 2a, did the organization file all required federal employment tax returns? Note. If the sum of lines 1a and 2a is greater than 250, you may be required to e-file (see instructions)	X	
3 a	Did the organization have unrelated business gross income of \$1,000 or more during the year?		X
3 b	If 'Yes,' has it filed a Form 990-T for this year? If 'No' to line 3b, provide an explanation in Schedule O		
4 a	At any time during the calendar year, did the organization have an interest in, or a signature or other authority over, a financial account in a foreign country (such as a bank account, securities account, or other financial account)?		X
4 b	If 'Yes,' enter the name of the foreign country See instructions for filing requirements for FinCEN Form 114, Report of Foreign Bank and Financial Accounts (FBAR)		
5 a	Was the organization a party to a prohibited tax shelter transaction at any time during the tax year?		X
5 b	Did any taxable party notify the organization that it was or is a party to a prohibited tax shelter transaction?		X
5 c	If 'Yes,' to line 5a or 5b, did the organization file Form 8886-T?		
6 a	Does the organization have annual gross receipts that are normally greater than \$100,000, and did the organization solicit any contributions that were not tax deductible as charitable contributions?		X
6 b	If 'Yes,' did the organization include with every solicitation an express statement that such contributions or gifts were not tax deductible?		
7	Organizations that may receive deductible contributions under section 170(c).		
7 a	Did the organization receive a payment in excess of \$75 made partly as a contribution and partly for goods and services provided to the payor?		
7 b	If 'Yes,' did the organization notify the donor of the value of the goods or services provided?		
7 c	Did the organization sell, exchange, or otherwise dispose of tangible personal property for which it was required to file Form 8282?		
7 d	If 'Yes,' indicate the number of Forms 8282 filed during the year		
7 e	Did the organization receive any funds, directly or indirectly, to pay premiums on a personal benefit contract?		
7 f	Did the organization, during the year, pay premiums, directly or indirectly, on a personal benefit contract?		
7 g	If the organization received a contribution of qualified intellectual property, did the organization file Form 8899 as required?		
7 h	If the organization received a contribution of cars, boats, airplanes, or other vehicles, did the organization file a Form 1098-C?		
8	Sponsoring organizations maintaining donor advised funds. Did a donor advised fund maintained by the sponsoring organization have excess business holdings at any time during the year?		
9	Sponsoring organizations maintaining donor advised funds.		
9 a	Did the sponsoring organization make any taxable distributions under section 4966?		
9 b	Did the sponsoring organization make a distribution to a donor, donor advisor, or related person?		
10	Section 501(c)(7) organizations. Enter		
10 a	Initiation fees and capital contributions included on Part VIII, line 12	0.	
10 b	Gross receipts, included on Form 990, Part VIII, line 12, for public use of club facilities	0.	
11	Section 501(c)(12) organizations. Enter		
11 a	Gross income from members or shareholders		
11 b	Gross income from other sources (Do not net amounts due or paid to other sources against amounts due or received from them)		
12 a	Section 4947(a)(1) non-exempt charitable trusts. Is the organization filing Form 990 in lieu of Form 1041?		
12 b	If 'Yes,' enter the amount of tax-exempt interest received or accrued during the year		
13	Section 501(c)(29) qualified nonprofit health insurance issuers.		
13 a	Is the organization licensed to issue qualified health plans in more than one state? Note. See the instructions for additional information the organization must report on Schedule O		
13 b	Enter the amount of reserves the organization is required to maintain by the states in which the organization is licensed to issue qualified health plans		
13 c	Enter the amount of reserves on hand		
14 a	Did the organization receive any payments for indoor tanning services during the tax year?		X
14 b	If 'Yes,' has it filed a Form 720 to report these payments? If 'No,' provide an explanation in Schedule O		
15	Is the organization subject to the section 4960 tax on payment(s) of more than \$1,000,000 in remuneration or excess parachute payment(s) during the year? If 'Yes,' see instructions and file Form 4720, Schedule N		X
16	Is the organization an educational institution subject to the section 4968 excise tax on net investment income? If 'Yes,' complete Form 4720, Schedule O		X

Part VII Governance, Management, and Disclosure For each 'Yes' response to lines 2 through 7b below, and for a 'No' response to line 8a, 8b, or 10b below, describe the circumstances, processes, or changes in Schedule O. See instructions.

Check if Schedule O contains a response or note to any line in this Part VI

Section A. Governing Body and Management

		Yes	No
1 a	Enter the number of voting members of the governing body at the end of the tax year. If there are material differences in voting rights among members of the governing body, or if the governing body delegated broad authority to an executive committee or similar committee, explain in Schedule O.		
1 b	Enter the number of voting members included in line 1a, above, who are independent.		
2	Did any officer, director, trustee, or key employee have a family relationship or a business relationship with any other officer, director, trustee, or key employee?		X
3	Did the organization delegate control over management duties customarily performed by or under the direct supervision of officers, directors, or trustees, or key employees to a management company or other person?		X
4	Did the organization make any significant changes to its governing documents since the prior Form 990 was filed?		X
5	Did the organization become aware during the year of a significant diversion of the organization's assets?		X
6	Did the organization have members or stockholders?		X
7 a	Did the organization have members, stockholders, or other persons who had the power to elect or appoint one or more members of the governing body?		X
7 b	Are any governance decisions of the organization reserved to (or subject to approval by) members, stockholders, or persons other than the governing body?		X
8	Did the organization contemporaneously document the meetings held or written actions undertaken during the year by the following:		
8 a	The governing body?	X	
8 b	Each committee with authority to act on behalf of the governing body?		X
9	Is there any officer, director, trustee, or key employee listed in Part VII, Section A, who cannot be reached at the organization's mailing address? If 'Yes,' provide the names and addresses in Schedule O.		X

Section B. Policies (This Section B requests information about policies not required by the Internal Revenue Code.)

		Yes	No
10 a	Did the organization have local chapters, branches, or affiliates?		X
10 b	If 'Yes,' did the organization have written policies and procedures governing the activities of such chapters, affiliates, and branches to ensure their operations are consistent with the organization's exempt purposes?		
11 a	Has the organization provided a complete copy of this Form 990 to all members of its governing body before filing the form?	X	
11 b	Describe in Schedule O the process, if any, used by the organization to review this Form 990. See Schedule O.		
12 a	Did the organization have a written conflict of interest policy? If 'No,' go to line 13.		X
12 b	Were officers, directors, or trustees, and key employees required to disclose annually interests that could give rise to conflicts?		
12 c	Did the organization regularly and consistently monitor and enforce compliance with the policy? If 'Yes,' describe in Schedule O how this was done.		
13	Did the organization have a written whistleblower policy?		X
14	Did the organization have a written document retention and destruction policy?		X
15	Did the process for determining compensation of the following persons include a review and approval by independent persons, comparability data, and contemporaneous substantiation of the deliberation and decision?		
15 a	The organization's CEO, Executive Director, or top management official		X
15 b	Other officers or key employees of the organization. If 'Yes' to line 15a or 15b, describe the process in Schedule O (see instructions).		X
16 a	Did the organization invest in, contribute assets to, or participate in a joint venture or similar arrangement with a taxable entity during the year?		X
16 b	If 'Yes,' did the organization follow a written policy or procedure requiring the organization to evaluate its participation in joint venture arrangements under applicable federal tax law, and take steps to safeguard the organization's exempt status with respect to such arrangements?		

Section C. Disclosure

- 17** List the states with which a copy of this Form 990 is required to be filed: None
- 18** Section 6104 requires an organization to make its Forms 1023 (1024 or 1024-A if applicable), 990, and 990-T (Section 501(c)(3)s only) available for public inspection. Indicate how you made these available. Check all that apply.
 Own website Another's website Upon request Other (explain in Schedule O)
- 19** Describe in Schedule O whether (and if so, how) the organization made its governing documents, conflict of interest policy, and financial statements available to the public during the tax year. See Schedule O
- 20** State the name, address, and telephone number of the person who possesses the organization's books and records: PAT GORDON 4800 MCNUTT ROAD SUNLAND PARK NM 88063 505-589-7526

Part VII Compensation of Officers, Directors, Trustees, Key Employees, Highest Compensated Employees, and Independent Contractors

Check if Schedule O contains a response or note to any line in this Part VII

Section A. Officers, Directors, Trustees, Key Employees, and Highest Compensated Employees

1 a Complete this table for all persons required to be listed Report compensation for the calendar year ending with or within the organization's tax year

- List all of the organization's **current** officers, directors, trustees (whether individuals or organizations), regardless of amount of compensation Enter -0- in columns (D), (E), and (F) if no compensation was paid
- List all of the organization's **current** key employees, if any See instructions for definition of 'key employee'
- List the organization's five **current** highest compensated employees (other than an officer, director, trustee, or key employee) who received reportable compensation (Box 5 of Form W-2 and/or Box 7 of Form 1099-MISC) of more than \$100,000 from the organization and any related organizations.
- List all of the organization's **former** officers, key employees, and highest compensated employees who received more than \$100,000 of reportable compensation from the organization and any related organizations.
- List all of the organization's **former directors or trustees** that received, in the capacity as a former director or trustee of the organization, more than \$10,000 of reportable compensation from the organization and any related organizations.

List persons in the following order individual trustees or directors, institutional trustees, officers, key employees, highest compensated employees, and former such persons

Check this box if neither the organization nor any related organization compensated any current officer, director, or trustee

(A) Name and Title	(B) Average hours per week (list any hours for related organizations below dotted line)	(C) Position (do not check more than one box, unless person is both an officer and a director/trustee)						(D) Reportable compensation from the organization (W-2/1099-MISC)	(E) Reportable compensation from related organizations (W-2/1099-MISC)	(F) Estimated amount of other compensation from the organization and related organizations
		Individual trustee or director	Institutional trustee	Officer	Key employee	Highest compensated employee	Former			
(1) BRYAN DILLER ----- President	0 ----- 0	X					0.	0.	0.	
(2) DARRYL S VEREEN ----- Vice President	0 ----- 0	X					0.	0.	0.	
(3) MARK E NUNNERY ----- Vice President	0 ----- 0	X					0.	0.	0.	
(4) STEEL JONES ----- Treasurer	0 ----- 0	X					0.	0.	0.	
(5) DAVID L LEFFMAN ----- Secretary	0 ----- 0	X					0.	0.	0.	
(6) PATRICK ROME ----- Vice President	0 ----- 0	X					0.	0.	0.	
(7) -----										
(8) -----										
(9) -----										
(10) -----										
(11) -----										
(12) -----										
(13) -----										
(14) -----										

[Part VII] Section A. Officers, Directors, Trustees, Key Employees, and Highest Compensated Employees (continued)

(A) Name and title	(B) Average hours per week (list any hours for related organizations below dotted line)	(C) Position (do not check more than one box, unless person is both an officer and a director/trustee)						(D) Reportable compensation from the organization (W-2/1099-MISC)	(E) Reportable compensation from related organizations (W-2/1099-MISC)	(F) Estimated amount of other compensation from the organization and related organizations
		Individual trustee or director	Institutional trustee	Officer	Key employee	Highest compensated employee	Former			
(15) -----										
(16) -----										
(17) -----										
(18) -----										
(19) -----										
(20) -----										
(21) -----										
(22) -----										
(23) -----										
(24) -----										
(25) -----										

1 b Sub-total 0. 0. 0.
c Total from continuation sheets to Part VII, Section A 0. 0. 0.
d Total (add lines 1b and 1c) 0. 0. 0.

2 Total number of individuals (including but not limited to those listed above) who received more than \$100,000 of reportable compensation from the organization 0

3 Did the organization list any **former** officer, director, or trustee, key employee, or highest compensated employee on line 1a? *If 'Yes,' complete Schedule J for such individual*

	Yes	No
3		X
4		X
5		X

4 For any individual listed on line 1a, is the sum of reportable compensation and other compensation from the organization and related organizations greater than \$150,000? *If 'Yes,' complete Schedule J for such individual*

5 Did any person listed on line 1a receive or accrue compensation from any unrelated organization or individual for services rendered to the organization? *If 'Yes,' complete Schedule J for such person*

Section B. Independent Contractors

1 Complete this table for your five highest compensated independent contractors that received more than \$100,000 of compensation from the organization Report compensation for the calendar year ending with or within the organization's tax year

(A) Name and business address	(B) Description of services	(C) Compensation

2 Total number of independent contractors (including but not limited to those listed above) who received more than \$100,000 of compensation from the organization 0

Part VIII Statement of Revenue

Check if Schedule O contains a response or note to any line in this Part VIII

		(A) Total revenue	(B) Related or exempt function revenue	(C) Unrelated business revenue	(D) Revenue excluded from tax under sections 512-514	
Contributions, Gifts, Grants and Other Similar Amounts	1 a Federated campaigns	1 a				
	b Membership dues	1 b				
	c Fundraising events	1 c				
	d Related organizations	1 d				
	e Government grants (contributions)	1 e				
	f All other contributions, gifts, grants, and similar amounts not included above	1 f 350.				
	g Noncash contributions included in lines 1a-1f. \$					
h Total. Add lines 1a-1f		350.				
Program Service Revenue	Business Code					
	2 a <u>Membership Dues & Assessments</u>		45,910.		45,910.	
	b <u>HORSE BOARDING</u>		36,686.	36,686.		
	c -----					
	d -----					
	e -----					
	f All other program service revenue					
g Total. Add lines 2a-2f		82,596.				
Other Revenue	3 Investment income (including dividends, interest and other similar amounts)		99.		99.	
	4 Income from investment of tax-exempt bond proceeds					
	5 Royalties					
	6 a Gross rents	(i) Real	12,000.			
		(ii) Personal				
		b Less rental expenses				
		c Rental income or (loss)	12,000.			
	d Net rental income or (loss)		12,000.	12,000.		
	7 a Gross amount from sales of assets other than inventory	(i) Securities				
		(ii) Other				
		b Less cost or other basis and sales expenses				
		c Gain or (loss)				
	d Net gain or (loss)					
	8 a Gross income from fundraising events (not including \$ _____ of contributions reported on line 1c). See Part IV, line 18	a	89,653.			
		b Less direct expenses	54,575.			
c Net income or (loss) from fundraising events			35,078.			
9 a Gross income from gaming activities See Part IV, line 19	a					
	b Less direct expenses					
	c Net income or (loss) from gaming activities					
10 a Gross sales of inventory, less returns and allowances	a	67,886.				
	b Less cost of goods sold	56,944.				
	c Net income or (loss) from sales of inventory		10,942.	10,942.		
Miscellaneous Revenue		Business Code				
11 a <u>INSURANCE REIMBURSEMENT</u>		33,281.			33,281.	
b <u>OTHER INCOME</u>		4,391.			4,391.	
c <u>ARENA INCOME</u>		710.			710.	
d All other revenue						
e Total. Add lines 11a-11d		38,382.				
12 Total revenue. See instructions		179,447.	59,628.	99.	84,292.	

Part IX Statement of Functional Expenses

Section 501(c)(3) and 501(c)(4) organizations must complete all columns. All other organizations must complete column (A).

Check if Schedule O contains a response or note to any line in this Part IX.

Do not include amounts reported on lines 6b, 7b, 8b, 9b, and 10b of Part VIII.	(A) Total expenses	(B) Program service expenses	(C) Management and general expenses	(D) Fundraising expenses
1 Grants and other assistance to domestic organizations and domestic governments See Part IV, line 21				
2 Grants and other assistance to domestic individuals See Part IV, line 22				
3 Grants and other assistance to foreign organizations, foreign governments, and foreign individuals See Part IV, lines 15 and 16				
4 Benefits paid to or for members				
5 Compensation of current officers, directors, trustees, and key employees	0.	0.	0.	0.
6 Compensation not included above, to disqualified persons (as defined under section 4958(f)(1)) and persons described in section 4958(c)(3)(B)	0.	0.	0.	0.
7 Other salaries and wages	25,716.			
8 Pension plan accruals and contributions (include section 401(k) and 403(b) employer contributions)				
9 Other employee benefits				
10 Payroll taxes	2,051.			
11 Fees for services (non-employees):				
a Management				
b Legal				
c Accounting	1,000.			
d Lobbying				
e Professional fundraising services See Part IV, line 17				
f Investment management fees				
g Other (If line 11g amount exceeds 10% of line 25, column (A) amount, list line 11g expenses on Schedule O)				
12 Advertising and promotion				
13 Office expenses				
14 Information technology				
15 Royalties				
16 Occupancy	51,755.		51,755.	
17 Travel				
18 Payments of travel or entertainment expenses for any federal, state, or local public officials				
19 Conferences, conventions, and meetings				
20 Interest				
21 Payments to affiliates				
22 Depreciation, depletion, and amortization	13,837.			
23 Insurance				
24 Other expenses. Itemize expenses not covered above (List miscellaneous expenses in line 24e. If line 24e amount exceeds 10% of line 25, column (A) amount, list line 24e expenses on Schedule O)				
a <u>CORRAL EXPENSES</u>	28,905.			
b <u>INSURANCE</u>	23,881.			
c <u>PROPERTY AND OTHER TAXES</u>	8,616.			
d <u>CREDIT CARD FEES</u>	3,534.			
e All other expenses	1,561.			
25 Total functional expenses Add lines 1 through 24e	160,856.	0.	51,755.	0.
26 Joint costs. Complete this line only if the organization reported in column (B) joint costs from a combined educational campaign and fundraising solicitation. Check here <input type="checkbox"/> if following SOP 98-2 (ASC 958-720).				

Part X Balance Sheet

Check if Schedule O contains a response or note to any line in this Part X

		(A)		(B)
		Beginning of year		End of year
Assets	1 Cash – non-interest-bearing	46,096.	1	47,838.
	2 Savings and temporary cash investments	49,873.	2	49,971.
	3 Pledges and grants receivable, net		3	
	4 Accounts receivable, net	18,626.	4	15,379.
	5 Loans and other receivables from current and former officers, directors, trustees, key employees, and highest compensated employees Complete Part II of Schedule L		5	
	6 Loans and other receivables from other disqualified persons (as defined under section 4958(f)(1)), persons described in section 4958(c)(3)(B), and contributing employers and sponsoring organizations of section 501(c)(9) voluntary employees' beneficiary organizations (see instructions) Complete Part II of Schedule L		6	
	7 Notes and loans receivable, net		7	
	8 Inventories for sale or use	23,661.	8	40,754.
	9 Prepaid expenses and deferred charges	10,569.	9	8,979.
	10a Land, buildings, and equipment, cost or other basis Complete Part VI of Schedule D	10a 734,014.		
	b Less accumulated depreciation	10b 473,108.	255,303.	10c 260,906.
	11 Investments – publicly traded securities		11	
	12 Investments – other securities See Part IV, line 11		12	
	13 Investments – program-related See Part IV, line 11		13	
	14 Intangible assets		14	
	15 Other assets See Part IV, line 11		15	
16 Total assets. Add lines 1 through 15 (must equal line 34)		404,128.	16	423,827.
Liabilities	17 Accounts payable and accrued expenses	8,177.	17	8,460.
	18 Grants payable		18	
	19 Deferred revenue	4,020.	19	4,745.
	20 Tax-exempt bond liabilities		20	
	21 Escrow or custodial account liability. Complete Part IV of Schedule D		21	
	22 Loans and other payables to current and former officers, directors, trustees, key employees, highest compensated employees, and disqualified persons Complete Part II of Schedule L		22	
	23 Secured mortgages and notes payable to unrelated third parties		23	
	24 Unsecured notes and loans payable to unrelated third parties		24	
	25 Other liabilities (including federal income tax, payables to related third parties, and other liabilities not included on lines 17-24) Complete Part X of Schedule D	115.	25	115.
	26 Total liabilities. Add lines 17 through 25	12,312.	26	13,320.
Net Assets or Fund Balances	Organizations that follow SFAS 117 (ASC 958), check here <input type="checkbox"/> and complete lines 27 through 29, and lines 33 and 34.			
	27 Unrestricted net assets		27	
	28 Temporarily restricted net assets		28	
	29 Permanently restricted net assets		29	
	Organizations that do not follow SFAS 117 (ASC 958), check here <input checked="" type="checkbox"/> and complete lines 30 through 34.			
	30 Capital stock or trust principal, or current funds	36,075.	30	36,175.
	31 Paid-in or capital surplus, or land, building, or equipment fund		31	
	32 Retained earnings, endowment, accumulated income, or other funds	355,741.	32	374,332.
33 Total net assets or fund balances	391,816.	33	410,507.	
34 Total liabilities and net assets/fund balances	404,128.	34	423,827.	

Part XI Reconciliation of Net Assets

Check if Schedule O contains a response or note to any line in this Part XI

1	Total revenue (must equal Part VIII, column (A), line 12)	1	179,447.
2	Total expenses (must equal Part IX, column (A), line 25)	2	160,856.
3	Revenue less expenses. Subtract line 2 from line 1	3	18,591.
4	Net assets or fund balances at beginning of year (must equal Part X, line 33, column (A))	4	391,816.
5	Net unrealized gains (losses) on investments	5	
6	Donated services and use of facilities	6	
7	Investment expenses	7	
8	Prior period adjustments	8	
9	Other changes in net assets or fund balances (explain in Schedule O) See Schedule O	9	100.
10	Net assets or fund balances at end of year Combine lines 3 through 9 (must equal Part X, line 33, column (B))	10	410,507.

Part XII Financial Statements and Reporting

Check if Schedule O contains a response or note to any line in this Part XII

		Yes	No
1	Accounting method used to prepare the Form 990 <input checked="" type="checkbox"/> Cash <input type="checkbox"/> Accrual <input type="checkbox"/> Other _____ If the organization changed its method of accounting from a prior year or checked 'Other,' explain in Schedule O		
2 a	Were the organization's financial statements compiled or reviewed by an independent accountant? If 'Yes,' check a box below to indicate whether the financial statements for the year were compiled or reviewed on a separate basis, consolidated basis, or both <input type="checkbox"/> Separate basis <input type="checkbox"/> Consolidated basis <input type="checkbox"/> Both consolidated and separate basis		X
2 b	Were the organization's financial statements audited by an independent accountant? If 'Yes,' check a box below to indicate whether the financial statements for the year were audited on a separate basis, consolidated basis, or both <input type="checkbox"/> Separate basis <input type="checkbox"/> Consolidated basis <input type="checkbox"/> Both consolidated and separate basis		X
2 c	If 'Yes' to line 2a or 2b, does the organization have a committee that assumes responsibility for oversight of the audit, review, or compilation of its financial statements and selection of an independent accountant? If the organization changed either its oversight process or selection process during the tax year, explain in Schedule O		
3 a	As a result of a federal award, was the organization required to undergo an audit or audits as set forth in the Single Audit Act and OMB Circular A-133?		X
3 b	If 'Yes,' did the organization undergo the required audit or audits? If the organization did not undergo the required audit or audits, explain why in Schedule O and describe any steps taken to undergo such audits		

**SCHEDULE D
(Form 990)**

Department of the Treasury
Internal Revenue Service

Supplemental Financial Statements

▶ Complete if the organization answered 'Yes' on Form 990, Part IV, line 6, 7, 8, 9, 10, 11a, 11b, 11c, 11d, 11e, 11f, 12a, or 12b.
▶ Attach to Form 990.

▶ Go to www.irs.gov/Form990 for instructions and the latest information.

OMB No 1545-0047

2018

Open to Public Inspection

Name of the organization

THE SHERIFF'S POSSE, INC

Employer identification number

74-0896297

Part I Organizations Maintaining Donor Advised Funds or Other Similar Funds or Accounts.

Complete if the organization answered 'Yes' on Form 990, Part IV, line 6.

	(a) Donor advised funds	(b) Funds and other accounts
1 Total number at end of year		
2 Aggregate value of contributions to (during year)		
3 Aggregate value of grants from (during year)		
4 Aggregate value at end of year		
5 Did the organization inform all donors and donor advisors in writing that the assets held in donor advised funds are the organization's property, subject to the organization's exclusive legal control?		<input type="checkbox"/> Yes <input type="checkbox"/> No
6 Did the organization inform all grantees, donors, and donor advisors in writing that grant funds can be used only for charitable purposes and not for the benefit of the donor or donor advisor, or for any other purpose conferring impermissible private benefit?		<input type="checkbox"/> Yes <input type="checkbox"/> No

Part II Conservation Easements.

Complete if the organization answered 'Yes' on Form 990, Part IV, line 7.

1 Purpose(s) of conservation easements held by the organization (check all that apply)

Preservation of land for public use (e.g., recreation or education) Preservation of a historically important land area

Protection of natural habitat Preservation of a certified historic structure

Preservation of open space

2 Complete lines 2a through 2d if the organization held a qualified conservation contribution in the form of a conservation easement on the last day of the tax year

	Held at the End of the Tax Year
a Total number of conservation easements	2 a
b Total acreage restricted by conservation easements	2 b
c Number of conservation easements on a certified historic structure included in (a)	2 c
d Number of conservation easements included in (c) acquired after 7/25/06, and not on a historic structure listed in the National Register	2 d

3 Number of conservation easements modified, transferred, released, extinguished, or terminated by the organization during the tax year ▶ _____

4 Number of states where property subject to conservation easement is located ▶ _____

5 Does the organization have a written policy regarding the periodic monitoring, inspection, handling of violations, and enforcement of the conservation easements it holds? Yes No

6 Staff and volunteer hours devoted to monitoring, inspecting, handling of violations, and enforcing conservation easements during the year ▶ _____

7 Amount of expenses incurred in monitoring, inspecting, handling of violations, and enforcing conservation easements during the year ▶ \$ _____

8 Does each conservation easement reported on line 2(d) above satisfy the requirements of section 170(h)(4)(B)(i) and section 170(h)(4)(B)(ii)? Yes No

9 In Part XIII, describe how the organization reports conservation easements in its revenue and expense statement, and balance sheet, and include, if applicable, the text of the footnote to the organization's financial statements that describes the organization's accounting for conservation easements

Part III Organizations Maintaining Collections of Art, Historical Treasures, or Other Similar Assets.

Complete if the organization answered 'Yes' on Form 990, Part IV, line 8.

1 a If the organization elected, as permitted under SFAS 116 (ASC 958), not to report in its revenue statement and balance sheet works of art, historical treasures, or other similar assets held for public exhibition, education, or research in furtherance of public service, provide, in Part XIII, the text of the footnote to its financial statements that describes these items.

b If the organization elected, as permitted under SFAS 116 (ASC 958), to report in its revenue statement and balance sheet works of art, historical treasures, or other similar assets held for public exhibition, education, or research in furtherance of public service, provide the following amounts relating to these items

(i) Revenue included on Form 990, Part VIII, line 1 ▶ \$ _____

(ii) Assets included in Form 990, Part X ▶ \$ _____

2 If the organization received or held works of art, historical treasures, or other similar assets for financial gain, provide the following amounts required to be reported under SFAS 116 (ASC 958) relating to these items.

a Revenue included on Form 990, Part VIII, line 1 ▶ \$ _____

b Assets included in Form 990, Part X ▶ \$ _____

Part III Organizations Maintaining Collections of Art, Historical Treasures, or Other Similar Assets (continued)

3 Using the organization's acquisition, accession, and other records, check any of the following that are a significant use of its collection items (check all that apply)

- a Public exhibition
- b Scholarly research
- c Preservation for future generations
- d Loan or exchange programs
- e Other _____

4 Provide a description of the organization's collections and explain how they further the organization's exempt purpose in Part XIII

5 During the year, did the organization solicit or receive donations of art, historical treasures, or other similar assets to be sold to raise funds rather than to be maintained as part of the organization's collection? Yes No

Part IV Escrow and Custodial Arrangements. Complete if the organization answered 'Yes' on Form 990, Part IV, line 9, or reported an amount on Form 990, Part X, line 21.

1 a Is the organization an agent, trustee, custodian or other intermediary for contributions or other assets not included on Form 990, Part X? Yes No

b If 'Yes,' explain the arrangement in Part XIII and complete the following table

- c Beginning balance
- d Additions during the year
- e Distributions during the year
- f Ending balance

	Amount
1 c	
1 d	
1 e	
1 f	

2 a Did the organization include an amount on Form 990, Part X, line 21, for escrow or custodial account liability? Yes No

b If 'Yes,' explain the arrangement in Part XIII. Check here if the explanation has been provided on Part XIII

Part V Endowment Funds. Complete if the organization answered 'Yes' on Form 990, Part IV, line 10.

	(a) Current year	(b) Prior year	(c) Two years back	(d) Three years back	(e) Four years back
1 a Beginning of year balance					
b Contributions					
c Net investment earnings, gains, and losses					
d Grants or scholarships					
e Other expenditures for facilities and programs					
f Administrative expenses					
g End of year balance					

2 Provide the estimated percentage of the current year end balance (line 1g, column (a)) held as

- a Board designated or quasi-endowment ▶ _____ %
 - b Permanent endowment ▶ _____ %
 - c Temporarily restricted endowment ▶ _____ %
- The percentages on lines 2a, 2b, and 2c should equal 100%

3 a Are there endowment funds not in the possession of the organization that are held and administered for the organization by

- (i) unrelated organizations
- (ii) related organizations

	Yes	No
3a(i)		
3a(ii)		
3b		

b If 'Yes' on line 3a(ii), are the related organizations listed as required on Schedule R?

4 Describe in Part XIII the intended uses of the organization's endowment funds

Part VI Land, Buildings, and Equipment.

Complete if the organization answered 'Yes' on Form 990, Part IV, line 11a. See Form 990, Part X, line 10.

Description of property	(a) Cost or other basis (investment)	(b) Cost or other basis (other)	(c) Accumulated depreciation	(d) Book value
1 a Land				
b Buildings		734,014.	473,108.	260,906.
c Leasehold improvements				
d Equipment				
e Other				

Total. Add lines 1a through 1e (Column (d) must equal Form 990, Part X, column (B), line 10c.) ▶ 260,906.

Part VII Investments – Other Securities.

N/A

Complete if the organization answered 'Yes' on Form 990, Part IV, line 11b. See Form 990, Part X, line 12.

(a) Description of security or category (including name of security)	(b) Book value	(c) Method of valuation. Cost or end-of-year market value
(1) Financial derivatives		
(2) Closely-held equity interests		
(3) Other		
(A) -----		
(B) -----		
(C) -----		
(D) -----		
(E) -----		
(F) -----		
(G) -----		
(H) -----		
(I) -----		
Total. (Column (b) must equal Form 990, Part X, column (B) line 12.)		

Part VIII Investments – Program Related.

N/A

Complete if the organization answered 'Yes' on Form 990, Part IV, line 11c. See Form 990, Part X, line 13.

(a) Description of investment	(b) Book value	(c) Method of valuation. Cost or end-of-year market value
(1)		
(2)		
(3)		
(4)		
(5)		
(6)		
(7)		
(8)		
(9)		
(10)		
Total. (Column (b) must equal Form 990, Part X, column (B) line 13.)		

Part IX Other Assets.

N/A

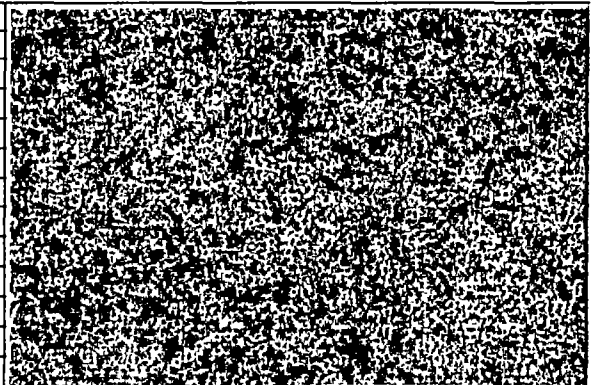
Complete if the organization answered 'Yes' on Form 990, Part IV, line 11d. See Form 990, Part X, line 15.

(a) Description	(b) Book value
(1)	
(2)	
(3)	
(4)	
(5)	
(6)	
(7)	
(8)	
(9)	
(10)	
Total. (Column (b) must equal Form 990, Part X, column (B) line 15.)	

Part X Other Liabilities.

Complete if the organization answered 'Yes' on Form 990, Part IV, line 11e or 11f. See Form 990, Part X, line 25.

(a) Description of liability	(b) Book value
(1) Federal income taxes	
(2) DESIGNATED FUNDS	115.
(3)	
(4)	
(5)	
(6)	
(7)	
(8)	
(9)	
(10)	
(11)	
Total. (Column (b) must equal Form 990, Part X, column (B) line 25.)	115.



2. Liability for uncertain tax positions In Part XIII, provide the text of the footnote to the organization's financial statements that reports the organization's liability for uncertain tax positions under FIN 48 (ASC 740). Check here if the text of the footnote has been provided in Part XIII

Part XI Reconciliation of Revenue per Audited Financial Statements With Revenue per Return. N/A

Complete if the organization answered 'Yes' on Form 990, Part IV, line 12a.

1	Total revenue, gains, and other support per audited financial statements		1	
2	Amounts included on line 1 but not on Form 990, Part VIII, line 12			
	a Net unrealized gains (losses) on investments	2 a		
	b Donated services and use of facilities	2 b		
	c Recoveries of prior year grants	2 c		
	d Other (Describe in Part XIII)	2 d		
	e Add lines 2a through 2d		2 e	
3	Subtract line 2e from line 1		3	
4	Amounts included on Form 990, Part VIII, line 12, but not on line 1			
	a Investment expenses not included on Form 990, Part VIII, line 7b	4 a		
	b Other (Describe in Part XIII)	4 b		
	c Add lines 4a and 4b		4 c	
5	Total revenue Add lines 3 and 4c. (This must equal Form 990, Part I, line 12.)		5	

Part XII Reconciliation of Expenses per Audited Financial Statements With Expenses per Return. N/A

Complete if the organization answered 'Yes' on Form 990, Part IV, line 12a.

1	Total expenses and losses per audited financial statements		1	
2	Amounts included on line 1 but not on Form 990, Part IX, line 25:			
	a Donated services and use of facilities	2 a		
	b Prior year adjustments	2 b		
	c Other losses	2 c		
	d Other (Describe in Part XIII)	2 d		
	e Add lines 2a through 2d		2 e	
3	Subtract line 2e from line 1		3	
4	Amounts included on Form 990, Part IX, line 25, but not on line 1:			
	a Investment expenses not included on Form 990, Part VIII, line 7b	4 a		
	b Other (Describe in Part XIII)	4 b		
	c Add lines 4a and 4b		4 c	
5	Total expenses Add lines 3 and 4c. (This must equal Form 990, Part I, line 18.)		5	

Part XIII Supplemental Information.

Provide the descriptions required for Part II, lines 3, 5, and 9, Part III, lines 1a and 4, Part IV, lines 1b and 2b, Part V, line 4, Part X, line 2, Part XI, lines 2d and 4b, and Part XII, lines 2d and 4b Also complete this part to provide any additional information

SCHEDULE G
(Form 990 or 990-EZ)

Department of the Treasury
Internal Revenue Service

Supplemental Information Regarding Fundraising or Gaming Activities

Complete if the organization answered 'Yes' on Form 990, Part IV, line 17, 18, or 19, or if the organization entered more than \$15,000 on Form 990-EZ, line 6a

▶ Attach to Form 990 or Form 990-EZ.

▶ Go to www.irs.gov/Form990 for instructions and the latest information.

OMB No 1545-0047

2018

Open to Public Inspection

Name of the organization

THE SHERIFF'S POSSE, INC

Employer identification number

74-0896297

Part I Fundraising Activities. Complete if the organization answered 'Yes' on Form 990, Part IV, line 17
Form 990-EZ filers are not required to complete this part.

1 Indicate whether the organization raised funds through any of the following activities. Check all that apply.

- a Mail solicitations
- b Internet and email solicitations
- c Phone solicitations
- d In-person solicitations
- e Solicitation of non-government grants
- f Solicitation of government grants
- g Special fundraising events

2 a Did the organization have a written or oral agreement with any individual (including officers, directors, trustees, or key employees listed in Form 990, Part VII) or entity in connection with professional fundraising services? Yes No

b If 'Yes,' list the 10 highest paid individuals or entities (fundraisers) pursuant to agreements under which the fundraiser is to be compensated at least \$5,000 by the organization

(i) Name and address of individual or entity (fundraiser)	(ii) Activity	(iii) Did fundraiser have custody or control of contributions?		(iv) Gross receipts from activity	(v) Amount paid to (or retained by) fundraiser listed in column (i)	(vi) Amount paid to (or retained by) organization
		Yes	No			
1						
2						
3						
4						
5						
6						
7						
8						
9						
10						
Total						0.

3 List all states in which the organization is registered or licensed to solicit contributions or has been notified it is exempt from registration or licensing

Part III Fundraising Events. Complete if the organization answered 'Yes' on Form 990, Part IV, line 18, or reported more than \$15,000 of fundraising event contributions and gross income on Form 990-EZ, lines 1 and 6b. List events with gross receipts greater than \$5,000.

REVENUE	(a) Event #1	(b) Event #2	(c) Other events	(d) Total events	
	<u>EXTREME COWBOY</u> (event type)	<u>BALLS OUT FUND</u> (event type)	<u>4</u> (total number)	(add column (a) through column (c))	
1 Gross receipts	20,750.	17,528.	45,596.	83,874.	
2 Less Contributions					
3 Gross income (line 1 minus line 2)	20,750.	17,528.	45,596.	83,874.	
DIRECT EXPENSES	4 Cash prizes				
	5 Noncash prizes				
	6 Rent/facility costs				
	7 Food and beverages				
	8 Entertainment				
	9 Other direct expenses	13,374.	9,467.	24,286.	47,127.
	10 Direct expense summary. Add lines 4 through 9 in column (d)				47,127.
11 Net income summary Subtract line 10 from line 3, column (d)				36,747.	

Part III Gaming. Complete if the organization answered 'Yes' on Form 990, Part IV, line 19, or reported more than \$15,000 on Form 990-EZ, line 6a.

REVENUE	(a) Bingo	(b) Pull tabs/instant bingo/progressive bingo	(c) Other gaming	(d) Total gaming
	(add column (a) through column (c))			
1 Gross revenue				
DIRECT EXPENSES	2 Cash prizes			
	3 Noncash prizes			
	4 Rent/facility costs			
	5 Other direct expenses			
	6 Volunteer labor	<input type="checkbox"/> Yes _____ % <input type="checkbox"/> No	<input type="checkbox"/> Yes _____ % <input type="checkbox"/> No	<input type="checkbox"/> Yes _____ % <input type="checkbox"/> No
7 Direct expense summary Add lines 2 through 5 in column (d)				
8 Net gaming income summary. Subtract line 7 from line 1, column (d)				

9 Enter the state(s) in which the organization conducts gaming activities: _____
 a Is the organization licensed to conduct gaming activities in each of these states? Yes No
 b If 'No,' explain: _____

 10 a Were any of the organization's gaming licenses revoked, suspended, or terminated during the tax year? Yes No
 b If 'Yes,' explain: _____

- 11 Does the organization conduct gaming activities with nonmembers? Yes No
- 12 Is the organization a grantor, beneficiary or trustee of a trust, or a member of a partnership or other entity formed to administer charitable gaming? Yes No

13 Indicate the percentage of gaming activity conducted in

a The organization's facility

b An outside facility

13 a		%
13 b		%

14 Enter the name and address of the person who prepares the organization's gaming/special events books and records:

Name ▶ -----

Address ▶ -----

15 a Does the organization have a contract with a third party from whom the organization receives gaming revenue? Yes No

b If 'Yes,' enter the amount of gaming revenue received by the organization ▶ \$ ----- and the amount of gaming revenue retained by the third party ▶ \$ -----

c If 'Yes,' enter name and address of the third party

Name ▶ -----

Address ▶ -----

16 Gaming manager information

Name ▶ -----

Gaming manager compensation ▶ \$ -----

Description of services provided ▶ -----

- Director/officer
- Employee
- Independent contractor

17 Mandatory distributions

a Is the organization required under state law to make charitable distributions from the gaming proceeds to retain the state gaming license? Yes No

b Enter the amount of distributions required under state law to be distributed to other exempt organizations or spent in the organization's own exempt activities during the tax year ▶ \$ -----

Part IV Supplemental Information. Provide the explanations required by Part I, line 2b, columns (iii) and (v); and Part III, lines 9, 9b, 10b, 15b, 15c, 16, and 17b, as applicable. Also provide any additional information. See instructions.

SCHEDULE O
(Form 990 or 990-EZ)

Department of the Treasury
Internal Revenue Service

Supplemental Information to Form 990 or 990-EZ

Complete to provide information for responses to specific questions on
Form 990 or 990-EZ or to provide any additional information.
▶ Attach to Form 990 or 990-EZ.

▶ Go to www.irs.gov/Form990 for the latest information.

OMB No 1545-0047

2018

Open to Public
Inspection

Name of the organization

THE SHERIFF'S POSSE, INC

Employer identification number

74-0896297

Form 990, Part VI, Line 11b - Form 990 Review Process

990 REVIEWED BY TREASURER AND PRESENTED AT BOARD MEETING

Form 990, Part VI, Line 19 - Other Organization Documents Publicly Available

FORM 990 AVAILABLE TO MEMBERS UPON REQUEST

Form 990, Part XI, Line 9

Other Changes In Net Assets Or Fund Balances

INCREASE IN MEMBERS

Total \$ 100.
\$ 100.