

Return of Organization Exempt From Income Tax

2018

Under section 501(c), 527, or 4947(a)(1) of the Internal Revenue Code (except private foundations)

Do not enter social security numbers on this form as it may be made public. Go to www.irs.gov/Form990 for instructions and the latest information.

Open to Public Inspection

Department of the Treasury Internal Revenue Service

A For the 2018 calendar year, or tax year beginning 2018, and ending 20

Form 990 header section containing organization name (THE SHASHAMANE FOUNDATION INC), EIN (52-2158855), address (Takoma Park, MD 20913), and tax-exempt status (501(c)(3)).

Part I Summary

Summary table with 22 rows detailing mission (CHARITABLE FOUNDATION), revenue (Total revenue 22,362), expenses (Total expenses 23,720), and net assets (Net assets 2,605).

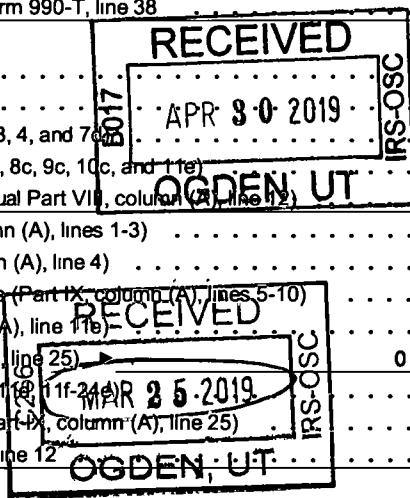
Part II Signature Block

Signature block containing the signature of Karl Phillpotts, president, dated 3/17/2019.

Preparer information section for J WILLIAMS of ACCON SERVICES, dated 03-11-2019, with phone number 202-291-8849.

May the IRS discuss this return with the preparer shown above? (see instructions) Yes No

Vertical handwritten notes: JUL 29 2019, SCARRIVED, EXPENSES



Large handwritten number 929 in the bottom right corner.

Part III Statement of Program Service Accomplishments

Check if Schedule O contains a response or note to any line in this Part III

1 Briefly describe the organization's mission:

CHARITABLE FOUNDATION

2 Did the organization undertake any significant program services during the year which were not listed on the prior Form 990 or 990-EZ? Yes No

3 Did the organization cease conducting, or make significant changes in how it conducts, any program services? Yes No

4 Describe the organization's program service accomplishments for each of its three largest program services, as measured by expenses Section 501(c)(3) and 501(c)(4) organizations are required to report the amount of grants and allocations to others, the total expenses, and revenue, if any, for each program service reported

4a (Code ) (Expenses \$ 23,780 including grants of \$ 15,300 ) (Revenue \$ 22,360 )

CHARITABLE FOUNDATION

4b (Code ) (Expenses \$ including grants of \$ ) (Revenue \$ )

4c (Code: ) (Expenses \$ including grants of \$ ) (Revenue \$ )

4d Other program services (Describe in Schedule O ) (Expenses \$ including grants of \$ ) (Revenue \$ )

4e Total program service expenses 23,780

ABO

Part IV Checklist of Required Schedules

Table with 3 columns: Question Number, Yes, No. Rows 1-21 detailing various organizational requirements and their completion status.

Part IV Checklist of Required Schedules (continued)

Table with 3 columns: Question, Yes, No. Rows 22-38 covering various IRS requirements like grants, compensation, bond issues, and excess benefit transactions.

Part V Statements Regarding Other IRS Filings and Tax Compliance

Check if Schedule O contains a response or note to any line in this Part V

Table with 3 columns: Question, Yes, No. Rows 1a-1c regarding Form 1096, Form W-2G, and backup withholding rules.

Part V Statements Regarding Other IRS Filings and Tax Compliance (continued)

Table with columns for question number, description, and Yes/No response boxes. Includes questions 2a through 16 regarding employee reporting, tax returns, unrelated business income, foreign accounts, prohibited transactions, and charitable contributions.

Part VI Governance, Management, and Disclosure For each "Yes" response to lines 2 through 7b below, and for a "No" response to line 8a, 8b, or 10b below, describe the circumstances, processes, or changes in Schedule O See instructions

Check if Schedule O contains a response or note to any line in this Part VI

Section A. Governing Body and Management

Table with 5 columns: Question, Line Number, Yes, No. Rows include questions about voting members, family relationships, management delegation, and document retention.

Section B. Policies (This Section B requests information about policies not required by the Internal Revenue Code.)

Table with 5 columns: Question, Line Number, Yes, No. Rows include questions about local chapters, conflict of interest policies, whistleblower policies, and compensation review.

Section C. Disclosure

- 17 List the states with which a copy of this Form 990 is required to be filed - Maryland
18 Section 6104 requires an organization to make its Forms 1023 (1024 or 1024-A if applicable), 990, and 990-T (Section 501(c) (3)s only) available for public inspection.
19 Describe in Schedule O whether (and if so, how) the organization made its governing documents, conflict of interest policy, and financial statements available to the public during the tax year.
20 State the name, address, and telephone number of the person who possesses the organization's books and records - RYLAND MCPHERSON, 25 (301)213-2828, P O BOX 5845, Takoma Park, MD 20913

**Part VII Compensation of Officers, Directors, Trustees, Key Employees, Highest Compensated Employees, and Independent Contractors**

Check if Schedule O contains a response or note to any line in this Part VII

**Section A. Officers, Directors, Trustees, Key Employees, and Highest Compensated Employees**

1a Complete this table for all persons required to be listed. Report compensation for the calendar year ending with or within the organization's tax year

- List all of the organization's **current** officers, directors, trustees (whether individuals or organizations), regardless of amount of compensation. Enter -0- in columns (D), (E), and (F) if no compensation was paid.
- List all of the organization's **current** key employees, if any. See instructions for definition of "key employee."
- List the organization's five **current** highest compensated employees (other than an officer, director, trustee, or key employee) who received reportable compensation (Box 5 of Form W-2 and/or Box 7 of Form 1099-MISC) of more than \$100,000 from the organization and any related organizations.
- List all of the organization's **former** officers, key employees, and highest compensated employees who received more than \$100,000 of reportable compensation from the organization and any related organizations.
- List all of the organization's **former** directors or trustees that received, in the capacity as a former director or trustee of the organization, more than \$10,000 of reportable compensation from the organization and any related organizations.

List persons in the following order: individual trustees or directors; institutional trustees; officers; key employees; highest compensated employees; and former such persons

Check this box if neither the organization nor any related organization compensated any current officer, director, or trustee.

(A) Name and Title	(B) Average hours per week (list any hours for related organizations below dotted line)	(C) Position (do not check more than one box, unless person is both an officer and a director/trustee)						(D) Reportable compensation from the organization (W-2/1099-MISC)	(E) Reportable compensation from related organizations (W-2/1099-MISC)	(F) Estimated amount of other compensation from the organization and related organizations
		Individual trustee or director	Institutional trustee	Officer	Key employee	Highest compensated employee	Former			
(1) <u>KARL PHILLPOTTS</u> <u>PRESIDENT</u>	<u>25.00</u>			X				0	0	0
(2) <u>RYLAND MCPHERSON, 25</u> <u>SECRETARY</u>	<u>25.00</u>			X				0	0	0
(3) <u>ZANABE HENRY, 10</u> <u>TREASURER</u>	<u>10.00</u>			X				0	0	0
(4) <u>VALERIE PHILLPOTTS, 5</u>	<u>5.00</u>			X				0	0	0
(5) _____										
(6) _____										
(7) _____										
(8) _____										
(9) _____										
(10) _____										
(11) _____										
(12) _____										
(13) _____										
(14) _____										

**Part VII** Section A. Officers, Directors, Trustees, Key Employees, and Highest Compensated Employees (continued)

(A) Name and title	(B) Average hours per week (list any hours for related organizations below dotted line)	(C) Position (do not check more than one box, unless person is both an officer and a director/trustee)						(D) Reportable compensation from the organization (W-2/1099-MISC)	(E) Reportable compensation from related organizations (W-2/1099-MISC)	(F) Estimated amount of other compensation from the organization and related organizations
		Individual trustee or director	Institutional trustee	Officer	Key employee	Highest compensated employee	Former			
(15) _____	_____									
(16) _____	_____									
(17) _____	_____									
(18) _____	_____									
(19) _____	_____									
(20) _____	_____									
(21) _____	_____									
(22) _____	_____									
(23) _____	_____									
(24) _____	_____									
(25) _____	_____									
<b>1b Sub-total</b> .....										
<b>c Total from continuation sheets to Part VII, Section A</b> .....										
<b>d Total (add lines 1b and 1c)</b> .....							0	0	0	

**2** Total number of individuals (including but not limited to those listed above) who received more than \$100,000 of reportable compensation from the organization **0**

	Yes	No
<b>3</b> Did the organization list any former officer, director, or trustee, key employee, or highest compensated employee on line 1a? If "Yes," complete Schedule J for such individual .....		X
<b>4</b> For any individual listed on line 1a, is the sum of reportable compensation and other compensation from the organization and related organizations greater than \$150,000? If "Yes," complete Schedule J for such individual .....		X
<b>5</b> Did any person listed on line 1a receive or accrue compensation from any unrelated organization or individual for services rendered to the organization? If "Yes," complete Schedule J for such person .....		X

**Section B. Independent Contractors**

**1** Complete this table for your five highest compensated independent contractors that received more than \$100,000 of compensation from the organization Report compensation for the calendar year ending with or within the organization's tax year

(A) Name and business address	(B) Description of services	(C) Compensation

**2** Total number of independent contractors (including but not limited to those listed above) who received more than \$100,000 of compensation from the organization **0**

**Part VIII** Statement of Revenue

Check if Schedule O contains a response or note to any line in this Part VIII

		(A) Total revenue	(B) Related or exempt function revenue	(C) Unrelated business revenue	(D) Revenue excluded from tax under sections 512-514	
<b>Contributions, Gifts, Grants and Other Similar Amounts</b>	<b>1a</b> Federated campaigns . . . . .	<b>1a</b>				
	<b>b</b> Membership dues . . . . .	<b>1b</b>				
	<b>c</b> Fundraising events . . . . .	<b>1c</b> 4,566				
	<b>d</b> Related organizations . . . . .	<b>1d</b>				
	<b>e</b> Government grants (contributions) . . . . .	<b>1e</b>				
	<b>f</b> All other contributions, gifts, grants, and similar amounts not included above	<b>1f</b> 17,796				
	<b>g</b> Noncash contributions included in lines 1a-1f \$					
	<b>h Total.</b> Add lines 1a-1f . . . . . ▶		22,362			
<b>Program Service Revenue</b>	<b>2a</b> _____ Business Code					
	<b>b</b> _____					
	<b>c</b> _____					
	<b>d</b> _____					
	<b>e</b> _____					
	<b>f</b> All other program service revenue . . . . .					
	<b>g Total.</b> Add lines 2a-2f . . . . . ▶					
<b>Other Revenue</b>	<b>3</b> Investment income (including dividends, interest and other similar amounts) . . . . . ▶					
	<b>4</b> Income from investment of tax-exempt bond proceeds . . . . . ▶					
	<b>5</b> Royalties . . . . . ▶					
	<b>6a</b> Gross rents . . . . .	(i) Real				
		(ii) Personal				
	<b>b</b> Less rental expenses . . . . .					
	<b>c</b> Rental income or (loss) . . . . .					
	<b>d</b> Net rental income or (loss) . . . . . ▶					
	<b>7a</b> Gross amount from sales of assets other than inventory	(i) Securities				
		(ii) Other				
	<b>b</b> Less cost or other basis and sales expenses . . . . .					
	<b>c</b> Gain or (loss) . . . . .					
	<b>d</b> Net gain or (loss) . . . . . ▶					
	<b>8a</b> Gross income from fundraising events (not including \$ 4,566 of contributions reported on line 1c) See Part IV, line 18 . . . . . <b>a</b>					
	<b>b</b> Less direct expenses . . . . . <b>b</b>					
	<b>c</b> Net income or (loss) from fundraising events . . . . . ▶					
	<b>9a</b> Gross income from gaming activities See Part IV, line 19 . . . . . <b>a</b>					
<b>b</b> Less direct expenses . . . . . <b>b</b>						
<b>c</b> Net income or (loss) from gaming activities . . . . . ▶						
<b>10a</b> Gross sales of inventory, less returns and allowances . . . . . <b>a</b>						
<b>b</b> Less: cost of goods sold . . . . . <b>b</b>						
<b>c</b> Net income or (loss) from sales of inventory . . . . . ▶						
<b>Miscellaneous Revenue</b>		<b>Business Code</b>				
<b>11a</b> _____						
<b>b</b> _____						
<b>c</b> _____						
<b>d</b> All other revenue . . . . .						
<b>e Total.</b> Add lines 11a-11d . . . . . ▶						
<b>12 Total revenue.</b> See instructions . . . . . ▶		22,362	0	0	0	

**Part IX: Statement of Functional Expenses**

Section 501(c)(3) and 501(c)(4) organizations must complete all columns. All other organizations must complete column (A).

Check if Schedule O contains a response or note to any line in this Part IX

**Do not include amounts reported on lines 6b, 7b, 8b, 9b, and 10b of Part VIII.**

	(A) Total expenses	(B) Program service expenses	(C) Management and general expenses	(D) Fundraising expenses
1 Grants and other assistance to domestic organizations and domestic governments See Part IV, line 21 . . . . .				
2 Grants and other assistance to domestic individuals See Part IV, line 22 . . . . .				
3 Grants and other assistance to foreign organizations, foreign governments, and foreign individuals See Part IV, lines 15 and 16 . . . . .	15,300	15,300		
4 Benefits paid to or for members . . . . .				
5 Compensation of current officers, directors, trustees, and key employees . . . . .				
6 Compensation not included above, to disqualified persons (as defined under section 4958(f)(1)) and persons described in section 4958(c)(3)(B) . . . . .				
7 Other salaries and wages . . . . .				
8 Pension plan accruals and contributions (include section 401(k) and 403(b) employer contributions) . . . . .				
9 Other employee benefits . . . . .				
10 Payroll taxes . . . . .				
11 Fees for services (non-employees)				
a Management . . . . .				
b Legal . . . . .				
c Accounting . . . . .				
d Lobbying . . . . .				
e Professional fundraising services See Part IV, line 17 . . . . .				
f Investment management fees . . . . .				
g Other. (If line 11g amount exceeds 10% of line 25, column (A) amount, list line 11g expenses on Schedule O) . . . . .	8,420	8,420		
12 Advertising and promotion . . . . .				
13 Office expenses . . . . .				
14 Information technology . . . . .				
15 Royalties . . . . .				
16 Occupancy . . . . .				
17 Travel . . . . .				
18 Payments of travel or entertainment expenses for any federal, state, or local public officials . . . . .				
19 Conferences, conventions, and meetings . . . . .				
20 Interest . . . . .				
21 Payments to affiliates . . . . .				
22 Depreciation, depletion, and amortization . . . . .				
23 Insurance . . . . .				
24 Other expenses Itemize expenses not covered above (List miscellaneous expenses in line 24e. If line 24e amount exceeds 10% of line 25, column (A) amount, list line 24e expenses on Schedule O.)				
a _____				
b _____				
c _____				
d _____				
e All other expenses _____				
25 <b>Total functional expenses.</b> Add lines 1 through 24e . . . . .	23,720	23,720	0	0
26 <b>Joint costs.</b> Complete this line only if the organization reported in column (B) joint costs from a combined educational campaign and fundraising solicitation. Check here <input type="checkbox"/> if following SOP 98-2 (ASC 958-720) . . . . .				

**Part X Balance Sheet**

Check if Schedule O contains a response or note to any line in this Part X

		(A)		(B)
		Beginning of year		End of year
<b>Assets</b>	<b>1</b> Cash - non-interest-bearing		<b>1</b>	
	<b>2</b> Savings and temporary cash investments		<b>2</b>	
	<b>3</b> Pledges and grants receivable, net	<b>17,385</b>	<b>3</b>	<b>22,362</b>
	<b>4</b> Accounts receivable, net		<b>4</b>	
	<b>5</b> Loans and other receivables from current and former officers, directors, trustees, key employees, and highest compensated employees Complete Part II of Schedule L		<b>5</b>	
	<b>6</b> Loans and other receivables from other disqualified persons (as defined under section 4958(f)(1)), persons described in section 4958(c)(3)(B), and contributing employers and sponsoring organizations of section 501(c)(9) voluntary employees' beneficiary organizations (see instructions) Complete Part II of Schedule L		<b>6</b>	
	<b>7</b> Notes and loans receivable, net	<b>4,350</b>	<b>7</b>	
	<b>8</b> Inventories for sale or use		<b>8</b>	
	<b>9</b> Prepaid expenses and deferred charges		<b>9</b>	
	<b>10a</b> Land, buildings, and equipment: cost or other basis Complete Part VI of Schedule D	<b>10a</b>		
	<b>b</b> Less: accumulated depreciation	<b>10b</b>	<b>10c</b>	
	<b>11</b> Investments - publicly traded securities		<b>11</b>	
	<b>12</b> Investments - other securities See Part IV, line 11		<b>12</b>	
	<b>13</b> Investments - program-related See Part IV, line 11		<b>13</b>	
	<b>14</b> Intangible assets		<b>14</b>	
	<b>15</b> Other assets See Part IV, line 11		<b>15</b>	
<b>16</b> Total assets. Add lines 1 through 15 (must equal line 34)	<b>21,735</b>	<b>16</b>	<b>22,362</b>	
<b>Liabilities</b>	<b>17</b> Accounts payable and accrued expenses		<b>17</b>	
	<b>18</b> Grants payable	<b>14,340</b>	<b>18</b>	
	<b>19</b> Deferred revenue		<b>19</b>	
	<b>20</b> Tax-exempt bond liabilities		<b>20</b>	
	<b>21</b> Escrow or custodial account liability Complete Part IV of Schedule D		<b>21</b>	
	<b>22</b> Loans and other payables to current and former officers, directors, trustees, key employees, highest compensated employees, and disqualified persons Complete Part II of Schedule L		<b>22</b>	
	<b>23</b> Secured mortgages and notes payable to unrelated third parties		<b>23</b>	
	<b>24</b> Unsecured notes and loans payable to unrelated third parties	<b>4,790</b>	<b>24</b>	
	<b>25</b> Other liabilities (including federal income tax, payables to related third parties, and other liabilities not included on lines 17-24) Complete Part X of Schedule D		<b>25</b>	
	<b>26</b> Total liabilities. Add lines 17 through 25	<b>19,130</b>	<b>26</b>	<b>0</b>
<b>Net Assets or Fund Balances</b>	<b>Organizations that follow SFAS 117 (ASC 958), check here <input type="checkbox"/> and complete lines 27 through 29, and lines 33 and 34.</b>			
	<b>27</b> Unrestricted net assets		<b>27</b>	
	<b>28</b> Temporarily restricted net assets		<b>28</b>	
	<b>29</b> Permanently restricted net assets		<b>29</b>	
	<b>Organizations that do not follow SFAS 117 (ASC 958), check here <input checked="" type="checkbox"/> and complete lines 30 through 34.</b>			
	<b>30</b> Capital stock or trust principal, or current funds		<b>30</b>	
	<b>31</b> Paid-in or capital surplus, or land, building, or equipment fund		<b>31</b>	
	<b>32</b> Retained earnings, endowment, accumulated income, or other funds	<b>2,605</b>	<b>32</b>	<b>22,362</b>
<b>33</b> Total net assets or fund balances	<b>2,605</b>	<b>33</b>	<b>22,362</b>	
<b>34</b> Total liabilities and net assets/fund balances	<b>21,735</b>	<b>34</b>	<b>22,362</b>	

**Part XI Reconciliation of Net Assets**

Check if Schedule O contains a response or note to any line in this Part XI

1	Total revenue (must equal Part VIII, column (A), line 12)	1	22,362
2	Total expenses (must equal Part IX, column (A), line 25)	2	23,720
3	Revenue less expenses. Subtract line 2 from line 1	3	(1,358)
4	Net assets or fund balances at beginning of year (must equal Part X, line 33, column (A))	4	2,605
5	Net unrealized gains (losses) on investments	5	
6	Donated services and use of facilities	6	
7	Investment expenses	7	
8	Prior period adjustments	8	
9	Other changes in net assets or fund balances (explain in Schedule O)	9	0
10	Net assets or fund balances at end of year. Combine lines 3 through 9 (must equal Part X, line 33, column (B))	10	1,247

**Part XII Financial Statements and Reporting**

Check if Schedule O contains a response or note to any line in this Part XII

1 Accounting method used to prepare the Form 990:  Cash  Accrual  Other **DONATION**

If the organization changed its method of accounting from a prior year or checked "Other," explain in Schedule O

2a Were the organization's financial statements compiled or reviewed by an independent accountant?

If "Yes," check a box below to indicate whether the financial statements for the year were compiled or reviewed on a separate basis, consolidated basis, or both:

Separate basis  Consolidated basis  Both consolidated and separate basis

b Were the organization's financial statements audited by an independent accountant?

If "Yes," check a box below to indicate whether the financial statements for the year were audited on a separate basis, consolidated basis, or both:

Separate basis  Consolidated basis  Both consolidated and separate basis

c If "Yes" to line 2a or 2b, does the organization have a committee that assumes responsibility for oversight of the audit, review, or compilation of its financial statements and selection of an independent accountant?

If the organization changed either its oversight process or selection process during the tax year, explain in Schedule O

3a As a result of a federal award, was the organization required to undergo an audit or audits as set forth in the Single Audit Act and OMB Circular A-133?

b If "Yes," did the organization undergo the required audit or audits? If the organization did not undergo the required audit or audits, explain why in Schedule O and describe any steps taken to undergo such audits

	Yes	No
2a	X	
2b	X	
2c		X
3a		X
3b		

**SCHEDULE A**  
**(Form 990 or 990-EZ)**

Department of the Treasury  
Internal Revenue Service

**Public Charity Status and Public Support**

Complete if the organization is a section 501(c)(3) organization or a section 4947(a)(1) nonexempt charitable trust.

▶ Attach to Form 990 or Form 990-EZ.

▶ Go to [www.irs.gov/Form990](http://www.irs.gov/Form990) for instructions and the latest information.

OMB No 1545-0047

**2018**

**Open to Public Inspection**

Name of the organization

**THE SHASHAMANE FOUNDATION INC**

Employer identification number

**52-2158855**

**Part I Reason for Public Charity Status** (All organizations must complete this part.) See instructions.

The organization is not a private foundation because it is (For lines 1 through 12, check only one box.)

- 1  A church, convention of churches, or association of churches described in **section 170(b)(1)(A)(i)**.
- 2  A school described in **section 170(b)(1)(A)(ii)**. (Attach Schedule E (Form 990 or 990-EZ) )
- 3  A hospital or a cooperative hospital service organization described in **section 170(b)(1)(A)(iii)**.
- 4  A medical research organization operated in conjunction with a hospital described in **section 170(b)(1)(A)(iii)**. Enter the hospital's name, city, and state: \_\_\_\_\_
- 5  An organization operated for the benefit of a college or university owned or operated by a governmental unit described in **section 170(b)(1)(A)(iv)**. (Complete Part II.)
- 6  A federal, state, or local government or governmental unit described in **section 170(b)(1)(A)(v)**.
- 7  An organization that normally receives a substantial part of its support from a governmental unit or from the general public described in **section 170(b)(1)(A)(vi)**. (Complete Part II.)
- 8  A community trust described in **section 170(b)(1)(A)(vi)**. (Complete Part II.)
- 9  An agricultural research organization described in **section 170(b)(1)(A)(ix)** operated in conjunction with a land-grant college or university or a non-land-grant college of agriculture (see instructions) Enter the name, city, and state of the college or university: \_\_\_\_\_
- 10  An organization that normally receives: (1) more than 33 1/3% of its support from contributions, membership fees, and gross receipts from activities related to its exempt functions - subject to certain exceptions, and (2) no more than 33 1/3% of its support from gross investment income and unrelated business taxable income (less section 511 tax) from businesses acquired by the organization after June 30, 1975 See **section 509(a)(2)**. (Complete Part III.)
- 11  An organization organized and operated exclusively to test for public safety. See **section 509(a)(4)**.
- 12  An organization organized and operated exclusively for the benefit of, to perform the functions of, or to carry out the purposes of one or more publicly supported organizations described in **section 509(a)(1)** or **section 509(a)(2)** See **section 509(a)(3)**.  
Check the box in lines 12a through 12d that describes the type of supporting organization and complete lines 12e, 12f, and 12g
  - a  **Type I.** A supporting organization operated, supervised, or controlled by its supported organization(s), typically by giving the supported organization(s) the power to regularly appoint or elect a majority of the directors or trustees of the supporting organization. **You must complete Part IV, Sections A and B.**
  - b  **Type II.** A supporting organization supervised or controlled in connection with its supported organization(s), by having control or management of the supporting organization vested in the same persons that control or manage the supported organization(s) **You must complete Part IV, Sections A and C.**
  - c  **Type III functionally integrated.** A supporting organization operated in connection with, and functionally integrated with, its supported organization(s) (see instructions) **You must complete Part IV, Sections A, D, and E.**
  - d  **Type III non-functionally integrated.** A supporting organization operated in connection with its supported organization(s) that is not functionally integrated The organization generally must satisfy a distribution requirement and an attentiveness requirement (see instructions) **You must complete Part IV, Sections A and D, and Part V.**
  - e  Check this box if the organization received a written determination from the IRS that it is a Type I, Type II, Type III functionally integrated, or Type III non-functionally integrated supporting organization
  - f Enter the number of supported organizations: \_\_\_\_\_

09

g Provide the following information about the supported organization(s)

(i) Name of supported organization	(ii) EIN	(iii) Type of organization (described on lines 1-10 above (see instructions))	(iv) Is the organization listed in your governing document?		(v) Amount of monetary support (see instructions)	(vi) Amount of other support (see instructions)
			Yes	No		
(A)						
(B)						
(C)						
(D)						
(E)						
<b>Total</b>						

Part II Support Schedule for Organizations Described in Sections 170(b)(1)(A)(iv) and 170(b)(1)(A)(vi)
(Complete only if you checked the box on line 5, 7, or 8 of Part I or if the organization failed to qualify under Part III. If the organization fails to qualify under the tests listed below, please complete Part III.)

Section A Public Support

Table with 6 columns: (a) 2014, (b) 2015, (c) 2016, (d) 2017, (e) 2018, (f) Total. Rows include: 1 Gifts, grants, contributions, and membership fees received; 2 Tax revenues levied for the organization's benefit; 3 The value of services or facilities furnished by a governmental unit; 4 Total. Add lines 1 through 3; 5 The portion of total contributions by each person (other than a governmental unit or publicly supported organization) included on line 1 that exceeds 2% of the amount shown on line 11, column (f); 6 Public support. Subtract line 5 from line 4.

Section B Total Support

Table with 6 columns: (a) 2014, (b) 2015, (c) 2016, (d) 2017, (e) 2018, (f) Total. Rows include: 7 Amounts from line 4; 8 Gross income from interest, dividends, payments received on securities loans, rents, royalties and income from similar sources; 9 Net income from unrelated business activities, whether or not the business is regularly carried on; 10 Other income Do not include gain or loss from the sale of capital assets (Explain in Part VI); 11 Total support. Add lines 7 through 10.

12 Gross receipts from related activities, etc (see instructions) 12
13 First five years. If the Form 990 is for the organization's first, second, third, fourth, or fifth tax year as a section 501(c)(3) organization, check this box and stop here

Section C. Computation of Public Support Percentage

14 Public support percentage for 2018 (line 6, column (f) divided by line 11, column (f)). 14 %
15 Public support percentage from 2017 Schedule A, Part II, line 14 15 %
16a 33 1/3% support test - 2018. If the organization did not check the box on line 13, and line 14 is 33 1/3% or more, check this box and stop here. The organization qualifies as a publicly supported organization
b 33 1/3% support test - 2017. If the organization did not check a box on line 13 or 16a, and line 15 is 33 1/3% or more, check this box and stop here. The organization qualifies as a publicly supported organization
17a 10%-facts-and-circumstances test - 2018. If the organization did not check a box on line 13, 16a, or 16b, and line 14 is 10% or more, and if the organization meets the "facts-and-circumstances" test, check this box and stop here. Explain in Part VI how the organization meets the "facts-and-circumstances" test. The organization qualifies as a publicly supported organization
b 10%-facts-and-circumstances test - 2017. If the organization did not check a box on line 13, 16a, 16b, or 17a, and line 15 is 10% or more, and if the organization meets the "facts-and-circumstances" test, check this box and stop here. Explain in Part VI how the organization meets the "facts-and-circumstances" test. The organization qualifies as a publicly supported organization
18 Private foundation. If the organization did not check a box on line 13, 16a, 16b, 17a, or 17b, check this box and see instructions

**Part III Support Schedule for Organizations Described in Section 509(a)(2)**

(Complete only if you checked the box on line 10 of Part I or if the organization failed to qualify under Part II. If the organization fails to qualify under the tests listed below, please complete Part II.)

**Section A. Public Support**

Calendar year (or fiscal year beginning in) ▶	(a) 2014	(b) 2015	(c) 2016	(d) 2017	(e) 2018	(f) Total
<b>1</b> Gifts, grants, contributions, and membership fees received (Do not include any "unusual grants")	12,901	39,964	16,806	17,385		87,056
<b>2</b> Gross receipts from admissions, merchandise sold or services performed, or facilities furnished in any activity that is related to the organization's tax-exempt purpose . . . . .	100					100
<b>3</b> Gross receipts from activities that are not an unrelated trade or business under section 513 . . . . .	9,830	7,878	15,485	5,614		38,807
<b>4</b> Tax revenues levied for the organization's benefit and either paid to or expended on its behalf . . . . .						
<b>5</b> The value of services or facilities furnished by a governmental unit to the organization without charge . . . . .						
<b>6</b> Total. Add lines 1 through 5 . . . . .	22,831	47,842	32,291	22,999		125,963
<b>7a</b> Amounts included on lines 1, 2, and 3 received from disqualified persons . . . . .						
<b>b</b> Amounts included on lines 2 and 3 received from other than disqualified persons that exceed the greater of \$5,000 or 1% of the amount on line 13 for the year . . . . .						
<b>c</b> Add lines 7a and 7b . . . . .						
<b>8</b> Public support. (Subtract line 7c from line 6) . . . . .						125,963

**Section B. Total Support**

Calendar year (or fiscal year beginning in) ▶	(a) 2014	(b) 2015	(c) 2016	(d) 2017	(e) 2018	(f) Total
<b>9</b> Amounts from line 6 . . . . .	22,831	47,842	32,291	22,999		125,963
<b>10a</b> Gross income from interest, dividends, payments received on securities loans, rents, royalties, and income from similar sources . . . . .						
<b>b</b> Unrelated business taxable income (less section 511 taxes) from businesses acquired after June 30, 1975 . . . . .						
<b>c</b> Add lines 10a and 10b . . . . .						
<b>11</b> Net income from unrelated business activities not included in line 10b, whether or not the business is regularly carried on . . . . .						
<b>12</b> Other income. Do not include gain or loss from the sale of capital assets (Explain in Part VI) . . . . .				4,350		4,350
<b>13</b> Total support. (Add lines 9, 10c, 11, and 12) . . . . .	22,831	47,842	32,291	27,349		130,313

**14** First five years. If the Form 990 is for the organization's first, second, third, fourth, or fifth tax year as a section 501(c)(3) organization, check this box and stop here. . . . .

**Section C. Computation of Public Support Percentage**

<b>15</b> Public support percentage for 2018 (line 8, column (f), divided by line 13, column (f)) . . . . .	15	96.66	%
<b>16</b> Public support percentage from 2017 Schedule A, Part III, line 15 . . . . .	16	0.00	%

**Section D. Computation of Investment Income Percentage**

<b>17</b> Investment income percentage for 2018 (line 10c, column (f), divided by line 13, column (f)) . . . . .	17	0.00	%
<b>18</b> Investment income percentage from 2017 Schedule A, Part III, line 17 . . . . .	18	0.00	%

**19a** 33 1/3% support tests - 2018. If the organization did not check the box on line 14, and line 15 is more than 33 1/3%, and line 17 is not more than 33 1/3%, check this box and stop here. The organization qualifies as a publicly supported organization. . . . .

**b** 33 1/3% support tests - 2017. If the organization did not check a box on line 14 or line 19a, and line 16 is more than 33 1/3%, and line 18 is not more than 33 1/3%, check this box and stop here. The organization qualifies as a publicly supported organization. . . . .

**20** Private foundation. If the organization did not check a box on line 14, 19a, or 19b, check this box and see instructions. . . . .

**Part IV Supporting Organizations**

(Complete only if you checked a box in line 12 on Part I. If you checked 12a of Part I, complete Sections A and B. If you checked 12b of Part I, complete Sections A and C. If you checked 12c of Part I, complete Sections A, D, and E. If you checked 12d of Part I, complete Sections A and D, and complete Part V.)

**Section A. All Supporting Organizations**

	Yes	No
<b>1</b> Are all of the organization's supported organizations listed by name in the organization's governing documents? <i>If "No," describe in Part VI how the supported organizations are designated. If designated by class or purpose, describe the designation. If historic and continuing relationship, explain.</i>		
<b>2</b> Did the organization have any supported organization that does not have an IRS determination of status under section 509(a)(1) or (2)? <i>If "Yes," explain in Part VI how the organization determined that the supported organization was described in section 509(a)(1) or (2).</i>		
<b>3a</b> Did the organization have a supported organization described in section 501(c)(4), (5), or (6)? <i>If "Yes," answer (b) and (c) below.</i>		
<b>b</b> Did the organization confirm that each supported organization qualified under section 501(c)(4), (5), or (6) and satisfied the public support tests under section 509(a)(2)? <i>If "Yes," describe in Part VI when and how the organization made the determination.</i>		
<b>c</b> Did the organization ensure that all support to such organizations was used exclusively for section 170(c)(2)(B) purposes? <i>If "Yes," explain in Part VI what controls the organization put in place to ensure such use.</i>		
<b>4a</b> Was any supported organization not organized in the United States ("foreign supported organization")? <i>If "Yes," and if you checked 12a or 12b in Part I, answer (b) and (c) below.</i>		
<b>b</b> Did the organization have ultimate control and discretion in deciding whether to make grants to the foreign supported organization? <i>If "Yes," describe in Part VI how the organization had such control and discretion despite being controlled or supervised by or in connection with its supported organizations.</i>		
<b>c</b> Did the organization support any foreign supported organization that does not have an IRS determination under sections 501(c)(3) and 509(a)(1) or (2)? <i>If "Yes," explain in Part VI what controls the organization used to ensure that all support to the foreign supported organization was used exclusively for section 170(c)(2)(B) purposes.</i>		
<b>5a</b> Did the organization add, substitute, or remove any supported organizations during the tax year? <i>If "Yes," answer (b) and (c) below (if applicable). Also, provide detail in Part VI, including (i) the names and EIN numbers of the supported organizations added, substituted, or removed; (ii) the reasons for each such action; (iii) the authority under the organization's organizing document authorizing such action; and (iv) how the action was accomplished (such as by amendment to the organizing document).</i>		
<b>b</b> <b>Type I or Type II only.</b> Was any added or substituted supported organization part of a class already designated in the organization's organizing document?		
<b>c</b> <b>Substitutions only.</b> Was the substitution the result of an event beyond the organization's control?		
<b>6</b> Did the organization provide support (whether in the form of grants or the provision of services or facilities) to anyone other than (i) its supported organizations, (ii) individuals that are part of the charitable class benefited by one or more of its supported organizations, or (iii) other supporting organizations that also support or benefit one or more of the filing organization's supported organizations? <i>If "Yes," provide detail in Part VI.</i>		
<b>7</b> Did the organization provide a grant, loan, compensation, or other similar payment to a substantial contributor (as defined in section 4958(c)(3)(C)), a family member of a substantial contributor, or a 35% controlled entity with regard to a substantial contributor? <i>If "Yes," complete Part I of Schedule L (Form 990 or 990-EZ).</i>		
<b>8</b> Did the organization make a loan to a disqualified person (as defined in section 4958) not described in line 7? <i>If "Yes," complete Part I of Schedule L (Form 990 or 990-EZ).</i>		
<b>9a</b> Was the organization controlled directly or indirectly at any time during the tax year by one or more disqualified persons as defined in section 4946 (other than foundation managers and organizations described in section 509(a)(1) or (2))? <i>If "Yes," provide detail in Part VI.</i>		
<b>b</b> Did one or more disqualified persons (as defined in line 9a) hold a controlling interest in any entity in which the supporting organization had an interest? <i>If "Yes," provide detail in Part VI.</i>		
<b>c</b> Did a disqualified person (as defined in line 9a) have an ownership interest in, or derive any personal benefit from, assets in which the supporting organization also had an interest? <i>If "Yes," provide detail in Part VI.</i>		
<b>10a</b> Was the organization subject to the excess business holdings rules of section 4943 because of section 4943(f) (regarding certain Type II supporting organizations, and all Type III non-functionally integrated supporting organizations)? <i>If "Yes," answer 10b below.</i>		
<b>b</b> Did the organization have any excess business holdings in the tax year? <i>(Use Schedule C, Form 4720, to determine whether the organization had excess business holdings.)</i>		

**Part IV Supporting Organizations (continued)**

	Yes	No
<b>11</b> Has the organization accepted a gift or contribution from any of the following persons?		
<b>a</b> A person who directly or indirectly controls, either alone or together with persons described in (b) and (c) below, the governing body of a supported organization?		
<b>b</b> A family member of a person described in (a) above?		
<b>c</b> A 35% controlled entity of a person described in (a) or (b) above? If "Yes" to a, b, or c, provide detail in Part VI.		

**Section B. Type I Supporting Organizations**

	Yes	No
<b>1</b> Did the directors, trustees, or membership of one or more supported organizations have the power to regularly appoint or elect at least a majority of the organization's directors or trustees at all times during the tax year? If "No," describe in Part VI how the supported organization(s) effectively operated, supervised, or controlled the organization's activities. If the organization had more than one supported organization, describe how the powers to appoint and/or remove directors or trustees were allocated among the supported organizations and what conditions or restrictions, if any, applied to such powers during the tax year.		
<b>2</b> Did the organization operate for the benefit of any supported organization other than the supported organization(s) that operated, supervised, or controlled the supporting organization? If "Yes," explain in Part VI how providing such benefit carried out the purposes of the supported organization(s) that operated, supervised, or controlled the supporting organization.		

**Section C. Type II Supporting Organizations**

	Yes	No
<b>1</b> Were a majority of the organization's directors or trustees during the tax year also a majority of the directors or trustees of each of the organization's supported organization(s)? If "No," describe in Part VI how control or management of the supporting organization was vested in the same persons that controlled or managed the supported organization(s).		

**Section D. All Type III Supporting Organizations**

	Yes	No
<b>1</b> Did the organization provide to each of its supported organizations, by the last day of the fifth month of the organization's tax year, (i) a written notice describing the type and amount of support provided during the prior tax year, (ii) a copy of the Form 990 that was most recently filed as of the date of notification, and (iii) copies of the organization's governing documents in effect on the date of notification, to the extent not previously provided?		
<b>2</b> Were any of the organization's officers, directors, or trustees either (i) appointed or elected by the supported organization(s) or (ii) serving on the governing body of a supported organization? If "No," explain in Part VI how the organization maintained a close and continuous working relationship with the supported organization(s).		
<b>3</b> By reason of the relationship described in (2), did the organization's supported organizations have a significant voice in the organization's investment policies and in directing the use of the organization's income or assets at all times during the tax year? If "Yes," describe in Part VI the role the organization's supported organizations played in this regard.		

**Section E. Type III Functionally Integrated Supporting Organizations**

<b>1</b> Check the box next to the method that the organization used to satisfy the Integral Part Test during the year (see instructions).		
<b>a</b> <input type="checkbox"/> The organization satisfied the Activities Test. Complete line 2 below.		
<b>b</b> <input type="checkbox"/> The organization is the parent of each of its supported organizations. Complete line 3 below.		
<b>c</b> <input type="checkbox"/> The organization supported a governmental entity. Describe in Part VI how you supported a government entity (see instructions).		
<b>2</b> Activities Test. Answer (a) and (b) below.		
<b>a</b> Did substantially all of the organization's activities during the tax year directly further the exempt purposes of the supported organization(s) to which the organization was responsive? If "Yes," then in Part VI identify those supported organizations and explain how these activities directly furthered their exempt purposes, how the organization was responsive to those supported organizations, and how the organization determined that these activities constituted substantially all of its activities.		
<b>b</b> Did the activities described in (a) constitute activities that, but for the organization's involvement, one or more of the organization's supported organization(s) would have been engaged in? If "Yes," explain in Part VI the reasons for the organization's position that its supported organization(s) would have engaged in these activities but for the organization's involvement.		
<b>3</b> Parent of Supported Organizations. Answer (a) and (b) below.		
<b>a</b> Did the organization have the power to regularly appoint or elect a majority of the officers, directors, or trustees of each of the supported organizations? Provide details in Part VI.		
<b>b</b> Did the organization exercise a substantial degree of direction over the policies, programs, and activities of each of its supported organizations? If "Yes," describe in Part VI the role played by the organization in this regard.		

**Part V Type III Non-Functionally Integrated 509(a)(3) Supporting Organizations**

- 1  Check here if the organization satisfied the Integral Part Test as a qualifying trust on Nov. 20, 1970 (explain in Part VI). See instructions. All other Type III non-functionally integrated supporting organizations must complete Sections A through E.

Section A - Adjusted Net Income		(A) Prior Year	(B) Current Year (optional)
1	Net short-term capital gain	1	
2	Recoveries of prior-year distributions	2	
3	Other gross income (see instructions)	3	
4	Add lines 1 through 3.	4	
5	Depreciation and depletion	5	
6	Portion of operating expenses paid or incurred for production or collection of gross income or for management, conservation, or maintenance of property held for production of income (see instructions)	6	
7	Other expenses (see instructions)	7	
8	<b>Adjusted Net Income</b> (subtract lines 5, 6, and 7 from line 4)	8	
Section B - Minimum Asset Amount		(A) Prior Year	(B) Current Year (optional)
1	Aggregate fair market value of all non-exempt-use assets (see instructions for short tax year or assets held for part of year):		
a	Average monthly value of securities	1a	
b	Average monthly cash balances	1b	
c	Fair market value of other non-exempt-use assets	1c	
d	<b>Total</b> (add lines 1a, 1b, and 1c)	1d	
e	<b>Discount</b> claimed for blockage or other factors (explain in detail in Part VI):		
2	Acquisition indebtedness applicable to non-exempt-use assets	2	
3	Subtract line 2 from line 1d.	3	
4	Cash deemed held for exempt use. Enter 1-1/2% of line 3 (for greater amount, see instructions).	4	
5	Net value of non-exempt-use assets (subtract line 4 from line 3)	5	
6	Multiply line 5 by .035.	6	
7	Recoveries of prior-year distributions	7	
8	<b>Minimum Asset Amount</b> (add line 7 to line 6)	8	
Section C - Distributable Amount			Current Year
1	Adjusted net income for prior year (from Section A, line 8, Column A)	1	
2	Enter 85% of line 1.	2	
3	Minimum asset amount for prior year (from Section B, line 8, Column A)	3	
4	Enter greater of line 2 or line 3.	4	
5	Income tax imposed in prior year	5	
6	<b>Distributable Amount.</b> Subtract line 5 from line 4, unless subject to emergency temporary reduction (see instructions).	6	
7	<input type="checkbox"/> Check here if the current year is the organization's first as a non-functionally integrated Type III supporting organization (see instructions).		

**Part V** Type III Non-Functionally Integrated 509(a)(3) Supporting Organizations (continued)

Section D - Distributions	Current Year
1 Amounts paid to supported organizations to accomplish exempt purposes	
2 Amounts paid to perform activity that directly furthers exempt purposes of supported organizations, in excess of income from activity	
3 Administrative expenses paid to accomplish exempt purposes of supported organizations	
4 Amounts paid to acquire exempt-use assets	
5 Qualified set-aside amounts (prior IRS approval required)	
6 Other distributions (describe in Part VI). See instructions.	
7 <b>Total annual distributions.</b> Add lines 1 through 6.	
8 Distributions to attentive supported organizations to which the organization is responsive (provide details in Part VI). See instructions.	
9 Distributable amount for 2018 from Section C, line 6	
10 Line 8 amount divided by Line 9 amount	

Section E - Distribution Allocations (see instructions)	(i) Excess Distributions	(ii) Underdistributions Pre-2018	(iii) Distributable Amount for 2018
1 Distributable amount for 2018 from Section C, line 6			
2 Underdistributions, if any, for years prior to 2018 (reasonable cause required - explain in Part VI). See instructions.			
3 Excess distributions carryover, if any, to 2018			
a From 2013			
b From 2014			
c From 2015			
d From 2016			
e From 2017			
f <b>Total</b> of lines 3a through e			
g Applied to underdistributions of prior years			
h Applied to 2018 distributable amount			
i Carryover from 2013 not applied (see instructions)			
j Remainder. Subtract lines 3g, 3h, and 3i from 3f.			
4 Distributions for 2018 from Section D, line 7: \$			
a Applied to underdistributions of prior years			
b Applied to 2018 distributable amount			
c Remainder. Subtract lines 4a and 4b from 4.			
5 Remaining underdistributions for years prior to 2018, if any. Subtract lines 3g and 4a from line 2. For result greater than zero, explain in Part VI. See instructions.			
6 Remaining underdistributions for 2018. Subtract lines 3h and 4b from line 1. For result greater than zero, explain in Part VI. See instructions.			
7 <b>Excess distributions carryover to 2019.</b> Add lines 3j and 4c.			
8 Breakdown of line 7:			
a Excess from 2014			
b Excess from 2015			
c Excess from 2016			
d Excess from 2017			
e Excess from 2018			



**SCHEDULE C**  
**(Form 990 or 990-EZ)**

**Political Campaign and Lobbying Activities**

OMB No 1545-0047

**2018**

Department of the Treasury  
Internal Revenue Service

For Organizations Exempt From Income Tax Under section 501(c) and section 527

▶ **Complete if the organization is described below.** ▶ **Attach to Form 990 or Form 990-EZ.**  
▶ **Go to [www.irs.gov/Form990](http://www.irs.gov/Form990) for instructions and the latest information.**

**Open to Public Inspection**

If the organization answered "Yes," on Form 990, Part IV, line 3, or Form 990-EZ, Part V, line 46 (Political Campaign Activities), then

- Section 501(c)(3) organizations: Complete Parts I-A and B. Do not complete Part I-C.
- Section 501(c) (other than section 501(c)(3)) organizations: Complete Parts I-A and C below. Do not complete Part I-B.
- Section 527 organizations: Complete Part I-A only.

If the organization answered "Yes," on Form 990, Part IV, line 4, or Form 990-EZ, Part VI, line 47 (Lobbying Activities), then

- Section 501(c)(3) organizations that have filed Form 5768 (election under section 501(h)): Complete Part II-A. Do not complete Part II-B.
- Section 501(c)(3) organizations that have NOT filed Form 5768 (election under section 501(h)): Complete Part II-B. Do not complete Part II-A.

If the organization answered "Yes," on Form 990, Part IV, line 5 (Proxy Tax) (see separate instructions) or Form 990-EZ, Part V, line 35c (Proxy Tax) (see separate instructions), then

- Section 501(c)(4), (5), or (6) organizations: Complete Part III.

Name of organization <b>THE SHASHAMANE FOUNDATION INC</b>	Employer identification number <b>52-2158855</b>
--	---

**Part I-A Complete if the organization is exempt under section 501(c) or is a section 527 organization.**

- 1 Provide a description of the organization's direct and indirect political campaign activities in Part IV (see instructions for definition of "political campaign activities")
- 2 Political campaign activity expenditures (see instructions) ▶ \$ \_\_\_\_\_
- 3 Volunteer hours for political campaign activities (see instructions) . . . . .

**Part I-B Complete if the organization is exempt under section 501(c)(3).**

- 1 Enter the amount of any excise tax incurred by the organization under section 4955 . . . . . ▶ \$ \_\_\_\_\_
- 2 Enter the amount of any excise tax incurred by organization managers under section 4955 . . . . . ▶ \$ \_\_\_\_\_
- 3 If the organization incurred a section 4955 tax, did it file Form 4720 for this year? . . . . .  Yes  No
- 4a Was a correction made? . . . . .  Yes  No
- b If "Yes," describe in Part IV

**Part I-C Complete if the organization is exempt under section 501(c), except section 501(c)(3).**

- 1 Enter the amount directly expended by the filing organization for section 527 exempt function activities . . . . . ▶ \$ \_\_\_\_\_
- 2 Enter the amount of the filing organization's funds contributed to other organizations for section 527 exempt function activities . . . . . ▶ \$ \_\_\_\_\_
- 3 Total exempt function expenditures. Add lines 1 and 2. Enter here and on Form 1120-POL, line 17b . . . . . ▶ \$ \_\_\_\_\_
- 4 Did the filing organization file Form 1120-POL for this year? . . . . .  Yes  No
- 5 Enter the names, addresses and employer identification number (EIN) of all section 527 political organizations to which the filing organization made payments. For each organization listed, enter the amount paid from the filing organization's funds. Also enter the amount of political contributions received that were promptly and directly delivered to a separate political organization, such as a separate segregated fund or a political action committee (PAC). If additional space is needed, provide information in Part IV

(a) Name	(b) Address	(c) EIN	(d) Amount paid from filing organization's funds. If none, enter -0-	(e) Amount of political contributions received and promptly and directly delivered to a separate political organization. If none, enter -0-
(1)	-----			
(2)	-----			
(3)	-----			
(4)	-----			
(5)	-----			
(6)	-----			

**Part II-A** Complete if the organization is exempt under section 501(c)(3) and filed Form 5768 (election under section 501(h)).

- A Check  if the filing organization belongs to an affiliated group (and list in Part IV each affiliated group member's name, address, EIN, expenses, and share of excess lobbying expenditures)
- B Check  if the filing organization checked box A and "limited control" provisions apply.

<b>Limits on Lobbying Expenditures</b> (The term "expenditures" means amounts paid or incurred.)		(a) Filing organization's totals	(b) Affiliated group totals												
<b>1a</b>	Total lobbying expenditures to influence public opinion (grass roots lobbying) . . . . .														
<b>b</b>	Total lobbying expenditures to influence a legislative body (direct lobbying) . . . . .														
<b>c</b>	Total lobbying expenditures (add lines 1a and 1b) . . . . .														
<b>d</b>	Other exempt purpose expenditures . . . . .														
<b>e</b>	Total exempt purpose expenditures (add lines 1c and 1d) . . . . .														
<b>f</b>	Lobbying nontaxable amount. Enter the amount from the following table in both columns.														
<table border="1" style="width: 100%; border-collapse: collapse;"> <thead> <tr> <th style="width: 35%;">If the amount on line 1e, column (a) or (b) is:</th> <th>The lobbying nontaxable amount is:</th> </tr> </thead> <tbody> <tr> <td>Not over \$500,000</td> <td>20% of the amount on line 1e</td> </tr> <tr> <td>Over \$500,000 but not over \$1,000,000</td> <td>\$100,000 plus 15% of the excess over \$500,000</td> </tr> <tr> <td>Over \$1,000,000 but not over \$1,500,000</td> <td>\$175,000 plus 10% of the excess over \$1,000,000</td> </tr> <tr> <td>Over \$1,500,000 but not over \$17,000,000</td> <td>\$225,000 plus 5% of the excess over \$1,500,000</td> </tr> <tr> <td>Over \$17,000,000</td> <td>\$1,000,000</td> </tr> </tbody> </table>		If the amount on line 1e, column (a) or (b) is:	The lobbying nontaxable amount is:	Not over \$500,000	20% of the amount on line 1e	Over \$500,000 but not over \$1,000,000	\$100,000 plus 15% of the excess over \$500,000	Over \$1,000,000 but not over \$1,500,000	\$175,000 plus 10% of the excess over \$1,000,000	Over \$1,500,000 but not over \$17,000,000	\$225,000 plus 5% of the excess over \$1,500,000	Over \$17,000,000	\$1,000,000		
If the amount on line 1e, column (a) or (b) is:	The lobbying nontaxable amount is:														
Not over \$500,000	20% of the amount on line 1e														
Over \$500,000 but not over \$1,000,000	\$100,000 plus 15% of the excess over \$500,000														
Over \$1,000,000 but not over \$1,500,000	\$175,000 plus 10% of the excess over \$1,000,000														
Over \$1,500,000 but not over \$17,000,000	\$225,000 plus 5% of the excess over \$1,500,000														
Over \$17,000,000	\$1,000,000														
<b>g</b>	Grassroots nontaxable amount (enter 25% of line 1f) . . . . .														
<b>h</b>	Subtract line 1g from line 1a. If zero or less, enter -0- . . . . .														
<b>i</b>	Subtract line 1f from line 1c. If zero or less, enter -0- . . . . .														
<b>j</b>	If there is an amount other than zero on either line 1h or line 1i, did the organization file Form 4720 reporting section 4911 tax for this year? . . . . .		<input type="checkbox"/> Yes <input type="checkbox"/> No												

**4-Year Averaging Period Under section 501(h)**  
 (Some organizations that made a section 501(h) election do not have to complete all of the five columns below.  
 See the separate instructions for lines 2a through 2f.)

<b>Lobbying Expenditures During 4-Year Averaging Period</b>					
Calendar year (or fiscal year beginning in)	(a) 2015	(b) 2016	(c) 2017	(d) 2018	(e) Total
<b>2a</b> Lobbying nontaxable amount					
<b>b</b> Lobbying ceiling amount (150% of line 2a, column (e))					
<b>c</b> Total lobbying expenditures					
<b>d</b> Grassroots nontaxable amount					
<b>e</b> Grassroots ceiling amount (150% of line 2d, column (e))					
<b>f</b> Grassroots lobbying expenditures					

Part II-B Complete if the organization is exempt under section 501(c)(3) and has NOT filed Form 5768 (election under section 501(h)).

For each "Yes," response on lines 1a through 1i below, provide in Part IV a detailed description of the lobbying activity.

Table with 3 main columns: (a) Yes, (a) No, (b) Amount. Rows include: 1. During the year, did the filing organization attempt to influence foreign, national, state or local legislation...; a. Volunteers?; b. Paid staff or management...; c. Media advertisements?; d. Mailings to members, legislators, or the public?; e. Publications, or published or broadcast statements?; f. Grants to other organizations for lobbying purposes?; g. Direct contact with legislators, their staffs, government officials, or a legislative body?; h. Rallies, demonstrations, seminars, conventions, speeches, lectures, or any similar means?; i. Other activities?; j. Total Add lines 1c through 1i; 2a. Did the activities in line 1 cause the organization to be not described in section 501(c)(3)?; b. If "Yes," enter the amount of any tax incurred under section 4912; c. If "Yes," enter the amount of any tax incurred by organization managers under section 4912; d. If the filing organization incurred a section 4912 tax, did it file Form 4720 for this year?

Part III-A Complete if the organization is exempt under section 501(c)(4), section 501(c)(5), or section 501(c)(6).

Table with 3 columns: Question, Yes, No. Rows include: 1. Were substantially all (90% or more) dues received nondeductible by members?; 2. Did the organization make only in-house lobbying expenditures of \$2,000 or less?; 3. Did the organization agree to carry over lobbying and political campaign activity expenditures from the prior year?

Part III-B Complete if the organization is exempt under section 501(c)(4), section 501(c)(5), or section 501(c)(6) and if either (a) BOTH Part III-A, lines 1 and 2, are answered "No," OR (b) Part III-A, line 3, is answered "Yes."

Table with 3 columns: Question, Yes, No. Rows include: 1. Dues, assessments and similar amounts from members; 2. Section 162(e) nondeductible lobbying and political expenditures (do not include amounts of political expenses for which the section 527(f) tax was paid); a. Current year; b. Carryover from last year; c. Total; 3. Aggregate amount reported in section 6033(e)(1)(A) notices of nondeductible section 162(e) dues; 4. If notices were sent and the amount on line 2c exceeds the amount on line 3, what portion of the excess does the organization agree to carryover to the reasonable estimate of nondeductible lobbying and political expenditure next year?; 5. Taxable amount of lobbying and political expenditures (see instructions)

Part IV Supplemental Information

Provide the descriptions required for Part I-A, line 1; Part I-B, line 4; Part I-C, line 5; Part II-A (affiliated group list); Part II-A, lines 1 and 2 (see instructions), and Part II-B, line 1. Also, complete this part for any additional information

Blank lines for providing supplemental information as required by the instructions.

**SCHEDULE E**  
**(Form 990 or 990-EZ)**

**Schools**

OMB No 1545-0047

**2018**

**Open to Public Inspection**

Department of the Treasury  
Internal Revenue Service

▶ Complete if the organization answered "Yes" on Form 990, Part IV, line 13, or Form 990-EZ, Part VI, line 48.

▶ Attach to Form 990 or Form 990-EZ.

▶ Go to [www.irs.gov/Form990](http://www.irs.gov/Form990) for the latest information.

Name of the organization

Employer identification number

**THE SHASHAMANE FOUNDATION INC**

**52-2158855**

**Part I**

- 1 Does the organization have a racially nondiscriminatory policy toward students by statement in its charter, bylaws, other governing instrument, or in a resolution of its governing body? . . . . .
- 2 Does the organization include a statement of its racially nondiscriminatory policy toward students in all its brochures, catalogues, and other written communications with the public dealing with student admissions, programs, and scholarships? . . . . .
- 3 Has the organization publicized its racially nondiscriminatory policy through newspaper or broadcast media during the period of solicitation for students, or during the registration period if it has no solicitation program, in a way that makes the policy known to all parts of the general community it serves? If "Yes," please describe. If "No," please explain. If you need more space, use Part II . . . . .  
\_\_\_\_\_  
\_\_\_\_\_  
\_\_\_\_\_
- 4 Does the organization maintain the following?
  - a Records indicating the racial composition of the student body, faculty, and administrative staff? . . . . .
  - b Records documenting that scholarships and other financial assistance are awarded on a racially nondiscriminatory basis? . . . . .
  - c Copies of all catalogues, brochures, announcements, and other written communications to the public dealing with student admissions, programs, and scholarships? . . . . .
  - d Copies of all material used by the organization or on its behalf to solicit contributions? . . . . .  
If you answered "No" to any of the above, please explain. If you need more space, use Part II  
\_\_\_\_\_  
\_\_\_\_\_
- 5 Does the organization discriminate by race in any way with respect to:
  - a Students' rights or privileges? . . . . .
  - b Admissions policies? . . . . .
  - c Employment of faculty or administrative staff? . . . . .
  - d Scholarships or other financial assistance? . . . . .
  - e Educational policies? . . . . .
  - f Use of facilities? . . . . .
  - g Athletic programs? . . . . .
  - h Other extracurricular activities? . . . . .  
If you answered "Yes" to any of the above, please explain. If you need more space, use Part II  
\_\_\_\_\_  
\_\_\_\_\_
- 6a Does the organization receive any financial aid or assistance from a governmental agency? . . . . .
- 6b Has the organization's right to such aid ever been revoked or suspended? . . . . .  
If you answered "Yes" on either line 6a or line 6b, explain on Part II.
- 7 Does the organization certify that it has complied with the applicable requirements of sections 4 01 through 4 05 of Rev. Proc. 75-50, 1975-2 C.B. 587, covering racial nondiscrimination? If "No," explain on Part II . . . . .

	YES	NO
1		
2		
3		
4a		
4b		
4c		
4d		
5a		
5b		
5c		
5d		
5e		
5f		
5g		
5h		
6a		
6b		
7		

**SCHEDULE G**  
**(Form 990 or 990-EZ)**

**Supplemental Information Regarding Fundraising or Gaming Activities**

OMB No 1545-0047

Complete if the organization answered "Yes" on Form 990, Part IV, line 17, 18, or 19, or if the organization entered more than \$15,000 on Form 990-EZ, line 6a.

**2018**

**Open to Public Inspection**

Department of the Treasury  
Internal Revenue Service

▶ Attach to Form 990 or Form 990-EZ.

▶ Go to [www.irs.gov/Form990](http://www.irs.gov/Form990) for instructions and the latest information.

Name of the organization

Employer identification number

**THE SHASHAMANE FOUNDATION INC**

**52-2158855**

**Part I Fundraising Activities.** Complete if the organization answered "Yes" on Form 990, Part IV, line 17.  
Form 990-EZ filers are not required to complete this part.

- 1** Indicate whether the organization raised funds through any of the following activities. Check all that apply.
- a  Mail solicitations
  - b  Internet and email solicitations
  - c  Phone solicitations
  - d  In-person solicitations
  - e  Solicitation of non-government grants
  - f  Solicitation of government grants
  - g  Special fundraising events
- 2a** Did the organization have a written or oral agreement with any individual (including officers, directors, trustees, or key employees listed in Form 990, Part VII) or entity in connection with professional fundraising services?  Yes  No
- b** If "Yes," list the 10 highest paid individuals or entities (fundraisers) pursuant to agreements under which the fundraiser is to be compensated at least \$5,000 by the organization

(i) Name and address of individual or entity (fundraiser)	(ii) Activity	(iii) Did fundraiser have custody or control of contributions?		(iv) Gross receipts from activity	(v) Amount paid to (or retained by) fundraiser listed in col (i)	(vi) Amount paid to (or retained by) organization
		Yes	No			
1						
2						
3						
4						
5						
6						
7						
8						
9						
10						
<b>Total</b> .....						

- 3** List all states in which the organization is registered or licensed to solicit contributions or has been notified it is exempt from registration or licensing

**Part II Fundraising Events.** Complete if the organization answered "Yes" on Form 990, Part IV, line 18, or reported more than \$15,000 of fundraising event contributions and gross income on Form 990-EZ, lines 1 and 6b. List events with gross receipts greater than \$5,000.

		(a) Event #1	(b) Event #2	(c) Other events	(d) Total events	
		(event type)	(event type)	(total number)	(add col (a) through col (c))	
Revenue	1	Gross receipts . . . . .				
	2	Less Contributions . . . . .				
	3	Gross income (line 1 minus line 2) . . . . .				
Direct Expenses	4	Cash prizes . . . . .				
	5	Noncash prizes . . . . .				
	6	Rent/facility costs . . . . .				
	7	Food and beverages . . . . .				
	8	Entertainment . . . . .				
	9	Other direct expenses . . . . .				
	10	Direct expense summary Add lines 4 through 9 in column (d) . . . . . ▶				
	11	Net income summary Subtract line 10 from line 3, column (d) . . . . . ▶				

**Part III Gaming.** Complete if the organization answered "Yes" on Form 990, Part IV, line 19, or reported more than \$15,000 on Form 990-EZ, line 6a.

		(a) Bingo	(b) Pull tabs/instant bingo/progressive bingo	(c) Other gaming	(d) Total gaming (add col (a) through col (c))
		1	Gross revenue . . . . .		
Direct Expenses	2	Cash prizes . . . . .			
	3	Noncash prizes . . . . .			
	4	Rent/facility costs . . . . .			
	5	Other direct expenses . . . . .			
	6	Volunteer labor . . . . .	<input type="checkbox"/> Yes _____ % <input type="checkbox"/> No	<input type="checkbox"/> Yes _____ % <input type="checkbox"/> No	<input type="checkbox"/> Yes _____ % <input type="checkbox"/> No
7	Direct expense summary Add lines 2 through 5 in column (d) . . . . . ▶				
8	Net gaming income summary Subtract line 7 from line 1, column (d) . . . . . ▶				

9 Enter the state(s) in which the organization conducts gaming activities: \_\_\_\_\_

a Is the organization licensed to conduct gaming activities in each of these states? . . . . .  Yes  No

b If "No," explain: \_\_\_\_\_

10a Were any of the organization's gaming licenses revoked, suspended or terminated during the tax year? . . . . .  Yes  No

b If "Yes," explain: \_\_\_\_\_

**SCHEDULE O**  
**(Form 990 or 990-EZ)**

Department of the Treasury  
Internal Revenue Service  
Name of the organization

**Supplemental Information to Form 990 or 990-EZ**

Complete to provide information for responses to specific questions on  
Form 990 or 990-EZ or to provide any additional information.

▶ Attach to Form 990 or 990-EZ.  
▶ Go to [www.irs.gov/Form990](http://www.irs.gov/Form990) for the latest information.

OMB No 1545-0047

**2018**

**Open to Public  
Inspection**

**THE SHASHAMANE FOUNDATION INC**

Employer identification number  
**52-2158855**

**01. Member election for additional members (Part VI, line 7a)**

THE TREASURER COMPILES THE ANNUAL INCOME STATEMENT DATA, SUBMITS IT TO THE SECRETARY AND  
PRESIDENT FOR REVIEW. IT IS THEN SUBMITTED TO THE TAX PREPARER WHO PREPARES THE FORM 990  
AND RETURN IT TO THE SECRETARY AND PRESIDENT FOR REVIEW, SIGNATURE AND SUBMITTAL TO THE  
IRS

**02. "Other" or change in accounting method (Part XII, line 1)**

GOVERN DOCUMENTS ETC, AVAILABLE TO THE PUBLIC (PART VI, LINE 19)  
THE FOUNDATION MAKES ITS GOVERNING DOCUMENTS AND FINANCIAL STATEMENTS AVAILABLE TO THE  
PUBLIC. THESE DOCUMENTS AND STATEMENTS ARE PUBLICIZED IN VARIOUS WAYS, INCLUDING THROUGH  
POSTING ON THE FOUNDATION'S WEBSITE.

**03. List of other fees for services expenses (Part IX, line 11g)**

THE FOUNDATION MAKES ITS GOVERNING DOCUMENTS AND FINANCIAL STATEMENTS AVAILABLE TO THE  
PUBLIC AND ADVERTISES THIS IN VARIOUS WAYS, INCLUDING BY WAY OF A POST TO THIS EFFECT ON  
OUR WEBSITE.

**04. Part VII, response or note to any other line in Part VII**

THE TREASURER COMPILES THE ANNUAL INCOME STATEMENT DATA, SUBMITS IT TO THE SECRETARY AND  
PRESIDENT FOR REVIEW. IT IS THEN SUBMITTED TO THE TAX PREPARER, WHO COMPLETES THE FORM 990  
AND RETURN IT TO THE SECRETARY AND PRESIDENT FOR REVIEW, SIGNATURE AND SUBMISSION TO THE  
INTERNAL REVENUE SERVICE.

**05. Part VIII, response or note to any line in Part VIII**

Ryland G. Mcpherson-Secretary....25 Hours per week

Name of the organization

Employer identification number

**THE SHASHAMANE FOUNDATION INC**

**52-2158855**

Zanabe Henry-Treasurer...10 hours per week

Valerie Phillpotts-Director....5 hours per week