

2017

Open to Public Inspection for  
501(c)(3) Organizations OnlyForm **990-T****Exempt Organization Business Income Tax Return**  
**(and proxy tax under section 6033(e))**For calendar year 2017 or other tax year beginning \_\_\_\_\_, and ending \_\_\_\_\_  
Go to [www.irs.gov/Form990T](http://www.irs.gov/Form990T) for instructions and the latest information.

Do not enter SSN numbers on this form as it may be made public if your organization is a 501(c)(3).

Department of the Treasury  
Internal Revenue Service

- A** ☐ Check box if address changed
- B** Exempt under section
- ☒ 501 (C) **103**
- ☐ 408(e) ☐ 220(e)
- ☐ 408A ☐ 530(a)
- ☐ 529(a)

Print  
or  
TypeName of organization ( ☐ Check box if name changed and see instructions )

Cyrus Tang Foundation

Number, street, and room or suite no. If a P.O. box, see instructions

8960 Spanish Ridge Avenue

City or town

State

ZIP code

Las Vegas

NV

89148

Foreign country name

Foreign province/state/county Foreign postal code

**D** Employer identification number  
(Employees' trust, see instructions)

88-0361180

**E** Unrelated business activity codes  
(See instructions)**C** Book value of all assets at  
end of year 524,215,659**F** Group exemption number (See instructions) ▶**G** Check organization type ☐ 501(c) corporation ☒ 501(c) trust ☐ 401(a) trust ☐ Other trust**H** Describe the organization's primary unrelated business activity ▶**I** During the tax year, was the corporation a subsidiary in an affiliated group or a parent-subsidiary controlled group? ☐ Yes ☒ No  
If "Yes," enter the name and identifying number of the parent corporation.▶**J** The books are in care of ▶ BENLOR RIVERA

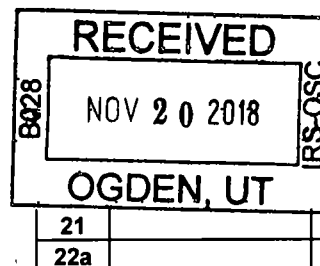
Telephone number ▶ 702-734-3700

**Part I Unrelated Trade or Business Income**

	(A) Income	(B) Expenses	(C) Net
<b>1 a</b> Gross receipts or sales			
<b>b</b> Less returns and allowances			
<b>c</b> Balance ▶	<b>1c</b> 0		
<b>2</b> Cost of goods sold (Schedule A, line 7)	<b>2</b>		
<b>3</b> Gross profit Subtract line 2 from line 1c	<b>3</b> 0		0
<b>4 a</b> Capital gain net income (attach Schedule D)	<b>4a</b>		
<b>b</b> Net gain (loss) (Form 4797, Part II, line 17) (attach Form 4797)	<b>4b</b>		
<b>c</b> Capital loss deduction for trusts	<b>4c</b>		
<b>5</b> Income (loss) from partnerships and S corporations (attach statement)	<b>5</b> -392,238		-392,238
<b>6</b> Rent income (Schedule C)	<b>6</b>		
<b>7</b> Unrelated debt-financed income (Schedule E)	<b>7</b>		
<b>8</b> Interest, annuities, royalties, and rents from controlled organizations (Schedule F)	<b>8</b>		
<b>9</b> Investment income of a section 501(c)(7), (9), or (17) organization (Schedule G)	<b>9</b>		
<b>10</b> Exploited exempt activity income (Schedule I)	<b>10</b>		
<b>11</b> Advertising income (Schedule J)	<b>11</b>		
<b>12</b> Other income (See instructions, attach schedule)	<b>12</b>		
<b>13</b> Total. Combine lines 3 through 12	<b>13</b> -392,238	0	-392,238

**Part II Deductions Not Taken Elsewhere** (See instructions for limitations on deductions) (Except for contributions, deductions must be directly connected with the unrelated business income)

<b>14</b> Compensation of officers, directors, and trustees (Schedule K)	<b>14</b>	
<b>15</b> Salaries and wages	<b>15</b>	
<b>16</b> Repairs and maintenance	<b>16</b>	
<b>17</b> Bad debts	<b>17</b>	
<b>18</b> Interest (attach schedule)	<b>18</b>	
<b>19</b> Taxes and licenses	<b>19</b>	
<b>20</b> Charitable contributions (See instructions for limitation rules)	<b>20</b>	
<b>21</b> Depreciation (attach Form 4562)	<b>21</b>	
<b>22</b> Less depreciation claimed on Schedule A and elsewhere on return	<b>22a</b>	
<b>23</b> Depletion	<b>23</b>	
<b>24</b> Contributions to deferred compensation plans	<b>24</b>	
<b>25</b> Employee benefit programs	<b>25</b>	
<b>26</b> Excess exempt expenses (Schedule I)	<b>26</b>	
<b>27</b> Excess readership costs (Schedule J)	<b>27</b>	
<b>28</b> Other deductions (attach schedule)	<b>28</b>	
<b>29</b> Total deductions. Add lines 14 through 28	<b>29</b> 0	
<b>30</b> Unrelated business taxable income before net operating loss deduction Subtract line 29 from line 13	<b>30</b> -392,238	
<b>31</b> Net operating loss deduction (limited to the amount on line 30)	<b>31</b>	
<b>32</b> Unrelated business taxable income before specific deduction Subtract line 31 from line 30	<b>32</b> -392,238	
<b>33</b> Specific deduction (Generally \$1,000, but see line 33 instructions for exceptions)	<b>33</b>	
<b>34</b> Unrelated business taxable income. Subtract line 33 from line 32. If line 33 is greater than line 32, enter the smaller of zero or line 32	<b>34</b> -392,238	



NOV 15 2018

SCANNED FEB 13 2019

**Part III Tax Computation**

<b>35. Organizations Taxable as Corporations.</b> See instructions for tax computation. Controlled group members (sections 1561 and 1563) check here <input type="checkbox"/> <b>See instructions and:</b>		
<b>a</b> Enter your share of the \$50,000, \$25,000, and \$9,925,000 taxable income brackets (in that order): (1) \$ <input type="text"/> (2) \$ <input type="text"/> (3) \$ <input type="text"/>		
<b>b</b> Enter organization's share of (1) Additional 5% tax (not more than \$11,750) <input type="text"/> \$ <input type="text"/> (2) Additional 3% tax (not more than \$100,000) <input type="text"/> \$ <input type="text"/>		
<b>c</b> Income tax on the amount on line 34 <input type="text"/>	<b>35c</b>	
<b>36. Trusts Taxable at Trust Rates.</b> See instructions for tax computation. Income tax on the amount on line 34 from <input type="checkbox"/> Tax rate schedule or <input type="checkbox"/> Schedule D (Form 1041) <input type="text"/>	<b>36</b>	
<b>37. Proxy tax.</b> See instructions <input type="text"/>	<b>37</b>	
<b>38. Alternative minimum tax</b> <input type="text"/>	<b>38</b>	
<b>39. Tax on Non-Compliant Facility Income.</b> See instructions <input type="text"/>	<b>39</b>	
<b>40. Total.</b> Add lines 37, 38 and 39 to line 35c or 36, whichever applies <input type="text"/>	<b>40</b>	0

**Part IV Tax and Payments**

<b>41 a</b> Foreign tax credit (corporations attach Form 1118, trusts attach Form 1116) <input type="text"/>	<b>41a</b>	
<b>b</b> Other credits (see instructions) <input type="text"/>	<b>41b</b>	
<b>c</b> General business credit. Attach Form 3800 (see instructions) <input type="text"/>	<b>41c</b>	
<b>d</b> Credit for prior year minimum tax (attach Form 8801 or 8827) <input type="text"/>	<b>41d</b>	
<b>e. Total credits.</b> Add lines 41a through 41d <input type="text"/>	<b>41e</b>	0
<b>42.</b> Subtract line 41e from line 40 <input type="text"/>	<b>42</b>	0
<b>43.</b> Other taxes. Check if from <input type="checkbox"/> Form 4255 <input type="checkbox"/> Form 8611 <input type="checkbox"/> Form 8697 <input type="checkbox"/> Form 8866 <input type="checkbox"/> Other (attach schedule) <input type="text"/>	<b>43</b>	
<b>44. Total tax.</b> Add lines 42 and 43 <input type="text"/>	<b>44</b>	0
<b>45 a</b> Payments. A 2016 overpayment credited to 2017 <input type="text"/>	<b>45a</b>	
<b>b</b> 2017 estimated tax payments <input type="text"/>	<b>45b</b>	
<b>c</b> Tax deposited with Form 8868 <input type="text"/>	<b>45c</b>	
<b>d</b> Foreign organizations. Tax paid or withheld at source (see instructions) <input type="text"/>	<b>45d</b>	
<b>e</b> Backup withholding (see instructions) <input type="text"/>	<b>45e</b>	
<b>f</b> Credit for small employer health insurance premiums (Attach Form 8941) <input type="text"/>	<b>45f</b>	
<b>g</b> Other credits and payments <input type="checkbox"/> Form 2439 <input type="text"/> <input type="checkbox"/> Form 4136 <input type="checkbox"/> Other <input type="text"/> Total <input type="text"/>	<b>45g</b>	0
<b>46. Total payments.</b> Add lines 45a through 45g <input type="text"/>	<b>46</b>	0
<b>47.</b> Estimated tax penalty (see instructions). Check if Form 2220 is attached <input type="checkbox"/>	<b>47</b>	
<b>48. Tax due.</b> If line 46 is less than the total of lines 44 and 47, enter amount owed <input type="text"/>	<b>48</b>	0
<b>49. Overpayment.</b> If line 46 is larger than the total of lines 44 and 47, enter amount overpaid <input type="text"/>	<b>49</b>	0
<b>50.</b> Enter the amount of line 49 you want <b>Credited to 2018 estimated tax</b> <input type="text"/> <b>Refunded</b> <input type="text"/>	<b>50</b>	0

**Part V Statements Regarding Certain Activities and Other Information** (see instructions)

<b>51.</b> At any time during the 2017 calendar year, did the organization have an interest in or a signature or other authority over a financial account (bank, securities, or other) in a foreign country? If YES, the organization may have to file FinCEN Form 114, Report of Foreign Bank and Financial Accounts. If YES, enter the name of the foreign country here <input type="text"/> <b>China</b>	Yes	No
<b>52.</b> During the tax year, did the organization receive a distribution from, or was it the grantor of, or transferor to, a foreign trust? If YES, see instructions for other forms the organization may have to file <input type="text"/>	X	X
<b>53.</b> Enter the amount of tax-exempt interest received or accrued during the tax year <input type="text"/> \$ <input type="text"/>		

**Sign Here**

Under penalties of perjury, I declare that I have examined this return, including accompanying schedules and statements, and to the best of my knowledge and belief, it is true, correct, and complete. Declaration of preparer (other than taxpayer) is based on all information of which preparer has any knowledge.

*Stella Liang*  
Signature of officer

11/15/2018

Date

Director

Title

May the IRS discuss this return with the preparer shown below (see instructions)? ☐ Yes ☐ No

**Paid Preparer Use Only**

Print/Type preparer's name

Preparer's signature

Date

Check ☐ if self-employed

PTIN

Firm's name Firm's EIN Firm's address Phone no

**Schedule A—Cost of Goods Sold.** Enter method of inventory valuation ►

<b>1</b>	Inventory at beginning of year	<b>1</b>		<b>6</b>	Inventory at end of year	<b>6</b>	
<b>2</b>	Purchases	<b>2</b>		<b>7</b>	<b>Cost of goods sold.</b> Subtract line 6 from line 5. Enter here and in Part I, line 2	<b>7</b>	0
<b>3</b>	Cost of labor	<b>3</b>					
<b>4 a</b>	Additional section 263A costs (attach schedule)	<b>4a</b>		<b>8</b>	Do the rules of section 263A (with respect to property produced or acquired for resale) apply to the organization?	Yes	No
<b>b</b>	Other costs (attach schedule)	<b>4b</b>					
<b>5</b>	<b>Total.</b> Add lines 1 through 4b	<b>5</b>	0				

**Schedule C—Rent Income (From Real Property and Personal Property Leased With Real Property)**

(see instructions)

1. Description of property		
(1) Leased Equipment		
(2)		
(3)		
(4)		
2. Rent received or accrued		
(a) From personal property (if the percentage of rent for personal property is more than 10% but not more than 50%)	(b) From real and personal property (if the percentage of rent for personal property exceeds 50% or if the rent is based on profit or income)	3(a) Deductions directly connected with the income in columns 2(a) and 2(b) (attach schedule)
(1)		
(2)		
(3)		
(4)		
Total	0	Total 0
(c) <b>Total income.</b> Add totals of columns 2(a) and 2(b). Enter here and on page 1, Part I, line 6, column (A) ►		(b) <b>Total deductions.</b> Enter here and on page 1, Part I, line 6, column (B) ► 0

**Schedule E—Unrelated Debt-Financed Income** (see instructions)

1. Description of debt-financed property		2. Gross income from or allocable to debt-financed property	3. Deductions directly connected with or allocable to debt-financed property	
			(a) Straight line depreciation (attach schedule)	(b) Other deductions (attach schedule)
(1)				
(2)				
(3)				
(4)				
4. Amount of average acquisition debt on or allocable to debt-financed property (attach schedule)	5. Average adjusted basis of or allocable to debt-financed property (attach schedule)	6. Column 4 divided by column 5	7. Gross income reportable (column 2 × column 6)	8. Allocable deductions (column 6 × total of columns 3(a) and 3(b))
(1)		%	0	0
(2)		%	0	0
(3)		%	0	0
(4)		%	0	0
<b>Totals</b> ►			Enter here and on page 1, Part I, line 7, column (A). 0	Enter here and on page 1, Part I, line 7, column (B). 0
<b>Total dividends-received deductions</b> included in column 8 ►				

**Schedule F—Interest, Annuities, Royalties, and Rents From Controlled Organizations** (see instructions)

1. Name of controlled organization	2. Employer identification number	Exempt Controlled Organizations			
		3. Net unrelated income (loss) (see instructions)	4. Total of specified payments made	5. Part of column 4 that is included in the controlling organization's gross income	6. Deductions directly connected with income in column 5
(1)					
(2)					
(3)					
(4)					

**Nonexempt Controlled Organizations**

7. Taxable income	8. Net unrelated income (loss) (see instructions)	9. Total of specified payments made	10. Part of column 9 that is included in the controlling organization's gross income	11. Deductions directly connected with income in column 10
(1)				
(2)				
(3)				
(4)				
			Add columns 5 and 10 Enter here and on page 1, Part I, line 8, column (A)	Add columns 6 and 11 Enter here and on page 1, Part I, line 8, column (B)
<b>Totals</b>			0	0

**Schedule G—Investment Income of a Section 501(c)(7), (9), or (17) Organization** (see instructions)

1. Description of income	2. Amount of income	3. Deductions directly connected (attach schedule)	4. Set-asides (attach schedule)	5. Total deductions and set-asides (col 3 plus col 4)
(1)				0
(2)				0
(3)				0
(4)				0
		Enter here and on page 1, Part I, line 9, column (A)		Enter here and on page 1, Part I, line 9, column (B)
<b>Totals</b>		0		0

**Schedule I—Exploited Exempt Activity Income, Other Than Advertising Income** (see instructions)

1. Description of exploited activity	2. Gross unrelated business income from trade or business	3. Expenses directly connected with production of unrelated business income	4. Net income (loss) from unrelated trade or business (column 2 minus column 3) If a gain, compute cols 5 through 7	5. Gross income from activity that is not unrelated business income	6. Expenses attributable to column 5	7. Excess exempt expenses (column 6 minus column 5, but not more than column 4)
(1)			0			0
(2)			0			0
(3)			0			0
(4)			0			0
		Enter here and on page 1, Part I, line 10, col (A)	Enter here and on page 1, Part I, line 10, col (B)			Enter here and on page 1, Part II, line 26
<b>Totals</b>		0	0			0

**Schedule J—Advertising Income** (see instructions)**Part I Income From Periodicals Reported on a Consolidated Basis**

1. Name of periodical	2. Gross advertising income	3. Direct advertising costs	4. Advertising gain or (loss) (col 2 minus col 3) If a gain, compute cols 5 through 7	5. Circulation income	6. Readership costs	7. Excess readership costs (column 6 minus column 5, but not more than column 4)
(1)						
(2)						
(3)						
(4)						
<b>Totals (carry to Part II, line (5))</b>		0	0	0	0	0

**Part II** **Income From Periodicals Reported on a Separate Basis** (For each periodical listed in Part II, fill in columns 2 through 7 on a line-by-line basis.)

1. Name of periodical	2. Gross advertising income	3. Direct advertising costs	4. Advertising gain or (loss) (col 2 minus col 3) If a gain, compute cols 5 through 7	5. Circulation income	6. Readership costs	7. Excess readership costs (column 6 minus column 5, but not more than column 4)
(1)			0			0
(2)			0			0
(3)			0			0
(4)			0			0
<b>Totals from Part I</b> ▶	0	0				0
<b>Totals, Part II (lines 1-5)</b> ▶	Enter here and on page 1, Part I, line 11, col (A) 0	Enter here and on page 1, Part I, line 11, col (B) 0				Enter here and on page 1, Part II, line 27 0

**Schedule K—Compensation of Officers, Directors, and Trustees** (see instructions)

1. Name	2. Title	3. Percent of time devoted to business	4. Compensation attributable to unrelated business
(1)		%	
(2)		%	
(3)		%	
(4)		%	
<b>Total.</b> Enter here and on page 1, Part II, line 14 ▶			0

**Line 5 (990-T) - Income from Partnerships and S Corporations**

1	Share of partnership gross income from unrelated trade or business	1	0
2	Share of partnership deductions directly connected to unrelated trade or business	2	-392,238
3	Share of S Corporation income (loss) excluding capital gains	3	
4	Total	4	-392,238