

Return of Organization Exempt From Income Tax

2017

Under section 501(c), 527, or 4947(a)(1) of the Internal Revenue Code (except private foundations)

Open to Public Inspection

Do not enter social security numbers on this form as it may be made public.

Go to www.irs.gov/Form990 for instructions and the latest information.

Department of the Treasury Internal Revenue Service

A For the 2017 calendar year, or tax year beginning JAN 1, 2017, and ending DEC 31, 2017

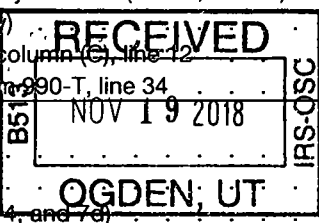
B Check if applicable: Address change, Name change, Initial return, Final return/terminated, Amended return, Application pending. C Name of organization: EQUUS ANAM CARA, INC. Doing business as: HORSE AND HEART RANCH. D Employer identification number: 26-4140188. E Telephone number: 650-248-4450. G Gross receipts \$: 78,686.

F Name and address of principal officer: LORI HALLIDAY, EXEC. DIR, 5017 IRONWOOD DR, SOQUEL, CA 95073. H(a) Is this a group return for subordinates? No. H(b) Are all subordinates included? No. I Tax-exempt status: 501(c)(3). J Website: WWW.HORSEANDHEART.ORG. K Form of organization: Corporation. L Year of formation: 2009. M State of legal domicile: CA.

Part I Summary

SCANNED FEB 21 2018 Revenue & Governance

1 Briefly describe the organization's mission or most significant activities: OUTDOOR EQUINE-FACILITATED LEARNING FOR AT-RISK AND DISADVANTAGED YOUTH. 2 Check this box if the organization discontinued its operations or disposed of more than 25% of its net assets. 3 Number of voting members of the governing body: 3. 4 Number of independent voting members of the governing body: 3. 5 Total number of individuals employed in calendar year 2017: 0. 6 Total number of volunteers (estimate if necessary): 5. 7a Total unrelated business revenue from Part VIII, column (C), line 12: 0. 7b Net unrelated business taxable income from Form 990-T, line 34: 0.



Expenses

Table with 2 columns: Description and Amount. Rows 8-19. 8 Contributions and grants: 35,513 (Prior Year) / 11,495 (Current Year). 9 Program service revenue: 62,647 / 68,116. 10 Investment income: 0 / 0. 11 Other revenue: 0 / (925). 12 Total revenue: 98,160 / 78,686. 13 Grants and similar amounts paid: 256 / 1,068. 14 Benefits paid to or for members: 0 / 0. 15 Salaries, other compensation, employee benefits: 0 / 0. 16a Professional fundraising fees: 0 / 0. 17 Other expenses: 79,523 / 93,930. 18 Total expenses: 79,779 / 94,998. 19 Revenue less expenses: 18,381 / (16,312).

Net Assets or Fund Balances

Table with 2 columns: Description and Amount. Rows 20-22. 20 Total assets: 24,235 (Beginning of Current Year) / 9,853 (End of Year). 21 Total liabilities: 8,312 / 10,243. 22 Net assets or fund balances: 15,923 / (390).

Part II Signature Block

Under penalties of perjury, I declare that I have examined this return, including accompanying schedules and statements, and to the best of my knowledge and belief, it is true, correct, and complete. Declaration of preparer (other than officer) is based on all information of which preparer has any knowledge.

Sign Here: Signature of officer: Lori Halliday, EXECUTIVE DIRECTOR. Date: NOV 13, 2018.

Paid Preparer Use Only: Preparer's name, signature, date, firm's name, EIN, address, phone no.

May the IRS discuss this return with the preparer shown above? (see instructions) Yes No

919

Part III Statement of Program Service Accomplishments

Check if Schedule O contains a response or note to any line in this Part III

1 Briefly describe the organization's mission: (HORSE AND HEART.ORG / EQUUSANAMKARA)
INCREASE EMOTIONAL WELLNESS, LIFE AND SOCIAL SKILLS THROUGH AN ACTIVE OUTDOOR EXPERIENCE THAT IS MORE COMPELLING AND EFFECTIVE THAN TRADITIONAL TALK THERAPY. EQUINE-FACILITATED LEARNING OUTCOMES INCLUDE FEELINGS OF BELONGING, WELL-BEING, EMPATHY, SELF CONTROL AND REDUCTION OF INEFFECTIVE BEHAVIORS FOR ADULTS, YOUTH + FAMILIES IN SANTA CRUZ COUNTY.

2 Did the organization undertake any significant program services during the year which were not listed on the prior Form 990 or 990-EZ? Yes No
If "Yes," describe these new services on Schedule O.

3 Did the organization cease conducting, or make significant changes in how it conducts, any program services? Yes No
If "Yes," describe these changes on Schedule O.

4 Describe the organization's program service accomplishments for each of its three largest program services, as measured by expenses. Section 501(c)(3) and 501(c)(4) organizations are required to report the amount of grants and allocations to others, the total expenses, and revenue, if any, for each program service reported.

4a (Code: 611620) (Expenses \$ 49,369 including grants of \$ 0) (Revenue \$ 54,081)
NOT INCLUDING G+A

EQUINE FACILITATED LEARNING SESSIONS CONDUCTED BY EXEC DIR LORI HALLIDAY, STEPHANIE MEUX, AND ELLA HALLIDAY FOR COGNITIVELY-DISABLED ADULTS, AT-RISK YOUTH (FROM LOCAL FOSTER PROGRAMS + COURT-APPOINTED SPECIAL ADVOCATES), AND FAMILIES. EAC, INC.'S EFL EXPERIENCES PROVIDE BEHAVIORAL MODELS APPLICABLE BY ANTHOLOGY AND THEN IN PRACTICE TO A CHILD OR CLIENT'S DEVELOPING SOCIAL + LIFE SKILLS.

4b (Code: 611620) (Expenses \$ 21,010 including grants of \$ 0) (Revenue \$ 8,035)
NOT INCLUDING G+A

EQUINE SUMMER DAY CAMP
AMONG THE MOST MEMORABLE FORMATIVE EXPERIENCES, SUMMER CAMP CONNECTS YOUTH TO NATURE, FOSTERS COMMUNITY + TEAMWORK, ENHANCES SELF-CONFIDENCE, SOCIAL SKILLS AND MODELS HEALTHY HUMAN LIVING WITH ANIMALS. THIS IS THE PRIMARY TARGET OF EAC, INC.'S FUNDRAISING, ENABLING 1/3 - 1/2 OF ENROLLED CAMPERS TO COME ON SCHOLARSHIP, SURMOUNTING THE BARRIERS TO ACCESS THAT MAKE SUMMER CAMP INACCESSIBLE TO DISADVANTAGED YOUTH 5-16.

4c (Code: 115210) (Expenses \$ 5,000 including grants of \$ 0) (Revenue \$ 6,000)

4d Other program services (Describe in Schedule O.)
(Expenses \$ 75,379 including grants of \$ 0) (Revenue \$ 68,116)

4e Total program service expenses ▶

Part IV Checklist of Required Schedules

		Yes	No
1	Is the organization described in section 501(c)(3) or 4947(a)(1) (other than a private foundation)? If "Yes," complete Schedule A	X	
2	Is the organization required to complete Schedule B, Schedule of Contributors (see instructions)?	X	
3	Did the organization engage in direct or indirect political campaign activities on behalf of or in opposition to candidates for public office? If "Yes," complete Schedule C, Part I		X
4	Section 501(c)(3) organizations. Did the organization engage in lobbying activities, or have a section 501(h) election in effect during the tax year? If "Yes," complete Schedule C, Part II		X
5	Is the organization a section 501(c)(4), 501(c)(5), or 501(c)(6) organization that receives membership dues, assessments, or similar amounts as defined in Revenue Procedure 98-19? If "Yes," complete Schedule C, Part III		X
6	Did the organization maintain any donor advised funds or any similar funds or accounts for which donors have the right to provide advice on the distribution or investment of amounts in such funds or accounts? If "Yes," complete Schedule D, Part I		X
7	Did the organization receive or hold a conservation easement, including easements to preserve open space, the environment, historic land areas, or historic structures? If "Yes," complete Schedule D, Part II		X
8	Did the organization maintain collections of works of art, historical treasures, or other similar assets? If "Yes," complete Schedule D, Part III		X
9	Did the organization report an amount in Part X, line 21, for escrow or custodial account liability, serve as a custodian for amounts not listed in Part X; or provide credit counseling, debt management, credit repair, or debt negotiation services? If "Yes," complete Schedule D, Part IV		X
10	Did the organization, directly or through a related organization, hold assets in temporarily restricted endowments, permanent endowments, or quasi-endowments? If "Yes," complete Schedule D, Part V		X
11	If the organization's answer to any of the following questions is "Yes," then complete Schedule D, Parts VI, VII, VIII, IX, or X as applicable.		
a	Did the organization report an amount for land, buildings, and equipment in Part X, line 10? If "Yes," complete Schedule D, Part VI		X
b	Did the organization report an amount for investments—other securities in Part X, line 12 that is 5% or more of its total assets reported in Part X, line 16? If "Yes," complete Schedule D, Part VII		X
c	Did the organization report an amount for investments—program related in Part X, line 13 that is 5% or more of its total assets reported in Part X, line 16? If "Yes," complete Schedule D, Part VIII		X
d	Did the organization report an amount for other assets in Part X, line 15 that is 5% or more of its total assets reported in Part X, line 16? If "Yes," complete Schedule D, Part IX		X
e	Did the organization report an amount for other liabilities in Part X, line 25? If "Yes," complete Schedule D, Part X		X
f	Did the organization's separate or consolidated financial statements for the tax year include a footnote that addresses the organization's liability for uncertain tax positions under FIN 48 (ASC 740)? If "Yes," complete Schedule D, Part X		X
12a	Did the organization obtain separate, independent audited financial statements for the tax year? If "Yes," complete Schedule D, Parts XI and XII		X
b	Was the organization included in consolidated, independent audited financial statements for the tax year? If "Yes," and if the organization answered "No" to line 12a, then completing Schedule D, Parts XI and XII is optional		X
13	Is the organization a school described in section 170(b)(1)(A)(ii)? If "Yes," complete Schedule E		X
14a	Did the organization maintain an office, employees, or agents outside of the United States?		X
b	Did the organization have aggregate revenues or expenses of more than \$10,000 from grantmaking, fundraising, business, investment, and program service activities outside the United States, or aggregate foreign investments valued at \$100,000 or more? If "Yes," complete Schedule F, Parts I and IV.		X
15	Did the organization report on Part IX, column (A), line 3, more than \$5,000 of grants or other assistance to or for any foreign organization? If "Yes," complete Schedule F, Parts II and IV		X
16	Did the organization report on Part IX, column (A), line 3, more than \$5,000 of aggregate grants or other assistance to or for foreign individuals? If "Yes," complete Schedule F, Parts III and IV.		X
17	Did the organization report a total of more than \$15,000 of expenses for professional fundraising services on Part IX, column (A), lines 6 and 11e? If "Yes," complete Schedule G, Part I (see instructions)		X
18	Did the organization report more than \$15,000 total of fundraising event gross income and contributions on Part VIII, lines 1c and 8a? If "Yes," complete Schedule G, Part II		X
19	Did the organization report more than \$15,000 of gross income from gaming activities on Part VIII, line 9a? If "Yes," complete Schedule G, Part III		X

Part IV Checklist of Required Schedules (continued)

	Yes	No
20a Did the organization operate one or more hospital facilities? <i>If "Yes," complete Schedule H</i>		<input checked="" type="checkbox"/>
b If "Yes" to line 20a, did the organization attach a copy of its audited financial statements to this return?		
21 Did the organization report more than \$5,000 of grants or other assistance to any domestic organization or domestic government on Part IX, column (A), line 1? <i>If "Yes," complete Schedule I, Parts I and II</i>		<input checked="" type="checkbox"/>
22 Did the organization report more than \$5,000 of grants or other assistance to or for domestic individuals on Part IX, column (A), line 2? <i>If "Yes," complete Schedule I, Parts I and III</i>		<input checked="" type="checkbox"/>
23 Did the organization answer "Yes" to Part VII, Section A, line 3, 4, or 5 about compensation of the organization's current and former officers, directors, trustees, key employees, and highest compensated employees? <i>If "Yes," complete Schedule J</i>		<input checked="" type="checkbox"/>
24a Did the organization have a tax-exempt bond issue with an outstanding principal amount of more than \$100,000 as of the last day of the year, that was issued after December 31, 2002? <i>If "Yes," answer lines 24b through 24d and complete Schedule K. If "No," go to line 25a</i>		<input checked="" type="checkbox"/>
b Did the organization invest any proceeds of tax-exempt bonds beyond a temporary period exception?		<input checked="" type="checkbox"/>
c Did the organization maintain an escrow account other than a refunding escrow at any time during the year to defease any tax-exempt bonds?		<input checked="" type="checkbox"/>
d Did the organization act as an "on behalf of" issuer for bonds outstanding at any time during the year?		<input checked="" type="checkbox"/>
25a Section 501(c)(3), 501(c)(4), and 501(c)(29) organizations. Did the organization engage in an excess benefit transaction with a disqualified person during the year? <i>If "Yes," complete Schedule L, Part I</i>		<input checked="" type="checkbox"/>
b Is the organization aware that it engaged in an excess benefit transaction with a disqualified person in a prior year, and that the transaction has not been reported on any of the organization's prior Forms 990 or 990-EZ? <i>If "Yes," complete Schedule L, Part I</i>		<input checked="" type="checkbox"/>
26 Did the organization report any amount on Part X, line 5, 6, or 22 for receivables from or payables to any current or former officers, directors, trustees, key employees, highest compensated employees, or disqualified persons? <i>If "Yes," complete Schedule L, Part II</i>	<input checked="" type="checkbox"/>	
27 Did the organization provide a grant or other assistance to an officer, director, trustee, key employee, substantial contributor or employee thereof, a grant selection committee member, or to a 35% controlled entity or family member of any of these persons? <i>If "Yes," complete Schedule L, Part III</i>		<input checked="" type="checkbox"/>
28 Was the organization a party to a business transaction with one of the following parties (see Schedule L, Part IV instructions for applicable filing thresholds, conditions, and exceptions):		
a A current or former officer, director, trustee, or key employee? <i>If "Yes," complete Schedule L, Part IV</i>	<input checked="" type="checkbox"/>	
b A family member of a current or former officer, director, trustee, or key employee? <i>If "Yes," complete Schedule L, Part IV</i>	<input checked="" type="checkbox"/>	
c An entity of which a current or former officer, director, trustee, or key employee (or a family member thereof) was an officer, director, trustee, or direct or indirect owner? <i>If "Yes," complete Schedule L, Part IV</i>		<input checked="" type="checkbox"/>
29 Did the organization receive more than \$25,000 in non-cash contributions? <i>If "Yes," complete Schedule M</i>		<input checked="" type="checkbox"/>
30 Did the organization receive contributions of art, historical treasures, or other similar assets, or qualified conservation contributions? <i>If "Yes," complete Schedule M</i>		<input checked="" type="checkbox"/>
31 Did the organization liquidate, terminate, or dissolve and cease operations? <i>If "Yes," complete Schedule N, Part I</i>		<input checked="" type="checkbox"/>
32 Did the organization sell, exchange, dispose of, or transfer more than 25% of its net assets? <i>If "Yes," complete Schedule N, Part II</i>		<input checked="" type="checkbox"/>
33 Did the organization own 100% of an entity disregarded as separate from the organization under Regulations sections 301.7701-2 and 301.7701-3? <i>If "Yes," complete Schedule R, Part I</i>		<input checked="" type="checkbox"/>
34 Was the organization related to any tax-exempt or taxable entity? <i>If "Yes," complete Schedule R, Part II, III, or IV, and Part V, line 1</i>		<input checked="" type="checkbox"/>
35a Did the organization have a controlled entity within the meaning of section 512(b)(13)?		<input checked="" type="checkbox"/>
b If "Yes" to line 35a, did the organization receive any payment from or engage in any transaction with a controlled entity within the meaning of section 512(b)(13)? <i>If "Yes," complete Schedule R, Part V, line 2</i>		<input checked="" type="checkbox"/>
36 Section 501(c)(3) organizations. Did the organization make any transfers to an exempt non-charitable related organization? <i>If "Yes," complete Schedule R, Part V, line 2</i>		<input checked="" type="checkbox"/>
37 Did the organization conduct more than 5% of its activities through an entity that is not a related organization and that is treated as a partnership for federal income tax purposes? <i>If "Yes," complete Schedule R, Part VI</i>		<input checked="" type="checkbox"/>
38 Did the organization complete Schedule O and provide explanations in Schedule O for Part VI, lines 11b and 19? Note. All Form 990 filers are required to complete Schedule O.	<input checked="" type="checkbox"/>	

Part V Statements Regarding Other IRS Filings and Tax Compliance

Check if Schedule O contains a response or note to any line in this Part V

		Yes	No
1a	Enter the number reported in Box 3 of Form 1096. Enter -0- if not applicable	0	
b	Enter the number of Forms W-2G included in line 1a. Enter -0- if not applicable	0	
c	Did the organization comply with backup withholding rules for reportable payments to vendors and reportable gaming (gambling) winnings to prize winners?	N/A	
2a	Enter the number of employees reported on Form W-3, Transmittal of Wage and Tax Statements, filed for the calendar year ending with or within the year covered by this return	0	
b	If at least one is reported on line 2a, did the organization file all required federal employment tax returns? Note. If the sum of lines 1a and 2a is greater than 250, you may be required to e-file (see instructions)	N/A	
3a	Did the organization have unrelated business gross income of \$1,000 or more during the year?		X
b	If "Yes," has it filed a Form 990-T for this year? If "No" to line 3b, provide an explanation in Schedule O	N/A	
4a	At any time during the calendar year, did the organization have an interest in, or a signature or other authority over, a financial account in a foreign country (such as a bank account, securities account, or other financial account)?		X
b	If "Yes," enter the name of the foreign country: See instructions for filing requirements for FinCEN Form 114, Report of Foreign Bank and Financial Accounts (FBAR).		
5a	Was the organization a party to a prohibited tax shelter transaction at any time during the tax year?		X
b	Did any taxable party notify the organization that it was or is a party to a prohibited tax shelter transaction?	N/A	
c	If "Yes" to line 5a or 5b, did the organization file Form 8886-T?	N/A	
6a	Does the organization have annual gross receipts that are normally greater than \$100,000, and did the organization solicit any contributions that were not tax deductible as charitable contributions?		X
b	If "Yes," did the organization include with every solicitation an express statement that such contributions or gifts were not tax deductible?	N/A	
7	Organizations that may receive deductible contributions under section 170(c).		
a	Did the organization receive a payment in excess of \$75 made partly as a contribution and partly for goods and services provided to the payor?		X
b	If "Yes," did the organization notify the donor of the value of the goods or services provided?	N/A	
c	Did the organization sell, exchange, or otherwise dispose of tangible personal property for which it was required to file Form 8282?		X
d	If "Yes," indicate the number of Forms 8282 filed during the year	7d	
e	Did the organization receive any funds, directly or indirectly, to pay premiums on a personal benefit contract?		X
f	Did the organization, during the year, pay premiums, directly or indirectly, on a personal benefit contract?		X
g	If the organization received a contribution of qualified intellectual property, did the organization file Form 8899 as required?	N/A	
h	If the organization received a contribution of cars, boats, airplanes, or other vehicles, did the organization file a Form 1098-C?	N/A	
8	Sponsoring organizations maintaining donor advised funds. Did a donor advised fund maintained by the sponsoring organization have excess business holdings at any time during the year?	N/A	
9	Sponsoring organizations maintaining donor advised funds.		
a	Did the sponsoring organization make any taxable distributions under section 4966?	N/A	
b	Did the sponsoring organization make a distribution to a donor, donor advisor, or related person?		
10	Section 501(c)(7) organizations. Enter:		
a	Initiation fees and capital contributions included on Part VIII, line 12	N/A	
b	Gross receipts, included on Form 990, Part VIII, line 12, for public use of club facilities		
11	Section 501(c)(12) organizations. Enter:		
a	Gross income from members or shareholders	N/A	
b	Gross income from other sources (Do not net amounts due or paid to other sources against amounts due or received from them.)		
12a	Section 4947(a)(1) non-exempt charitable trusts. Is the organization filing Form 990 in lieu of Form 1041?	N/A	
b	If "Yes," enter the amount of tax-exempt interest received or accrued during the year	N/A	
13	Section 501(c)(29) qualified nonprofit health insurance issuers.		
a	Is the organization licensed to issue qualified health plans in more than one state? Note. See the instructions for additional information the organization must report on Schedule O.	N/A	
b	Enter the amount of reserves the organization is required to maintain by the states in which the organization is licensed to issue qualified health plans	N/A	
c	Enter the amount of reserves on hand		
14a	Did the organization receive any payments for indoor tanning services during the tax year?		X
b	If "Yes," has it filed a Form 720 to report these payments? If "No," provide an explanation in Schedule O	N/A	

Part VI Governance, Management, and Disclosure For each "Yes" response to lines 2 through 7b below, and for a "No" response to line 8a, 8b, or 10b below, describe the circumstances, processes, or changes in Schedule O. See instructions.
 Check if Schedule O contains a response or note to any line in this Part VI

Section A. Governing Body and Management

	Yes	No
1a Enter the number of voting members of the governing body at the end of the tax year 1a <u>5</u> If there are material differences in voting rights among members of the governing body, or if the governing body delegated broad authority to an executive committee or similar committee, explain in Schedule O.		
b Enter the number of voting members included in line 1a, above, who are independent 1b <u>3</u>		
2 Did any officer, director, trustee, or key employee have a family relationship or a business relationship with any other officer, director, trustee, or key employee?	<input checked="" type="checkbox"/>	
3 Did the organization delegate control over management duties customarily performed by or under the direct supervision of officers, directors, or trustees, or key employees to a management company or other person?		<input checked="" type="checkbox"/>
4 Did the organization make any significant changes to its governing documents since the prior Form 990 was filed?		<input checked="" type="checkbox"/>
5 Did the organization become aware during the year of a significant diversion of the organization's assets?		<input checked="" type="checkbox"/>
6 Did the organization have members or stockholders?		<input checked="" type="checkbox"/>
7a Did the organization have members, stockholders, or other persons who had the power to elect or appoint one or more members of the governing body?		<input checked="" type="checkbox"/>
b Are any governance decisions of the organization reserved to (or subject to approval by) members, stockholders, or persons other than the governing body?		<input checked="" type="checkbox"/>
8 Did the organization contemporaneously document the meetings held or written actions undertaken during the year by the following:		
a The governing body?	<input checked="" type="checkbox"/>	
b Each committee with authority to act on behalf of the governing body? <u>NO SUCH COMMITTEE.</u>	<u>N/A</u>	
9 Is there any officer, director, trustee, or key employee listed in Part VII, Section A, who cannot be reached at the organization's mailing address? If "Yes," provide the names and addresses in Schedule O		<input checked="" type="checkbox"/>

Section B. Policies (This Section B requests information about policies not required by the Internal Revenue Code.)

	Yes	No
10a Did the organization have local chapters, branches, or affiliates?		<input checked="" type="checkbox"/>
b If "Yes," did the organization have written policies and procedures governing the activities of such chapters, affiliates, and branches to ensure their operations are consistent with the organization's exempt purposes?	<u>N/A</u>	
11a Has the organization provided a complete copy of this Form 990 to all members of its governing body before filing the form?		<input checked="" type="checkbox"/>
b Describe in Schedule O the process, if any, used by the organization to review this Form 990.		
12a Did the organization have a written conflict of interest policy? If "No," go to line 13		<input checked="" type="checkbox"/>
b Were officers, directors, or trustees, and key employees required to disclose annually interests that could give rise to conflicts?		
c Did the organization regularly and consistently monitor and enforce compliance with the policy? If "Yes," describe in Schedule O how this was done		
13 Did the organization have a written whistleblower policy?		<input checked="" type="checkbox"/>
14 Did the organization have a written document retention and destruction policy?		<input checked="" type="checkbox"/>
15 Did the process for determining compensation of the following persons include a review and approval by independent persons, comparability data, and contemporaneous substantiation of the deliberation and decision?		
a The organization's CEO, Executive Director, or top management official <u>NO COMPENSATION</u>		<input checked="" type="checkbox"/>
b Other officers or key employees of the organization <u>NONE</u>		<input checked="" type="checkbox"/>
If "Yes" to line 15a or 15b, describe the process in Schedule O (see instructions).		
16a Did the organization invest in, contribute assets to, or participate in a joint venture or similar arrangement with a taxable entity during the year?		<input checked="" type="checkbox"/>
b If "Yes," did the organization follow a written policy or procedure requiring the organization to evaluate its participation in joint venture arrangements under applicable federal tax law, and take steps to safeguard the organization's exempt status with respect to such arrangements?	<u>N/A</u>	

Section C. Disclosure

- 17** List the states with which a copy of this Form 990 is required to be filed ► CALIFORNIA
- 18** Section 6104 requires an organization to make its Forms 1023 (or 1024 if applicable), 990, and 990-T (Section 501(c)(3)s only) available for public inspection. Indicate how you made these available. Check all that apply.
 Own website Another's website Upon request Other (explain in Schedule O)
- 19** Describe in Schedule O whether (and if so, how) the organization made its governing documents, conflict of interest policy, and financial statements available to the public during the tax year.
- 20** State the name, address, and telephone number of the person who possesses the organization's books and records: ►
ANDY HALLIDAY 650-248-4450 5017 IRANWOOD DR, 50606 CA 95073

Part VII Compensation of Officers, Directors, Trustees, Key Employees, Highest Compensated Employees, and Independent Contractors

Check if Schedule O contains a response or note to any line in this Part VII

Section A. Officers, Directors, Trustees, Key Employees, and Highest Compensated Employees

1a Complete this table for all persons required to be listed. Report compensation for the calendar year ending with or within the organization's tax year.

- List all of the organization's **current** officers, directors, trustees (whether individuals or organizations), regardless of amount of compensation. Enter -0- in columns (D), (E), and (F) if no compensation was paid.
- List all of the organization's **current** key employees, if any. See instructions for definition of "key employee."
- List the organization's five **current** highest compensated employees (other than an officer, director, trustee, or key employee) who received reportable compensation (Box 5 of Form W-2 and/or Box 7 of Form 1099-MISC) of more than \$100,000 from the organization and any related organizations.
- List all of the organization's **former** officers, key employees, and highest compensated employees who received more than \$100,000 of reportable compensation from the organization and any related organizations.
- List all of the organization's **former directors or trustees** that received, in the capacity as a former director or trustee of the organization, more than \$10,000 of reportable compensation from the organization and any related organizations.

List persons in the following order: individual trustees or directors; institutional trustees; officers; key employees; highest compensated employees; and former such persons.

Check this box if neither the organization nor any related organization compensated any current officer, director, or trustee.

(A) Name and Title	(B) Average hours per week (list any hours for related organizations below dotted line)	(C) Position (do not check more than one box, unless person is both an officer and a director/trustee)						(D) Reportable compensation from the organization (W-2/1099-MISC)	(E) Reportable compensation from related organizations (W-2/1099-MISC)	(F) Estimated amount of other compensation from the organization and related organizations
		Individual trustee or director	Institutional trustee	Officer	Key employee	Highest compensated employee	Former			
(1) LORI HALLIDAY EXECUTIVE DIRECTOR	35	X		X			0	0	0	
(2) ANDY HALLIDAY SECRETARY	15			X			0	0	0	
(3) MARNI WILLIAMS DIRECTOR	.5	X					0	0	0	
(4) DAM SANTACROCE DIRECTOR	.5	X					0	0	0	
(5) DIANE KAZEMI DIRECTOR	.5	X					0	0	0	
(6)										
(7)										
(8)										
(9)										
(10)										
(11)										
(12)										
(13)										
(14)										

Part VII Section A. Officers, Directors, Trustees, Key Employees, and Highest Compensated Employees (continued)

(A) Name and title	(B) Average hours per week (list any hours for related organizations below dotted line)	(C) Position (do not check more than one box, unless person is both an officer and a director/trustee)						(D) Reportable compensation from the organization (W-2/1099-MISC)	(E) Reportable compensation from related organizations (W-2/1099-MISC)	(F) Estimated amount of other compensation from the organization and related organizations
		Individual trustee or director	Institutional trustee	Officer	Key employee	Highest compensated employee	Former			
(15)										
(16)										
(17)										
(18)										
(19)										
(20)										
(21)										
(22)										
(23)										
(24)										
(25)										
1b Sub-total							0	0	0	
c Total from continuation sheets to Part VII, Section A							0	0	0	
d Total (add lines 1b and 1c)							0	0	0	

2 Total number of individuals (including but not limited to those listed above) who received more than \$100,000 of reportable compensation from the organization 0

3 Did the organization list any **former** officer, director, or trustee, key employee, or highest compensated employee on line 1a? *If "Yes," complete Schedule J for such individual*

	Yes	No
3		X
4		X
5		X

4 For any individual listed on line 1a, is the sum of reportable compensation and other compensation from the organization and related organizations greater than \$150,000? *If "Yes," complete Schedule J for such individual*

5 Did any person listed on line 1a receive or accrue compensation from any unrelated organization or individual for services rendered to the organization? *If "Yes," complete Schedule J for such person*

Section B. Independent Contractors

1 Complete this table for your five highest compensated independent contractors that received more than \$100,000 of compensation from the organization. Report compensation for the calendar year ending with or within the organization's tax year.

(A) Name and business address	(B) Description of services	(C) Compensation
NONE		

2 Total number of independent contractors (including but not limited to those listed above) who received more than \$100,000 of compensation from the organization 0

Part VIII Statement of Revenue

Check if Schedule O contains a response or note to any line in this Part VIII

				(A) Total revenue	(B) Related or exempt function revenue	(C) Unrelated business revenue	(D) Revenue excluded from tax under sections 512-514	
Contributions, Gifts, Grants and Other Similar Amounts	1a Federated campaigns	1a						
	b Membership dues	1b						
	c Fundraising events	1c	1,320					
	d Related organizations	1d						
	e Government grants (contributions)	1e						
	f All other contributions, gifts, grants, and similar amounts not included above	1f	10,175					
	q Noncash contributions included in lines 1a-1f \$							
	h Total. Add lines 1a-1f ▶			11,495				
Program Service Revenue	2a EFL SESSIONS	Business Code	611620	54,081				
	b			8,035				
	c			6,000				
	d							
	e							
	f All other program service revenue .							
	q Total. Add lines 2a-2f ▶			68,116				
Other Revenue	3 Investment income (including dividends, interest, and other similar amounts) ▶			0				
	4 Income from investment of tax-exempt bond proceeds ▶			0				
	5 Royalties ▶			0				
	6a Gross rents	(i) Real	(ii) Personal					
		b Less: rental expenses						
		c Rental income or (loss)						
	d Net rental income or (loss) ▶				0			
	7a Gross amount from sales of assets other than inventory	(i) Securities	(ii) Other					
		b Less: cost or other basis and sales expenses						
		c Gain or (loss)						
		d Net gain or (loss) ▶				0		
	8a Gross income from fundraising events (not including \$ 1,320 of contributions reported on line 1c). See Part IV, line 18	a		4,180				
		b Less: direct expenses	b	5,105				
		c Net income or (loss) from fundraising events . ▶			(925)			
	9a Gross income from gaming activities. See Part IV, line 19	a						
b Less: direct expenses		b						
c Net income or (loss) from gaming activities . . ▶				0				
10a Gross sales of inventory, less returns and allowances	a							
	b Less: cost of goods sold	b						
	c Net income or (loss) from sales of inventory . . ▶			0				
Miscellaneous Revenue		Business Code						
11a								
	b							
	c							
	d All other revenue			0				
	e Total. Add lines 11a-11d ▶			0				
12 Total revenue. See instructions. ▶				78,686				

Part IX Statement of Functional Expenses

Section 501(c)(3) and 501(c)(4) organizations must complete all columns. All other organizations must complete column (A).

Check if Schedule O contains a response or note to any line in this Part IX

Do not include amounts reported on lines 6b, 7b, 8b, 9b, and 10b of Part VIII.

	(A) Total expenses	(B) Program service expenses	(C) Management and general expenses	(D) Fundraising expenses
1 Grants and other assistance to domestic organizations and domestic governments. See Part IV, line 21 . . .	1,068	1,068		
2 Grants and other assistance to domestic individuals. See Part IV, line 22	0			
3 Grants and other assistance to foreign organizations, foreign governments, and foreign individuals. See Part IV, lines 15 and 16	0			
4 Benefits paid to or for members	0			
5 Compensation of current officers, directors, trustees, and key employees	0			
6 Compensation not included above, to disqualified persons (as defined under section 4958(f)(1)) and persons described in section 4958(c)(3)(B)	0			
7 Other salaries and wages	0			
8 Pension plan accruals and contributions (include section 401(k) and 403(b) employer contributions)	0			
9 Other employee benefits	0			
10 Payroll taxes	0			
11 Fees for services (non-employees):				
a Management	0			
b Legal	0			
c Accounting	265			
d Lobbying	0			
e Professional fundraising services See Part IV, line 17	0			
f Investment management fees	0			
g Other. (If line 11g amount exceeds 10% of line 25, column (A) amount, list line 11g expenses on Schedule O.)	17,261			
12 Advertising and promotion	2,077			
13 Office expenses	0			
14 Information technology	0			
15 Royalties	0			
16 Occupancy	11,000			
17 Travel	3,277			
18 Payments of travel or entertainment expenses for any federal, state, or local public officials	0			
19 Conferences, conventions, and meetings	4,364			
20 Interest	430			
21 Payments to affiliates	0			
22 Depreciation, depletion, and amortization	0			
23 Insurance	3,231			
24 Other expenses. Itemize expenses not covered above (List miscellaneous expenses in line 24e. If line 24e amount exceeds 10% of line 25, column (A) amount, list line 24e expenses on Schedule O.)				
a -----	—			
b -----	—			
c -----	—			
d -----	—			
e All other expenses -----	52,025			
25 Total functional expenses. Add lines 1 through 24e	94,998	1068		
26 Joint costs. Complete this line only if the organization reported in column (B) joint costs from a combined educational campaign and fundraising solicitation. Check here <input type="checkbox"/> if following SOP 98-2 (ASC 958-720)				

Part X Balance Sheet

Check if Schedule O contains a response or note to any line in this Part X

		(A) Beginning of year		(B) End of year	
Assets	1	Cash—non-interest-bearing	9,135	1	7,448
	2	Savings and temporary cash investments	15,100	2	2,405
	3	Pledges and grants receivable, net	0	3	0
	4	Accounts receivable, net	0	4	0
	5	Loans and other receivables from current and former officers, directors, trustees, key employees, and highest compensated employees. Complete Part II of Schedule L	0	5	0
	6	Loans and other receivables from other disqualified persons (as defined under section 4958(f)(1)), persons described in section 4958(c)(3)(B), and contributing employers and sponsoring organizations of section 501(c)(9) voluntary employees' beneficiary organizations (see instructions). Complete Part II of Schedule L	0	6	0
	7	Notes and loans receivable, net	0	7	0
	8	Inventories for sale or use	0	8	0
	9	Prepaid expenses and deferred charges	0	9	0
	10a	Land, buildings, and equipment: cost or other basis. Complete Part VI of Schedule D	10a 0		
	b	Less: accumulated depreciation	10b 0	10c	0
	11	Investments—publicly traded securities	0	11	0
	12	Investments—other securities. See Part IV, line 11	0	12	0
	13	Investments—program-related. See Part IV, line 11	0	13	0
	14	Intangible assets	0	14	0
	15	Other assets. See Part IV, line 11	0	15	0
16	Total assets. Add lines 1 through 15 (must equal line 34)	24,235	16	9,853	
Liabilities	17	Accounts payable and accrued expenses	3,105	17	7,148
	18	Grants payable		18	
	19	Deferred revenue		19	
	20	Tax-exempt bond liabilities		20	
	21	Escrow or custodial account liability. Complete Part IV of Schedule D		21	
	22	Loans and other payables to current and former officers, directors, trustees, key employees, highest compensated employees, and disqualified persons. Complete Part II of Schedule L	5,207	22	3,095
	23	Secured mortgages and notes payable to unrelated third parties	0	23	0
	24	Unsecured notes and loans payable to unrelated third parties	0	24	0
	25	Other liabilities (including federal income tax, payables to related third parties, and other liabilities not included on lines 17-24). Complete Part X of Schedule D		25	
	26	Total liabilities. Add lines 17 through 25	8,312	26	10,243
Net Assets or Fund Balances	Organizations that follow SFAS 117 (ASC 958), check here <input checked="" type="checkbox"/> and complete lines 27 through 29, and lines 33 and 34.				
	27	Unrestricted net assets	15,923	27	-390
	28	Temporarily restricted net assets	0	28	0
	29	Permanently restricted net assets	0	29	0
	Organizations that do not follow SFAS 117 (ASC 958), check here <input type="checkbox"/> and complete lines 30 through 34.				
	30	Capital stock or trust principal, or current funds	0	30	0
	31	Paid-in or capital surplus, or land, building, or equipment fund	0	31	0
	32	Retained earnings, endowment, accumulated income, or other funds	0	32	0
33	Total net assets or fund balances	15,923	33	-390	
34	Total liabilities and net assets/fund balances	24,235	34	9,853	

Part XI Reconciliation of Net Assets

Check if Schedule O contains a response or note to any line in this Part XI

1	Total revenue (must equal Part VIII, column (A), line 12)	1	78,686
2	Total expenses (must equal Part IX, column (A), line 25)	2	94,998
3	Revenue less expenses. Subtract line 2 from line 1	3	(16,313)
4	Net assets or fund balances at beginning of year (must equal Part X, line 33, column (A))	4	15,923
5	Net unrealized gains (losses) on investments	5	0
6	Donated services and use of facilities	6	0
7	Investment expenses	7	0
8	Prior period adjustments	8	0
9	Other changes in net assets or fund balances (explain in Schedule O)	9	0
10	Net assets or fund balances at end of year. Combine lines 3 through 9 (must equal Part X, line 33, column (B))	10	-390

Part XII Financial Statements and Reporting

Check if Schedule O contains a response or note to any line in this Part XII

	Yes	No
1 Accounting method used to prepare the Form 990: <input checked="" type="checkbox"/> Cash <input type="checkbox"/> Accrual <input type="checkbox"/> Other _____ If the organization changed its method of accounting from a prior year or checked "Other," explain in Schedule O.		
2a Were the organization's financial statements compiled or reviewed by an independent accountant? If "Yes," check a box below to indicate whether the financial statements for the year were compiled or reviewed on a separate basis, consolidated basis, or both: <input type="checkbox"/> Separate basis <input type="checkbox"/> Consolidated basis <input type="checkbox"/> Both consolidated and separate basis		X
b Were the organization's financial statements audited by an independent accountant? If "Yes," check a box below to indicate whether the financial statements for the year were audited on a separate basis, consolidated basis, or both: <input type="checkbox"/> Separate basis <input type="checkbox"/> Consolidated basis <input type="checkbox"/> Both consolidated and separate basis		X
c If "Yes" to line 2a or 2b, does the organization have a committee that assumes responsibility for oversight of the audit, review, or compilation of its financial statements and selection of an independent accountant? If the organization changed either its oversight process or selection process during the tax year, explain in Schedule O.	N/A	
3a As a result of a federal award, was the organization required to undergo an audit or audits as set forth in the Single Audit Act and OMB Circular A-133?		X
b If "Yes," did the organization undergo the required audit or audits? If the organization did not undergo the required audit or audits, explain why in Schedule O and describe any steps taken to undergo such audits.	N/A	

2017- NOTE: 2017 FORMS NOT AVAIL ON IRS.GOV 11/18 OMB No. 1545-0047

SCHEDULE A
(Form 990 or 990-EZ)

Public Charity Status and Public Support

Complete if the organization is a section 501(c)(3) organization or a section 4947(a)(1) nonexempt charitable trust.

▶ Attach to Form 990 or Form 990-EZ.

▶ Go to www.irs.gov/Form990 for instructions and the latest information.

2017

Open to Public Inspection

Department of the Treasury
Internal Revenue Service

Name of the organization EQUUS ANAM CARA, INC Employer identification number 26-4140188

Part I Reason for Public Charity Status (All organizations must complete this part.) See instructions.

The organization is not a private foundation because it is: (For lines 1 through 12, check only one box.)

- 1 A church, convention of churches, or association of churches described in **section 170(b)(1)(A)(i)**.
- 2 A school described in **section 170(b)(1)(A)(ii)**. (Attach Schedule E (Form 990 or 990-EZ).)
- 3 A hospital or a cooperative hospital service organization described in **section 170(b)(1)(A)(iii)**.
- 4 A medical research organization operated in conjunction with a hospital described in **section 170(b)(1)(A)(iii)**. Enter the hospital's name, city, and state: 09
- 5 An organization operated for the benefit of a college or university owned or operated by a governmental unit described in **section 170(b)(1)(A)(iv)**. (Complete Part II.)
- 6 A federal, state, or local government or governmental unit described in **section 170(b)(1)(A)(v)**.
- 7 An organization that normally receives a substantial part of its support from a governmental unit or from the general public described in **section 170(b)(1)(A)(vi)**. (Complete Part II.)
- 8 A community trust described in **section 170(b)(1)(A)(vi)**. (Complete Part II.)
- 9 An agricultural research organization described in **section 170(b)(1)(A)(ix)** operated in conjunction with a land-grant college or university or a non-land-grant college of agriculture (see instructions). Enter the name, city, and state of the college or university:
- 10 An organization that normally receives: (1) more than 33 1/3% of its support from contributions, membership fees, and gross receipts from activities related to its exempt functions—subject to certain exceptions, and (2) no more than 33 1/3% of its support from gross investment income and unrelated business taxable income (less section 511 tax) from businesses acquired by the organization after June 30, 1975. See **section 509(a)(2)**. (Complete Part III.)
- 11 An organization organized and operated exclusively to test for public safety. See **section 509(a)(4)**.
- 12 An organization organized and operated exclusively for the benefit of, to perform the functions of, or to carry out the purposes of one or more publicly supported organizations described in **section 509(a)(1)** or **section 509(a)(2)**. See **section 509(a)(3)**. Check the box in lines 12a through 12d that describes the type of supporting organization and complete lines 12e, 12f, and 12g.
 - a **Type I.** A supporting organization operated, supervised, or controlled by its supported organization(s), typically by giving the supported organization(s) the power to regularly appoint or elect a majority of the directors or trustees of the supporting organization. **You must complete Part IV, Sections A and B.**
 - b **Type II.** A supporting organization supervised or controlled in connection with its supported organization(s), by having control or management of the supporting organization vested in the same persons that control or manage the supported organization(s). **You must complete Part IV, Sections A and C.**
 - c **Type III functionally integrated.** A supporting organization operated in connection with, and functionally integrated with, its supported organization(s) (see instructions). **You must complete Part IV, Sections A, D, and E.**
 - d **Type III non-functionally integrated.** A supporting organization operated in connection with its supported organization(s) that is not functionally integrated. The organization generally must satisfy a distribution requirement and an attentiveness requirement (see instructions). **You must complete Part IV, Sections A and D, and Part V.**
 - e Check this box if the organization received a written determination from the IRS that it is a Type I, Type II, Type III functionally integrated, or Type III non-functionally integrated supporting organization.
 - f Enter the number of supported organizations 0
 - g Provide the following information about the supported organization(s).

(i) Name of supported organization	(ii) EIN	(iii) Type of organization (described on lines 1-10 above (see instructions))	(iv) Is the organization listed in your governing document?		(v) Amount of monetary support (see instructions)	(vi) Amount of other support (see instructions)
			Yes	No		
(A)						
(B)						
(C)						
(D)						
(E)						
Total						

Part II Support Schedule for Organizations Described in Sections 170(b)(1)(A)(iv) and 170(b)(1)(A)(vi)

(Complete only if you checked the box on line 5, 7, or 8 of Part I or if the organization failed to qualify under Part III. If the organization fails to qualify under the tests listed below, please complete Part III.)

Section A. Public Support

Calendar year (or fiscal year beginning in) ►	(a) 2014	(b) 2015	(c) 2016	(d) 2017	(e) 2018	(f) Total
1 Gifts, grants, contributions, and membership fees received. (Do not include any "unusual grants.")		N/A				
2 Tax revenues levied for the organization's benefit and either paid to or expended on its behalf						
3 The value of services or facilities furnished by a governmental unit to the organization without charge						
4 Total. Add lines 1 through 3						
5 The portion of total contributions by each person (other than a governmental unit or publicly supported organization) included on line 1 that exceeds 2% of the amount shown on line 11, column (f)						
6 Public support. Subtract line 5 from line 4						

Section B. Total Support

Calendar year (or fiscal year beginning in) ►	(a) 2014	(b) 2015	(c) 2016	(d) 2017	(e) 2018	(f) Total
7 Amounts from line 4		N/A				
8 Gross income from interest, dividends, payments received on securities loans, rents, royalties, and income from similar sources						
9 Net income from unrelated business activities, whether or not the business is regularly carried on						
10 Other income. Do not include gain or loss from the sale of capital assets (Explain in Part VI.)						
11 Total support. Add lines 7 through 10						
12 Gross receipts from related activities, etc. (see instructions)					12	
13 First five years. If the Form 990 is for the organization's first, second, third, fourth, or fifth tax year as a section 501(c)(3) organization, check this box and stop here						<input type="checkbox"/>

Section C. Computation of Public Support Percentage

14 Public support percentage for 2018 (line 6, column (f) divided by line 11, column (f))	14	%
15 Public support percentage from 2017 Schedule A, Part II, line 14	15	%
16a 33 1/3% support test—2018. If the organization did not check the box on line 13, and line 14 is 33 1/3% or more, check this box and stop here. The organization qualifies as a publicly supported organization	<input type="checkbox"/>	
b 33 1/3% support test—2017. If the organization did not check a box on line 13 or 16a, and line 15 is 33 1/3% or more, check this box and stop here. The organization qualifies as a publicly supported organization	<input type="checkbox"/>	
17a 10%-facts-and-circumstances test—2018. If the organization did not check a box on line 13, 16a, or 16b, and line 14 is 10% or more, and if the organization meets the "facts-and-circumstances" test, check this box and stop here. Explain in Part VI how the organization meets the "facts-and-circumstances" test. The organization qualifies as a publicly supported organization	<input type="checkbox"/>	
b 10%-facts-and-circumstances test—2017. If the organization did not check a box on line 13, 16a, 16b, or 17a, and line 15 is 10% or more, and if the organization meets the "facts-and-circumstances" test, check this box and stop here. Explain in Part VI how the organization meets the "facts-and-circumstances" test. The organization qualifies as a publicly supported organization	<input type="checkbox"/>	
18 Private foundation. If the organization did not check a box on line 13, 16a, 16b, 17a, or 17b, check this box and see instructions	<input type="checkbox"/>	

Part III Support Schedule for Organizations Described in Section 509(a)(2)

(Complete only if you checked the box on line 10 of Part I or if the organization failed to qualify under Part II. If the organization fails to qualify under the tests listed below, please complete Part II.)

Section A. Public Support

Calendar year (or fiscal year beginning in) ▶	2013	2014	2015	2016	2017	(f) Total
	(a) 2014	(b) 2015	(c) 2016	(d) 2017	(e) 2018	
1 Gifts, grants, contributions, and membership fees received (Do not include any "unusual grants.")	5,935	18,034	15,649	32,315	10,570	82,504
2 Gross receipts from admissions, merchandise sold or services performed, or facilities furnished in any activity that is related to the organization's tax-exempt purpose	25,661	29,291	49,547	62,647	68,116	235,261
3 Gross receipts from activities that are not an unrelated trade or business under section 513						
4 Tax revenues levied for the organization's benefit and either paid to or expended on its behalf						
5 The value of services or facilities furnished by a governmental unit to the organization without charge						
6 Total. Add lines 1 through 5	31,596	47,325	65,196	94,962	78,686	317,765
7a Amounts included on lines 1, 2, and 3 received from disqualified persons						
b Amounts included on lines 2 and 3 received from other than disqualified persons that exceed the greater of \$5,000 or 1% of the amount on line 13 for the year				11,000	5,000	16,000
c Add lines 7a and 7b				11,000	5,000	16,000
8 Public support. (Subtract line 7c from line 6.)						301,765

Section B. Total Support

Calendar year (or fiscal year beginning in) ▶	(a) 2014	(b) 2015	(c) 2016	(d) 2017	(e) 2018	(f) Total
9 Amounts from line 6	31,596	47,325	65,196	94,962	78,686	317,765
10a Gross income from interest, dividends, payments received on securities loans, rents, royalties, and income from similar sources	0	0	0	0	0	0
b Unrelated business taxable income (less section 511 taxes) from businesses acquired after June 30, 1975	0	0	0	0	0	0
c Add lines 10a and 10b	0	0	0	0	0	0
11 Net income from unrelated business activities not included in line 10b, whether or not the business is regularly carried on	0	0	0	0	0	0
12 Other income. Do not include gain or loss from the sale of capital assets (Explain in Part VI.)	0	0	0	0	0	0
13 Total support. (Add lines 9, 10c, 11, and 12.)	31,596	47,325	65,196	94,962	78,686	317,765
14 First five years. If the Form 990 is for the organization's first, second, third, fourth, or fifth tax year as a section 501(c)(3) organization, check this box and stop here ▶ <input type="checkbox"/>						

Section C. Computation of Public Support Percentage

15 Public support percentage for 2018 (line 8, column (f), divided by line 13, column (f))	2017	15	95 %
16 Public support percentage from 2017 Schedule A, Part III, line 15	2016	16	93 %

Section D. Computation of Investment Income Percentage

17 Investment income percentage for 2018 (line 10c, column (f), divided by line 13, column (f))	17	0 %
18 Investment income percentage from 2017 Schedule A, Part III, line 17	18	0 %
19a 33 1/3% support tests—2018 If the organization did not check the box on line 14, and line 15 is more than 33 1/3%, and line 17 is not more than 33 1/3%, check this box and stop here . The organization qualifies as a publicly supported organization ▶ <input checked="" type="checkbox"/>		
b 33 1/3% support tests—2017 If the organization did not check a box on line 14 or line 19a, and line 16 is more than 33 1/3%, and line 18 is not more than 33 1/3%, check this box and stop here . The organization qualifies as a publicly supported organization ▶ <input checked="" type="checkbox"/>		
20 Private foundation. If the organization did not check a box on line 14, 19a, or 19b, check this box and see instructions ▶ <input type="checkbox"/>		

2017 FORMS NOT AVAILABLE @ IRS.GOV

SCHEDULE L
(Form 990 or 990-EZ)

Transactions With Interested Persons

OMB No 1545-0047

2017

Open To Public Inspection

Department of the Treasury
Internal Revenue Service

▶ Complete if the organization answered "Yes" on Form 990, Part IV, line 25a, 25b, 26, 27, 28a, 28b, or 28c, or Form 990-EZ, Part V, line 38a or 40b.
▶ Attach to Form 990 or Form 990-EZ.
▶ Go to www.irs.gov/Form990 for instructions and the latest information.

Name of the organization

EQUUS ANAM CARA, INC

Employer identification number

26-4140188

Part I

Excess Benefit Transactions (section 501(c)(3), section 501(c)(4), and 501(c)(29) organizations only).
Complete if the organization answered "Yes" on Form 990, Part IV, line 25a or 25b, or Form 990-EZ, Part V, line 40b.

1	(a) Name of disqualified person	(b) Relationship between disqualified person and organization	(c) Description of transaction	(d) Corrected?	
				Yes	No
(1)					
(2)					
(3)					
(4)					
(5)					
(6)					

2 Enter the amount of tax incurred by the organization managers or disqualified persons during the year under section 4958. ▶ \$ _____

3 Enter the amount of tax, if any, on line 2, above, reimbursed by the organization ▶ \$ _____

Part II

Loans to and/or From Interested Persons.
Complete if the organization answered "Yes" on Form 990-EZ, Part V, line 38a or Form 990, Part IV, line 26; or if the organization reported an amount on Form 990, Part X, line 5, 6, or 22.

(a) Name of interested person	(b) Relationship with organization	(c) Purpose of loan	(d) Loan to or from the organization?		(e) Original principal amount	(f) Balance due	(g) In default?		(h) Approved by board or committee?		(i) Written agreement?	
			To	From			Yes	No	Yes	No	Yes	No
(1) <i>ANDY HALLIDAY</i>	<i>SECRETARY</i>	<i>WORKING CAPITAL</i>	<i>X</i>		<i>REVOLVING (2016 ENDING) \$5207</i>	<i>\$3095</i>		<i>X</i>	<i>X</i>			<i>X</i>
(2)												
(3)												
(4)												
(5)												
(6)												
(7)												
(8)												
(9)												
(10)												
Total						▶ \$						

Part III

Grants or Assistance Benefiting Interested Persons.
Complete if the organization answered "Yes" on Form 990, Part IV, line 27.

(a) Name of interested person	(b) Relationship between interested person and the organization	(c) Amount of assistance	(d) Type of assistance	(e) Purpose of assistance
(1)				
(2)				
(3)				
(4)				
(5)				
(6)				
(7)				
(8)				
(9)				
(10)				

Part IV Business Transactions Involving Interested Persons.

Complete if the organization answered "Yes" on Form 990, Part IV, line 28a, 28b, or 28c.

	(a) Name of interested person	(b) Relationship between interested person and the organization	(c) Amount of transaction	(d) Description of transaction	(e) Sharing of organization's revenues?	
					Yes	No
(1)	ANDY HALLIDAY	SECRETARY	2017 TOTAL 11,000	MONTHLY FEES FOR FACILITY		X
(2)						
(3)						
(4)						
(5)						
(6)						
(7)						
(8)						
(9)						
(10)						

Part V Supplemental Information.

Provide additional information for responses to questions on Schedule L (see instructions).

IN 2016 WE ADDED A RIDING ARENA TO MAKE IT POSSIBLE FOR CLIENTS WHO
 PROGRESS TO RIDING TO BE ABLE TO RIDE HERE AT HORSE + HEART.
 THE TOTAL COST OF THIS ADDITION WAS PAID BY ANDY HALLIDAY (~\$100,000)
 AND TO SUPPORT THAT ON AN ONGOING BASIS WE BEGAN MONTHLY PAYMENTS
 TO "LEASE" THE ARENA + FACILITIES, FOR WHICH WE NEVER CHARGED BEFORE.
 11 MONTHS X \$1000/MO = \$11,000 PAID IN 2017.

SCHEDULE O
(Form 990 or 990-EZ)

Supplemental Information to Form 990 or 990-EZ

Complete to provide information for responses to specific questions on
Form 990 or 990-EZ or to provide any additional information.

▶ Attach to Form 990 or 990-EZ.

▶ Go to www.irs.gov/Form990 for the latest information.

Department of the Treasury
Internal Revenue Service

Name of the organization

Employer identification number

- ① PART VI, 19 ALL GOVERNING DOCUMENTS AND FINANCIAL STATEMENTS
ARE AVAILABLE TO ANYONE ON REQUEST.
- ② PART IX, 9 ELLA HALLIDAY: \$7365 ASSISTANT TRAINER (SESSION PAY)
STEPHANIE MEUX: \$4298 ASSISTANT TRAINER (SESSION PAY)
YESENIA : \$3248 STABLE HAND (HOURLY)
OTHER CASUAL LABOR: \$2350 (\$2350 TO MULTIPLE INDIVIDUALS FOR WEEK)
TOTAL \$17,261

- ③ PART IX, 24c OTHER EXPENSES:
- | | |
|---|-----------------|
| HAY, GRAIN, WATER, SUPPLEMENTS | \$19,141 |
| HORSE TACK + EQUIPMENT | 3,808 |
| MANURE REMOVAL | 3,590 |
| VETERINARIAN + FARRIER | 9,809 |
| HORSE CONDITIONING | 818 |
| HORSE TRANSPORT | 1,450 |
| SUMMER CAMP EXPENSES | 2,983 |
| SUMMER CAMP CLEANING + MTCE | 900 |
| MISCELLANEOUS | 485 |
| REPAIRS + MAINTENANCE (FENCES, STALLS, GATES) | 6,375 |
| MEALS | 1,362 |
| CAMP REFUND (\$450), CHECK DEPOSIT FROM 2014 (\$800), OTHER | 1,304 |
| | <u>\$52,025</u> |