

Form **990****Return of Organization Exempt From Income Tax**
Under section 501(c), 527, or 4947(a)(1) of the Internal Revenue Code (except private foundations)Department of the Treasury
Internal Revenue Service

▶ Do not enter social security numbers on this form as it may be made public.

▶ Go to www.irs.gov/Form990 for instructions and the latest information.

2017 201712

Open to Public Inspection

A For the 2017 calendar year, or tax year beginning and ending

B Check if applicable:
☐ Address change
☐ Name change
☐ Initial return
☐ Final return/terminated
☐ Amended return
☐ Application pending

C Name of organization
COMMUNITY WORKSHOP RESOURCES, CORP.
 Doing business as
 Number and street (or P.O. box if mail is not delivered to street address) Room/suite
P.O. BOX 771
 City or town, state or province, country, and ZIP or foreign postal code
GLENS FALLS, NY 12801

D Employer identification number
22-2411228

E Telephone number
518-745-8084

G Gross receipts \$ **3,022,633.**

H(a) Is this a group return for subordinates? ☐ Yes ☒ No
H(b) Are all subordinates included? ☐ Yes ☐ No
 If "No," attach a list (see instructions)

F Name and address of principal officer **MARK DONAHUE**
SAME AS C ABOVE

I Tax-exempt status: ☒ 501(c)(3) ☐ 501(c) () (insert no.) ☐ 4947(a)(1) or ☐ 527

J Website: **N/A**

K Form of organization: ☒ Corporation ☐ Trust ☐ Association ☐ Other ▶

L Year of formation: **1980** **M** State of legal domicile: **NY**

Part I Summary

1 Briefly describe the organization's mission or most significant activities: **THE ORGANIZATION PROVIDES FOR THE PURCHASE OF PROPERTY, IMPROVEMENTS, AND REPLACEMENTS WHICH ARE**

2 Check this box ☐ if the organization discontinued its operations or disposed of more than 25% of its net assets

3 Number of voting members of the governing body (Part VI, line 1a) **3**

4 Number of independent voting members of the governing body (Part VI, line 1b) **5**

5 Total number of individuals employed in calendar year 2017 (Part V, line 2a) **0**

6 Total number of volunteers (estimate if necessary) **5**

7a Total unrelated business revenue from Part VIII, column (C), line 12 **1,295,451.**

7b Net unrelated business taxable income from Form 990-T, line 48 **3,840.**

	Prior Year	Current Year
8 Contributions and grants (Part VIII, line 1h)	81,957.	8,826.
9 Program service revenue (Part VIII, line 2g)	759,901.	782,262.
10 Investment income (Part VIII, column (A), lines 3, 4, and 7d)	0.	1,148,373.
11 Other revenue (Part VIII, column (A), lines 5, 6d, 8c, 9c, 10c, and 11e)	88,780.	211,285.
12 Total revenue - add lines 8 through 11 (must equal Part VIII, column (A), line 12)	930,638.	2,150,746.
13 Grants and similar amounts paid (Part IX, column (A), lines 1-3)	0.	0.
14 Benefits paid to or for members (Part IX, column (A), line 4)	0.	0.
15 Salaries, other compensation, employee benefits (Part IX, column (A), lines 5-10)	0.	0.
16a Professional fundraising fees (Part IX, column (A), line 11e)	0.	0.
b Total fundraising expenses (Part IX, column (D), line 25) 0.		
17 Other expenses (Part IX, column (A), lines 11a-11d, 11f-24e)	708,195.	979,831.
18 Total expenses Add lines 13-17 (must equal Part IX, column (A), line 25)	708,195.	979,831.
19 Revenue less expenses Subtract line 18 from line 12	222,443.	1,170,915.
20 Total assets (Part X, line 16)	Beginning of Current Year 3,679,164.	End of Year 4,883,474.
21 Total liabilities (Part X, line 26)	1,083,601.	1,116,996.
22 Net assets or fund balances Subtract line 21 from line 20	2,595,563.	3,766,478.

Part II Signature Block

Under penalties of perjury, I declare that I have examined this return, including accompanying schedules and statements, and to the best of my knowledge and belief, it is true, correct, and complete. Declaration of preparer (other than officer) is based on all information of which preparer has any knowledge

Sign Here
 Signature of officer
MARK DONAHUE, PRESIDENT/CEO
 Type or print name and title

Paid Preparer
 Print/Type preparer's name
ARIEL F AMMIRATO
 Preparer's signature
ARIEL F AMMIRATO
 Date
 Check ☐ if self-employed
 PTIN
P01346991

Preparer Use Only
 Firm's name
BONADIO & CO., LLP
 Firm's address
**6 WEMBLEY COURT
 ALBANY, NY 12205**
 Firm's EIN
16-1131146
 Phone no.
518-464-4080

May the IRS discuss this return with the preparer shown above? (see instructions) ☒ Yes ☐ No

Part III Statement of Program Service AccomplishmentsCheck if Schedule O contains a response or note to any line in this Part III ☐**1** Briefly describe the organization's mission:

PRIMARY PURPOSE IS TO BE A PROPERTY HOLDING COMPANY FOR COMMUNITY,
WORK, AND INDEPENDENCE, INC.

2 Did the organization undertake any significant program services during the year which were not listed on the prior Form 990 or 990-EZ? ☐ Yes ☒ No

If "Yes," describe these new services on Schedule O

3 Did the organization cease conducting, or make significant changes in how it conducts, any program services? ☐ Yes ☒ No

If "Yes," describe these changes on Schedule O

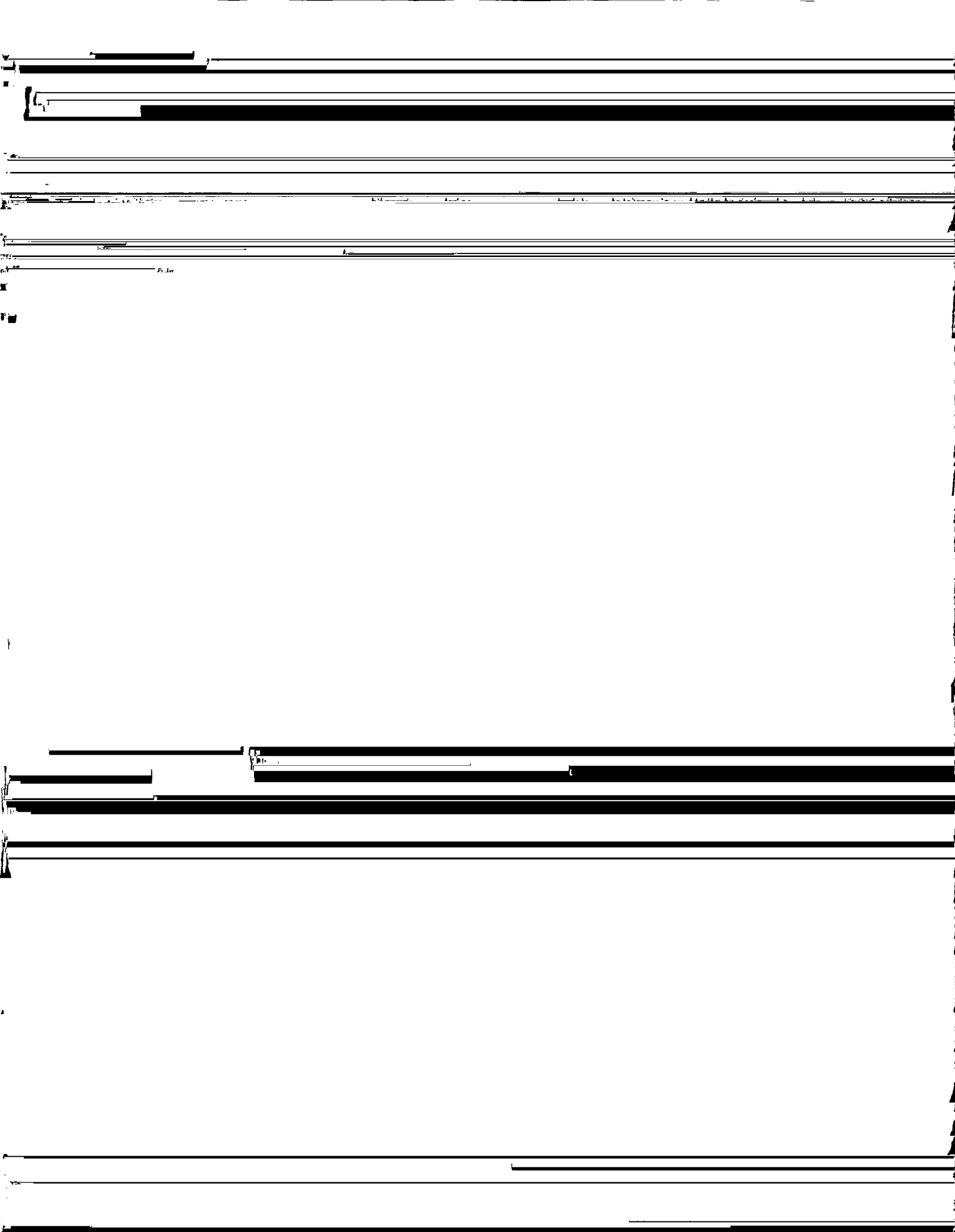
4 Describe the organization's program service accomplishments for each of its three largest program services, as measured by expenses. Section 501(c)(3) and 501(c)(4) organizations are required to report the amount of grants and allocations to others, the total expenses, and revenue, if any, for each program service reported.**4a** (Code) (Expenses \$ 583,986. including grants of \$) (Revenue \$ 635,184.)

ADJRO

Part IV Checklist of Required Schedules

	Yes	No
1 Is the organization described in section 501(c)(3) or 4947(a)(1) (other than a private foundation)? If "Yes," complete Schedule A	X	
2 Is the organization required to complete Schedule B, Schedule of Contributors?		X
3 Did the organization engage in direct or indirect political campaign activities on behalf of or in opposition to candidates for public office? If "Yes," complete Schedule C, Part I		X
4 Section 501(c)(3) organizations. Did the organization engage in lobbying activities, or have a section 501(h) election in effect during the tax year? If "Yes," complete Schedule C, Part II		X
5 Is the organization a section 501(c)(4), 501(c)(5), or 501(c)(6) organization that receives membership dues, assessments, or similar amounts as defined in Revenue Procedure 98-19? If "Yes," complete Schedule C, Part III		X

8 Adjusted Net Income (subtract lines 5, 6, and 7 from line 4)	8		
Section B - Minimum Asset Amount		(A) Prior Year	(B) Current Year (optional)
1 Aggregate fair market value of all non-exempt-use assets (see instructions for short tax year or assets held for part of year)			
a Average monthly value of securities	1a		
b Average monthly cash balances	1b		
c Fair market value of other non-exempt-use assets	1c		
d Total (add lines 1a, 1b, and 1c)	1d		
e Discount claimed for blockage or other factors (explain in detail in Part VI)			
2 Acquisition indebtedness applicable to non-exempt-use assets	2		
3 Subtract line 2 from line 1d	3		
4 Cash deemed held for exempt use Enter 1-1/2% of line 3 (for greater amount, see instructions)	4		
5 Net value of non-exempt-use assets (subtract line 4 from line 3)	5		
6 Multiply line 5 by .035	6		
7 Recoveries of prior-year distributions	7		
8 Minimum Asset Amount (add line 7 to line 6)	8		
Section C - Distributable Amount			Current Year
1 Adjusted net income for prior year (from Section A, line 8, Column A)	1		
2 Enter 85% of line 1	2		
3 Minimum asset amount for prior year (from Section B, line 8, Column A)	3		
4 Enter greater of line 2 or line 3	4		
5 Income tax imposed in prior year	5		
6 Distributable Amount. Subtract line 5 from line 4, unless subject to emergency temporary reduction (see instructions)	6		
7 <input type="checkbox"/> Check here if the current year is the organization's first as a non-functionally integrated Type III supporting organization (see instructions)			



Part V Statements Regarding Other IRS Filings and Tax ComplianceCheck if Schedule O contains a response or note to any line in this Part V ☐

	Yes	No
1a Enter the number reported in Box 3 of Form 1096. Enter -0- if not applicable.		
1b Enter the number of Forms W-2G included in line 1a. Enter -0- if not applicable.		
c Did the organization comply with backup withholding rules for reportable payments to vendors and reportable gaming (gambling) winnings to prize winners?	X	
2a Enter the number of employees reported on Form W-3, Transmittal of Wage and Tax Statements, filed for the calendar year ending with or within the year covered by this return.		
b If at least one is reported on line 2a, did the organization file all required federal employment tax returns? Note. If the sum of lines 1a and 2a is greater than 250, you may be required to e-file (see instructions).		
3a Did the organization have unrelated business gross income of \$1,000 or more during the year?	X	
b If "Yes," has it filed a Form 990-T for this year? If "No," to line 3b, provide an explanation in Schedule O.	X	
4a At any time during the calendar year, did the organization have an interest in, or a signature or other authority over, a financial account in a foreign country (such as a bank account, securities account, or other financial account)?		X
b If "Yes," enter the name of the foreign country: _____ See instructions for filing requirements for FinCEN Form 114, Report of Foreign Bank and Financial Accounts (FBAR).		
5a Was the organization a party to a prohibited tax shelter transaction at any time during the tax year?		X
b Did any taxable party notify the organization that it was or is a party to a prohibited tax shelter transaction?		X
c If "Yes," to line 5a or 5b, did the organization file Form 8886-T?		
6a Does the organization have annual gross receipts that are normally greater than \$100,000, and did the organization solicit any contributions that were not tax deductible as charitable contributions?		X
b If "Yes," did the organization include with every solicitation an express statement that such contributions or gifts were not tax deductible?		
7 Organizations that may receive deductible contributions under section 170(c).		
a Did the organization receive a payment in excess of \$75 made partly as a contribution and partly for goods and services provided to the payor?		X
b If "Yes," did the organization notify the donor of the value of the goods or services provided?		
c Did the organization sell, exchange, or otherwise dispose of tangible personal property for which it was required to file Form 8282?		X
d If "Yes," indicate the number of Forms 8282 filed during the year.		
e Did the organization receive any funds, directly or indirectly, to pay premiums on a personal benefit contract?		X
f Did the organization, during the year, pay premiums, directly or indirectly, on a personal benefit contract?		X
g If the organization received a contribution of qualified intellectual property, did the organization file Form 8899 as required?		
h If the organization received a contribution of cars, boats, airplanes, or other vehicles, did the organization file a Form 1098-C?		
8 Sponsoring organizations maintaining donor advised funds. Did a donor advised fund maintained by the sponsoring organization have excess business holdings at any time during the year?		
9 Sponsoring organizations maintaining donor advised funds.		
a Did the sponsoring organization make any taxable distributions under section 4966?		
b Did the sponsoring organization make a distribution to a donor, donor advisor, or related person?		
10 Section 501(c)(7) organizations. Enter:		
a Initiation fees and capital contributions included on Part VIII, line 12.		
b Gross receipts, included on Form 990, Part VIII, line 12, for public use of club facilities.		
11 Section 501(c)(12) organizations. Enter:		
a Gross income from members or shareholders.		
b Gross income from other sources (Do not net amounts due or paid to other sources against amounts due or received from them).		
12a Section 4947(a)(1) non-exempt charitable trusts. Is the organization filing Form 990 in lieu of Form 1041?		
b If "Yes," enter the amount of tax-exempt interest received or accrued during the year.		
13 Section 501(c)(29) qualified nonprofit health insurance issuers.		
a Is the organization licensed to issue qualified health plans in more than one state? Note. See the instructions for additional information the organization must report on Schedule O.		
b Enter the amount of reserves the organization is required to maintain by the states in which the organization is licensed to issue qualified health plans.		
c Enter the amount of reserves on hand.		
d Did the organization receive any payments for underwriting services during the tax year?		X

Part VI Governance, Management, and Disclosure For each "Yes" response to lines 2 through 7b below, and for a "No" response to line 8a, 8b, or 10b below, describe the circumstances, processes, or changes in Schedule O. See instructions.

Check if Schedule O contains a response or note to any line in this Part VI

☒**Section A. Governing Body and Management**

	Yes	No
1a Enter the number of voting members of the governing body at the end of the tax year. If there are material differences in voting rights among members of the governing body, or if the governing body delegated broad authority to an executive committee or similar committee, explain in Schedule O.	5	
1b Enter the number of voting members included in line 1a, above, who are independent.	5	
2 Did any officer, director, trustee, or key employee have a family relationship or a business relationship with any other officer, director, trustee, or key employee?		X
3 Did the organization delegate control over management duties customarily performed by or under the direct supervision of officers, directors, or trustees, or key employees to a management company or other person?	X	
4 Did the organization make any significant changes to its governing documents since the prior Form 990 was filed?		X
5 Did the organization become aware during the year of a significant diversion of the organization's assets?		X
6 Did the organization have members or stockholders?		X
7a Did the organization have members, stockholders, or other persons who had the power to elect or appoint one or more members of the governing body?		X
7b Are any governance decisions of the organization reserved to (or subject to approval by) members, stockholders, or persons other than the governing body?		X
8 Did the organization contemporaneously document the meetings held or written actions undertaken during the year by the following:		
a The governing body?	X	
b Each committee with authority to act on behalf of the governing body?		X
9 Is there any officer, director, trustee, or key employee listed in Part VII, Section A, who cannot be reached at the organization's mailing address? If "Yes," provide the names and addresses in Schedule O.		X

Section B. Policies (This Section B requests information about policies not required by the Internal Revenue Code.)

	Yes	No
10a Did the organization have local chapters, branches, or affiliates?		X
b If "Yes," did the organization have written policies and procedures governing the activities of such chapters, affiliates, and branches to ensure their operations are consistent with the organization's exempt purposes?		
11a Has the organization provided a complete copy of this Form 990 to all members of its governing body before filing the form?	X	
b Describe in Schedule O the process, if any, used by the organization to review this Form 990.		
12a Did the organization have a written conflict of interest policy? If "No," go to line 13.	X	
b Were officers, directors, or trustees, and key employees required to disclose annually interests that could give rise to conflicts?	X	
c Did the organization regularly and consistently monitor and enforce compliance with the policy? If "Yes," describe in Schedule O how this was done.	X	
13 Did the organization have a written whistleblower policy?	X	
14 Did the organization have a written document retention and destruction policy?	X	
15 Did the process for determining compensation of the following persons include a review and approval by independent persons, comparability data, and contemporaneous substantiation of the deliberation and decision?		
a The organization's CEO, Executive Director, or top management official		X
b Other officers or key employees of the organization		X
If "Yes" to line 15a or 15b, describe the process in Schedule O (see instructions).		
16a Did the organization invest in, contribute assets to, or participate in a joint venture or similar arrangement with a taxable entity during the year?		X
b If "Yes," did the organization follow a written policy or procedure requiring the organization to evaluate its participation in joint venture arrangements under applicable federal tax law, and take steps to safeguard the organization's exempt status with respect to such arrangements?		

Section C. Disclosure

17 List the states with which a copy of this Form 990 is required to be filed **NY**

18 Section 6104 requires an organization to make its Forms 1023 (or 1024 if applicable), 990, and 990-T (Section 501(c)(3)s only) available for public inspection. Indicate how you made these available. Check all that apply.
☐ Own website ☐ Another's website ☒ Upon request ☐ Other (explain in Schedule O)

19 Describe in Schedule O whether (and if so, how) the organization made its governing documents, conflict of interest policy, and financial statements available to the public during the tax year.

20 State the name, address, and telephone number of the person who possesses the organization's books and records **MARK DONAHUE - 518-745-8084**
P.O. BOX 771, GLENS FALLS, NY 12801

Part VII Compensation of Officers, Directors, Trustees, Key Employees, Highest Compensated Employees, and Independent Contractors

Check if Schedule O contains a response or note to any line in this Part VII ☐

Section A. Officers, Directors, Trustees, Key Employees, and Highest Compensated Employees

1a Complete this table for all persons required to be listed. Report compensation for the calendar year ending with or within the organization's tax year.

- List all of the organization's **current** officers, directors, trustees (whether individuals or organizations), regardless of amount of compensation. Enter -0- in columns (D), (E), and (F) if no compensation was paid.
- List all of the organization's **current** key employees, if any. See instructions for definition of "key employee."
- List the organization's five **current** highest compensated employees (other than an officer, director, trustee, or key employee) who received reportable compensation (Box 5 of Form W-2 and/or Box 7 of Form 1099-MISC) of more than \$100,000 from the organization and any related organizations.
- List all of the organization's **former** officers, key employees, and highest compensated employees who received more than \$100,000 of reportable compensation from the organization and any related organizations.
- List all of the organization's **former directors or trustees** that received, in the capacity as a former director or trustee of the organization, more than \$10,000 of reportable compensation from the organization and any related organizations.

List persons in the following order: individual trustees or directors; institutional trustees; officers; key employees; highest compensated employees; and former such persons

☐ Check this box if neither the organization nor any related organization compensated any current officer, director, or trustee

[illegible]

Part VIII Statement of RevenueCheck if Schedule O contains a response or note to any line in this Part VIII ☐

				(A) Total revenue	(B) Related or exempt function revenue	(C) Unrelated business revenue	(D) Revenue excluded from tax under sections 512-514
Contributions, Gifts, Grants and Other Similar Amounts	1 a	Federated campaigns	1a				
	b	Membership dues	1b				
	c	Fundraising events	1c				
	d	Related organizations	1d				
	e	Government grants (contributions)	1e				
	f	All other contributions, gifts, grants, and similar amounts not included above	1f	8,826.			
	g	Noncash contributions included in lines 1a-1f \$					
	h	Total. Add lines 1a-1f		8,826.			
Program Service Revenue	2 a	BUILDING RENTAL	Business Code 531120	782,262.	635,184.	147,078.	
	b						
	c						
	d						
	e						
	f	All other program service revenue					
	g	Total. Add lines 2a-2f		782,262.			
	Other Revenue	3	Investment income (including dividends, interest, and other similar amounts)				
4		Income from investment of tax-exempt bond proceeds					
5		Royalties					
6 a		Gross rents	(i) Real (ii) Personal				
b		Less: rental expenses					
c		Rental income or (loss)					
d		Net rental income or (loss)					
7 a		Gross amount from sales of assets other than inventory	(i) Securities (ii) Other				
b		Less: cost or other basis and sales expenses					
c		Gain or (loss)					
d		Net gain or (loss)		1,148,373.		1,148,373.	
8 a		Gross income from fundraising events (not including \$ _____ of contributions reported on line 1c) See Part IV, line 18	a				
b		Less: direct expenses	b				
c		Net income or (loss) from fundraising events					
9 a		Gross income from gaming activities See Part IV, line 19	a				
b		Less: direct expenses	b				
c		Net income or (loss) from gaming activities					
10 a		Gross sales of inventory, less returns and allowances	a	531,545.			
b		Less: cost of goods sold	b	320,260.			
c		Net income or (loss) from sales of inventory		211,285.	211,285.		
Miscellaneous Revenue			Business Code				
11 a							
b							
c							
d	All other revenue						
e	Total. Add lines 11a-11d						
12	Total revenue. See instructions.		2,150,746.	846,469.	1,295,451.	0.	

Part IX Statement of Functional Expenses

Section 501(c)(3) and 501(c)(4) organizations must complete all columns. All other organizations must complete column (A).

Check if Schedule O contains a response or note to any line in this Part IX ☐

Do not include amounts reported on lines 6b, 7b, 8b, 9b, and 10b of Part VIII.	(A) Total expenses	(B) Program service expenses	(C) Management and general expenses	(D) Fundraising expenses
1 Grants and other assistance to domestic organizations and domestic governments. See Part IV, line 21				
2 Grants and other assistance to domestic individuals. See Part IV, line 22				
3 Grants and other assistance to foreign organizations, foreign governments, and foreign individuals. See Part IV, lines 15 and 16				
4 Benefits paid to or for members				
5 Compensation of current officers, directors, trustees, and key employees				
6 Compensation not included above, to disqualified persons (as defined under section 4958(f)(1)) and persons described in section 4958(c)(3)(B)				
7 Other salaries and wages				
8 Pension plan accruals and contributions (include section 401(k) and 403(b) employer contributions)				
9 Other employee benefits				
10 Payroll taxes				
11 Fees for services (non-employees):				
a Management	319,751.	223,219.	96,532.	
b Legal	1,905.		1,905.	
c Accounting	20,587.		20,587.	
d Lobbying				
e Professional fundraising services. See Part IV, line 17				
f Investment management fees				
g Other. (If line 11g amount exceeds 10% of line 25, column (A) amount, list line 11g expenses on Sch O.)				
12 Advertising and promotion	1,439.	1,439.		
13 Office expenses	3,862.	3,862.		
14 Information technology				
15 Royalties	21,170.	21,170.		
16 Occupancy	143,467.	143,467.		
17 Travel				
18 Payments of travel or entertainment expenses for any federal, state, or local public officials				
19 Conferences, conventions, and meetings				
20 Interest	39,338.	39,338.		
21 Payments to affiliates				
22 Depreciation, depletion, and amortization	224,019.	224,019.		
23 Insurance	37,088.	37,088.		
24 Other expenses. Itemize expenses not covered above. (List miscellaneous expenses in line 24e. If line 24e amount exceeds 10% of line 25, column (A) amount, list line 24e expenses on Schedule O.)				
a CONTRIBUTIONS	102,500.	102,500.		
b REPAIRS AND MAINTENANCE	54,904.	54,904.		
c BANK SERVICE CHARGES	7,683.	7,683.		
d DUES, FEES, AND SUBSCRIPTIONS	1,546.	1,546.		
e All other expenses	572.	572.		
25 Total functional expenses. Add lines 1 through 24e	979,831.	860,807.	119,024.	0.
26 Joint costs. Complete this line only if the organization reported in column (B) joint costs from a combined educational campaign and fundraising solicitation.				

Check here ☐ if following SOP 98-2 (ASC 958-720)

Part X Balance SheetCheck if Schedule O contains a response or note to any line in this Part X ☐

		(A) Beginning of year		(B) End of year
Assets	1 Cash - non-interest-bearing	91,415.	1	68,242.
	2 Savings and temporary cash investments		2	1,672,482.
	3 Pledges and grants receivable, net		3	
	4 Accounts receivable, net	622,546.	4	896,168.
	5 Loans and other receivables from current and former officers, directors, trustees, key employees, and highest compensated employees. Complete Part II of Schedule L		5	
	6 Loans and other receivables from other disqualified persons (as defined under section 4958(f)(1)), persons described in section 4958(c)(3)(B), and contributing employers and sponsoring organizations of section 501(c)(9) voluntary employees' beneficiary organizations (see instr). Complete Part II of Sch L		6	
	7 Notes and loans receivable, net		7	
	8 Inventories for sale or use	89,404.	8	89,501.
	9 Prepaid expenses and deferred charges	26,524.	9	24,397.
	10a Land, buildings, and equipment: cost or other basis. Complete Part VI of Schedule D	10a 5,785,398.		
	b Less: accumulated depreciation	10b 3,756,244.	10c 2,745,745.	2,029,154.
	11 Investments - publicly traded securities		11	
	12 Investments - other securities. See Part IV, line 11	103,530.	12	103,530.
	13 Investments - program-related. See Part IV, line 11		13	
	14 Intangible assets		14	
	15 Other assets. See Part IV, line 11		15	
16 Total assets. Add lines 1 through 15 (must equal line 34)	3,679,164.	16	4,883,474.	
Liabilities	17 Accounts payable and accrued expenses	73,879.	17	42,611.
	18 Grants payable		18	
	19 Deferred revenue		19	
	20 Tax-exempt bond liabilities		20	
	21 Escrow or custodial account liability. Complete Part IV of Schedule D		21	
	22 Loans and other payables to current and former officers, directors, trustees, key employees, highest compensated employees, and disqualified persons. Complete Part II of Schedule L		22	
	23 Secured mortgages and notes payable to unrelated third parties	787,143.	23	754,466.
	24 Unsecured notes and loans payable to unrelated third parties		24	
	25 Other liabilities (including federal income tax, payables to related third parties, and other liabilities not included on lines 17-24). Complete Part X of Schedule D	222,579.	25	319,919.
	26 Total liabilities. Add lines 17 through 25	1,083,601.	26	1,116,996.
Net Assets or Fund Balances	Organizations that follow SFAS 117 (ASC 958), check here <input checked="" type="checkbox"/> and complete lines 27 through 29, and lines 33 and 34.			
	27 Unrestricted net assets	2,595,563.	27	3,766,478.
	28 Temporarily restricted net assets		28	
	29 Permanently restricted net assets		29	
	Organizations that do not follow SFAS 117 (ASC 958), check here <input type="checkbox"/> and complete lines 30 through 34.			
	30 Capital stock or trust principal, or current funds		30	
	31 Paid-in or capital surplus, or land, building, or equipment fund		31	
	32 Retained earnings, endowment, accumulated income, or other funds	2,595,563.	32	3,766,478.
33 Total net assets or fund balances	3,679,164.	33	4,883,474.	
34 Total liabilities and net assets/fund balances		34		

Form 990 (2017)

Part XI Reconciliation of Net AssetsCheck if Schedule O contains a response or note to any line in this Part XI ☐

1	Total revenue (must equal Part VIII, column (A), line 12)	1	2,150,746.
2	Total expenses (must equal Part IX, column (A), line 25)	2	979,831.
3	Revenue less expenses Subtract line 2 from line 1	3	1,170,915.
4	Net assets or fund balances at beginning of year (must equal Part X, line 33, column (A))	4	2,595,563.
5	Net unrealized gains (losses) on investments	5	
6	Donated services and use of facilities	6	
7	Investment expenses	7	
8	Prior period adjustments	8	
9	Other changes in net assets or fund balances (explain in Schedule O)	9	0.
10	Net assets or fund balances at end of year Combine lines 3 through 9 (must equal Part X, line 33, column (B))	10	3,766,478.

Part XII Financial Statements and ReportingCheck if Schedule O contains a response or note to any line in this Part XII ☒

	Yes	No
1 Accounting method used to prepare the Form 990: <input type="checkbox"/> Cash <input checked="" type="checkbox"/> Accrual <input type="checkbox"/> Other _____ If the organization changed its method of accounting from a prior year or checked "Other," explain in Schedule O		
2a Were the organization's financial statements compiled or reviewed by an independent accountant? If "Yes," check a box below to indicate whether the financial statements for the year were compiled or reviewed on a separate basis, consolidated basis, or both: <input type="checkbox"/> Separate basis <input type="checkbox"/> Consolidated basis <input type="checkbox"/> Both consolidated and separate basis		X
b Were the organization's financial statements audited by an independent accountant? If "Yes," check a box below to indicate whether the financial statements for the year were audited on a separate basis, consolidated basis, or both: <input type="checkbox"/> Separate basis <input checked="" type="checkbox"/> Consolidated basis <input type="checkbox"/> Both consolidated and separate basis	X	
c If "Yes" to line 2a or 2b, does the organization have a committee that assumes responsibility for oversight of the audit, review, or compilation of its financial statements and selection of an independent accountant? If the organization changed either its oversight process or selection process during the tax year, explain in Schedule O	X	
3a As a result of a federal award, was the organization required to undergo an audit or audits as set forth in the Single Audit Act and OMB Circular A-133?		X
b If "Yes," did the organization undergo the required audit or audits? If the organization did not undergo the required audit or audits, explain why in Schedule O and describe any steps taken to undergo such audits		

Form 990 (2017)

SCHEDULE A
(Form 990 or 990-EZ)

Department of the Treasury
Internal Revenue Service

Public Charity Status and Public Support
Complete if the organization is a section 501(c)(3) organization or a section 4947(a)(1) nonexempt charitable trust.
▶ Attach to Form 990 or Form 990-EZ.
▶ Go to www.irs.gov/Form990 for instructions and the latest information.

OMB No 1545-0047

2017

Open to Public
Inspection

Name of the organization

COMMUNITY WORKSHOP RESOURCES, CORP.

Employer identification number

22-2411228

Part I Reason for Public Charity Status (All organizations must complete this part.) See instructions

The organization is not a private foundation because it is: (For lines 1 through 12, check only one box.)

- 1 ☐ A church, convention of churches, or association of churches described in **section 170(b)(1)(A)(i).**
- 2 ☐ A school described in **section 170(b)(1)(A)(ii).** (Attach Schedule E (Form 990 or 990-EZ))
- 3 ☐ A hospital or a cooperative hospital service organization described in **section 170(b)(1)(A)(iii).**
- 4 ☐ A medical research organization operated in conjunction with a hospital described in **section 170(b)(1)(A)(iii).** Enter the hospital's name, city, and state _____
- 5 ☐ An organization operated for the benefit of a college or university owned or operated by a governmental unit described in **section 170(b)(1)(A)(iv).** (Complete Part II)
- 6 ☐ A federal, state, or local government or governmental unit described in **section 170(b)(1)(A)(v).**
- 7 ☐ An organization that normally receives a substantial part of its support from a governmental unit or from the general public described in **section 170(b)(1)(A)(vi).** (Complete Part II)
- 8 ☐ A community trust described in **section 170(b)(1)(A)(vi).** (Complete Part II)
- 9 ☐ An agricultural research organization described in **section 170(b)(1)(A)(ix)** operated in conjunction with a land-grant college or university or a non-land-grant college of agriculture (see instructions) Enter the name, city, and state of the college or university: _____
- 10 ☒ An organization that normally receives: (1) more than 33 1/3% of its support from contributions, membership fees, and gross receipts from activities related to its exempt functions - subject to certain exceptions, and (2) no more than 33 1/3% of its support from gross investment income and unrelated business taxable income (less section 511 tax) from businesses acquired by the organization after June 30, 1975 See **section 509(a)(2).** (Complete Part III)
- 11 ☐ An organization organized and operated exclusively to test for public safety See **section 509(a)(4).**
- 12 ☐ An organization organized and operated exclusively for the benefit of, to perform the functions of, or to carry out the purposes of one or more publicly supported organizations described in **section 509(a)(1)** or **section 509(a)(2)** See **section 509(a)(3).** Check the box in lines 12a through 12d that describes the type of supporting organization and complete lines 12e, 12f, and 12g
- a ☐ **Type I.** A supporting organization operated, supervised, or controlled by its supported organization(s), typically by giving the supported organization(s) the power to regularly appoint or elect a majority of the directors or trustees of the supporting organization **You must complete Part IV, Sections A and B.**
- b ☐ **Type II.** A supporting organization supervised or controlled in connection with its supported organization(s), by having control or management of the supporting organization vested in the same persons that control or manage the supported organization(s) **You must complete Part IV, Sections A and C.**
- c ☐ **Type III functionally integrated.** A supporting organization operated in connection with, and functionally integrated with, its supported organization(s) (see instructions) **You must complete Part IV, Sections A, D, and E.**
- d ☐ **Type III non-functionally integrated.** A supporting organization operated in connection with its supported organization(s) that is not functionally integrated. The organization generally must satisfy a distribution requirement and an attentiveness requirement (see instructions) **You must complete Part IV, Sections A and D, and Part V.**
- e ☐ Check this box if the organization received a written determination from the IRS that it is a Type I, Type II, Type III functionally integrated, or Type III non-functionally integrated supporting organization
- f Enter the number of supported organizations
- g Provide the following information about the supported organization(s)

(i) Name of supported organization	(ii) EIN	(iii) Type of organization (described on lines 1-10 above (see instructions))	(iv) Is the organization listed in your governing document?		(v) Amount of monetary support (see instructions)	(vi) Amount of other support (see instructions)
			Yes	No		
Total						

LHA For Paperwork Reduction Act Notice, see the Instructions for Form 990 or 990-EZ. 732021 10-06-17 Schedule A (Form 990 or 990-EZ) 2017

Part II Support Schedule for Organizations Described in Sections 170(b)(1)(A)(iv) and 170(b)(1)(A)(vi)

(Complete only if you checked the box on line 5, 7, or 8 of Part I or if the organization failed to qualify under Part III. If the organization fails to qualify under the tests listed below, please complete Part III.)

Section A. Public Support

Calendar year (or fiscal year beginning in) ►	(a) 2013	(b) 2014	(c) 2015	(d) 2016	(e) 2017	(f) Total
1 Gifts, grants, contributions, and membership fees received (Do not include any "unusual grants.")						
2 Tax revenues levied for the organization's benefit and either paid to or expended on its behalf						
3 The value of services or facilities furnished by a governmental unit to the organization without charge						
4 Total. Add lines 1 through 3						
5 The portion of total contributions by each person (other than a governmental unit or publicly supported organization) included on line 1 that exceeds 2% of the amount shown on line 11, column (f)						
6 Public support. Subtract line 5 from line 4						

Section B. Total Support

Calendar year (or fiscal year beginning in) ►	(a) 2013	(b) 2014	(c) 2015	(d) 2016	(e) 2017	(f) Total
7 Amounts from line 4						
8 Gross income from interest, dividends, payments received on securities loans, rents, royalties, and income from similar sources						
9 Net income from unrelated business activities, whether or not the business is regularly carried on						
10 Other income. Do not include gain or loss from the sale of capital assets (Explain in Part VI.)						
11 Total support. Add lines 7 through 10						
12 Gross receipts from related activities, etc. (see instructions)					12	
13 First five years. If the Form 990 is for the organization's first, second, third, fourth, or fifth tax year as a section 501(c)(3) organization, check this box and stop here ► <input type="checkbox"/>						

Section C. Computation of Public Support Percentage

14 Public support percentage for 2017 (line 6, column (f) divided by line 11, column (f))	14	%
15 Public support percentage from 2016 Schedule A, Part II, line 14	15	%
16a 33 1/3% support test - 2017. If the organization did not check the box on line 13, and line 14 is 33 1/3% or more, check this box and stop here. The organization qualifies as a publicly supported organization ► <input type="checkbox"/>		
b 33 1/3% support test - 2016. If the organization did not check a box on line 13 or 16a, and line 15 is 33 1/3% or more, check this box and stop here. The organization qualifies as a publicly supported organization ► <input type="checkbox"/>		
17a 10% -facts-and-circumstances test - 2017. If the organization did not check a box on line 13, 16a, or 16b, and line 14 is 10% or more, and if the organization meets the "facts-and-circumstances" test, check this box and stop here. Explain in Part VI how the organization meets the "facts-and-circumstances" test. The organization qualifies as a publicly supported organization ► <input type="checkbox"/>		
b 10% -facts-and-circumstances test - 2016. If the organization did not check a box on line 13, 16a, 16b, or 17a, and line 15 is 10% or more, and if the organization meets the "facts-and-circumstances" test, check this box and stop here. Explain in Part VI how the organization meets the "facts-and-circumstances" test. The organization qualifies as a publicly supported organization ► <input type="checkbox"/>		
18 Private foundation. If the organization did not check a box on line 13, 16a, 16b, 17a, or 17b, check this box and see instructions ► <input type="checkbox"/>		

Schedule A (Form 990 or 990-EZ) 2017

Part III Support Schedule for Organizations Described in Section 509(a)(2)

(Complete only if you checked the box on line 10 of Part I or if the organization failed to qualify under Part II. If the organization fails to qualify under the tests listed below, please complete Part II.)

Section A. Public Support

Calendar year (or fiscal year beginning in) ►	(a) 2013	(b) 2014	(c) 2015	(d) 2016	(e) 2017	(f) Total
1 Gifts, grants, contributions, and membership fees received (Do not include any "unusual grants.")			27,944.	81,957.	8,826.	118,727.
2 Gross receipts from admissions, merchandise sold or services performed, or facilities furnished in any activity that is related to the organization's tax-exempt purpose	582,570.	582,717.	582,717.	701,633.	1,166,729.	3,616,366.
3 Gross receipts from activities that are not an unrelated trade or business under section 513						
4 Tax revenues levied for the organization's benefit and either paid to or expended on its behalf						
5 The value of services or facilities furnished by a governmental unit to the organization without charge						

Part IV, Supporting Organizations

(Complete only if you checked a box in line 12 on Part I. If you checked 12a of Part I, complete Sections A and B. If you checked 12b of Part I, complete Sections A and C. If you checked 12c of Part I, complete Sections A, D, and E. If you checked 12d of Part I, complete Sections A and D, and complete Part V.)

Section A. All Supporting Organizations

	Yes	No
1 Are all of the organization's supported organizations listed by name in the organization's governing documents? If "No," describe in Part VI how the supported organizations are designated. If designated by class or purpose, describe the designation. If historic and continuing relationship, explain.	<input type="checkbox"/>	<input type="checkbox"/>
2 Did the organization have any supported organization that does not have an IRS determination of status under section 509(a)(1) or (2)? If "Yes," explain in Part VI how the organization determined that the supported organization was described in section 509(a)(1) or (2).	<input type="checkbox"/>	<input type="checkbox"/>
3a Did the organization have a supported organization described in section 501(c)(4), (5), or (6)? If "Yes," answer (b) and (c) below.	<input type="checkbox"/>	<input type="checkbox"/>
b Did the organization confirm that each supported organization qualified under section 501(c)(4), (5), or (6) and satisfied the public support tests under section 509(a)(2)? If "Yes," describe in Part VI when and how the organization made the determination.	<input type="checkbox"/>	<input type="checkbox"/>
c Did the organization ensure that all support to such organizations was used exclusively for section 170(c)(2)(B) purposes? If "Yes," explain in Part VI what controls the organization put in place to ensure such use.	<input type="checkbox"/>	<input type="checkbox"/>
4a Was any supported organization not organized in the United States ("foreign supported organization")? If "Yes," and if you checked 12a or 12b in Part I, answer (b) and (c) below.	<input type="checkbox"/>	<input type="checkbox"/>
b Did the organization have ultimate control and discretion in deciding whether to make grants to the foreign supported organization? If "Yes," describe in Part VI how the organization had such control and discretion despite being controlled or supervised by or in connection with its supported organizations.	<input type="checkbox"/>	<input type="checkbox"/>
c Did the organization support any foreign supported organization that does not have an IRS determination under sections 501(c)(3) and 509(a)(1) or (2)? If "Yes," explain in Part VI what controls the organization used to ensure that all support to the foreign supported organization was used exclusively for section 170(c)(2)(B) purposes.	<input type="checkbox"/>	<input type="checkbox"/>
5a Did the organization add, substitute, or remove any supported organizations during the tax year? If "Yes," answer (b) and (c) below (if applicable). Also, provide detail in Part VI , including (i) the names and EIN numbers of the supported organizations added, substituted, or removed, (ii) the reasons for each such action, (iii) the authority under the organization's organizing document authorizing such action, and (iv) how the action was accomplished (such as by amendment to the organizing document).	<input type="checkbox"/>	<input type="checkbox"/>
b Type I or Type II only. Was any added or substituted supported organization part of a class already designated in the organization's organizing document?	<input type="checkbox"/>	<input type="checkbox"/>
c Substitutions only. Was the substitution the result of an event beyond the organization's control?	<input type="checkbox"/>	<input type="checkbox"/>
6 Did the organization provide support (whether in the form of grants or the provision of services or facilities) to anyone other than (i) its supported organizations, (ii) individuals that are part of the charitable class benefited by one or more of its supported organizations, or (iii) other supporting organizations that also support or benefit one or more of the filing organization's supported organizations? If "Yes," provide detail in Part VI .	<input type="checkbox"/>	<input type="checkbox"/>
7 Did the organization provide a grant, loan, compensation, or other similar payment to a substantial contributor (defined in section 4958(c)(3)(C)), a family member of a substantial contributor, or a 35% controlled entity with regard to a substantial contributor? If "Yes," complete Part I of Schedule L (Form 990 or 990-EZ).	<input type="checkbox"/>	<input type="checkbox"/>
8 Did the organization make a loan to a disqualified person (as defined in section 4958) not described in line 7? If "Yes," complete Part I of Schedule L (Form 990 or 990-EZ).	<input type="checkbox"/>	<input type="checkbox"/>
9a Was the organization controlled directly or indirectly at any time during the tax year by one or more disqualified persons as defined in section 4946 (other than foundation managers and organizations described in section 509(a)(1) or (2))? If "Yes," provide detail in Part VI .	<input type="checkbox"/>	<input type="checkbox"/>
b Did one or more disqualified persons (as defined in line 9a) hold a controlling interest in any entity in which the supporting organization had an interest? If "Yes," provide detail in Part VI .	<input type="checkbox"/>	<input type="checkbox"/>
c Did a disqualified person (as defined in line 9a) have an ownership interest in, or derive any personal benefit from, assets in which the supporting organization also had an interest? If "Yes," provide detail in Part VI .	<input type="checkbox"/>	<input type="checkbox"/>
10a Was the organization subject to the excess business holdings rules of section 4943 because of section 4943(f) (regarding certain Type II supporting organizations, and all Type III non-functionally integrated supporting organizations)? If "Yes," answer 10b below.	<input type="checkbox"/>	<input type="checkbox"/>
b Did the organization have any excess business holdings in the tax year? (Use Schedule C, Form 4720, to determine whether the organization had excess business holdings.)	<input type="checkbox"/>	<input type="checkbox"/>

Part IV. Supporting Organizations (continued)

- 11 Has the organization accepted a gift or contribution from any of the following persons?
- a A person who directly or indirectly controls, either alone or together with persons described in (b) and (c) below, the governing body of a supported organization?
- b A family member of a person described in (a) above?
- c A 35% controlled entity of a person described in (a) or (b) above? If "Yes" to a, b, or c, provide detail in Part VI.

	Yes	No
11a		
11b		
11c		

Section B. Type I Supporting Organizations

- 1 Did the directors, trustees, or membership of one or more supported organizations have the power to regularly appoint or elect at least a majority of the organization's directors or trustees at all times during the tax year? If "No," describe in Part VI how the supported organization(s) effectively operated, supervised, or controlled the organization's activities. If the organization had more than one supported organization, describe how the powers to appoint and/or remove directors or trustees were allocated among the supported organizations and what conditions or restrictions, if any, applied to such powers during the tax year
- 2 Did the organization operate for the benefit of any supported organization other than the supported organization(s) that operated, supervised, or controlled the supporting organization? If "Yes," explain in Part VI how providing such benefit carried out the purposes of the supported organization(s) that operated, supervised, or controlled the supporting organization

	Yes	No
1		
2		

Section C. Type II Supporting Organizations

- 1 Were a majority of the organization's directors or trustees during the tax year also a majority of the directors or trustees of each of the organization's supported organization(s)? If "No," describe in Part VI how control or management of the supporting organization was vested in the same persons that controlled or managed the supported organization(s)

	Yes	No
1		

Section D. All Type III Supporting Organizations

- 1 Did the organization provide to each of its supported organizations, by the last day of the fifth month of the organization's tax year, (i) a written notice describing the type and amount of support provided during the prior tax year, (ii) a copy of the Form 990 that was most recently filed as of the date of notification, and (iii) copies of the organization's governing documents in effect on the date of notification, to the extent not previously provided?
- 2 Were any of the organization's officers, directors, or trustees either (i) appointed or elected by the supported organization(s) or (ii) serving on the governing body of a supported organization? If "No," explain in Part VI how the organization maintained a close and continuous working relationship with the supported organization(s)
- 3 By reason of the relationship described in (2), did the organization's supported organizations have a significant voice in the organization's investment policies and in directing the use of the organization's income or assets at all times during the tax year? If "Yes," describe in Part VI the role the organization's supported organizations played in this regard

	Yes	No
1		
2		
3		

Section E. Type III Functionally Integrated Supporting Organizations

- 1 Check the box next to the method that the organization used to satisfy the Integral Part Test during the year (see instructions).
- a ☐ The organization satisfied the Activities Test. Complete line 2 below
- b ☐ The organization is the parent of each of its supported organizations. Complete line 3 below
- c ☐ The organization supported a governmental entity. Describe in Part VI how you supported a government entity (see instructions)

2 Activities Test. Answer (a) and (b) below.

- a Did substantially all of the organization's activities during the tax year directly further the exempt purposes of the supported organization(s) to which the organization was responsive? If "Yes," then in Part VI identify those supported organizations and explain how these activities directly furthered their exempt purposes, how the organization was responsive to those supported organizations, and how the organization determined that these activities constituted substantially all of its activities
- b Did the activities described in (a) constitute activities that, but for the organization's involvement, one or more of the organization's supported organization(s) would have been engaged in? If "Yes," explain in Part VI the reasons for the organization's position that its supported organization(s) would have engaged in these activities but for the organization's involvement
- 3 Parent of Supported Organizations. Answer (a) and (b) below.
- a Did the organization have the power to regularly appoint or elect a majority of the officers, directors, or trustees of each of the supported organizations? Provide details in Part VI.
- b Did the organization exercise a substantial degree of direction over the policies, programs, and activities of each of its supported organizations? If "Yes," describe in Part VI the role played by the organization in this regard

	Yes	No
2a		
2b		
3a		
3b		

Part V **Type III Non-Functionally Integrated 509(a)(3) Supporting Organizations**

- 1** ☐ Check here if the organization satisfied the Integral Part Test as a qualifying trust on Nov. 20, 1970 (explain in Part VI.) **See instructions.** All other Type III non-functionally integrated supporting organizations must complete Sections A through E.

Section A - Adjusted Net Income		(A) Prior Year	(B) Current Year (optional)
1 Net short-term capital gain	1		
2 Recoveries of prior-year distributions	2		
3 Other gross income (see instructions)	3		
4 Add lines 1 through 3	4		
5 Depreciation and depletion	5		
6 Portion of operating expenses paid or incurred for production or collection of gross income or for management, conservation, or maintenance of property held for production of income (see instructions)	6		

Part V. Type III Non-Functionally Integrated 509(a)(3) Supporting Organizations (continued)

Section D - Distributions			Current Year
1	Amounts paid to supported organizations to accomplish exempt purposes		
2	Amounts paid to perform activity that directly furthers exempt purposes of supported organizations, in excess of income from activity		
3	Administrative expenses paid to accomplish exempt purposes of supported organizations		
4	Amounts paid to acquire exempt-use assets		
5	Qualified set-aside amounts (prior IRS approval required)		
6	Other distributions (describe in Part VI) See instructions		
7	Total annual distributions. Add lines 1 through 6		
8	Distributions to attentive supported organizations to which the organization is responsive (provide details in Part VI) See instructions		
9	Distributable amount for 2017 from Section C, line 6		
10	Line 8 amount divided by line 9 amount		
Section E - Distribution Allocations (see instructions)		(i) Excess Distributions	(ii) Underdistributions
			(iii) Distributable

Part VI

Supplemental Information. Provide the explanations required by Part II, line 10, Part II, line 17a or 17b, Part III, line 12, Part IV, Section A, lines 1, 2, 3b, 3c, 4b, 4c, 5a, 6, 9a, 9b, 9c, 11a, 11b, and 11c; Part IV, Section B, lines 1 and 2, Part IV, Section C, line 1; Part IV, Section D, lines 2 and 3; Part IV, Section E, lines 1c, 2a, 2b, 3a, and 3b, Part V, line 1, Part V, Section B, line 1e, Part V, Section D, lines 5, 6, and 8, and Part V, Section E, lines 2, 5, and 6. Also complete this part for any additional information (See instructions.)

SCHEDULE D
(Form 990)Department of the Treasury
Internal Revenue Service**Supplemental Financial Statements**▶ Complete if the organization answered "Yes" on Form 990,
Part IV, line 6, 7, 8, 9, 10, 11a, 11b, 11c, 11d, 11e, 11f, 12a, or 12b.
▶ Attach to Form 990.▶ Go to www.irs.gov/Form990 for instructions and the latest information.

OMB No 1545-0047

2017Open to Public
Inspection

Name of the organization

COMMUNITY WORKSHOP RESOURCES, CORP.

Employer identification number

22-2411228

Part I Organizations Maintaining Donor Advised Funds or Other Similar Funds or Accounts. Complete if the
organization answered "Yes" on Form 990, Part IV, line 6

	(a) Donor advised funds	(b) Funds and other accounts
1 Total number at end of year		
2 Aggregate value of contributions to (during year)		
3 Aggregate value of grants from (during year)		
4 Aggregate value at end of year		
5 Did the organization inform all donors and donor advisors in writing that the assets held in donor advised funds are the organization's property, subject to the organization's exclusive legal control?		<input type="checkbox"/> Yes <input type="checkbox"/> No
6 Did the organization inform all grantees, donors, and donor advisors in writing that grant funds can be used only for charitable purposes and not for the benefit of the donor or donor advisor, or for any other purpose conferring impermissible private benefit?		<input type="checkbox"/> Yes <input type="checkbox"/> No

Part II Conservation Easements. Complete if the organization answered "Yes" on Form 990, Part IV, line 7

1 Purpose(s) of conservation easements held by the organization (check all that apply)

<input type="checkbox"/> Preservation of land for public use (e.g., recreation or education)	<input type="checkbox"/> Preservation of a historically important land area
<input type="checkbox"/> Protection of natural habitat	<input type="checkbox"/> Preservation of a certified historic structure
<input type="checkbox"/> Preservation of open space	

2 Complete lines 2a through 2d if the organization held a qualified conservation contribution in the form of a conservation easement on the last day of the tax year

	Held at the End of the Tax Year
a Total number of conservation easements	2a
b Total acreage restricted by conservation easements	2b
c Number of conservation easements on a certified historic structure included in (a)	2c
d Number of conservation easements included in (c) acquired after 7/25/06, and not on a historic structure listed in the National Register	2d

3 Number of conservation easements modified, transferred, released, extinguished, or terminated by the organization during the tax year ▶ _____

4 Number of states where property subject to conservation easement is located ▶ _____

5 Does the organization have a written policy regarding the periodic monitoring, inspection, handling of violations, and enforcement of the conservation easements it holds? ☐ Yes ☐ No

6 Staff and volunteer hours devoted to monitoring, inspecting, handling of violations, and enforcing conservation easements during the year ▶ _____

7 Amount of expenses incurred in monitoring, inspecting, handling of violations, and enforcing conservation easements during the year ▶ \$ _____

8 Does each conservation easement reported on line 2(d) above satisfy the requirements of section 170(h)(4)(B)(i) and section 170(h)(4)(B)(ii)? ☐ Yes ☐ No

9 In Part XIII, describe how the organization reports conservation easements in its revenue and expense statement, and balance sheet, and include, if applicable, the text of the footnote to the organization's financial statements that describes the organization's accounting for conservation easements

Part III Organizations Maintaining Collections of Art, Historical Treasures, or Other Similar Assets.

Complete if the organization answered "Yes" on Form 990, Part IV, line 8

1a If the organization elected, as permitted under SFAS 116 (ASC 958), not to report in its revenue statement and balance sheet works of art, historical treasures, or other similar assets held for public exhibition, education, or research in furtherance of public service, provide, in Part XIII, the text of the footnote to its financial statements that describes these items

b If the organization elected, as permitted under SFAS 116 (ASC 958), to report in its revenue statement and balance sheet works of art, historical treasures, or other similar assets held for public exhibition, education, or research in furtherance of public service, provide the following amounts relating to these items:

(i) Revenue included on Form 990, Part VIII, line 1	▶ \$ _____
(ii) Assets included in Form 990, Part X	▶ \$ _____

c If the organization received or held works of art, historical treasures, or other similar assets for financial gain, provide

Part III Organizations Maintaining Collections of Art, Historical Treasures, or Other Similar Assets (continued)

3 Using the organization's acquisition, accession, and other records, check any of the following that are a significant use of its collection items (check all that apply):

- a ☐ Public exhibition
 b ☐ Scholarly research
 c ☐ Preservation for future generations

- d ☐ Loan or exchange programs
 e ☐ Other _____

4 Provide a description of the organization's collections and explain how they further the organization's exempt purpose in Part XIII

5 During the year, did the organization solicit or receive donations of art, historical treasures, or other similar assets

to be sold to raise funds rather than to be maintained as part of the organization's collection?

☐ Yes ☐ No

Part IV Escrow and Custodial Arrangements. Complete if the organization answered "Yes" on Form 990, Part IV, line 9, or reported an amount on Form 990, Part X, line 21

1a Is the organization an agent, trustee, custodian or other intermediary for contributions or other assets not included on Form 990, Part X?

☐ Yes ☐ No

b If "Yes," explain the arrangement in Part XIII and complete the following table.

- c Beginning balance
 d Additions during the year
 e Distributions during the year
 f Ending balance

	Amount
1c	
1d	
1e	
1f	

2a Did the organization include an amount on Form 990, Part X, line 21, for escrow or custodial account liability?

☐ Yes ☐ No

b If "Yes," explain the arrangement in Part XIII. Check here if the explanation has been provided on Part XIII ☐

Part V Endowment Funds. Complete if the organization answered "Yes" on Form 990, Part IV, line 10

	(a) Current year	(b) Prior year	(c) Two years back	(d) Three years back	(e) Four years back
1a Beginning of year balance					
b Contributions					
c Net investment earnings, gains, and losses					
d Grants or scholarships					
e Other expenditures for facilities and programs					
f Administrative expenses					
g End of year balance					

2 Provide the estimated percentage of the current year end balance (line 1g, column (a)) held as

a Board designated or quasi-endowment ▶ _____ %

b Permanent endowment ▶ _____ %

c Temporarily restricted endowment ▶ _____ %

The percentages on lines 2a, 2b, and 2c should equal 100%.

3a Are there endowment funds not in the possession of the organization that are held and administered for the organization by

- (i) unrelated organizations
 (ii) related organizations

	Yes	No
3a(i)		
3a(ii)		
3b		

b If "Yes" on line 3a(ii), are the related organizations listed as required on Schedule R?

4 Describe in Part XIII the intended uses of the organization's endowment funds

Part VI Land, Buildings, and Equipment.

Complete if the organization answered "Yes" on Form 990, Part IV, line 11a. See Form 990, Part X, line 10

Description of property	(a) Cost or other basis (investment)	(b) Cost or other basis (other)	(c) Accumulated depreciation	(d) Book value
1a Land		323,650.		323,650.
b Buildings		5,461,748.	3,756,244.	1,705,504.
c Leasehold improvements				
d Equipment				
e Other				
Total. Add lines 1a through 1e. (Column (d) must equal Form 990, Part X, column (B), line 10c.)				2,029,154.

Schedule D (Form 990) 2017

Part VII Investments - Other Securities.

Complete if the organization answered "Yes" on Form 990, Part IV, line 11b. See Form 990, Part X, line 12.

(a) Description of security or category (including name of security)	(b) Book value	(c) Method of valuation: Cost or end-of-year market value
(1) Financial derivatives		
(2) Closely-held equity interests		
(3) Other		
(A)		
(B)		
(C)		
(D)		
(E)		
(F)		
(G)		
(H)		
Total. (Col. (b) must equal Form 990, Part X, col. (B) line 12.) ▶		

Part VIII Investments - Program Related.

Complete if the organization answered "Yes" on Form 990, Part IV, line 11c. See Form 990, Part X, line 13.

(a) Description of investment	(b) Book value	(c) Method of valuation: Cost or end-of-year market value
(1)		
(2)		
(3)		
(4)		
(5)		
(6)		
(7)		
(8)		
(9)		
Total. (Col. (b) must equal Form 990, Part X, col. (B) line 13.) ▶		

Part IX Other Assets.

Complete if the organization answered "Yes" on Form 990, Part IV, line 11d. See Form 990, Part X, line 15.

(a) Description	(b) Book value
(1)	
(2)	
(3)	
(4)	
(5)	
(6)	
(7)	
(8)	
(9)	

Part XI Reconciliation of Revenue per Audited Financial Statements With Revenue per Return.

Complete if the organization answered "Yes" on Form 990, Part IV, line 12a

1	Total revenue, gains, and other support per audited financial statements	1	2,471,006.
2	Amounts included on line 1 but not on Form 990, Part VIII, line 12		
a	Net unrealized gains (losses) on investments	2a	
b	Donated services and use of facilities	2b	
c	Recoveries of prior year grants	2c	
d	Other (Describe in Part XIII.)	2d	320,260.
e	Add lines 2a through 2d	2e	320,260.
3	Subtract line 2e from line 1	3	2,150,746.
4	Amounts included on Form 990, Part VIII, line 12, but not on line 1		
a	Investment expenses not included on Form 990, Part VIII, line 7b	4a	
b	Other (Describe in Part XIII.)	4b	
c	Add lines 4a and 4b	4c	0.
5	Total revenue. Add lines 3 and 4c. (This must equal Form 990, Part I, line 12.)	5	2,150,746.

Part XII Reconciliation of Expenses per Audited Financial Statements With Expenses per Return.

Complete if the organization answered "Yes" on Form 990, Part IV, line 12a

1	Total expenses and losses per audited financial statements	1	1,300,091.
2	Amounts included on line 1 but not on Form 990, Part IX, line 25		
a	Donated services and use of facilities	2a	
b	Prior year adjustments	2b	
c	Other losses	2c	
d	Other (Describe in Part XIII.)	2d	320,260.
e	Add lines 2a through 2d	2e	320,260.
3	Subtract line 2e from line 1	3	979,831.
4	Amounts included on Form 990, Part IX, line 25, but not on line 1		
a	Investment expenses not included on Form 990, Part VIII, line 7b	4a	
b	Other (Describe in Part XIII.)	4b	
c	Add lines 4a and 4b	4c	0.
5	Total expenses. Add lines 3 and 4c. (This must equal Form 990, Part I, line 18.)	5	979,831.

Part XIII Supplemental Information.

Provide the descriptions required for Part II, lines 3, 5, and 9; Part III, lines 1a and 4; Part IV, lines 1b and 2b; Part V, line 4; Part X, line 2; Part XI, lines 2d and 4b; and Part XII, lines 2d and 4b. Also complete this part to provide any additional information.

PART XI, LINE 2D - OTHER ADJUSTMENTS:

COST OF GOODS SOLD 320,260.

PART XII, LINE 2D - OTHER ADJUSTMENTS:

COST OF GOODS SOLD 320,260.

**SCHEDULE J
(Form 990)**

Department of the Treasury
Internal Revenue Service

Compensation Information

For certain Officers, Directors, Trustees, Key Employees, and Highest
Compensated Employees

▶ Complete if the organization answered "Yes" on Form 990, Part IV, line 23.

▶ Attach to Form 990.

▶ Go to www.irs.gov/Form990 for instructions and the latest information.

OMB No 1545-0047

2017

Open to Public
Inspection

Name of the organization

COMMUNITY WORKSHOP RESOURCES, CORP.

Employer identification number

22-2411228

Part I Questions Regarding Compensation

1a Check the appropriate box(es) if the organization provided any of the following to or for a person listed on Form 990,
Part VII, Section A, line 1a. Complete Part III to provide any relevant information regarding these items

- | | |
|--|---|
| <input type="checkbox"/> First-class or charter travel | <input type="checkbox"/> Housing allowance or residence for personal use |
| <input type="checkbox"/> Travel for companions | <input type="checkbox"/> Payments for business use of personal residence |
| <input type="checkbox"/> Tax indemnification and gross-up payments | <input type="checkbox"/> Health or social club dues or initiation fees |
| <input type="checkbox"/> Discretionary spending account | <input type="checkbox"/> Personal services (such as, maid, chauffeur, chef) |

b If any of the boxes on line 1a are checked, did the organization follow a written policy regarding payment or
reimbursement or provision of all of the expenses described above? If "No," complete Part III to explain

2 Did the organization require substantiation prior to reimbursing or allowing expenses incurred by all directors,
trustees, and officers, including the CEO/Executive Director, regarding the items checked on line 1a?

3 Indicate which, if any, of the following the filing organization used to establish the compensation of the organization's
CEO/Executive Director. Check all that apply. Do not check any boxes for methods used by a related organization to
establish compensation of the CEO/Executive Director, but explain in Part III

- | | |
|---|--|
| <input type="checkbox"/> Compensation committee | <input type="checkbox"/> Written employment contract |
|---|--|

	Yes	No
1b		
2		

Part III	Supplemental Information
-----------------	---------------------------------

Provide the information, explanation, or descriptions required for Part I, lines 1a, 1b, 3, 4a, 4b, 4c, 5a, 5b, 6a, 6b, 7, and 8, and for Part II. Also complete this part for any additional information

[illegible]

SCHEDULE O
(Form 990 or 990-EZ)

Department of the Treasury
Internal Revenue Service

Supplemental Information to Form 990 or 990-EZ

Complete to provide information for responses to specific questions on
Form 990 or 990-EZ or to provide any additional information.

▶ Attach to Form 990 or 990-EZ.

▶ Go to www.irs.gov/Form990 for the latest information.

OMB No 1545-0047

2017

Open to Public
Inspection

Name of the organization

COMMUNITY WORKSHOP RESOURCES, CORP.

Employer identification number
22-2411228

FORM 990, PART I, LINE 1, DESCRIPTION OF ORGANIZATION MISSION:

PRIMARILY LEASED TO COMMUNITY, WORK, AND INDEPENDENCE, INC., A
NOT-FOR-PROFIT ORGANIZATION.

FORM 990, PART VI, SECTION A, LINE 3:

THE ORGANIZATION DELEGATES CONTROL OVER MANAGEMENT DUTIES TO A RELATED
ORGANIZATION, COMMUNITY, WORK, AND INDEPENDENCE, INC. (CWI). THEY PAY A
MONTHLY MANAGEMENT FEE TO THE RELATED ORGANIZATION.

FORM 990, PART VI, SECTION A, LINE 8B:

CWR HAS NO ADDITIONAL COMMITTEES OTHER THAN THEIR BOARD OF DIRECTORS.

FORM 990, PART VI, SECTION B, LINE 11B:

THE 990 IS REVIEWED AND APPROVED BY THE BOARD AT A BOARD MEETING PRIOR TO
FILING THE 990.

FORM 990, PART VI, SECTION B, LINE 12C:

CONFLICTS OF INTEREST ARE REVIEWED ANNUALLY AND ANYTIME THERE IS A CHANGE
OF BOARD MEMBERS OR PERSONNEL.

FORM 990, PART VI, SECTION C, LINE 19:

GOVERNING DOCUMENTS, CONFLICT OF INTEREST POLICY, AND FINANCIAL STATEMENTS
ARE NOT AVAILABLE TO THE PUBLIC. ALL DOCUMENTS REQUIRED TO BE AVAILABLE
FOR PUBLIC INSPECTION ARE AVAILABLE UPON REQUEST.

FORM 990, PART XII, LINE 2C:

LHA For Paperwork Reduction Act Notice, see the Instructions for Form 990 or 990-EZ.

Schedule O (Form 990 or 990-EZ) (2017)

732211 09-07-17

Name of the organization

COMMUNITY WORKSHOP RESOURCES, CORP.

Employer identification number

22-2411228

NO CHANGES FROM PRIOR YEARS.

SCHEDULE R
(Form 990)

Department of the Treasury
Internal Revenue Service

Related Organizations and Unrelated Partnerships

▶ Complete if the organization answered "Yes" on Form 990, Part IV, line 33, 34, 35b, 36, or 37.
▶ Attach to Form 990.

▶ Go to www.irs.gov/Form990 for instructions and the latest information.

OMB No. 1545-0047

2017

Open to Public Inspection

Name of the organization

COMMUNITY WORKSHOP RESOURCES, CORP.

Employer identification number
22-2411228

Part I Identification of Disregarded Entities. Complete if the organization answered "Yes" on Form 990, Part IV, line 33.

(a) Name, address, and EIN (if applicable) of disregarded entity	(b) Primary activity	(c) Legal domicile (state or foreign country)	(d) Total income	(e) End-of-year assets	(f) Direct controlling entity
ADIRONDACK JAB, LLC 37 EVERTS AVENUE GLENS FALLS, NY 12801	PROVIDE VOCATIONAL TRAINING FOR PEOPLE WITH DISABILITIES	NEW YORK	540,371.	214,778	COMMUNITY WORKSHOP RESOURCES, CORP.

Part II Identification of Related Tax-Exempt Organizations. Complete if the organization answered "Yes" on Form 990, Part IV, line 34, because it had one or more related tax-exempt organizations during the tax year.

(a) Name, address, and EIN of related organization	(b) Primary activity	(c) Legal domicile (state or foreign country)	(d) Exempt Code section	(e) Public charity status (if section 501(c)(3))	(f) Direct controlling entity	(g) Section 512(b)(13) controlled entity?	
						Yes	No
COMMUNITY, WORK, AND INDEPENDENCE, INC - 14-1470091, 37 EVERTS AVENUE PO BOX 303, GLENS FALLS, NY 12801	PROVIDE SERVICES TO THE DEVELOPMENTALLY DISABLED	NEW YORK	501(C)(3)	10	N/A		X

For Paperwork Reduction Act Notice, see the Instructions for Form 990.

Schedule R (Form 990) 2017

Part V Transactions With Related Organizations. Complete if the organization answered "Yes" on Form 990, Part IV, line 34, 35b, or 36.

Note: Complete line 1 if any entity is listed in Parts II, III, or IV of this schedule

1 During the tax year, did the organization engage in any of the following transactions with one or more related organizations listed in Parts II-IV?**a** Receipt of (i) interest, (ii) annuities, (iii) royalties, or (iv) rent from a controlled entity**b** Gift, grant, or capital contribution to related organization(s)**c** Gift, grant, or capital contribution from related organization(s)**d** Loans or loan guarantees to or for related organization(s)**e** Loans or loan guarantees by related organization(s)**f** Dividends from related organization(s)**g** Sale of assets to related organization(s)**h** Purchase of assets from related organization(s)**i** Exchange of assets with related organization(s)**j** Lease of facilities, equipment, or other assets to related organization(s)**k** Lease of facilities, equipment, or other assets from related organization(s)**l** Performance of services or membership or fundraising solicitations for related organization(s)**m** Performance of services or membership or fundraising solicitations by related organization(s)**n** Sharing of facilities, equipment, mailing lists, or other assets with related organization(s)**o** Sharing of paid employees with related organization(s)**p** Reimbursement paid to related organization(s) for expenses**q** Reimbursement paid by related organization(s) for expenses**r** Other transfer of cash or property to related organization(s)**s** Other transfer of cash or property from related organization(s)**2** If the answer to any of the above is "Yes," see the instructions for information on who must complete this line, including covered relationships and transaction thresholds.

	(a) Name of related organization	(b) Transaction type (a-s)	(c) Amount involved	(d) Method of determining amount involved
(1)				
(2)				
(3)				
(4)				
(5)				
(6)				

Part VII Supplemental Information.

Provide additional information for responses to questions on Schedule R. See instructions.

PART IV, IDENTIFICATION OF RELATED ORGANIZATIONS TAXABLE AS CORP OR TRUST:

NAME OF RELATED ORGANIZATION:

PROFMAN CORPORATION

DIRECT CONTROLLING ENTITY: COMMUNITY WORKSHOP RESOURCES, CORP.

NAME OF RELATED ORGANIZATION:

NORTH COUNTRY HABILITATION SERVICES, INC

DIRECT CONTROLLING ENTITY: COMMUNITY WORKSHOP RESOURCES, CORP.