



See a Social Security Number? Say Something!
Report Privacy Problems to <https://public.resource.org/privacy>
Or call the IRS Identity Theft Hotline at 1-800-908-4490





See a Social Security Number? Say Something!
Report Privacy Problems to <https://public.resource.org/privacy>
Or call the IRS Identity Theft Hotline at 1-800-908-4490



ENVELOPE
POSTMARK DATE
SEP 05 2015

Form **990**

Return of Organization Exempt From Income Tax

OMB No 1545-0047

2014

Open to Public Inspection

Under section 501(c), 527, or 4947(a)(1) of the Internal Revenue Code (except private foundations)

▶ Do not enter social security numbers on this form as it may be made public.
▶ Information about Form 990 and its instructions is at www.irs.gov/form990.

Department of the Treasury
Internal Revenue Service

A For the 2014 calendar year, or tax year beginning July 1, 2014, and ending June 30, 20 15

B Check if applicable:
 Address change
 Name change
 Initial return
 Final return/terminated
 Amended return
 Application pending

C Name of organization Arctic Access, Inc.
 Doing business as % Audrey P. Aanes
 Number and street (or P O box if mail is not delivered to street address) Room/suite
11840 Moose Road
 City or town, state or province, country, and ZIP or foreign postal code
Anchorage, Alaska 99516

D Employer identification number
92-0147951

E Telephone number
(907) 345-0715

G Gross receipts \$ 277,148

F Name and address of principal officer
Audrey P. Aanes Exec. Director

H(a) Is this a group return for subordinates? Yes No
H(b) Are all subordinates included? Yes No
 If "No," attach a list (see instructions)

I Tax-exempt status 501(c)(3) 501(c) () ◀ (insert no) 4947(a)(1) or 527

J Website: ▶ arcticaccessa.org

K Form of organization Corporation Trust Association Other ▶

L Year of formation: 1993 **M** State of legal domicile Ak

Part I Summary

Activities & Governance	1	Briefly describe the organization's mission or most significant activities: <u>Our mission is to provide services and opportunities for elders and people with disabilities to remain in the village of their choice.</u>		
	2	Check this box <input type="checkbox"/> if the organization discontinued its operations or disposed of more than 25% of its net assets.		
	3	Number of voting members of the governing body (Part VI, line 1a)	<u>3</u>	
	4	Number of independent voting members of the governing body (Part VI, line 1b)	<u>4</u>	
	5	Total number of individuals employed in calendar year 2014 (Part V, line 2a)	<u>5</u>	
	6	Total number of volunteers (estimate if necessary)	<u>6</u>	
	7a	Total unrelated business revenue from Part VIII, column (C), line 13		<u>10,450</u>
7b	Net unrelated business taxable income from Form 990-T, line 34			
Revenue	8	Contributions and grants (Part VIII, line 1h)	<u>218,069</u>	<u>209,698</u>
	9	Program service revenue (Part VIII, line 2g)	<u>34,578</u>	<u>57,000</u>
	10	Investment income (Part VIII, column (A), lines 3, 4, and 7d)		
	11	Other revenue (Part VIII, column (A), lines 5, 6d, 8c, 9c, 10c, and 11e)		
	12	Total revenue—add lines 8 through 11 (must equal Part VIII, column (A), line 12)	<u>252,647</u>	<u>277,148</u>
Expenses	13	Grants and similar amounts paid (Part IX, column (A), lines 1-3)		
	14	Benefits paid to or for members (Part IX, column (A), line 4)		
	15	Salaries, other compensation, employee benefits (Part IX, column (A), lines 5-10)		
	16a	Professional fundraising fees (Part IX, column (A), line 11e)		
	b	Total fundraising expenses (Part IX, column (D), line 25) ▶		
	17	Other expenses (Part IX, column (A), lines 11a-11d, 11f-24e)		
	18	Total expenses. Add lines 13-17 (must equal Part IX, column (A), line 25)	<u>211,916</u>	<u>232,235</u>
Net Assets or Fund Balances	19	Revenue less expenses. Subtract line 18 from line 12	<u>40,731</u>	<u>85,644</u>
	20	Total assets (Part X, line 16)	<u>40,731</u>	<u>85,644</u>
	21	Total liabilities (Part X, line 26)		
	22	Net assets or fund balances. Subtract line 21 from line 20	<u>40,731</u>	<u>85,644</u>

Part II Signature Block

Under penalties of perjury, I declare that I have examined this return, including accompanying schedules and statements, and to the best of my knowledge and belief, it is true, correct, and complete. Declaration of preparer (other than officer) is based on all information of which preparer has any knowledge.

Sign Here

Signature of officer: Audrey P. Aanes Date: 8-16-2015

Type or print name and title: Audrey P. Aanes, Exec. Director

Paid Preparer Use Only

Print/Type preparer's name: Betty M. Linnemann Preparer's signature: Betty M. Linnemann Date: 8-31-15 Check if self-employed PTIN: 39-28-5887

Firm's name: Westwood Accounting Firm's EIN: 907-243-5631

Firm's address: 4571 Montrose Circle Anchorage, Ak. Phone no: (907) 243-5631

May the IRS discuss this return with the preparer shown above? (see instructions) Yes No

915
18K

Part III Statement of Program Service Accomplishments

Check if Schedule O contains a response or note to any line in this Part III

1 Briefly describe the organization's mission:

..... See Page 1

2 Did the organization undertake any significant program services during the year which were not listed on the prior Form 990 or 990-EZ? Yes No

If "Yes," describe these new services on Schedule O.

3 Did the organization cease conducting, or make significant changes in how it conducts, any program services? Yes No

If "Yes," describe these changes on Schedule O.

4 Describe the organization's program service accomplishments for each of its three largest program services, as measured by expenses. Section 501(c)(3) and 501(c)(4) organizations are required to report the amount of grants and allocations to others, the total expenses, and revenue, if any, for each program service reported.

4a (Code: A) (Expenses \$ 152,818 including grants of \$ 152,818) (Revenue \$ 152,818)

..... Department of Vocational Rehabilitation

..... To provide Independent Living Services to elders and people with disabilities in the NW Arctic and Nome census retions of NW Alaska

4b (Code: B) (Expenses \$ 56,880 including grants of \$ 56,880) (Revenue \$ 56,880)

..... Department of Transportation

..... To provide low cost taxi vouchers to supplement transportation cost in Nome for elders and people with disabilities.

4c (Code C) (Expenses \$ 19,696 including grants of \$ 57,000) (Revenue \$ 57,000)

..... Program Services: Dept. VR-CRP - Employment=\$6,700
..... Garden Project-\$2,000 Rural Cap-\$40,000 Home assessments
..... TBI \$8,300 - Tramatic Brain Injury = \$57,000 Carryover \$37,304

4d Other program services (Describe in Schedule O.) Donations
(Expenses \$ 2,841.00 including grants of \$ -0-) (Revenue \$ 10,450)

4e Total program service expenses ▶ 2,841.00

carryover 7,609

Part IV Checklist of Required Schedules

	Yes	No
1 Is the organization described in section 501(c)(3) or 4947(a)(1) (other than a private foundation)? If "Yes," complete Schedule A	<input checked="" type="checkbox"/>	
2 Is the organization required to complete Schedule B, Schedule of Contributors (see instructions)?	<input checked="" type="checkbox"/>	
3 Did the organization engage in direct or indirect political campaign activities on behalf of or in opposition to candidates for public office? If "Yes," complete Schedule C, Part I		<input checked="" type="checkbox"/>
4 Section 501(c)(3) organizations. Did the organization engage in lobbying activities, or have a section 501(h) election in effect during the tax year? If "Yes," complete Schedule C, Part II		<input checked="" type="checkbox"/>
5 Is the organization a section 501(c)(4), 501(c)(5), or 501(c)(6) organization that receives membership dues, assessments, or similar amounts as defined in Revenue Procedure 98-19? If "Yes," complete Schedule C, Part III		<input checked="" type="checkbox"/>
6 Did the organization maintain any donor advised funds or any similar funds or accounts for which donors have the right to provide advice on the distribution or investment of amounts in such funds or accounts? If "Yes," complete Schedule D, Part I		<input checked="" type="checkbox"/>
7 Did the organization receive or hold a conservation easement, including easements to preserve open space, the environment, historic land areas, or historic structures? If "Yes," complete Schedule D, Part II		<input checked="" type="checkbox"/>
8 Did the organization maintain collections of works of art, historical treasures, or other similar assets? If "Yes," complete Schedule D, Part III		<input checked="" type="checkbox"/>
9 Did the organization report an amount in Part X, line 21, for escrow or custodial account liability; serve as a custodian for amounts not listed in Part X; or provide credit counseling, debt management, credit repair, or debt negotiation services? If "Yes," complete Schedule D, Part IV		<input checked="" type="checkbox"/>
10 Did the organization, directly or through a related organization, hold assets in temporarily restricted endowments, permanent endowments, or quasi-endowments? If "Yes," complete Schedule D, Part V		<input checked="" type="checkbox"/>
11 If the organization's answer to any of the following questions is "Yes," then complete Schedule D, Parts VI, VII, VIII, IX, or X as applicable.		
a Did the organization report an amount for land, buildings, and equipment in Part X, line 10? If "Yes," complete Schedule D, Part VI		<input checked="" type="checkbox"/>
b Did the organization report an amount for investments—other securities in Part X, line 12 that is 5% or more of its total assets reported in Part X, line 16? If "Yes," complete Schedule D, Part VII		<input checked="" type="checkbox"/>
c Did the organization report an amount for investments—program related in Part X, line 13 that is 5% or more of its total assets reported in Part X, line 16? If "Yes," complete Schedule D, Part VIII		<input checked="" type="checkbox"/>
d Did the organization report an amount for other assets in Part X, line 15 that is 5% or more of its total assets reported in Part X, line 16? If "Yes," complete Schedule D, Part IX		<input checked="" type="checkbox"/>
e Did the organization report an amount for other liabilities in Part X, line 25? If "Yes," complete Schedule D, Part X		<input checked="" type="checkbox"/>
f Did the organization's separate or consolidated financial statements for the tax year include a footnote that addresses the organization's liability for uncertain tax positions under FIN 48 (ASC 740)? If "Yes," complete Schedule D, Part X		<input checked="" type="checkbox"/>
12 a Did the organization obtain separate, independent audited financial statements for the tax year? If "Yes," complete Schedule D, Parts XI and XII		<input checked="" type="checkbox"/>
b Was the organization included in consolidated, independent audited financial statements for the tax year? If "Yes," and if the organization answered "No" to line 12a, then completing Schedule D, Parts XI and XII is optional		<input checked="" type="checkbox"/>
13 Is the organization a school described in section 170(b)(1)(A)(ii)? If "Yes," complete Schedule E		<input checked="" type="checkbox"/>
14 a Did the organization maintain an office, employees, or agents outside of the United States?		<input checked="" type="checkbox"/>
b Did the organization have aggregate revenues or expenses of more than \$10,000 from grantmaking, fundraising, business, investment, and program service activities outside the United States, or aggregate foreign investments valued at \$100,000 or more? If "Yes," complete Schedule F, Parts I and IV.		<input checked="" type="checkbox"/>
15 Did the organization report on Part IX, column (A), line 3, more than \$5,000 of grants or other assistance to or for any foreign organization? If "Yes," complete Schedule F, Parts II and IV		<input checked="" type="checkbox"/>
16 Did the organization report on Part IX, column (A), line 3, more than \$5,000 of aggregate grants or other assistance to or for foreign individuals? If "Yes," complete Schedule F, Parts III and IV.		<input checked="" type="checkbox"/>
17 Did the organization report a total of more than \$15,000 of expenses for professional fundraising services on Part IX, column (A), lines 6 and 11e? If "Yes," complete Schedule G, Part I (see instructions)		<input checked="" type="checkbox"/>
18 Did the organization report more than \$15,000 total of fundraising event gross income and contributions on Part VIII, lines 1c and 8a? If "Yes," complete Schedule G, Part II		<input checked="" type="checkbox"/>
19 Did the organization report more than \$15,000 of gross income from gaming activities on Part VIII, line 9a? If "Yes," complete Schedule G, Part III		<input checked="" type="checkbox"/>
20 a Did the organization operate one or more hospital facilities? If "Yes," complete Schedule H		<input checked="" type="checkbox"/>
b If "Yes" to line 20a, did the organization attach a copy of its audited financial statements to this return?		<input checked="" type="checkbox"/>

Part IV Checklist of Required Schedules (continued)

		Yes	No
21	Did the organization report more than \$5,000 of grants or other assistance to any domestic organization or domestic government on Part IX, column (A), line 1? <i>If "Yes," complete Schedule I, Parts I and II</i>		X
22	Did the organization report more than \$5,000 of grants or other assistance to or for domestic individuals on Part IX, column (A), line 2? <i>If "Yes," complete Schedule I, Parts I and III</i>		X
23	Did the organization answer "Yes" to Part VII, Section A, line 3, 4, or 5 about compensation of the organization's current and former officers, directors, trustees, key employees, and highest compensated employees? <i>If "Yes," complete Schedule J</i>	X	
24a	Did the organization have a tax-exempt bond issue with an outstanding principal amount of more than \$100,000 as of the last day of the year, that was issued after December 31, 2002? <i>If "Yes," answer lines 24b through 24d and complete Schedule K. If "No," go to line 25a</i>		X
b	Did the organization invest any proceeds of tax-exempt bonds beyond a temporary period exception?		X
c	Did the organization maintain an escrow account other than a refunding escrow at any time during the year to defease any tax-exempt bonds?		X
d	Did the organization act as an "on behalf of" issuer for bonds outstanding at any time during the year?		X
25a	Section 501(c)(3), 501(c)(4), and 501(c)(29) organizations. Did the organization engage in an excess benefit transaction with a disqualified person during the year? <i>If "Yes," complete Schedule L, Part I</i>		X
b	Is the organization aware that it engaged in an excess benefit transaction with a disqualified person in a prior year, and that the transaction has not been reported on any of the organization's prior Forms 990 or 990-EZ? <i>If "Yes," complete Schedule L, Part I</i>		X
26	Did the organization report any amount on Part X, line 5, 6, or 22 for receivables from or payables to any current or former officers, directors, trustees, key employees, highest compensated employees, or disqualified persons? <i>If "Yes," complete Schedule L, Part II</i>		X
27	Did the organization provide a grant or other assistance to an officer, director, trustee, key employee, substantial contributor or employee thereof, a grant selection committee member, or to a 35% controlled entity or family member of any of these persons? <i>If "Yes," complete Schedule L, Part III</i>		X
28	Was the organization a party to a business transaction with one of the following parties (see Schedule L, Part IV instructions for applicable filing thresholds, conditions, and exceptions):		
a	A current or former officer, director, trustee, or key employee? <i>If "Yes," complete Schedule L, Part IV</i>		X
b	A family member of a current or former officer, director, trustee, or key employee? <i>If "Yes," complete Schedule L, Part IV</i>		X
c	An entity of which a current or former officer, director, trustee, or key employee (or a family member thereof) was an officer, director, trustee, or direct or indirect owner? <i>If "Yes," complete Schedule L, Part IV</i>		X
29	Did the organization receive more than \$25,000 in non-cash contributions? <i>If "Yes," complete Schedule M</i>		X
30	Did the organization receive contributions of art, historical treasures, or other similar assets, or qualified conservation contributions? <i>If "Yes," complete Schedule M</i>		X
31	Did the organization liquidate, terminate, or dissolve and cease operations? <i>If "Yes," complete Schedule N, Part I</i>		X
32	Did the organization sell, exchange, dispose of, or transfer more than 25% of its net assets? <i>If "Yes," complete Schedule N, Part II</i>		X
33	Did the organization own 100% of an entity disregarded as separate from the organization under Regulations sections 301.7701-2 and 301.7701-3? <i>If "Yes," complete Schedule R, Part I</i>		X
34	Was the organization related to any tax-exempt or taxable entity? <i>If "Yes," complete Schedule R, Part II, III, or IV, and Part V, line 1</i>		X
35a	Did the organization have a controlled entity within the meaning of section 512(b)(13)?		X
b	If "Yes" to line 35a, did the organization receive any payment from or engage in any transaction with a controlled entity within the meaning of section 512(b)(13)? <i>If "Yes," complete Schedule R, Part V, line 2</i>		X
36	Section 501(c)(3) organizations. Did the organization make any transfers to an exempt non-charitable related organization? <i>If "Yes," complete Schedule R, Part V, line 2</i>		X
37	Did the organization conduct more than 5% of its activities through an entity that is not a related organization and that is treated as a partnership for federal income tax purposes? <i>If "Yes," complete Schedule R, Part VI</i>		X
38	Did the organization complete Schedule O and provide explanations in Schedule O for Part VI, lines 11b and 19? Note. All Form 990 filers are required to complete Schedule O	X	

Part V Statements Regarding Other IRS Filings and Tax Compliance

Check if Schedule O contains a response or note to any line in this Part V

Table with columns for question number, question text, and Yes/No response boxes. Includes sections for backup withholding, employee reporting, foreign accounts, prohibited tax shelter transactions, charitable contributions, and sponsoring organizations.

Part VI Governance, Management, and Disclosure For each "Yes" response to lines 2 through 7b below, and for a "No" response to line 8a, 8b, or 10b below, describe the circumstances, processes, or changes in Schedule O. See instructions Check if Schedule O contains a response or note to any line in this Part VI

Section A. Governing Body and Management

Table with 4 columns: Question, Yes, No. Rows include: 1a Enter the number of voting members of the governing body at the end of the tax year. 1b Enter the number of voting members included in line 1a, above, who are independent. 2 Did any officer, director, trustee, or key employee have a family relationship or a business relationship with any other officer, director, trustee, or key employee? 3 Did the organization delegate control over management duties customarily performed by or under the direct supervision of officers, directors, or trustees, or key employees to a management company or other person? 4 Did the organization make any significant changes to its governing documents since the prior Form 990 was filed? 5 Did the organization become aware during the year of a significant diversion of the organization's assets? 6 Did the organization have members or stockholders? 7a Did the organization have members, stockholders, or other persons who had the power to elect or appoint one or more members of the governing body? 7b Are any governance decisions of the organization reserved to (or subject to approval by) members, stockholders, or persons other than the governing body? 8 Did the organization contemporaneously document the meetings held or written actions undertaken during the year by the following: 8a The governing body? 8b Each committee with authority to act on behalf of the governing body? 9 Is there any officer, director, trustee, or key employee listed in Part VII, Section A, who cannot be reached at the organization's mailing address? If "Yes," provide the names and addresses in Schedule O.

Section B. Policies (This Section B requests information about policies not required by the Internal Revenue Code.)

Table with 4 columns: Question, Yes, No. Rows include: 10a Did the organization have local chapters, branches, or affiliates? Branch in Nome, Ak. 10b If "Yes," did the organization have written policies and procedures governing the activities of such chapters, affiliates, and branches to ensure their operations are consistent with the organization's exempt purposes? 11a Has the organization provided a complete copy of this Form 990 to all members of its governing body before filing the form? 11b Describe in Schedule O the process, if any, used by the organization to review this Form 990. 12a Did the organization have a written conflict of interest policy? If "No," go to line 13. 12b Were officers, directors, or trustees, and key employees required to disclose annually interests that could give rise to conflicts? 12c Did the organization regularly and consistently monitor and enforce compliance with the policy? If "Yes," describe in Schedule O how this was done. 13 Did the organization have a written whistleblower policy? 14 Did the organization have a written document retention and destruction policy? 15 Did the process for determining compensation of the following persons include a review and approval by independent persons, comparability data, and contemporaneous substantiation of the deliberation and decision? 15a The organization's CEO, Executive Director, or top management official. 15b Other officers or key employees of the organization. If "Yes" to line 15a or 15b, describe the process in Schedule O (see instructions). 16a Did the organization invest in, contribute assets to, or participate in a joint venture or similar arrangement with a taxable entity during the year? 16b If "Yes," did the organization follow a written policy or procedure requiring the organization to evaluate its participation in joint venture arrangements under applicable federal tax law, and take steps to safeguard the organization's exempt status with respect to such arrangements?

Section C. Disclosure

- 17 List the states with which a copy of this Form 990 is required to be filed Alaska
18 Section 6104 requires an organization to make its Forms 1023 (or 1024 if applicable), 990, and 990-T (Section 501(c)(3)s only) available for public inspection. Indicate how you made these available. Check all that apply.
19 Describe in Schedule O whether (and if so, how) the organization made its governing documents, conflict of interest policy, and financial statements available to the public during the tax year.
20 State the name, address, and telephone number of the person who possesses the organization's books and records: Arctic Access, Inc. % Audrey P. Aanes, Exec. Director

11840 Moose Road
Anchorage, Alaska 99516

(907) 345-0715

Part VII Compensation of Officers, Directors, Trustees, Key Employees, Highest Compensated Employees, and Independent Contractors

Check if Schedule O contains a response or note to any line in this Part VII

Section A. Officers, Directors, Trustees, Key Employees, and Highest Compensated Employees

1a Complete this table for all persons required to be listed. Report compensation for the calendar year ending with or within the organization's tax year.

- List all of the organization's **current** officers, directors, trustees (whether individuals or organizations), regardless of amount of compensation. Enter -0- in columns (D), (E), and (F) if no compensation was paid.
- List all of the organization's **current** key employees, if any. See instructions for definition of "key employee."
- List the organization's five **current** highest compensated employees (other than an officer, director, trustee, or key employee) who received reportable compensation (Box 5 of Form W-2 and/or Box 7 of Form 1099-MISC) of more than \$100,000 from the organization and any related organizations.
- List all of the organization's **former** officers, key employees, and highest compensated employees who received more than \$100,000 of reportable compensation from the organization and any related organizations.
- List all of the organization's **former directors or trustees** that received, in the capacity as a former director or trustee of the organization, more than \$10,000 of reportable compensation from the organization and any related organizations.

List persons in the following order: individual trustees or directors; institutional trustees; officers; key employees, highest compensated employees; and former such persons

Check this box if neither the organization nor any related organization compensated any current officer, director, or trustee.

(A) Name and Title	(B) Average hours per week (list any hours for related organizations below dotted line)	(C) Position (do not check more than one box, unless person is both an officer and a director/trustee)						(D) Reportable compensation from the organization (W-2/1099-MISC) 2014 W-2	(E) Reportable compensation from related organizations (W-2/1099-MISC) 2014 1099	(F) Estimated amount of other compensation from the organization and related organizations
		Individual trustee or director	Institutional trustee	Officer	Key employee	Highest compensated employee	Former			
(1) Audrey P. Aanes, E.D.	40						60,347.74			
(2) Denice L. Gilroy Program Director	40						35,947.07			
(3) Russell W. Williams, Jr.	20						25,238.80			
(4) Elder and Disability Resource Coordinator										
(5) Checker Cab								1562.00		
(6) Mr. Kab								10296.00		
(7) EZ Enterprises								2321.00		
(8) Westwood Accounting								10000.00		
(9) Alice Wik, Master Gardner								4620.00		
(10) Serena Dowling, Clerk								2235.00		
(11) Numerus Accounting, Acct.								1966.25		
(12) Cynthia Bolivar, Consultant								3910.00		
(13) BOARD OF DIRECTORS										
(14) Michael Atoruk Chrm.										
Reuben Mixsooks, Secy.										

Dale Stotts, Treas.

Kiana, Alaska

Part VII Section A. Officers, Directors, Trustees, Key Employees, and Highest Compensated Employees (continued)

(A) Name and title	(B) Average hours per week (list any hours for related organizations below dotted line)	(C) Position (do not check more than one box, unless person is both an officer and a director/trustee)						(D) Reportable compensation from the organization (W-2/1099-MISC)	(E) Reportable compensation from related organizations (W-2/1099-MISC)	(F) Estimated amount of other compensation from the organization and related organizations
		Individual trustee or director	Institutional trustee	Officer	Key employee	Highest compensated employee	Former			
(15)										
(16)										
(17)		SEE PAGE 7								
(18)										
(19)										
(20)										
(21)										
(22)										
(23)										
(24)										
(25)										
1b Sub-total										
c Total from continuation sheets to Part VII, Section A										
d Total (add lines 1b and 1c)										

2 Total number of individuals (including but not limited to those listed above) who received more than \$100,000 of reportable compensation from the organization

	Yes	No
3 Did the organization list any former officer, director, or trustee, key employee, or highest compensated employee on line 1a? <i>If "Yes," complete Schedule J for such individual</i>		X
4 For any individual listed on line 1a, is the sum of reportable compensation and other compensation from the organization and related organizations greater than \$150,000? <i>If "Yes," complete Schedule J for such individual</i>		X
5 Did any person listed on line 1a receive or accrue compensation from any unrelated organization or individual for services rendered to the organization? <i>If "Yes," complete Schedule J for such person</i>		X

Section B. Independent Contractors

1 Complete this table for your five highest compensated independent contractors that received more than \$100,000 of compensation from the organization. Report compensation for the calendar year ending with or within the organization's tax year

(A) Name and business address	(B) Description of services	(C) Compensation
N.A.		

2 Total number of independent contractors (including but not limited to those listed above) who received more than \$100,000 of compensation from the organization

Part VIII Statement of Revenue

Check if Schedule O contains a response or note to any line in this Part VIII

			(A) Total revenue	(B) Related or exempt function revenue	(C) Unrelated business revenue	(D) Revenue excluded from tax under sections 512-514	
Contributions, Gifts, Grants and Other Similar Amounts	1a	Federated campaigns	1a				
	b	Membership dues	1b				
	c	Fundraising events	1c				
	d	Related organizations	1d				
	e	Government grants (contributions)	1e	209,698			
	f	All other contributions, gifts, grants, and similar amounts not included above	1f				
	g	Noncash contributions included in lines 1a-1f. \$		10,450			
	h	Total. Add lines 1a-1f		220,148			
Program Service Revenue			Business Code				
	2a	-----					
	b	-----					
	c	-----					
	d	-----					
	e	-----					
	f	All other program service revenue		57,000			
g	Total. Add lines 2a-2f		57,000				
Other Revenue	3	Investment income (including dividends, interest, and other similar amounts)					
	4	Income from investment of tax-exempt bond proceeds					
	5	Royalties					
	6a	Gross rents	(i) Real	(ii) Personal			
	b	Less rental expenses					
	c	Rental income or (loss)					
	d	Net rental income or (loss)					
	7a	Gross amount from sales of assets other than inventory	(i) Securities	(ii) Other			
	b	Less cost or other basis and sales expenses					
	c	Gain or (loss)					
d	Net gain or (loss)						
8a	Gross income from fundraising events (not including \$ of contributions reported on line 1c). See Part IV, line 18	a					
		b	Less direct expenses	b			
		c	Net income or (loss) from fundraising events				
9a	Gross income from gaming activities. See Part IV, line 19	a					
		b	Less direct expenses	b			
		c	Net income or (loss) from gaming activities				
10a	Gross sales of inventory, less returns and allowances	a					
		b	Less cost of goods sold	b			
		c	Net income or (loss) from sales of inventory				
Miscellaneous Revenue		Business Code					
11a	-----						
b	-----						
c	-----						
d	All other revenue						
e	Total. Add lines 11a-11d						
12	Total revenue. See instructions.		277,148				

Part IX Statement of Functional Expenses

Section 501(c)(3) and 501(c)(4) organizations must complete all columns. All other organizations must complete column (A).

Check if Schedule O contains a response or note to any line in this Part IX **Donations** **DVR/DOT**

Do not include amounts reported on lines 6b, 7b, 8b, 9b, and 10b of Part VIII.		(A) Total expenses ALL	(B) Program service expenses	(C) Management and general expenses	(D) Fundraising expenses
1	Grants and other assistance to domestic organizations and domestic governments. See Part IV, line 21				
2	Grants and other assistance to domestic individuals. See Part IV, line 22				
3	Grants and other assistance to foreign organizations, foreign governments, and foreign individuals. See Part IV, lines 15 and 16				
4	Benefits paid to or for members				
5	Compensation of current officers, directors, trustees, and key employees				
6	Compensation not included above, to disqualified persons (as defined under section 4958(f)(1)) and persons described in section 4958(c)(3)(B)				
7	Other salaries and wages	161,251	9,302		151,949
8	Pension plan accruals and contributions (include section 401(k) and 403(b) employer contributions)				
9	Other employee benefits				
10	Payroll taxes				
11	Fees for services (non-employees):				
a	Management				
b	Legal				
c	Accounting				
d	Lobbying				
e	Professional fundraising services. See Part IV, line 17				
f	Investment management fees				
g	Other (If line 11g amount exceeds 10% of line 25, column (A) amount, list line 11g expenses on Schedule O.)				
12	Advertising and promotion	500			500
13	Office expenses	6,776	4,333		2,443
14	Information technology				
15	Royalties				
16	Occupancy				
17	Travel	15,437	1,188	376	13,873
18	Payments of travel or entertainment expenses for any federal, state, or local public officials				
19	Conferences, conventions, and meetings				
20	z Other Other	1,659			1,659
21	Payments to affiliates				
22	Depreciation, depletion, and amortization				
23	Insurance	829			829
24	Other expenses. Itemize expenses not covered above (List miscellaneous expenses in line 24e. If line 24e amount exceeds 10% of line 25, column (A) amount, list line 24e expenses on Schedule O.)				
a	Contractual	31,936	3,314	2,465	26,157
b	Assistive Devices	2,967	1,559		1,408
c	Transportation Svcs.	10,880			10,880
d				
e	All other expenses				
25	Total functional expenses. Add lines 1 through 24e	232,235	19,696	2,841	209,698
26	Joint costs. Complete this line only if the organization reported in column (B) joint costs from a combined educational campaign and fundraising solicitation. Check here <input type="checkbox"/> if following SOP 98-2 (ASC 958-720)	232,235	19,696	2,841	209,698

Part X Balance Sheet

		(A) Beginning of year		(B) End of year	
Assets	1	Cash—non-interest-bearing	40,731	1	99,653.00
	2	Savings and temporary cash investments		2	37,491.00
	3	Pledges and grants receivable, net		3	
	4	Accounts receivable, net		4	
	5	Receivables from current and former officers, directors, trustees, key employees, and highest compensated employees. Complete Part II of Schedule L		5	
	6	Receivables from other disqualified persons (as defined under section 4958(f)(1)), persons described in section 4958(c)(3)(B), and contributing employers and sponsoring organizations of section 501(c)(9) voluntary employees' beneficiary organizations (see instructions)		6	
	7	Notes and loans receivable, net		7	
	8	Inventories for sale or use		8	
	9	Prepaid expenses and deferred charges		9	
	10a	Land, buildings, and equipment: cost or other basis. Complete Part VI of Schedule D	10a		
	b	Less: accumulated depreciation	10b	10c	
	11	Investments—publicly traded securities		11	
	12	Investments—other securities. See Part IV, line 11		12	
	13	Investments—program-related. See Part IV, line 11		13	
	14	Intangible assets		14	
	15	Other assets. See Part IV, line 11		15	
16	Total assets. Add lines 1 through 15 (must equal line 34)	40,731	16	137,144	
Liabilities	17	Accounts payable and accrued expenses		17	
	18	Grants payable		18	
	19	Deferred revenue		19	
	20	Tax-exempt bond liabilities		20	
	21	Escrow or custodial account liability. Complete Part IV of Schedule D		21	
	22	Payables to current and former officers, directors, trustees, key employees, highest compensated employees, and disqualified persons. Complete Part II of Schedule L		22	
	23	Secured mortgages and notes payable to unrelated third parties		23	
	24	Unsecured notes and loans payable to unrelated third parties		24	
	25	Other liabilities. Complete Part X of Schedule D		25	
	26	Total liabilities. Add lines 17 through 25	-0-	26	-0-
Net Assets or Fund Balances	Organizations that follow SFAS 117, check here <input type="checkbox"/> and complete lines 27 through 29, and lines 33 and 34.				
	27	Unrestricted net assets		27	
	28	Temporarily restricted net assets		28	
	29	Permanently restricted net assets		29	
	Organizations that do not follow SFAS 117, check here <input type="checkbox"/> and complete lines 30 through 34.				
	30	Capital stock or trust principal, or current funds		30	
	31	Paid-in or capital surplus, or land, building, or equipment fund		31	
	32	Retained earnings, endowment, accumulated income, or other funds	40,731	32	137,144
33	Total net assets or fund balances	40,731	33	137,144	
34	Total liabilities and net assets/fund balances		34		



Part XI Reconciliation of Net Assets

Check if Schedule O contains a response or note to any line in this Part XI

1	Total revenue (must equal Part VIII, column (A), line 12)	1	277,148
2	Total expenses (must equal Part IX, column (A), line 25)	2	232,235
3	Revenue less expenses. Subtract line 2 from line 1	3	44,913
4	Net assets or fund balances at beginning of year (must equal Part X, line 33, column (A))	4	40,731
5	Net unrealized gains (losses) on investments	5	
6	Donated services and use of facilities	6	
7	Investment expenses	7	
8	Prior period adjustments	8	
9	Other changes in net assets or fund balances (explain in Schedule O)	9	51,500
10	Net assets or fund balances at end of year. Combine lines 3 through 9 (must equal Part X, line 33, column (B))	10	137,144

Part XII Financial Statements and Reporting

Check if Schedule O contains a response or note to any line in this Part XII

		Yes	No
1	Accounting method used to prepare the Form 990: <input type="checkbox"/> Cash <input type="checkbox"/> Accrual <input type="checkbox"/> Other _____ If the organization changed its method of accounting from a prior year or checked "Other," explain in Schedule O		
2a	Were the organization's financial statements compiled or reviewed by an independent accountant? If "Yes," check a box below to indicate whether the financial statements for the year were compiled or reviewed on a separate basis, consolidated basis, or both: <input type="checkbox"/> Separate basis <input type="checkbox"/> Consolidated basis <input type="checkbox"/> Both consolidated and separate basis	X	
b	Were the organization's financial statements audited by an independent accountant? If "Yes," check a box below to indicate whether the financial statements for the year were audited on a separate basis, consolidated basis, or both: <input type="checkbox"/> Separate basis <input type="checkbox"/> Consolidated basis <input type="checkbox"/> Both consolidated and separate basis		X
c	If "Yes" to line 2a or 2b, does the organization have a committee that assumes responsibility for oversight of the audit, review, or compilation of its financial statements and selection of an independent accountant? If the organization changed either its oversight process or selection process during the tax year, explain in Schedule O	X	
3a	As a result of a federal award, was the organization required to undergo an audit or audits as set forth in the Single Audit Act and OMB Circular A-133?		X
b	If "Yes," did the organization undergo the required audit or audits? If the organization did not undergo the required audit or audits, explain why in Schedule O and describe any steps taken to undergo such audits.		X

SCHEDULE A
(Form 990 or 990-EZ)

Public Charity Status and Public Support

Complete if the organization is a section 501(c)(3) organization or a section 4947(a)(1) nonexempt charitable trust.

2014

Department of the Treasury
Internal Revenue Service

▶ Attach to Form 990 or Form 990-EZ. ▶ See separate instructions.

Name of the organization

Arctic Access, Inc.

Employer identification number
92-0147951

Part I Reason for Public Charity Status (All organizations must complete this part.) See instructions.

The organization is not a private foundation because it is: (For lines 1 through 11, check only one box.)

- 1 A church, convention of churches, or association of churches described in **section 170(b)(1)(A)(i)**.
- 2 A school described in **section 170(b)(1)(A)(ii)**. (Attach Schedule E.)
- 3 A hospital or a cooperative hospital service organization described in **section 170(b)(1)(A)(iii)**.
- 4 A medical research organization operated in conjunction with a hospital described in **section 170(b)(1)(A)(iii)**. Enter the hospital's name, city, and state: _____
- 5 An organization operated for the benefit of a college or university owned or operated by a governmental unit described in **section 170(b)(1)(A)(iv)**. (Complete Part II.)
- 6 A federal, state, or local government or governmental unit described in **section 170(b)(1)(A)(v)**.
- 7 An organization that normally receives a substantial part of its support from a governmental unit or from the general public described in **section 170(b)(1)(A)(vi)**. (Complete Part II.)
- 8 A community trust described in **section 170(b)(1)(A)(vi)**. (Complete Part II.)
- 9 An organization that normally receives: (1) more than 33 1/3% of its support from contributions, membership fees, and gross receipts from activities related to its exempt functions—subject to certain exceptions, and (2) no more than 33 1/3% of its support from gross investment income and unrelated business taxable income (less section 511 tax) from businesses acquired by the organization after June 30, 1975. See **section 509(a)(2)**. (Complete Part III.)
- 10 An organization organized and operated exclusively to test for public safety. See **section 509(a)(4)**.
- 11 An organization organized and operated exclusively for the benefit of, to perform the functions of, or to carry out the purposes of one or more publicly supported organizations described in section 509(a)(1) or section 509(a)(2). See **section 509(a)(3)**. Check the box that describes the type of supporting organization and complete lines 11e through 11h.
 - a Type I b Type II c Type III—Functionally integrated d Type III—Other
 - e By checking this box, I certify that the organization is not controlled directly or indirectly by one or more disqualified persons other than foundation managers and other than one or more publicly supported organizations described in section 509(a)(1) or section 509(a)(2).
 - f If the organization received a written determination from the IRS that it is a Type I, Type II, or Type III supporting organization, check this box
 - g Since August 17, 2006, has the organization accepted any gift or contribution from any of the following persons?
 - (i) A person who directly or indirectly controls, either alone or together with persons described in (ii) and (iii) below, the governing body of the supported organization?

	Yes	No
11g(i)		
11g(ii)		
11g(iii)		
 - (ii) A family member of a person described in (i) above?

	Yes	No
11g(ii)		
11g(iii)		
 - (iii) A 35% controlled entity of a person described in (i) or (ii) above?

	Yes	No
11g(iii)		
 - h Provide the following information about the supported organization(s).

(i) Name of supported organization	(ii) EIN	(iii) Type of organization (described on lines 1–9 above or IRC section (see instructions))	(iv) Is the organization in col (i) listed in your governing document?		(v) Did you notify the organization in col (i) of your support?		(vi) Is the organization in col (i) organized in the U S ?		(vii) Amount of support
			Yes	No	Yes	No	Yes	No	
(A)									
(B)		NONE							
(C)									
(D)									
(E)									
Total									

Part III Support Schedule for Organizations Described in Section 509(a)(2)

(Complete only if you checked the box on line 9 of Part I or if the organization failed to qualify under Part II. If the organization fails to qualify under the tests listed below, please complete Part II.)

Section A. Public Support

Table with 7 columns: 2010, 2011, 2012, 2013, 2014, Total. Rows include: 1 Gifts, grants, contributions, and membership fees received; 2 Gross receipts from admissions, merchandise sold or services performed; 3 Gross receipts from activities that are not an unrelated trade or business; 4 Tax revenues levied for the organization's benefit; 5 The value of services or facilities furnished by a governmental unit; 6 Total. Add lines 1 through 5; 7a Amounts included on lines 1, 2, and 3 received from disqualified persons; 7b Amounts included on lines 2 and 3 received from other than disqualified persons; 7c Add lines 7a and 7b; 8 Public support (Subtract line 7c from line 6).

Section B. Total Support

Table with 7 columns: 2010, 2011, 2012, 2013, 2014, Total. Rows include: 9 Amounts from line 6; 10a Gross income from interest, dividends, payments received on securities loans, rents, royalties and income from similar sources; 10b Unrelated business taxable income (less section 511 taxes) from businesses acquired after June 30, 1975; 10c Add lines 10a and 10b; 11 Net income from unrelated business activities not included in line 10b; 12 Other income. Do not include gain or loss from the sale of capital assets; 13 Total support. (Add lines 9, 10c, 11, and 12.); 14 First five years. If the Form 990 is for the organization's first, second, third, fourth, or fifth tax year as a section 501(c)(3) organization, check this box and stop here.

Section C. Computation of Public Support Percentage

Table with 3 columns: Line number, Percentage, and Unit. Row 15: Public support percentage for 2011 (line 8, column (f) divided by line 13, column (f)) 15 100 %; Row 16: Public support percentage from 2010 Schedule A, Part III, line 15 16 100 %

Section D. Computation of Investment Income Percentage

Table with 3 columns: Line number, Percentage, and Unit. Row 17: Investment income percentage for 2011 (line 10c, column (f) divided by line 13, column (f)) 17 %; Row 18: Investment income percentage from 2010 Schedule A, Part III, line 17 18 %

19a 33 1/3% support tests-2011. If the organization did not check the box on line 14, and line 15 is more than 33 1/3%, and line 17 is not more than 33 1/3%, check this box and stop here. The organization qualifies as a publicly supported organization

b 33 1/3% support tests-2010. If the organization did not check a box on line 14 or line 19a, and line 16 is more than 33 1/3%, and line 18 is not more than 33 1/3%, check this box and stop here. The organization qualifies as a publicly supported organization

20 Private foundation. If the organization did not check a box on line 14, 19a, or 19b, check this box and see instructions

MZ

**SCHEDULE J
(Form 990)**

Compensation Information

OMB No 1545-0047

For certain Officers, Directors, Trustees, Key Employees, and Highest Compensated Employees

2014

Department of the Treasury
Internal Revenue Service

▶ Attach to Form 990. To be completed by organizations that answered "Yes" to Form 990, Part IV, line 23.

Inspection

Name of the organization
Arctic Access, Inc.

Employer identification number
92-0147951

Part I Questions Regarding Compensation

- 1a** Check the appropriate box(es) if the organization provided any of the following to or for a person listed in Form 990, Part VII, Section A, line 1a. Complete Part III to provide any relevant information regarding these items.
- | | |
|--|--|
| <input type="checkbox"/> First-class or charter travel | <input type="checkbox"/> Housing allowance or residence for personal use |
| <input type="checkbox"/> Travel for companions | <input type="checkbox"/> Payments for business use of personal residence |
| <input type="checkbox"/> Tax indemnification and gross-up payments | <input type="checkbox"/> Health or social club dues or initiation fees |
| <input type="checkbox"/> Discretionary spending account | <input type="checkbox"/> Personal services (e.g., maid, chauffeur, chef) |

Per Diem

- b** If line 1a is checked, did the organization follow a written policy regarding payment or reimbursement or provision of all of the expenses described above? If "No," complete Part III to explain
- 2** Did the organization require substantiation prior to reimbursing or allowing expenses incurred by all officers, directors, trustees, and the CEO/Executive Director, regarding the items checked in line 1a?

- 3** Indicate which, if any, of the following the organization uses to establish the compensation of the organization's CEO/Executive Director. Check all that apply.
- | | |
|--|---|
| <input type="checkbox"/> Compensation committee | <input type="checkbox"/> Written employment contract |
| <input type="checkbox"/> Independent compensation consultant | <input checked="" type="checkbox"/> Compensation survey or study |
| <input type="checkbox"/> Form 990 of other organizations | <input checked="" type="checkbox"/> Approval by the board or compensation committee |

- 4** During the year, did any person listed in Form 990, Part VII, Section A, line 1a:
- a** Receive a severance payment or change of control payment?
- b** Participate in, or receive payment from, a supplemental nonqualified retirement plan?
- c** Participate in, or receive payment from, an equity-based compensation arrangement?
- If "Yes" to any of lines 4a-c, list the persons and provide the applicable amounts for each item in Part III.

Only 501(c)(3) and 501(c)(4) organizations must complete lines 5-8.

- 5** For persons listed in Form 990, Part VII, Section A, line 1a, did the organization pay or accrue any compensation contingent on the revenues of:
- a** The organization?
- b** Any related organization?
- If "Yes" to line 5a or 5b, describe in Part III.
- 6** For persons listed in Form 990, Part VII, Section A, line 1a, did the organization pay or accrue any compensation contingent on the net earnings of:
- a** The organization?
- b** Any related organization?
- If "Yes" to line 6a or 6b, describe in Part III.
- 7** For persons listed in Form 990, Part VII, Section A, line 1a, did the organization provide any non-fixed payments not described in lines 5 and 6? If "Yes," describe in Part III
- 8** Were any amounts reported in Form 990, Part VII, paid or accrued pursuant to a contract that was subject to the initial contract exception described in Regs. section 53.4958-4(a)(3)? If "Yes," describe in Part III

	Yes	No
1a	X	
1b		
2	X	
3		
4a		X
4b		X
4c		X
5a		X
5b		X
6a		X
6b		X
7		X
8		X

SCHEDULE O
(Form 990)

92-0147951

OMB No 15-2014/9

Supplemental Information to Form 990

▶ Attach to Form 990. To be completed by organizations to provide additional information for responses to specific questions for the Form 990 or to provide any additional information.

XXXXXX08XXXXXX

Open to Public Inspection

Employer identification number

At Access, Inc.

92-0147951

COPIES OF 990 MAILED TO:

Dept. of the Treasury
Internal Revenue Service
Ogden, Utah 84201-0027

Dept. of Revenue
Tax Division
PO Box 110420
Juneau, Alaska 99811-5506

Part XI, line 9
Adjustments to prior year net assets in the amount of \$ 51,500.

Arctic Access, Inc. Board Members - 2015

Name	Address	Phone/Fax	e-mail
Michael Atoruk	P.O. Box 81 Kiana, AK 99749	475-2299	atorukimc@nutek.net <small>Board Chair Primary Consumer</small>
Dale B. Stotts	P.O. Box 61 Kiana, AK 99749	c- 444-2841 w - 475-2252, fax -2180	tribedirector@katyaag.org stottedale68@gmail.com <small>Treasurer Primary Consumer;</small>
Reuben Mixsooke	139 Sharon Dr., Box 139 Unalakleet, AK 99684	c- 624-5710 fax - 624-5104	mmixske@yahoo.com <small>Primary Consumer</small>



FEDERAL SINGLE AUDIT CERTIFICATION - 2013

Grantee: Arctic Access, Inc.
11840 Moose Road
Anchorage, AK 99516

1. Please provide the Tax Identification Number for this grantee: 92-0147951

2. Please indicate what type of organization this grantee is:

- | | |
|--|--|
| <input type="checkbox"/> Municipality / City / Borough | <input type="checkbox"/> Non-Profit – 501(c)(<u>3</u>) (Specify type of non-profit organization, as designated by the IRS) |
| <input type="checkbox"/> Tribal Government | <input type="checkbox"/> Housing / Port Authority |
| <input type="checkbox"/> School / School District | <input type="checkbox"/> University / College |
| <input type="checkbox"/> Non-U S based entity | <input type="checkbox"/> State or Federal government agency |
| <input type="checkbox"/> For-Profit Organization | <input type="checkbox"/> Other: _____ |

3. The above grantee assures the State of Alaska that the total amount of federal financial assistance¹ **expended during the grantee's fiscal year 2013:**

- Was \$500,000 or more
- Was **LESS** than \$500,000

If the fiscal year 2013 federal expenditures are \$500,000 or more, the grantee must submit the appropriate number of copies of their federal single audit – **no later than nine months after the grantee's fiscal year end** – to the State of Alaska's Single Audit Coordinator²

Certification

I hereby certify that the information on this form is true and correct to the best of my knowledge.

Print Name: Audrey P. Ames

Title: EXEC. DIR.

Signature: Audrey P. Ames

Date: 2-14-2014

¹ Total federal assistance includes federal awards from ALL sources. This includes federal financial assistance passed through the State of Alaska, federal funds passed through all other organizations, and funds received directly from federal agencies. Federal assistance includes grants, loans, loan guarantees, property (including donated surplus property), cooperative agreements, interest subsidies, insurance, food commodities, direct appropriations and other assistance. Please refer to OMB Circular A-133 for further details and information.

² See enclosed flyer, "Submitting Single Audits" for mailing instructions and guidance on the number of copies of the single audit reporting package to submit to the State of Alaska Single Audit Coordinator's office.



August 28, 2015

This is to certify that I have reviewed the 990 Federal Form schedules and statements for our Arctic Access tax year beginning July 1, 2014, and ending June 30, 2015, and to the best of my knowledge and belief, it is true, correct and complete.

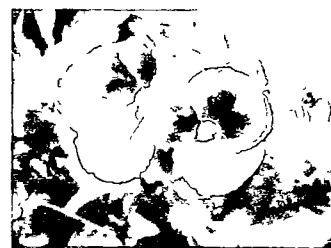
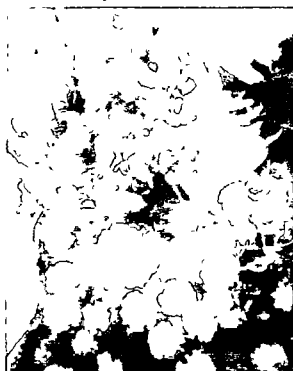
Dale Stotts, Treasurer
Arctic Access, Inc.
Board of Directors

August 28, 2015

Date

KOBUK RIVER GARDEN PROJECT 2015

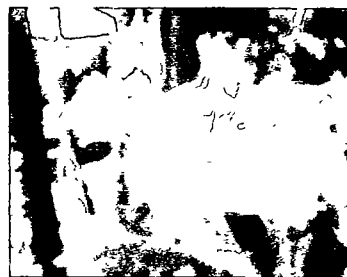
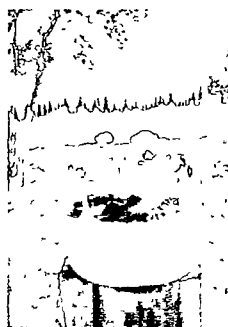
Photos by Linnea Wik, Seth Kantner, & Don Williams



Gardeners selecting seedlings in Kiana, Ambler & Noorvik

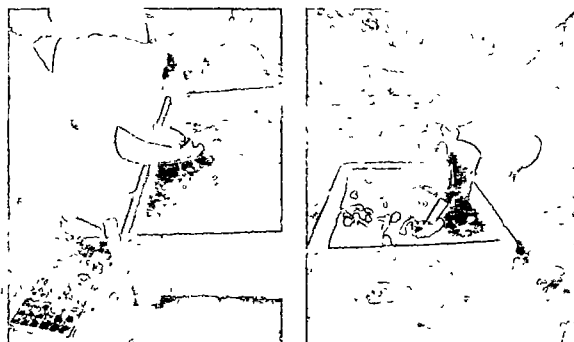


Anything can be a planter!

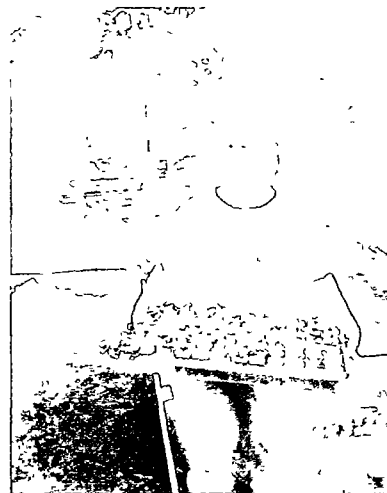


Field-testing "cold hardy" crops in Deering (it snowed a few hours later)





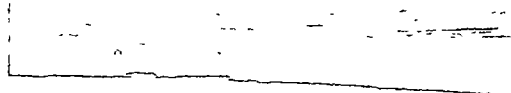
Grandmothers and granddaughters gardening together, Kiana & Noorvik



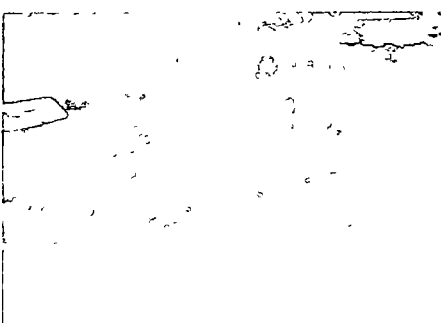
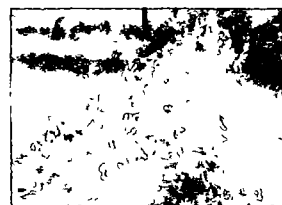
Homegrown turnip seedlings, Kiana



First-time gardeners learning in Deering



Ambler gardens, Fall 2015





Planting raised garden boxes & new strawberry bed, Ambler

