



See a Social Security Number? Say Something!  
Report Privacy Problems to <https://public.resource.org/privacy>  
Or call the IRS Identity Theft Hotline at 1-800-908-4490



Form **990**Department of the Treasury  
Internal Revenue Service**Return of Organization Exempt From Income Tax**

Under section 501(c), 527, or 4947(a)(1) of the Internal Revenue Code (except private foundations)

▶ Do not enter Social Security numbers on this form as it may be made public.

▶ Information about Form 990 and its instructions is at [www.irs.gov/form990](http://www.irs.gov/form990).

OMB No. 1545-0047

**2013**Open to Public  
Inspection**A For the 2013 calendar year, or tax year beginning** , 2013, and ending , 20**B** Check if applicable

<input type="checkbox"/>	Address change
<input type="checkbox"/>	Name change
<input type="checkbox"/>	Initial return
<input type="checkbox"/>	Terminated
<input type="checkbox"/>	Amended return
<input type="checkbox"/>	Application pending

**C** Name of organization

CALISTA HERITAGE FOUNDATION, INC.

## Doing Business As

Number and street (or P O box if mail is not delivered to street address)

Room/suite

301 CALISTA COURT, SUITE A

City or town, state or province, country, and ZIP or foreign postal code

ANCHORAGE, AK 99518

**F** Name and address of principal officer**D** Employer identification number

92-0088631

**E** Telephone number

(907) 279-5516

**G** Gross receipts \$

598,067.

**H(a)** Is this a group return for subordinates?Yes ☐ No ☒**H(b)** Are all subordinates included?Yes ☐ No ☐

If "No," attach a list (see instructions)

**H(c)** Group exemption number

N/A

**I** Tax-exempt status ☒ 501(c)(3) ☐ 501(c) ( ) ◀ (insert no) ☐ 4947(a)(1) or ☐ 527**J** Website: ▶ N/A**K** Form of organization ☒ Corporation ☐ Trust ☐ Association ☐ Other ▶**L** Year of formation 1980**M** State of legal domicile AK**Part I Summary**

Activities & Governance	1	Briefly describe the organization's mission or most significant activities		TO PROVIDE FINANCIAL ASSISTANCE TO ALASKAN NATIVES AND TO ENABLE THE RECIPIENTS TO PARTICIPATE IN CONTINUING EDUCATIONAL ACTIVITIES THAT WILL IMPROVE THE STATUS OF ALASKA NATIVES.	
	2	Check this box <input type="checkbox"/> if the organization discontinued its operations or disposed of more than 25% of its net assets			
	3	Number of voting members of the governing body (Part VI, line 1a)	3	7.	
	4	Number of independent voting members of the governing body (Part VI, line 1b)	4	5.	
	5	Total number of individuals employed in calendar year 2013 (Part V, line 2a)	5	5.	
	6	Total number of volunteers (estimate if necessary)	6		
	7a	Total unrelated business revenue from Part VIII, column (C), line 12	7a	0	
7b	Net unrelated business taxable income from Form 990-T, line 34	7b	0		
Revenue	8	Contributions and grants (Part VIII, line 1h)	Prior Year	Current Year	
	9	Program service revenue (Part VIII, line 2g)	687,325.	574,130.	
	10	Investment income (Part VIII, column (A), lines 3, 4, and 7d)	0	0	
	11	Other revenue (Part VIII, column (A), lines 5, 6d, 8c, 9c, 10c, and 11e)	6,790.	8,120.	
	12	Total revenue - add lines 8 through 11 (must equal Part VIII, column (A), line 12)	-9,122.	-17,504.	
Expenses	13	Grants and similar amounts paid (Part IX, column (A), lines 1-3)	685,133.	564,746.	
	14	Benefits paid to or for members (Part IX, column (A), line 4)	378,783.	384,136.	
	15	Salaries, other compensation, employee benefits (Part IX, column (A), lines 5-10)	0	0	
	16a	Professional fundraising fees (Part IX, column (A), line 11e)	371,102.	168,011.	
	b	Total fundraising expenses (Part IX, column (D), line 25) ▶	0	0	
	17	Other expenses (Part IX, column (A), lines 11a-11d, 11f-24e)	125,365.	84,117.	
	18	Total expenses Add lines 13-17 (must equal Part IX, column (A), line 25)	875,250.	636,264.	
Net Assets or Fund Balances	19	Revenue less expenses Subtract line 18 from line 12	-190,117.	-71,518.	
	20	Total assets (Part X, line 16)	Beginning of Current Year	End of Year	
	21	Total liabilities (Part X, line 26)	2,203,272.	2,156,206.	
	22	Net assets or fund balances Subtract line 21 from line 20	0	0	

**Part II Signature Block**

Under penalties of perjury, I declare that I have examined this return, including accompanying schedules and statements, and to the best of my knowledge and belief, it is true, correct, and complete. Declaration of preparer (other than officer) is based on all information of which preparer has any knowledge.

Sign Here	Signature of officer	Date		8/1/14	
	Type or print name and title	Rea Barille Real Estate			
Paid Preparer Use Only	Print/Type preparer's name	Preparer's signature	Date	Check <input type="checkbox"/> if self-employed	PTIN
	JULIE A SCHRECENGOST	Julie Sch	7/31/14		P00146956
	Firm's name ▶ KPMG LLP	Firm's EIN ▶ 13-5565207			
	Firm's address ▶ 701 WEST 8TH AVENUE, SUITE 600 ANCHORAGE, AK 99501	Phone no	907-265-1200		
May the IRS discuss this return with the preparer shown above? (see instructions)					
<input checked="" type="checkbox"/> Yes <input type="checkbox"/> No					

For Paperwork Reduction Act Notice, see the separate instructions.

Form **990** (2013)

20

**Part III** Statement of Program Service AccomplishmentsCheck if Schedule O contains a response or note to any line in this Part III ☐ Yes ☒ No**1** Briefly describe the organization's mission

ATTACHMENT 1

**2** Did the organization undertake any significant program services during the year which were not listed on the prior Form 990 or 990-EZ? ☐ Yes ☒ No

If "Yes," describe these new services on Schedule O

**3** Did the organization cease conducting, or make significant changes in how it conducts, any program services? ☐ Yes ☒ No

If "Yes," describe these changes on Schedule O

**4** Describe the organization's program service accomplishments for each of its three largest program services, as measured by expenses. Section 501(c)(3) and 501(c)(4) organizations are required to report the amount of grants and allocations to others, the total expenses, and revenue, if any, for each program service reported**4a** (Code \_\_\_\_\_) (Expenses \$ 493,386 including grants of \$ 384,136) (Revenue \$ \_\_\_\_\_)

SCHOLARSHIP GRANTS

**4b** (Code \_\_\_\_\_) (Expenses \$ \_\_\_\_\_ including grants of \$ \_\_\_\_\_) (Revenue \$ \_\_\_\_\_)**4c** (Code \_\_\_\_\_) (Expenses \$ \_\_\_\_\_ including grants of \$ \_\_\_\_\_) (Revenue \$ \_\_\_\_\_)**4d** Other program services (Describe in Schedule O )

(Expenses \$ \_\_\_\_\_ including grants of \$ \_\_\_\_\_) (Revenue \$ \_\_\_\_\_)

**4e** Total program service expenses **▶** 493,386.

**Part IV Checklist of Required Schedules**

	Yes	No
1 Is the organization described in section 501(c)(3) or 4947(a)(1) (other than a private foundation)? If "Yes," complete Schedule A . . . . .	1	X
2 Is the organization required to complete Schedule B, Schedule of Contributors (see instructions)? . . . . .	2	X
3 Did the organization engage in direct or indirect political campaign activities on behalf of or in opposition to candidates for public office? If "Yes," complete Schedule C, Part I . . . . .	3	X
4 <b>Section 501(c)(3) organizations.</b> Did the organization engage in lobbying activities, or have a section 501(h) election in effect during the tax year? If "Yes," complete Schedule C, Part II . . . . .	4	X
5 Is the organization a section 501(c)(4), 501(c)(5), or 501(c)(6) organization that receives membership dues, assessments, or similar amounts as defined in Revenue Procedure 98-19? If "Yes," complete Schedule C, Part III . . . . .	5	X
6 Did the organization maintain any donor advised funds or any similar funds or accounts for which donors have the right to provide advice on the distribution or investment of amounts in such funds or accounts? If "Yes," complete Schedule D, Part I . . . . .	6	X
7 Did the organization receive or hold a conservation easement, including easements to preserve open space, the environment, historic land areas, or historic structures? If "Yes," complete Schedule D, Part II . . . . .	7	X
8 Did the organization maintain collections of works of art, historical treasures, or other similar assets? If "Yes," complete Schedule D, Part III . . . . .	8	X
9 Did the organization report an amount in Part X, line 21, for escrow or custodial account liability, serve as a custodian for amounts not listed in Part X, or provide credit counseling, debt management, credit repair, or debt negotiation services? If "Yes," complete Schedule D, Part IV . . . . .	9	X
10 Did the organization, directly or through a related organization, hold assets in temporarily restricted endowments, permanent endowments, or quasi-endowments? If "Yes," complete Schedule D, Part V . . . . .	10	X
11 If the organization's answer to any of the following questions is "Yes," then complete Schedule D, Parts VI, VII, VIII, IX, or X as applicable		
a Did the organization report an amount for land, buildings, and equipment in Part X, line 10? If "Yes," complete Schedule D, Part VI . . . . .	11a	X
b Did the organization report an amount for investments-other securities in Part X, line 12 that is 5% or more of its total assets reported in Part X, line 16? If "Yes," complete Schedule D, Part VII . . . . .	11b	X
c Did the organization report an amount for investments-program related in Part X, line 13 that is 5% or more of its total assets reported in Part X, line 16? If "Yes," complete Schedule D, Part VIII . . . . .	11c	X
d Did the organization report an amount for other assets in Part X, line 15 that is 5% or more of its total assets reported in Part X, line 16? If "Yes," complete Schedule D, Part IX . . . . .	11d	X
e Did the organization report an amount for other liabilities in Part X, line 25? If "Yes," complete Schedule D, Part X . . . . .	11e	X
f Did the organization's separate or consolidated financial statements for the tax year include a footnote that addresses the organization's liability for uncertain tax positions under FIN 48 (ASC 740)? If "Yes," complete Schedule D, Part X . . . . .	11f	X
12a Did the organization obtain separate, independent audited financial statements for the tax year? If "Yes," complete Schedule D, Parts XI and XII . . . . .	12a	X
b Was the organization included in consolidated, independent audited financial statements for the tax year? If "Yes," and if the organization answered "No" to line 12a, then completing Schedule D, Parts XI and XII is optional . . . . .	12b	X
13 Is the organization a school described in section 170(b)(1)(A)(ii)? If "Yes," complete Schedule E . . . . .	13	X
14a Did the organization maintain an office, employees, or agents outside of the United States? . . . . .	14a	X
b Did the organization have aggregate revenues or expenses of more than \$10,000 from grantmaking, fundraising, business, investment, and program service activities outside the United States, or aggregate foreign investments valued at \$100,000 or more? If "Yes," complete Schedule F, Parts I and IV . . . . .	14b	X
15 Did the organization report on Part IX, column (A), line 3, more than \$5,000 of grants or other assistance to or for any foreign organization? If "Yes," complete Schedule F, Parts II and IV . . . . .	15	X
16 Did the organization report on Part IX, column (A), line 3, more than \$5,000 of aggregate grants or other assistance to or for foreign individuals? If "Yes," complete Schedule F, Parts III and IV . . . . .	16	X
17 Did the organization report a total of more than \$15,000 of expenses for professional fundraising services on Part IX, column (A), lines 6 and 11e? If "Yes," complete Schedule G, Part I (see instructions) . . . . .	17	X
18 Did the organization report more than \$15,000 total of fundraising event gross income and contributions on Part VIII, lines 1c and 8a? If "Yes," complete Schedule G, Part II . . . . .	18	X
19 Did the organization report more than \$15,000 of gross income from gaming activities on Part VIII, line 9a? If "Yes," complete Schedule G, Part III . . . . .	19	X
20a Did the organization operate one or more hospital facilities? If "Yes," complete Schedule H . . . . .	20a	X
b If "Yes" to line 20a, did the organization attach a copy of its audited financial statements to this return? . . . . .	20b	

**Part IV Checklist of Required Schedules (continued)**

	Yes	No
<b>21</b> Did the organization report more than \$5,000 of grants or other assistance to any domestic organization or government on Part IX, column (A), line 1? <i>If "Yes," complete Schedule I, Parts I and II . . . . .</i>		X
<b>22</b> Did the organization report more than \$5,000 of grants or other assistance to individuals in the United States on Part IX, column (A), line 2? <i>If "Yes," complete Schedule I, Parts I and III . . . . .</i>	X	
<b>23</b> Did the organization answer "Yes" to Part VII, Section A, line 3, 4, or 5 about compensation of the organization's current and former officers, directors, trustees, key employees, and highest compensated employees? <i>If "Yes," complete Schedule J . . . . .</i>		X
<b>24 a</b> Did the organization have a tax-exempt bond issue with an outstanding principal amount of more than \$100,000 as of the last day of the year, that was issued after December 31, 2002? <i>If "Yes," answer lines 24b through 24d and complete Schedule K. If "No," go to line 25a. . . . .</i>		X
<b>24 b</b> Did the organization invest any proceeds of tax-exempt bonds beyond a temporary period exception? . . . . .		
<b>24 c</b> Did the organization maintain an escrow account other than a refunding escrow at any time during the year to defease any tax-exempt bonds? . . . . .		
<b>24 d</b> Did the organization act as an "on behalf of" issuer for bonds outstanding at any time during the year? . . . . .		
<b>25 a</b> <b>Section 501(c)(3) and 501(c)(4) organizations.</b> Did the organization engage in an excess benefit transaction with a disqualified person during the year? <i>If "Yes," complete Schedule L, Part I. . . . .</i>		X
<b>25 b</b> Is the organization aware that it engaged in an excess benefit transaction with a disqualified person in a prior year, and that the transaction has not been reported on any of the organization's prior Forms 990 or 990-EZ? <i>If "Yes," complete Schedule L, Part I. . . . .</i>		X
<b>26</b> Did the organization report any amount on Part X, line 5, 6, or 22 for receivables from or payable to any current or former officers, directors, trustees, key employees, highest compensated employees, or disqualified persons? If so, complete Schedule L, Part II. . . . .		X
<b>27</b> Did the organization provide a grant or other assistance to an officer, director, trustee, key employee, substantial contributor or employee thereof, a grant selection committee member, or to a 35% controlled entity or family member of any of these persons? <i>If "Yes," complete Schedule L, Part III. . . . .</i>		X
<b>28</b> Was the organization a party to a business transaction with one of the following parties (see Schedule L, Part IV instructions for applicable filing thresholds, conditions, and exceptions)		
<b>28 a</b> A current or former officer, director, trustee, or key employee? <i>If "Yes," complete Schedule L, Part IV. . . . .</i>		X
<b>28 b</b> A family member of a current or former officer, director, trustee, or key employee? <i>If "Yes," complete Schedule L, Part IV. . . . .</i>		X
<b>28 c</b> An entity of which a current or former officer, director, trustee, or key employee (or a family member thereof) was an officer, director, trustee, or direct or indirect owner? <i>If "Yes," complete Schedule L, Part IV. . . . .</i>		X
<b>29</b> Did the organization receive more than \$25,000 in non-cash contributions? <i>If "Yes," complete Schedule M . . . . .</i>		X
<b>30</b> Did the organization receive contributions of art, historical treasures, or other similar assets, or qualified conservation contributions? <i>If "Yes," complete Schedule M . . . . .</i>		X
<b>31</b> Did the organization liquidate, terminate, or dissolve and cease operations? <i>If "Yes," complete Schedule N, Part I. . . . .</i>		X
<b>32</b> Did the organization sell, exchange, dispose of, or transfer more than 25% of its net assets? <i>If "Yes," complete Schedule N, Part II . . . . .</i>		X
<b>33</b> Did the organization own 100% of an entity disregarded as separate from the organization under Regulations sections 301.7701-2 and 301.7701-3? <i>If "Yes," complete Schedule R, Part I . . . . .</i>		X
<b>34</b> Was the organization related to any tax-exempt or taxable entity? <i>If "Yes," complete Schedule R, Part II, III, or IV, and Part V, line 1 . . . . .</i>	X	
<b>35 a</b> Did the organization have a controlled entity within the meaning of section 512(b)(13)? . . . . .		X
<b>35 b</b> If "Yes" to line 35a, did the organization receive any payment from or engage in any transaction with a controlled entity within the meaning of section 512(b)(13)? <i>If "Yes," complete Schedule R, Part V, line 2. . . . .</i>		
<b>36</b> <b>Section 501(c)(3) organizations.</b> Did the organization make any transfers to an exempt non-charitable related organization? <i>If "Yes," complete Schedule R, Part V, line 2 . . . . .</i>		X
<b>37</b> Did the organization conduct more than 5% of its activities through an entity that is not a related organization and that is treated as a partnership for federal income tax purposes? <i>If "Yes," complete Schedule R, Part VI. . . . .</i>		X
<b>38</b> Did the organization complete Schedule O and provide explanations in Schedule O for Part VI, lines 11b and 19? <b>Note.</b> All Form 990 filers are required to complete Schedule O . . . . .	X	

**Part V Statements Regarding Other IRS Filings and Tax Compliance**Check if Schedule O contains a response or note to any line in this Part V ☐

		Yes	No
<b>1a</b> Enter the number reported in Box 3 of Form 1096. Enter -0- if not applicable. . . . .	<b>1a</b> 19		
<b>b</b> Enter the number of Forms W-2G included in line 1a. Enter -0- if not applicable. . . . .	<b>1b</b> 0		
<b>c</b> Did the organization comply with backup withholding rules for reportable payments to vendors and reportable gaming (gambling) winnings to prize winners? . . . . .	<b>1c</b>		
<b>2a</b> Enter the number of employees reported on Form W-3, Transmittal of Wage and Tax Statements, filed for the calendar year ending with or within the year covered by this return. . . . .	<b>2a</b> 5		
<b>b</b> If at least one is reported on line 2a, did the organization file all required federal employment tax returns? <b>Note.</b> If the sum of lines 1a and 2a is greater than 250, you may be required to e-file (see instructions). . . . .	<b>2b</b>	X	
<b>3a</b> Did the organization have unrelated business gross income of \$1,000 or more during the year? . . . . .	<b>3a</b>		X
<b>b</b> If "Yes," has it filed a Form 990-T for this year? If "No" to line 3b, provide an explanation in Schedule O . . . . .	<b>3b</b>		
<b>4a</b> At any time during the calendar year, did the organization have an interest in, or a signature or other authority over, a financial account in a foreign country (such as a bank account, securities account, or other financial account)? . . . . .	<b>4a</b>		X
<b>b</b> If "Yes," enter the name of the foreign country <b>▶</b> _____ See instructions for filing requirements for Form TD F 90-22.1, Report of Foreign Bank and Financial Accounts . . . . .			
<b>5a</b> Was the organization a party to a prohibited tax shelter transaction at any time during the tax year? . . . . .	<b>5a</b>		X
<b>b</b> Did any taxable party notify the organization that it was or is a party to a prohibited tax shelter transaction? . . . . .	<b>5b</b>		X
<b>c</b> If "Yes" to line 5a or 5b, did the organization file Form 8886-T? . . . . .	<b>5c</b>		
<b>6a</b> Does the organization have annual gross receipts that are normally greater than \$100,000, and did the organization solicit any contributions that were not tax deductible as charitable contributions? . . . . .	<b>6a</b>		X
<b>b</b> If "Yes," did the organization include with every solicitation an express statement that such contributions or gifts were not tax deductible? . . . . .	<b>6b</b>		
<b>7 Organizations that may receive deductible contributions under section 170(c).</b>			
<b>a</b> Did the organization receive a payment in excess of \$75 made partly as a contribution and partly for goods and services provided to the payor? . . . . .	<b>7a</b>	X	
<b>b</b> If "Yes," did the organization notify the donor of the value of the goods or services provided? . . . . .	<b>7b</b>	X	
<b>c</b> Did the organization sell, exchange, or otherwise dispose of tangible personal property for which it was required to file Form 8282? . . . . .	<b>7c</b>		X
<b>d</b> If "Yes," indicate the number of Forms 8282 filed during the year. . . . .	<b>7d</b>		
<b>e</b> Did the organization receive any funds, directly or indirectly, to pay premiums on a personal benefit contract? . . . . .	<b>7e</b>		X
<b>f</b> Did the organization, during the year, pay premiums, directly or indirectly, on a personal benefit contract? . . . . .	<b>7f</b>		X
<b>g</b> If the organization received a contribution of qualified intellectual property, did the organization file Form 8899 as required? . . . . .	<b>7g</b>		X
<b>h</b> If the organization received a contribution of cars, boats, airplanes, or other vehicles, did the organization file a Form 1098-C? . . . . .	<b>7h</b>		X
<b>8 Sponsoring organizations maintaining donor advised funds and section 509(a)(3) supporting organizations.</b> Did the supporting organization, or a donor advised fund maintained by a sponsoring organization, have excess business holdings at any time during the year? . . . . .	<b>8</b>		
<b>9 Sponsoring organizations maintaining donor advised funds.</b>			
<b>a</b> Did the organization make any taxable distributions under section 4966? . . . . .	<b>9a</b>		
<b>b</b> Did the organization make a distribution to a donor, donor advisor, or related person? . . . . .	<b>9b</b>		
<b>10 Section 501(c)(7) organizations.</b> Enter			
<b>a</b> Initiation fees and capital contributions included on Part VIII, line 12 . . . . .	<b>10a</b>		
<b>b</b> Gross receipts, included on Form 990, Part VIII, line 12, for public use of club facilities . . . . .	<b>10b</b>		
<b>11 Section 501(c)(12) organizations.</b> Enter			
<b>a</b> Gross income from members or shareholders . . . . .	<b>11a</b>		
<b>b</b> Gross income from other sources (Do not net amounts due or paid to other sources against amounts due or received from them) . . . . .	<b>11b</b>		
<b>12a Section 4947(a)(1) non-exempt charitable trusts.</b> Is the organization filing Form 990 in lieu of Form 1041? . . . . .	<b>12a</b>		
<b>b</b> If "Yes," enter the amount of tax-exempt interest received or accrued during the year . . . . .	<b>12b</b>		
<b>13 Section 501(c)(29) qualified nonprofit health insurance issuers.</b>			
<b>a</b> Is the organization licensed to issue qualified health plans in more than one state? . . . . . <b>Note.</b> See the instructions for additional information the organization must report on Schedule O . . . . .	<b>13a</b>		
<b>b</b> Enter the amount of reserves the organization is required to maintain by the states in which the organization is licensed to issue qualified health plans . . . . .	<b>13b</b>		
<b>c</b> Enter the amount of reserves on hand . . . . .	<b>13c</b>		
<b>14a</b> Did the organization receive any payments for indoor tanning services during the tax year? . . . . .	<b>14a</b>		X
<b>b</b> If "Yes," has it filed a Form 720 to report these payments? If "No," provide an explanation in Schedule O . . . . .	<b>14b</b>		

**Part VI Governance, Management, and Disclosure** For each "Yes" response to lines 2 through 7b below, and for a "No" response to line 8a, 8b, or 10b below, describe the circumstances, processes, or changes in Schedule O. See instructions.

Check if Schedule O contains a response or note to any line in this Part VI

☒**Section A. Governing Body and Management**

	Yes	No
<b>1a</b> Enter the number of voting members of the governing body at the end of the tax year . . . . .		
If there are material differences in voting rights among members of the governing body, or if the governing body delegated broad authority to an executive committee or similar committee, explain in Schedule O		
<b>1b</b> Enter the number of voting members included in line 1a, above, who are independent . . . . .		
<b>2</b> Did any officer, director, trustee, or key employee have a family relationship or a business relationship with any other officer, director, trustee, or key employee? . . . . .		X
<b>3</b> Did the organization delegate control over management duties customarily performed by or under the direct supervision of officers, directors, or trustees, or key employees to a management company or other person? . . . . .		X
<b>4</b> Did the organization make any significant changes to its governing documents since the prior Form 990 was filed? . . . . .		X
<b>5</b> Did the organization become aware during the year of a significant diversion of the organization's assets? . . . . .		X
<b>6</b> Did the organization have members or stockholders? . . . . .		X
<b>7a</b> Did the organization have members, stockholders, or other persons who had the power to elect or appoint one or more members of the governing body? . . . . .		X
<b>7b</b> Are any governance decisions of the organization reserved to (or subject to approval by) members, stockholders, or persons other than the governing body? . . . . .		X
<b>8</b> Did the organization contemporaneously document the meetings held or written actions undertaken during the year by the following		
<b>a</b> The governing body? . . . . .	X	
<b>b</b> Each committee with authority to act on behalf of the governing body? . . . . .		
<b>9</b> Is there any officer, director, trustee, or key employee listed in Part VII, Section A, who cannot be reached at the organization's mailing address? If "Yes," provide the names and addresses in Schedule O . . . . .		X

**Section B. Policies** (This Section B requests information about policies not required by the Internal Revenue Code.)

	Yes	No
<b>10a</b> Did the organization have local chapters, branches, or affiliates? . . . . .		X
<b>b</b> If "Yes," did the organization have written policies and procedures governing the activities of such chapters, affiliates, and branches to ensure their operations are consistent with the organization's exempt purposes? . . . . .		
<b>11a</b> Has the organization provided a complete copy of this Form 990 to all members of its governing body before filing the form? . . . . .		X
<b>b</b> Describe in Schedule O the process, if any, used by the organization to review this Form 990		
<b>12a</b> Did the organization have a written conflict of interest policy? If "No," go to line 13 . . . . .	X	
<b>b</b> Were officers, directors, or trustees, and key employees required to disclose annually interests that could give rise to conflicts? . . . . .		X
<b>c</b> Did the organization regularly and consistently monitor and enforce compliance with the policy? If "Yes," describe in Schedule O how this was done . . . . .		X
<b>13</b> Did the organization have a written whistleblower policy? . . . . .	X	
<b>14</b> Did the organization have a written document retention and destruction policy? . . . . .	X	
<b>15</b> Did the process for determining compensation of the following persons include a review and approval by independent persons, comparability data, and contemporaneous substantiation of the deliberation and decision?		
<b>a</b> The organization's CEO, Executive Director, or top management official . . . . .	X	
<b>b</b> Other officers or key employees of the organization . . . . .	X	
If "Yes" to line 15a or 15b, describe the process in Schedule O (see instructions)		
<b>16a</b> Did the organization invest in, contribute assets to, or participate in a joint venture or similar arrangement with a taxable entity during the year? . . . . .		X
<b>b</b> If "Yes," did the organization follow a written policy or procedure requiring the organization to evaluate its participation in joint venture arrangements under applicable federal tax law, and take steps to safeguard the organization's exempt status with respect to such arrangements? . . . . .		

**Section C. Disclosure**

**17** List the states with which a copy of this Form 990 is required to be filed ► AK,

**18** Section 6104 requires an organization to make its Forms 1023 (or 1024 if applicable), 990, and 990-T (Section 501(c)(3)s only) available for public inspection. Indicate how you made these available. Check all that apply.  
☐ Own website ☒ Another's website ☒ Upon request ☐ Other (explain in Schedule O)

**19** Describe in Schedule O whether (and if so, how) the organization made its governing documents, conflict of interest policy, and financial statements available to the public during the tax year

**20** State the name, physical address, and telephone number of the person who possesses the books and records of the organization ► THE FORAKER GROUP 161 KLEVIN STREET, SUITE 101 ANCHORAGE, AK 99508 907-743-1200

**Part VII Compensation of Officers, Directors, Trustees, Key Employees, Highest Compensated Employees, and Independent Contractors**Check if Schedule O contains a response or note to any line in this Part VII. ☐**Section A. Officers, Directors, Trustees, Key Employees, and Highest Compensated Employees****1a** Complete this table for all persons required to be listed. Report compensation for the calendar year ending with or within the organization's tax year.

- List all of the organization's **current** officers, directors, trustees (whether individuals or organizations), regardless of amount of compensation. Enter -0- in columns (D), (E), and (F) if no compensation was paid.
- List all of the organization's **current** key employees, if any. See instructions for definition of "key employee."
- List the organization's five **current** highest compensated employees (other than an officer, director, trustee, or key employee) who received reportable compensation (Box 5 of Form W-2 and/or Box 7 of Form 1099-MISC) of more than \$100,000 from the organization and any related organizations.
- List all of the organization's **former** officers, key employees, and highest compensated employees who received more than \$100,000 of reportable compensation from the organization and any related organizations.
- List all of the organization's **former directors or trustees** that received, in the capacity as a former director or trustee of the organization, more than \$10,000 of reportable compensation from the organization and any related organizations.

List persons in the following order: individual trustees or directors; institutional trustees; officers; key employees; highest compensated employees; and former such persons.

☐ Check this box if neither the organization nor any related organization compensated any current officer, director, or trustee

(A) Name and Title	(B) Average hours per week (list any hours for related organizations below dotted line)	(C) Position (do not check more than one box, unless person is both an officer and a director/trustee)						(D) Reportable compensation from the organization (W-2/1099-MISC)	(E) Reportable compensation from related organizations (W-2/1099-MISC)	(F) Estimated amount of other compensation from the organization and related organizations
		Individual trustee or director	Institutional trustee	Officer	Key employee	Highest compensated employee	Former			
(1) ANDREW GUY CHAIRMAN	.20	X						0	0	0
(2) FLORA PAUKAN SECRETARY	.20	X						675.	0	0
(3) MICHAEL AKERELREA BOARD MEMBER	.20	X						0	0	0
(4) HELEN BUSH TREASURER	.20	X						0	0	0
(5) JOHN PHILLIP, SR BOARD MEMBER	.20	X						225.	0	0
(6) MOSES WHITE, SR BOARD MEMBER	.20	X						1,125.	0	0
(7) NICK ANDREW, SR VICE CHAIRMAN	.20	X						1,350.	0	0
(8) JOHNNY EVAN BOARD MEMBER	.20	X						0	0	0
(9) REA BAVILLA PRESIDENT/CEO	40.00			X				52,500.	0	0
(10)										
(11)										
(12)										
(13)										
(14)										

(A)

Name and title

**(B)**  
Average  
hours per  
week (list any  
hours for  
related  
organizations  
below dotted  
line)

(C)  
Position  
(do not check more than one  
box, unless person is both an  
officer and a director/trustee)

Former
Highest compensated employee
Key employee
Officer
Institutional trustee
Individual trustee or director

(D)  
Reportable  
compensation  
from  
the  
organization  
(W-2/1099-MISC)

(E)  
Reportable  
compensation from  
related  
organizations  
(W-2/1099-MISC)

(F)  
Estimated  
amount of  
other  
compensation  
from the  
organization  
and related  
organizations

<b>1b Sub-total</b>	55,875.	0	0
<b>c Total from continuation sheets to Part VII, Section A</b>	0	0	0
<b>d Total (add lines 1b and 1c)</b>	55,875.	0	0

2	Total number of individuals (including but not limited to those listed above) who received more than \$100,000 of reportable compensation from the organization	0
---	---	---

**3** Did the organization list any **former** officer, director, or trustee, key employee, or highest compensated employee on line 1a? If "Yes," complete Schedule J for such individual . . . . .

**4** For any individual listed on line 1a, is the sum of reportable compensation and other compensation from the organization and related organizations greater than \$150,000? If "Yes," complete Schedule J for such individual. . . . .

5 Did any person listed on line 1a receive or accrue compensation from any unrelated organization or individual for services rendered to the organization? If "Yes," complete Schedule J for such person . . . . .

	Yes	No
3		X
4		X
5		X

## Section B. Independent Contractors

1 Complete this table for your five highest compensated independent contractors that received more than \$100,000 of compensation from the organization. Report compensation for the calendar year ending with or within the organization's tax year.

(A)

**Name and business address**

(B)

Description of services

(C)

### Compensation

NONE

2 Total number of independent contractors (including but not limited to those listed above) who received more than \$100,000 in compensation from the organization ▶ 0

**Part VIII Statement of Revenue**Check if Schedule O contains a response or note to any line in this Part VIII ☐

				(A) Total revenue	(B) Related or exempt function revenue	(C) Unrelated business revenue	(D) Revenue excluded from tax under sections 512-514
<b>Contributions, Gifts, Grants and Other Similar Amounts</b>	1a	Federated campaigns	1a				
	b	Membership dues	1b				
	c	Fundraising events	1c	213,902			
	d	Related organizations	1d				
	e	Government grants (contributions)	1e				
	f	All other contributions, gifts, grants, and similar amounts not included above	1f	360,228			
	g	Noncash contributions included in lines 1a-1f \$					
	h	<b>Total.</b> Add lines 1a-1f		574,130			
<b>Program Service Revenue</b>				<b>Business Code</b>			
	2a						
	b						
	c						
	d						
	e						
	f	All other program service revenue					
	g	<b>Total.</b> Add lines 2a-2f		0			
<b>Other Revenue</b>	3	Investment income (including dividends, interest, and other similar amounts). ATTACHMENT 2		8,120			8,120
	4	Income from investment of tax-exempt bond proceeds		0			
	5	Royalties		0			
		(i) Real	(ii) Personal				
	6a	Gross rents					
	b	Less rental expenses					
	c	Rental income or (loss)					
	d	Net rental income or (loss)		0			
		(i) Securities	(ii) Other				
	7a	Gross amount from sales of assets other than inventory					
	b	Less cost or other basis and sales expenses					
	c	Gain or (loss)					
	d	Net gain or (loss)		0			
	8a	Gross income from fundraising events (not including \$ 213,902 of contributions reported on line 1c) See Part IV, line 18		13,752			
	b	Less direct expenses		33,321			
	c	Net income or (loss) from fundraising events. ATCH 4		-19,569			
	9a	Gross income from gaming activities See Part IV, line 19					
	b	Less direct expenses					
	c	Net income or (loss) from gaming activities		0			
	10a	Gross sales of inventory, less returns and allowances					
b	Less cost of goods sold						
c	Net income or (loss) from sales of inventory		0				
<b>Miscellaneous Revenue</b>				<b>Business Code</b>			
11a	MISC INCOME		900099	2,065	2,065		
b							
c							
d	All other revenue						
e	<b>Total.</b> Add lines 11a-11d			2,065			
12	<b>Total revenue.</b> See instructions			564,746	2,065		
							8,120

**Part IX Statement of Functional Expenses**

Section 501(c)(3) and 501(c)(4) organizations must complete all columns. All other organizations must complete column (A).

Check if Schedule O contains a response or note to any line in this Part IX ☐

	(A) Total expenses	(B) Program service expenses	(C) Management and general expenses	(D) Fundraising expenses
<b>Do not include amounts reported on lines 6b, 7b, 8b, 9b, and 10b of Part VIII.</b>				
1 Grants and other assistance to governments and organizations in the United States. See Part IV, line 21.	0			
2 Grants and other assistance to individuals in the United States. See Part IV, line 22.	384,136.	384,136.		
3 Grants and other assistance to governments, organizations, and individuals outside the United States. See Part IV, lines 15 and 16.	0			
4 Benefits paid to or for members.	0			
5 Compensation of current officers, directors, trustees, and key employees.	55,875.		55,875.	
6 Compensation not included above, to disqualified persons (as defined under section 4958(f)(1)) and persons described in section 4958(c)(3)(B).	0			
7 Other salaries and wages.	70,066.	70,066.		
8 Pension plan accruals and contributions (include section 401(k) and 403(b) employer contributions).	584.		584.	
9 Other employee benefits.	25,976.	25,976.		
10 Payroll taxes.	15,510.		15,510.	
11 Fees for services (non-employees):				
a Management.	0			
b Legal.	0			
c Accounting.	17,837.		17,837.	
d Lobbying.	0			
e Professional fundraising services. See Part IV, line 17.	0			
f Investment management fees.	0			
g Other. (If line 11g amount exceeds 10% of line 25, column (A) amount, list line 11g expenses on Schedule O).	0			
12 Advertising and promotion.	0			
13 Office expenses.	5,717.		5,717.	
14 Information technology.	0			
15 Royalties.	0			
16 Occupancy.	4,963.		4,963.	
17 Travel.	13,208.	13,208.		
18 Payments of travel or entertainment expenses for any federal, state, or local public officials.	0			
19 Conferences, conventions, and meetings.	0			
20 Interest.	0			
21 Payments to affiliates.	0			
22 Depreciation, depletion, and amortization.	0			
23 Insurance.	7,121.		7,121.	
24 Other expenses. Itemize expenses not covered above. (List miscellaneous expenses in line 24e. If line 24e amount exceeds 10% of line 25, column (A) amount, list line 24e expenses on Schedule O.)				
a BANK FEES	3,319.		3,319.	
b CONSULTING/PROFESSIONAL FEES	31,952.		31,952.	
c				
d				
e All other expenses				
<b>25 Total functional expenses.</b> Add lines 1 through 24e.	636,264.	493,386.	142,878.	
<b>26 Joint costs.</b> Complete this line only if the organization reported in column (B) joint costs from a combined educational campaign and fundraising solicitation. Check here <input type="checkbox"/> if following SOP 98-2 (ASC 958-720).	0			

**Part X Balance Sheet**

Check if Schedule O contains a response or note to any line in this Part X

		(A) Beginning of year		(B) End of year
<b>Assets</b>	1 Cash - non-interest-bearing	703,653.	1	628,522.
	2 Savings and temporary cash investments	665,858.	2	675,348.
	3 Pledges and grants receivable, net	0	3	0
	4 Accounts receivable, net	0	4	0
	5 Loans and other receivables from current and former officers, directors, trustees, key employees, and highest compensated employees. Complete Part II of Schedule L	0	5	0
	6 Loans and other receivables from other disqualified persons (as defined under section 4958(f)(1)), persons described in section 4958(c)(3)(B), and contributing employers and sponsoring organizations of section 501(c)(9) voluntary employees' beneficiary organizations (see instructions). Complete Part II of Schedule L	0	6	0
	7 Notes and loans receivable, net	0	7	0
	8 Inventories for sale or use	0	8	0
	9 Prepaid expenses and deferred charges	0	9	0
	10a Land, buildings, and equipment cost or other basis. Complete Part VI of Schedule D	10a		
	b Less accumulated depreciation	10b	10c	0
	11 Investments - publicly traded securities	0	11	0
	12 Investments - other securities. See Part IV, line 11	833,761.	12	852,336.
	13 Investments - program-related. See Part IV, line 11	0	13	0
	14 Intangible assets	0	14	0
	15 Other assets. See Part IV, line 11	0	15	0
16 <b>Total assets.</b> Add lines 1 through 15 (must equal line 34)	2,203,272.	16	2,156,206.	
<b>Liabilities</b>	17 Accounts payable and accrued expenses	0	17	0
	18 Grants payable	0	18	0
	19 Deferred revenue	0	19	0
	20 Tax-exempt bond liabilities	0	20	0
	21 Escrow or custodial account liability. Complete Part IV of Schedule D	0	21	0
	22 Loans and other payables to current and former officers, directors, trustees, key employees, highest compensated employees, and disqualified persons. Complete Part II of Schedule L	0	22	0
	23 Secured mortgages and notes payable to unrelated third parties	0	23	0
	24 Unsecured notes and loans payable to unrelated third parties	0	24	0
	25 Other liabilities (including federal income tax, payables to related third parties, and other liabilities not included on lines 17-24). Complete Part X of Schedule D	0	25	0
	26 <b>Total liabilities.</b> Add lines 17 through 25	0	26	0
<b>Net Assets or Fund Balances</b>	<b>Organizations that follow SFAS 117 (ASC 958), check here</b> <input type="checkbox"/> <b>and complete lines 27 through 29, and lines 33 and 34.</b>			
	27 Unrestricted net assets		27	
	28 Temporarily restricted net assets		28	
	29 Permanently restricted net assets		29	
	<b>Organizations that do not follow SFAS 117 (ASC 958), check here</b> <input checked="" type="checkbox"/> <b>and complete lines 30 through 34.</b>			
	30 Capital stock or trust principal, or current funds	0	30	0
	31 Paid-in or capital surplus, or land, building, or equipment fund	0	31	0
	32 Retained earnings, endowment, accumulated income, or other funds	2,203,272.	32	2,156,206.
33 <b>Total net assets or fund balances</b>	2,203,272.	33	2,156,206.	
34 <b>Total liabilities and net assets/fund balances.</b>	2,203,272.	34	2,156,206.	

Form 990 (2013)

**Part XI Reconciliation of Net Assets**Check if Schedule O contains a response or note to any line in this Part XI ☐

<b>1</b>	Total revenue (must equal Part VIII, column (A), line 12) . . . . .	<b>1</b>	564,746.
<b>2</b>	Total expenses (must equal Part IX, column (A), line 25) . . . . .	<b>2</b>	636,264.
<b>3</b>	Revenue less expenses Subtract line 2 from line 1 . . . . .	<b>3</b>	-71,518.
<b>4</b>	Net assets or fund balances at beginning of year (must equal Part X, line 33, column (A)) . . . . .	<b>4</b>	2,203,272.
<b>5</b>	Net unrealized gains (losses) on investments . . . . .	<b>5</b>	20,143.
<b>6</b>	Donated services and use of facilities . . . . .	<b>6</b>	0
<b>7</b>	Investment expenses . . . . .	<b>7</b>	0
<b>8</b>	Prior period adjustments . . . . .	<b>8</b>	4,309.
<b>9</b>	Other changes in net assets or fund balances (explain in Schedule O) . . . . .	<b>9</b>	0
<b>10</b>	Net assets or fund balances at end of year Combine lines 3 through 9 (must equal Part X, line 33, column (B)) . . . . .	<b>10</b>	2,156,206.

**Part XII Financial Statements and Reporting**Check if Schedule O contains a response or note to any line in this Part XII ☐

	Yes	No
<b>1</b> Accounting method used to prepare the Form 990 <input checked="" type="checkbox"/> Cash <input type="checkbox"/> Accrual <input type="checkbox"/> Other _____ If the organization changed its method of accounting from a prior year or checked "Other," explain in Schedule O		
<b>2a</b> Were the organization's financial statements compiled or reviewed by an independent accountant? . . . . . If "Yes," check a box below to indicate whether the financial statements for the year were compiled or reviewed on a separate basis, consolidated basis, or both <input type="checkbox"/> Separate basis <input type="checkbox"/> Consolidated basis <input type="checkbox"/> Both consolidated and separate basis		X
<b>2b</b> Were the organization's financial statements audited by an independent accountant? . . . . . If "Yes," check a box below to indicate whether the financial statements for the year were audited on a separate basis, consolidated basis, or both <input type="checkbox"/> Separate basis <input type="checkbox"/> Consolidated basis <input type="checkbox"/> Both consolidated and separate basis		X
<b>2c</b> If "Yes" to line 2a or 2b, does the organization have a committee that assumes responsibility for oversight of the audit, review, or compilation of its financial statements and selection of an independent accountant? If the organization changed either its oversight process or selection process during the tax year, explain in Schedule O		
<b>3a</b> As a result of a federal award, was the organization required to undergo an audit or audits as set forth in the Single Audit Act and OMB Circular A-133? . . . . .		X
<b>3b</b> If "Yes," did the organization undergo the required audit or audits? If the organization did not undergo the required audit or audits, explain why in Schedule O and describe any steps taken to undergo such audits		

Form **990** (2013)

**SCHEDULE A**  
**(Form 990 or 990-EZ)**

Department of the Treasury  
Internal Revenue Service

**Public Charity Status and Public Support**

Complete if the organization is a section 501(c)(3) organization or a section 4947(a)(1) nonexempt charitable trust.

OMB No 1545-0047

**2013**

Open to Public  
Inspection

▶ Attach to Form 990 or Form 990-EZ.  
▶ Information about Schedule A (Form 990 or 990-EZ) and its instructions is at [www.irs.gov/form990](http://www.irs.gov/form990).

Name of the organization

CALISTA HERITAGE FOUNDATION, INC.

Employer identification number

92-0088631

**Part I Reason for Public Charity Status** (All organizations must complete this part.) See instructions

The organization is not a private foundation because it is (For lines 1 through 11, check only one box.)

- 1 ☐ A church, convention of churches, or association of churches described in **section 170(b)(1)(A)(i)**.
- 2 ☐ A school described in **section 170(b)(1)(A)(ii)**. (Attach Schedule E.)
- 3 ☐ A hospital or a cooperative hospital service organization described in **section 170(b)(1)(A)(iii)**.
- 4 ☐ A medical research organization operated in conjunction with a hospital described in **section 170(b)(1)(A)(iii)**. Enter the hospital's name, city, and state \_\_\_\_\_
- 5 ☐ An organization operated for the benefit of a college or university owned or operated by a governmental unit described in **section 170(b)(1)(A)(iv)**. (Complete Part II.)
- 6 ☐ A federal, state, or local government or governmental unit described in **section 170(b)(1)(A)(v)**.
- 7 ☒ An organization that normally receives a substantial part of its support from a governmental unit or from the general public described in **section 170(b)(1)(A)(vi)**. (Complete Part II.)
- 8 ☐ A community trust described in **section 170(b)(1)(A)(vi)**. (Complete Part II.)
- 9 ☐ An organization that normally receives (1) more than 33 1/3 % of its support from contributions, membership fees, and gross receipts from activities related to its exempt functions - subject to certain exceptions, and (2) no more than 33 1/3 % of its support from gross investment income and unrelated business taxable income (less section 511 tax) from businesses acquired by the organization after June 30, 1975. See **section 509(a)(2)**. (Complete Part III.)
- 10 ☐ An organization organized and operated exclusively to test for public safety. See **section 509(a)(4)**.
- 11 ☐ An organization organized and operated exclusively for the benefit of, to perform the functions of, or to carry out the purposes of one or more publicly supported organizations described in **section 509(a)(1)** or **section 509(a)(2)**. See **section 509(a)(3)**. Check the box that describes the type of supporting organization and complete lines 11e through 11h.
- a ☐ Type I    b ☐ Type II    c ☐ Type III-Functionally integrated    d ☐ Type III-Non-functionally integrated
- e ☐ By checking this box, I certify that the organization is not controlled directly or indirectly by one or more disqualified persons other than foundation managers and other than one or more publicly supported organizations described in **section 509(a)(1)** or **section 509(a)(2)**.
- f ☐ If the organization received a written determination from the IRS that it is a Type I, Type II, or Type III supporting organization, check this box.
- g Since August 17, 2006, has the organization accepted any gift or contribution from any of the following persons?
- (i) A person who directly or indirectly controls, either alone or together with persons described in (ii) and (iii) below, the governing body of the supported organization? ☐
- (ii) A family member of a person described in (i) above? ☐
- (iii) A 35% controlled entity of a person described in (i) or (ii) above? ☐
- h Provide the following information about the supported organization(s)

	Yes	No
11g(i)		
11g(ii)		
11g(iii)		

(i) Name of supported organization	(ii) EIN	(iii) Type of organization (described on lines 1-9 above or IRC section (see instructions))	(iv) Is the organization in col (i) listed in your governing document?		(v) Did you notify the organization in col (i) of your support?		(vi) Is the organization in col (i) organized in the U.S.?		(vii) Amount of monetary support
			Yes	No	Yes	No	Yes	No	
(A)									
(B)									
(C)									
(D)									
(E)									
Total									

For Paperwork Reduction Act Notice, see the Instructions for Form 990 or 990-EZ.

Schedule A (Form 990 or 990-EZ) 2013

**Part II Support Schedule for Organizations Described in Sections 170(b)(1)(A)(iv) and 170(b)(1)(A)(vi)**  
 (Complete only if you checked the box on line 5, 7, or 8 of Part I or if the organization failed to qualify under Part III. If the organization fails to qualify under the tests listed below, please complete Part III.)

**Section A. Public Support**

Calendar year (or fiscal year beginning in) ►	(a) 2009	(b) 2010	(c) 2011	(d) 2012	(e) 2013	(f) Total
<b>1</b> Gifts, grants, contributions, and membership fees received (Do not include any "unusual grants") . . . . .	1,127,350	1,197,895	559,329	687,525	574,130	4,146,229
<b>2</b> Tax revenues levied for the organization's benefit and either paid to or expended on its behalf . . . . .						0
<b>3</b> The value of services or facilities furnished by a governmental unit to the organization without charge . . . . .						0
<b>4</b> Total. Add lines 1 through 3 . . . . .	1,127,350	1,197,895	559,329	687,525	574,130	4,146,229
<b>5</b> The portion of total contributions by each person (other than a governmental unit or publicly supported organization) included on line 1 that exceeds 2% of the amount shown on line 11, column (f). . . . .						3,057,298
<b>6</b> Public support. Subtract line 5 from line 4 . . . . .						1,088,931

**Section B. Total Support**

Calendar year (or fiscal year beginning in) ►	(a) 2009	(b) 2010	(c) 2011	(d) 2012	(e) 2013	(f) Total
<b>7</b> Amounts from line 4 . . . . .	1,127,350	1,197,895	559,329	687,525	574,130	4,146,229
<b>8</b> Gross income from interest, dividends, payments received on securities loans, rents, royalties and income from similar sources . . . . .	875	2,336	2,242	6,730	8,120	20,303
<b>9</b> Net income from unrelated business activities, whether or not the business is regularly carried on . . . . .						0
<b>10</b> Other income. Do not include gain or loss from the sale of capital assets (Explain in Part IV) - ATCH. 1 . . . . .			520	4,923	2,065	7,508
<b>11</b> Total support. Add lines 7 through 10 . . . . .						4,174,040
<b>12</b> Gross receipts from related activities, etc. (see instructions) . . . . .					12	113,837
<b>13</b> First five years. If the Form 990 is for the organization's first, second, third, fourth, or fifth tax year as a section 501(c)(3) organization, check this box and stop here . . . . .						<input type="checkbox"/>

**Section C. Computation of Public Support Percentage**

<b>14</b> Public support percentage for 2013 (line 6, column (f) divided by line 11, column (f)) . . . . .	<b>14</b>	26.09 %
<b>15</b> Public support percentage from 2012 Schedule A, Part II, line 14 . . . . .	<b>15</b>	23.56 %
<b>16a</b> 33 1/3% support test - 2013. If the organization did not check the box on line 13, and line 14 is 33 1/3% or more, check this box and stop here. The organization qualifies as a publicly supported organization . . . . .		<input type="checkbox"/>
<b>b</b> 33 1/3% support test - 2012. If the organization did not check a box on line 13 or 16a, and line 15 is 33 1/3% or more, check this box and stop here. The organization qualifies as a publicly supported organization . . . . .		<input type="checkbox"/>
<b>17a</b> 10%-facts-and-circumstances test - 2013. If the organization did not check a box on line 13, 16a, or 16b, and line 14 is 10% or more, and if the organization meets the "facts-and-circumstances" test, check this box and stop here. Explain in Part IV how the organization meets the "facts-and-circumstances" test. The organization qualifies as a publicly supported organization . . . . .		<input checked="" type="checkbox"/>
<b>b</b> 10%-facts-and-circumstances test - 2012. If the organization did not check a box on line 13, 16a, 16b, or 17a, and line 15 is 10% or more, and if the organization meets the "facts-and-circumstances" test, check this box and stop here. Explain in Part IV how the organization meets the "facts-and-circumstances" test. The organization qualifies as a publicly supported organization . . . . .		<input type="checkbox"/>
<b>18</b> Private foundation. If the organization did not check a box on line 13, 16a, 16b, 17a, or 17b, check this box and see instructions . . . . .		<input type="checkbox"/>

**Part III Support Schedule for Organizations Described in Section 509(a)(2)**

(Complete only if you checked the box on line 9 of Part I or if the organization failed to qualify under Part II  
If the organization fails to qualify under the tests listed below, please complete Part II)

**Section A. Public Support**

Calendar year (or fiscal year beginning in) ►	(a) 2009	(b) 2010	(c) 2011	(d) 2012	(e) 2013	(f) Total
<b>1</b> Gifts, grants, contributions, and membership fees received (Do not include any "unusual grants.")						
<b>2</b> Gross receipts from admissions, merchandise sold or services performed, or facilities furnished in any activity that is related to the organization's tax-exempt purpose . . . . .						
<b>3</b> Gross receipts from activities that are not an unrelated trade or business under section 513 . . . . .						
<b>4</b> Tax revenues levied for the organization's benefit and either paid to or expended on its behalf . . . . .						
<b>5</b> The value of services or facilities furnished by a governmental unit to the organization without charge . . . . .						
<b>6</b> Total. Add lines 1 through 5 . . . . .						
<b>7a</b> Amounts included on lines 1, 2, and 3 received from disqualified persons . . . . .						
<b>b</b> Amounts included on lines 2 and 3 received from other than disqualified persons that exceed the greater of \$5,000 or 1% of the amount on line 13 for the year . . . . .						
<b>c</b> Add lines 7a and 7b. . . . .						
<b>8</b> Public support (Subtract line 7c from line 6) . . . . .						

**Section B. Total Support**

Calendar year (or fiscal year beginning in) ►	(a) 2009	(b) 2010	(c) 2011	(d) 2012	(e) 2013	(f) Total
<b>9</b> Amounts from line 6. . . . .						
<b>10a</b> Gross income from interest, dividends, payments received on securities loans, rents, royalties and income from similar sources . . . . .						
<b>b</b> Unrelated business taxable income (less section 511 taxes) from businesses acquired after June 30, 1975 . . . . .						
<b>c</b> Add lines 10a and 10b . . . . .						
<b>11</b> Net income from unrelated business activities not included in line 10b, whether or not the business is regularly carried on . . . . .						
<b>12</b> Other income. Do not include gain or loss from the sale of capital assets (Explain in Part IV) . . . . .						
<b>13</b> Total support. (Add lines 9, 10c, 11, and 12) . . . . .						
<b>14</b> First five years. If the Form 990 is for the organization's first, second, third, fourth, or fifth tax year as a section 501(c)(3) organization, check this box and stop here. . . . . <input type="checkbox"/>						

**Section C. Computation of Public Support Percentage**

<b>15</b> Public support percentage for 2013 (line 8, column (f) divided by line 13, column (f)) . . . . .	<b>15</b>	%
<b>16</b> Public support percentage from 2012 Schedule A, Part III, line 15 . . . . .	<b>16</b>	%

**Section D. Computation of Investment Income Percentage**

<b>17</b> Investment income percentage for 2013 (line 10c, column (f) divided by line 13, column (f)) . . . . .	<b>17</b>	%
<b>18</b> Investment income percentage from 2012 Schedule A, Part III, line 17 . . . . .	<b>18</b>	%

- 19a 33 1/3% support tests - 2013.** If the organization did not check the box on line 14, and line 15 is more than 33 1/3%, and line 17 is not more than 33 1/3%, check this box and stop here. The organization qualifies as a publicly supported organization ☐
- b 33 1/3% support tests - 2012.** If the organization did not check a box on line 14 or line 19a, and line 16 is more than 33 1/3%, and line 18 is not more than 33 1/3%, check this box and stop here. The organization qualifies as a publicly supported organization ☐
- 20 Private foundation.** If the organization did not check a box on line 14, 19a, or 19b, check this box and see instructions ☐

**Part IV** **Supplemental Information.** Provide the explanations required by Part II, line 10, Part II, line 17a or 17b, and Part III, line 12. Also complete this part for any additional information. (See instructions)

## SCHEDULE A - FACTS &amp; CIRCUMSTANCES TEST

## PART II, SECTION C, LINE 17A

CALISTA HERITAGE FOUNDATION'S PUBLIC SUPPORT IS GREATER THAN 10% OF ITS TOTAL SUPPORT AS IT RECEIVES APPROXIMATELY 26% OF ITS CONTRIBUTIONS FROM THE GENERAL PUBLIC. THE GOVERNING BOARD REPRESENTS THE INTERESTS OF ALASKA NATIVES, ESPECIALLY IN THE CALISTA REGION BY PROVIDING SCHOLARSHIPS TO THESE INDIVIDUALS. CALISTA HERITAGE FOUNDATION IS SOLICITING CONTRIBUTIONS FROM A WIDE RANGE OF UNRELATED ORGANIZATIONS TO INCREASE ITS PUBLIC SUPPORT PERCENTAGE. AS OF 12/31/2013, CALISTA HERITAGE FOUNDATION (CHF) IS WORKING WITH ANOTHER ORGANIZATION TO ALIGN THE ORGANIZATION'S MISSION, VISION AND VALUES, STREAMLINE EFFORTS, AND ALLOW FOR THE EXPANSION OF DONATIONS AND GRANT FUNDING TO PROVIDE FOR THE SCHOLARSHIP PROGRAM AND CULTURAL ACTIVITIES.

ATTACHMENT 1

## SCHEDULE A, PART II - OTHER INCOME

DESCRIPTION	2009	2010	2011	2012	2013	TOTAL
MISCELLANEOUS INCOME			520.	4,923	2,065	7,508
TOTALS			<u>520</u>	<u>4,923</u>	<u>2,065</u>	<u>7,508</u>

**SCHEDULE D  
(Form 990)**

Department of the Treasury  
Internal Revenue Service

**Supplemental Financial Statements**

▶ **Complete if the organization answered "Yes," to Form 990,  
Part IV, line 6, 7, 8, 9, 10, 11a, 11b, 11c, 11d, 11e, 11f, 12a, or 12b.**

▶ **Attach to Form 990.**

▶ **Information about Schedule D (Form 990) and its instructions is at [www.irs.gov/form990](http://www.irs.gov/form990).**

OMB No 1545-0047

**2013**

**Open to Public  
Inspection**

Name of the organization

CALISTA HERITAGE FOUNDATION, INC.

Employer identification number

92-0088631

**Part I Organizations Maintaining Donor Advised Funds or Other Similar Funds or Accounts.**

Complete if the organization answered "Yes" to Form 990, Part IV, line 6.

	(a) Donor advised funds	(b) Funds and other accounts
1 Total number at end of year . . . . .		
2 Aggregate contributions to (during year) . . . . .		
3 Aggregate grants from (during year) . . . . .		
4 Aggregate value at end of year . . . . .		

5 Did the organization inform all donors and donor advisors in writing that the assets held in donor advised funds are the organization's property, subject to the organization's exclusive legal control? . . . . . ☐ Yes ☐ No

6 Did the organization inform all grantees, donors, and donor advisors in writing that grant funds can be used only for charitable purposes and not for the benefit of the donor or donor advisor, or for any other purpose conferring impermissible private benefit? . . . . . ☐ Yes ☐ No

**Part II Conservation Easements.** Complete if the organization answered "Yes" to Form 990, Part IV, line 7.

1 Purpose(s) of conservation easements held by the organization (check all that apply)

<input type="checkbox"/> Preservation of land for public use (e g , recreation or education)	<input type="checkbox"/> Preservation of an historically important land area
<input type="checkbox"/> Protection of natural habitat	<input type="checkbox"/> Preservation of a certified historic structure
<input type="checkbox"/> Preservation of open space	

2 Complete lines 2a through 2d if the organization held a qualified conservation contribution in the form of a conservation easement on the last day of the tax year

	Held at the End of the Tax Year
a Total number of conservation easements . . . . .	2a
b Total acreage restricted by conservation easements . . . . .	2b
c Number of conservation easements on a certified historic structure included in (a) . . . . .	2c
d Number of conservation easements included in (c) acquired after 8/17/06, and not on a historic structure listed in the National Register . . . . .	2d

3 Number of conservation easements modified, transferred, released, extinguished, or terminated by the organization during the tax year ▶ \_\_\_\_\_

4 Number of states where property subject to conservation easement is located ▶ \_\_\_\_\_

5 Does the organization have a written policy regarding the periodic monitoring, inspection, handling of violations, and enforcement of the conservation easements it holds? . . . . . ☐ Yes ☐ No

6 Staff and volunteer hours devoted to monitoring, inspecting, and enforcing conservation easements during the year ▶ \_\_\_\_\_

7 Amount of expenses incurred in monitoring, inspecting, and enforcing conservation easements during the year ▶ \$ \_\_\_\_\_

8 Does each conservation easement reported on line 2(d) above satisfy the requirements of section 170(h)(4)(B) (i) and section 170(h)(4)(B)(ii)? . . . . . ☐ Yes ☐ No

9 In Part XIII, describe how the organization reports conservation easements in its revenue and expense statement, and balance sheet, and include, if applicable, the text of the footnote to the organization's financial statements that describes the organization's accounting for conservation easements

**Part III Organizations Maintaining Collections of Art, Historical Treasures, or Other Similar Assets.**

Complete if the organization answered "Yes" to Form 990, Part IV, line 8

1a If the organization elected, as permitted under SFAS 116 (ASC 958), not to report in its revenue statement and balance sheet works of art, historical treasures, or other similar assets held for public exhibition, education, or research in furtherance of public service, provide, in Part XIII, the text of the footnote to its financial statements that describes these items

b If the organization elected, as permitted under SFAS 116 (ASC 958), to report in its revenue statement and balance sheet works of art, historical treasures, or other similar assets held for public exhibition, education, or research in furtherance of public service, provide the following amounts relating to these items

(i) Revenues included in Form 990, Part VIII, line 1 . . . . . ▶ \$ \_\_\_\_\_

(ii) Assets included in Form 990, Part X . . . . . ▶ \$ \_\_\_\_\_

2 If the organization received or held works of art, historical treasures, or other similar assets for financial gain, provide the following amounts required to be reported under SFAS 116 (ASC 958) relating to these items

a Revenues included in Form 990, Part VIII, line 1 . . . . . ▶ \$ \_\_\_\_\_

b Assets included in Form 990, Part X . . . . . ▶ \$ \_\_\_\_\_

For Paperwork Reduction Act Notice, see the Instructions for Form 990.

Schedule D (Form 990) 2013

**Part III Organizations Maintaining Collections of Art, Historical Treasures, or Other Similar Assets** (continued)

3 Using the organization's acquisition, accession, and other records, check any of the following that are a significant use of its collection items (check all that apply)

- a ☐ Public exhibition      d ☐ Loan or exchange programs  
 b ☐ Scholarly research      e ☐ Other \_\_\_\_\_  
 c ☐ Preservation for future generations

4 Provide a description of the organization's collections and explain how they further the organization's exempt purpose in Part XIII

5 During the year, did the organization solicit or receive donations of art, historical treasures, or other similar assets to be sold to raise funds rather than to be maintained as part of the organization's collection? . . . . . ☐ Yes ☐ No

**Part IV Escrow and Custodial Arrangements.** Complete if the organization answered "Yes" to Form 990, Part IV, line 9, or reported an amount on Form 990, Part X, line 21

1a Is the organization an agent, trustee, custodian or other intermediary for contributions or other assets not included on Form 990, Part X? . . . . . ☐ Yes ☐ No

b If "Yes," explain the arrangement in Part XIII and complete the following table

	Amount
c Beginning balance . . . . .	1c
d Additions during the year . . . . .	1d
e Distributions during the year . . . . .	1e
f Ending balance . . . . .	1f

2a Did the organization include an amount on Form 990, Part X, line 21? . . . . . ☐ Yes ☐ No

b If "Yes," explain the arrangement in Part XIII. Check here if the explanation has been provided in Part XIII. . . . . ☐

**Part V Endowment Funds.** Complete if the organization answered "Yes" to Form 990, Part IV, line 10.

	(a) Current year	(b) Prior year	(c) Two years back	(d) Three years back	(e) Four years back
1a Beginning of year balance . . . . .					
b Contributions . . . . .					
c Net investment earnings, gains, and losses . . . . .					
d Grants or scholarships . . . . .					
e Other expenditures for facilities and programs . . . . .					
f Administrative expenses . . . . .					
g End of year balance . . . . .					

2 Provide the estimated percentage of the current year end balance (line 1g, column (a)) held as

- a Board designated or quasi-endowment ▶ \_\_\_\_\_ %  
 b Permanent endowment ▶ \_\_\_\_\_ %  
 c Temporarily restricted endowment ▶ \_\_\_\_\_ %

The percentages in lines 2a, 2b, and 2c should equal 100%

3a Are there endowment funds not in the possession of the organization that are held and administered for the organization by

- (i) unrelated organizations . . . . . ☐  
 (ii) related organizations . . . . . ☐

b If "Yes" to 3a(ii), are the related organizations listed as required on Schedule R? . . . . . ☐

	Yes	No
3a(i)	<input type="checkbox"/>	<input type="checkbox"/>
3a(ii)	<input type="checkbox"/>	<input type="checkbox"/>
3b	<input type="checkbox"/>	<input type="checkbox"/>

4 Describe in Part XIII the intended uses of the organization's endowment funds

**Part VI Land, Buildings, and Equipment.**

Complete if the organization answered "Yes" to Form 990, Part IV, line 11a. See Form 990, Part X, line 10.

Description of property	(a) Cost or other basis (investment)	(b) Cost or other basis (other)	(c) Accumulated depreciation	(d) Book value
1a Land . . . . .				
b Buildings . . . . .				
c Leasehold improvements . . . . .				
d Equipment . . . . .				
e Other . . . . .				

Total. Add lines 1a through 1e (Column (d) must equal Form 990, Part X, column (B), line 10(c).) . . . . . ▶

**Part VII Investments - Other Securities.**

Complete if the organization answered "Yes" to Form 990, Part IV, line 11b See Form 990, Part X, line 12.

(a) Description of security or category (including name of security)	(b) Book value	(c) Method of valuation Cost or end-of-year market value
(1) Financial derivatives . . . . .		
(2) Closely-held equity interests . . . . .		
(3) Other		
(A) ANNUITIES	852,336.	COST
(B)		
(C)		
(D)		
(E)		
(F)		
(G)		
(H)		
<b>Total.</b> (Column (b) must equal Form 990, Part X, col (B) line 12) ►	852,336.	

**Part VIII Investments - Program Related.**

Complete if the organization answered "Yes" to Form 990, Part IV, line 11c See Form 990, Part X, line 13

(a) Description of investment	(b) Book value	(c) Method of valuation Cost or end-of-year market value
(1)		
(2)		
(3)		
(4)		
(5)		
(6)		
(7)		
(8)		
(9)		
<b>Total.</b> (Column (b) must equal Form 990, Part X, col (B) line 13) ►		

**Part IX Other Assets.**

Complete if the organization answered "Yes" to Form 990, Part IV, line 11d See Form 990, Part X, line 15

(a) Description	(b) Book value
(1)	
(2)	
(3)	
(4)	
(5)	
(6)	
(7)	
(8)	
(9)	
<b>Total.</b> (Column (b) must equal Form 990, Part X, col (B) line 15) . . . . . ►	

**Part X Other Liabilities.**

Complete if the organization answered "Yes" to Form 990, Part IV, line 11e or 11f See Form 990, Part X, line 25

1. (a) Description of liability	(b) Book value
(1) Federal income taxes	
(2)	
(3)	
(4)	
(5)	
(6)	
(7)	
(8)	
(9)	
<b>Total.</b> (Column (b) must equal Form 990, Part X, col (B) line 25) ►	

2. Liability for uncertain tax positions In Part XIII, provide the text of the footnote to the organization's financial statements that reports the organization's liability for uncertain tax positions under FIN 48 (ASC 740) Check here if the text of the footnote has been provided in Part XIII ☐

Complete if the organization answered "Yes" to Form 990, Part IV, line 12a

Complete if the organization answered "Yes" to Form 990, Part IV, line 12a

Provide the descriptions required for Part II, lines 3, 5, and 9, Part III, lines 1a and 4, Part IV, lines 1b and 2b, Part V, line 4, Part X, line 2, Part XI, lines 2d and 4b, and Part XII, lines 2d and 4b. Also complete this part to provide any additional information.

[illegible]

**Part XIII** Supplemental Information *(continued)*

**SCHEDULE G**  
**(Form 990 or 990-EZ)**

Department of the Treasury  
Internal Revenue Service

Name of the organization

**Supplemental Information Regarding Fundraising or Gaming Activities**

Complete if the organization answered "Yes" to Form 990, Part IV, lines 17, 18, or 19, or if the organization entered more than \$15,000 on Form 990-EZ, line 6a

▶ Attach to Form 990 or Form 990-EZ.

▶ Information about Schedule G (Form 990 or 990-EZ) and its instructions is at [www.irs.gov/form990](http://www.irs.gov/form990).

OMB No 1545-0047

**2013**

**Open to Public  
Inspection**

CALISTA HERITAGE FOUNDATION, INC.

Employer identification number

92-0088631

**Part I Fundraising Activities.** Complete if the organization answered "Yes" to Form 990, Part IV, line 17  
Form 990-EZ filers are not required to complete this part.

**1** Indicate whether the organization raised funds through any of the following activities. Check all that apply.

- |  |   |
|--|---|
| <input type="checkbox"/> <b>a</b> Mail solicitations               | <input type="checkbox"/> <b>e</b> Solicitation of non-government grants |
| <input type="checkbox"/> <b>b</b> Internet and email solicitations | <input type="checkbox"/> <b>f</b> Solicitation of government grants     |
| <input type="checkbox"/> <b>c</b> Phone solicitations              | <input type="checkbox"/> <b>g</b> Special fundraising events            |
| <input type="checkbox"/> <b>d</b> In-person solicitations          |   |

- 2a** Did the organization have a written or oral agreement with any individual (including officers, directors, trustees or key employees listed in Form 990, Part VII) or entity in connection with professional fundraising services? ☐ **Yes** ☐ **No**
- b** If "Yes," list the ten highest paid individuals or entities (fundraisers) pursuant to agreements under which the fundraiser is to be compensated at least \$5,000 by the organization

(i) Name and address of individual or entity (fundraiser)	(ii) Activity	(iii) Did fundraiser have custody or control of contributions?		(iv) Gross receipts from activity	(v) Amount paid to (or retained by) fundraiser listed in col (i)	(vi) Amount paid to (or retained by) organization
		Yes	No			
1						
2						
3						
4						
5						
6						
7						
8						
9						
10						
<b>Total</b> .....						

- 3** List all states in which the organization is registered or licensed to solicit contributions or has been notified it is exempt from registration or licensing

**Part II Fundraising Events.** Complete if the organization answered "Yes" to Form 990, Part IV, line 18, or reported more than \$15,000 of fundraising event contributions and gross income on Form 990-EZ, lines 1 and 6b. List events with gross receipts greater than \$5,000.

		(a) Event #1 GOLF TOURNEY (event type)	(b) Event #2 (event type)	(c) Other events (total number)	(d) Total events (add col (a) through col (c))
Revenue	1 Gross receipts . . . . .	227,654.			227,654.
	2 Less Contributions . . . . .	213,902.			213,902.
	3 Gross income (line 1 minus line 2). . . . .	13,752.			13,752.
Direct Expenses	4 Cash prizes . . . . .				
	5 Noncash prizes . . . . .	9,137.			9,137.
	6 Rent/facility costs . . . . .	11,740.			11,740.
	7 Food and beverages . . . . .	6,260.			6,260.
	8 Entertainment . . . . .	900.			900.
	9 Other direct expenses . . . . .	5,284.			5,284.
	10 Direct expense summary Add lines 4 through 9 in column (d) . . . . .				33,321.
	11 Net income summary Subtract line 10 from line 3, column (d) . . . . .				-19,569.

**Part III Gaming.** Complete if the organization answered "Yes" to Form 990, Part IV, line 19, or reported more than \$15,000 on Form 990-EZ, line 6a.

		(a) Bingo	(b) Pull tabs/instant bingo/progressive bingo	(c) Other gaming	(d) Total gaming (add col (a) through col (c))
Revenue	1 Gross revenue . . . . .				
	2 Cash prizes . . . . .				
Direct Expenses	3 Noncash prizes . . . . .				
	4 Rent/facility costs . . . . .				
	5 Other direct expenses . . . . .				
	6 Volunteer labor . . . . .	<input type="checkbox"/> Yes <input type="checkbox"/> No	<input type="checkbox"/> Yes <input type="checkbox"/> No	<input type="checkbox"/> Yes <input type="checkbox"/> No	
	7 Direct expense summary Add lines 2 through 5 in column (d) . . . . .				
	8 Net gaming income summary Subtract line 7 from line 1, column (d) . . . . .				

9 Enter the state(s) in which the organization operates gaming activities \_\_\_\_\_

a Is the organization licensed to operate gaming activities in each of these states? ☐ Yes ☐ No

b If "No," explain \_\_\_\_\_

10 a Were any of the organization's gaming licenses revoked, suspended or terminated during the tax year? ☐ Yes ☐ No

b If "Yes," explain \_\_\_\_\_

- 11** Does the organization operate gaming activities with nonmembers? ☐ Yes ☐ No
- 12** Is the organization a grantor, beneficiary or trustee of a trust or a member of a partnership or other entity formed to administer charitable gaming? ☐ Yes ☐ No
- 13** Indicate the percentage of gaming activity operated in
- |                                      |            |   |
|--------------------------------------|------------|---|
| <b>a</b> The organization's facility | <b>13a</b> | % |
| <b>b</b> An outside facility         | <b>13b</b> | % |
- 14** Enter the name and address of the person who prepares the organization's gaming/special events books and records

Name ▶ \_\_\_\_\_

Address ▶ \_\_\_\_\_

- 15 a** Does the organization have a contract with a third party from whom the organization receives gaming revenue? ☐ Yes ☐ No
- b** If "Yes," enter the amount of gaming revenue received by the organization ▶ \$ \_\_\_\_\_ and the amount of gaming revenue retained by the third party ▶ \$ \_\_\_\_\_
- c** If "Yes," enter name and address of the third party

Name ▶ \_\_\_\_\_

Address ▶ \_\_\_\_\_

**16** Gaming manager information

Name ▶ \_\_\_\_\_

Gaming manager compensation ▶ \$ \_\_\_\_\_

Description of services provided ▶ \_\_\_\_\_

☐ Director/officer ☐ Employee ☐ Independent contractor

**17** Mandatory distributions

- a** Is the organization required under state law to make charitable distributions from the gaming proceeds to retain the state gaming license? ☐ Yes ☐ No
- b** Enter the amount of distributions required under state law to be distributed to other exempt organizations or spent in the organization's own exempt activities during the tax year ▶ \$ \_\_\_\_\_

**Part IV** **Supplemental Information.** Provide the explanation required by Part I, line 2b, columns (iii) and (v), and Part III, lines 9, 9b, 10b, 15b, 15c, 16, and 17b, as applicable. Also complete this part to provide any additional information (see instructions).

SCHEDULE I  
(Form 990)

Grants and Other Assistance to Organizations,  
Governments, and Individuals in the United States

Complete if the organization answered "Yes" to Form 990, Part IV, line 21 or 22.  
▶ Attach to Form 990.

Department of the Treasury  
Internal Revenue Service

Name of the organization

CALISTA HERITAGE FOUNDATION, INC.

Part I General Information on Grants and Assistance

1 Does the organization maintain records to substantiate the amount of the grants or assistance, the grantees' eligibility for the grants or assistance, and the selection criteria used to award the grants or assistance? . . . . . ☒ Yes ☐ No

2 Describe in Part IV the organization's procedures for monitoring the use of grant funds in the United States

Part II Grants and Other Assistance to Governments and Organizations in the United States. Complete if the organization answered "Yes" to Form 990, Part IV, line 21, for any recipient that received more than \$5,000. Part II can be duplicated if additional space is needed.

1 (a) Name and address of organization or government	(b) EIN	(c) IRC section if applicable	(d) Amount of cash grant	(e) Amount of non-cash assistance	(f) Method of valuation (book, FMV, appraisal, other)	(g) Description of non-cash assistance	(h) Purpose of grant or assistance
(1) -----							
(2) -----							
(3) -----							
(4) -----							
(5) -----							
(6) -----							
(7) -----							
(8) -----							
(9) -----							
(10) -----							
(11) -----							
(12) -----							

2 Enter total number of section 501(c)(3) and government organizations listed in the line 1 table . . . . . ▶

3 Enter total number of other organizations listed in the line 1 table . . . . . ▶

For Paperwork Reduction Act Notice, see the Instructions for Form 990.

Schedule I (Form 990) (2013)

**Part III** Grants and Other Assistance to Individuals in the United States. Complete if the organization answered "Yes" on Form 990, Part IV, line 22. Part III can be duplicated if additional space is needed.

1	2	3	4	5	6	7	(a) Type of grant or assistance	(b) Number of recipients	(c) Amount of cash grant	(d) Amount of non-cash assistance	(e) Method of valuation (book, FMV, appraisal, other)	(f) Description of non-cash assistance
1							SCHOLARSHIPS	467	384,136		N/A	N/A
2												
3												
4												
5												
6												
7												

**Part IV** Supplemental Information. Complete this part to provide the information required in Part I, line 2, Part III, column (b), and any other additional information.

GENERAL INFORMATION ON GRANTS AND ASSISTANCE

SCHEDULE I, PART I, LINE 2

THE CHECK REGISTER AND ACCESS DATABASE IS USED TO TRACK THE STUDENT,

SCHOOL AND THE AMOUNT OF AWARD INFORMATION. ALSO, SEE ATTACHMENT 5 FOR

THE SCHOLARSHIP APPLICATION.

**SCHEDULE O**  
**(Form 990 or 990-EZ)**

Department of the Treasury  
Internal Revenue Service

Name of the organization

**Supplemental Information to Form 990 or 990-EZ**

**Complete to provide information for responses to specific questions on  
Form 990 or 990-EZ or to provide any additional information.**  
**▶ Attach to Form 990 or 990-EZ.**

OMB No 1545-0047

**2013**

**Open to Public  
Inspection**

CALISTA HERITAGE FOUNDATION, INC.

Employer identification number

92-0088631

PROCESS FOR REVIEWING THE FORM 990

FORM 990, PART VI, SECTION B, LINE 11

REA BAVILLA (BOARD PRESIDENT) REVIEWS THE FORM 990 PRIOR TO FILING THE  
RETURN.

PROCESS FOR MAKING CERTAIN DOCUMENTS AVAILABLE TO THE PUBLIC

FORM 990, PART VI, SECTION C, LINE 19

THE CALISTA HERITAGE FOUNDATION DOES NOT MAKE ITS GOVERNING DOCUMENTS,  
FINANCIAL STATEMENTS OR POLICIES AVAILABLE TO THE PUBLIC, EXCEPT FOR THE  
SCHOLARSHIP APPLICATION FORM AND THE REQUIRED CRITERIA FOR APPLICATION.  
TO DATE, THE HERITAGE FOUNDATION HAS NOT RECEIVED ANY REQUEST TO EXAMINE  
ITS GOVERNING DOCUMENTS OR FINANCIAL STATEMENTS, HOWEVER, THIS  
INFORMATION COULD BE PROVIDED IF A REQUEST WAS MADE IN WRITING AND THE  
REQUESTER HAD A VIABLE REASON FOR EXAMINING SUCH DOCUMENTS. THE  
SCHOLARSHIP APPLICATION IS POSTED ON THE CALISTA CORPORATION WEBSITE AND  
IS ALSO AVAILABLE IN THE RECEPTION AREA OF CALISTA CORPORATION, WHERE  
SHAREHOLDERS AND DESCENDENTS CAN ALSO EXAMINE JOB POSTINGS AND SUBMIT  
DATA FOR THE CALISTA TALENT BANK.

PROCESS FOR DETERMINING COMPENSATION OF CEO OR KEY EMPLOYEES

FORM 990, PART VI, SECTION B, LINES 15A AND B

ALL WAGES ARE BASED ON A NON-PROFIT COMPENSATION SURVEY. THE SALARIES  
ARE BASED ON THE MEAN AMOUNT DERIVED IN THE SURVEY, AND ARE APPROVED BY  
THE BOARD.

Name of the organization

CALISTA HERITAGE FOUNDATION, INC.

Employer identification number

92-0088631

ATTACHMENT 1FORM 990, PART III, LINE 1 - ORGANIZATION'S MISSION

THE PURPOSE OF THE CALISTA HERITAGE FOUNDATION SCHOLARSHIP FUND IS TO  
 PROVIDE FINANCIAL ASSISTANCE TO CALISTA REGION SHAREHOLDERS OR  
 DESCENDANTS OF CALISTA SHAREHOLDERS ENROLLED IN FORMAL PROGRAMS OF  
 STUDY. TO CELEBRATE AND PROMOTE YUUYARAQ, THE TRADITIONAL/CULTURAL  
 WAY OF BEING IN THE CALISTA REGION WHICH INSPIRES AND ENCOURAGES OUR  
 PEOPLE TO ACHIEVE THEIR DREAMS THROUGH EDUCATION.

ATTACHMENT 2FORM 990, PART VIII - INVESTMENT INCOME

<u>DESCRIPTION</u>	(A) <u>TOTAL REVENUE</u>	(B) <u>RELATED OR EXEMPT REVENUE</u>	(C) <u>UNRELATED BUSINESS REV.</u>	(D) <u>EXCLUDED REVENUE</u>
INTEREST INCOME	8,120.			8,120.
TOTALS	<u>8,120.</u>			<u>8,120.</u>

ATTACHMENT 3FORM 990, PART VIII - EXCLUDED CONTRIBUTIONS

<u>DESCRIPTION</u>	<u>AMOUNT</u>
GOLF TOURNAMENT	213,902.
TOTAL	<u>213,902.</u>

ATTACHMENT 4FORM 990, PART VIII - FUNDRAISING EVENTS

<u>DESCRIPTION</u>	<u>GROSS INCOME</u>	<u>DIRECT EXPENSES</u>	<u>NET INCOME</u>
GOLF TOURNAMENT	13,752.	33,321.	-19,569.

Name of the organization

CALISTA HERITAGE FOUNDATION, INC.

Employer identification number

92-0088631

ATTACHMENT 4 (CONT'D)

FORM 990, PART VIII - FUNDRAISING EVENTS

<u>DESCRIPTION</u>	<u>GROSS INCOME</u>	<u>DIRECT EXPENSES</u>	<u>NET INCOME</u>
TOTALS	<u>13,752.</u>	<u>33,321.</u>	<u>-19,569.</u>

**SCHEDULE R**  
**(Form 990)**Department of the Treasury  
Internal Revenue Service**Related Organizations and Unrelated Partnerships**

▶ Complete if the organization answered "Yes" on Form 990, Part IV, line 33, 34, 35b, 36, or 37.

▶ Attach to Form 990. ▶ See separate instructions.

▶ Information about Schedule R (Form 990) and its instructions is at [www.irs.gov/form990](http://www.irs.gov/form990).

OMB No 1545-0047

**2013**Open to Public  
Inspection

Name of the organization

CALISTA HERITAGE FOUNDATION, INC.

Employer identification number

92-0088631

**Part I Identification of Disregarded Entities** Complete if the organization answered "Yes" on Form 990, Part IV, line 33

(1)	(a) Name, address, and EIN (if applicable) of disregarded entity	(b) Primary activity	(c) Legal domicile (state or foreign country)	(d) Total income	(e) End-of-year assets	(f) Direct controlling entity
(2)						
(3)						
(4)						
(5)						
(6)						

**Part II Identification of Related Tax-Exempt Organizations** Complete if the organization answered "Yes" on Form 990, Part IV, line 34 because it had one or more related tax-exempt organizations during the tax year

(1)	(a) Name, address, and EIN of related organization	(b) Primary activity	(c) Legal domicile (state or foreign country)	(d) Exempt Code section	(e) Public charity status (if section 501(c)(3))	(f) Direct controlling entity	(g) Section 512(b)(13) controlled entity?
							Yes No
(2)							
(3)							
(4)							
(5)							
(6)							
(7)							

For Paperwork Reduction Act Notice, see the Instructions for Form 990.

Schedule R (Form 990) 2013

**Part III Identification of Related Organizations Taxable as a Partnership** Complete if the organization answered "Yes" on Form 990, Part IV, line 34 because it had one or more related organizations treated as a partnership during the tax year.

(a) Name, address, and EIN of related organization	(b) Primary activity	(c) Legal domicile (state or foreign country)	(d) Direct controlling entity	(e) Predominant income (related, unrelated, excluded from tax under sections 512-514)	(f) Share of total income	(g) Share of end-of- year assets	(h) Disproportionate allocations?		(i) Code V-UBI amount in box 20 of Schedule K-1 (Form 1065)	(j) General or managing partner?		(k) Percentage ownership
							Yes	No		Yes	No	
(1) -----												
(2) -----												
(3) -----												
(4) -----												
(5) -----												
(6) -----												
(7) -----												

**Part IV Identification of Related Organizations Taxable as a Corporation or Trust** Complete if the organization answered "Yes" on Form 990, Part IV, line 34 because it had one or more related organizations treated as a corporation or trust during the tax year

(a) Name, address, and EIN of related organization	(b) Primary activity	(c) Legal domicile (state or foreign country)	(d) Direct controlling entity	(e) Type of entity (C corp, S corp, or trust)	(f) Share of total income	(g) Share of end-of-year assets	(h) Perce- tage ownership	(i) Section 512(b)(13) controlled entity?	
								Yes	No
(1) CALISTA CORPORATION 301 CALISTA COURT, SUITE A ANCHORAGE, AK 99518 92-0042507	INVESTMENTS	AK	N/A	C CORP	0	0	0		X
(2) -----									
(3) -----									
(4) -----									
(5) -----									
(6) -----									
(7) -----									

**Part V Transactions With Related Organizations** Complete if the organization answered "Yes" on Form 990, Part IV, line 34, 35b, or 36.

**Note.** Complete line 1 if any entity is listed in Parts II, III, or IV of this schedule

**1** During the tax year, did the organization engage in any of the following transactions with one or more related organizations listed in Parts II-IV?

	Yes	No
<b>a</b> Receipt of (i) interest (ii) annuities (iii) royalties or (iv) rent from a controlled entity		X
<b>b</b> Gift, grant, or capital contribution to related organization(s)		X
<b>c</b> Gift, grant, or capital contribution from related organization(s)	X	
<b>d</b> Loans or loan guarantees to or for related organization(s)		X
<b>e</b> Loans or loan guarantees by related organization(s)		X
<b>f</b> Dividends from related organization(s)		
<b>g</b> Sale of assets to related organization(s)		X
<b>h</b> Purchase of assets from related organization(s)		X
<b>i</b> Exchange of assets with related organization(s)		X
<b>j</b> Lease of facilities, equipment, or other assets to related organization(s)		X
<b>k</b> Lease of facilities, equipment, or other assets from related organization(s)		X
<b>l</b> Performance of services or membership or fundraising solicitations for related organization(s)		X
<b>m</b> Performance of services or membership or fundraising solicitations by related organization(s)		X
<b>n</b> Sharing of facilities, equipment, mailing lists, or other assets with related organization(s)		X
<b>o</b> Sharing of paid employees with related organization(s)		X
<b>p</b> Reimbursement paid to related organization(s) for expenses		X
<b>q</b> Reimbursement paid by related organization(s) for expenses		X
<b>r</b> Other transfer of cash or property to related organization(s)		X
<b>s</b> Other transfer of cash or property from related organization(s)		X

**2** If the answer to any of the above is "Yes," see the instructions for information on who must complete this line, including covered relationships and transaction thresholds

	(a) Name of related organization	(b) Transaction type (a-s)	(c) Amount involved	(d) Method of determining amount involved
(1)				
(2)				
(3)				
(4)				
(5)				
(6)				

**Part VI** Unrelated Organizations Taxable as a Partnership Complete if the organization answered "Yes" on Form 990, Part IV, line 37.

Provide the following information for each entity taxed as a partnership through which the organization conducted more than five percent of its activities (measured by total assets or gross revenue) that was not a related organization. See instructions regarding exclusion for certain investment partnerships.

(a) Name, address, and EIN of entity	(b) Primary activity	(c) Legal domicile (state or foreign country)	(d) Predominant income (related, unrelated, excluded from tax under section 512-514)	(e) Are all partners section 501(c)(3) organizations?		(f) Share of total income	(g) Share of end-of-year assets	(h) Disproportionate allocations?		(i) Code V-UBI amount in box 20 of Schedule K-1 (Form 1065)	(j) General or managing partner?		(k) Percentage ownership
				Yes	No			Yes	No		Yes	No	
(1) -----													
(2) -----													
(3) -----													
(4) -----													
(5) -----													
(6) -----													
(7) -----													
(8) -----													
(9) -----													
(10) -----													
(11) -----													
(12) -----													
(13) -----													
(14) -----													
(15) -----													
(16) -----													

**Part VII** **Supplemental Information**

Complete this part to provide additional information for responses to questions on Schedule R (see instructions)



# Calista Heritage Foundation Scholarship Application

*Our mission is to celebrate and promote Yuuyaraq, the traditional/cultural way of being in the Calista region and inspire and support our people to achieve their dreams through education.*

***Qigcikiyaraq-Respect***

***Tuvqakiyaraq-Share***

***Elicaryaraq-Teach and Study***

***Ellangqerrluni Yuuyaraq-Awareness***

***Ilakuyucaraq-Family/Community***

***Ilakuyucaraq- Being helpful and Supportive***



*"Take these teachings and put them in your minds so that you will live with recognition"*

**APPLY ON-LINE – <http://www.calistaheritage.org>**

-John Phillip, Calista Elder

**The Calista Scholarship is funded by donations and fundraising through Calista Heritage Foundation. The Calista Scholarship Fund was established in 1994 and has 501 (c) (3) recognition under the Internal Revenue Service making donors eligible to receive tax deductible status on donations and gifts to the Calista Heritage Foundation.**

## **Criteria for Eligibility:**

**CALISTA CORPORATION ENROLLEE OR DIRECT DESCENDENT:** Applicant must be an original enrollee of the Calista Corporation or a direct descendant of a Calista Shareholder. Lineal descendants must submit a true and correct copy of their birth certificate. Shareholders must provide a copy of their Bureau of Indian Affairs (BIA) Certificate Degree of Indian Blood (CDIB).

**SCHOOL STATUS:** Applicant must be accepted to an accredited school (vocational, trade, college, university) or provide a current letter of good academic standing from the school. The applicant must be considered **full-time** or **part-time** based on the schools requirements.

**Full-time** students must be enrolled in 12 or more credits. Graduate students must be enrolled in 9 or more credits.  
**Part-time** students must be enrolled in 6-11 credits. Graduate students must be enrolled in 2-8 credits.

**GRADE POINT AVERAGE (GPA):** Applicant must be a high school graduate or have earned a General Equivalency Diploma (GED), be in good academic standing, and have a cumulative GPA of at least 2.0. Applicants must submit recent **official** transcripts.

## **Application Checklist:**

### **New applicant -must submit:**

- 1 ☐ Application form
- 2 ☐ Copy of birth certificate (if descendant) or copy of BIA/CDIB (if Calista Shareholder)
- 3 ☐ Letter of acceptance or current letter of good standing from an accredited school
- 4 ☐ Recent official transcripts
- 5 ☐ Cost information sheet from school planning to attend
- 6 ☐ One page typed personal statement (see page 4)
- 7 ☐ One complete reference form (see page 5)
- 8 ☐ Class schedule

Returning Applicant – submit only updated Official Transcript and upcoming Class Schedule

## **Contact**

Calista Heritage Foundation  
Education and Development Administrator  
301 Calista Court, Suite A  
Anchorage, AK 99518-3028  
Phone: (907) 279-5516 or Toll-free: (800) 277-5516  
Email: [scholarships@calistacorp.com](mailto:scholarships@calistacorp.com)  
Fax: (907) 279-8430

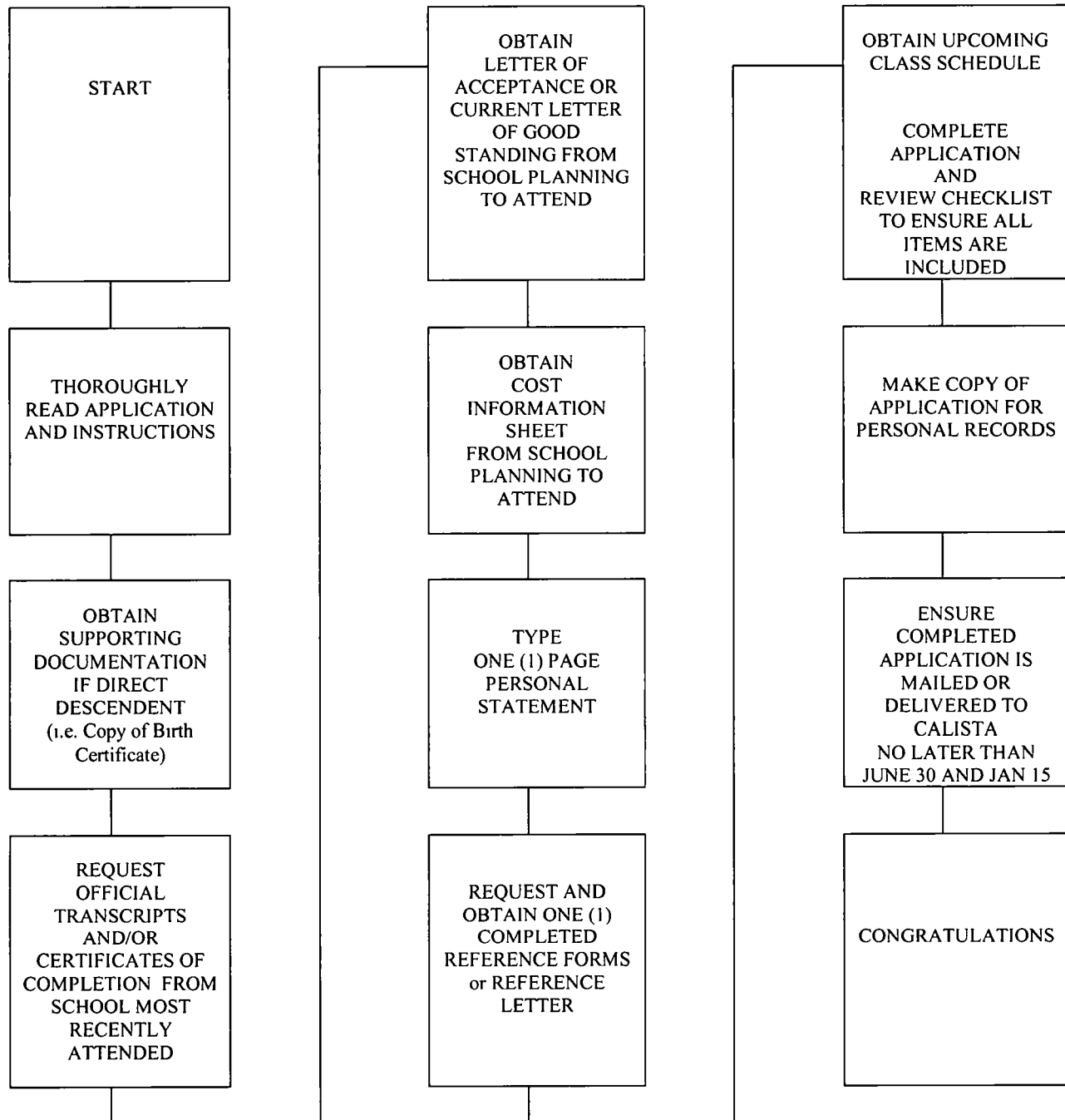
# **APPLICATIONS DUE**

## **June 30 and Jan 15**



# Calista Heritage Foundation Scholarship Application

## PROCESS FLOW CHART





# Calista Heritage Foundation Scholarship Application

**APPLICANT – Apply On-line – <http://www.calistaheritage.org>**

APPLICATION STATUS			I AM A		
<input type="checkbox"/> NEW APPLICANT		<input type="checkbox"/> RETURNING APPLICANT	<input type="checkbox"/> FULL-TIME APPLICANT		<input type="checkbox"/> PART-TIME APPLICANT
FIRST NAME	MI	LAST NAME	E-MAIL	HOME PHONE	CELL PHONE
GENDER	BIRTHDATE	SOCIAL SECURITY NUMBER			
<input type="checkbox"/> MALE <input type="checkbox"/> FEMALE					
ADDRESS AT SCHOOL (if different from permanent address)			PERMANENT ADDRESS (correspondence will be mailed to this address)		
CITY	STATE	ZIP	CITY	STATE	ZIP

## SHAREHOLDER INFORMATION

I certify that I am a <input type="checkbox"/> Calista Shareholder <input type="checkbox"/> Direct Descendent of a Calista Shareholder		
If you are a direct descendent, provide name(s) of the shareholder of family member(s) enrolled in Calista Corporation and submit a true and correct copy of your birth certificate or a copy of your BIA Certificate Degree of Indian Blood (CDIB) with this application		
PARENT NAME (and date of birth)	GRANDPARENT NAME (and date of birth)	GREAT-GRANDPARENT NAME (and DOB)
PARENT NAME (and date of birth)	GRANDPARENT NAME (and date of birth)	GREAT-GRANDPARENT NAME (and DOB)

Village Tie: \_\_\_\_\_

## EDUCATION PLAN

[ ] ATTACH A LETTER OF ACCEPTANCE (if new applicant) or CURRENT LETTER OF GOOD STANDING (if returning applicant)

SCHOOL CALENDAR BASED ON		ACCREDITED SCHOOL (VOCATIONAL, TRADE, COLLEGE, UNIVERSITY) PLANNING TO ATTEND			
<input type="checkbox"/> SEMESTERS <input type="checkbox"/> QUARTERS					
PLANNED DEGREE	PLANNED STATUS	FIELD OF STUDY (major)	SCHOOL FINANCIAL AID OFFICE ADDRESS		
<input type="checkbox"/> 2-YR ASSOCIATE <input type="checkbox"/> 4-YR BACHELOR <input type="checkbox"/> MASTER <input type="checkbox"/> DOCTORATE <input type="checkbox"/> CERTIFICATE <input type="checkbox"/> OTHER	<input type="checkbox"/> FRESHMAN <input type="checkbox"/> SOPHOMORE <input type="checkbox"/> JUNIOR <input type="checkbox"/> SENIOR <input type="checkbox"/> CERTIFICATE <input type="checkbox"/> OTHER	FIELD OF STUDY (minor)	CITY	STATE	ZIP
		FIELD OF STUDY (other)	PHONE	FAX	
		PLANNED CREDITS	IS THIS CONSIDERED FULL-TIME	SEMESTER/TERM START DATE	EXPECTED GRADUATION DATE
	<input type="checkbox"/> YES <input type="checkbox"/> NO				

## EDUCATION HISTORY

[ ] INCLUDE OFFICIAL TRANSCRIPTS AND/OR CERTIFICATES OF COMPLETION FROM SCHOOL MOST RECENTLY ATTENDED

HIGH SCHOOL	CITY	STATE	START DATE	GRADUATION DATE	DID YOU COMPLETE A GED <input type="checkbox"/> YES <input type="checkbox"/> NO		
POSTSECONDARY SCHOOLS	CITY	STATE	START DATE	GRADUATION DATE	GED COMPLETION DATE		
					MAJOR	DEGREE	CREDITS EARNED



# Calista Heritage Foundation Scholarship Application

## Scholarship award:

Calista Scholarship awards are awarded on a Fall/Spring semester basis as follows

**Full-time status students** Usually a student is considered full-time if they are an undergraduate student signed up for 12 or more credit hours per semester or a graduate student signed up for 9 or more credit hours per semester

**Part-time status students** Usually a student is considered part-time if they are an undergraduate student signed up for 6-11 credit hours per semester or a graduate student signed up for 2-8 credits per semester

GPA	Full-time status	Part-time status
2.0-2.49	\$500	\$250
2.5-2.99	\$750	\$375
3.0 or higher	\$1000	\$500
Graduate recipients	\$1500	\$750

The Calista Scholarship award is mailed directly to the recipient's school financial aid office. The recipient must provide Calista Heritage Foundation with the correct address for the financial aid office.

## EDUCATION BUDGET

[ ] OR ATTACH COST INFORMATION SHEET FROM SCHOOL PLANNING TO ATTEND

EXPENSES	AMOUNT	FUNDING SOURCE	AMOUNT
TUITION	_____	PERSONAL / FAMILY CONTRIBUTION e.g. PFD	_____
FEES	_____	TUITION WAIVER	_____
BOOKS AND REQUIRED SUPPLIES	_____	SCHOLARSHIPS (specify)	_____
ON-CAMPUS HOUSING / OFF-CAMPUS RENT	_____	TRIBAL SCHOLARSHIP/GRANTS e.g. Pell Grant (specify)	_____
MEALS	_____	STATE/FEDERAL LOANS e.g. Alaska Student Loan (specify)	_____
OTHER (specify):	_____	OTHER SOURCES e.g. Veterans, Social Security, etc. (specify)	_____
<b>TOTAL EXPENSES:</b>	_____	<b>TOTAL CONTRIBUTION:</b>	_____
		<b>FINANCIAL NEED (TOTAL CONTRIBUTION - TOTAL EXPENSES):</b>	_____

## PERSONAL STATEMENT

[ ] ATTACH A ONE (1) PAGE TYPED (additional pages will not be reviewed) PERSONAL STATEMENT INCLUDING

1. What are your educational and career goals and how do you plan to achieve them?
2. What encouraged you to pursue your educational and career goals?
3. What will you do to contribute to the community upon completion of your educational and career goals?



# Calista Heritage Foundation Scholarship Application

[ ] OR ATTACH ONE (1) COMPLETE REFERENCE LETTER

## CALISTA SCHOLARSHIP REFERENCE FORM

The applicant below is applying for the Calista Scholarship, which is funded by the Calista Heritage Foundation. The purpose of the Calista Heritage Foundation according to the Articles of Incorporation state:

*Provide financial assistance to Alaska Natives to enable recipients to participate in continuing educational activities, formal programs of study and programs to improve the status of Alaska Natives.*

Please complete the Calista Scholarship Reference Form and return to the applicant

### APPLICANT INFORMATION

FIRST NAME	MI	LAST NAME
------------	----	-----------

REFERENCE INFORMATION (must not be related to applicant by blood or marriage):

FIRST NAME	MI	LAST NAME	RELATION TO APPLICANT (e.g. teacher, employer, etc.)	DATE	
ADDRESS			E-MAIL	HOME PHONE	CELL PHONE
CITY		STATE	ZIP	OCCUPATION	EMPLOYER
PLEASE PROVIDE A WRITTEN RESPONSE					
How do you know the applicant?					
What is your knowledge of the applicant's education and/or work experience and accomplishments?					
What is your knowledge of the applicant's potential to accomplish their educational and career goals?					

I certify that I am not related to the applicant by blood or marriage and that all information provided on this Calista Scholarship Reference Form is true and correct.

\_\_\_\_\_  
Print Name of Reference

\_\_\_\_\_  
Signature

\_\_\_\_\_  
Date



# Calista Heritage Foundation Scholarship Application

## ASSIGNMENT OF RIGHTS/WAIVER OF LIABILITY

I, the undersigned, have the authority to hereby grant Calista Heritage Foundation and its affiliates, including Calista Corporation (Collectively referred to as "Calista") the right and permission to use, at Calista's discretion, photographs and images of me, as well as my biographical information disclosed to Calista by me for promotional and/or informational purposes. I understand that no monetary or other compensation will be offered to me in exchange for these rights and permissions. Usage encompasses, but is not limited to, newsletters, printed publications and other collateral, internet and web sites, advertising, video and/or audio presentations. I forever release, discharge, and agree to hold Calista and its affiliates, officers, directors, employees, and agents harmless from any liability by virtue of any use whatsoever of said photographs, images or biological information.

\_\_\_\_\_  
Applicant Permanent Mailing Address, City, State, Zip

\_\_\_\_\_  
Applicant Phone

\_\_\_\_\_  
Print Name of Applicant

\_\_\_\_\_  
Signature

\_\_\_\_\_  
Date

\_\_\_\_\_  
Print Name of Parent or Legal Guardian (if subject is a minor)

\_\_\_\_\_  
Signature

\_\_\_\_\_  
Date

## STATEMENT

**APPLICATION:** I certify that all information and documentation in this application including, but not limited to the application, birth certificate or CIB, letter of acceptance or current good standing, official transcripts and/or certificates of completion, budget information and forms, personal statement, reference form, class schedule and any other supporting materials, is true and correct. I understand this application does not commit Calista Heritage Foundation to award a scholarship. I also understand any decisions made by Calista Heritage Foundation are final. I understand **LATE and INCOMPLETE** applications will not be reviewed, additional materials will be discarded, and submitted materials become the sole property of Calista Heritage Foundation and cannot be returned.

**USE OF FUNDS** I understand the scholarship, if awarded, will be used to further my education in the educational program approved by Calista Heritage Foundation. If for any reason the scholarship is not used for the educational program approved by Calista Heritage Foundation and/or I do not fulfill the scholarship requirements which may include, but are not limited to, withdrawing from school and/or incompleting of courses; I understand I may not be permitted to apply for the Calista Scholarship for one (1) full academic year from the initial date of award. Each situation will be reviewed on a case by case basis and all decisions made by Calista Heritage Foundation are final. I understand I must immediately notify Calista Heritage Foundation of any changes to my academic status.

**OFFICIAL TRANSCRIPTS:** I understand and agree to have the official transcripts from my school delivered to the office of Calista Heritage Foundation no later than January 15 and/or June 30th. I understand scholarship funds will not be sent by Calista Heritage Foundation to the school without the most **recent** official transcripts.

**STATUS AND GPA:** I understand, I must maintain a full-time or part-time status confirmed by my educational program and a cumulative GPA of 2.0 or higher for the entire academic year.

I have read and understand the "Statement" and, if approved, agree to abide by the terms and conditions of the scholarship.

\_\_\_\_\_  
Print Name of Applicant

\_\_\_\_\_  
Signature

\_\_\_\_\_  
Date

\_\_\_\_\_  
Print Name of Parent or Legal Guardian (if subject is a minor) Signature

\_\_\_\_\_  
Date