



See a Social Security Number? Say Something!
Report Privacy Problems to <https://public.resource.org/privacy>
Or call the IRS Identity Theft Hotline at 1-800-908-4490



Form **990**
 Department of the Treasury
 Internal Revenue Service

Return of Organization Exempt From Income Tax
Under section 501(c), 527, or 4947(a)(1) of the Internal Revenue Code (except black lung benefit trust or private foundation)
 The organization may have to use a copy of this return to satisfy state reporting requirements

OMB No 1545-0047
2012
Open to Public Inspection

A For the 2012 calendar year, or tax year beginning 07-01-2012, 2012, and ending 06-30-2013

B Check if applicable:
 Address change
 Name change
 Initial return
 Terminated
 Amended return
 Application pending

C Name of organization: Aspenpointe Inc
 Doing Business As: FKA PIKES PEAK INTEGRATED SOLUTIONS
 Number and street (or P O box if mail is not delivered to street address) Room/suite: 675 Southpointe Ct Suite 210
 City or town, state or country, and ZIP + 4: Colorado Springs, CO 80906

D Employer identification number: 42-1600485
E Telephone number: (719) 572-6150
G Gross receipts \$ 34,847,002

F Name and address of principal officer: Dr Mick Pattinson, 675 Southpointe Ct Suite 210, Colorado Springs, CO 80906

H(a) Is this a group return for affiliates? Yes No
H(b) Are all affiliates included? Yes No
 If "No," attach a list (see instructions)
H(c) Group exemption number: 9701

I Tax-exempt status: 501(c)(3) 501(c) () (Insert no) 4947(a)(1) or 527

J Website: WWW ASPENPOINTE ORG

K Form of organization: Corporation Trust Association Other
L Year of formation: 2003 **M** State of legal domicile: CO

Part I Summary

Activities & Governance	1 Briefly describe the organization's mission or most significant activities ASPENPOINTE PROVIDES INNOVATIVE SOLUTIONS TO SOLVE SOME OF OUR COMMUNITY'S LARGEST SOCIAL ISSUES (ACCESS TO AFFORDABLE HEALTHCARE, UNEMPLOYMENT, AND LACK OF EDUCATION) ONE PERSON AT A TIME		
	2 Check this box <input type="checkbox"/> if the organization discontinued its operations or disposed of more than 25% of its net assets		
	3 Number of voting members of the governing body (Part VI, line 1a)	3	19
	4 Number of independent voting members of the governing body (Part VI, line 1b)	4	19
	5 Total number of individuals employed in calendar year 2012 (Part V, line 2a)	5	722
	6 Total number of volunteers (estimate if necessary)	6	19
	7a Total unrelated business revenue from Part VIII, column (C), line 12	7a	0
b Net unrelated business taxable income from Form 990-T, line 34	7b		
Revenue	8 Contributions and grants (Part VIII, line 1h)	Prior Year	Current Year
	9 Program service revenue (Part VIII, line 2g)	17,860	41,986
	10 Investment income (Part VIII, column (A), lines 3, 4, and 7d)	33,215,736	34,736,945
	11 Other revenue (Part VIII, column (A), lines 5, 6d, 8c, 9c, 10c, and 11e)	4,113	4,217
	12 Total revenue—add lines 8 through 11 (must equal Part VIII, column (A), line 12)	16,268	4,718
Expenses	13 Grants and similar amounts paid (Part IX, column (A), lines 1–3)	33,253,977	34,787,866
	14 Benefits paid to or for members (Part IX, column (A), line 4)	2,020	100
	15 Salaries, other compensation, employee benefits (Part IX, column (A), lines 5–10)	0	0
	16a Professional fundraising fees (Part IX, column (A), line 11e)	5,657,407	5,773,001
	b Total fundraising expenses (Part IX, column (D), line 25) <u>170,413</u>	190,007	16,640
	17 Other expenses (Part IX, column (A), lines 11a–11d, 11f–24e)	24,840,802	28,585,124
	18 Total expenses Add lines 13–17 (must equal Part IX, column (A), line 25)	30,690,236	34,374,865
19 Revenue less expenses Subtract line 18 from line 12	2,563,741	413,001	
Net Assets or Fund Balances	20 Total assets (Part X, line 16)	Beginning of Current Year	End of Year
	21 Total liabilities (Part X, line 26)	18,863,792	20,882,469
	22 Net assets or fund balances Subtract line 21 from line 20	3,512,727	4,862,316
		15,351,065	16,020,153

Part II Signature Block

Under penalties of perjury, I declare that I have examined this return, including accompanying schedules and statements, and to the best of my knowledge and belief, it is true, correct, and complete Declaration of preparer (other than officer) is based on all information of which preparer has any knowledge

Sign Here
 Signature of officer: *****
 Date: 2014-04-25
 Type or print name and title: LLOYD K LIGHT CHIEF FINANCIAL OFFICER

Paid Preparer Use Only

Prnt/Type preparer's name	Preparer's signature	Date	Check <input type="checkbox"/> if self-employed	PTIN
Firm's name: BKD LLP			Firm's EIN:	
Firm's address: 111 South Tejon Suite 800 Colorado Springs, CO 809039848			Phone no: (719) 471-4290	

May the IRS discuss this return with the preparer shown above? (see instructions) Yes No

Part III Statement of Program Service Accomplishments

Check if Schedule O contains a response to any question in this Part III Yes No

1 Briefly describe the organization's mission

Among other things, AspenPointe provides behavioral health care services to individuals in the Pikes Peak Region and beyond. AspenPointe provided \$5,682,956 in charity care for the year ending 6/30/2013. AspenPointe and its subsidiaries had approximately 140,434 outpatient visits for the year ending 6/30/2013.

2 Did the organization undertake any significant program services during the year which were not listed on the prior Form 990 or 990-EZ? Yes No

If "Yes," describe these new services on Schedule O

3 Did the organization cease conducting, or make significant changes in how it conducts, any program services? Yes No

If "Yes," describe these changes on Schedule O

4 Describe the organization's program service accomplishments for each of its three largest program services, as measured by expenses. Section 501(c)(3) and 501(c)(4) organizations are required to report the amount of grants and allocations to others, the total expenses, and revenue, if any, for each program service reported.

4a (Code) (Expenses \$ 26,084,409 including grants of \$ 100) (Revenue \$ 34,747,783)
SEE SCHEDULE O FOR DESCRIPTION OF EXEMPT PURPOSE ACHIEVEMENTS RELATED TO CREATING OPPORTUNITIES AND PROVIDING BEHAVIORAL HEALTH SOLUTIONS FOR INDIVIDUALS AND COMMUNITIES

4b (Code) (Expenses \$ including grants of \$) (Revenue \$)

4c (Code) (Expenses \$ including grants of \$) (Revenue \$)

4d Other program services (Describe in Schedule O)
(Expenses \$ including grants of \$) (Revenue \$)

4e Total program service expenses 26,084,409

Part IV Checklist of Required Schedules

	Yes	No
1 Is the organization described in section 501(c)(3) or 4947(a)(1) (other than a private foundation)? <i>If "Yes," complete Schedule A</i> <input checked="" type="checkbox"/>	Yes	
2 Is the organization required to complete <i>Schedule B, Schedule of Contributors</i> (see instructions)? <input checked="" type="checkbox"/>	Yes	
3 Did the organization engage in direct or indirect political campaign activities on behalf of or in opposition to candidates for public office? <i>If "Yes," complete Schedule C, Part I</i> <input checked="" type="checkbox"/>		No
4 Section 501(c)(3) organizations. Did the organization engage in lobbying activities, or have a section 501(h) election in effect during the tax year? <i>If "Yes," complete Schedule C, Part II</i> <input checked="" type="checkbox"/>	Yes	
5 Is the organization a section 501(c)(4), 501(c)(5), or 501(c)(6) organization that receives membership dues, assessments, or similar amounts as defined in Revenue Procedure 98-19? <i>If "Yes," complete Schedule C, Part III</i> <input checked="" type="checkbox"/>		No
6 Did the organization maintain any donor advised funds or any similar funds or accounts for which donors have the right to provide advice on the distribution or investment of amounts in such funds or accounts? <i>If "Yes," complete Schedule D, Part I</i> <input checked="" type="checkbox"/>		No
7 Did the organization receive or hold a conservation easement, including easements to preserve open space, the environment, historic land areas, or historic structures? <i>If "Yes," complete Schedule D, Part II</i> <input checked="" type="checkbox"/>		No
8 Did the organization maintain collections of works of art, historical treasures, or other similar assets? <i>If "Yes," complete Schedule D, Part III</i> <input checked="" type="checkbox"/>		No
9 Did the organization report an amount in Part X, line 21 for escrow or custodial account liability, serve as a custodian for amounts not listed in Part X, or provide credit counseling, debt management, credit repair, or debt negotiation services? <i>If "Yes," complete Schedule D, Part IV</i> <input checked="" type="checkbox"/>		No
10 Did the organization, directly or through a related organization, hold assets in temporarily restricted endowments, permanent endowments, or quasi-endowments? <i>If "Yes," complete Schedule D, Part V</i> <input checked="" type="checkbox"/>		No
11 If the organization's answer to any of the following questions is "Yes," then complete Schedule D, Parts VI, VII, VIII, IX, or X as applicable		
a Did the organization report an amount for land, buildings, and equipment in Part X, line 10? <i>If "Yes," complete Schedule D, Part VI</i> <input checked="" type="checkbox"/>	Yes	
b Did the organization report an amount for investments—other securities in Part X, line 12 that is 5% or more of its total assets reported in Part X, line 16? <i>If "Yes," complete Schedule D, Part VII</i> <input checked="" type="checkbox"/>		No
c Did the organization report an amount for investments—program related in Part X, line 13 that is 5% or more of its total assets reported in Part X, line 16? <i>If "Yes," complete Schedule D, Part VIII</i> <input checked="" type="checkbox"/>	Yes	
d Did the organization report an amount for other assets in Part X, line 15 that is 5% or more of its total assets reported in Part X, line 16? <i>If "Yes," complete Schedule D, Part IX</i> <input checked="" type="checkbox"/>		No
e Did the organization report an amount for other liabilities in Part X, line 25? <i>If "Yes," complete Schedule D, Part X</i> <input checked="" type="checkbox"/>		No
f Did the organization's separate or consolidated financial statements for the tax year include a footnote that addresses the organization's liability for uncertain tax positions under FIN 48 (ASC 740)? <i>If "Yes," complete Schedule D, Part X</i> <input checked="" type="checkbox"/>		No
12a Did the organization obtain separate, independent audited financial statements for the tax year? <i>If "Yes," complete Schedule D, Parts XI and XII</i> <input checked="" type="checkbox"/>		No
b Was the organization included in consolidated, independent audited financial statements for the tax year? <i>If "Yes," and if the organization answered "No" to line 12a, then completing Schedule D, Parts XI and XII is optional</i> <input checked="" type="checkbox"/>	Yes	
13 Is the organization a school described in section 170(b)(1)(A)(ii)? <i>If "Yes," complete Schedule E</i>		No
14a Did the organization maintain an office, employees, or agents outside of the United States?		No
b Did the organization have aggregate revenues or expenses of more than \$10,000 from grantmaking, fundraising, business, investment, and program service activities outside the United States, or aggregate foreign investments valued at \$100,000 or more? <i>If "Yes," complete Schedule F, Parts I and IV</i>		No
15 Did the organization report on Part IX, column (A), line 3, more than \$5,000 of grants or assistance to any organization or entity located outside the United States? <i>If "Yes," complete Schedule F, Parts II and IV</i>		No
16 Did the organization report on Part IX, column (A), line 3, more than \$5,000 of aggregate grants or assistance to individuals located outside the United States? <i>If "Yes," complete Schedule F, Parts III and IV</i>		No
17 Did the organization report a total of more than \$15,000 of expenses for professional fundraising services on Part IX, column (A), lines 6 and 11e? <i>If "Yes," complete Schedule G, Part I (see instructions)</i> <input checked="" type="checkbox"/>	Yes	
18 Did the organization report more than \$15,000 total of fundraising event gross income and contributions on Part VIII, lines 1c and 8a? <i>If "Yes," complete Schedule G, Part II</i> <input checked="" type="checkbox"/>	Yes	
19 Did the organization report more than \$15,000 of gross income from gaming activities on Part VIII, line 9a? <i>If "Yes," complete Schedule G, Part III</i> <input checked="" type="checkbox"/>		No
20a Did the organization operate one or more hospital facilities? <i>If "Yes," complete Schedule H</i>		No
b If "Yes" to line 20a, did the organization attach a copy of its audited financial statements to this return?		

Part IV Checklist of Required Schedules (continued)

21	Did the organization report more than \$5,000 of grants and other assistance to any government or organization in the United States on Part IX, column (A), line 1? <i>If "Yes," complete Schedule I, Parts I and II</i>	21		No
22	Did the organization report more than \$5,000 of grants and other assistance to individuals in the United States on Part IX, column (A), line 2? <i>If "Yes," complete Schedule I, Parts I and III</i>	22		No
23	Did the organization answer "Yes" to Part VII, Section A, line 3, 4, or 5 about compensation of the organization's current and former officers, directors, trustees, key employees, and highest compensated employees? <i>If "Yes," complete Schedule J</i>	23	Yes	
24a	Did the organization have a tax-exempt bond issue with an outstanding principal amount of more than \$100,000 as of the last day of the year, that was issued after December 31, 2002? <i>If "Yes," answer lines 24b through 24d and complete Schedule K. If "No," go to line 25</i>	24a		No
b	Did the organization invest any proceeds of tax-exempt bonds beyond a temporary period exception?	24b		
c	Did the organization maintain an escrow account other than a refunding escrow at any time during the year to defease any tax-exempt bonds?	24c		
d	Did the organization act as an "on behalf of" issuer for bonds outstanding at any time during the year?	24d		
25a	Section 501(c)(3) and 501(c)(4) organizations. Did the organization engage in an excess benefit transaction with a disqualified person during the year? <i>If "Yes," complete Schedule L, Part I</i>	25a		No
b	Is the organization aware that it engaged in an excess benefit transaction with a disqualified person in a prior year, and that the transaction has not been reported on any of the organization's prior Forms 990 or 990-EZ? <i>If "Yes," complete Schedule L, Part I</i>	25b		No
26	Was a loan to or by a current or former officer, director, trustee, key employee, highest compensated employee, or disqualified person outstanding as of the end of the organization's tax year? <i>If "Yes," complete Schedule L, Part II</i>	26		No
27	Did the organization provide a grant or other assistance to an officer, director, trustee, key employee, substantial contributor or employee thereof, a grant selection committee member, or to a 35% controlled entity or family member of any of these persons? <i>If "Yes," complete Schedule L, Part III</i>	27		No
28	Was the organization a party to a business transaction with one of the following parties (see Schedule L, Part IV instructions for applicable filing thresholds, conditions, and exceptions)			
a	A current or former officer, director, trustee, or key employee? <i>If "Yes," complete Schedule L, Part IV</i>	28a		No
b	A family member of a current or former officer, director, trustee, or key employee? <i>If "Yes," complete Schedule L, Part IV</i>	28b		No
c	An entity of which a current or former officer, director, trustee, or key employee (or a family member thereof) was an officer, director, trustee, or direct or indirect owner? <i>If "Yes," complete Schedule L, Part IV</i>	28c		No
29	Did the organization receive more than \$25,000 in non-cash contributions? <i>If "Yes," complete Schedule M</i>	29		No
30	Did the organization receive contributions of art, historical treasures, or other similar assets, or qualified conservation contributions? <i>If "Yes," complete Schedule M</i>	30		No
31	Did the organization liquidate, terminate, or dissolve and cease operations? <i>If "Yes," complete Schedule N, Part I</i>	31		No
32	Did the organization sell, exchange, dispose of, or transfer more than 25% of its net assets? <i>If "Yes," complete Schedule N, Part II</i>	32		No
33	Did the organization own 100% of an entity disregarded as separate from the organization under Regulations sections 301.7701-2 and 301.7701-3? <i>If "Yes," complete Schedule R, Part I</i>	33	Yes	
34	Was the organization related to any tax-exempt or taxable entity? <i>If "Yes," complete Schedule R, Part II, III, or IV, and Part V, line 1</i>	34	Yes	
35a	Did the organization have a controlled entity within the meaning of section 512(b)(13)?	35a	Yes	
b	If 'Yes' to line 35a, did the organization receive any payment from or engage in any transaction with a controlled entity within the meaning of section 512(b)(13)? <i>If "Yes," complete Schedule R, Part V, line 2</i>	35b	Yes	
36	Section 501(c)(3) organizations. Did the organization make any transfers to an exempt non-charitable related organization? <i>If "Yes," complete Schedule R, Part V, line 2</i>	36		No
37	Did the organization conduct more than 5% of its activities through an entity that is not a related organization and that is treated as a partnership for federal income tax purposes? <i>If "Yes," complete Schedule R, Part VI</i>	37		No
38	Did the organization complete Schedule O and provide explanations in Schedule O for Part VI, lines 11b and 19? Note. All Form 990 filers are required to complete Schedule O	38	Yes	

Part V Statements Regarding Other IRS Filings and Tax Compliance

Check if Schedule O contains a response to any question in this Part V

		Yes	No
1a	Enter the number reported in Box 3 of Form 1096. Enter -0- if not applicable		
1a	50		
1b	Enter the number of Forms W-2G included in line 1a. Enter -0- if not applicable		
1b	0		
1c	Did the organization comply with backup withholding rules for reportable payments to vendors and reportable gaming (gambling) winnings to prize winners?	Yes	
2a	Enter the number of employees reported on Form W-3, Transmittal of Wage and Tax Statements, filed for the calendar year ending with or within the year covered by this return		
2a	722		
2b	If at least one is reported on line 2a, did the organization file all required federal employment tax returns? Note. If the sum of lines 1a and 2a is greater than 250, you may be required to e-file (see instructions)	Yes	
3a	Did the organization have unrelated business gross income of \$1,000 or more during the year?		No
3b	If "Yes," has it filed a Form 990-T for this year? If "No," provide an explanation in Schedule O		
4a	At any time during the calendar year, did the organization have an interest in, or a signature or other authority over, a financial account in a foreign country (such as a bank account, securities account, or other financial account)?		No
b	If "Yes," enter the name of the foreign country <input type="checkbox"/> _____ See instructions for filing requirements for Form TD F 90-22.1, Report of Foreign Bank and Financial Accounts		
5a	Was the organization a party to a prohibited tax shelter transaction at any time during the tax year?		No
5b	Did any taxable party notify the organization that it was or is a party to a prohibited tax shelter transaction?		No
5c	If "Yes," to line 5a or 5b, did the organization file Form 8886-T?		
6a	Does the organization have annual gross receipts that are normally greater than \$100,000, and did the organization solicit any contributions that were not tax deductible as charitable contributions?		No
6b	If "Yes," did the organization include with every solicitation an express statement that such contributions or gifts were not tax deductible?		
7	Organizations that may receive deductible contributions under section 170(c).		
7a	Did the organization receive a payment in excess of \$75 made partly as a contribution and partly for goods and services provided to the payor?	Yes	
7b	If "Yes," did the organization notify the donor of the value of the goods or services provided?	Yes	
7c	Did the organization sell, exchange, or otherwise dispose of tangible personal property for which it was required to file Form 8282?		No
7d	If "Yes," indicate the number of Forms 8282 filed during the year		
7e	Did the organization receive any funds, directly or indirectly, to pay premiums on a personal benefit contract?		No
7f	Did the organization, during the year, pay premiums, directly or indirectly, on a personal benefit contract?		No
7g	If the organization received a contribution of qualified intellectual property, did the organization file Form 8899 as required?		
7h	If the organization received a contribution of cars, boats, airplanes, or other vehicles, did the organization file a Form 1098-C?		
8	Sponsoring organizations maintaining donor advised funds and section 509(a)(3) supporting organizations. Did the supporting organization, or a donor advised fund maintained by a sponsoring organization, have excess business holdings at any time during the year?		
9	Sponsoring organizations maintaining donor advised funds.		
9a	Did the organization make any taxable distributions under section 4966?		
9b	Did the organization make a distribution to a donor, donor advisor, or related person?		
10	Section 501(c)(7) organizations. Enter		
10a	Initiation fees and capital contributions included on Part VIII, line 12		
10b	Gross receipts, included on Form 990, Part VIII, line 12, for public use of club facilities		
11	Section 501(c)(12) organizations. Enter		
11a	Gross income from members or shareholders		
11b	Gross income from other sources (Do not net amounts due or paid to other sources against amounts due or received from them)		
12a	Section 4947(a)(1) non-exempt charitable trusts. Is the organization filing Form 990 in lieu of Form 1041?		
12b	If "Yes," enter the amount of tax-exempt interest received or accrued during the year		
13	Section 501(c)(29) qualified nonprofit health insurance issuers.		
13a	Is the organization licensed to issue qualified health plans in more than one state? Note. See the instructions for additional information the organization must report on Schedule O		
13b	Enter the amount of reserves the organization is required to maintain by the states in which the organization is licensed to issue qualified health plans		
13c	Enter the amount of reserves on hand		
14a	Did the organization receive any payments for indoor tanning services during the tax year?		No
14b	If "Yes," has it filed a Form 720 to report these payments? If "No," provide an explanation in Schedule O		

Part VI Governance, Management, and Disclosure For each "Yes" response to lines 2 through 7b below, and for a "No" response to lines 8a, 8b, or 10b below, describe the circumstances, processes, or changes in Schedule O. See instructions.

Check if Schedule O contains a response to any question in this Part VI [X]

Section A. Governing Body and Management

Table with 3 columns: Question, Yes, No. Rows include: 1a Enter the number of voting members of the governing body at the end of the tax year (19); 1b Enter the number of voting members included in line 1a, above, who are independent (19); 2 Did any officer, director, trustee, or key employee have a family relationship or a business relationship with any other officer, director, trustee, or key employee? (Yes); 3 Did the organization delegate control over management duties customarily performed by or under the direct supervision of officers, directors or trustees, or key employees to a management company or other person? (No); 4 Did the organization make any significant changes to its governing documents since the prior Form 990 was filed? (No); 5 Did the organization become aware during the year of a significant diversion of the organization's assets? (No); 6 Did the organization have members or stockholders? (No); 7a Did the organization have members, stockholders, or other persons who had the power to elect or appoint one or more members of the governing body? (No); 7b Are any governance decisions of the organization reserved to (or subject to approval by) members, stockholders, or persons other than the governing body? (No); 8 Did the organization contemporaneously document the meetings held or written actions undertaken during the year by the following: 8a The governing body? (Yes); 8b Each committee with authority to act on behalf of the governing body? (Yes); 9 Is there any officer, director, trustee, or key employee listed in Part VII, Section A, who cannot be reached at the organization's mailing address? If "Yes," provide the names and addresses in Schedule O (No).

Section B. Policies (This Section B requests information about policies not required by the Internal Revenue Code.)

Table with 3 columns: Question, Yes, No. Rows include: 10a Did the organization have local chapters, branches, or affiliates? (No); 10b If "Yes," did the organization have written policies and procedures governing the activities of such chapters, affiliates, and branches to ensure their operations are consistent with the organization's exempt purposes?; 11a Has the organization provided a complete copy of this Form 990 to all members of its governing body before filing the form? (Yes); 11b Describe in Schedule O the process, if any, used by the organization to review this Form 990; 12a Did the organization have a written conflict of interest policy? If "No," go to line 13 (Yes); 12b Were officers, directors, or trustees, and key employees required to disclose annually interests that could give rise to conflicts? (Yes); 12c Did the organization regularly and consistently monitor and enforce compliance with the policy? If "Yes," describe in Schedule O how this was done (Yes); 13 Did the organization have a written whistleblower policy? (Yes); 14 Did the organization have a written document retention and destruction policy? (Yes); 15 Did the process for determining compensation of the following persons include a review and approval by independent persons, comparability data, and contemporaneous substantiation of the deliberation and decision? 15a The organization's CEO, Executive Director, or top management official (No); 15b Other officers or key employees of the organization (No); 16a Did the organization invest in, contribute assets to, or participate in a joint venture or similar arrangement with a taxable entity during the year? (No); 16b If "Yes," did the organization follow a written policy or procedure requiring the organization to evaluate its participation in joint venture arrangements under applicable federal tax law, and take steps to safeguard the organization's exempt status with respect to such arrangements?

Section C. Disclosure

- 17 List the States with which a copy of this Form 990 is required to be filed; 18 Section 6104 requires an organization to make its Form 1023 (or 1024 if applicable), 990, and 990-T (501(c)(3)s only) available for public inspection. Indicate how you made these available. Check all that apply: [] Own website [] Another's website [X] Upon request [] Other (explain in Schedule O); 19 Describe in Schedule O whether (and if so, how), the organization made its governing documents, conflict of interest policy, and financial statements available to the public during the tax year; 20 State the name, physical address, and telephone number of the person who possesses the books and records of the organization: ASPENPOINTE INC 525 CASCADE Colorado Springs, CO (719) 572-6100

Part VII Compensation of Officers, Directors, Trustees, Key Employees, Highest Compensated Employees, and Independent Contractors

Check if Schedule O contains a response to any question in this Part VII

Section A. Officers, Directors, Trustees, Key Employees, and Highest Compensated Employees

1a Complete this table for all persons required to be listed Report compensation for the calendar year ending with or within the organization's tax year

• List all of the organization's **current** officers, directors, trustees (whether individuals or organizations), regardless of amount of compensation Enter -0- in columns (D), (E), and (F) if no compensation was paid

• List all of the organization's **current** key employees, if any See instructions for definition of "key employee "

• List the organization's five **current** highest compensated employees (other than an officer, director, trustee or key employee) who received reportable compensation (Box 5 of Form W-2 and/or Box 7 of Form 1099-MISC) of more than \$100,000 from the organization and any related organizations

• List all of the organization's **former** officers, key employees, or highest compensated employees who received more than \$100,000 of reportable compensation from the organization and any related organizations

• List all of the organization's **former directors or trustees** that received, in the capacity as a former director or trustee of the organization, more than \$10,000 of reportable compensation from the organization and any related organizations

List persons in the following order individual trustees or directors, institutional trustees, officers, key employees, highest compensated employees, and former such persons

Check this box if neither the organization nor any related organization compensated any current officer, director, or trustee

(A) Name and Title	(B) Average hours per week (list any hours for related organizations below dotted line)	(C) Position (do not check more than one box, unless person is both an officer and a director/trustee)						(D) Reportable compensation from the organization (W- 2/1099-MISC)	(E) Reportable compensation from related organizations (W- 2/1099-MISC)	(F) Estimated amount of other compensation from the organization and related organizations
		Individual trustee or director	Institutional Trustee	Officer	Key employee	Highest compensated employee	Former			
(1) CAROLENA STEEN PHD DIRECTOR	1 0	X								
(2) DR BILL CROUCH IMMEDIATE PAST CHAIR	1 0	X		X						
(3) Cathy Skiles DIRECTOR	1 0	X								
(4) Sue Autry Director	1 0	X								
(5) Camille Blakely VICE CHAIR	1 0	X		X						
(6) Larry Dewell MD Director	1 0	X								
(7) CHARLES EMMER DIRECTOR	1 0	X								
(8) STEVE EVERSON DIRECTOR	1 0	X								
(9) FLETCHER HOWARD SECRETARY	1 0	X		X						
(10) STACY LUTZ DAVIDSON TREASURER	1 0	X		X						
(11) JOHN MCCA DIRECTOR	1 0	X								
(12) Dr John Stevens DIRECTOR	1 0	X								
(13) DICK SULLIVAN CHAIR	1 0	X		X						
(14) GARY WHITLOCK DIRECTOR	1 0	X								
(15) DEBBIE COONTS DIRECTOR	1 0	X								
(16) VAL SIEVERS DIRECTOR	1 0	X								
(17) PETE VUJICICH DIRECTOR	1 0	X								

Part VII Section A. Officers, Directors, Trustees, Key Employees, and Highest Compensated Employees (continued)

(A) Name and Title	(B) Average hours per week (list any hours for related organizations below dotted line)	(C) Position (do not check more than one box, unless person is both an officer and a director/trustee)						(D) Reportable compensation from the organization (W- 2/1099-MISC)	(E) Reportable compensation from related organizations (W- 2/1099-MISC)	(F) Estimated amount of other compensation from the organization and related organizations
		Individual trustee or director	Institutional Trustee	Officer	Key employee	Highest compensated employee	Former			
(18) DENNY CRIPPS DIRECTOR	1 0	X								
(19) DEBBIE SAGAN DIRECTOR	1 0	X								
(20) VIC ANDREWS DIRECTOR	1 0	X								
(21) Morris Roth CEO	40 0 1 0			X			390,303	0	99,471	
(22) Paul Sexton DEPUTY CEO	40 0 1 0			X			220,640		9,900	
(23) Kelly Phillips-Henry COO - CLINICAL	40 0 1 0			X			211,821		7,873	
(24) KEVIN LIGHT CFO	40 0 1 0			X			189,925		14,530	
(25) FREDERICK MICHEL CMO	40 0 1 0			X			251,584		35,792	
(26) MARY ZESIEWICZ PSYCHIATRIST	40 0					X	266,493		14,679	
(27) ANDREW SEDILLO PSYCHIATRIST	40 0					X	205,489		32,200	
(28) MARTIN KRON PSYCHIATRIST	40 0					X	200,805		31,945	
(29) KEVIN SNYDER PSYCHIATRIST	40 0					X	192,393		17,351	
(30) NANCY CRANEY VP, HEALTH SERVICES	40 0					X	170,922		24,046	
1b Sub-Total										
c Total from continuation sheets to Part VII, Section A										
d Total (add lines 1b and 1c)							2,300,375	0	287,787	

2 Total number of individuals (including but not limited to those listed above) who received more than \$100,000 of reportable compensation from the organization **27**

	Yes	No
3 Did the organization list any former officer, director or trustee, key employee, or highest compensated employee on line 1a? <i>If "Yes," complete Schedule J for such individual</i>		No
4 For any individual listed on line 1a, is the sum of reportable compensation and other compensation from the organization and related organizations greater than \$150,000? <i>If "Yes," complete Schedule J for such individual</i>	Yes	
5 Did any person listed on line 1a receive or accrue compensation from any unrelated organization or individual for services rendered to the organization? <i>If "Yes," complete Schedule J for such person</i>		No

Section B. Independent Contractors

1 Complete this table for your five highest compensated independent contractors that received more than \$100,000 of compensation from the organization Report compensation for the calendar year ending with or within the organization's tax year

(A) Name and business address	(B) Description of services	(C) Compensation
BKD LLP , 111 S TEJON STEET STE 800 COLORADO SPRINGS CO 80903	ACCOUNTING SERVICES	113,500
BROWNSTEIN HYATT FARBER , 410 17TH STREET 2200 DENVER CO 80202	FUND DEVELOPMENT	153,773

2 Total number of independent contractors (including but not limited to those listed above) who received more than \$100,000 of compensation from the organization **2**

Part VIII Statement of Revenue

Check if Schedule O contains a response to any question in this Part VIII

			(A) Total revenue	(B) Related or exempt function revenue	(C) Unrelated business revenue	(D) Revenue excluded from tax under sections 512, 513, or 514	
Contributions, Gifts, Grants and Other Similar Amounts	1a	Federated campaigns 1a					
	b	Membership dues 1b					
	c	Fundraising events 1c	20,251				
	d	Related organizations 1d					
	e	Government grants (contributions) 1e					
	f	All other contributions, gifts, grants, and similar amounts not included above 1f	21,735				
	g	Noncash contributions included in lines 1a-1f \$					
	h	Total. Add lines 1a-1f	41,986				
Program Service Revenue			Business Code				
	2a	PATIENT SERVICE REVENUE	900099	26,796,737	26,796,737		
	b	MANAGING PARTNER OVERHEAD	900099	7,927,364	7,927,364		
	c	GAIN ON INVESTMENT IN EQUITY INVESTEE	900099	12,844	12,844		
	d						
	e						
	f	All other program service revenue					
g	Total. Add lines 2a-2f		34,736,945				
Other Revenue	3	Investment income (including dividends, interest, and other similar amounts)		2,520		2,520	
	4	Income from investment of tax-exempt bond proceeds		0			
	5	Royalties		0			
	6a	b	c	d	(i) Real	(ii) Personal	
					0	0	
					0	0	
	7a	b	c	d	(i) Securities	(ii) Other	
						1,697	
						1,697	
	8a	Gross income from fundraising events (not including \$ 20,251 of contributions reported on line 1c) See Part IV, line 18	a	53,016			
	b	Less direct expenses b		59,136			
	c	Net income or (loss) from fundraising events		-6,120			-6,120
	9a	b	c	d			
0							
10a	b	c	d				
				0			
Miscellaneous Revenue		Business Code					
11a	OTHER INCOME	900099	10,838	10,838			
b							
c							
d	All other revenue						
e	Total. Add lines 11a-11d		10,838				
12	Total revenue. See Instructions		34,787,866	34,747,783		-1,903	

Part IX Statement of Functional Expenses

Section 501(c)(3) and 501(c)(4) organizations must complete all columns. All other organizations must complete column (A)

Check if Schedule O contains a response to any question in this Part IX

Do not include amounts reported on lines 6b, 7b, 8b, 9b, and 10b of Part VIII.		(A) Total expenses	(B) Program service expenses	(C) Management and general expenses	(D) Fundraising expenses
1	Grants and other assistance to governments and organizations in the United States. See Part IV, line 21	100	100		
2	Grants and other assistance to individuals in the United States. See Part IV, line 22	0			
3	Grants and other assistance to governments, organizations, and individuals outside the United States. See Part IV, lines 15 and 16	0			
4	Benefits paid to or for members	0			
5	Compensation of current officers, directors, trustees, and key employees	1,050,243		1,050,243	
6	Compensation not included above, to disqualified persons (as defined under section 4958(f)(1)) and persons described in section 4958(c)(3)(B)	0			
7	Other salaries and wages	3,290,188		3,290,188	
8	Pension plan accruals and contributions (include section 401(k) and 403(b) employer contributions)	173,247		173,247	
9	Other employee benefits	1,005,279		1,005,279	
10	Payroll taxes	254,044		254,044	
11	Fees for services (non-employees)				
a	Management	0			
b	Legal	12,095		12,095	
c	Accounting	113,500		113,500	
d	Lobbying	7,500		7,500	
e	Professional fundraising services. See Part IV, line 17	16,640			16,640
f	Investment management fees	0			
g	Other (If line 11g amount exceeds 10% of line 25, column (A) amount, list line 11g expenses on Schedule O)	26,669,299	26,084,309	431,217	153,773
12	Advertising and promotion	72,772		72,772	
13	Office expenses	223,247		223,247	
14	Information technology	359,664		359,664	
15	Royalties	0			
16	Occupancy	463,653		463,653	
17	Travel	91,942		91,942	
18	Payments of travel or entertainment expenses for any federal, state, or local public officials	0			
19	Conferences, conventions, and meetings	112,325		112,325	
20	Interest	0			
21	Payments to affiliates	0			
22	Depreciation, depletion, and amortization	365,616		365,616	
23	Insurance	93,011		93,011	
24	Other expenses. Itemize expenses not covered above (List miscellaneous expenses in line 24e. If line 24e amount exceeds 10% of line 25, column (A) amount, list line 24e expenses on Schedule O)				
a	MISCELLANEOUS EXPENSES	500		500	
b					
c					
d					
e	All other expenses				
25	Total functional expenses. Add lines 1 through 24e	34,374,865	26,084,409	8,120,043	170,413
26	Joint costs. Complete this line only if the organization reported in column (B) joint costs from a combined educational campaign and fundraising solicitation. Check here <input type="checkbox"/> if following SOP 98-2 (ASC 958-720)				

Part X Balance Sheet

Check if Schedule O contains a response to any question in this Part X

		(A)		(B)
		Beginning of year		End of year
Assets	1 Cash—non-interest-bearing	9,719,400	1	11,444,464
	2 Savings and temporary cash investments	253,814	2	254,009
	3 Pledges and grants receivable, net	0	3	0
	4 Accounts receivable, net	657,139	4	570,087
	5 Loans and other receivables from current and former officers, directors, trustees, key employees, and highest compensated employees Complete Part II of Schedule L	0	5	0
	6 Loans and other receivables from other disqualified persons (as defined under section 4958(f)(1)), persons described in section 4958(c)(3)(B), and contributing employers and sponsoring organizations of section 501(c)(9) voluntary employees' beneficiary organizations (see instructions) Complete Part II of Schedule L	0	6	0
	7 Notes and loans receivable, net	0	7	0
	8 Inventories for sale or use	18,194	8	29,885
	9 Prepaid expenses and deferred charges	685,191	9	858,913
	10a Land, buildings, and equipment cost or other basis Complete Part VI of Schedule D	10a 3,871,874		
	b Less accumulated depreciation	10b 3,011,954	1,211,896	10c 859,920
	11 Investments—publicly traded securities	981,638	11	1,090,291
	12 Investments—other securities See Part IV, line 11	0	12	0
	13 Investments—program-related See Part IV, line 11	5,319,966	13	5,758,346
	14 Intangible assets	0	14	0
	15 Other assets See Part IV, line 11	16,554	15	16,554
16 Total assets. Add lines 1 through 15 (must equal line 34)	18,863,792	16	20,882,469	
Liabilities	17 Accounts payable and accrued expenses	2,545,274	17	4,134,301
	18 Grants payable	0	18	0
	19 Deferred revenue	967,453	19	728,015
	20 Tax-exempt bond liabilities	0	20	0
	21 Escrow or custodial account liability Complete Part IV of Schedule D	0	21	0
	22 Loans and other payables to current and former officers, directors, trustees, key employees, highest compensated employees, and disqualified persons Complete Part II of Schedule L	0	22	0
	23 Secured mortgages and notes payable to unrelated third parties	0	23	0
	24 Unsecured notes and loans payable to unrelated third parties	0	24	0
	25 Other liabilities (including federal income tax, payables to related third parties, and other liabilities not included on lines 17-24) Complete Part X of Schedule D	0	25	0
	26 Total liabilities. Add lines 17 through 25	3,512,727	26	4,862,316
Net Assets or Fund Balances	Organizations that follow SFAS 117 (ASC 958), check here <input checked="" type="checkbox"/> and complete lines 27 through 29, and lines 33 and 34.			
	27 Unrestricted net assets	15,351,065	27	16,020,153
	28 Temporarily restricted net assets	0	28	0
	29 Permanently restricted net assets	0	29	0
	Organizations that do not follow SFAS 117 (ASC 958), check here <input type="checkbox"/> and complete lines 30 through 34.			
	30 Capital stock or trust principal, or current funds		30	
	31 Paid-in or capital surplus, or land, building or equipment fund		31	
	32 Retained earnings, endowment, accumulated income, or other funds		32	
33 Total net assets or fund balances	15,351,065	33	16,020,153	
34 Total liabilities and net assets/fund balances	18,863,792	34	20,882,469	

Part XI Reconciliation of Net Assets

Check if Schedule O contains a response to any question in this Part XI

1	Total revenue (must equal Part VIII, column (A), line 12)	1	34,787,866
2	Total expenses (must equal Part IX, column (A), line 25)	2	34,374,865
3	Revenue less expenses Subtract line 2 from line 1	3	413,001
4	Net assets or fund balances at beginning of year (must equal Part X, line 33, column (A))	4	15,351,065
5	Net unrealized gains (losses) on investments	5	3,212
6	Donated services and use of facilities	6	
7	Investment expenses	7	
8	Prior period adjustments	8	
9	Other changes in net assets or fund balances (explain in Schedule O)	9	252,875
10	Net assets or fund balances at end of year Combine lines 3 through 9 (must equal Part X, line 33, column (B))	10	16,020,153

Part XII Financial Statements and Reporting

Check if Schedule O contains a response to any question in this Part XII

	Yes	No
1 Accounting method used to prepare the Form 990 <input type="checkbox"/> Cash <input checked="" type="checkbox"/> Accrual <input type="checkbox"/> Other _____ If the organization changed its method of accounting from a prior year or checked "Other," explain in Schedule O		
2a Were the organization's financial statements compiled or reviewed by an independent accountant? If "Yes," check a box below to indicate whether the financial statements for the year were compiled or reviewed on a separate basis, consolidated basis, or both <input type="checkbox"/> Separate basis <input type="checkbox"/> Consolidated basis <input type="checkbox"/> Both consolidated and separate basis		No
2b Were the organization's financial statements audited by an independent accountant? If "Yes," check a box below to indicate whether the financial statements for the year were audited on a separate basis, consolidated basis, or both <input type="checkbox"/> Separate basis <input checked="" type="checkbox"/> Consolidated basis <input type="checkbox"/> Both consolidated and separate basis	Yes	
2c If "Yes," to line 2a or 2b, does the organization have a committee that assumes responsibility for oversight of the audit, review, or compilation of its financial statements and selection of an independent accountant? If the organization changed either its oversight process or selection process during the tax year, explain in Schedule O	Yes	
3a As a result of a federal award, was the organization required to undergo an audit or audits as set forth in the Single Audit Act and OMB Circular A-133?		No
3b If "Yes," did the organization undergo the required audit or audits? If the organization did not undergo the required audit or audits, explain why in Schedule O and describe any steps taken to undergo such audits		

Additional Data

Software ID:
Software Version:
EIN: 42-1600485
Name: Aspenpointe Inc

Form 990, Part VII - Compensation of Officers, Directors, Trustees, Key Employees, Highest Compensated Employees, and Independent Contractors

(A) Name and Title	(B) Average hours per week (list any hours for related organizations below dotted line)	(C) Position (do not check more than one box, unless person is both an officer and a director/trustee)						(D) Reportable compensation from the organization (W-2/1099-MISC)	(E) Reportable compensation from related organizations (W-2/1099-MISC)	(F) Estimated amount of other compensation from the organization and related organizations
		Individual trustee or director	Institutional Trustee	Officer	Key employee	Highest compensated employee	Former			
CAROLENA STEEN PHD DIRECTOR	1 0	X								
DR BILL CROUCH IMMEDIATE PAST CHAIR	1 0	X		X						
Cathy Skiles DIRECTOR	1 0	X								
Sue Autry Director	1 0	X								
Camille Blakely VICE CHAIR	1 0 1 0	X		X						
Larry Dewell MD Director	1 0	X								
CHARLES EMMER DIRECTOR	1 0	X								
STEVE EVERSON DIRECTOR	1 0	X								
FLETCHER HOWARD SECRETARY	1 0	X		X						
STACY LUTZ DAVIDSON TREASURER	1 0	X		X						
JOHN MCCA DIRECTOR	1 0	X								
Dr John Stevens DIRECTOR	1 0	X								
DICK SULLIVAN CHAIR	1 0	X		X						
GARY WHITLOCK DIRECTOR	1 0	X								
DEBBIE COONTS DIRECTOR	1 0 1 0	X								
VAL SIEVERS DIRECTOR	1 0	X								
PETE VUJICICH DIRECTOR	1 0	X								
DENNY CRIPPS DIRECTOR	1 0	X								
DEBBIE SAGAN DIRECTOR	1 0	X								
VIC ANDREWS DIRECTOR	1 0	X								
Morris Roth CEO	40 0 1 0			X			390,303	0	99,471	
Paul Sexton DEPUTY CEO	40 0 1 0			X			220,640		9,900	
Kelly Phillips-Henry COO - CLINICAL	40 0 1 0			X			211,821		7,873	
KEVIN LIGHT CFO	40 0 1 0			X			189,925		14,530	
FREDERICK MICHEL CMO	40 0 1 0			X			251,584		35,792	

Form 990, Part VII - Compensation of Officers, Directors, Trustees, Key Employees, Highest Compensated Employees, and Independent Contractors

(A) Name and Title	(B) Average hours per week (list any hours for related organizations below dotted line)	(C) Position (do not check more than one box, unless person is both an officer and a director/trustee)						(D) Reportable compensation from the organization (W-2/1099-MISC)	(E) Reportable compensation from related organizations (W-2/1099-MISC)	(F) Estimated amount of other compensation from the organization and related organizations
		Individual trustee or director	Institutional Trustee	Officer	Key employee	Highest compensated employee	Former			
MARY ZESIEWICZ PSYCHIATRIST	40 0					X		266,493	14,679	
ANDREW SEDILLO PSYCHIATRIST	40 0					X		205,489	32,200	
MARTIN KRON PSYCHIATRIST	40 0					X		200,805	31,945	
KEVIN SNYDER PSYCHIATRIST	40 0					X		192,393	17,351	
NANCY CRANEY VP, HEALTH SERVICES	40 0					X		170,922	24,046	

SCHEDULE A
(Form 990 or 990EZ)

Public Charity Status and Public Support

OMB No 1545-0047

2012

Open to Public Inspection

Complete if the organization is a section 501(c)(3) organization or a section 4947(a)(1) nonexempt charitable trust.

▶ Attach to Form 990 or Form 990-EZ. ▶ See separate instructions.

Name of the organization
Aspenpointe Inc

Employer identification number
42-1600485

Part I Reason for Public Charity Status (All organizations must complete this part.) See instructions.

The organization is not a private foundation because it is (For lines 1 through 11, check only one box)

- 1 A church, convention of churches, or association of churches described in **section 170(b)(1)(A)(i)**.
- 2 A school described in **section 170(b)(1)(A)(ii)**. (Attach Schedule E)
- 3 A hospital or a cooperative hospital service organization described in **section 170(b)(1)(A)(iii)**.
- 4 A medical research organization operated in conjunction with a hospital described in **section 170(b)(1)(A)(iii)**. Enter the hospital's name, city, and state _____
- 5 An organization operated for the benefit of a college or university owned or operated by a governmental unit described in **section 170(b)(1)(A)(iv)**. (Complete Part II)
- 6 A federal, state, or local government or governmental unit described in **section 170(b)(1)(A)(v)**.
- 7 An organization that normally receives a substantial part of its support from a governmental unit or from the general public described in **section 170(b)(1)(A)(vi)**. (Complete Part II)
- 8 A community trust described in **section 170(b)(1)(A)(vi)** (Complete Part II)
- 9 An organization that normally receives (1) more than 33 1/3% of its support from contributions, membership fees, and gross receipts from activities related to its exempt functions—subject to certain exceptions, and (2) no more than 33 1/3% of its support from gross investment income and unrelated business taxable income (less section 511 tax) from businesses acquired by the organization after June 30, 1975 See **section 509(a)(2)**. (Complete Part III)
- 10 An organization organized and operated exclusively to test for public safety See **section 509(a)(4)**.
- 11 An organization organized and operated exclusively for the benefit of, to perform the functions of, or to carry out the purposes of one or more publicly supported organizations described in section 509(a)(1) or section 509(a)(2) See **section 509(a)(3)**. Check the box that describes the type of supporting organization and complete lines 11e through 11h
 a Type I b Type II c Type III - Functionally integrated d Type III - Non-functionally integrated
- e By checking this box, I certify that the organization is not controlled directly or indirectly by one or more disqualified persons other than foundation managers and other than one or more publicly supported organizations described in section 509(a)(1) or section 509(a)(2)
- f If the organization received a written determination from the IRS that it is a Type I, Type II, or Type III supporting organization, check this box
- g Since August 17, 2006, has the organization accepted any gift or contribution from any of the following persons?
 (i) A person who directly or indirectly controls, either alone or together with persons described in (ii) and (iii) below, the governing body of the supported organization?
 (ii) A family member of a person described in (i) above?
 (iii) A 35% controlled entity of a person described in (i) or (ii) above?
- h Provide the following information about the supported organization(s)

	Yes	No
11g(i)		
11g(ii)		
11g(iii)		

(i) Name of supported organization	(ii) EIN	(iii) Type of organization (described on lines 1- 9 above or IRC section (see instructions))	(iv) Is the organization in col (i) listed in your governing document?		(v) Did you notify the organization in col (i) of your support?		(vi) Is the organization in col (i) organized in the U S ?		(vii) Amount of monetary support
			Yes	No	Yes	No	Yes	No	
Total									

Part II Support Schedule for Organizations Described in Sections 170(b)(1)(A)(iv) and 170(b)(1)(A)(vi)

(Complete only if you checked the box on line 5, 7, or 8 of Part I or if the organization failed to qualify under Part III. If the organization fails to qualify under the tests listed below, please complete Part III.)

Section A. Public Support

Calendar year (or fiscal year beginning in) ▶	(a) 2008	(b) 2009	(c) 2010	(d) 2011	(e) 2012	(f) Total
1 Gifts, grants, contributions, and membership fees received (Do not include any "unusual grants.")						
2 Tax revenues levied for the organization's benefit and either paid to or expended on its behalf						
3 The value of services or facilities furnished by a governmental unit to the organization without charge						
4 Total. Add lines 1 through 3						
5 The portion of total contributions by each person (other than a governmental unit or publicly supported organization) included on line 1 that exceeds 2% of the amount shown on line 11, column (f)						
6 Public support. Subtract line 5 from line 4						

Section B. Total Support

Calendar year (or fiscal year beginning in) ▶	(a) 2008	(b) 2009	(c) 2010	(d) 2011	(e) 2012	(f) Total
7 Amounts from line 4						
8 Gross income from interest, dividends, payments received on securities loans, rents, royalties and income from similar sources						
9 Net income from unrelated business activities, whether or not the business is regularly carried on						
10 Other income Do not include gain or loss from the sale of capital assets (Explain in Part IV)						
11 Total support (Add lines 7 through 10)						
12 Gross receipts from related activities, etc (see instructions)					12	
13 First five years. If the Form 990 is for the organization's first, second, third, fourth, or fifth tax year as a 501(c)(3) organization, check this box and stop here ▶						

Section C. Computation of Public Support Percentage

14 Public support percentage for 2012 (line 6, column (f) divided by line 11, column (f))	14	
15 Public support percentage for 2011 Schedule A, Part II, line 14	15	
16a 33 1/3% support test—2012. If the organization did not check the box on line 13, and line 14 is 33 1/3% or more, check this box and stop here. The organization qualifies as a publicly supported organization ▶		
b 33 1/3% support test—2011. If the organization did not check a box on line 13 or 16a, and line 15 is 33 1/3% or more, check this box and stop here. The organization qualifies as a publicly supported organization ▶		
17a 10%-facts-and-circumstances test—2012. If the organization did not check a box on line 13, 16a, or 16b, and line 14 is 10% or more, and if the organization meets the "facts-and-circumstances" test, check this box and stop here. Explain in Part IV how the organization meets the "facts-and-circumstances" test The organization qualifies as a publicly supported organization ▶		
b 10%-facts-and-circumstances test—2011. If the organization did not check a box on line 13, 16a, 16b, or 17a, and line 15 is 10% or more, and if the organization meets the "facts-and-circumstances" test, check this box and stop here. Explain in Part IV how the organization meets the "facts-and-circumstances" test The organization qualifies as a publicly supported organization ▶		
18 Private foundation. If the organization did not check a box on line 13, 16a, 16b, 17a, or 17b, check this box and see instructions ▶		

Part III Support Schedule for Organizations Described in Section 509(a)(2)

(Complete only if you checked the box on line 9 of Part I or if the organization failed to qualify under Part II. If the organization fails to qualify under the tests listed below, please complete Part II.)

Section A. Public Support

Calendar year (or fiscal year beginning in) ▶	(a) 2008	(b) 2009	(c) 2010	(d) 2011	(e) 2012	(f) Total
1 Gifts, grants, contributions, and membership fees received (Do not include any "unusual grants.")	60,186	22,435	34,336	17,860	41,986	176,803
2 Gross receipts from admissions, merchandise sold or services performed, or facilities furnished in any activity that is related to the organization's tax-exempt purpose	27,193,806	27,702,561	30,430,958	33,219,812	34,747,783	153,294,920
3 Gross receipts from activities that are not an unrelated trade or business under section 513		37,310	52,968	66,186	53,016	209,480
4 Tax revenues levied for the organization's benefit and either paid to or expended on its behalf						0
5 The value of services or facilities furnished by a governmental unit to the organization without charge						0
6 Total. Add lines 1 through 5	27,253,992	27,762,306	30,518,262	33,303,858	34,842,785	153,681,203
7a Amounts included on lines 1, 2, and 3 received from disqualified persons						0
b Amounts included on lines 2 and 3 received from other than disqualified persons that exceed the greater of \$5,000 or 1% of the amount on line 13 for the year	5,165,574	5,064,031	5,284,250	6,091,214	6,198,094	27,803,163
c Add lines 7a and 7b	5,165,574	5,064,031	5,284,250	6,091,214	6,198,094	27,803,163
8 Public support (Subtract line 7c from line 6)						125,878,040

Section B. Total Support

Calendar year (or fiscal year beginning in) ▶	(a) 2008	(b) 2009	(c) 2010	(d) 2011	(e) 2012	(f) Total
9 Amounts from line 6	27,253,992	27,762,306	30,518,262	33,303,858	34,842,785	153,681,203
10a Gross income from interest, dividends, payments received on securities loans, rents, royalties and income from similar sources	28,648	16,859	6,892	832	2,520	55,751
b Unrelated business taxable income (less section 511 taxes) from businesses acquired after June 30, 1975						0
c Add lines 10a and 10b	28,648	16,859	6,892	832	2,520	55,751
11 Net income from unrelated business activities not included in line 10b, whether or not the business is regularly carried on						0
12 Other income. Do not include gain or loss from the sale of capital assets (Explain in Part IV)						0
13 Total support. (Add lines 9, 10c, 11, and 12)	27,282,640	27,779,165	30,525,154	33,304,690	34,845,305	153,736,954
14 First five years. If the Form 990 is for the organization's first, second, third, fourth, or fifth tax year as a 501(c)(3) organization, check this box and stop here <input type="checkbox"/>						

Section C. Computation of Public Support Percentage

15 Public support percentage for 2012 (line 8, column (f) divided by line 13, column (f))	15	81.879 %
16 Public support percentage from 2011 Schedule A, Part III, line 15	16	80.870 %

Section D. Computation of Investment Income Percentage

17 Investment income percentage for 2012 (line 10c, column (f) divided by line 13, column (f))	17	0.036 %
18 Investment income percentage from 2011 Schedule A, Part III, line 17	18	1.510 %

- 19a 33 1/3% support tests—2012.** If the organization did not check the box on line 14, and line 15 is more than 33 1/3%, and line 17 is not more than 33 1/3%, check this box and **stop here**. The organization qualifies as a publicly supported organization
- b 33 1/3% support tests—2011.** If the organization did not check a box on line 14 or line 19a, and line 16 is more than 33 1/3% and line 18 is not more than 33 1/3%, check this box and **stop here**. The organization qualifies as a publicly supported organization
- 20 Private foundation.** If the organization did not check a box on line 14, 19a, or 19b, check this box and see instructions

Part IV **Supplemental Information.** Complete this part to provide the explanations required by Part II, line 10; Part II, line 17a or 17b; and Part III, line 12. Also complete this part for any additional information. (See instructions).

Facts And Circumstances Test

Explanation

SCHEDULE C (Form 990 or 990-EZ)

Political Campaign and Lobbying Activities

OMB No 1545-0047

2012

Open to Public Inspection

Department of the Treasury Internal Revenue Service

For Organizations Exempt From Income Tax Under section 501(c) and section 527
- Complete if the organization is described below. - Attach to Form 990 or Form 990-EZ.
- See separate instructions.

If the organization answered "Yes" to Form 990, Part IV, Line 3, or Form 990-EZ, Part V, line 46 (Political Campaign Activities), then

- Section 501(c)(3) organizations Complete Parts I-A and B Do not complete Part I-C
Section 501(c) (other than section 501(c)(3)) organizations Complete Parts I-A and C below Do not complete Part I-B
Section 527 organizations Complete Part I-A only

If the organization answered "Yes" to Form 990, Part IV, Line 4, or Form 990-EZ, Part VI, line 47 (Lobbying Activities), then

- Section 501(c)(3) organizations that have filed Form 5768 (election under section 501(h)) Complete Part II-A Do not complete Part II-B
Section 501(c)(3) organizations that have NOT filed Form 5768 (election under section 501(h)) Complete Part II-B Do not complete Part II-A

If the organization answered "Yes" to Form 990, Part IV, Line 5 (Proxy Tax) or Form 990-EZ, Part V, line 35c (Proxy Tax), then

- Section 501(c)(4), (5), or (6) organizations Complete Part III

Table with 2 columns: Name of the organization (Aspenpointe Inc) and Employer identification number (42-1600485)

Part I-A Complete if the organization is exempt under section 501(c) or is a section 527 organization.

- 1 Provide a description of the organization's direct and indirect political campaign activities in Part IV
2 Political expenditures \$
3 Volunteer hours

Part I-B Complete if the organization is exempt under section 501(c)(3).

- 1 Enter the amount of any excise tax incurred by the organization under section 4955 \$
2 Enter the amount of any excise tax incurred by organization managers under section 4955 \$
3 If the organization incurred a section 4955 tax, did it file Form 4720 for this year? Yes No
4a Was a correction made? Yes No
b If "Yes," describe in Part IV

Part I-C Complete if the organization is exempt under section 501(c), except section 501(c)(3).

- 1 Enter the amount directly expended by the filing organization for section 527 exempt function activities \$
2 Enter the amount of the filing organization's funds contributed to other organizations for section 527 exempt function activities \$
3 Total exempt function expenditures Add lines 1 and 2 Enter here and on Form 1120-POL, line 17b \$
4 Did the filing organization file Form 1120-POL for this year? Yes No
5 Enter the names, addresses and employer identification number (EIN) of all section 527 political organizations to which the filing organization made payments

Table with 5 columns: (a) Name, (b) Address, (c) EIN, (d) Amount paid from filing organization's funds, (e) Amount of political contributions received and promptly and directly delivered to a separate political organization

Part II-A Complete if the organization is exempt under section 501(c)(3) and filed Form 5768 (election under section 501(h)).

- A** Check if the filing organization belongs to an affiliated group (and list in Part IV each affiliated group member's name, address, EIN, expenses, and share of excess lobbying expenditures)
- B** Check if the filing organization checked box A and "limited control" provisions apply

Limits on Lobbying Expenditures (The term "expenditures" means amounts paid or incurred.)	(a) Filing organization's totals	(b) Affiliated group totals												
1a Total lobbying expenditures to influence public opinion (grass roots lobbying)														
b Total lobbying expenditures to influence a legislative body (direct lobbying)														
c Total lobbying expenditures (add lines 1a and 1b)														
d Other exempt purpose expenditures														
e Total exempt purpose expenditures (add lines 1c and 1d)														
f Lobbying nontaxable amount Enter the amount from the following table in both columns														
<table border="1" style="width: 100%; border-collapse: collapse;"> <thead> <tr> <th style="width: 35%;">If the amount on line 1e, column (a) or (b) is:</th> <th style="width: 65%;">The lobbying nontaxable amount is:</th> </tr> </thead> <tbody> <tr> <td>Not over \$500,000</td> <td>20% of the amount on line 1e</td> </tr> <tr> <td>Over \$500,000 but not over \$1,000,000</td> <td>\$100,000 plus 15% of the excess over \$500,000</td> </tr> <tr> <td>Over \$1,000,000 but not over \$1,500,000</td> <td>\$175,000 plus 10% of the excess over \$1,000,000</td> </tr> <tr> <td>Over \$1,500,000 but not over \$17,000,000</td> <td>\$225,000 plus 5% of the excess over \$1,500,000</td> </tr> <tr> <td>Over \$17,000,000</td> <td>\$1,000,000</td> </tr> </tbody> </table>	If the amount on line 1e, column (a) or (b) is:	The lobbying nontaxable amount is:	Not over \$500,000	20% of the amount on line 1e	Over \$500,000 but not over \$1,000,000	\$100,000 plus 15% of the excess over \$500,000	Over \$1,000,000 but not over \$1,500,000	\$175,000 plus 10% of the excess over \$1,000,000	Over \$1,500,000 but not over \$17,000,000	\$225,000 plus 5% of the excess over \$1,500,000	Over \$17,000,000	\$1,000,000		
If the amount on line 1e, column (a) or (b) is:	The lobbying nontaxable amount is:													
Not over \$500,000	20% of the amount on line 1e													
Over \$500,000 but not over \$1,000,000	\$100,000 plus 15% of the excess over \$500,000													
Over \$1,000,000 but not over \$1,500,000	\$175,000 plus 10% of the excess over \$1,000,000													
Over \$1,500,000 but not over \$17,000,000	\$225,000 plus 5% of the excess over \$1,500,000													
Over \$17,000,000	\$1,000,000													
g Grassroots nontaxable amount (enter 25% of line 1f)														
h Subtract line 1g from line 1a If zero or less, enter -0-														
i Subtract line 1f from line 1c If zero or less, enter -0-														
j If there is an amount other than zero on either line 1h or line 1i, did the organization file Form 4720 reporting section 4911 tax for this year?		<input type="checkbox"/> Yes <input type="checkbox"/> No												

4-Year Averaging Period Under Section 501(h)
(Some organizations that made a section 501(h) election do not have to complete all of the five columns below. See the instructions for lines 2a through 2f on page 4.)

Lobbying Expenditures During 4-Year Averaging Period					
Calendar year (or fiscal year beginning in)	(a) 2009	(b) 2010	(c) 2011	(d) 2012	(e) Total
2a Lobbying nontaxable amount					
b Lobbying ceiling amount (150% of line 2a, column(e))					
c Total lobbying expenditures					
d Grassroots nontaxable amount					
e Grassroots ceiling amount (150% of line 2d, column (e))					
f Grassroots lobbying expenditures					

Part II-B Complete if the organization is exempt under section 501(c)(3) and has NOT filed Form 5768 (election under section 501(h)).

For each "Yes" response to lines 1a through 1i below, provide in Part IV a detailed description of the lobbying activity.

	(a)		(b)
	Yes	No	Amount
1 During the year, did the filing organization attempt to influence foreign, national, state or local legislation, including any attempt to influence public opinion on a legislative matter or referendum, through the use of			
a Volunteers?		No	
b Paid staff or management (include compensation in expenses reported on lines 1c through 1i)?		No	
c Media advertisements?		No	
d Mailings to members, legislators, or the public?		No	
e Publications, or published or broadcast statements?		No	
f Grants to other organizations for lobbying purposes?		No	
g Direct contact with legislators, their staffs, government officials, or a legislative body?	Yes		7,500
h Rallies, demonstrations, seminars, conventions, speeches, lectures, or any similar means?		No	
i Other activities?		No	
j Total Add lines 1c through 1i			7,500
2a Did the activities in line 1 cause the organization to be not described in section 501(c)(3)?		No	
b If "Yes," enter the amount of any tax incurred under section 4912			
c If "Yes," enter the amount of any tax incurred by organization managers under section 4912			
d If the filing organization incurred a section 4912 tax, did it file Form 4720 for this year?			

Part III-A Complete if the organization is exempt under section 501(c)(4), section 501(c)(5), or section 501(c)(6).

	Yes	No
1 Were substantially all (90% or more) dues received nondeductible by members?	1	
2 Did the organization make only in-house lobbying expenditures of \$2,000 or less?	2	
3 Did the organization agree to carry over lobbying and political expenditures from the prior year?	3	

Part III-B Complete if the organization is exempt under section 501(c)(4), section 501(c)(5), or section 501(c)(6) and if either (a) BOTH Part III-A, lines 1 and 2, are answered "No" OR (b) Part III-A, line 3, is answered "Yes."

1 Dues, assessments and similar amounts from members	1	
2 Section 162(e) nondeductible lobbying and political expenditures (do not include amounts of political expenses for which the section 527(f) tax was paid).		
a Current year	2a	
b Carryover from last year	2b	
c Total	2c	
3 Aggregate amount reported in section 6033(e)(1)(A) notices of nondeductible section 162(e) dues	3	
4 If notices were sent and the amount on line 2c exceeds the amount on line 3, what portion of the excess does the organization agree to carryover to the reasonable estimate of nondeductible lobbying and political expenditure next year?	4	
5 Taxable amount of lobbying and political expenditures (see instructions)	5	

Part IV Supplemental Information

Complete this part to provide the descriptions required for Part I-A, line 1, Part I-B, line 4, Part I-C, line 5, Part II-A (affiliated group list), Part II-A, line 2, and Part II-B, line 1. Also, complete this part for any additional information.

Identifier	Return Reference	Explanation
Lobby Expenditures	Schedule C, Part II-B, Line 1G	ASPENPOINTE PAYS A LOBBYIST TO MONITOR PENDING LEGISLATION AND TO SCHEDULE MEETINGS WITH POLITICIANS FOR ASPENPOINTE TO PRESENT THEIR VIEW AND TO ADVISE ASPENPOINTE AS NEEDED THE AMOUNT LISTED ABOVE IS ASPENPOINTE'S PORTION OF THE TOTAL LOBBYING FEES PAID TO THE LOBBYIST THE REMAINING PORTION OF THE FEES PAID TO THE LOBBYIST IS DISCLOSED ON ITS GROUP RETURN

SCHEDULE D (Form 990)

OMB No 1545-0047

Supplemental Financial Statements

2012

Open to Public Inspection

Complete if the organization answered "Yes," to Form 990, Part IV, line 6, 7, 8, 9, 10, 11a, 11b, 11c, 11d, 11e, 11f, 12a, or 12b. Attach to Form 990. See separate instructions.

Department of the Treasury Internal Revenue Service

Name of the organization Aspenpointe Inc

Employer identification number 42-1600485

Part I Organizations Maintaining Donor Advised Funds or Other Similar Funds or Accounts. Complete if the organization answered "Yes" to Form 990, Part IV, line 6.

Table with 3 columns: (a) Donor advised funds, (b) Funds and other accounts, and a Yes/No column. Rows include total number at end of year, aggregate contributions, aggregate grants, aggregate value, and questions about donor advisement and grant purposes.

Part II Conservation Easements. Complete if the organization answered "Yes" to Form 990, Part IV, line 7.

Table with 3 columns: Description, Held at the End of the Year (2a-2d), and Yes/No. Rows include purpose of easements, number of easements, and monitoring details.

Part III Organizations Maintaining Collections of Art, Historical Treasures, or Other Similar Assets. Complete if the organization answered "Yes" to Form 990, Part IV, line 8.

Table with 3 columns: Description, Revenues, and Assets. Rows include questions about reporting art and historical treasures.

Part III Organizations Maintaining Collections of Art, Historical Treasures, or Other Similar Assets *(continued)*

3 Using the organization's acquisition, accession, and other records, check any of the following that are a significant use of its collection items (check all that apply)

- a** Public exhibition
- b** Scholarly research
- c** Preservation for future generations
- d** Loan or exchange programs
- e** Other

4 Provide a description of the organization's collections and explain how they further the organization's exempt purpose in Part XIII

5 During the year, did the organization solicit or receive donations of art, historical treasures or other similar assets to be sold to raise funds rather than to be maintained as part of the organization's collection? Yes No

Part IV Escrow and Custodial Arrangements. Complete if the organization answered "Yes" to Form 990, Part IV, line 9, or reported an amount on Form 990, Part X, line 21.

1a Is the organization an agent, trustee, custodian or other intermediary for contributions or other assets not included on Form 990, Part X? Yes No

b If "Yes," explain the arrangement in Part XIII and complete the following table

	Amount
1c	
1d	
1e	
1f	

2a Did the organization include an amount on Form 990, Part X, line 21? Yes No

b If "Yes," explain the arrangement in Part XIII. Check here if the explanation has been provided in Part XIII

Part V Endowment Funds. Complete if the organization answered "Yes" to Form 990, Part IV, line 10.

	(a) Current year	(b) Prior year	(c) Two years back	(d) Three years back	(e) Four years back
1a Beginning of year balance					
b Contributions					
c Net investment earnings, gains, and losses					
d Grants or scholarships					
e Other expenditures for facilities and programs					
f Administrative expenses					
g End of year balance					

2 Provide the estimated percentage of the current year end balance (line 1g, column (a)) held as

- a** Board designated or quasi-endowment ▶
 - b** Permanent endowment ▶
 - c** Temporarily restricted endowment ▶
- The percentages in lines 2a, 2b, and 2c should equal 100%

3a Are there endowment funds not in the possession of the organization that are held and administered for the organization by

	Yes	No
(i) unrelated organizations	3a(i)	
(ii) related organizations	3a(ii)	
b If "Yes" to 3a(ii), are the related organizations listed as required on Schedule R?	3b	

4 Describe in Part XIII the intended uses of the organization's endowment funds

Part VI Land, Buildings, and Equipment. See Form 990, Part X, line 10.

Description of property	(a) Cost or other basis (investment)	(b) Cost or other basis (other)	(c) Accumulated depreciation	(d) Book value
1a Land				
b Buildings				
c Leasehold improvements		939,616	628,414	311,202
d Equipment		2,118,859	1,805,002	313,857
e Other		813,399	578,538	234,861
Total. Add lines 1a through 1e (Column (d) must equal Form 990, Part X, column (B), line 10(c).)				859,920

Part XI Reconciliation of Revenue per Audited Financial Statements With Revenue per Return

1	Total revenue, gains, and other support per audited financial statements	1	35,103,089
2	Amounts included on line 1 but not on Form 990, Part VIII, line 12		
a	Net unrealized gains on investments	2a	3,212
b	Donated services and use of facilities	2b	
c	Recoveries of prior year grants	2c	
d	Other (Describe in Part XIII)	2d	312,011
e	Add lines 2a through 2d	2e	315,223
3	Subtract line 2e from line 1	3	34,787,866
4	Amounts included on Form 990, Part VIII, line 12, but not on line 1		
a	Investment expenses not included on Form 990, Part VIII, line 7b	4a	
b	Other (Describe in Part XIII)	4b	
c	Add lines 4a and 4b	4c	
5	Total revenue Add lines 3 and 4c . (This must equal Form 990, Part I, line 12)	5	34,787,866

Part XII Reconciliation of Expenses per Audited Financial Statements With Expenses per Return

1	Total expenses and losses per audited financial statements	1	34,434,001
2	Amounts included on line 1 but not on Form 990, Part IX, line 25		
a	Donated services and use of facilities	2a	
b	Prior year adjustments	2b	
c	Other losses	2c	
d	Other (Describe in Part XIII)	2d	59,136
e	Add lines 2a through 2d	2e	59,136
3	Subtract line 2e from line 1	3	34,374,865
4	Amounts included on Form 990, Part IX, line 25, but not on line 1 :		
a	Investment expenses not included on Form 990, Part VIII, line 7b	4a	
b	Other (Describe in Part XIII)	4b	
c	Add lines 4a and 4b	4c	
5	Total expenses Add lines 3 and 4c . (This must equal Form 990, Part I, line 18)	5	34,374,865

Part XIII Supplemental Information

Complete this part to provide the descriptions required for Part II, lines 3, 5, and 9, Part III, lines 1a and 4, Part IV, lines 1b and 2b, Part V, line 4, Part X, line 2, Part XI, lines 2d and 4b, and Part XII, lines 2d and 4b. Also complete this part to provide any additional information.

Identifier	Return Reference	Explanation
Part XI, Line 2d	Other Revenue on Books, Not on Return	CHANGE IN THE INTEREST OF ASPENPOINTE FOUNDATION 252,875 SPECIAL EVENT EXPENSES NETTED AGAINST INCOME 59,136
PART XII, LINE 2D	OTHER EXPENSE ON BOOKS, NOT ON RETURN	SPECIAL EVENT EXPENSES NETTED AGAINST INCOME 59,136

SCHEDULE G (Form 990 or 990-EZ)

Supplemental Information Regarding Fundraising or Gaming Activities

OMB No 1545-0047

2012

Open to Public Inspection

Complete if the organization answered "Yes" to Form 990, Part IV, lines 17, 18, or 19, or if the organization entered more than \$15,000 on Form 990-EZ, line 6a. Form 990-EZ filers are not required to complete this part.

Attach to Form 990 or Form 990-EZ. See separate instructions.

Department of the Treasury Internal Revenue Service

Name of the organization Aspenpointe Inc

Employer identification number

42-1600485

Part I Fundraising Activities. Complete if the organization answered "Yes" to Form 990, Part IV, line 17.

1 Indicate whether the organization raised funds through any of the following activities. Check all that apply.

- a Mail solicitations
b Internet and email solicitations
c Phone solicitations
d In-person solicitations
e Solicitation of non-government grants
f Solicitation of government grants
g Special fundraising events

2a Did the organization have a written or oral agreement with any individual... Yes No

b If "Yes," list the ten highest paid individuals or entities (fundraisers) pursuant to agreements...

Table with 6 columns: (i) Name and address of individual or entity (fundraiser), (ii) Activity, (iii) Did fundraiser have custody or control of contributions?, (iv) Gross receipts from activity, (v) Amount paid to (or retained by) fundraiser listed in col (i), (vi) Amount paid to (or retained by) organization.

3 List all states in which the organization is registered or licensed to solicit funds or has been notified it is exempt from registration or licensing

CO

Part II Fundraising Events. Complete if the organization answered "Yes" to Form 990, Part IV, line 18, or reported more than \$15,000 of fundraising event contributions and gross income on Form 990-EZ, lines 1 and 6b. List events with gross receipts greater than \$5,000.

		(a) Event #1	(b) Event #2	(c) Other events	(d) Total events
		<u>HEROES-MNTL HLT</u> (event type)	_____ (event type)	<u>0</u> (total number)	(add col (a) through col (c))
Revenue	1 Gross receipts	73,267			73,267
	2 Less Contributions	20,251			20,251
	3 Gross income (line 1 minus line 2)	53,016			53,016
Direct Expenses	4 Cash prizes				
	5 Noncash prizes				
	6 Rent/facility costs	35,090			35,090
	7 Food and beverages				
	8 Entertainment	8,509			8,509
	9 Other direct expenses	15,538			15,538
	10 Direct expense summary Add lines 4 through 9 in column (d) ▶				(59,137)
11 Net income summary Combine line 3, column (d), and line 10 ▶				-6,121	

Part III Gaming. Complete if the organization answered "Yes" to Form 990, Part IV, line 19, or reported more than \$15,000 on Form 990-EZ, line 6a.

		(a) Bingo	(b) Pull tabs/Instant bingo/progressive bingo	(c) Other gaming	(d) Total gaming (add col (a) through col (c))
		1 Gross revenue			
Direct Expenses	2 Cash prizes				
	3 Non-cash prizes				
	4 Rent/facility costs				
	5 Other direct expenses				
6 Volunteer labor	<input type="checkbox"/> Yes _____ <input type="checkbox"/> No	<input type="checkbox"/> Yes _____ <input type="checkbox"/> No	<input type="checkbox"/> Yes _____ <input type="checkbox"/> No		
7 Direct expense summary Add lines 2 through 5 in column (d) ▶					
8 Net gaming income summary Combine lines 1 and 7 in column (d) ▶					

9 Enter the state(s) in which the organization operates gaming activities _____

a Is the organization licensed to operate gaming activities in each of these states? Yes No

b If "No," explain _____

.....

.....

10a Were any of the organization's gaming licenses revoked, suspended or terminated during the tax year? Yes No

b If "Yes," explain _____

.....

.....

Does the organization operate gaming activities with nonmembers? Yes No

12 Is the organization a grantor, beneficiary or trustee of a trust or a member of a partnership or other entity formed to administer charitable gaming? Yes No

13 Indicate the percentage of gaming activity operated in

a The organization's facility	13a	
b An outside facility	13b	

14 Enter the name and address of the person who prepares the organization's gaming/special events books and records

Name ▶

Address ▶

15a Does the organization have a contract with a third party from whom the organization receives gaming revenue? Yes No

b If "Yes," enter the amount of gaming revenue received by the organization ▶ \$ _____ and the amount of gaming revenue retained by the third party ▶ \$ _____

c If "Yes," enter name and address of the third party

Name ▶

Address ▶

16 Gaming manager information

Name ▶

Gaming manager compensation ▶ \$

Description of services provided ▶

Director/officer Employee Independent contractor

17 Mandatory distributions

a Is the organization required under state law to make charitable distributions from the gaming proceeds to retain the state gaming license? Yes No

b Enter the amount of distributions required under state law distributed to other exempt organizations or spent in the organization's own exempt activities during the tax year ▶ \$ _____

Part IV Supplemental Information. Complete this part to provide the explanations required by Part I, line 2b, columns (iii) and (v), and Part III, lines 9, 9b, 10b, 15b, 15c, 16, and 17b, as applicable. Also complete this part to provide any additional information (see instructions).

Identifier	Return Reference	Explanation
------------	------------------	-------------

Schedule J
(Form 990)

Compensation Information

OMB No 1545-0047

2012

Open to Public Inspection

For certain Officers, Directors, Trustees, Key Employees, and Highest Compensated Employees

▶ Complete if the organization answered "Yes" to Form 990, Part IV, question 23.

▶ Attach to Form 990. ▶ See separate instructions.

Department of the Treasury
Internal Revenue Service

Name of the organization
Aspenpointe Inc

Employer identification number

42-1600485

Part I Questions Regarding Compensation

- 1a** Check the appropriate box(es) if the organization provided any of the following to or for a person listed in Form 990, Part VII, Section A, line 1a Complete Part III to provide any relevant information regarding these items
- | | |
|--|--|
| <input type="checkbox"/> First-class or charter travel | <input type="checkbox"/> Housing allowance or residence for personal use |
| <input type="checkbox"/> Travel for companions | <input type="checkbox"/> Payments for business use of personal residence |
| <input type="checkbox"/> Tax indemnification and gross-up payments | <input type="checkbox"/> Health or social club dues or initiation fees |
| <input type="checkbox"/> Discretionary spending account | <input type="checkbox"/> Personal services (e g , maid, chauffeur, chef) |

b If any of the boxes in line 1a are checked, did the organization follow a written policy regarding payment or reimbursement or provision of all of the expenses described above? If "No," complete Part III to explain

2 Did the organization require substantiation prior to reimbursing or allowing expenses incurred by all officers, directors, trustees, and the CEO/Executive Director, regarding the items checked in line 1a?

3 Indicate which, if any, of the following the filing organization used to establish the compensation of the organization's CEO/Executive Director Check all that apply Do not check any boxes for methods used by a related organization to establish compensation of the CEO/Executive Director, but explain in Part III

- | | |
|---|---|
| <input checked="" type="checkbox"/> Compensation committee | <input checked="" type="checkbox"/> Written employment contract |
| <input type="checkbox"/> Independent compensation consultant | <input checked="" type="checkbox"/> Compensation survey or study |
| <input checked="" type="checkbox"/> Form 990 of other organizations | <input checked="" type="checkbox"/> Approval by the board or compensation committee |

4 During the year, did any person listed in Form 990, Part VII, Section A, line 1a with respect to the filing organization or a related organization

- a** Receive a severance payment or change-of-control payment?
- b** Participate in, or receive payment from, a supplemental nonqualified retirement plan?
- c** Participate in, or receive payment from, an equity-based compensation arrangement?
If "Yes" to any of lines 4a-c, list the persons and provide the applicable amounts for each item in Part III

Only 501(c)(3) and 501(c)(4) organizations only must complete lines 5-9.

5 For persons listed in Form 990, Part VII, Section A, line 1a, did the organization pay or accrue any compensation contingent on the revenues of

- a** The organization?
- b** Any related organization?

If "Yes," to line 5a or 5b, describe in Part III

6 For persons listed in Form 990, Part VII, Section A, line 1a, did the organization pay or accrue any compensation contingent on the net earnings of

- a** The organization?
- b** Any related organization?

If "Yes," to line 6a or 6b, describe in Part III

7 For persons listed in Form 990, Part VII, Section A, line 1a, did the organization provide any non-fixed payments not described in lines 5 and 6? If "Yes," describe in Part III

8 Were any amounts reported in Form 990, Part VII, paid or accrued pursuant to a contract that was subject to the initial contract exception described in Regulations section 53.4958-4(a)(3)? If "Yes," describe in Part III

9 If "Yes" to line 8, did the organization also follow the rebuttable presumption procedure described in Regulations section 53.4958-6(c)?

	Yes	No
1b		
2		
4a		No
4b	Yes	
4c		No
5a		No
5b		No
6a		No
6b		No
7	Yes	
8		No
9		

Part II Officers, Directors, Trustees, Key Employees, and Highest Compensated Employees. Use duplicate copies if additional space is needed.

For each individual whose compensation must be reported in Schedule J, report compensation from the organization on row (i) and from related organizations, described in the instructions, on row (ii) Do not list any individuals that are not listed on Form 990, Part VII

Note. The sum of columns (B)(i)-(iii) for each listed individual must equal the total amount of Form 990, Part VII, Section A, line 1a, applicable column (D) and (E) amounts for that individual

(A) Name and Title	(B) Breakdown of W-2 and/or 1099-MISC compensation			(C) Retirement and other deferred compensation	(D) Nontaxable benefits	(E) Total of columns (B)(i)-(D)	(F) Compensation reported as deferred in prior Form 990
	(i) Base compensation	(ii) Bonus & incentive compensation	(iii) Other reportable compensation				
See Additional Data Table							

Part III Supplemental Information

Complete this part to provide the information, explanation, or descriptions required for Part I, lines 1a, 1b, 3, 4a, 4b, 4c, 5a, 5b, 6a, 6b, 7, and 8, and for Part II. Also complete this part for any additional information.

Identifier	Return Reference	Explanation
Schedule J, Part 1, Question 7	Description of Non-Fixed Payments	A Performance Award program was approved based on the overall performance of the company at the end of the fiscal year 2012/2013. Recommendations for awards were based upon a number of target success factors including productivity, contribution, services customers/clients, and leadership (for managers). Dollar amounts of individual awards were determined by the President and CEO, after consultation with the Vice Presidents and above.
SCHEDULE J, PART 1, QUESTION 4B	NON-QUALIFIED PLANS	INCLUDED IN MORRIS ROTH'S OTHER REPORTABLE COMPENSATION (COLUMN III) IS \$83,000 OF 457(F) PAID OUT TO HIM. OF THIS AMOUNT, \$33,500 WAS COMPENSATION REPORTED AS DEFERRED (COLUMN F) IN THE 2011 FORM 990. ADDITIONALLY, INCLUDED IN OTHER DEFERRED COMPENSATION (COLUMN C) IS \$50,000 FOR THE CALENDAR YEAR 2012 DEFERRAL.

Software ID:
Software Version:
EIN: 42-1600485
Name: Aspenpointe Inc

Form 990, Schedule J, Part II - Officers, Directors, Trustees, Key Employees, and Highest Compensated Employees

(A) Name		(B) Breakdown of W-2 and/or 1099-MISC compensation			(C) Deferred compensation	(D) Nontaxable benefits	(E) Total of columns (B)(i)-(D)	(F) Compensation reported in prior Form 990 or Form 990-EZ
		(i) Base Compensation	(ii) Bonus & incentive compensation	(iii) Other compensation				
Morris Roth	(i) (ii)	250,292 0	35,700 0	104,311 0	80,000 0	19,471 0	489,774 0	51,000 0
Paul Sexton	(i) (ii)	173,356	25,700	21,584	7,038	2,862	230,540	0
Kelly Phillips-Henry	(i) (ii)	169,741	20,700	21,380	6,838	1,035	219,694	0
KEVIN LIGHT	(i) (ii)	147,953	20,700	21,272	6,043	8,487	204,455	0
FREDERICK MICHEL	(i) (ii)	214,699	15,700	21,185	9,180	26,612	287,376	0
MARY ZESIEWICZ	(i) (ii)	264,992	1,450	51	0	14,679	281,172	0
ANDREW SEDILLO	(i) (ii)	204,298	1,140	51	8,412	23,788	237,689	0
MARTIN KRON	(i) (ii)	199,704	1,000	101	8,225	23,720	232,750	0
KEVIN SNYDER	(i) (ii)	190,892	1,450	51	7,734	9,617	209,744	0
NANCY CRANEY	(i) (ii)	142,515	10,700	17,707	6,185	17,861	194,968	0

SCHEDULE O
(Form 990 or 990-EZ)

Department of the Treasury
Internal Revenue Service

Supplemental Information to Form 990 or 990-EZ

**Complete to provide information for responses to specific questions on
Form 990 or to provide any additional information.**
▶ **Attach to Form 990 or 990-EZ.**

2012

**Open to Public
Inspection**

Name of the organization
Aspenpointe Inc

Employer identification number

42-1600485

Identifier	Return Reference	Explanation
990 Review Process	Part VI, Question 10	The form 990 return is prepared by a third party and goes through a detailed review by the controller and CFO of the organization. Once reviewed, the return is then presented to the Audit committee of the board where they will conduct a secondary review and recommend the filing of the 990 to the board of directors. Once approval is made, a final copy of the 990 will be sent to the board via email and the 990 will be electronically filed with the IRS.

Identifier	Return Reference	Explanation
Describe how conflict of interest policy is monitored & enforced	Part VI, Question 12c	<p>The organization has a comprehensive corporate compliance program which covers staff and directors. Compliance is monitored through internal audits of billing, medical charting, accounting, and the compliance program itself. The organization educates staff on compliance on an ongoing basis and conducts an annual on-line questionnaire to confirm staff understanding of the program. The program utilizes a hotline for reporting of suspected compliance issues. The hotline is run by a third party vendor and offers anonymity to the reporter. The staff is educated on the hotline's use and access on an ongoing basis and this knowledge is an important part of the annual staff questionnaire. Designated personnel working in areas affecting compliance report to the board of directors' compliance subcommittee on a quarterly basis. The compliance committee reports directly to the board. The conflict of interest policy applies to all board members and to all staff of all companies. The committee or the board may make determinations of whether or not an actual conflict of interest exists. The individual with the conflict cannot participate in the decision making process and is not permitted to vote on the proposed transaction creating the conflict. The subcommittee or the board may investigate any suspected failures to report a conflict and may take appropriate disciplinary action or corrective action. Each year the board of directors is given a compliance report on the previous year's compliance program. Following this presentation, each board member is required to sign an acknowledgement which confirms their understanding of, and agreement with, the organization's conflict of interest policy.</p>

Identifier	Return Reference	Explanation
REVIEW OF CEO COMPENSATION	Part VI, Question 15a	In 2013, the Sr Vice President of Human Resources and the Compensation Committee of the Board of Directors reviewed the 2013 salary survey data from Economic Research Institute (ERI), Mental Health Corporations of America (MHCA), Mountain States Employers Council (MSEC), and 990's of similar organizations. As this was occurring, our CEO had announced his retirement and the Board used the aforementioned information to establish the salary range for a new CEO. The subsequent hiring of the new CEO included a compensation package within the parameters suggested by the survey data. All discussions related to CEO compensation were held in executive session, so they were not recorded in the Board minutes.

Identifier	Return Reference	Explanation
REVIEW OF OTHER OFFICER OR KEY EMPLOYEE COMPENSATION	Part VI, Question 15b	In 2013, the Sr Vice President of Human Resources and the Compensation Committee of the Board of Directors reviewed the 2013 salary survey data from Economic Research Institute (ERI), Mental Health Corporations of America (MHCA), Mountain States Employers Council (MSEC), and Cejka Search. This information was then presented to the full Board by the Board Chair, along with annual compensation recommendations for the other officers and key employees. These discussions were held in executive session, so they were not recorded in the Board minutes.

Identifier	Return Reference	Explanation
Describe how documents are made available to the public	Part VI, Question 19	The organization's financial statements, conflict of interest policy, and governing documents are made available to the public upon request

Identifier	Return Reference	Explanation
DESCRIBE THE EXEMPT PURPOSE ACHIEVEMENTS FOR THE ORGANIZATION	FORM 990, PART III, 4A	<p>For the second straight year, the Colorado Springs community was faced with natural disaster. Just as the community was recovering from a devastating forest fire in Black Forest, torrential rains caused flooding on the city's west side, causing millions of dollars of damage to homes and businesses. The tragedies received national attention and images were played on television newscasts and Web sites across the globe for many nights after. The footage of the destruction left behind by these two natural disasters is truly amazing but it's not nearly as amazing as the community's response to the fire and its victims. AspenPointe employees rolled up their sleeves and jumped in with both feet. We attended key community meetings, staffed the disaster recovery center every day, were by victims' sides as they returned to their homes, and we continue to provide assistance long after the rebuilding process has begun. This is one way that AspenPointe continues to be the Provider of Choice for the region, one of the four areas under which we list our accomplishments over the last year. The other three categories are "Community Partner of Choice," "Employer of Choice" and "Sustainability."</p> <p>PROVIDER OF CHOICE - Developed and implemented a five-day-a-week Adult Behavioral Intensive Outpatient Program to encourage and reinforce critical thinking in everyday activities - Established the AspenPointe Innovation Center to consolidate storage space and provide job training for a variety of occupations, including art framing, product manufacturing, floor cleaning, furniture assembly and construction - Delivered AspenPointe's first mobile app, a step toward increasing access to care by taking advantage and embracing new technology - The Peer Navigator Program helped 390 clients and found jobs for 120 individuals - Created the Healthcare Innovation Team to position AspenPointe for healthcare reform - Implemented an AspenPointe-wide pain management consultation group - Contact Center responded to 105,677 inbound calls - Catalyst Kitchens awarded AspenPointe Caf Model Membership in recognition of the significant and rapid progress the Caf has made in its Culinary Training Program</p> <p>COMMUNITY PARTNER OF CHOICE - Developed a comprehensive care management solution for Regional Collaborative Care Organization (RCCO) Region 7's most significant challenges around coordination, risk stratification, care planning, engagement and no shows, medication adherence and ED diversion - Completed and signed a data sharing agreement between AspenPointe, our Behavioral Health Organization, and the RCCO 7 to foster improved care coordination and population health management, oversight for high utilizers and ED diversion - Increased scope of work and contract amount for YMCA custodial partnership - Completed integrated care levels of service package and cost sharing model to market AspenPointe solutions and benefits to Primary Care Practices (PCPs) - Operationalized behavioral health integration and services in two large PCPs by embedding behavioral health consultants into a fully integrated model of care - Joined with the University Of Colorado Bethel School Of Nursing to begin development of a Telecare nursing certification program</p> <p>EMPLOYER OF CHOICE - Awarded an Adolph Coors Foundation grant for \$300,000 over the next three years helping recently separated veterans find jobs - Thirty-three percent of employees who completed Strategic Talent Management were promoted into higher level positions - Sixteen potential managers completed AspenPointe's Crossroads Program, which gives emerging leaders a view into the roles, responsibilities, and skills necessary to transition into management roles - Purchased a Community Bus to provide tours for community members, new employees and for special staff functions - Produced a series of videos featuring AspenPointe leadership explaining facilities and services for our community tour. Transformed the videos into a virtual community tour for the AspenPointe web site - Career and Development Services found jobs for 166 clients, the most placements in five years - The GED program graduated 951 students, the highest amount of any year to date</p> <p>SUSTAINABILITY - Total catering sales through AspenPointe Cafe eclipsed \$238,000 representing almost a 40 percent increase over the previous year - Awarded a Federal Aviation Administration contract, the first new National Institute for the Severely Handicapped contract for AspenPointe in over six years - AspenPointe Cafe at Citizens Service Center served nearly 94,400 customers - Completed, with the help of donors, a 42-foot geodesic dome that will allow AspenPointe to grow an additional 2,700 pounds of food per year in our Community Garden - Launched a pilot merchandise line made from recycled military parachutes. Sales from the Peer-A-Chute Program will benefit the Peer Navigator Program and employ veterans - Worked with an award-winning historian/writer</p>

Identifier	Return Reference	Explanation
DESCRIBE THE EXEMPT PURPOSE ACHIEVEMENTS FOR THE ORGANIZATION	FORM 990, PART III, 4A	to create a book about the history of AspenPointe Deep Roots is available at select AspenPointe facilities and through online book stores

Identifier	Return Reference	Explanation
other changes in net assets	part xi, line 9	CHANGE IN THE INTEREST OF ASPENPOINTE FOUNDATION 252,875

Identifier	Return Reference	Explanation
business relationships	part vi, question 2	MORRIS ROTH, KEVIN LIGHT, KELLY PHILLIPS-HENRY, AND PAUL SEXTON HAVE A BUSINESS RELATIONSHIP AS THEY ARE DIRECTORS OF ASPENPOINTE MANAGEMENT, A RELATED ORGANIZATION TAXABLE AS A CORPORATION

Identifier	Return Reference	Explanation
group return	page 1, question h (c)	ASPENPOINTE INC IS THE PARENT ORGANIZATION OF A GROUP FORM 990 RETURN THE FOLLOWING ENTITIES ARE SUBSIDIARY ORGANIZATIONS OF A SPENPOINTE INC UNDER THE GROUP EXEMPTION #9701 ASPENPOINTE TELECARE, LLC EIN 20-2788182 ASPENPOINTE HEALTH NETWORK EIN 20-4048014 ASPENPOINTE ENTERPRISES EIN 32-0098858 ASPENPOINTE BEHAVIORAL HEALTH SERVICES EIN 84-0602716 ASPENPOINTE YOUTH DIRECTIONS EIN 84-0681414 ASPENPOINTE FOUNDATION EIN 84-0893577 ASPENPOINTE PROPERTIES EIN 84-1119153 ASPENPOINTE EMPLOYMENT EIN 84-1191609 ASPENPOINTE GROUP RETURN EIN 90-0528134

Identifier	Return Reference	Explanation
Description of Fees for Services - Other	Part IX, line 11g	Payment to Aspenpointe Health Services for the Delivery of Behavioral Health Services 26,669,299

**SCHEDULE R
(Form 990)**

Related Organizations and Unrelated Partnerships

OMB No 1545-0047

2012

**Open to Public
Inspection**

▶ **Complete if the organization answered "Yes" to Form 990, Part IV, line 33, 34, 35, 36, or 37.**
▶ **Attach to Form 990.** ▶ **See separate instructions.**

Department of the Treasury
Internal Revenue Service

Name of the organization
Aspenpointe Inc

Employer identification number

42-1600485

Part I Identification of Disregarded Entities (Complete if the organization answered "Yes" to Form 990, Part IV, line 33.)

(a) Name, address, and EIN (if applicable) of disregarded entity	(b) Primary activity	(c) Legal domicile (state or foreign country)	(d) Total income	(e) End-of-year assets	(f) Direct controlling entity
(1) Aspenpointe Medicaid LLC 220 Ruskin Drive Colorado Springs, CO 80910 20-2578024	Mental Health	CO	26,796,737	7,558,759	ASPEN NTWK

Part II Identification of Related Tax-Exempt Organizations (Complete if the organization answered "Yes" to Form 990, Part IV, line 34 because it had one or more related tax-exempt organizations during the tax year.)

(a) Name, address, and EIN of related organization	(b) Primary activity	(c) Legal domicile (state or foreign country)	(d) Exempt Code section	(e) Public charity status (if section 501(c)(3))	(f) Direct controlling entity	(g) Section 512(b)(13) controlled entity?	
						Yes	No
See Additional Data Table							

Part III Identification of Related Organizations Taxable as a Partnership (Complete if the organization answered "Yes" to Form 990, Part IV, line 34 because it had one or more related organizations treated as a partnership during the tax year.)

(a) Name, address, and EIN of related organization	(b) Primary activity	(c) Legal domicile (state or foreign country)	(d) Direct controlling entity	(e) Predominant income(related, unrelated, excluded from tax under sections 512-514)	(f) Share of total income	(g) Share of end-of-year assets	(h) Disproportionate allocations?		(i) Code V—UBI amount in box 20 of Schedule K-1 (Form 1065)	(j) General or managing partner?		(k) Percentage ownership
							Yes	No		Yes	No	
(1) ASPENPOINTE BUILDER 220 Ruskin Drive Colorado Springs, CO 80910 26-1579796	Construction	CO	ASPEN MGMT	N/A				No			No	

Part IV Identification of Related Organizations Taxable as a Corporation or Trust (Complete if the organization answered "Yes" to Form 990, Part IV, line 34 because it had one or more related organizations treated as a corporation or trust during the tax year.)

(a) Name, address, and EIN of related organization	(b) Primary activity	(c) Legal domicile (state or foreign country)	(d) Direct controlling entity	(e) Type of entity (C corp, S corp, or trust)	(f) Share of total income	(g) Share of end-of-year assets	(h) Percentage ownership	(i) Section 512 (b)(13) controlled entity?	
								Yes	No
(1) Aspen Management Inc 220 Ruskin Colorado Springs, CO 80910 84-1116981	Mgmt Services	CO	ASPEN ENTERPR	C Corp					

Part V Transactions With Related Organizations (Complete if the organization answered "Yes" to Form 990, Part IV, line 34, 35b, or 36.)

Note. Complete line 1 if any entity is listed in Parts II, III, or IV of this schedule

1 During the tax year, did the organization engage in any of the following transactions with one or more related organizations listed in Parts II-IV?

- a** Receipt of **(i)** interest **(ii)** annuities **(iii)** royalties or **(iv)** rent from a controlled entity
- b** Gift, grant, or capital contribution to related organization(s)
- c** Gift, grant, or capital contribution from related organization(s)
- d** Loans or loan guarantees to or for related organization(s)
- e** Loans or loan guarantees by related organization(s)

- f** Dividends from related organization(s)
- g** Sale of assets to related organization(s)
- h** Purchase of assets from related organization(s)
- i** Exchange of assets with related organization(s)
- j** Lease of facilities, equipment, or other assets to related organization(s)

- k** Lease of facilities, equipment, or other assets from related organization(s)
- l** Performance of services or membership or fundraising solicitations for related organization(s)
- m** Performance of services or membership or fundraising solicitations by related organization(s)
- n** Sharing of facilities, equipment, mailing lists, or other assets with related organization(s)
- o** Sharing of paid employees with related organization(s)

- p** Reimbursement paid to related organization(s) for expenses
- q** Reimbursement paid by related organization(s) for expenses

- r** Other transfer of cash or property to related organization(s)
- s** Other transfer of cash or property from related organization(s)

	Yes	No
1a		No
1b		No
1c		No
1d	Yes	
1e		No
1f		
1g		No
1h		No
1i		No
1j	Yes	
1k	Yes	
1l	Yes	
1m	Yes	
1n		No
1o	Yes	
1p	Yes	
1q	Yes	
1r	Yes	
1s	Yes	

2 If the answer to any of the above is "Yes," see the instructions for information on who must complete this line, including covered relationships and transaction thresholds

(a) Name of other organization	(b) Transaction type (a-s)	(c) Amount involved	(d) Method of determining amount involved
See Additional Data Table			

Part VI Unrelated Organizations Taxable as a Partnership (Complete if the organization answered "Yes" to Form 990, Part IV, line 37.)

Provide the following information for each entity taxed as a partnership through which the organization conducted more than five percent of its activities (measured by total assets or gross revenue) that was not a related organization See instructions regarding exclusion for certain investment partnerships

(a) Name, address, and EIN of entity	(b) Primary activity	(c) Legal domicile (state or foreign country)	(d) Predominant income (related, unrelated, excluded from tax under section 512-514)	(e) Are all partners section 501(c)(3) organizations?		(f) Share of total income	(g) Share of end-of-year assets	(h) Disproportionate allocations?		(i) Code V—UBI amount in box 20 of Schedule K-1 (Form 1065)	(j) General or managing partner?		(k) Percentage ownership
				Yes	No			Yes	No		Yes	No	

Software ID:
Software Version:
EIN: 42-1600485
Name: Aspenpointe Inc

Part VII Supplemental Information

Complete this part to provide additional information for responses to questions on Schedule R (see instructions)

Identifier	Return Reference	Explanation	
--> Form 990, Schedule R, Part V - Transactions With Related Organizations			
(a) Name of other organization	(b) Transaction type(a-s)	(c) Amount Involved	(d) Method of determining amount involved
Aspenpointe Behavioral Health Services	K & P	5,292,917	
Aspenpointe Behavioral Health Services	L	26,084,308	
ASPENPOINTE PROPERTIES	J	300,971	
ASPENPOINTE PROPERTIES	K & P	610,171	
ASPENPOINTE HEALTH NETWORKS	K & P	566,696	
ASPENPOINTE EMPLOYMENT	K & P	141,872	
ASPENPOINTE ENTERPRISES	K & P	1,122,121	
ASPENPOINTE YOUTH DIRECTIONS	K & P	170,986	
ASPENPOINTE BEHAVIORAL HEALTH SERVICES	N	21,023,948	
ASPENPOINTE EMPLOYMENT	N	466,852	
ASPENPOINTE ENTERPRISES	N	3,096,051	
ASPENPOINTE YOUTH DIRECTIONS	N	585,682	
ASPENPOINTE HEALTH NETWORK	N	2,101,725	
ASPENPOINTE PROPERTIES	N	335,499	
ASPENPOINTE BEHAVIORAL HEALTH SERVICES	R	7,461,107	
ASPENPOINTE HEALTH NETWORK	R	94,664	
ASPENPOINTE PROPERTIES	R	3,053,194	
ASPENPOINTE TELECARE	R	178,294	
ASPENPOINTE EMPLOYMENT	R	845,557	
ASPENPOINTE ENTERPRISES	R	2,118,399	
ASPENPOINTE YOUTH DIRECTIONS	R	295,771	
ASPENPOINTE BEHAVIORAL HEALTH SERVICES	S	238	
ASPENPOINTE PROPERTIES	S	559,653	
ASPENPOINTE HEALTH NETWORK	S	365,777	
ASPENPOINTE TELECARE	S	1,000	

Form 990, Schedule R, Part V - Transactions With Related Organizations

(a) Name of other organization	(b) Transaction type(a-s)	(c) Amount Involved	(d) Method of determining amount involved
ASPENPOINTE ENTERPRISES	S	42,830	

000775

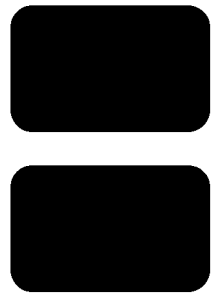
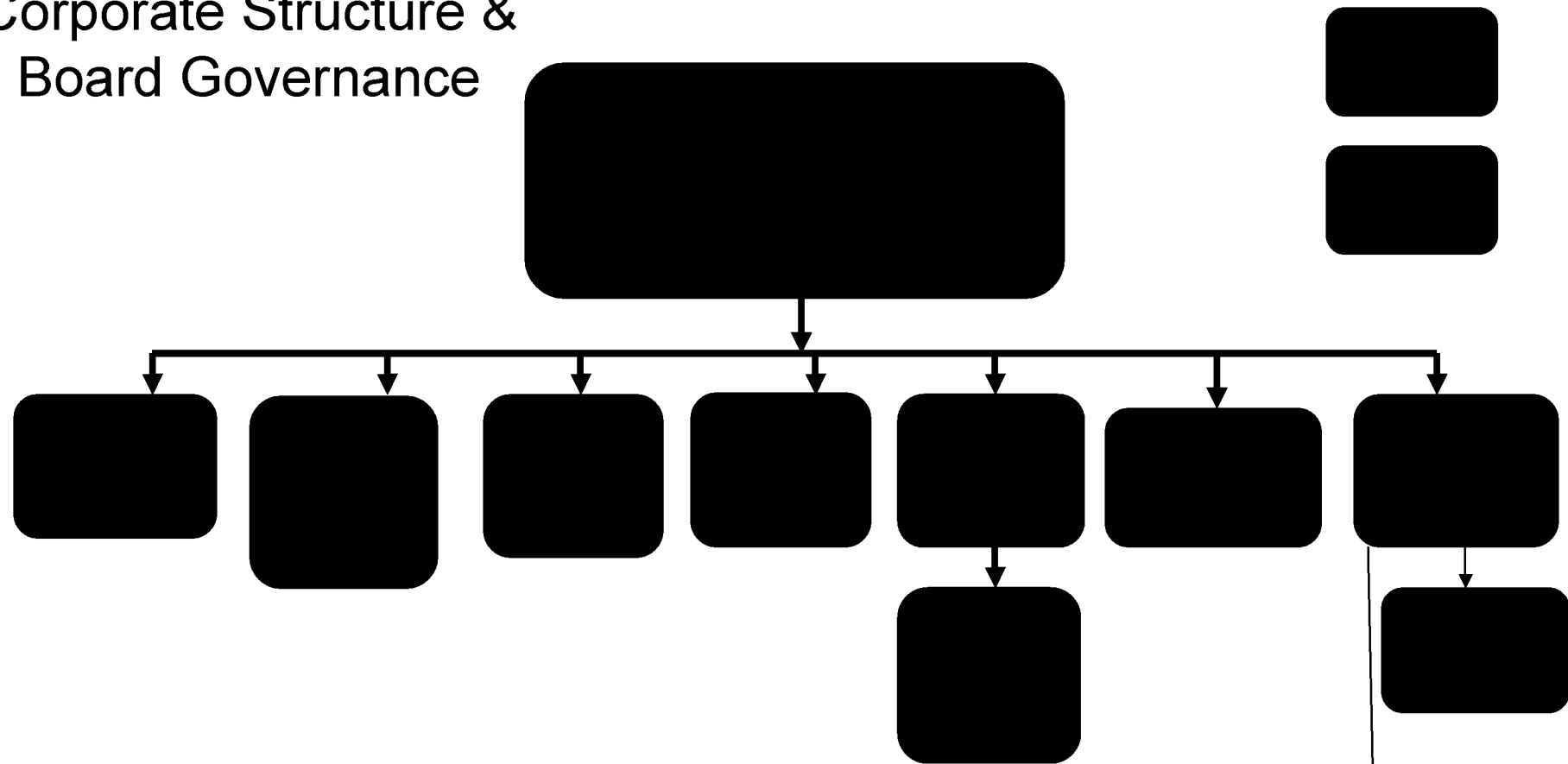
SUBSIDIARY ORGANIZATION OF ASPENPOINTE INC
GEN NUMBER 9701PAGE 1
CYCLE 201253

421600485	PARENT	ASPENPOINTE INC 220 RUSKIN DR	COLORADO SPGS	CO	80910-2522209	06
202788182	SUB	ASPENPOINTE INC 220 RUSKIN DR ASPENPOINTE TELECARE LLC	COLORADO SPGS	CO	80910-0000000	% LLOYD K LIGHT 06
204048014	SUB	ASPENPOINTE INC 220 RUSKIN DR ASPENPOINTE HEALTH NETWORK	COLORADO SPGS	CO	80910-0000000	% LLOYD K LIGHT 06
320098858	SUB	ASPENPOINTE INC 220 RUSKIN DR ASPENPOINTE ENTERPRISES	COLORADO SPGS	CO	80910-2522209	% LLOYD K LIGHT 06
840602716	SUB	ASPENPOINTE INC 220 RUSKIN DR ASPENPOINTE HEALTH SERVICES	COLORADO SPGS	CO	80910-2522209	% LLOYD K LIGHT 06
840681414	SUB	ASPENPOINTE INC 220 RUSKIN DR ASPENPOINTE YOUTH DIRECTIONS	COLORADO SPGS	CO	80910-2522209	% LLOYD K LIGHT 06
840893577	SUB	ASPENPOINTE INC 220 RUSKIN DR ASPENPOINTE FOUNDATION	COLORADO SPGS	CO	80910-0000000	% LLOYD K LIGHT 06
841119153	SUB	ASPENPOINTE INC 220 RUSKIN DR ASPENPOINTE PROPERTIES	COLORADO SPGS	CO	80910-0000000	% LLOYD K LIGHT 06
841191609	SUB	ASPENPOINTE INC 220 RUSKIN DR ASPENPOINTE EMPLOYMENT	COLORADO SPGS	CO	80910-2522209	% LLOYD K LIGHT 06
900528134	SUB	ASPENPOINTE INC 220 RUSKIN DR GROUP RETURN	COLORADO SPGS	CO	80910-2522209	06

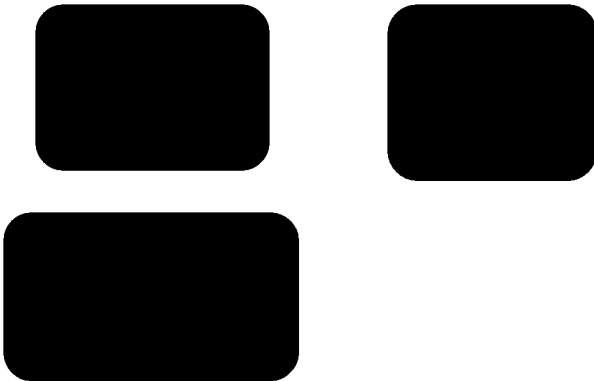
421600485 SUBSIDIARY ORGANIZATION OF ASPENPOINTE INC
GEN NUMBER 9701 SUBSIDIARY TOTAL IS 9

CYCLE 201253

Corporate Structure & Board Governance



Trade Names



*Revised
07/8/2010*