



See a Social Security Number? Say Something!
Report Privacy Problems to <https://public.resource.org/privacy>
Or call the IRS Identity Theft Hotline at 1-800-908-4490



Return of Organization Exempt From Income Tax

OMB No 1545-0047

2012

Open to Public Inspection

Under section 501(c), 527, or 4947(a)(1) of the Internal Revenue Code (except black lung benefit trust or private foundation)

▶ The organization may have to use a copy of this return to satisfy state reporting requirements.

Department of the Treasury
Internal Revenue Service

A For the 2012 calendar year, or tax year beginning 2012 , and ending 20	
B Check if applicable: <input type="checkbox"/> Address change <input type="checkbox"/> Name change <input checked="" type="checkbox"/> Initial return <input type="checkbox"/> Terminated <input type="checkbox"/> Amended return <input type="checkbox"/> Application pending	C Name of organization High Concept Laboratories, NFP Doing Business As High Concept Laboratories Number and street (or P.O. box if mail is not delivered to street address) Room/suite 1401 W. Wabansia Avenue City, town or post office, state, and ZIP code Chicago, IL 60642
	D Employer identification number 45-0797377
	E Telephone number 630-430-7539
	G Gross receipts \$ \$35,472
	F Name and address of principal officer Kevin D. Simmons 843 W. Arlington Place, Chicago, IL 60614
I Tax-exempt status <input checked="" type="checkbox"/> 501(c)(3) <input type="checkbox"/> 501(c) () ◀ (insert no.) <input type="checkbox"/> 4947(a)(1) or <input type="checkbox"/> 527	H(a) Is this a group return for affiliates? <input type="checkbox"/> Yes <input checked="" type="checkbox"/> No H(b) Are all affiliates included? <input type="checkbox"/> Yes <input type="checkbox"/> No If "No," attach a list (see instructions)
J Website: ▶ www.HIGHCONCEPTLABORATORIES.ORG	H(c) Group exemption number ▶
K Form of organization <input checked="" type="checkbox"/> Corporation <input type="checkbox"/> Trust <input type="checkbox"/> Association <input type="checkbox"/> Other ▶	L Year of formation. 2011 M State of legal domicile IL

Part I Summary			
Activities & Governance	1 Briefly describe the organization's mission or most significant activities: To promote the arts by assisting the development, production, and promotion of new artistic works from multiple disciplines through sponsored artist programs conducted throughout the year.		
	2 Check this box <input type="checkbox"/> if the organization discontinued its operations or disposed of more than 25% of its net assets.		
	3 Number of voting members of the governing body (Part VI, line 1a)	3	4
	4 Number of independent voting members of the governing body (Part VI, line 1b)	4	3
	5 Total number of individuals employed in calendar year 2012 (Part V, line 2a)	5	0
	6 Total number of volunteers (estimate if necessary)	6	5
	7a Total unrelated business revenue from Part VIII, column (C), line 12	7a	\$0
b Net unrelated business taxable income from Form 990-T, line 34	7b	\$0	
Revenue	8 Contributions and grants (Part VIII, line 1h)	Prior Year 0	Current Year 0
	9 Program service revenue (Part VIII, line 2g)	0	0
	10 Investment income (Part VIII, column (A), lines 3, 4, and 7d)	0	0
	11 Other revenue (Part VIII, column (A), lines 5, 6d, 8c, 9c, 10c, and 11e)	0	0
	12 Total revenue—add lines 8 through 11 (must equal Part VIII, column (A), line 12)	0	\$35,472
	Expenses	13 Grants and similar amounts paid (Part IX, column (A), lines 1–3)	0
14 Benefits paid to or for members (Part IX, column (A), line 4)		0	0
15 Salaries, other compensation, employee benefits (Part IX, column (A), lines 5–10)		0	0
16a Professional fundraising fees (Part IX, column (A), line 11e)		0	0
b Total fundraising expenses (Part IX, column (D), line 25) ▶ \$3,240			
17 Other expenses (Part IX, column (A), lines 11a–11d, 11f–24e)		0	\$35,464
18 Total expenses. Add lines 13–17 (must equal Part IX, column (A), line 25)	0	\$35,464	
19 Revenue less expenses. Subtract line 18 from line 12	0	\$8	
Net Assets or Fund Balances	20 Total assets (Part X, line 16)	Beginning of Current Year 0	End of Year \$8
	21 Total liabilities (Part X, line 26)	0	0
	22 Net assets or fund balances. Subtract line 21 from line 20	0	\$8

Part II Signature Block

Under penalties of perjury, I declare that I have examined this return, including accompanying schedules and statements, and to the best of my knowledge and belief, it is true, correct, and complete. Declaration of preparer (other than officer) is based on all information of which preparer has any knowledge.

Sign Here	Signature of officer 	Date 5/13/13
	Type or print name and title Kevin Simmons, Chairman	

Paid Preparer Use Only	Print/Type preparer's name L. James Margner	Preparer's signature 	Date 5/18/13	Check <input checked="" type="checkbox"/> if self-employed	PTIN P00640787
	Firm's name ▶ Tax Advisory Services, LLC	Firm's EIN ▶ 46-2056389			
	Firm's address ▶ 459 S. Prairie Ave., Elmhurst, IL 60126	Phone no 630-279-2822			

May the IRS discuss this return with the preparer shown above? (see instructions) Yes No

SCANNED JUN 17 2013

OS 22

Part III Statement of Program Service Accomplishments

Check if Schedule O contains a response to any question in this Part III

1 Briefly describe the organization's mission:

Fostering the promotion of the artistic development of multi-disciplined artists through the organization's "Sponsored Artist Programs" which are conducted throughout the performance year.

2 Did the organization undertake any significant program services during the year which were not listed on the prior Form 990 or 990-EZ? Yes No

If "Yes," describe these new services on Schedule O.

3 Did the organization cease conducting, or make significant changes in how it conducts, any program services? Yes No

If "Yes," describe these changes on Schedule O.

4 Describe the organization's program service accomplishments for each of its three largest program services, as measured by expenses. Section 501(c)(3) and 501(c)(4) organizations are required to report the amount of grants and allocations to others, the total expenses, and revenue, if any, for each program service reported.

4a (Code: 0) (Expenses \$ \$4,136 including grants of \$ 0) (Revenue \$ 0)

July 2012: HCL's Sponsored Artist Program Series:

HCL showcased a variety of musical, dance, operatic, and recital performances as part of its July performance calendar.

See Schedule O for details about each sponsored artist.

4b (Code: 0) (Expenses \$ \$7,104 including grants of \$ 0) (Revenue \$ 0)

August 2012: HCL's Sponsored Artist Program Series:

HCL showcased a variety of dance, imagery, photographic, visual, operatic, theatrical, and musical performances as part of its August 2012 performance calendar.

See Schedule O for details about each sponsored artist.

4c (Code: 0) (Expenses \$ \$7,104 including grants of \$ 0) (Revenue \$ 0)

September 2012: HCL's Sponsored Artist Program Series:

HCL showcased a variety of artistic, sound, theatrical, ensemble, music, and dance performances as part of its September 2012 performance calendar.

See Schedule O for details about each sponsored artist.

4d Other program services (Describe in Schedule O.)

(Expenses \$ \$5,770 including grants of \$ 0) (Revenue \$ 0)

4e Total program service expenses **▶** \$24,114

Part IV Checklist of Required Schedules

	Yes	No
1 Is the organization described in section 501(c)(3) or 4947(a)(1) (other than a private foundation)? If "Yes," complete Schedule A	<input checked="" type="checkbox"/>	<input type="checkbox"/>
2 Is the organization required to complete Schedule B, Schedule of Contributors (see instructions)?	<input checked="" type="checkbox"/>	<input type="checkbox"/>
3 Did the organization engage in direct or indirect political campaign activities on behalf of or in opposition to candidates for public office? If "Yes," complete Schedule C, Part I	<input type="checkbox"/>	<input checked="" type="checkbox"/>
4 Section 501(c)(3) organizations. Did the organization engage in lobbying activities, or have a section 501(h) election in effect during the tax year? If "Yes," complete Schedule C, Part II	<input type="checkbox"/>	<input checked="" type="checkbox"/>
5 Is the organization a section 501(c)(4), 501(c)(5), or 501(c)(6) organization that receives membership dues, assessments, or similar amounts as defined in Revenue Procedure 98-19? If "Yes," complete Schedule C, Part III	<input type="checkbox"/>	<input checked="" type="checkbox"/>
6 Did the organization maintain any donor advised funds or any similar funds or accounts for which donors have the right to provide advice on the distribution or investment of amounts in such funds or accounts? If "Yes," complete Schedule D, Part I	<input type="checkbox"/>	<input checked="" type="checkbox"/>
7 Did the organization receive or hold a conservation easement, including easements to preserve open space, the environment, historic land areas, or historic structures? If "Yes," complete Schedule D, Part II	<input type="checkbox"/>	<input checked="" type="checkbox"/>
8 Did the organization maintain collections of works of art, historical treasures, or other similar assets? If "Yes," complete Schedule D, Part III	<input type="checkbox"/>	<input checked="" type="checkbox"/>
9 Did the organization report an amount in Part X, line 21, for escrow or custodial account liability; serve as a custodian for amounts not listed in Part X; or provide credit counseling, debt management, credit repair, or debt negotiation services? If "Yes," complete Schedule D, Part IV	<input type="checkbox"/>	<input checked="" type="checkbox"/>
10 Did the organization, directly or through a related organization, hold assets in temporarily restricted endowments, permanent endowments, or quasi-endowments? If "Yes," complete Schedule D, Part V	<input type="checkbox"/>	<input checked="" type="checkbox"/>
11 If the organization's answer to any of the following questions is "Yes," then complete Schedule D, Parts VI, VII, VIII, IX, or X as applicable.		
a Did the organization report an amount for land, buildings, and equipment in Part X, line 10? If "Yes," complete Schedule D, Part VI	<input type="checkbox"/>	<input checked="" type="checkbox"/>
b Did the organization report an amount for investments—other securities in Part X, line 12 that is 5% or more of its total assets reported in Part X, line 16? If "Yes," complete Schedule D, Part VII	<input type="checkbox"/>	<input checked="" type="checkbox"/>
c Did the organization report an amount for investments—program related in Part X, line 13 that is 5% or more of its total assets reported in Part X, line 16? If "Yes," complete Schedule D, Part VIII	<input type="checkbox"/>	<input checked="" type="checkbox"/>
d Did the organization report an amount for other assets in Part X, line 15 that is 5% or more of its total assets reported in Part X, line 16? If "Yes," complete Schedule D, Part IX	<input type="checkbox"/>	<input checked="" type="checkbox"/>
e Did the organization report an amount for other liabilities in Part X, line 25? If "Yes," complete Schedule D, Part X	<input type="checkbox"/>	<input checked="" type="checkbox"/>
f Did the organization's separate or consolidated financial statements for the tax year include a footnote that addresses the organization's liability for uncertain tax positions under FIN 48 (ASC 740)? If "Yes," complete Schedule D, Part X	<input type="checkbox"/>	<input checked="" type="checkbox"/>
12 a Did the organization obtain separate, independent audited financial statements for the tax year? If "Yes," complete Schedule D, Parts XI and XII	<input type="checkbox"/>	<input checked="" type="checkbox"/>
b Was the organization included in consolidated, independent audited financial statements for the tax year? If "Yes," and if the organization answered "No" to line 12a, then completing Schedule D, Parts XI and XII is optional	<input type="checkbox"/>	<input checked="" type="checkbox"/>
13 Is the organization a school described in section 170(b)(1)(A)(ii)? If "Yes," complete Schedule E	<input type="checkbox"/>	<input checked="" type="checkbox"/>
14 a Did the organization maintain an office, employees, or agents outside of the United States?	<input type="checkbox"/>	<input checked="" type="checkbox"/>
b Did the organization have aggregate revenues or expenses of more than \$10,000 from grantmaking, fundraising, business, investment, and program service activities outside the United States, or aggregate foreign investments valued at \$100,000 or more? If "Yes," complete Schedule F, Parts I and IV	<input type="checkbox"/>	<input checked="" type="checkbox"/>
15 Did the organization report on Part IX, column (A), line 3, more than \$5,000 of grants or assistance to any organization or entity located outside the United States? If "Yes," complete Schedule F, Parts II and IV	<input type="checkbox"/>	<input checked="" type="checkbox"/>
16 Did the organization report on Part IX, column (A), line 3, more than \$5,000 of aggregate grants or assistance to individuals located outside the United States? If "Yes," complete Schedule F, Parts III and IV	<input type="checkbox"/>	<input checked="" type="checkbox"/>
17 Did the organization report a total of more than \$15,000 of expenses for professional fundraising services on Part IX, column (A), lines 6 and 11e? If "Yes," complete Schedule G, Part I (see instructions)	<input type="checkbox"/>	<input checked="" type="checkbox"/>
18 Did the organization report more than \$15,000 total of fundraising event gross income and contributions on Part VIII, lines 1c and 8a? If "Yes," complete Schedule G, Part II	<input type="checkbox"/>	<input checked="" type="checkbox"/>
19 Did the organization report more than \$15,000 of gross income from gaming activities on Part VIII, line 9a? If "Yes," complete Schedule G, Part III	<input type="checkbox"/>	<input checked="" type="checkbox"/>
20 a Did the organization operate one or more hospital facilities? If "Yes," complete Schedule H	<input type="checkbox"/>	<input checked="" type="checkbox"/>
b If "Yes" to line 20a, did the organization attach a copy of its audited financial statements to this return?	<input type="checkbox"/>	<input checked="" type="checkbox"/>

Part IV Checklist of Required Schedules (continued)

	Yes	No
21 Did the organization report more than \$5,000 of grants and other assistance to any government or organization in the United States on Part IX, column (A), line 1? <i>If "Yes," complete Schedule I, Parts I and II</i>		✓
22 Did the organization report more than \$5,000 of grants and other assistance to individuals in the United States on Part IX, column (A), line 2? <i>If "Yes," complete Schedule I, Parts I and III</i>		✓
23 Did the organization answer "Yes" to Part VII, Section A, line 3, 4, or 5 about compensation of the organization's current and former officers, directors, trustees, key employees, and highest compensated employees? <i>If "Yes," complete Schedule J</i>		✓
24a Did the organization have a tax-exempt bond issue with an outstanding principal amount of more than \$100,000 as of the last day of the year, that was issued after December 31, 2002? <i>If "Yes," answer lines 24b through 24d and complete Schedule K. If "No," go to line 25</i>		✓
b Did the organization invest any proceeds of tax-exempt bonds beyond a temporary period exception?		✓
c Did the organization maintain an escrow account other than a refunding escrow at any time during the year to defease any tax-exempt bonds?		✓
d Did the organization act as an "on behalf of" issuer for bonds outstanding at any time during the year?		✓
25a Section 501(c)(3) and 501(c)(4) organizations. Did the organization engage in an excess benefit transaction with a disqualified person during the year? <i>If "Yes," complete Schedule L, Part I</i>		✓
b Is the organization aware that it engaged in an excess benefit transaction with a disqualified person in a prior year, and that the transaction has not been reported on any of the organization's prior Forms 990 or 990-EZ? <i>If "Yes," complete Schedule L, Part I</i>		✓
26 Was a loan to or by a current or former officer, director, trustee, key employee, highest compensated employee, or disqualified person outstanding as of the end of the organization's tax year? <i>If "Yes," complete Schedule L, Part II</i>		✓
27 Did the organization provide a grant or other assistance to an officer, director, trustee, key employee, substantial contributor or employee thereof, a grant selection committee member, or to a 35% controlled entity or family member of any of these persons? <i>If "Yes," complete Schedule L, Part III</i>		✓
28 Was the organization a party to a business transaction with one of the following parties (see Schedule L, Part IV instructions for applicable filing thresholds, conditions, and exceptions):		
a A current or former officer, director, trustee, or key employee? <i>If "Yes," complete Schedule L, Part IV</i>		✓
b A family member of a current or former officer, director, trustee, or key employee? <i>If "Yes," complete Schedule L, Part IV</i>		✓
c An entity of which a current or former officer, director, trustee, or key employee (or a family member thereof) was an officer, director, trustee, or direct or indirect owner? <i>If "Yes," complete Schedule L, Part IV</i>		✓
29 Did the organization receive more than \$25,000 in non-cash contributions? <i>If "Yes," complete Schedule M</i>		✓
30 Did the organization receive contributions of art, historical treasures, or other similar assets, or qualified conservation contributions? <i>If "Yes," complete Schedule M</i>		✓
31 Did the organization liquidate, terminate, or dissolve and cease operations? <i>If "Yes," complete Schedule N, Part I</i>		✓
32 Did the organization sell, exchange, dispose of, or transfer more than 25% of its net assets? <i>If "Yes," complete Schedule N, Part II</i>		✓
33 Did the organization own 100% of an entity disregarded as separate from the organization under Regulations sections 301.7701-2 and 301.7701-3? <i>If "Yes," complete Schedule R, Part I</i>		✓
34 Was the organization related to any tax-exempt or taxable entity? <i>If "Yes," complete Schedule R, Part II, III, or IV, and Part V, line 1</i>		✓
35a Did the organization have a controlled entity within the meaning of section 512(b)(13)?		✓
b If "Yes" to line 35a, did the organization receive any payment from or engage in any transaction with a controlled entity within the meaning of section 512(b)(13)? <i>If "Yes," complete Schedule R, Part V, line 2</i>		✓
36 Section 501(c)(3) organizations. Did the organization make any transfers to an exempt non-charitable related organization? <i>If "Yes," complete Schedule R, Part V, line 2</i>		✓
37 Did the organization conduct more than 5% of its activities through an entity that is not a related organization and that is treated as a partnership for federal income tax purposes? <i>If "Yes," complete Schedule R, Part VI</i>		✓
38 Did the organization complete Schedule O and provide explanations in Schedule O for Part VI, lines 11b and 19? Note. All Form 990 filers are required to complete Schedule O	✓	

Part V Statements Regarding Other IRS Filings and Tax Compliance

Check if Schedule O contains a response to any question in this Part V [X]

Table with columns for question number, description, and Yes/No checkboxes. Includes questions 1a through 14b regarding Form 1096, Form W-2G, backup withholding, Form W-3, unrelated business gross income, prohibited tax shelter transactions, annual gross receipts, and Section 501(c)(7), (12), (11), (4947), and (29) organizations.

Part VI Governance, Management, and Disclosure For each "Yes" response to lines 2 through 7b below, and for a "No" response to line 8a, 8b, or 10b below, describe the circumstances, processes, or changes in Schedule O. See instructions. Check if Schedule O contains a response to any question in this Part VI

Section A. Governing Body and Management

		Yes	No
1a	Enter the number of voting members of the governing body at the end of the tax year		
	If there are material differences in voting rights among members of the governing body, or if the governing body delegated broad authority to an executive committee or similar committee, explain in Schedule O.		
1b	Enter the number of voting members included in line 1a, above, who are independent		
2	Did any officer, director, trustee, or key employee have a family relationship or a business relationship with any other officer, director, trustee, or key employee?		<input checked="" type="checkbox"/>
3	Did the organization delegate control over management duties customarily performed by or under the direct supervision of officers, directors, or trustees, or key employees to a management company or other person?		<input checked="" type="checkbox"/>
4	Did the organization make any significant changes to its governing documents since the prior Form 990 was filed?		<input checked="" type="checkbox"/>
5	Did the organization become aware during the year of a significant diversion of the organization's assets?		<input checked="" type="checkbox"/>
6	Did the organization have members or stockholders?		<input checked="" type="checkbox"/>
7a	Did the organization have members, stockholders, or other persons who had the power to elect or appoint one or more members of the governing body?		<input checked="" type="checkbox"/>
7b	Are any governance decisions of the organization reserved to (or subject to approval by) members, stockholders, or persons other than the governing body?		<input checked="" type="checkbox"/>
8	Did the organization contemporaneously document the meetings held or written actions undertaken during the year by the following:		
a	The governing body?	<input checked="" type="checkbox"/>	
b	Each committee with authority to act on behalf of the governing body?	<input checked="" type="checkbox"/>	
9	Is there any officer, director, trustee, or key employee listed in Part VII, Section A, who cannot be reached at the organization's mailing address? <i>If "Yes," provide the names and addresses in Schedule O.</i>	<input checked="" type="checkbox"/>	

Section B. Policies (This Section B requests information about policies not required by the Internal Revenue Code.)

		Yes	No
10a	Did the organization have local chapters, branches, or affiliates?		<input checked="" type="checkbox"/>
10b	If "Yes," did the organization have written policies and procedures governing the activities of such chapters, affiliates, and branches to ensure their operations are consistent with the organization's exempt purposes?		
11a	Has the organization provided a complete copy of this Form 990 to all members of its governing body before filing the form?	<input checked="" type="checkbox"/>	
11b	Describe in Schedule O the process, if any, used by the organization to review this Form 990.		
12a	Did the organization have a written conflict of interest policy? <i>If "No," go to line 13</i>	<input checked="" type="checkbox"/>	
12b	Were officers, directors, or trustees, and key employees required to disclose annually interests that could give rise to conflicts?	<input checked="" type="checkbox"/>	
12c	Did the organization regularly and consistently monitor and enforce compliance with the policy? <i>If "Yes," describe in Schedule O how this was done</i>	<input checked="" type="checkbox"/>	
13	Did the organization have a written whistleblower policy?		<input checked="" type="checkbox"/>
14	Did the organization have a written document retention and destruction policy?	<input checked="" type="checkbox"/>	
15	Did the process for determining compensation of the following persons include a review and approval by independent persons, comparability data, and contemporaneous substantiation of the deliberation and decision?		
15a	The organization's CEO, Executive Director, or top management official		<input checked="" type="checkbox"/>
15b	Other officers or key employees of the organization		<input checked="" type="checkbox"/>
	If "Yes" to line 15a or 15b, describe the process in Schedule O (see instructions).		
16a	Did the organization invest in, contribute assets to, or participate in a joint venture or similar arrangement with a taxable entity during the year?		<input checked="" type="checkbox"/>
16b	If "Yes," did the organization follow a written policy or procedure requiring the organization to evaluate its participation in joint venture arrangements under applicable federal tax law, and take steps to safeguard the organization's exempt status with respect to such arrangements?		

Section C. Disclosure

- 17** List the states with which a copy of this Form 990 is required to be filed ► Illinois
- 18** Section 6104 requires an organization to make its Forms 1023 (or 1024 if applicable), 990, and 990-T (Section 501(c)(3)s only) available for public inspection. Indicate how you made these available. Check all that apply.
 Own website Another's website Upon request Other (explain in Schedule O)
- 19** Describe in Schedule O whether (and if so, how), the organization made its governing documents, conflict of interest policy, and financial statements available to the public during the tax year.
- 20** State the name, physical address, and telephone number of the person who possesses the books and records of the organization: ► Molly Feingold, 1401 W. Wabansia Ave., Chicago, IL 60642 630-430-7539

Part VII Compensation of Officers, Directors, Trustees, Key Employees, Highest Compensated Employees, and Independent Contractors

Check if Schedule O contains a response to any question in this Part VII

Section A. Officers, Directors, Trustees, Key Employees, and Highest Compensated Employees

1a Complete this table for all persons required to be listed. Report compensation for the calendar year ending with or within the organization's tax year.

- List all of the organization's **current** officers, directors, trustees (whether individuals or organizations), regardless of amount of compensation. Enter -0- in columns (D), (E), and (F) if no compensation was paid.
 - List all of the organization's **current** key employees, if any. See instructions for definition of "key employee."
 - List the organization's five **current** highest compensated employees (other than an officer, director, trustee, or key employee) who received reportable compensation (Box 5 of Form W-2 and/or Box 7 of Form 1099-MISC) of more than \$100,000 from the organization and any related organizations.
 - List all of the organization's **former** officers, key employees, and highest compensated employees who received more than \$100,000 of reportable compensation from the organization and any related organizations.
 - List all of the organization's **former directors or trustees** that received, in the capacity as a former director or trustee of the organization, more than \$10,000 of reportable compensation from the organization and any related organizations
- List persons in the following order: individual trustees or directors; institutional trustees; officers; key employees; highest compensated employees; and former such persons.

Check this box if neither the organization nor any related organization compensated any current officer, director, or trustee.

(A) Name and Title	(B) Average hours per week (list any hours for related organizations below dotted line)	(C) Position (do not check more than one box, unless person is both an officer and a director/trustee)						(D) Reportable compensation from the organization (W-2/1099-MISC)	(E) Reportable compensation from related organizations (W-2/1099-MISC)	(F) Estimated amount of other compensation from the organization and related organizations
		Individual trustee or director	Institutional trustee	Officer	Key employee	Highest compensated employee	Former			
(1) Kevin D. Simmons Chairman	10	✓		✓				0	0	0
(2) Alexis Frasz Vice Chair	1	✓		✓				0	0	0
(3) Jonathan Baskin Treasurer	1	✓		✓				0	0	0
(4) Sarah Curran Secretary	1	✓		✓				0	0	0
(5)										
(6)										
(7)										
(8)										
(9)										
(10)										
(11)										
(12)										
(13)										
(14)										

Part VII Section A. Officers, Directors, Trustees, Key Employees, and Highest Compensated Employees (continued)

(A) Name and title	(B) Average hours per week (list any hours for related organizations below dotted line)	(C) Position (do not check more than one box, unless person is both an officer and a director/trustee)						(D) Reportable compensation from the organization (W-2/1099-MISC)	(E) Reportable compensation from related organizations (W-2/1099-MISC)	(F) Estimated amount of other compensation from the organization and related organizations
		Individual trustee or director	Institutional trustee	Officer	Key employee	Highest compensated employee	Former			
(15)										
(16)										
(17)										
(18)										
(19)										
(20)										
(21)										
(22)										
(23)										
(24)										
(25)										
1b Sub-total										
c Total from continuation sheets to Part VII, Section A										
d Total (add lines 1b and 1c)							0	0	0	

2 Total number of individuals (including but not limited to those listed above) who received more than \$100,000 of reportable compensation from the organization ► **NONE**

	Yes	No
3 Did the organization list any former officer, director, or trustee, key employee, or highest compensated employee on line 1a? <i>If "Yes," complete Schedule J for such individual</i>		<input checked="" type="checkbox"/>
4 For any individual listed on line 1a, is the sum of reportable compensation and other compensation from the organization and related organizations greater than \$150,000? <i>If "Yes," complete Schedule J for such individual</i>		<input checked="" type="checkbox"/>
5 Did any person listed on line 1a receive or accrue compensation from any unrelated organization or individual for services rendered to the organization? <i>If "Yes," complete Schedule J for such person</i>		<input checked="" type="checkbox"/>

Section B. Independent Contractors

1 Complete this table for your five highest compensated independent contractors that received more than \$100,000 of compensation from the organization. Report compensation for the calendar year ending with or within the organization's tax year.

(A) Name and business address	(B) Description of services	(C) Compensation
NONE		

2 Total number of independent contractors (including but not limited to those listed above) who received more than \$100,000 of compensation from the organization ► **0**

Part VIII Statement of Revenue

Check if Schedule O contains a response to any question in this Part VIII.

			(A) Total revenue	(B) Related or exempt function revenue	(C) Unrelated business revenue	(D) Revenue excluded from tax under sections 512, 513, or 514	
Contributions, Gifts, Grants and Other Similar Amounts	1a Federated campaigns	1a 0					
	b Membership dues	1b 0					
	c Fundraising events	1c 0					
	d Related organizations	1d 0					
	e Government grants (contributions)	1e 0					
	f All other contributions, gifts, grants, and similar amounts not included above	1f \$35,472					
	g Noncash contributions included in lines 1a-1f: \$	0					
	h Total. Add lines 1a-1f ▶		\$35,472				
	Program Service Revenue	2a Business Code					
b							
c							
d							
e							
f All other program service revenue .							
g Total. Add lines 2a-2f ▶			0				
Other Revenue	3 Investment income (including dividends, interest, and other similar amounts) ▶		0				
	4 Income from investment of tax-exempt bond proceeds ▶		0				
	5 Royalties ▶		0				
	6a Gross rents	(i) Real	(ii) Personal				
		b Less: rental expenses					
		c Rental income or (loss)					
		d Net rental income or (loss) ▶		0			
	7a Gross amount from sales of assets other than inventory	(i) Securities	(ii) Other				
		b Less: cost or other basis and sales expenses					
		c Gain or (loss)					
		d Net gain or (loss) ▶		0			
	8a Gross income from fundraising events (not including \$ of contributions reported on line 1c). See Part IV, line 18 a						
		b Less: direct expenses b					
		c Net income or (loss) from fundraising events . ▶		0			
	9a Gross income from gaming activities. See Part IV, line 19 a						
b Less: direct expenses b							
c Net income or (loss) from gaming activities . . ▶			0				
10a Gross sales of inventory, less returns and allowances a							
	b Less: cost of goods sold b						
	c Net income or (loss) from sales of inventory . . ▶		0				
Miscellaneous Revenue		Business Code					
11a							
	b						
	c						
	d All other revenue						
	e Total. Add lines 11a-11d ▶		0				
12 Total revenue. See instructions. ▶		\$35,472					

Part IX Statement of Functional Expenses

Section 501(c)(3) and 501(c)(4) organizations must complete all columns. All other organizations must complete column (A).

Check if Schedule O contains a response to any question in this Part IX

Do not include amounts reported on lines 6b, 7b, 8b, 9b, and 10b of Part VIII.

	(A) Total expenses	(B) Program service expenses	(C) Management and general expenses	(D) Fundraising expenses
1 Grants and other assistance to governments and organizations in the United States. See Part IV, line 21	0	0		
2 Grants and other assistance to individuals in the United States. See Part IV, line 22	0	0		
3 Grants and other assistance to governments, organizations, and individuals outside the United States. See Part IV, lines 15 and 16	0	0		
4 Benefits paid to or for members	0	0		
5 Compensation of current officers, directors, trustees, and key employees	0	0	0	0
6 Compensation not included above, to disqualified persons (as defined under section 4958(f)(1)) and persons described in section 4958(c)(3)(B)	0	0	0	0
7 Other salaries and wages	0	0	0	0
8 Pension plan accruals and contributions (include section 401(k) and 403(b) employer contributions)	0	0	0	0
9 Other employee benefits	0	0	0	0
10 Payroll taxes	0	0	0	0
11 Fees for services (non-employees):				
a Management	\$27,204	\$18,156	\$6,048	\$3,000
b Legal	\$1,750	\$1,050	\$700	0
c Accounting	0	0	0	0
d Lobbying	0	0	0	0
e Professional fundraising services. See Part IV, line 17	0			0
f Investment management fees	0	0	0	0
g Other (If line 11g amount exceeds 10% of line 25, column (A) amount, list line 11g expenses on Schedule O.)				
12 Advertising and promotion	\$2,362	\$2,362	0	0
13 Office expenses	\$769	\$462	\$261	\$46
14 Information technology	0	0	0	0
15 Royalties	0	0	0	0
16 Occupancy	\$3,237	\$1,942	\$1,101	\$194
17 Travel	\$29	\$29	0	0
18 Payments of travel or entertainment expenses for any federal, state, or local public officials	0	0	0	0
19 Conferences, conventions, and meetings	0	0	0	0
20 Interest	\$113	\$113	0	0
21 Payments to affiliates	0	0	0	0
22 Depreciation, depletion, and amortization	0	0	0	0
23 Insurance	0	0	0	0
24 Other expenses. Itemize expenses not covered above (List miscellaneous expenses in line 24e. If line 24e amount exceeds 10% of line 25, column (A) amount, list line 24e expenses on Schedule O.)				
a				
b				
c				
d				
e All other expenses				
25 Total functional expenses. Add lines 1 through 24e	\$35,464	\$24,114	\$8,110	\$3,240
26 Joint costs. Complete this line only if the organization reported in column (B) joint costs from a combined educational campaign and fundraising solicitation. Check here <input type="checkbox"/> if following SOP 98-2 (ASC 958-720)	N/A			

Part X Balance Sheet

Check if Schedule O contains a response to any question in this Part X

		(A) Beginning of year		(B) End of year	
Assets	1 Cash—non-interest-bearing	0	1	\$8	
	2 Savings and temporary cash investments		2		
	3 Pledges and grants receivable, net		3		
	4 Accounts receivable, net		4		
	5 Loans and other receivables from current and former officers, directors, trustees, key employees, and highest compensated employees. Complete Part II of Schedule L		5		
	6 Loans and other receivables from other disqualified persons (as defined under section 4958(f)(1)), persons described in section 4958(c)(3)(B), and contributing employers and sponsoring organizations of section 501(c)(9) voluntary employees' beneficiary organizations (see instructions). Complete Part II of Schedule L		6		
	7 Notes and loans receivable, net		7		
	8 Inventories for sale or use		8		
	9 Prepaid expenses and deferred charges		9		
	10a Land, buildings, and equipment: cost or other basis. Complete Part VI of Schedule D	10a			
	b Less: accumulated depreciation	10b		10c	
	11 Investments—publicly traded securities		11		
	12 Investments—other securities. See Part IV, line 11		12		
	13 Investments—program-related. See Part IV, line 11		13		
	14 Intangible assets		14		
	15 Other assets. See Part IV, line 11		15		
16 Total assets. Add lines 1 through 15 (must equal line 34)		0	16	\$8	
Liabilities	17 Accounts payable and accrued expenses		17		
	18 Grants payable		18		
	19 Deferred revenue		19		
	20 Tax-exempt bond liabilities		20		
	21 Escrow or custodial account liability. Complete Part IV of Schedule D		21		
	22 Loans and other payables to current and former officers, directors, trustees, key employees, highest compensated employees, and disqualified persons. Complete Part II of Schedule L		22		
	23 Secured mortgages and notes payable to unrelated third parties		23		
	24 Unsecured notes and loans payable to unrelated third parties		24		
	25 Other liabilities (including federal income tax, payables to related third parties, and other liabilities not included on lines 17-24). Complete Part X of Schedule D		25		
	26 Total liabilities. Add lines 17 through 25		0	26	0
Net Assets or Fund Balances	Organizations that follow SFAS 117 (ASC 958), check here <input type="checkbox"/> and complete lines 27 through 29, and lines 33 and 34.				
	27 Unrestricted net assets		27		
	28 Temporarily restricted net assets		28		
	29 Permanently restricted net assets		29		
	Organizations that do not follow SFAS 117 (ASC 958), check here <input type="checkbox"/> and complete lines 30 through 34.				
	30 Capital stock or trust principal, or current funds		30		
	31 Paid-in or capital surplus, or land, building, or equipment fund		31		
	32 Retained earnings, endowment, accumulated income, or other funds		32		
33 Total net assets or fund balances		0	33	0	
34 Total liabilities and net assets/fund balances		0	34	\$8	

Part XI Reconciliation of Net Assets

Check if Schedule O contains a response to any question in this Part XI

1	Total revenue (must equal Part VIII, column (A), line 12)	1	\$35,472
2	Total expenses (must equal Part IX, column (A), line 25)	2	\$35,464
3	Revenue less expenses. Subtract line 2 from line 1	3	\$8
4	Net assets or fund balances at beginning of year (must equal Part X, line 33, column (A))	4	0
5	Net unrealized gains (losses) on investments	5	0
6	Donated services and use of facilities	6	0
7	Investment expenses	7	0
8	Prior period adjustments	8	0
9	Other changes in net assets or fund balances (explain in Schedule O)	9	0
10	Net assets or fund balances at end of year. Combine lines 3 through 9 (must equal Part X, line 33, column (B))	10	8

Part XII Financial Statements and Reporting

Check if Schedule O contains a response to any question in this Part XII

- 1** Accounting method used to prepare the Form 990: Cash Accrual Other _____
 If the organization changed its method of accounting from a prior year or checked "Other," explain in Schedule O.
- 2a** Were the organization's financial statements compiled or reviewed by an independent accountant? . . .
 If "Yes," check a box below to indicate whether the financial statements for the year were compiled or reviewed on a separate basis, consolidated basis, or both:
 Separate basis Consolidated basis Both consolidated and separate basis
- b** Were the organization's financial statements audited by an independent accountant?
 If "Yes," check a box below to indicate whether the financial statements for the year were audited on a separate basis, consolidated basis, or both:
 Separate basis Consolidated basis Both consolidated and separate basis
- c** If "Yes" to line 2a or 2b, does the organization have a committee that assumes responsibility for oversight of the audit, review, or compilation of its financial statements and selection of an independent accountant?
 If the organization changed either its oversight process or selection process during the tax year, explain in Schedule O.
- 3a** As a result of a federal award, was the organization required to undergo an audit or audits as set forth in the Single Audit Act and OMB Circular A-133?
- b** If "Yes," did the organization undergo the required audit or audits? If the organization did not undergo the required audit or audits, explain why in Schedule O and describe any steps taken to undergo such audits

	Yes	No
2a		✓
2b		✓
2c		
3a		✓
3b		

SCHEDULE A
(Form 990 or 990-EZ)

Public Charity Status and Public Support

OMB No 1545-0047

2012

Open to Public Inspection

Department of the Treasury
Internal Revenue Service

Complete if the organization is a section 501(c)(3) organization or a section 4947(a)(1) nonexempt charitable trust.

▶ Attach to Form 990 or Form 990-EZ. ▶ See separate instructions.

Name of the organization

Employer identification number

High Concept Laboratories, NFP

45-0797377

Part I Reason for Public Charity Status (All organizations must complete this part.) See instructions.

The organization is not a private foundation because it is: (For lines 1 through 11, check only one box.)

- 1 A church, convention of churches, or association of churches described in **section 170(b)(1)(A)(i).**
- 2 A school described in **section 170(b)(1)(A)(ii).** (Attach Schedule E.)
- 3 A hospital or a cooperative hospital service organization described in **section 170(b)(1)(A)(iii).**
- 4 A medical research organization operated in conjunction with a hospital described in **section 170(b)(1)(A)(iii).** Enter the hospital's name, city, and state:
- 5 An organization operated for the benefit of a college or university owned or operated by a governmental unit described in **section 170(b)(1)(A)(iv).** (Complete Part II.)
- 6 A federal, state, or local government or governmental unit described in **section 170(b)(1)(A)(v).**
- 7 An organization that normally receives a substantial part of its support from a governmental unit or from the general public described in **section 170(b)(1)(A)(vi).** (Complete Part II.)
- 8 A community trust described in **section 170(b)(1)(A)(vi).** (Complete Part II.)
- 9 An organization that normally receives: (1) more than 33 1/3% of its support from contributions, membership fees, and gross receipts from activities related to its exempt functions—subject to certain exceptions, and (2) no more than 33 1/3% of its support from gross investment income and unrelated business taxable income (less section 511 tax) from businesses acquired by the organization after June 30, 1975. See **section 509(a)(2).** (Complete Part III.)
- 10 An organization organized and operated exclusively to test for public safety. See **section 509(a)(4).**
- 11 An organization organized and operated exclusively for the benefit of, to perform the functions of, or to carry out the purposes of one or more publicly supported organizations described in section 509(a)(1) or section 509(a)(2). See **section 509(a)(3).** Check the box that describes the type of supporting organization and complete lines 11e through 11h.
 - a Type I b Type II c Type III—Functionally integrated d Type III—Non-functionally integrated
 - e By checking this box, I certify that the organization is not controlled directly or indirectly by one or more disqualified persons other than foundation managers and other than one or more publicly supported organizations described in section 509(a)(1) or section 509(a)(2).
 - f If the organization received a written determination from the IRS that it is a Type I, Type II, or Type III supporting organization, check this box
 - g Since August 17, 2006, has the organization accepted any gift or contribution from any of the following persons?
 - (i) A person who directly or indirectly controls, either alone or together with persons described in (ii) and (iii) below, the governing body of the supported organization?

	Yes	No
11g(i)		
 - (ii) A family member of a person described in (i) above?

	Yes	No
11g(ii)		
 - (iii) A 35% controlled entity of a person described in (i) or (ii) above?

	Yes	No
11g(iii)		
 - h Provide the following information about the supported organization(s).

(i) Name of supported organization	(ii) EIN	(iii) Type of organization (described on lines 1–9 above or IRC section (see instructions))	(iv) Is the organization in col (i) listed in your governing document?		(v) Did you notify the organization in col (i) of your support?		(vi) Is the organization in col (i) organized in the U S ?		(vii) Amount of monetary support
			Yes	No	Yes	No	Yes	No	
(A)									
(B)									
(C)									
(D)									
(E)									
Total									

Part II Support Schedule for Organizations Described in Sections 170(b)(1)(A)(iv) and 170(b)(1)(A)(vi)

(Complete only if you checked the box on line 5, 7, or 8 of Part I or if the organization failed to qualify under Part III. If the organization fails to qualify under the tests listed below, please complete Part III.)

Section A. Public Support

Calendar year (or fiscal year beginning in) ▶	(a) 2008	(b) 2009	(c) 2010	(d) 2011	(e) 2012	(f) Total
1 Gifts, grants, contributions, and membership fees received. (Do not include any "unusual grants.")					\$35,472	\$35,472
2 Tax revenues levied for the organization's benefit and either paid to or expended on its behalf					0	0
3 The value of services or facilities furnished by a governmental unit to the organization without charge					0	0
4 Total. Add lines 1 through 3					\$35,472	\$35,472
5 The portion of total contributions by each person (other than a governmental unit or publicly supported organization) included on line 1 that exceeds 2% of the amount shown on line 11, column (f)						\$33,777
6 Public support. Subtract line 5 from line 4.						\$1,695

Section B. Total Support

Calendar year (or fiscal year beginning in) ▶	(a) 2008	(b) 2009	(c) 2010	(d) 2011	(e) 2012	(f) Total
7 Amounts from line 4					\$35,472	\$35,472
8 Gross income from interest, dividends, payments received on securities loans, rents, royalties and income from similar sources					0	0
9 Net income from unrelated business activities, whether or not the business is regularly carried on					0	0
10 Other income. Do not include gain or loss from the sale of capital assets (Explain in Part IV.)					0	0
11 Total support. Add lines 7 through 10						\$35,472
12 Gross receipts from related activities, etc. (see instructions)					12	
13 First five years. If the Form 990 is for the organization's first, second, third, fourth, or fifth tax year as a section 501(c)(3) organization, check this box and stop here ▶ <input checked="" type="checkbox"/>						

Section C. Computation of Public Support Percentage

14 Public support percentage for 2012 (line 6, column (f) divided by line 11, column (f))	14	%
15 Public support percentage from 2011 Schedule A, Part II, line 14	15	%
16a 33 1/3% support test—2012. If the organization did not check the box on line 13, and line 14 is 33 1/3% or more, check this box and stop here. The organization qualifies as a publicly supported organization ▶ <input type="checkbox"/>		
b 33 1/3% support test—2011. If the organization did not check a box on line 13 or 16a, and line 15 is 33 1/3% or more, check this box and stop here. The organization qualifies as a publicly supported organization ▶ <input type="checkbox"/>		
17a 10%-facts-and-circumstances test—2012. If the organization did not check a box on line 13, 16a, or 16b, and line 14 is 10% or more, and if the organization meets the "facts-and-circumstances" test, check this box and stop here. Explain in Part IV how the organization meets the "facts-and-circumstances" test. The organization qualifies as a publicly supported organization ▶ <input type="checkbox"/>		
b 10%-facts-and-circumstances test—2011. If the organization did not check a box on line 13, 16a, 16b, or 17a, and line 15 is 10% or more, and if the organization meets the "facts-and-circumstances" test, check this box and stop here. Explain in Part IV how the organization meets the "facts-and-circumstances" test. The organization qualifies as a publicly supported organization ▶ <input type="checkbox"/>		
18 Private foundation. If the organization did not check a box on line 13, 16a, 16b, 17a, or 17b, check this box and see instructions ▶ <input type="checkbox"/>		

Part III Support Schedule for Organizations Described in Section 509(a)(2)

(Complete only if you checked the box on line 9 of Part I or if the organization failed to qualify under Part II. If the organization fails to qualify under the tests listed below, please complete Part II.)

Section A. Public Support

Calendar year (or fiscal year beginning in) ►	(a) 2008	(b) 2009	(c) 2010	(d) 2011	(e) 2012	(f) Total
1 Gifts, grants, contributions, and membership fees received. (Do not include any "unusual grants.")						
2 Gross receipts from admissions, merchandise sold or services performed, or facilities furnished in any activity that is related to the organization's tax-exempt purpose						
3 Gross receipts from activities that are not an unrelated trade or business under section 513						
4 Tax revenues levied for the organization's benefit and either paid to or expended on its behalf						
5 The value of services or facilities furnished by a governmental unit to the organization without charge						
6 Total. Add lines 1 through 5						
7a Amounts included on lines 1, 2, and 3 received from disqualified persons						
b Amounts included on lines 2 and 3 received from other than disqualified persons that exceed the greater of \$5,000 or 1% of the amount on line 13 for the year						
c Add lines 7a and 7b						
8 Public support. (Subtract line 7c from line 6.)						

Section B. Total Support

Calendar year (or fiscal year beginning in) ►	(a) 2008	(b) 2009	(c) 2010	(d) 2011	(e) 2012	(f) Total
9 Amounts from line 6						
10a Gross income from interest, dividends, payments received on securities loans, rents, royalties and income from similar sources						
b Unrelated business taxable income (less section 511 taxes) from businesses acquired after June 30, 1975						
c Add lines 10a and 10b						
11 Net income from unrelated business activities not included in line 10b, whether or not the business is regularly carried on						
12 Other income. Do not include gain or loss from the sale of capital assets (Explain in Part IV.)						
13 Total support. (Add lines 9, 10c, 11, and 12.)						
14 First five years. If the Form 990 is for the organization's first, second, third, fourth, or fifth tax year as a section 501(c)(3) organization, check this box and stop here <input type="checkbox"/>						

Section C. Computation of Public Support Percentage

15 Public support percentage for 2012 (line 8, column (f) divided by line 13, column (f))	15	%
16 Public support percentage from 2011 Schedule A, Part III, line 15	16	%

Section D. Computation of Investment Income Percentage

17 Investment income percentage for 2012 (line 10c, column (f) divided by line 13, column (f))	17	%
18 Investment income percentage from 2011 Schedule A, Part III, line 17	18	%

- 19a 33 1/3% support tests—2012.** If the organization did not check the box on line 14, and line 15 is more than 33 1/3%, and line 17 is not more than 33 1/3%, check this box and **stop here**. The organization qualifies as a publicly supported organization
- b 33 1/3% support tests—2011.** If the organization did not check a box on line 14 or line 19a, and line 16 is more than 33 1/3%, and line 18 is not more than 33 1/3%, check this box and **stop here**. The organization qualifies as a publicly supported organization
- 20 Private foundation.** If the organization did not check a box on line 14, 19a, or 19b, check this box and see instructions

Part IV **Supplemental Information.** Complete this part to provide the explanations required by Part II, line 10; Part II, line 17a or 17b; and Part III, line 12. Also complete this part for any additional information. (See instructions).

SCHEDULE L
(Form 990 or 990-EZ)

Department of the Treasury
Internal Revenue Service

Transactions With Interested Persons

▶ Complete if the organization answered
"Yes" on Form 990, Part IV, line 25a, 25b, 26, 27, 28a, 28b, or 28c,
or Form 990-EZ, Part V, line 38a or 40b.
▶ Attach to Form 990 or Form 990-EZ. ▶ See separate instructions.

OMB No 1545-0047

2012

Open To Public Inspection

Name of the organization: **High Concept Laboratories, NFP** Employer identification number: **45-0797377**

Part I Excess Benefit Transactions (section 501(c)(3) and section 501(c)(4) organizations only).
Complete if the organization answered "Yes" on Form 990, Part IV, line 25a or 25b, or Form 990-EZ, Part V, line 40b.

1	(a) Name of disqualified person	(b) Relationship between disqualified person and organization	(c) Description of transaction	(d) Corrected?	
				Yes	No
(1)					
(2)					
(3)					
(4)					
(5)					
(6)					

2 Enter the amount of tax incurred by the organization managers or disqualified persons during the year under section 4958. ▶ \$ _____

3 Enter the amount of tax, if any, on line 2, above, reimbursed by the organization ▶ \$ _____

Part II Loans to and/or From Interested Persons.
Complete if the organization answered "Yes" on Form 990-EZ, Part V, line 38a or Form 990, Part IV, line 26; or if the organization reported an amount on Form 990, Part X, line 5, 6, or 22.

1	(a) Name of interested person	(b) Relationship with organization	(c) Purpose of loan	(d) Loan to or from the organization?		(e) Original principal amount	(f) Balance due	(g) In default?		(h) Approved by board or committee?		(i) Written agreement?		
				To	From			Yes	No	Yes	No	Yes	No	
														Yes
(1)														
(2)														
(3)														
(4)														
(5)														
(6)														
(7)														
(8)														
(9)														
(10)														
Total							▶ \$ _____							

Part III Grants or Assistance Benefiting Interested Persons.
Complete if the organization answered "Yes" on Form 990, Part IV, line 27.

1	(a) Name of interested person	(b) Relationship between interested person and the organization	(c) Amount of assistance	(d) Type of assistance	(e) Purpose of assistance
(1)					
(2)					
(3)					
(4)					
(5)					
(6)					
(7)					
(8)					
(9)					
(10)					

SCHEDULE O
(Form 990 or 990-EZ)

Supplemental Information to Form 990 or 990-EZ

OMB No 1545-0047

2012

Open to Public Inspection

Department of the Treasury
Internal Revenue Service

Complete to provide information for responses to specific questions on
Form 990 or 990-EZ or to provide any additional information.

▶ Attach to Form 990 or 990-EZ.

Name of the organization

High Concept Laboratories, NFP

Employer identification number

45-0797377

Part III. Statement of Program Service Accomplishments

4a See attachments for July 2012 performances

4b See attachments for August 2012 performances

4c See attachments for September 2012 performances

Part VI. Section B (Policies) Governance, Management & Disclosure

Line 15a: Only the HCL board of directors can approve a salary for Kevin D. Simmons, Chair/Officer of HCL. Salary considerations are based on performance, and comparability concerning compensation paid to comparable exempt organizations. Mr. Simmons has no vote or influence on the amount of his compensation. the remaing Board members must meet a consensus before recommending a salary for Mr. Simmons.

Line 12 a: HCL has adopted a strict policy concerning conflict of interest, a copy of which is enclosed.



home / 2012 / july

MONTHLY ARCHIVES: JULY 2012



THE NEW WEBSITE

After months of work, the new High Concept Laboratories Website is here! The design is cleaner, information is easier to access and the blog has been integrated. It's your one-stop shop for everything related to HCL. Please poke around, explore, learn and engage! We hope you enjoy it as much as we do. If you ...Continue Reading



PEOPLE'S MUSIC SCHOOL AND NEW MILLENNIUM ORCHESTRA

The New Millennium Orchestra, in collaboration with High Concept Laboratories, partnered with the People's Music School to develop a program to further enrich students' musical experience and training. Mirroring the People's Music School's strong focus on students' technical achievement and social growth, the New Millennium Orchestra's Professional Mentorship Program provides students with opportunities for musical ...Continue Reading



LONI DIEP

sponsored project: storyteller Lit only by the glow of a campfire, our ancestors employed costume, music, and movement to create and carry forth inter-generational traditions of storytelling. As forms of narrative consumption changed – with firelight giving way to lamplight and the predominance of the printed page – so too have opportunities for communal, interactive ...Continue Reading



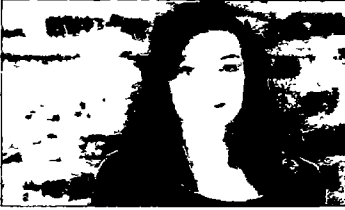
KATHARINE HAWTHORNE AND CHRISTOPHER JETTE

Sponsored project: SoundLines SoundLines is a performance installation that maps movement to sound. A grayscale version of a live video matrix is read in two changing horizontal positions. These lines become waveforms forming the basis for the scored sound improvisation. The dancer's movements change the waveform, shaping pitch and timbre. Just as a guitar string ...Continue Reading



MOLLY SHANAHAN/ MAD SHAK

Sponsored Project: Stamina of a Curiosity Stamina of Curiosity is Molly Shanahan's current three-year project including solo and ensemble movement research and multiple performance iterations. Shanahan is further refining her singular approach to movement, which challenges contemporary notions of fitness and physique. Stamina will allow Shanahan and her collaborators to explore how the body's inherent ...Continue Reading



KASEY FOSTER

Project Title: Assignment #403 Assignment #403 is a piece set to the tunes of local band Impossible Recording Machine. Movement Foster, video by Joe Lewis, and shadow puppetry by Sam Polce, tell the story of two humans, who with the relentless assistance of unseen, unknown friends, find each other after great pain and boredom. As ...Continue Reading



MONICA THOMAS

3 Dance Films In collaboration with filmmakers Chris Adamescu and Adam Tanguay, Monica Thomas presents the premiere of three short dance films. Each piece exhibits a different approach to dance film, showing opposing perspectives to the creative process and the process of collaboration between dancer, choreographer, and filmmaker. The films: I Am Not An Animal ...Continue Reading

[← Older posts](#)

ARCHIVES

Select Month



Search for:

Search



ADAM ROSE

curator, ecology/technology dance series Adam Rose will be curating a performance series on the theme "Ecology/Technology," featuring Smiley Thims, Charles Mahaffee, Carole McCurdy and others, to be presented in late summer. Adam is also collaborating with Jose Hernandez to create a new Antibody Dance work to be premiered at HCL, 100 Sigils (working title). 100 ...Continue Reading



OPERA CABAL

Sponsored Project: OPERA SHOP Opera Cabal has invited video designer, producer, composer and all-around technical whiz Alexander Overington to work with virtuoso cellist and singer, Teddy Rankin-Parker. Overington and Rankin-Parker first established a reputation when they toured as the opening act for Grammy Award-winning ensemble, eighth blackbird. Recognizing their explosive potential, Opera Cabal commissioned ... Continue Reading



G. VINCENT GAULIN

Project Title: IS THIS YOU, WANT? Gaulin will be continuing a series of "slow plays" called IS THIS YOU, WANT? The first play in the series "POPULATION" is a retelling of the Three Bears story where DISCIPLINE BEAR, ETIQUETTE BEAR, and PLEASURE BEAR (sans Goldilocks) are stumbling into the burdens of person-hood. Its depiction of ... Continue Reading



home / 2012 / august

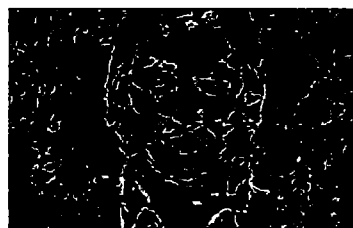
MONTHLY ARCHIVES: AUGUST 2012

PAVEMENT GROUP

Pavement Group commits itself to providing dynamic performance opportunities for the next generation of theatre artists, arts managers, and audiences. We dedicate ourselves to new plays. Pavement Group endeavors to make contact with an audience previously unspoken to. We strive to lay the foundation—both pragmatic and institutional—that fosters fresh plays and makes contact with new .. Continue Reading

MOLLY JAEGER

Dance Molly is a performing artist in dance theater. Her performance practice is grounded in the techniques developed by pioneering teacher, Scott Kelman, with whom she studied intensively from 2001-2004, before branching off to devise her own work. Previously, her efforts have been focused on developing ensemble improvisational techniques, which she performed in around public ...Continue Reading



GLEN JENNINGS

Occult Videography Occult Videography will be using the medium of digital video and photography to explore the mysticism of occult imagery. Through the exploration of various video techniques including graphics, green screening, time lapsing and light writing he hopes to create a style that is a macabre techno-noir under the guise of “music videos.” The ...Continue Reading



J. THOMAS PALLAS

visual arts J. Thomas Pallas' work will explore the line between commercial imagery, such as advertising, and community empowerment through new bodies of work in printmaking, drawing, and collage. The imagery he will be using is an amalgamation of personal photos and advertising images from the 70s and 80s in an effort to mine notions ...Continue Reading



NEW BEAST THEATRE WORKS

music/theater- Light Waves and Their Uses New Beast Theatre Works' newest semi-opera explores the life of scientist Albert Michelson. Michelson, famous for his measurement of the velocity of light, was infamous for a devotion to his work that caused him to neglect himself and his family, and which ultimately led to his institutionalization. With a ...Continue Reading



FIFTH HOUSE ENSEMBLE

Music- The Weaver's Tales A Unique Twist on Grimm's Fairytales, The Weaver's Tales Incorporates Music, Storytelling and a Feast for the Eyes in Physical Theater and Fashion Design. The Weaver's Tales is a unique multi-media theatrical adventure that seamlessly weaves together three storylines by combining fairy tales, physical theater, dance, high fashion and music, in ...Continue Reading



CONGO SQUARE THEATER

theater- Brothers of the Dust Set in rural Kansas, Brothers of The Dust, a new play written by Darren Canady, chronicles the homecoming of two brothers returning to the family farm to stake their claim to share of farm land that has been in the family for generations, and maintained by their oldest sibling Roy. ...Continue Reading



JOE MILLER

Year-long Artist-In-Residence in Visual Art Chicago native Joe Miller is a visual artist with a primary focus in painting and drawing. Through collaborations with city officials, journalists, filmmakers, homeless and you, Miller examines the city structures and mediums that mediate our not-so-everyday perception of the city's political and economic operations. Recent projects include: The Empty ...Continue Reading



JEREMY BESSOFF

Artist-In-Residence in Video/Film Jeremy Bessoff breathes life into his images and sculptures with the magic of motion-picture technology. He is interested in documenting the secret communication that goes on between inanimate objects. Certain objects, whether found or created, can be imbued with or already exude a certain esoteric memory. It is this ready-made history that ...Continue Reading



KATE RANEY

The Cleo Project Kate's films and videos investigate issues of identity, gender and self. In The Cleo Project, multiple women perform the same scene from Agnes Varda's film Cleo From 5 to 7. Each actress receives

direction and adjustments on-set as "Action" is called, while cameras document performer and director alike. Combining video, film and ...Continue Reading

[← Older posts](#)

ARCHIVES

Select Month



Search for:

Search

© High Concept Laboratories 2012

[Back to top](#)



home / 2012 / september

MONTHLY ARCHIVES: SEPTEMBER 2012



SARA BLACK & JILLIAN SOTO AT HYDE PARK ART CENTER

Check out Sara Black and Jillian Soto's contribution at the Hyde Park Art Center open now until January 6. From the Hyde Park Art center website: "The exhibition Two Histories of the World, on view at the Hyde Park Art Center from September 16, 2012 until January 6, 2013, features the works of five artists ...Continue Reading



MAJOR SOUND SERIES

This season, HCL has invited three music ensembles to develop their work in a series of workshop showings centered around the exploration and presentation of new sound. Combining elements of installation, video, sculpture, electronics and movement, each of these artist, in their own way, seeks to uncover unique territories that engage the listener in a . Continue Reading



ANNOUNCING OUR FALL 2012 LINEUP

Theatre 7 of Chicago Theatre Seven of Chicago will be in residence at High Concept Labs for its entire 2012-13 season. The award-winning company's seventh season includes four new-to-Chicago plays which explore the diverse Chicago experience, a monthly reading series and other auxiliary programming. In November, the company opens *American Storm*, a Chicago premiere from ...Continue Reading



STEPHEN GORBOS AND SPEKTRAL QUARTET

Music- STRING QUARTET No. 1, for the Spektral Quartet Stephen Gorbos plans to compose a new string quartet for the Chicago-based Spektral Quartet. The piece will feature the quartet, one of HCL's current sponsored artists, and electronic sounds recorded around the city of Chicago. In his recent works for instruments and electronics, Stephen often draws ...Continue Reading



CHICAGO Q ENSEMBLE

Community Arts Partnership: Chicago Q Ensemble In this community arts partnership residency, Chicago Q Ensemble will work together with HCL staff to develop programming that fosters a deeper connection between the ensemble and its community in Chicago. This programming will aim to develop connections with ordinary Chicagoans — who may not consider themselves fans of ...Continue Reading



NICOLE LEGETTE

Dance: Of Marrow, Moonlight & Mirth Existing somewhere between performance art and dance- unclaimed by either- Of Marrow, Moonlight & Mirth is an immersive, sensory rich, destabilized dream-world investigation of the illusory nature of the fixed Self, presented in three vignettes. The ever shifting, fluidity of 'I' makes an unreliable protagonist in a disruptive narrative ...Continue Reading



GOOD WILLSMITH

I am not involved at all, and I cannot stop Part of the Major Sound Series Good Willsmith will use their time at HCL to explore the physical, temporal and referential properties of sound, by designing and executing live performances within a series of thematic structures. Because the group's sound is rooted in seemingly "static" . Continue Reading



SOUND ROOM

Part of the Major Sound Series Sound Room is a collaboration between Chicago based composers/ sound artists Kyle Vegter, Ryan Ingebritsen, and Daniel Dehaan. Using custom built software and a complex, multi-channel speaker system they will create a unique and intuitive three dimensional sound spatialization system, specifically tuned to the acoustic nuances of the High . Continue Reading



MONICA WESTIN

Sponsored Scholar Monica will be working with HCL's artists in residence this fall to produce catalog essays for the HCL yearbook that reflect themes and threads suggested and explored by the various sponsored art projects. She is particularly interested in the different potential methods of collaborating with the artists on these essays, and she will ...Continue Reading



SARA BLACK & JILLIAN SOTO

Visual Arts During their residency at HCL, Black and Soto will complete the second part of a two part experimental exhibition entitled Two Histories of the World curated by local independent curator Karsten Lund. This exhibition began one year ago at a former Chicago factory, an immense structure in partial disrepair that became home to a large resale ...Continue Reading

[← Older posts](#)

ARCHIVES

Select Month

Search for:

Conflict of Interest Policy - High Concept Laboratories NFP

Article I Purpose

The purpose of the conflict of interest policy is to protect this tax-exempt organization's (High Concept Laboratories NFP) interest when it is contemplating entering into a transaction or arrangement that might benefit the private interest of an officer or director of the Organization or might result in a possible excess benefit transaction. This policy is intended to supplement but not replace any applicable state and federal laws governing conflict of interest applicable to nonprofit and charitable organizations.

Article II Definitions

1. Interested Person

Any director, principal officer, or member of a committee with governing board delegated powers, who has a direct or indirect financial interest, as defined below, is an interested person.

2. Financial Interest

A person has a financial interest if the person has, directly or indirectly, through business, investment, or family:

- a. An ownership or investment interest in any entity with which the Organization has a transaction or arrangement,
- b. A compensation arrangement with the Organization or with any entity or individual with which the Organization has a transaction or arrangement, or
- c. A potential ownership or investment interest in, or compensation arrangement with, any entity or individual with which the Organization is negotiating a transaction or arrangement.

Compensation includes direct and indirect remuneration as well as gifts or favors that are not insubstantial.

A financial interest is not necessarily a conflict of interest. Under Article III, Section 2, a person who has a financial interest may have a conflict of interest only if the appropriate governing board or committee decides that a conflict of interest exists.

Article III Procedures

1. Duty to Disclose

In connection with any actual or possible conflict of interest, an interested person must disclose the existence of the financial interest and be given the opportunity to disclose all material facts to the directors and members of committees with governing board delegated powers considering the proposed transaction or arrangement.

2. Determining Whether a Conflict of Interest Exists

After disclosure of the financial interest and all material facts, and after any discussion with the interested person, he/she shall leave the governing board or committee meeting while the determination of a conflict of interest is discussed and voted upon. The remaining board or committee members shall decide if a conflict of interest exists.

3. Procedures for Addressing the Conflict of Interest

- a. An interested person may make a presentation at the governing board or committee meeting, but after the presentation, he/she shall leave the meeting during the discussion of, and the vote on, the transaction or arrangement involving the possible conflict of interest.
- b. The chairperson of the governing board or committee shall, if appropriate, appoint a disinterested person or committee to investigate alternatives to the proposed transaction or arrangement.
- c. After exercising due diligence, the governing board or committee shall determine whether the Organization can obtain with reasonable efforts a more advantageous transaction or arrangement from a person or entity that would not give rise to a conflict of interest.
- d. If a more advantageous transaction or arrangement is not reasonably possible under circumstances not producing a conflict of interest, the governing board or committee shall determine by a majority vote of the disinterested directors whether the transaction or arrangement is in the Organization's best interest, for its own benefit, and whether it is fair and reasonable. In conformity with the above determination it shall make its decision as to whether to enter into the transaction or arrangement.

4. Violations of the Conflicts of Interest Policy

- a. If the governing board or committee has reasonable cause to believe a member has failed to disclose actual or possible conflicts of interest, it shall inform the member of the basis for such belief and afford the member an opportunity to explain the alleged failure to disclose.
- b. If, after hearing the member's response and after making further investigation as warranted by the circumstances, the governing board or committee determines the member has failed to disclose an actual or possible conflict of interest, it shall take appropriate disciplinary and corrective action

Article IV **Records of Proceedings**

The minutes of the governing board and all committees with board delegated powers shall contain:

- a. The names of the persons who disclosed or otherwise were found to have a financial interest in connection with an actual or possible conflict of interest, the nature of the financial interest, any action taken to determine whether a conflict of interest was present, and the governing board's or committee's decision as to whether a conflict of interest in fact existed.
- b. The names of the persons who were present for discussions and votes relating to the transaction or arrangement, the content of the discussion, including any alternatives to the proposed transaction or arrangement, and a record of any votes taken in connection with the proceedings.

Article V **Compensation**

- a. A voting member of the governing board who receives compensation, directly or indirectly, from the Organization for services is precluded from voting on matters pertaining to that member's compensation.
- b. A voting member of any committee whose jurisdiction includes compensation matters and who receives compensation, directly or indirectly, from the Organization for services is precluded from voting on matters pertaining to that member's compensation.
- c. No voting member of the governing board or any committee whose jurisdiction includes compensation matters and who receives compensation, directly or indirectly, from the Organization, either individually or collectively, is prohibited from providing information to any committee regarding compensation.

Article VI **Annual Statements**

Each director, principal officer and member of a committee with governing board delegated powers shall annually sign a statement which affirms such person:

- a. Has received a copy of the conflicts of interest policy,
- b. Has read and understands the policy,
- c. Has agreed to comply with the policy, and
- d. Understands the Organization is charitable and in order to maintain its federal tax exemption it must engage primarily in activities which accomplish one or more of its tax-exempt purposes.

Article VII **Periodic Reviews**

To ensure the Organization operates in a manner consistent with charitable purposes and does not engage in activities that could jeopardize its tax-exempt status, periodic reviews shall be conducted. The periodic reviews shall, at a minimum, include the following subjects

- a. Whether compensation arrangements and benefits are reasonable, based on competent survey information, and the result of arm's length bargaining.
- b. Whether partnerships, joint ventures, and arrangements with management organizations conform to the Organization's written policies, are properly recorded, reflect reasonable investment or payments for goods and services, further charitable purposes and do not result in inurement, impermissible private benefit or in an excess benefit transaction.

Article VIII **Use of Outside Experts**

When conducting the periodic reviews as provided for in Article VII, the Organization may, but need not, use outside advisors. If outside experts are used, their use shall not relieve the governing board of its responsibility for ensuring periodic reviews are conducted.