



See a Social Security Number? Say Something!
Report Privacy Problems to <https://public.resource.org/privacy>
Or call the IRS Identity Theft Hotline at 1-800-908-4490



Return of Organization Exempt From Income Tax

Under section 501(c), 527, or 4947(a)(1) of the Internal Revenue Code (except black lung benefit trust or private foundation)

2011

Open to Public Inspection

Department of the Treasury
Internal Revenue Service

▶ The organization may have to use a copy of this return to satisfy state reporting requirements

A For the 2011 calendar year, or tax year beginning Oct 1, 2011, and ending Sep 30, 2012

B Check if applicable:
 Address change
 Name change
 Initial return
 Terminated
 Amended return
 Application pending

C Name of organization **MID STATE DEVELOPMENT CORPORATION**
 Doing Business As
 Number and street (or P O box if mail is not delivered to street addr) Room/suite
1631 17th STREET 100
 City, town or country State ZIP code + 4
BAKERSFIELD CA 93301

D Employer Identification Number
95-3507734

E Telephone number
(661) 322-4241

G Gross receipts \$ 713,370.

F Name and address of principal officer
KEITH BRICE 1631 17TH STREET SUITE BAKERSFIELD CA 93309

H(a) Is this a group return for affiliates? Yes No
H(b) Are all affiliates included? Yes No
 If 'No,' attach a list (see instructions)

I Tax-exempt status 501(c)(3) 501(c) (4) (insert no) 4947(a)(1) or 527

J Website: ▶ **MSDCDC.ORG**

K Form of organization Corporation Trust Association Other ▶

L Year of Formation **1980** **M State of legal domicile** **CA**

H(c) Group exemption number ▶

Part I Summary

1 Briefly describe the organization's mission or most significant activities **CREATE JOBS AND STIMULATE ECONOMIC GROWTH**

2 Check this box if the organization discontinued its operations or disposed of more than 25% of its net assets

3 Number of voting members of the governing body (Part VI, line 1a)	3	18
4 Number of independent voting members of the governing body (Part VI, line 1b)	4	18
5 Total number of individuals employed in calendar year 2011 (Part V, line 2a)	5	5
6 Total number of volunteers (estimate if necessary)	6	18
7a Total unrelated business revenue from Part VIII, column (C), line 12	7a	0.
7b Net unrelated business taxable income from Form 990-T, line 34	7b	

	Prior Year	Current Year
8 Contributions and grants (Part VIII, line 1h)		
9 Program service revenue (Part VIII, line 2g)	764,470.	709,970.
10 Investment income (Part VIII, column (A), lines 3, 4, and 7c)	4,342.	3,400.
11 Other revenue (Part VIII, column (A), lines 5, 6, 8c, 9c, 10c, and 11c)		
12 Total revenue - add lines 8 through 11 (must equal Part VIII, column (A), line 12)	768,812.	713,370.
13 Grants and similar amounts paid (Part IX, column (A), lines 1-3)		
14 Benefits paid to or for members (Part IX, column (A), line 4)		
15 Salaries, other compensation, employee benefits (Part IX, column (A), lines 5-10)	299,409.	312,475.
16a Professional fundraising fees (Part IX, column (A), line 11e)		
b Total fundraising expenses (Part IX, column (D), line 25) ▶	0.	
17 Other expenses (Part IX, column (A), lines 11a-11d, 11f-24e)	390,417.	349,319.
18 Total expenses Add lines 13-17 (must equal Part IX, column (A), line 25)	689,826.	661,794.
19 Revenue less expenses. Subtract line 18 from line 12	78,986.	51,576.

	Beginning of Current Year	End of Year
20 Total assets (Part X, line 16)	1,498,852.	1,544,365.
21 Total liabilities (Part X, line 26)	283,480.	277,417.
22 Net assets or fund balances Subtract line 21 from line 20	1,215,372.	1,266,948.

Part II Signature Block

Under penalties of perjury, I declare that I have examined this return, including accompanying schedules and statements, and to the best of my knowledge and belief, it is true, correct, and complete. Declaration of preparer (other than officer) is based on all information of which preparer has any knowledge.

Signature of officer: *Keith Brice* Date: **2/13/13**
 Type or print name and title: **Keith Brice, President**

Print/Type preparer's name: **Nicolette R. Cross** Preparer's signature: *Nicolette R. Cross* Date: **02/13/13**
 Check if self-employed PTIN: **P01342550**

Firm's name: **O'DELL CROSS, A PROF. CORP.**
 Firm's address: **5001 CALIFORNIA AVE STE 212 BAKERSFIELD CA 93309-1692**
 Firm's EIN: **77-0568293**
 Phone no: **(661) 716-1160**

May the IRS discuss this return with the preparer shown above? (see instructions) Yes No

SCANNED MAR 15 2013

21P

Part III Statement of Program Service Accomplishments

Check if Schedule O contains a response to any question in this Part III

Input box for Schedule O response

1 Briefly describe the organization's mission

CREATE JOBS AND STIMULATE ECONOMIC GROWTH

2 Did the organization undertake any significant program services during the year which were not listed on the prior Form 990 or 990-EZ?

Yes No checkboxes

If 'Yes,' describe these new services on Schedule O

3 Did the organization cease conducting, or make significant changes in how it conducts, any program services?

Yes No checkboxes

If 'Yes,' describe these changes on Schedule O

4 Describe the organization's program service accomplishments for each of its three largest program services, as measured by expenses Section 501(c)(3) and 501(c)(4) organizations and section 4947(a)(1) trusts are required to report the amount of grants and allocations to others, the total expenses, and revenue, if any, for each program service reported

4a (Code) (Expenses \$ 661,794. including grants of \$ 0.) (Revenue \$ 713,370.)

THE CORPORATION'S GOAL IS TO CREATE JOBS AND STIMULATE ECONOMIC DEVELOPMENT IN KERN COUNTY BY OFFERING THE SBA LOAN PROGRAM TO SMALL BUSINESS OWNERS IN KERN COUNTY.

4b (Code) (Expenses \$ including grants of \$) (Revenue \$)

4c (Code) (Expenses \$ including grants of \$) (Revenue \$)

4d Other program services (Describe in Schedule O) (Expenses \$ including grants of \$) (Revenue \$)

4e Total program service expenses 661,794.

Part IV Checklist of Required Schedules

	Yes	No
1 Is the organization described in section 501(c)(3) or 4947(a)(1) (other than a private foundation)? If 'Yes,' complete Schedule A		X
2 Is the organization required to complete Schedule B, Schedule of Contributors (see instructions)?		X
3 Did the organization engage in direct or indirect political campaign activities on behalf of or in opposition to candidates for public office? If 'Yes,' complete Schedule C, Part I		X
4 Section 501(c)(3) organizations Did the organization engage in lobbying activities, or have a section 501(h) election in effect during the tax year? If 'Yes,' complete Schedule C, Part II		
5 Is the organization a section 501(c)(4), 501(c)(5), or 501(c)(6) organization that receives membership dues, assessments, or similar amounts as defined in Revenue Procedure 98-19? If 'Yes,' complete Schedule C, Part III		X
6 Did the organization maintain any donor advised funds or any similar funds or accounts for which donors have the right to provide advice on the distribution or investment of amounts in such funds or accounts? If 'Yes,' complete Schedule D, Part I		X
7 Did the organization receive or hold a conservation easement, including easements to preserve open space, the environment, historic land areas or historic structures? If 'Yes,' complete Schedule D, Part II		X
8 Did the organization maintain collections of works of art, historical treasures, or other similar assets? If 'Yes,' complete Schedule D, Part III		X
9 Did the organization report an amount in Part X, line 21, serve as a custodian for amounts not listed in Part X, or provide credit counseling, debt management, credit repair, or debt negotiation services? If 'Yes,' complete Schedule D, Part IV		X
10 Did the organization, directly or through a related organization, hold assets in temporarily restricted endowments, permanent endowments, or quasi-endowments? If 'Yes,' complete Schedule D, Part V		X
11 If the organization's answer to any of the following questions is 'Yes,' then complete Schedule D, Parts VI, VII, VIII, IX, or X as applicable		
a Did the organization report an amount for land, buildings and equipment in Part X, line 10? If 'Yes,' complete Schedule D, Part VI	X	
b Did the organization report an amount for investments— other securities in Part X, line 12 that is 5% or more of its total assets reported in Part X, line 16? If 'Yes,' complete Schedule D, Part VII		X
c Did the organization report an amount for investments— program related in Part X, line 13 that is 5% or more of its total assets reported in Part X, line 16? If 'Yes,' complete Schedule D, Part VIII		X
d Did the organization report an amount for other assets in Part X, line 15 that is 5% or more of its total assets reported in Part X, line 16? If 'Yes,' complete Schedule D, Part IX		X
e Did the organization report an amount for other liabilities in Part X, line 25? If 'Yes,' complete Schedule D, Part X	X	
f Did the organization's separate or consolidated financial statements for the tax year include a footnote that addresses the organization's liability for uncertain tax positions under FIN 48 (ASC 740)? If 'Yes,' complete Schedule D, Part X		X
12a Did the organization obtain separate, independent audited financial statements for the tax year? If 'Yes,' complete Schedule D, Parts XI, XII, and XIII	X	
b Was the organization included in consolidated, independent audited financial statements for the tax year? If 'Yes,' and if the organization answered 'No' to line 12a, then completing Schedule D, Parts XI, XII, and XIII is optional		X
13 Is the organization a school described in section 170(b)(1)(A)(ii)? If 'Yes,' complete Schedule E		X
14a Did the organization maintain an office, employees, or agents outside of the United States?		X
b Did the organization have aggregate revenues or expenses of more than \$10,000 from grantmaking, fundraising, business, investment, and program service activities outside the United States, or aggregate foreign investments valued at \$100,000 or more? If 'Yes,' complete Schedule F, Parts I and IV		X
15 Did the organization report on Part IX, column (A), line 3, more than \$5,000 of grants or assistance to any organization or entity located outside the United States? If 'Yes,' complete Schedule F, Parts II and IV		X
16 Did the organization report on Part IX, column (A), line 3, more than \$5,000 of aggregate grants or assistance to individuals located outside the United States? If 'Yes,' complete Schedule F, Parts III and IV		X
17 Did the organization report a total of more than \$15,000 of expenses for professional fundraising services on Part IX, column (A), lines 6 and 11e? If 'Yes,' complete Schedule G, Part I (see instructions)		X
18 Did the organization report more than \$15,000 total of fundraising event gross income and contributions on Part VIII, lines 1c and 8a? If 'Yes,' complete Schedule G, Part II		X
19 Did the organization report more than \$15,000 of gross income from gaming activities on Part VIII, line 9a? If 'Yes,' complete Schedule G, Part III		X
20 a Did the organization operate one or more hospital facilities? If 'Yes,' complete Schedule H		X
b If 'Yes' to line 20a, did the organization attach a copy of its audited financial statements to this return?		

Part IV Checklist of Required Schedules (continued)

	Yes	No
21 Did the organization report more than \$5,000 of grants and other assistance to governments and organizations in the United States on Part IX, column (A), line 1? <i>If 'Yes,' complete Schedule I, Parts I and II</i>		X
22 Did the organization report more than \$5,000 of grants and other assistance to individuals in the United States on Part IX, column (A), line 2? <i>If 'Yes,' complete Schedule I, Parts I and III</i>		X
23 Did the organization answer 'Yes' to Part VII, Section A, line 3, 4, or 5 about compensation of the organization's current and former officers, directors, trustees, key employees, and highest compensated employees? <i>If 'Yes,' complete Schedule J</i>	X	
24a Did the organization have a tax-exempt bond issue with an outstanding principal amount of more than \$100,000 as of the last day of the year, and that was issued after December 31, 2002? <i>If 'Yes,' answer lines 24b through 24d and complete Schedule K. If 'No,' go to line 25</i>		X
b Did the organization invest any proceeds of tax-exempt bonds beyond a temporary period exception?		
c Did the organization maintain an escrow account other than a refunding escrow at any time during the year to defease any tax-exempt bonds?		
d Did the organization act as an 'on behalf of' issuer for bonds outstanding at any time during the year?		
25a Section 501(c)(3) and 501(c)(4) organizations. Did the organization engage in an excess benefit transaction with a disqualified person during the year? <i>If 'Yes,' complete Schedule L, Part I</i>		X
b Is the organization aware that it engaged in an excess benefit transaction with a disqualified person in a prior year, and that the transaction has not been reported on any of the organization's prior Forms 990 or 990-EZ? <i>If 'Yes,' complete Schedule L, Part I</i>		X
26 Was a loan to or by a current or former officer, director, trustee, key employee, highly compensated employee, or disqualified person outstanding as of the end of the organization's tax year? <i>If 'Yes,' complete Schedule L, Part II</i>		X
27 Did the organization provide a grant or other assistance to an officer, director, trustee, key employee, substantial contributor or employee thereof, a grant selection committee member, or to a 35% controlled entity or family member of any of these persons? <i>If 'Yes,' complete Schedule L, Part III</i>		X
28 Was the organization a party to a business transaction with one of the following parties (see Schedule L, Part IV instructions for applicable filing thresholds, conditions, and exceptions)		
a A current or former officer, director, trustee, or key employee? <i>If 'Yes,' complete Schedule L, Part IV</i>		X
b A family member of a current or former officer, director, trustee, or key employee? <i>If 'Yes,' complete Schedule L, Part IV</i>		X
c An entity of which a current or former officer, director, trustee, or key employee (or a family member thereof) was an officer, director, trustee, or direct or indirect owner? <i>If 'Yes,' complete Schedule L, Part IV</i>		X
29 Did the organization receive more than \$25,000 in non-cash contributions? <i>If 'Yes,' complete Schedule M</i>		X
30 Did the organization receive contributions of art, historical treasures, or other similar assets, or qualified conservation contributions? <i>If 'Yes,' complete Schedule M</i>		X
31 Did the organization liquidate, terminate, or dissolve and cease operations? <i>If 'Yes,' complete Schedule N, Part I</i>		X
32 Did the organization sell, exchange, dispose of, or transfer more than 25% of its net assets? <i>If 'Yes,' complete Schedule N, Part II</i>		X
33 Did the organization own 100% of an entity disregarded as separate from the organization under Regulations sections 301.7701-2 and 301.7701-3? <i>If 'Yes,' complete Schedule R, Part I</i>		X
34 Was the organization related to any tax-exempt or taxable entity? <i>If 'Yes,' complete Schedule R, Parts II, III, IV, and V, line 1</i>		X
35a Did the organization have a controlled entity within the meaning of section 512(b)(13)?		X
b Did the organization receive any payment from or engage in any transaction with a controlled entity within the meaning of section 512(b)(13)? <i>If 'Yes,' complete Schedule R, Part V, line 2</i>		X
36 Section 501(c)(3) organizations. Did the organization make any transfers to an exempt non-charitable related organization? <i>If 'Yes,' complete Schedule R, Part V, line 2</i>		
37 Did the organization conduct more than 5% of its activities through an entity that is not a related organization and that is treated as a partnership for federal income tax purposes? <i>If 'Yes,' complete Schedule R, Part VI</i>		X
38 Did the organization complete Schedule O and provide explanations in Schedule O for Part VI, lines 11 and 19? Note. All Form 990 filers are required to complete Schedule O	X	

BAA

Part V Statements Regarding Other IRS Filings and Tax Compliance

Check if Schedule O contains a response to any question in this Part V

		Yes	No
1 a	Enter the number reported in Box 3 of Form 1096. Enter -0- if not applicable. 0		<input checked="" type="checkbox"/>
1 b	Enter the number of Forms W-2G included in line 1a. Enter -0- if not applicable. 0		<input checked="" type="checkbox"/>
c	Did the organization comply with backup withholding rules for reportable payments to vendors and reportable gaming (gambling) winnings to prize winners?	<input checked="" type="checkbox"/>	
2 a	Enter the number of employees reported on Form W-3, Transmittal of Wage and Tax Statements, filed for the calendar year ending with or within the year covered by this return. 5		
b	If at least one is reported on line 2a, did the organization file all required federal employment tax returns? Note. If the sum of lines 1a and 2a is greater than 250, you may be required to e-file (see instructions)	<input checked="" type="checkbox"/>	
3 a	Did the organization have unrelated business gross income of \$1,000 or more during the year?		<input checked="" type="checkbox"/>
b	If 'Yes,' has it filed a Form 990-T for this year? If 'No,' provide an explanation in Schedule O		
4 a	At any time during the calendar year, did the organization have an interest in, or a signature or other authority over, a financial account in a foreign country (such as a bank account, securities account, or other financial account)?		<input checked="" type="checkbox"/>
b	If 'Yes,' enter the name of the foreign country: _____ See instructions for filing requirements for Form TD F 90-22.1, Report of Foreign Bank and Financial Accounts.		
5 a	Was the organization a party to a prohibited tax shelter transaction at any time during the tax year?		<input checked="" type="checkbox"/>
b	Did any taxable party notify the organization that it was or is a party to a prohibited tax shelter transaction?		<input checked="" type="checkbox"/>
c	If 'Yes,' to line 5a or 5b, did the organization file Form 8886-T?		
6 a	Does the organization have annual gross receipts that are normally greater than \$100,000, and did the organization solicit any contributions that were not tax deductible?		<input checked="" type="checkbox"/>
b	If 'Yes,' did the organization include with every solicitation an express statement that such contributions or gifts were not tax deductible?		
7	Organizations that may receive deductible contributions under section 170(c).		
a	Did the organization receive a payment in excess of \$75 made partly as a contribution and partly for goods and services provided to the payor?		<input checked="" type="checkbox"/>
b	If 'Yes,' did the organization notify the donor of the value of the goods or services provided?		
c	Did the organization sell, exchange, or otherwise dispose of tangible personal property for which it was required to file Form 8282?		<input checked="" type="checkbox"/>
d	If 'Yes,' indicate the number of Forms 8282 filed during the year. 7d		
e	Did the organization receive any funds, directly or indirectly, to pay premiums on a personal benefit contract?		<input checked="" type="checkbox"/>
f	Did the organization, during the year, pay premiums, directly or indirectly, on a personal benefit contract?		<input checked="" type="checkbox"/>
g	If the organization received a contribution of qualified intellectual property, did the organization file Form 8899 as required?		
h	If the organization received a contribution of cars, boats, airplanes, or other vehicles, did the organization file a Form 1098-C?		
8	Sponsoring organizations maintaining donor advised funds and section 509(a)(3) supporting organizations. Did the supporting organization, or a donor advised fund maintained by a sponsoring organization, have excess business holdings at any time during the year?		
9	Sponsoring organizations maintaining donor advised funds.		
a	Did the organization make any taxable distributions under section 4966?		
b	Did the organization make a distribution to a donor, donor advisor, or related person?		
10	Section 501(c)(7) organizations. Enter.		
a	Initiation fees and capital contributions included on Part VIII, line 12. 10a		
b	Gross receipts, included on Form 990, Part VIII, line 12, for public use of club facilities. 10b		
11	Section 501(c)(12) organizations. Enter.		
a	Gross income from members or shareholders. 11a		
b	Gross income from other sources (Do not net amounts due or paid to other sources against amounts due or received from them). 11b		
12 a	Section 4947(a)(1) non-exempt charitable trusts. Is the organization filing Form 990 in lieu of Form 1041?		
b	If 'Yes,' enter the amount of tax-exempt interest received or accrued during the year. 12b		
13	Section 501(c)(29) qualified nonprofit health insurance issuers.		
a	Is the organization licensed to issue qualified health plans in more than one state? Note. See the instructions for additional information the organization must report on Schedule O		
b	Enter the amount of reserves the organization is required to maintain by the states in which the organization is licensed to issue qualified health plans. 13b		
c	Enter the amount of reserves on hand. 13c		
14 a	Did the organization receive any payments for indoor tanning services during the tax year?		<input checked="" type="checkbox"/>
b	If 'Yes,' has it filed a Form 720 to report these payments? If 'No,' provide an explanation in Schedule O. 14b		

Part VI Governance, Management and Disclosure For each 'Yes' response to lines 2 through 7b below, and for a 'No' response to line 8a, 8b, or 10b below, describe the circumstances, processes, or changes in Schedule O. See instructions.

Check if Schedule O contains a response to any question in this Part VI

Section A. Governing Body and Management

		Yes	No
1a	Enter the number of voting members of the governing body at the end of the tax year. If there are material differences in voting rights among members of the governing body, or if the governing body delegated broad authority to an executive committee or similar committee, explain in Schedule O.		
	18		
1b	Enter the number of voting members included in line 1a, above, who are independent.		
	18		
2	Did any officer, director, trustee, or key employee have a family relationship or a business relationship with any other officer, director, trustee or key employee?		X
3	Did the organization delegate control over management duties customarily performed by or under the direct supervision of officers, directors or trustees, or key employees to a management company or other person?		X
4	Did the organization make any significant changes to its governing documents since the prior Form 990 was filed?		X
5	Did the organization become aware during the year of a significant diversion of the organization's assets?		X
6	Did the organization have members or stockholders?		X
7a	Did the organization have members, stockholders, or other persons who had the power to elect or appoint one or more members of the governing body?	X	
7b	Are any governance decisions of the organization reserved to (or subject to approval by) members, stockholders, or other persons other than the governing body?	X	
8	Did the organization contemporaneously document the meetings held or written actions undertaken during the year by the following:		
8a	The governing body?	X	
8b	Each committee with authority to act on behalf of the governing body?	X	
9	Is there any officer, director or trustee, or key employee listed in Part VII, Section A, who cannot be reached at the organization's mailing address? If 'Yes,' provide the names and addresses in Schedule O.		X

Section B. Policies (This Section B requests information about policies not required by the Internal Revenue Code.)

		Yes	No
10a	Did the organization have local chapters, branches, or affiliates?		X
10b	If 'Yes,' did the organization have written policies and procedures governing the activities of such chapters, affiliates, and branches to ensure their operations are consistent with the organization's exempt purposes?		
11a	Has the organization provided a complete copy of this Form 990 to all members of its governing body before filing the form?	X	
11b	Describe in Schedule O the process, if any, used by the organization to review this Form 990.		
12a	Did the organization have a written conflict of interest policy? If 'No,' go to line 13.	X	
12b	Were officers, directors or trustees, and key employees required to disclose annually interests that could give rise to conflicts?	X	
12c	Did the organization regularly and consistently monitor and enforce compliance with the policy? If 'Yes,' describe in Schedule O how this is done.	X	
13	Did the organization have a written whistleblower policy?	X	
14	Did the organization have a written document retention and destruction policy?	X	
15	Did the process for determining compensation of the following persons include a review and approval by independent persons, comparability data, and contemporaneous substantiation of the deliberation and decision?		
15a	The organization's CEO, Executive Director, or top management official.	X	
15b	Other officers of key employees of the organization. If 'Yes' to line 15a or 15b, describe the process in Schedule O (See instructions).		X
16a	Did the organization invest in, contribute assets to, or participate in a joint venture or similar arrangement with a taxable entity during the year?		X
16b	If 'Yes,' did the organization follow a written policy or procedure requiring the organization to evaluate its participation in joint venture arrangements under applicable federal tax law, and taken steps to safeguard the organization's exempt status with respect to such arrangements?		

Section C. Disclosure

- 17** List the states with which a copy of this Form 990 is required to be filed ▶ California
- 18** Section 6104 requires an organization to make its Forms 1023 (or 1024 if applicable), 990, and 990-T (501(c)(3)s only) available for public inspection. Indicate how you make these available. Check all that apply.
 Own website Another's website Upon request
- 19** Describe in Schedule O whether (and if so, how) the organization makes its governing documents, conflict of interest policy, and financial statements available to the public during the tax year.
- 20** State the name, physical address, and telephone number of the person who possesses the books and records of the organization.
 ▶ KEITH BRICE SAME BAKERSFIELD CA 93309 (661) 322-4241

Part VII Compensation of Officers, Directors, Trustees, Key Employees, Highest Compensated Employees, and Independent Contractors

Check if Schedule O contains a response to any question in this Part VII

Section A. Officers, Directors, Trustees, Key Employees, and Highest Compensated Employees

1 a Complete this table for all persons required to be listed. Report compensation for the calendar year ending with or within the organization's tax year.

- List all of the organization's **current** officers, directors, trustees (whether individuals or organizations), regardless of amount of compensation. Enter -0- in columns (D), (E), and (F) if no compensation was paid.
- List all of the organization's **current** key employees, if any. See instructions for definition of 'key employee.'
- List the organization's five **current** highest compensated employees (other than an officer, director, trustee, or key employee) who received reportable compensation (Box 5 of Form W-2 and/or Box 7 of Form 1099-MISC) of more than \$100,000 from the organization and any related organizations.
- List all of the organization's **former** officers, key employees, and highest compensated employees who received more than \$100,000 of reportable compensation from the organization and any related organizations.
- List all of the organization's **former directors or trustees** that received, in the capacity as a former director or trustee of the organization, more than \$10,000 of reportable compensation from the organization and any related organizations.

List persons in the following order: individual trustees or directors; institutional trustees; officers; key employees; highest compensated employees; and former such persons.

Check this box if neither the organization nor any related organization compensated any current officer, director, or trustee

(A) Name and title	(B) Average hours per week (describe hours for related organizations in Schedule O)	(C) Position (do not check more than one box, unless person is both an officer and a director/trustee)						(D) Reportable compensation from the organization (W-2/1099-MISC)	(E) Reportable compensation from related organizations (W-2/1099-MISC)	(F) Estimated amount of other compensation from the organization and related organizations
		Individual trustee or director	Institutional trustee	Officer	Key employee	Highest compensated employee	Former			
(1) <u>KEITH BRICE</u> <u>PRESIDENT</u>	40.00				X		155,152.	0.	0.	
(2) <u>DEBBIE MORENO</u> <u>CHAIR</u>	2.00	X					0.	0.	0.	
(3) <u>TOM ANCHORDOQUY</u> <u>SECRETARY</u>	2.00	X					0.	0.	0.	
(4) <u>TROY GRANT</u> <u>TREASURER</u>	2.00	X					0.	0.	0.	
(5) <u>WAYNE KRESS</u> <u>PAST CHAIR</u>	2.00	X					0.	0.	0.	
(6) <u>HOWDY MILLER</u> <u>DIRECTOR</u>	2.00	X					0.	0.	0.	
(7) <u>STEPHEN HAAPT</u> <u>DIRECTOR</u>	2.00	X					0.	0.	0.	
(8) <u>BART HILL</u> <u>DIRECTOR</u>	2.00	X					0.	0.	0.	
(9) <u>BRUCE JACOBSEN</u> <u>DIRECTOR</u>	2.00	X					0.	0.	0.	
(10) <u>JOHN PRYOR</u> <u>DIRECTOR</u>	2.00	X					0.	0.	0.	
(11) <u>PATRICK COLLINS</u> <u>DIRECTOR</u>	2.00	X					0.	0.	0.	
(12) <u>RICHARD FANUCCHI</u> <u>DIRECTOR</u>	2.00	X					0.	0.	0.	
(13) <u>STEPHEN ERMIGARAT</u> <u>DIRECTOR</u>	2.00	X					0.	0.	0.	
(14) <u>MORGAN CLAYTON</u> <u>DIRECTOR</u>	2.00	X					0.	0.	0.	

Part VII Section A. Officers, Directors, Trustees, Key Employees, and Highest Compensated Employees (cont)

(A) Name and title	(B) Average hours per week (describe hours for related organizations in Sch O)	(C) Position (do not check more than one box, unless person is both an officer and a director/trustee)						(D) Reportable compensation from the organization (W-2/1099-MISC)	(E) Reportable compensation from related organizations (W-2/1099-MISC)	(F) Estimated amount of other compensation from the organization and related organizations
		Individual trustee or director	Institutional trustee	Officer	Key employee	Highest compensated employee	Former			
(15) DAVID JAMES DIRECTOR	2.00	X					0.	0.	0.	
(16) DONNA KUNZ DIRECTOR	2.00	X					0.	0.	0.	
(17) MICHAEL OLAGUE DIRECTOR	2.00	X					0.	0.	0.	
(18) MORT BROWN DIRECTOR	2.00	X					0.	0.	0.	
(19) ANTHONY OLIVIERI DIRECTOR	2.00	X					0.	0.	0.	
(20)										
(21)										
(22)										
(23)										
(24)										
(25)										
1 b Sub-total							155,152.	0.	0.	
c Total from continuation sheets to Part VII, Section A										
d Total (add lines 1b and 1c)							155,152.	0.	0.	

2 Total number of individuals (including but not limited to those listed above) who received more than \$100,000 of reportable compensation from the organization **▶ 1**

	Yes	No
3 Did the organization list any former officer, director or trustee, key employee, or highest compensated employee on line 1a? <i>If 'Yes,' complete Schedule J for such individual</i>	X	
4 For any individual listed on line 1a, is the sum of reportable compensation and other compensation from the organization and related organizations greater than \$150,000? <i>If 'Yes' complete Schedule J for such individual</i>	X	
5 Did any person listed on line 1a receive or accrue compensation from any unrelated organization or individual for services rendered to the organization? <i>If 'Yes,' complete Schedule J for such person</i>		X

Section B. Independent Contractors

1 Complete this table for your five highest compensated independent contractors that received more than \$100,000 of compensation from the organization Report compensation for the calendar year ending with or within the organization's tax year

(A) Name and business address	(B) Description of services	(C) Compensation

2 Total number of independent contractors (including but not limited to those listed above) who received more than \$100,000 in compensation from the organization **▶**

Part VIII Statement of Revenue

		(A) Total revenue	(B) Related or exempt function revenue	(C) Unrelated business revenue	(D) Revenue excluded from tax under sections 512, 513, or 514	
CONTRIBUTIONS, GIFTS, GRANTS AND OTHER SIMILAR AMOUNTS	1 a Federated campaigns					
	1 b Membership dues					
	1 c Fundraising events					
	1 d Related organizations					
	1 e Government grants (contributions)					
	1 f All other contributions, gifts, grants, and similar amounts not included above					
	1 g Noncash contributions included in lns 1a-1f	\$				
1 h Total. Add lines 1a-1f						
PROGRAM SERVICE REVENUE	2 a _____					
	2 b _____					
	2 c _____					
	2 d _____					
	2 e _____					
	2 f All other program service revenue		709,970.	709,970.	0.	0.
	2 g Total. Add lines 2a-2f		709,970.			
3 Investment income (including dividends, interest and other similar amounts)		3,400.	3,400.	0.	0.	
4 Income from investment of tax-exempt bond proceeds						
5 Royalties						
OTHER REVENUE	6 a Gross rents	(i) Real	(ii) Personal			
	6 b Less rental expenses					
	6 c Rental income or (loss)					
	6 d Net rental income or (loss)					
	7 a Gross amount from sales of assets other than inventory	(i) Securities	(ii) Other			
	7 b Less cost or other basis and sales expenses					
	7 c Gain or (loss)					
	7 d Net gain or (loss)					
	8 a Gross income from fundraising events (not including \$ _____ of contributions reported on line 1c) See Part IV, line 18					
	8 b Less direct expenses					
	8 c Net income or (loss) from fundraising events					
	9 a Gross income from gaming activities See Part IV, line 19					
	9 b Less direct expenses					
	9 c Net income or (loss) from gaming activities					
	10 a Gross sales of inventory, less returns and allowances					
10 b Less cost of goods sold						
10 c Net income or (loss) from sales of inventory						
11 a _____	Miscellaneous Revenue	Business Code				
11 b _____						
11 c _____						
11 d All other revenue						
11 e Total. Add lines 11a-11d						
12 Total revenue. See instructions		713,370.	713,370.	0.	0.	

Part IX Statement of Functional Expenses

Section 501(c)(3) and 501(c)(4) organizations must complete all columns

All other organizations must complete column (A) but are not required to complete columns (B), (C), and (D)

Check if Schedule O contains a response to any question in this Part IX

<i>Do not include amounts reported on lines 6b, 7b, 8b, 9b, and 10b of Part VIII.</i>	(A) Total expenses	(B) Program service expenses	(C) Management and general expenses	(D) Fundraising expenses
1 Grants and other assistance to governments and organizations in the United States See Part IV, line 21				
2 Grants and other assistance to individuals in the United States See Part IV, line 22				
3 Grants and other assistance to governments, organizations, and individuals outside the United States. See Part IV, lines 15 and 16				
4 Benefits paid to or for members				
5 Compensation of current officers, directors, trustees, and key employees	89,500.	80,550.	8,950.	0.
6 Compensation not included above, to disqualified persons (as defined under section 4958(f)(1)) and persons described in section 4958(c)(3)(B)				
7 Other salaries and wages	182,221.	163,999.	18,222.	0.
8 Pension plan accruals and contributions (include section 401(k) and section 403(b) employer contributions)	14,075.	12,668.	1,407.	0.
9 Other employee benefits				
10 Payroll taxes	26,679.	24,011.	2,668.	0.
11 Fees for services (non-employees)				
a Management				
b Legal	20,500.	20,500.	0.	0.
c Accounting	28,298.	25,468.	2,830.	0.
d Lobbying				
e Professional fundraising services See Part IV, line 17				
f Investment management fees				
g Other				
12 Advertising and promotion	1,692.	1,692.	0.	0.
13 Office expenses	12,521.	11,269.	1,252.	0.
14 Information technology	7,786.	7,007.	779.	0.
15 Royalties				
16 Occupancy	33,537.	30,183.	3,354.	0.
17 Travel				
18 Payments of travel or entertainment expenses for any federal, state, or local public officials				
19 Conferences, conventions, and meetings	7,258.	7,258.	0.	0.
20 Interest				
21 Payments to affiliates				
22 Depreciation, depletion, and amortization	5,228.	4,705.	523.	0.
23 Insurance	21,298.	19,168.	2,130.	0.
24 Other expenses Itemize expenses not covered above (List miscellaneous expenses in line 24e If line 24e amount exceeds 10% of line 25, column (A) amount, list line 24e expenses on Schedule O)				
a <u>AUTO</u>	12,418.	11,797.	621.	0.
b <u>ANNUAL MEETING</u>	6,872.	6,872.	0.	0.
c <u>BOARD EXPENSE</u>	3,700.	3,330.	370.	0.
d <u>BUSINESS DEVELOPMENT</u>	13,118.	13,118.	0.	0.
e All other expenses	175,093.	140,577.	34,516.	0.
25 Total functional expenses. Add lines 1 through 24e	661,794.	584,172.	77,622.	0.
26 Joint costs. Complete this line only if the organization reported in column (B) joint costs from a combined educational campaign and fundraising solicitation Check here <input type="checkbox"/> if following SOP 98-2 (ASC 958-720)				

Part X Balance Sheet

		(A) Beginning of year		(B) End of year	
ASSETS	1	Cash – non-interest-bearing	345,187.	1	237,782.
	2	Savings and temporary cash investments	979,670.	2	682,873.
	3	Pledges and grants receivable, net		3	
	4	Accounts receivable, net	157,251.	4	205,992.
	5	Receivables from current and former officers, directors, trustees, key employees, and highest compensated employees Complete Part II of Schedule L		5	
	6	Receivables from other disqualified persons (as defined under section 4958(f)(1)), persons described in section 4958(c)(3)(B), and contributing employers and sponsoring organizations of section 501(c)(9) voluntary employees' beneficiary organizations (see instructions)		6	
	7	Notes and loans receivable, net		7	
	8	Inventories for sale or use		8	
	9	Prepaid expenses and deferred charges	10,622.	9	13,996.
	10a	Land, buildings, and equipment cost or other basis Complete Part VI of Schedule D	10a 463,739.		
	b	Less accumulated depreciation	10b 62,004.	10c 4,135.	401,735.
	11	Investments – publicly traded securities		11	
	12	Investments – other securities See Part IV, line 11		12	
	13	Investments – program-related See Part IV, line 11		13	
	14	Intangible assets		14	
	15	Other assets See Part IV, line 11	1,987.	15	1,987.
16	Total assets. Add lines 1 through 15 (must equal line 34)	1,498,852.	16	1,544,365.	
LIABILITIES	17	Accounts payable and accrued expenses	47,110.	17	39,640.
	18	Grants payable		18	
	19	Deferred revenue	24,793.	19	20,654.
	20	Tax-exempt bond liabilities		20	
	21	Escrow or custodial account liability Complete Part IV of Schedule D		21	
	22	Payables to current and former officers, directors, trustees, key employees, highest compensated employees, and disqualified persons Complete Part II of Schedule L		22	
	23	Secured mortgages and notes payable to unrelated third parties		23	
	24	Unsecured notes and loans payable to unrelated third parties		24	
	25	Other liabilities (including federal income tax, payables to related third parties, and other liabilities not included on lines 17-24) Complete Part X of Schedule D	211,577.	25	217,123.
	26	Total liabilities. Add lines 17 through 25	283,480.	26	277,417.
NET ASSETS OR FUND BALANCES	Organizations that follow SFAS 117, check here <input checked="" type="checkbox"/> and complete lines 27 through 29 and lines 33 and 34.				
	27	Unrestricted net assets	1,215,372.	27	1,266,948.
	28	Temporarily restricted net assets		28	
	29	Permanently restricted net assets		29	
	Organizations that do not follow SFAS 117, check here <input type="checkbox"/> and complete lines 30 through 34.				
	30	Capital stock or trust principal, or current funds		30	
	31	Paid-in or capital surplus, or land, building, or equipment fund		31	
	32	Retained earnings, endowment, accumulated income, or other funds		32	
	33	Total net assets or fund balances	1,215,372.	33	1,266,948.
34	Total liabilities and net assets/fund balances	1,498,852.	34	1,544,365.	

BAA

Form 990 (2011)

Part XI Reconciliation of Net Assets

Check if Schedule O contains a response to any question in this Part XI

1	Total revenue (must equal Part VIII, column (A), line 12)	1	713,370.
2	Total expenses (must equal Part IX, column (A), line 25)	2	661,794.
3	Revenue less expenses Subtract line 2 from line 1	3	51,576.
4	Net assets or fund balances at beginning of year (must equal Part X, line 33, column (A))	4	1,215,372.
5	Other changes in net assets or fund balances (explain in Schedule O)	5	
6	Net assets or fund balances at end of year Combine lines 3, 4, and 5 (must equal Part X, line 33, column (B))	6	1,266,948.

Part XII Financial Statements and Reporting

Check if Schedule O contains a response to any question in this Part XII

1 Accounting method used to prepare the Form 990 Cash Accrual Other _____

If the organization changed its method of accounting from a prior year or checked 'Other,' explain in Schedule O

2a Were the organization's financial statements compiled or reviewed by an independent accountant?

b Were the organization's financial statements audited by an independent accountant?

c If 'Yes' to line 2a or 2b, does the organization have a committee that assumes responsibility for oversight of the audit, review, or compilation of its financial statements and selection of an independent accountant?

If the organization changed either its oversight process or selection process during the tax year, explain in Schedule O

d If 'Yes' to line 2a or 2b, check a box below to indicate whether the financial statements for the year were issued on a separate basis, consolidated basis, or both

Separate basis Consolidated basis Both consolidated and separate basis

3a As a result of a federal award, was the organization required to undergo an audit or audits as set forth in the Single Audit Act and OMB Circular A-133?

b If 'Yes,' did the organization undergo the required audit or audits? If the organization did not undergo the required audit or audits, explain why in Schedule O and describe any steps taken to undergo such audits

	Yes	No
2a		X
2b	X	
2c	X	
3a		X
3b		

BAA

Form 990 (2011)

**SCHEDULE D
(Form 990)**

Department of the Treasury
Internal Revenue Service

Supplemental Financial Statements

▶ **Complete if the organization answered 'Yes,' to Form 990, Part IV, lines 6, 7, 8, 9, 10, 11a, 11b, 11c, 11d, 11e, 11f, 12a, or 12b.**
▶ **Attach to Form 990.** ▶ **See separate instructions.**

OMB No 1545-0047

2011

Open to Public Inspection

Name of the organization

Employer identification number

MID STATE DEVELOPMENT CORPORATION

95-3507734

Part I Organizations Maintaining Donor Advised Funds or Other Similar Funds or Accounts. Complete if the organization answered 'Yes' to Form 990, Part IV, line 6.

	(a) Donor advised funds	(b) Funds and other accounts
1 Total number at end of year		
2 Aggregate contributions to (during year)		
3 Aggregate grants from (during year)		
4 Aggregate value at end of year		

- 5 Did the organization inform all donors and donor advisors in writing that the assets held in donor advised funds are the organization's property, subject to the organization's exclusive legal control? Yes No
- 6 Did the organization inform all grantees, donors, and donor advisors in writing that grant funds can be used only for charitable purposes and not for the benefit of the donor or donor advisor, or for any other purpose conferring impermissible private benefit? Yes No

Part II Conservation Easements. Complete if the organization answered 'Yes' to Form 990, Part IV, line 7.

- 1 Purpose(s) of conservation easements held by the organization (check all that apply)
- | | |
|--|--|
| <input type="checkbox"/> Preservation of land for public use (e.g., recreation or education) | <input type="checkbox"/> Preservation of an historically important land area |
| <input type="checkbox"/> Protection of natural habitat | <input type="checkbox"/> Preservation of a certified historic structure |
| <input type="checkbox"/> Preservation of open space | |

- 2 Complete lines 2a through 2d if the organization held a qualified conservation contribution in the form of a conservation easement on the last day of the tax year

- a Total number of conservation easements
- b Total acreage restricted by conservation easements
- c Number of conservation easements on a certified historic structure included in (a)
- d Number of conservation easements included in (c) acquired after 8/17/06, and not on a historic structure listed in the National Register

	Held at the End of the Tax Year
2a	
2b	
2c	
2d	

- 3 Number of conservation easements modified, transferred, released, extinguished, or terminated by the organization during the tax year ▶ _____
- 4 Number of states where property subject to conservation easement is located ▶ _____
- 5 Does the organization have a written policy regarding the periodic monitoring, inspection, handling of violations, and enforcement of the conservation easements it holds? Yes No
- 6 Staff and volunteer hours devoted to monitoring, inspecting, and enforcing conservation easements during the year ▶ _____
- 7 Amount of expenses incurred in monitoring, inspecting, and enforcing conservation easements during the year ▶ \$ _____
- 8 Does each conservation easement reported on line 2(d) above satisfy the requirements of section 170(h)(4)(B)(i) and section 170(h)(4)(B)(ii)? Yes No
- 9 In Part XIV, describe how the organization reports conservation easements in its revenue and expense statement, and balance sheet, and include, if applicable, the text of the footnote to the organization's financial statements that describes the organization's accounting for conservation easements

Part III Organizations Maintaining Collections of Art, Historical Treasures, or Other Similar Assets. Complete if the organization answered 'Yes' to Form 990, Part IV, line 8.

- 1 a If the organization elected, as permitted under SFAS 116 (ASC 958), not to report in its revenue statement and balance sheet works of art, historical treasures, or other similar assets held for public exhibition, education, or research in furtherance of public service, provide in Part XIV, the text of the footnote to its financial statements that describes these items
- b If the organization elected, as permitted under SFAS 116 (ASC 958), to report in its revenue statement and balance sheet works of art, historical treasures, or other similar assets held for public exhibition, education, or research in furtherance of public service, provide the following amounts relating to these items
- (i) Revenues included in Form 990, Part VIII, line 1 ▶ \$ _____
- (ii) Assets included in Form 990, Part X ▶ \$ _____
- 2 If the organization received or held works of art, historical treasures, or other similar assets for financial gain, provide the following amounts required to be reported under SFAS 116 (ASC 958) relating to these items
- a Revenues included in Form 990, Part VIII, line 1 ▶ \$ _____
- b Assets included in Form 990, Part X ▶ \$ _____

Part III Organizations Maintaining Collections of Art, Historical Treasures, or Other Similar Assets (continued)

3 Using the organization's acquisition, accession, and other records, check any of the following that are a significant use of its collection items (check all that apply)

- a** Public exhibition
- b** Scholarly research
- c** Preservation for future generations
- d** Loan or exchange programs
- e** Other _____

4 Provide a description of the organization's collections and explain how they further the organization's exempt purpose in Part XIV

5 During the year, did the organization solicit or receive donations of art, historical treasures, or other similar assets to be sold to raise funds rather than to be maintained as part of the organization's collection? Yes No

Part IV Escrow and Custodial Arrangements. Complete if the organization answered 'Yes' to Form 990, Part IV, line 9, or reported an amount on Form 990, Part X, line 21.

1 a Is the organization an agent, trustee, custodian, or other intermediary for contributions or other assets not included on Form 990, Part X? Yes No

b If 'Yes,' explain the arrangement in Part XIV and complete the following table

	Amount
1 c	
1 d	
1 e	
1 f	

- c** Beginning balance
- d** Additions during the year
- e** Distributions during the year
- f** Ending balance

2 a Did the organization include an amount on Form 990, Part X, line 21? Yes No

b If 'Yes,' explain the arrangement in Part XIV

Part V Endowment Funds. Complete if the organization answered 'Yes' to Form 990, Part IV, line 10.

	(a) Current year	(b) Prior year	(c) Two years back	(d) Three years back	(e) Four years back
1 a Beginning of year balance					
b Contributions					
c Net investment earnings, gains, and losses					
d Grants or scholarships					
e Other expenditures for facilities and programs					
f Administrative expenses					
g End of year balance					

2 Provide the estimated percentage of the current year end balance (line 1g, column (a)) held as

- a** Board designated or quasi-endowment ▶ _____ %
 - b** Permanent endowment ▶ _____ %
 - c** Temporarily restricted endowment ▶ _____ %
- The percentages in lines 2a, 2b, and 2c should equal 100%

3 a Are there endowment funds not in the possession of the organization that are held and administered for the organization by

	Yes	No
3 a(i) unrelated organizations		
3 a(ii) related organizations		
3 b If 'Yes' to 3a(ii), are the related organizations listed as required on Schedule R?		

- (i)** unrelated organizations
- (ii)** related organizations

b If 'Yes' to 3a(ii), are the related organizations listed as required on Schedule R?

4 Describe in Part XIV the intended uses of the organization's endowment funds

Part VI Land, Buildings, and Equipment. See Form 990, Part X, line 10.

Description of property	(a) Cost or other basis (investment)	(b) Cost or other basis (other)	(c) Accumulated depreciation	(d) Book value
1 a Land				
b Buildings				
c Leasehold improvements				
d Equipment				
e Other				

Total. Add lines 1a through 1e (Column (d) must equal Form 990, Part X, column (B), line 10(c)) ▶

Part VII Investments – Other Securities. See Form 990, Part X, line 12.

(a) Description of security or category (including name of security)	(b) Book value	(c) Method of valuation Cost or end-of-year market value
(1) Financial derivatives		
(2) Closely-held equity interests		
(3) Other		
(A) -----		
(B) -----		
(C) -----		
(D) -----		
(E) -----		
(F) -----		
(G) -----		
(H) -----		
(I) -----		
Total. (Column (b) must equal Form 990 Part X, column (B) line 12) ▶		

Part VIII Investments – Program Related. See Form 990, Part X, line 13.

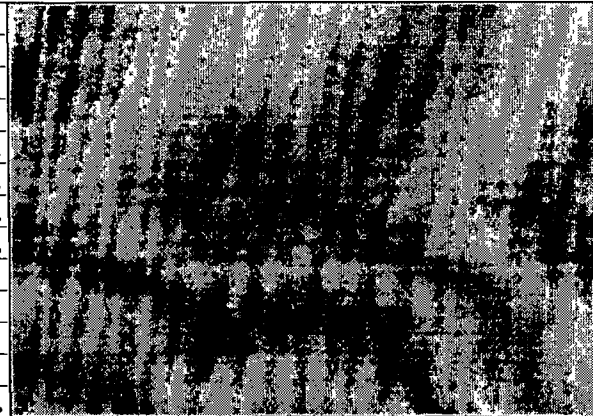
(a) Description of investment type	(b) Book value	(c) Method of valuation Cost or end-of-year market value
(1)		
(2)		
(3)		
(4)		
(5)		
(6)		
(7)		
(8)		
(9)		
(10)		
Total. (Column (b) must equal Form 990, Part X, column (B) line 13) ▶		

Part IX Other Assets. See Form 990, Part X, line 15.

(a) Description	(b) Book value
(1)	
(2)	
(3)	
(4)	
(5)	
(6)	
(7)	
(8)	
(9)	
(10)	
Total. (Column (b) must equal Form 990, Part X, column (B), line 15) ▶	

Part X Other Liabilities. See Form 990, Part X, line 25.

(a) Description of liability	(b) Book value
(1) Federal income taxes	
(2) REFUNDABLE DEPOSITS	48,000.
(3) COMMISSIONS PAYABLE	70,073.
(4) EMPLOYEE BONUS PAYABLE	26,591.
(5) EMPLOYEE BENEFIT PAYABLE	2,541.
(6) ACCRUED TIME OFF	58,080.
(7) ACCRUED PAYROLL TAXES	11,838.
(8)	
(9)	
(10)	
(11)	
Total. (Column (b) must equal Form 990, Part X, column (B) line 25) ▶	217,123.



2 FIN 48 (ASC 740) Footnote In Part XIV, provide the text of the footnote to the organization's financial statements that reports the organization's liability for uncertain tax positions under FIN 48 (ASC 740)

Part XI Reconciliation of Change in Net Assets from Form 990 to Audited Financial Statements

1	Total revenue (Form 990, Part VIII, column (A), line 12)		713,370.
2	Total expenses (Form 990, Part IX, column (A), line 25)		661,794.
3	Excess or (deficit) for the year Subtract line 2 from line 1		51,576.
4	Net unrealized gains (losses) on investments		
5	Donated services and use of facilities		
6	Investment expenses		
7	Prior period adjustments		
8	Other (Describe in Part XIV)		
9	Total adjustments (net) Add lines 4 through 8		
10	Excess or (deficit) for the year per audited financial statements Combine lines 3 and 9		51,576.

Part XII Reconciliation of Revenue per Audited Financial Statements With Revenue per Return

1	Total revenue, gains, and other support per audited financial statements		1	713,370.
2	Amounts included on line 1 but not on Form 990, Part VIII, line 12.			
a	Net unrealized gains on investments	2a		
b	Donated services and use of facilities	2b		
c	Recoveries of prior year grants	2c		
d	Other (Describe in Part XIV)	2d		
e	Add lines 2a through 2d		2e	
3	Subtract line 2e from line 1		3	713,370.
4	Amounts included on Form 990, Part VIII, line 12, but not on line 1			
a	Investment expenses not included on Form 990, Part VIII, line 7b	4a		
b	Other (Describe in Part XIV)	4b		
c	Add lines 4a and 4b		4c	
5	Total revenue Add lines 3 and 4c. (This must equal Form 990, Part I, line 12)		5	713,370.

Part XIII Reconciliation of Expenses per Audited Financial Statements With Expenses per Return

1	Total expenses and losses per audited financial statements		1	661,794.
2	Amounts included on line 1 but not on Form 990, Part IX, line 25			
a	Donated services and use of facilities	2a		
b	Prior year adjustments	2b		
c	Other losses	2c		
d	Other (Describe in Part XIV)	2d		
e	Add lines 2a through 2d		2e	
3	Subtract line 2e from line 1		3	661,794.
4	Amounts included on Form 990, Part IX, line 25, but not on line 1:			
a	Investment expenses not included on Form 990, Part VIII, line 7b	4a		
b	Other (Describe in Part XIV)	4b		
c	Add lines 4a and 4b		4c	
5	Total expenses Add lines 3 and 4c. (This must equal Form 990, Part I, line 18)		5	661,794.

Part XIV Supplemental Information

Complete this part to provide the descriptions required for Part II, lines 3, 5, and 9; Part III, lines 1a and 4; Part IV, lines 1b and 2b; Part V, line 4; Part X, line 2; Part XI, line 8; Part XII, lines 2d and 4b; and Part XIII, lines 2d and 4b. Also complete this part to provide any additional information

**SCHEDULE J
(Form 990)**

Compensation Information

OMB No 1545-0047

For certain Officers, Directors, Trustees, Key Employees, and Highest Compensated Employees

2011

▶ **Complete if the organization answered 'Yes' to Form 990, Part IV, line 23.**
▶ **Attach to Form 990.** ▶ **See separate instructions.**

Open to Public Inspection

Department of the Treasury
Internal Revenue Service

Name of the organization

Employer identification number

MID STATE DEVELOPMENT CORPORATION

95-3507734

Part I Questions Regarding Compensation

1 a Check the appropriate box(es) if the organization provided any of the following to or for a person listed in Form 990, Part VII, Section A, line 1a. Complete Part III to provide any relevant information regarding these items.

- | | |
|--|--|
| <input type="checkbox"/> First-class or charter travel | <input type="checkbox"/> Housing allowance or residence for personal use |
| <input type="checkbox"/> Travel for companions | <input type="checkbox"/> Payments for business use of personal residence |
| <input type="checkbox"/> Tax indemnification and gross-up payments | <input type="checkbox"/> Health or social club dues or initiation fees |
| <input type="checkbox"/> Discretionary spending account | <input type="checkbox"/> Personal services (e.g., maid, chauffeur, chef) |

b If any of the boxes on line 1a are checked, did the organization follow a written policy regarding payment or reimbursement or provision of all of the expenses described above? If 'No,' complete Part III to explain.

2 Did the organization require substantiation prior to reimbursing or allowing expenses incurred by all officers, directors, trustees, and the CEO/Executive Director, regarding the items checked in line 1a?

3 Indicate which, if any, of the following the filing organization used to establish the compensation of the organization's CEO/Executive Director. Check all that apply. Do not check any boxes for methods used by a related organization to establish compensation of the CEO/Executive Director. Explain in Part III.

- | | |
|--|--|
| <input type="checkbox"/> Compensation committee | <input type="checkbox"/> Written employment contract |
| <input type="checkbox"/> Independent compensation consultant | <input type="checkbox"/> Compensation survey or study |
| <input type="checkbox"/> Form 990 of other organizations | <input type="checkbox"/> Approval by the board or compensation committee |

4 During the year, did any person listed in Form 990, Part VII, Section A, line 1a with respect to the filing organization or a related organization:

- a** Receive a severance payment or change-of-control payment?
b Participate in, or receive payment from, a supplemental nonqualified retirement plan?
c Participate in, or receive payment from, an equity-based compensation arrangement?
 If 'Yes' to any of lines 4a-c, list the persons and provide the applicable amounts for each item in Part III.

Only section 501(c)(3) and 501(c)(4) organizations must complete lines 5-9.

5 For persons listed in Form 990, Part VII, Section A, line 1a, did the organization pay or accrue any compensation contingent on the revenues of:

- a** The organization?
b Any related organization?
 If 'Yes' to line 5a or 5b, describe in Part III.

6 For persons listed in Form 990, Part VII, Section A, line 1a, did the organization pay or accrue any compensation contingent on the net earnings of:

- a** The organization?
b Any related organization?
 If 'Yes' to line 6a or 6b, describe in Part III.

7 For persons listed in Form 990, Part VII, Section A, line 1a, did the organization provide any non-fixed payments not described in lines 5 and 6? If 'Yes,' describe in Part III.

8 Were any amounts reported in Form 990, Part VII, paid or accrued pursuant to a contract that was subject to the initial contract exception described in Regulations section 53.4958-4(a)(3)? If 'Yes,' describe in Part III.

9 If 'Yes' to line 8, did the organization also follow the rebuttable presumption procedure described in Regulations section 53.4958-6(c)?

	Yes	No
1 a		
1 b		
2		
3		
4 a		X
4 b		X
4 c		X
5 a		X
5 b		X
6 a		X
6 b		X
7		X
8		X
9		

BAA For Paperwork Reduction Act Notice, see the Instructions for Form 990.

Schedule J (Form 990) 2011

MID STATE DEVELOPMENT CORPORATION

Part III Officers, Directors, Trustees, Key Employees, and Highest Compensated Employees. Use duplicate copies if additional space is needed.

For each individual whose compensation must be reported in Schedule J, report compensation from the organization on row (i) and from related organizations, described in the instructions on row (ii). Do not list any individuals that are not listed on Form 990, Part VII.

Note. The sum of columns (B)(i)-(iii) for each listed individual must equal the total amount of Form 990, Part VII, Section A, line 1a, applicable columns (D) and (E) amounts for that individual.

(A) Name	(B) Breakdown of W-2 and/or 1099-MISC compensation			(C) Retirement and other deferred compensation	(D) Nontaxable benefits	(E) Total of columns (B)(i)-(D)	(F) Compensation reported as deferred in prior Form 990
	(i) Base compensation	(ii) Bonus and incentive compensation	(iii) Other reportable compensation				
1 KEITH BRICE	76,500.	66,652.	0.	13,992.	0.	157,144.	188,030.
2							
3							
4							
5							
6							
7							
8							
9							
10							
11							
12							
13							
14							
15							
16							

SCHEDULE O
(Form 990 or 990-EZ)

Supplemental Information to Form 990 or 990-EZ

OMB No 1545-0047

2011

Complete to provide information for responses to specific questions on
Form 990 or 990-EZ or to provide any additional information.
▶ Attach to Form 990 or 990-EZ.



Department of the Treasury
Internal Revenue Service

Name of the organization

MID STATE DEVELOPMENT CORPORATION

Employer identification number

95-3507734

**Pt VI, Line 8a ANY AND ALL BOARD MEETINGS AND EXECUTIVE COMMITTEE MEETINGS
ARE DOCUMENTED AND APPROVED. SUCH MEETING MINUTES ARE RETAINED
BY THE PRESIDENT OF THE ORGANIZATION.**

**Pt VI, Line 11a FORM 990 WAS REVIEWED BY THE PRESIDENT OF THE ORGANIZATION
IT WAS THEN PROVIDED TO THE ENTIRE BOARD DURING THE FEB BOARD MEETING
AT WHICH TIME THE AGENDA ALLOCATED AN APPROPRIATE AMOUNT OF TIME
FOR THE BOARD TO REVIEW AND HAVE AN OPPORTUNITY TO INQUIRE OR
COMMENT ON THE TAX RETURN**

**Pt VI, Line 12c ANNUALLY THE ATTORNEY FOR THE ORGANIZATION ATTENDS A BOARD
MEETING AT WHICH TIME ALL BOARD MEMBERS ARE TO REVIEW THE CONFLICT OF INTEREST
POLICY, SIGN, DATE AND RETURN TO THE ATTORNEY.**

**Pt VI, Line 15 COMPENSATION FOR THE PRESIDENT IS DETERMINED BY THE ORGANIZATION'S
EXECUTIVE COMMITTEE DURING ITS' REVIEW OF THE PERFORMANCE OF THE ORGANIZATION'S
PRESIDENT. THE EXECUTIVE COMMITTEE WILL PRESENT TO THE BOARD FOR APPROVAL.
ALL OTHER EMPLOYEES ARE REVIEWED ANNUALLY BY THE PRESIDENT OF THE
ORGANIZATION WITH THE APPROVAL FOR ANY COMPENSATION CHANGES SUBMITTED
TO AND APPROVED BY THE EXECUTIVE COMMITTEE.**

**Pt VI, Line 19 DOCUMENTS FOR THE ORGANIZATION THAT ARE TO BE CONSIDERED PUBLIC DOCUMENTS
(SUCH AS FORM 1023, FORM 990'S AND FINANCIAL STATEMENTS) ARE AVAILABLE BY REQUEST.**

Pt VI, Line 7a ORGANIZATION HAS MEMBERS MAKE ANNUAL ELECTIONS FOR ITS' OFFICERS

Pt VI, Line 7b ORGANIZATION HAS ANNUAL VOTING FOR ITS' MEMBERS

Schedule O (Form 990 or 990-EZ), Supplemental Information to Form 990 or 990-EZ
Form 990, Page 10, Line 24e All Other Expenses (continued)

Description	(A) Total	(B) Program services	(C) Management and general	(D) Fundraising
BANK SERVICE CHARGES	88.	0.	88.	0.
TAX SERVICE CUSTOMERS	1,442.	1,442.	0.	0.
CREDIT REPORTS	2,007.	2,007.	0.	0.
POSTAGE	2,760.	2,484.	276.	0.
DUES & SUBSCRIPTIONS	13,327.	11,994.	1,333.	0.
UTILITIES	4,966.	4,469.	497.	0.
TAXES AND LICENSE	255.	230.	25.	0.
TELEPHONE	7,084.	6,376.	708.	0.
WATER	0.	0.	0.	0.
TITLE FEES	1,782.	1,782.	0.	0.
COMMISSIONS EXPENSE	83,616.	83,616.	0.	0.
WEBSITE MAINTENANCE	0.	0.	0.	0.
COPIER LEASE	6,509.	5,858.	651.	0.
STORAGE / SHREDDING	1,820.	1,638.	182.	0.
SECURITY	360.	324.	36.	0.
ENVIRONMENTAL FEES	6,600.	6,600.	0.	0.
PRINTING	515.	515.	0.	0.
OFFICE SUPPLIES	3,295.	2,966.	329.	0.
DONATIONS	29,792.	0.	29,792.	0.
PROJECT REFUND	1,782.	1,782.	0.	0.
PROPERTY TAX	993.	894.	99.	0.
REPAIRS AND MAINTENANCE	500.	0.	500.	0.
APPRAISAL FEE	5,600.	5,600.	0.	0.

**Depreciation and Amortization
(Including Information on Listed Property)**

▶ See separate instructions. ▶ Attach to your tax return.

Name(s) shown on return

MID STATE DEVELOPMENT CORPORATION

Identifying number

95-3507734

Business or activity to which this form relates

Form 990 / Form 990EZ

Part I Election To Expense Certain Property Under Section 179

Note: If you have any listed property, complete Part V before you complete Part I

1	Maximum amount (see instructions)	1	
2	Total cost of section 179 property placed in service (see instructions)	2	
3	Threshold cost of section 179 property before reduction in limitation (see instructions)	3	
4	Reduction in limitation Subtract line 3 from line 2. If zero or less, enter -0-	4	
5	Dollar limitation for tax year Subtract line 4 from line 1. If zero or less, enter -0- If married filing separately, see instructions	5	
6	(a) Description of property	(b) Cost (business use only)	(c) Elected cost
7	Listed property Enter the amount from line 29	7	
8	Total elected cost of section 179 property Add amounts in column (c), lines 6 and 7	8	
9	Tentative deduction Enter the smaller of line 5 or line 8	9	
10	Carryover of disallowed deduction from line 13 of your 2010 Form 4562	10	
11	Business income limitation Enter the smaller of business income (not less than zero) or line 5 (see instrs)	11	
12	Section 179 expense deduction Add lines 9 and 10, but do not enter more than line 11	12	
13	Carryover of disallowed deduction to 2012 Add lines 9 and 10, less line 12	13	

Note: Do not use Part II or Part III below for listed property. Instead, use Part V

Part II Special Depreciation Allowance and Other Depreciation (Do not include listed property) (See instructions)

14	Special depreciation allowance for qualified property (other than listed property) placed in service during the tax year (see instructions)	14	
15	Property subject to section 168(f)(1) election	15	
16	Other depreciation (including ACRS)	16	

Part III MACRS Depreciation (Do not include listed property) (See instructions)

Section A

17	MACRS deductions for assets placed in service in tax years beginning before 2011	17	2,763.
18	If you are electing to group any assets placed in service during the tax year into one or more general asset accounts, check here <input type="checkbox"/>		

Section B - Assets Placed in Service During 2011 Tax Year Using the General Depreciation System

(a) Classification of property	(b) Month and year placed in service	(c) Basis for depreciation (business/investment use only - see instructions)	(d) Recovery period	(e) Convention	(f) Method	(g) Depreciation deduction
19a 3-year property						
b 5-year property						
c 7-year property		2,971.	7.0 yrs	MQ	200 DB	106.
d 10-year property						
e 15-year property			25 yrs		S/L	
f 20-year property			27.5 yrs	MM	S/L	
g 25-year property			27.5 yrs	MM	S/L	
h Residential rental property			39 yrs	MM	S/L	
i Nonresidential real property	05/12	241,064.	39 yrs	MM	S/L	2,318.
	09/12	22,728.	39.0yrs	MM	S/L	24.

Section C - Assets Placed in Service During 2011 Tax Year Using the Alternative Depreciation System

20a Class life					S/L	
b 12-year			12 yrs		S/L	
c 40-year			40 yrs	MM	S/L	

Part IV Summary (See instructions)

21	Listed property Enter amount from line 28	21	
22	Total Add amounts from line 12, lines 14 through 17, lines 19 and 20 in column (g), and line 21 Enter here and on the appropriate lines of your return Partnerships and S corporations - see instructions	22	5,228.
23	For assets shown above and placed in service during the current year, enter the portion of the basis attributable to section 263A costs	23	

Part V Listed Property (Include automobiles, certain other vehicles, certain computers, and property used for entertainment, recreation, or amusement)

Note: For any vehicle for which you are using the standard mileage rate or deducting lease expense, complete **only** 24a, 24b, columns (a) through (c) of Section A, all of Section B, and Section C if applicable

Section A – Depreciation and Other Information (Caution: See the instructions for limits for passenger automobiles)

24a Do you have evidence to support the business/investment use claimed?					<input type="checkbox"/> Yes	<input type="checkbox"/> No	24b If 'Yes,' is the evidence written?		<input type="checkbox"/> Yes	<input type="checkbox"/> No
(a) Type of property (list vehicles first)	(b) Date placed in service	(c) Business/investment use percentage	(d) Cost or other basis	(e) Basis for depreciation (business/investment use only)	(f) Recovery period	(g) Method/Convention	(h) Depreciation deduction	(i) Elected section 179 cost		
25 Special depreciation allowance for qualified listed property placed in service during the tax year and used more than 50% in a qualified business use (see instructions)								25		
26 Property used more than 50% in a qualified business use										
27 Property used 50% or less in a qualified business use										
28 Add amounts in column (h), lines 25 through 27. Enter here and on line 21, page 1								28		
29 Add amounts in column (i), line 26. Enter here and on line 7, page 1								29		

Section B – Information on Use of Vehicles

Complete this section for vehicles used by a sole proprietor, partner, or other 'more than 5% owner,' or related person. If you provided vehicles to your employees, first answer the questions in Section C to see if you meet an exception to completing this section for those vehicles.

30 Total business/investment miles driven during the year (do not include commuting miles)	(a) Vehicle 1		(b) Vehicle 2		(c) Vehicle 3		(d) Vehicle 4		(e) Vehicle 5		(f) Vehicle 6	
31 Total commuting miles driven during the year												
32 Total other personal (noncommuting) miles driven												
33 Total miles driven during the year. Add lines 30 through 32												
34 Was the vehicle available for personal use during off-duty hours?	Yes	No	Yes	No	Yes	No	Yes	No	Yes	No	Yes	No
35 Was the vehicle used primarily by a more than 5% owner or related person?												
36 Is another vehicle available for personal use?												

Section C – Questions for Employers Who Provide Vehicles for Use by Their Employees

Answer these questions to determine if you meet an exception to completing Section B for vehicles used by employees who are not more than 5% owners or related persons (see instructions)

37 Do you maintain a written policy statement that prohibits all personal use of vehicles, including commuting, by your employees?		Yes	No
38 Do you maintain a written policy statement that prohibits personal use of vehicles, except commuting, by your employees? See the instructions for vehicles used by corporate officers, directors, or 1% or more owners.			
39 Do you treat all use of vehicles by employees as personal use?			
40 Do you provide more than five vehicles to your employees, obtain information from your employees about the use of the vehicles, and retain the information received?			
41 Do you meet the requirements concerning qualified automobile demonstration use? (See instructions.)			
Note: If your answer to 37, 38, 39, 40, or 41 is 'Yes,' do not complete Section B for the covered vehicles.			

Part VI Amortization

(a) Description of costs	(b) Date amortization begins	(c) Amortizable amount	(d) Code section	(e) Amortization period or percentage	(f) Amortization for this year
42 Amortization of costs that begins during your 2011 tax year (see instructions)					
43 Amortization of costs that began before your 2011 tax year					43
44 Total. Add amounts in column (f). See the instructions for where to report					44