



See a Social Security Number? Say Something!
Report Privacy Problems to <https://public.resource.org/privacy>
Or call the IRS Identity Theft Hotline at 1-800-908-4490



Return of Organization Exempt From Income Tax

OMB No 1545-0047

2011

Open to Public
InspectionDepartment of the Treasury
Internal Revenue ServiceUnder section 501(c), 527, or 4947(a)(1) of the Internal Revenue Code (except black lung
benefit trust or private foundation)

▶ The organization may have to use a copy of this return to satisfy state reporting requirements.

A For the 2011 calendar year, or tax year beginning , 2011, and ending , 20

B Check if applicable.

- ☐ Address change
☐ Name change
☐ Initial return
☐ Terminated
☐ Amended return
☐ Application pending

C Name of organization MODERN WOODMEN OF AMERICA BUILDING ASSOCIATION
COLORADO SPRINGS CAMP 7226D Employer identification number
84-0269370

Doing Business As

Number and street (or P.O. box if mail is not delivered to street address)

Room/suite

P.O. BOX 7764

E Telephone number
() -

City or town, state or country, and ZIP + 4

COLORADO SPRINGS, CO 80933-7764

G Gross receipts \$ 36,273.

F Name and address of principal officer:

H(a) Is this a group return for affiliates? ☐ Yes ☒ NoH(b) Are all affiliates included? ☐ Yes ☐ No

If "No," attach a list. (see instructions)

I Tax-exempt status: 501(c)(3) ☒ 501(c)(2) ☐ (insert no.) 4947(a)(1) or 527

J Website: ▶ N/A

H(c) Group exemption number ▶

K Form of organization: Corporation ☐ Trust ☒ Association ☐ Other ▶ L Year of formation: 1989 M State of legal domicile: CO

Part I Summary

Activities & Governance	1	Briefly describe the organization's mission or most significant activities: HOLD INCOME GENERATING PROPERTY AND TURN OVER NET INCOME TO EXEMPT ORGANIZATIONS.		
	2	Check this box <input type="checkbox"/> if the organization discontinued its operations or disposed of more than 25% of its net assets.		
	3	Number of voting members of the governing body (Part VI, line 1a)	7.	
	4	Number of independent voting members of the governing body (Part VI, line 1b)	7.	
	5	Total number of individuals employed in calendar year 2011 (Part V, line 2a)	0	
	6	Total number of volunteers (estimate if necessary)	0	
	7a	Total unrelated business revenue from Part VIII, column (C), line 12	0	
b Net unrelated business taxable income from Form 990-T, line 34		0		
Revenue	8	Contributions and grants (Part VIII, line 1h)	0	0
	9	Program service revenue (Part VIII, line 2g)	0	0
	10	Investment income (Part VIII, column (A), lines 3, 4, and 7d)	25,735.	24,273.
	11	Other revenue (Part VIII, column (A), lines 5, 6d, 8c, 9c, 10c, and 11e)	-42,278.	-29,412.
	12	Total revenue - add lines 8 through 11 (must equal Part VIII, column (A), line 12)	-16,543.	-5,139.
	13	Grants and similar amounts paid (Part IX, column (A), lines 1-3)	49,111.	39,877.
	14	Benefits paid to or for members (Part IX, column (A), line 4)	0	0
	15	Salaries, other compensation, employee benefits (Part IX, column (A), lines 5-10)	0	0
	16a	Professional fundraising fees (Part IX, column (A), line 11e)	0	0
	16b	Total fundraising expenses (Part IX, column (D), line 25)	0	0
Expenses	17	Other expenses (Part IX, column (A), lines 11a-j (if 24a))	0	1,156.
	18	Total expenses. Add lines 13-17 (must equal Part IX, column (A), line 25)	49,111.	41,033.
	19	Revenue less expenses. Subtract line 18 from line 12	-65,654.	-46,172.
Net Assets or Fund Balances	20	Total assets (Part X, line 16)	Beginning of Current Year 1,176,843.	End of Year 1,130,671.
	21	Total liabilities (Part X, line 26)	0	0
	22	Net assets or fund balances. Subtract line 21 from line 20.	1,176,843.	1,130,671.

Part II Signature Block

Under penalties of perjury, I declare that I have examined this return, including accompanying schedules and statements, and to the best of my knowledge and belief, it is true, correct, and complete. Declaration of preparer (other than officer) is based on all information of which preparer has any knowledge.

Sign Here ☒ Signature of officer Robert E Hilty Date 7-25-12
☒ Type or print name and title Robert E Hilty, President

Paid Preparer Use Only Preparer's name John M Kopenhaver Preparer's signature [Signature] Date 7/24/12 Check ☐ if self-employed PTIN P00557762
 Firm's name WILLIAMS AND KOPENHAVER, P.C. Firm's EIN 84-0913616
 Firm's address 524 S. CASCADE AVE, SUITE 7 COLORADO SPRINGS, CO 80903 Phone no. 719-635-0440

May the IRS discuss this return with the preparer shown above? (see instructions) ☒ Yes ☐ No

For Paperwork Reduction Act Notice, see the separate instructions.

Form 990 (2011)

Part III Statement of Program Service AccomplishmentsCheck if Schedule O contains a response to any question in this Part III ☐**1** Briefly describe the organization's mission:

HOLD INCOME GENERATING PROPERTY AND TURN OVER NET INCOME TO EXEMPT ORGANIZATIONS.

2 Did the organization undertake any significant program services during the year which were not listed on the prior Form 990 or 990-EZ? ☐ Yes ☒ No

If "Yes," describe these new services on Schedule O.

3 Did the organization cease conducting, or make significant changes in how it conducts, any program services? ☐ Yes ☒ No

If "Yes," describe these changes on Schedule O.

4 Describe the organization's program service accomplishments for each of its three largest program services, as measured by expenses. Section 501(c)(3) and 501(c)(4) organizations and section 4947(a)(1) trusts are required to report the amount of grants and allocations to others, the total expenses, and revenue, if any, for each program service reported.

4a (Code:) (Expenses \$ 13,877. including grants of \$ 13,877.) (Revenue \$)
TRANSFERRED FUNDS TO CAMP #7226 FOR MEMBERSHIP ACTIVITIES

4b (Code:) (Expenses \$ 26,000. including grants of \$ 26,000.) (Revenue \$)
FUNDS GRANTED TO LOCAL 501(C)(3) ORGANIZATIONS OR EXPENDED ON
THEIR BEHALF FOR CHARITABLE PURPOSES

4c (Code:) (Expenses \$ including grants of \$) (Revenue \$)

4d Other program services (Describe in Schedule O.)

(Expenses \$ including grants of \$) (Revenue \$)

4e Total program service expenses ▶ 39,877.

Part IV Checklist of Required Schedules

	Yes	No
1 Is the organization described in section 501(c)(3) or 4947(a)(1) (other than a private foundation)? If "Yes," complete Schedule A	1	X
2 Is the organization required to complete Schedule B, Schedule of Contributors (see instructions)?	2	X
3 Did the organization engage in direct or indirect political campaign activities on behalf of or in opposition to candidates for public office? If "Yes," complete Schedule C, Part I	3	X
4 Section 501(c)(3) organizations. Did the organization engage in lobbying activities, or have a section 501(h) election in effect during the tax year? If "Yes," complete Schedule C, Part II	4	
5 Is the organization a section 501(c)(4), 501(c)(5), or 501(c)(6) organization that receives membership dues, assessments, or similar amounts as defined in Revenue Procedure 98-19? If "Yes," complete Schedule C, Part III	5	
6 Did the organization maintain any donor advised funds or any similar funds or accounts for which donors have the right to provide advice on the distribution or investment of amounts in such funds or accounts? If "Yes," complete Schedule D, Part I	6	X
7 Did the organization receive or hold a conservation easement, including easements to preserve open space, the environment, historic land areas, or historic structures? If "Yes," complete Schedule D, Part II	7	X
8 Did the organization maintain collections of works of art, historical treasures, or other similar assets? If "Yes," complete Schedule D, Part III	8	X
9 Did the organization report an amount in Part X, line 21; serve as a custodian for amounts not listed in Part X; or provide credit counseling, debt management, credit repair, or debt negotiation services? If "Yes," complete Schedule D, Part IV	9	X
10 Did the organization, directly or through a related organization, hold assets in temporarily restricted endowments, permanent endowments, or quasi-endowments? If "Yes," complete Schedule D, Part V	10	X
11 If the organization's answer to any of the following questions is "Yes," then complete Schedule D, Parts VI, VII, VIII, IX, or X as applicable.		
a Did the organization report an amount for land, buildings, and equipment in Part X, line 10? If "Yes," complete Schedule D, Part VI	11a	X
b Did the organization report an amount for investments—other securities in Part X, line 12 that is 5% or more of its total assets reported in Part X, line 16? If "Yes," complete Schedule D, Part VII	11b	X
c Did the organization report an amount for investments—program related in Part X, line 13 that is 5% or more of its total assets reported in Part X, line 16? If "Yes," complete Schedule D, Part VIII	11c	X
d Did the organization report an amount for other assets in Part X, line 15 that is 5% or more of its total assets reported in Part X, line 16? If "Yes," complete Schedule D, Part IX	11d	X
e Did the organization report an amount for other liabilities in Part X, line 25? If "Yes," complete Schedule D, Part X	11e	X
f Did the organization's separate or consolidated financial statements for the tax year include a footnote that addresses the organization's liability for uncertain tax positions under FIN 48 (ASC 740)? If "Yes," complete Schedule D, Part X	11f	X
12a Did the organization obtain separate, independent audited financial statements for the tax year? If "Yes," complete Schedule D, Parts XI, XII, and XIII	12a	X
b Was the organization included in consolidated, independent audited financial statements for the tax year? If "Yes," and if the organization answered "No" to line 12a, then completing Schedule D, Parts XI, XII, and XIII is optional	12b	X
13 Is the organization a school described in section 170(b)(1)(A)(ii)? If "Yes," complete Schedule E	13	X
14a Did the organization maintain an office, employees, or agents outside of the United States?	14a	X
b Did the organization have aggregate revenues or expenses of more than \$10,000 from grantmaking, fundraising, business, investment, and program service activities outside the United States, or aggregate foreign investments valued at \$100,000 or more? If "Yes," complete Schedule F, Parts I and IV	14b	X
15 Did the organization report on Part IX, column (A), line 3, more than \$5,000 of grants or assistance to any organization or entity located outside the United States? If "Yes," complete Schedule F, Parts II and IV	15	X
16 Did the organization report on Part IX, column (A), line 3, more than \$5,000 of aggregate grants or assistance to individuals located outside the United States? If "Yes," complete Schedule F, Parts III and IV	16	X
17 Did the organization report a total of more than \$15,000 of expenses for professional fundraising services on Part IX, column (A), lines 6 and 11e? If "Yes," complete Schedule G, Part I (see instructions)	17	X
18 Did the organization report more than \$15,000 total of fundraising event gross income and contributions on Part VIII, lines 1c and 8a? If "Yes," complete Schedule G, Part II	18	X
19 Did the organization report more than \$15,000 of gross income from gaming activities on Part VIII, line 9a? If "Yes," complete Schedule G, Part III	19	X
20a Did the organization operate one or more hospital facilities? If "Yes," complete Schedule H	20a	X
b If "Yes" to line 20a, did the organization attach a copy of its audited financial statements to this return?	20b	

Part IV Checklist of Required Schedules (continued)

	Yes	No
21 Did the organization report more than \$5,000 of grants and other assistance to any government or organization in the United States on Part IX, column (A), line 1? <i>If "Yes," complete Schedule I, Parts I and II.</i>	21 X	
22 Did the organization report more than \$5,000 of grants and other assistance to individuals in the United States on Part IX, column (A), line 2? <i>If "Yes," complete Schedule I, Parts I and III.</i>	22	X
23 Did the organization answer "Yes" to Part VII, Section A, line 3, 4, or 5 about compensation of the organization's current and former officers, directors, trustees, key employees, and highest compensated employees? <i>If "Yes," complete Schedule J.</i>	23	X
24 a Did the organization have a tax-exempt bond issue with an outstanding principal amount of more than \$100,000 as of the last day of the year, that was issued after December 31, 2002? <i>If "Yes," answer lines 24b through 24d and complete Schedule K. If "No," go to line 25.</i>	24a	X
b Did the organization invest any proceeds of tax-exempt bonds beyond a temporary period exception?	24b	
c Did the organization maintain an escrow account other than a refunding escrow at any time during the year to defease any tax-exempt bonds?	24c	
d Did the organization act as an "on behalf of" issuer for bonds outstanding at any time during the year?	24d	
25 a Section 501(c)(3) and 501(c)(4) organizations. Did the organization engage in an excess benefit transaction with a disqualified person during the year? <i>If "Yes," complete Schedule L, Part I.</i>	25a	
b Is the organization aware that it engaged in an excess benefit transaction with a disqualified person in a prior year, and that the transaction has not been reported on any of the organization's prior Forms 990 or 990-EZ? <i>If "Yes," complete Schedule L, Part I.</i>	25b	
26 Was a loan to or by a current or former officer, director, trustee, key employee, highly compensated employee, or disqualified person outstanding as of the end of the organization's tax year? <i>If "Yes," complete Schedule L, Part II.</i>	26	X
27 Did the organization provide a grant or other assistance to an officer, director, trustee, key employee, substantial contributor or employee thereof, a grant selection committee member, or to a 35% controlled entity or family member of any of these persons? <i>If "Yes," complete Schedule L, Part III.</i>	27	X
28 Was the organization a party to a business transaction with one of the following parties (see Schedule L, Part IV instructions for applicable filing thresholds, conditions, and exceptions):		
a A current or former officer, director, trustee, or key employee? <i>If "Yes," complete Schedule L, Part IV.</i>	28a	X
b A family member of a current or former officer, director, trustee, or key employee? <i>If "Yes," complete Schedule L, Part IV.</i>	28b	X
c An entity of which a current or former officer, director, trustee, or key employee (or a family member thereof) was an officer, director, trustee, or direct or indirect owner? <i>If "Yes," complete Schedule L, Part IV.</i>	28c	X
29 Did the organization receive more than \$25,000 in non-cash contributions? <i>If "Yes," complete Schedule M.</i>	29	X
30 Did the organization receive contributions of art, historical treasures, or other similar assets, or qualified conservation contributions? <i>If "Yes," complete Schedule M.</i>	30	X
31 Did the organization liquidate, terminate, or dissolve and cease operations? <i>If "Yes," complete Schedule N, Part I.</i>	31	X
32 Did the organization sell, exchange, dispose of, or transfer more than 25% of its net assets? <i>If "Yes," complete Schedule N, Part II.</i>	32	X
33 Did the organization own 100% of an entity disregarded as separate from the organization under Regulations sections 301.7701-2 and 301.7701-3? <i>If "Yes," complete Schedule R, Part I.</i>	33	X
34 Was the organization related to any tax-exempt or taxable entity? <i>If "Yes," complete Schedule R, Parts II, III, IV, and V, line 1.</i>	34 X	
35 a Did the organization have a controlled entity within the meaning of section 512(b)(13)?	35a	X
b Did the organization receive any payment from or engage in any transaction with a controlled entity within the meaning of section 512(b)(13)? <i>If "Yes," complete Schedule R, Part V, line 2.</i>	35b	X
36 Section 501(c)(3) organizations. Did the organization make any transfers to an exempt non-charitable related organization? <i>If "Yes," complete Schedule R, Part V, line 2.</i>	36	
37 Did the organization conduct more than 5% of its activities through an entity that is not a related organization and that is treated as a partnership for federal income tax purposes? <i>If "Yes," complete Schedule R, Part VI.</i>	37	X
38 Did the organization complete Schedule O and provide explanations in Schedule O for Part VI, lines 11 and 19? Note. All Form 990 filers are required to complete Schedule O.	38 X	

Form 990 (2011)

Part V Statements Regarding Other IRS Filings and Tax ComplianceCheck if Schedule O contains a response to any question in this Part V. ☐

		Yes	No
1a	Enter the number reported in Box 3 of Form 1096. Enter -0- if not applicable.	5	
b	Enter the number of Forms W-2G included in line 1a. Enter -0- if not applicable.	0	
c	Did the organization comply with backup withholding rules for reportable payments to vendors and reportable gaming (gambling) winnings to prize winners?		
2a	Enter the number of employees reported on Form W-3, Transmittal of Wage and Tax Statements, filed for the calendar year ending with or within the year covered by this return	0	
b	If at least one is reported on line 2a, did the organization file all required federal employment tax returns? Note. If the sum of lines 1a and 2a is greater than 250, you may be required to e-file (see instructions).		
3a	Did the organization have unrelated business gross income of \$1,000 or more during the year?		X
b	If "Yes," has it filed a Form 990-T for this year? If "No," provide an explanation in Schedule O		
4a	At any time during the calendar year, did the organization have an interest in, or a signature or other authority over, a financial account in a foreign country (such as a bank account, securities account, or other financial account)?		X
b	If "Yes," enter the name of the foreign country: ▶ See instructions for filing requirements for Form TD F 90-22.1, Report of Foreign Bank and Financial Accounts.		
5a	Was the organization a party to a prohibited tax shelter transaction at any time during the tax year?		X
b	Did any taxable party notify the organization that it was or is a party to a prohibited tax shelter transaction?		X
c	If "Yes" to line 5a or 5b, did the organization file Form 8886-T?		
6a	Does the organization have annual gross receipts that are normally greater than \$100,000, and did the organization solicit any contributions that were not tax deductible?		X
b	If "Yes," did the organization include with every solicitation an express statement that such contributions or gifts were not tax deductible?		
7	Organizations that may receive deductible contributions under section 170(c).		
a	Did the organization receive a payment in excess of \$75 made partly as a contribution and partly for goods and services provided to the payor?		X
b	If "Yes," did the organization notify the donor of the value of the goods or services provided?		
c	Did the organization sell, exchange, or otherwise dispose of tangible personal property for which it was required to file Form 8282?		X
d	If "Yes," indicate the number of Forms 8282 filed during the year	7d	
e	Did the organization receive any funds, directly or indirectly, to pay premiums on a personal benefit contract?		X
f	Did the organization, during the year, pay premiums, directly or indirectly, on a personal benefit contract?		X
g	If the organization received a contribution of qualified intellectual property, did the organization file Form 8899 as required?		
h	If the organization received a contribution of cars, boats, airplanes, or other vehicles, did the organization file a Form 1098-C?		
8	Sponsoring organizations maintaining donor advised funds and section 509(a)(3) supporting organizations. Did the supporting organization, or a donor advised fund maintained by a sponsoring organization, have excess business holdings at any time during the year?		X
9	Sponsoring organizations maintaining donor advised funds.		
a	Did the organization make any taxable distributions under section 4966?		
b	Did the organization make a distribution to a donor, donor advisor, or related person?		
10	Section 501(c)(7) organizations. Enter:		
a	Initiation fees and capital contributions included on Part VIII, line 12	10a	
b	Gross receipts, included on Form 990, Part VIII, line 12, for public use of club facilities	10b	
11	Section 501(c)(12) organizations. Enter:		
a	Gross income from members or shareholders	11a	
b	Gross income from other sources (Do not net amounts due or paid to other sources against amounts due or received from them.)	11b	
12a	Section 4947(a)(1) non-exempt charitable trusts. Is the organization filing Form 990 in lieu of Form 1041?	12a	
b	If "Yes," enter the amount of tax-exempt interest received or accrued during the year	12b	
13	Section 501(c)(29) qualified nonprofit health insurance issuers.		
a	Is the organization licensed to issue qualified health plans in more than one state? Note. See the instructions for additional information the organization must report on Schedule O.		
b	Enter the amount of reserves the organization is required to maintain by the states in which the organization is licensed to issue qualified health plans	13b	
c	Enter the amount of reserves on hand	13c	
14a	Did the organization receive any payments for indoor tanning services during the tax year?	14a	X
b	If "Yes," has it filed a Form 720 to report these payments? If "No," provide an explanation in Schedule O	14b	

Part VI Governance, Management, and Disclosure For each "Yes" response to lines 2 through 7b below, and for a "No" response to line 8a, 8b, or 10b below, describe the circumstances, processes, or changes in Schedule O. See instructions.

Check if Schedule O contains a response to any question in this Part VI. ☐

Section A. Governing Body and Management

		Yes	No
1a Enter the number of voting members of the governing body at the end of the tax year. If there are	1a 7		
material differences in voting rights among members of the governing body, or if the governing body delegated broad authority to an executive committee or similar committee, explain in Schedule O.			
b Enter the number of voting members included in line 1a, above, who are independent	1b 7		
2 Did any officer, director, trustee, or key employee have a family relationship or a business relationship with any other officer, director, trustee, or key employee?	2		X
3 Did the organization delegate control over management duties customarily performed by or under the direct supervision of officers, directors, or trustees, or key employees to a management company or other person? . . .	3		X
4 Did the organization make any significant changes to its governing documents since the prior Form 990 was filed?	4		X
5 Did the organization become aware during the year of a significant diversion of the organization's assets?	5		X
6 Did the organization have members or stockholders?	6		X
7a Did the organization have members, stockholders, or other persons who had the power to elect or appoint one or more members of the governing body?	7a		X
b Are any governance decisions of the organization reserved to (or subject to approval by) members, stockholders, or persons other than the governing body?	7b		X
8 Did the organization contemporaneously document the meetings held or written actions undertaken during the year by the following:			
a The governing body?	8a	X	
b Each committee with authority to act on behalf of the governing body?	8b	X	
9 Is there any officer, director, trustee, or key employee listed in Part VII, Section A, who cannot be reached at the organization's mailing address? If "Yes," provide the names and addresses in Schedule O	9		X

Section B. Policies (This Section B requests information about policies not required by the Internal Revenue Code.)

		Yes	No
10a Did the organization have local chapters, branches, or affiliates?	10a		X
b If "Yes," did the organization have written policies and procedures governing the activities of such chapters, affiliates, and branches to ensure their operations are consistent with the organization's exempt purposes? . . .	10b		
11a Has the organization provided a complete copy of this Form 990 to all members of its governing body before filing the form? . .	11a	X	
b Describe in Schedule O the process, if any, used by the organization to review this Form 990.			
12a Did the organization have a written conflict of interest policy? If "No," go to line 13	12a		X
b Were officers, directors, or trustees, and key employees required to disclose annually interests that could give rise to conflicts?	12b		
c Did the organization regularly and consistently monitor and enforce compliance with the policy? If "Yes," describe in Schedule O how this was done	12c		
13 Did the organization have a written whistleblower policy?	13		X
14 Did the organization have a written document retention and destruction policy?	14		X
15 Did the process for determining compensation of the following persons include a review and approval by independent persons, comparability data, and contemporaneous substantiation of the deliberation and decision?			
a The organization's CEO, Executive Director, or top management official	15a		
b Other officers or key employees of the organization	15b		
If "Yes" to line 15a or 15b, describe the process in Schedule O (see instructions.)			
16a Did the organization invest in, contribute assets to, or participate in a joint venture or similar arrangement with a taxable entity during the year?	16a		X
b If "Yes," did the organization follow a written policy or procedure requiring the organization to evaluate its participation in joint venture arrangements under applicable federal tax law, and take steps to safeguard the organization's exempt status with respect to such arrangements?	16b		

Section C. Disclosure

17 List the states with which a copy of this Form 990 is required to be filed ☒ CO,

18 Section 6104 requires an organization to make its Forms 1023 (or 1024 if applicable), 990, and 990-T (Section 501(c)(3)s only) available for public inspection. Indicate how you made these available. Check all that apply.
☐ Own website ☐ Another's website ☒ Upon request

19 Describe in Schedule O whether (and if so, how), the organization made its governing documents, conflict of interest policy, and financial statements available to the public during the tax year.

20 State the name, physical address, and telephone number of the person who possesses the books and records of the organization: **ROBERT E. HILTY 5407 CROOKED ARROW LANE COLORADO SPRINGS, CO 80915 719-596-1503**

Part VII Compensation of Officers, Directors, Trustees, Key Employees, Highest Compensated Employees, and Independent ContractorsCheck if Schedule O contains a response to any question in this Part VII ☒ X**Section A. Officers, Directors, Trustees, Key Employees, and Highest Compensated Employees****1a** Complete this table for all persons required to be listed. Report compensation for the calendar year ending with or within the organization's tax year.

- List all of the organization's **current** officers, directors, trustees (whether individuals or organizations), regardless of amount of compensation. Enter -0- in columns (D), (E), and (F) if no compensation was paid.
- List all of the organization's **current** key employees, if any. See instructions for definition of "key employee."
- List the organization's five **current** highest compensated employees (other than an officer, director, trustee, or key employee) who received reportable compensation (Box 5 of Form W-2 and/or Box 7 of Form 1099-MISC) of more than \$100,000 from the organization and any related organizations.
- List all of the organization's **former** officers, key employees, and highest compensated employees who received more than \$100,000 of reportable compensation from the organization and any related organizations.
- List all of the organization's **former directors or trustees** that received, in the capacity as a former director or trustee of the organization, more than \$10,000 of reportable compensation from the organization and any related organizations.

List persons in the following order: individual trustees or directors; institutional trustees; officers; key employees; highest compensated employees; and former such persons.

☐ Check this box if neither the organization nor any related organization compensated any current officer, director, or trustee.

(A) Name and Title	(B) Average hours per week (describe hours for related organizations in Schedule O)	(C) Position (do not check more than one box, unless person is both an officer and a director/trustee)						(D) Reportable compensation from the organization (W-2/1099-MISC)	(E) Reportable compensation from related organizations (W-2/1099-MISC)	(F) Estimated amount of other compensation from the organization and related organizations
		Individual trustee or director	Institutional trustee	Officer	Key employee	Highest compensated employee	Former			
(1) ROBERT E. HILTY PRESIDENT	1.00	X		X				1,200.	0	0
(2) KAREN SEAY BOARD MEMBER	1.00	X						1,200.	0	0
(3) JIM DUVE BOARD MEMBER	1.00	X						50.	0	0
(4) GORDON HERRMANN BOARD MEMBER	1.00	X						1,200.	0	0
(5) CAROLYN GIBBENS BOARD MEMBER	1.00	X						1,200.	0	0
(6) CONNIE DUEKER BOARD MEMBER	1.00	X						1,100.	0	0
(7) ARTHUR GIBBENS BOARD MEMBER	1.00	X						0	0	0
(8)										
(9)										
(10)										
(11)										
(12)										
(13)										
(14)										

Part VII Section A. Officers, Directors, Trustees, Key Employees, and Highest Compensated Employees (continued)

[illegible]

2	Total number of individuals (including but not limited to those listed above) who received more than \$100,000 of reportable compensation from the organization	0
---	---	---

3 Did the organization list any **former** officer, director, or trustee, key employee, or highest compensated employee on line 1a? If "Yes," complete Schedule J for such individual

4 For any individual listed on line 1a, is the sum of reportable compensation and other compensation from the organization and related organizations greater than \$150,000? If "Yes," complete Schedule J for such individual.

5 Did any person listed on line 1a receive or accrue compensation from any unrelated organization or individual for services rendered to the organization? If "Yes," complete Schedule J for such person

	Yes	No
3		X
4		X
5		X

Section B. Independent Contractors

1 Complete this table for your five highest compensated independent contractors that received more than \$100,000 of compensation from the organization. Report compensation for the calendar year ending with or within the organization's tax year.

(A) Name and business address	(B) Description of services	(C) Compensation
2 Total number of independent contractors (including but not limited to those listed above) who received more than \$100,000 in compensation from the organization ▶ 0		

Part VIII Statement of Revenue

			(A) Total revenue	(B) Related or exempt function revenue	(C) Unrelated business revenue	(D) Revenue excluded from tax under sections 512, 513, or 514
Contributions, Gifts, Grants and Other Similar Amounts	1a	Federated campaigns 1a				
	b	Membership dues 1b				
	c	Fundraising events 1c				
	d	Related organizations 1d				
	e	Government grants (contributions) 1e				
	f	All other contributions, gifts, grants, and similar amounts not included above 1f				
	g	Noncash contributions included in lines 1a-1f \$				
	h	Total. Add lines 1a-1f	0			
Program Service Revenue	Business Code					
	2a					
	b					
	c					
	d					
	e					
	f	All other program service revenue				
	g	Total. Add lines 2a-2f	0			
Other Revenue	3	Investment income (including dividends, interest, and other similar amounts). ATTACHMENT 1	24,273.			
	4	Income from investment of tax-exempt bond proceeds	0			
	5	Royalties	0			
		(i) Real (ii) Personal				
	6a	Gross rents 12,000.				
	b	Less: rental expenses 41,412.				
	c	Rental income or (loss) -29,412.				
	d	Net rental income or (loss)	-29,412.			
		(i) Securities (ii) Other				
	7a	Gross amount from sales of assets other than inventory				
	b	Less: cost or other basis and sales expenses				
	c	Gain or (loss)				
	d	Net gain or (loss)	0			
	8a	Gross income from fundraising events (not including \$ of contributions reported on line 1c). See Part IV, line 18 a				
	b	Less: direct expenses b				
	c	Net income or (loss) from fundraising events	0			
	9a	Gross income from gaming activities. See Part IV, line 19 a				
	b	Less: direct expenses b				
	c	Net income or (loss) from gaming activities	0			
	10a	Gross sales of inventory, less returns and allowances a				
b	Less: cost of goods sold b					
c	Net income or (loss) from sales of inventory	0				
Miscellaneous Revenue		Business Code				
11a						
b						
c						
d	All other revenue					
e	Total. Add lines 11a-11d	0				
12	Total revenue. See instructions	-5,139.				

Part IX Statement of Functional Expenses

Section 501(c)(3) and 501(c)(4) organizations must complete all columns. All other organizations must complete column (A) but are not required to complete columns (B), (C), and (D).

Check if Schedule O contains a response to any question in this Part IX ☐

Do not include amounts reported on lines 6b, 7b, 8b, 9b, and 10b of Part VIII.	(A) Total expenses	(B) Program service expenses	(C) Management and general expenses	(D) Fundraising expenses
1 Grants and other assistance to governments and organizations in the United States. See Part IV, line 21.	39,877.			
2 Grants and other assistance to individuals in the United States. See Part IV, line 22.	0			
3 Grants and other assistance to governments, organizations, and individuals outside the United States. See Part IV, lines 15 and 16.	0			
4 Benefits paid to or for members.	0			
5 Compensation of current officers, directors, trustees, and key employees.	0			
6 Compensation not included above, to disqualified persons (as defined under section 4958(f)(1)) and persons described in section 4958(c)(3)(B).	0			
7 Other salaries and wages.	0			
8 Pension plan accruals and contributions (include section 401(k) and 403(b) employer contributions).	0			
9 Other employee benefits.	0			
10 Payroll taxes.	0			
11 Fees for services (non-employees):				
a Management.	0			
b Legal.	0			
c Accounting.	0			
d Lobbying.	0			
e Professional fundraising services. See Part IV, line 17.	0			
f Investment management fees.	0			
g Other.	0			
12 Advertising and promotion.	0			
13 Office expenses.	0			
14 Information technology.	0			
15 Royalties.	0			
16 Occupancy.	0			
17 Travel.	0			
18 Payments of travel or entertainment expenses for any federal, state, or local public officials.	0			
19 Conferences, conventions, and meetings.	0			
20 Interest.	0			
21 Payments to affiliates.	0			
22 Depreciation, depletion, and amortization.	0			
23 Insurance.	0			
24 Other expenses. Itemize expenses not covered above. (List miscellaneous expenses in line 24e. If line 24e amount exceeds 10% of line 25, column (A) amount, list line 24e expenses on Schedule O.)				
a MISCELLANEOUS EXPENSES	1,156.			
b				
c				
d				
e All other expenses				
25 Total functional expenses. Add lines 1 through 24e.	41,033.			
26 Joint costs. Complete this line only if the organization reported in column (B) joint costs from a combined educational campaign and fundraising solicitation. Check here <input type="checkbox"/> if following SOP 98-2 (ASC 958-720).	0			

Part X Balance Sheet

		(A) Beginning of year		(B) End of year
Assets	1 Cash - non-interest-bearing	58,592.	1	57,775.
	2 Savings and temporary cash investments	50,326.	2	34,926.
	3 Pledges and grants receivable, net	0	3	0
	4 Accounts receivable, net	0	4	0
	5 Receivables from current and former officers, directors, trustees, key employees, and highest compensated employees. Complete Part II of Schedule L	0	5	0
	6 Receivables from other disqualified persons (as defined under section 4958(f)(1)), persons described in section 4958(c)(3)(B), and contributing employers and sponsoring organizations of section 501(c)(9) voluntary employees' beneficiary organizations (see instructions)	0	6	0
	7 Notes and loans receivable, net	785,852.	7	761,759.
	8 Inventories for sale or use	0	8	0
	9 Prepaid expenses and deferred charges	0	9	0
	10a Land, buildings, and equipment: cost or other basis. Complete Part VI of Schedule D	10a 310,176.		
	b Less: accumulated depreciation	10b 33,965.	10c	276,211.
	11 Investments - publicly traded securities	0	11	0
	12 Investments - other securities. See Part IV, line 11	0	12	0
	13 Investments - program-related. See Part IV, line 11	0	13	0
	14 Intangible assets	0	14	0
	15 Other assets. See Part IV, line 11	0	15	0
16 Total assets. Add lines 1 through 15 (must equal line 34)	1,176,843.	16	1,130,671.	
Liabilities	17 Accounts payable and accrued expenses	0	17	0
	18 Grants payable	0	18	0
	19 Deferred revenue	0	19	0
	20 Tax-exempt bond liabilities	0	20	0
	21 Escrow or custodial account liability. Complete Part IV of Schedule D	0	21	0
	22 Payables to current and former officers, directors, trustees, key employees, highest compensated employees, and disqualified persons. Complete Part II of Schedule L	0	22	0
	23 Secured mortgages and notes payable to unrelated third parties	0	23	0
	24 Unsecured notes and loans payable to unrelated third parties	0	24	0
	25 Other liabilities (including federal income tax, payables to related third parties, and other liabilities not included on lines 17-24). Complete Part X of Schedule D	0	25	0
	26 Total liabilities. Add lines 17 through 25	0	26	0
Net Assets or Fund Balances	Organizations that follow SFAS 117, check here <input checked="" type="checkbox"/> and complete lines 27 through 29, and lines 33 and 34.			
	27 Unrestricted net assets	1,176,843.	27	1,130,671.
	28 Temporarily restricted net assets	0	28	0
	29 Permanently restricted net assets	0	29	0
	Organizations that do not follow SFAS 117, check here <input type="checkbox"/> and complete lines 30 through 34.			
	30 Capital stock or trust principal, or current funds		30	
	31 Paid-in or capital surplus, or land, building, or equipment fund		31	
	32 Retained earnings, endowment, accumulated income, or other funds		32	
	33 Total net assets or fund balances	1,176,843.	33	1,130,671.
	34 Total liabilities and net assets/fund balances	1,176,843.	34	1,130,671.

Form 990 (2011)

Part XI Reconciliation of Net AssetsCheck if Schedule O contains a response to any question in this Part XI. ☐

1	Total revenue (must equal Part VIII, column (A), line 12)	1	-5,139.
2	Total expenses (must equal Part IX, column (A), line 25)	2	41,033.
3	Revenue less expenses. Subtract line 2 from line 1	3	-46,172.
4	Net assets or fund balances at beginning of year (must equal Part X, line 33, column (A))	4	1,176,843.
5	Other changes in net assets or fund balances (explain in Schedule O)	5	0
6	Net assets or fund balances at end of year. Combine lines 3, 4, and 5 (must equal Part X, line 33, column (B))	6	1,130,671.

Part XII Financial Statements and ReportingCheck if Schedule O contains a response to any question in this Part XII ☐

- 1** Accounting method used to prepare the Form 990: ☒ Cash ☐ Accrual ☐ Other _____
If the organization changed its method of accounting from a prior year or checked "Other," explain in Schedule O.
- 2a** Were the organization's financial statements compiled or reviewed by an independent accountant?
- b** Were the organization's financial statements audited by an independent accountant?
- c** If "Yes" to line 2a or 2b, does the organization have a committee that assumes responsibility for oversight of the audit, review, or compilation of its financial statements and selection of an independent accountant?
If the organization changed either its oversight process or selection process during the tax year, explain in Schedule O.
- d** If "Yes" to line 2a or 2b, check a box below to indicate whether the financial statements for the year were issued on a separate basis, consolidated basis, or both:
☐ Separate basis ☐ Consolidated basis ☐ Both consolidated and separate basis
- 3a** As a result of a federal award, was the organization required to undergo an audit or audits as set forth in the Single Audit Act and OMB Circular A-133?
- b** If "Yes," did the organization undergo the required audit or audits? If the organization did not undergo the required audit or audits, explain why in Schedule O and describe any steps taken to undergo such audits

	Yes	No
2a	<input checked="" type="checkbox"/>	<input type="checkbox"/>
2b	<input type="checkbox"/>	<input checked="" type="checkbox"/>
2c	<input type="checkbox"/>	<input type="checkbox"/>
3a	<input type="checkbox"/>	<input type="checkbox"/>
3b	<input type="checkbox"/>	<input type="checkbox"/>

Form **990** (2011)

**SCHEDULE D
(Form 990)**

Department of the Treasury
Internal Revenue Service

Supplemental Financial Statements

▶ **Complete if the organization answered "Yes," to Form 990,
Part IV, line 6, 7, 8, 9, 10, 11a, 11b, 11c, 11d, 11e, 11f, 12a, or 12b.**
▶ **Attach to Form 990. ▶ See separate instructions.**

OMB No. 1545-0047

2011

**Open to Public
Inspection**

Name of the organization **MODERN WOODMEN OF AMERICA BUILDING ASSOCIATION**
COLORADO SPRINGS CAMP 7226

Employer identification number
84-0269370

Part I Organizations Maintaining Donor Advised Funds or Other Similar Funds or Accounts. Complete if the organization answered "Yes" to Form 990, Part IV, line 6.

	(a) Donor advised funds	(b) Funds and other accounts
1 Total number at end of year		
2 Aggregate contributions to (during year)		
3 Aggregate grants from (during year)		
4 Aggregate value at end of year		
5 Did the organization inform all donors and donor advisors in writing that the assets held in donor advised funds are the organization's property, subject to the organization's exclusive legal control?		<input type="checkbox"/> Yes <input type="checkbox"/> No
6 Did the organization inform all grantees, donors, and donor advisors in writing that grant funds can be used only for charitable purposes and not for the benefit of the donor or donor advisor, or for any other purpose conferring impermissible private benefit?		<input type="checkbox"/> Yes <input type="checkbox"/> No

Part II Conservation Easements. Complete if the organization answered "Yes" to Form 990, Part IV, line 7.

1 Purpose(s) of conservation easements held by the organization (check all that apply).

<input type="checkbox"/> Preservation of land for public use (e.g., recreation or education)	<input type="checkbox"/> Preservation of an historically important land area
<input type="checkbox"/> Protection of natural habitat	<input type="checkbox"/> Preservation of a certified historic structure
<input type="checkbox"/> Preservation of open space	

2 Complete lines 2a through 2d if the organization held a qualified conservation contribution in the form of a conservation easement on the last day of the tax year.

	Held at the End of the Tax Year
a Total number of conservation easements	2a
b Total acreage restricted by conservation easements	2b
c Number of conservation easements on a certified historic structure included in (a)	2c
d Number of conservation easements included in (c) acquired after 8/17/06, and not on a historic structure listed in the National Register	2d

3 Number of conservation easements modified, transferred, released, extinguished, or terminated by the organization during the tax year ▶ _____

4 Number of states where property subject to conservation easement is located ▶ _____

5 Does the organization have a written policy regarding the periodic monitoring, inspection, handling of violations, and enforcement of the conservation easements it holds? ☐ Yes ☐ No

6 Staff and volunteer hours devoted to monitoring, inspecting, and enforcing conservation easements during the year ▶ _____

7 Amount of expenses incurred in monitoring, inspecting, and enforcing conservation easements during the year ▶ \$ _____

8 Does each conservation easement reported on line 2(d) above satisfy the requirements of section 170(h)(4)(B)(i) and section 170(h)(4)(B)(ii)? ☐ Yes ☐ No

9 In Part XIV, describe how the organization reports conservation easements in its revenue and expense statement, and balance sheet, and include, if applicable, the text of the footnote to the organization's financial statements that describes the organization's accounting for conservation easements.

Part III Organizations Maintaining Collections of Art, Historical Treasures, or Other Similar Assets. Complete if the organization answered "Yes" to Form 990, Part IV, line 8.

1a If the organization elected, as permitted under SFAS 116 (ASC 958), not to report in its revenue statement and balance sheet works of art, historical treasures, or other similar assets held for public exhibition, education, or research in furtherance of public service, provide, in Part XIV, the text of the footnote to its financial statements that describes these items.

b If the organization elected, as permitted under SFAS 116 (ASC 958), to report in its revenue statement and balance sheet works of art, historical treasures, or other similar assets held for public exhibition, education, or research in furtherance of public service, provide the following amounts relating to these items:

(i) Revenues included in Form 990, Part VIII, line 1 ▶ \$ _____

(ii) Assets included in Form 990, Part X ▶ \$ _____

2 If the organization received or held works of art, historical treasures, or other similar assets for financial gain, provide the following amounts required to be reported under SFAS 116 (ASC 958) relating to these items:

a Revenues included in Form 990, Part VIII, line 1 ▶ \$ _____

b Assets included in Form 990, Part X ▶ \$ _____

For Paperwork Reduction Act Notice, see the Instructions for Form 990.

Schedule D (Form 990) 2011

Part III Organizations Maintaining Collections of Art, Historical Treasures, or Other Similar Assets (continued)

3 Using the organization's acquisition, accession, and other records, check any of the following that are a significant use of its collection items (check all that apply):

- a ☐ Public exhibition d ☐ Loan or exchange programs
 b ☐ Scholarly research e ☐ Other _____
 c ☐ Preservation for future generations

4 Provide a description of the organization's collections and explain how they further the organization's exempt purpose in Part XIV.

5 During the year, did the organization solicit or receive donations of art, historical treasures, or other similar assets to be sold to raise funds rather than to be maintained as part of the organization's collection? ☐ Yes ☐ No

Part IV Escrow and Custodial Arrangements. Complete if the organization answered "Yes" to Form 990, Part IV, line 9, or reported an amount on Form 990, Part X, line 21.

1a Is the organization an agent, trustee, custodian or other intermediary for contributions or other assets not included on Form 990, Part X? ☐ Yes ☐ No

b If "Yes," explain the arrangement in Part XIV and complete the following table:

	Amount
c Beginning balance	1c
d Additions during the year	1d
e Distributions during the year	1e
f Ending balance	1f

2a Did the organization include an amount on Form 990, Part X, line 21? ☐ Yes ☐ No

b If "Yes," explain the arrangement in Part XIV.

Part V Endowment Funds. Complete if the organization answered "Yes" to Form 990, Part IV, line 10.

	(a) Current year	(b) Prior year	(c) Two years back	(d) Three years back	(e) Four years back
1a Beginning of year balance					
b Contributions					
c Net investment earnings, gains, and losses					
d Grants or scholarships					
e Other expenditures for facilities and programs					
f Administrative expenses					
g End of year balance					

2 Provide the estimated percentage of the current year end balance (line 1g, column (a)) held as:

- a Board designated or quasi-endowment ► _____ %
 b Permanent endowment ► _____ %
 c Temporarily restricted endowment ► _____ %

The percentages in lines 2a, 2b, and 2c should equal 100%.

3a Are there endowment funds not in the possession of the organization that are held and administered for the organization by:

- (i) unrelated organizations
 (ii) related organizations

	Yes	No
3a(i)		
3a(ii)		
3b		

b If "Yes" to 3a(ii), are the related organizations listed as required on Schedule R?

4 Describe in Part XIV the intended uses of the organization's endowment funds.

Part VI Land, Buildings, and Equipment. See Form 990, Part X, line 10.

Description of property	(a) Cost or other basis (investment)	(b) Cost or other basis (other)	(c) Accumulated depreciation	(d) Book value
1a Land	182,697.			182,697.
b Buildings	90,682.		20,090.	70,592.
c Leasehold improvements				
d Equipment	18,182.		8,151.	10,031.
e Other	18,615.		5,724.	12,891.
Total. Add lines 1a through 1e. (Column (d) must equal Form 990, Part X, column (B), line 10(c).)				276,211.

Schedule D (Form 990) 2011

Part VII Investments - Other Securities. See Form 990, Part X, line 12.

(a) Description of security or category (including name of security)	(b) Book value	(c) Method of valuation: Cost or end-of-year market value
(1) Financial derivatives		
(2) Closely-held equity interests		
(3) Other -----		
(A) -----		
(B) -----		
(C) -----		
(D) -----		
(E) -----		
(F) -----		
(G) -----		
(H) -----		
(I) -----		
Total. (Column (b) must equal Form 990, Part X, col. (B) line 12) ▶		

Part VIII Investments - Program Related. See Form 990, Part X, line 13.

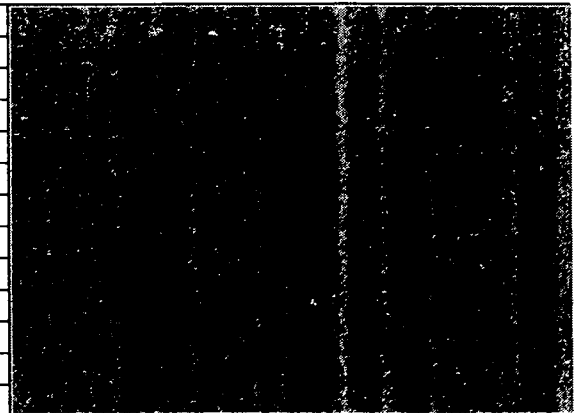
(a) Description of investment type	(b) Book value	(c) Method of valuation: Cost or end-of-year market value
(1)		
(2)		
(3)		
(4)		
(5)		
(6)		
(7)		
(8)		
(9)		
(10)		
Total. (Column (b) must equal Form 990, Part X, col. (B) line 13) ▶		

Part IX Other Assets. See Form 990, Part X, line 15.

(a) Description	(b) Book value
(1)	
(2)	
(3)	
(4)	
(5)	
(6)	
(7)	
(8)	
(9)	
(10)	
Total. (Column (b) must equal Form 990, Part X, col. (B) line 15.) ▶	

Part X Other Liabilities. See Form 990, Part X, line 25.

1. (a) Description of liability	(b) Book value
(1) Federal income taxes	
(2)	
(3)	
(4)	
(5)	
(6)	
(7)	
(8)	
(9)	
(10)	
(11)	
Total. (Column (b) must equal Form 990, Part X, col. (B) line 25.) ▶	



2. FIN 48 (ASC 740) Footnote. In Part XIV, provide the text of the footnote to the organization's financial statements that reports the organization's liability for uncertain tax positions under FIN 48 (ASC 740).

Part XI Reconciliation of Change in Net Assets from Form 990 to Audited Financial Statements

1	Total revenue (Form 990, Part VIII, column (A), line 12)	1	
2	Total expenses (Form 990, Part IX, column (A), line 25)	2	
3	Excess or (deficit) for the year. Subtract line 2 from line 1	3	
4	Net unrealized gains (losses) on investments	4	
5	Donated services and use of facilities	5	
6	Investment expenses	6	
7	Prior period adjustments	7	
8	Other (Describe in Part XIV.)	8	
9	Total adjustments (net). Add lines 4 through 8	9	
10	Excess or (deficit) for the year per audited financial statements. Combine lines 3 and 9	10	

Part XII Reconciliation of Revenue per Audited Financial Statements With Revenue per Return

1	Total revenue, gains, and other support per audited financial statements	1	
2	Amounts included on line 1 but not on Form 990, Part VIII, line 12:		
a	Net unrealized gains on investments	2a	
b	Donated services and use of facilities	2b	
c	Recoveries of prior year grants	2c	
d	Other (Describe in Part XIV.)	2d	
e	Add lines 2a through 2d	2e	
3	Subtract line 2e from line 1	3	
4	Amounts included on Form 990, Part VIII, line 12, but not on line 1:		
a	Investment expenses not included on Form 990, Part VIII, line 7b	4a	
b	Other (Describe in Part XIV.)	4b	
c	Add lines 4a and 4b	4c	
5	Total revenue. Add lines 3 and 4c. (This must equal Form 990, Part I, line 12.)	5	

Part XIII Reconciliation of Expenses per Audited Financial Statements With Expenses per Return

1	Total expenses and losses per audited financial statements	1	
2	Amounts included on line 1 but not on Form 990, Part IX, line 25:		
a	Donated services and use of facilities	2a	
b	Prior year adjustments	2b	
c	Other losses	2c	
d	Other (Describe in Part XIV.)	2d	
e	Add lines 2a through 2d	2e	
3	Subtract line 2e from line 1	3	
4	Amounts included on Form 990, Part IX, line 25, but not on line 1:		
a	Investment expenses not included on Form 990, Part VIII, line 7b	4a	
b	Other (Describe in Part XIV.)	4b	
c	Add lines 4a and 4b	4c	
5	Total expenses. Add lines 3 and 4c. (This must equal Form 990, Part I, line 18.)	5	

Part XIV Supplemental Information

Complete this part to provide the descriptions required for Part II, lines 3, 5, and 9; Part III, lines 1a and 4; Part IV, lines 1b and 2b; Part V, line 4; Part X, line 2; Part XI, line 8; Part XII, lines 2d and 4b; and Part XIII, lines 2d and 4b. Also complete this part to provide any additional information.

Part XIV Supplemental Information *(continued)*

**SCHEDULE I
(Form 990)**

**Grants and Other Assistance to Organizations,
Governments, and Individuals in the United States**

Complete if the organization answered "Yes" to Form 990, Part IV, line 21 or 22.
▶ Attach to Form 990.

Department of the Treasury
Internal Revenue Service

Name of the organization
MODERN WOODMEN OF AMERICA BUILDING ASSOCIATION
COLORADO SPRINGS CAMP 7226

Employer identification number

84-0269370

OMB No. 1545-0047

2011

Open to Public
Inspection

Part I General Information on Grants and Assistance

- 1 Does the organization maintain records to substantiate the amount of the grants or assistance, the grantees' eligibility for the grants or assistance, and the selection criteria used to award the grants or assistance? ☐ Yes ☐ No
- 2 Describe in Part IV the organization's procedures for monitoring the use of grant funds in the United States.

Part II Grants and Other Assistance to Governments and Organizations in the United States. Complete if the organization answered "Yes" to Form 990, Part IV, line 21, for any recipient that received more than \$5,000. Check this box if no one recipient received more than \$5,000. ☐

Part II can be duplicated if additional space is needed

1	(a) Name and address of organization or government	(b) EIN	(c) IRC section if applicable	(d) Amount of cash grant	(e) Amount of non-cash assistance	(f) Method of valuation (book, FMV, appraisal, other)	(g) Description of non-cash assistance	(h) Purpose of grant or assistance
(1)	COLORADO SPRINGS CAMP 7226 PO BOX 7764 COLORADO SPRINGS, CO 80933	23-7145702	501(C)(3)	13,877.				FUND MEMBERSHIP ACTI
(2)	GOSPEL SHELTERS FOR WOMEN 2934 EAST FOUNTAIN BLVD	61-1427158	501(C)(3)	7,500.				HELP FOR HURTING AND
(3)								
(4)								
(5)								
(6)								
(7)								
(8)								
(9)								
(10)								
(11)								
(12)								

2 Enter total number of section 501(c)(3) and government organizations listed in the line 1 table

3 Enter total number of other organizations listed in the line 1 table

For Paperwork Reduction Act Notice, see the Instructions for Form 990.

Schedule I (Form 990) (2011)

Part III Grants and Other Assistance to Individuals in the United States. Complete if the organization answered "Yes" on Form 990, Part IV, line 22.
Part III can be duplicated if additional space is needed.

(a) Type of grant or assistance	(b) Number of recipients	(c) Amount of cash grant	(d) Amount of non-cash assistance	(e) Method of valuation (book, FMV, appraisal, other)	(f) Description of non-cash assistance
1					
2					
3					
4					
5					
6					
7					

Part IV Supplemental Information. Complete this part to provide the information required in Part I, line 2, and any other additional information.

SCHEDULE O
(Form 990 or 990-EZ)

Department of the Treasury
Internal Revenue Service

Supplemental Information to Form 990 or 990-EZ

Complete to provide information for responses to specific questions on
Form 990 or 990-EZ or to provide any additional information.
▶ Attach to Form 990 or 990-EZ.

OMB No. 1545-0047

2011

Open to Public
Inspection

Name of the organization **MODERN WOODMEN OF AMERICA BUILDING ASSOCIATION**
COLORADO SPRINGS CAMP 7226

Employer identification number
84-0269370

990 REVIEW BY BOARD

PART VI, SECTION B, LINE 11

BOARD MEMBERS ARE LOCAL AND MEET FREQUENTLY. FOR THIS SMALL ORGANIZATION
IT IS EASY FOR THE BOARD MEMBERS TO REVIEW THE 990 BEFORE FILING THROUGH
EMAIL OR A MANUAL PROCESS.

DISCLOSURE

PART VI, SECTION C, LINE 19

ALL DOCUMENTS OF THE ORGANIZATION ARE AVAILABLE UPON REQUEST.

ATTACHMENT 1

FORM 990, PART VIII - INVESTMENT INCOME

<u>DESCRIPTION</u>	<u>(A) TOTAL REVENUE</u>	<u>(B) RELATED OR EXEMPT REVENUE</u>	<u>(C) UNRELATED BUSINESS REV.</u>	<u>(D) EXCLUDED REVENUE</u>
TEJON & PIKES PEAK PARTNERS, LLLP	24,093.			
BANK	180.			
TOTALS	<u><u>24,273.</u></u>			

ATTACHMENT 2

FORM 990, PART X - NOTES AND LOANS RECEIVABLE

BORROWER: TEJON & PIKES PEAK PARTNERS
ORIGINAL AMOUNT: 1,000,000.
INTEREST RATE: 3.500000
DATE OF NOTE: 11/09/2007
MATURITY DATE: 03/09/2025
REPAYMENT TERMS: MONTHLY
SECURITY PROVIDED: 17 S. CASCADE AVE, COLORADO SPRINGS, CO
PURPOSE OF LOAN: CARRYING NOTE ON REAL ESTATE SOLD
RELATIONSHIP: BUSINESS

BEGINNING BALANCE DUE 785,852.

Name of the organization MODERN WOODMEN OF AMERICA BUILDING ASSOCIATION
COLORADO SPRINGS CAMP 7226Employer identification number
84-0269370ATTACHMENT 2 (CONT'D)

ENDING BALANCE DUE 761,759.

TOTAL BEGINNING NOTES AND LOANS RECEIVABLE 785,852.

TOTAL ENDING NOTES AND LOANS RECEIVABLES 761,759.

SCHEDULE R
(Form 990)Department of the Treasury
Internal Revenue Service**Related Organizations and Unrelated Partnerships**▶ Complete if the organization answered "Yes" to Form 990, Part IV, line 33, 34, 35, 36, or 37.
▶ Attach to Form 990. ▶ See separate instructions.Name of the organization MODERN WOODMEN OF AMERICA BUILDING ASSOCIATION
COLORADO SPRINGS CAMP 7226Employer identification number
84-0269370

OMB No. 1545-0047

2011Open to Public
Inspection**Part I Identification of Disregarded Entities** (Complete if the organization answered "Yes" to Form 990, Part IV, line 33.)

(1)	(a) Name, address, and EIN of disregarded entity	(b) Primary activity	(c) Legal domicile (state or foreign country)	(d) Total income	(e) End-of-year assets	(f) Direct controlling entity
(1)	-----					
(2)	-----					
(3)	-----					
(4)	-----					
(5)	-----					
(6)	-----					

Part II Identification of Related Tax-Exempt Organizations (Complete if the organization answered "Yes" to Form 990, Part IV, line 34 because it had one or more related tax-exempt organizations during the tax year.)

(a) Name, address, and EIN of related organization	(b) Primary activity	(c) Legal domicile (state or foreign country)	(d) Exempt Code section	(e) Public charity status (if section 501(c)(3))	(f) Direct controlling entity	(g) Section 512(b)(13) controlled entity?
(1) MODERN WOODMEN CAMP 7226 PO BOX 7764 23-7145702 COLORADO SPRINGS, CO 80933	SOCIAL CLUB	CO	501 (C) (3)	9	N/A	Yes No X
(2)						
(3)						
(4)						
(5)						
(6)						
(7)						

For Paperwork Reduction Act Notice, see the Instructions for Form 990.

Schedule R (Form 990) 2011

Part III Identification of Related Organizations Taxable as a Partnership (Complete if the organization answered "Yes" to Form 990, Part IV, line 34 because it had one or more related organizations treated as a partnership during the tax year.)

(a) Name, address, and EIN of related organization	(b) Primary activity	(c) Legal domicile (state or foreign country)	(d) Direct controlling entity	(e) Predominant income (related, unrelated, excluded from tax under sections 512-514)	(f) Share of total income	(g) Share of end-of-year assets	(h) Disproportionate allocations?		(i) Code V-UBI amount in box 20 of Schedule K-1 (Form 1065)	(j) General or managing partner?		(k) Percentage ownership
							Yes	No		Yes	No	
(1) _____												
(2) _____												
(3) _____												
(4) _____												
(5) _____												
(6) _____												
(7) _____												

Part IV Identification of Related Organizations Taxable as a Corporation or Trust (Complete if the organization answered "Yes" to Form 990, Part IV, line 34 because it had one or more related organizations treated as a corporation or trust during the tax year.)

(a) Name, address, and EIN of related organization	(b) Primary activity	(c) Legal domicile (state or foreign country)	(d) Direct controlling entity	(e) Type of entity (C corp, S corp, or trust)	(f) Share of total income	(g) Share of end-of-year assets	(h) Percentage ownership
(1) _____							
(2) _____							
(3) _____							
(4) _____							
(5) _____							
(6) _____							
(7) _____							

Part V Transactions With Related Organizations (Complete if the organization answered "Yes" to Form 990, Part IV, line 34, 35, 35a, or 36.)

Note. Complete line 1 if any entity is listed in Parts II, III, or IV of this schedule.

1	During the tax year, did the organization engage in any of the following transactions with one or more related organizations listed in Parts II-IV?	Yes No	
		1a	1b
a	Receipt of (i) interest (iii) annuities (iii) royalties or (iv) rent from a controlled entity		X
b	Gift, grant, or capital contribution to related organization(s)	X	
c	Gift, grant, or capital contribution from related organization(s)		X
d	Loans or loan guarantees to or for related organization(s)		X
e	Loans or loan guarantees by related organization(s)		X
f	Sale of assets to related organization(s)		X
g	Purchase of assets from related organization(s)		X
h	Exchange of assets with related organization(s)		X
i	Lease of facilities, equipment, or other assets to related organization(s)		X
j	Lease of facilities, equipment, or other assets from related organization(s)		X
k	Performance of services or membership or fundraising solicitations for related organization(s)		X
l	Performance of services or membership or fundraising solicitations by related organization(s)		X
m	Sharing of facilities, equipment, mailing lists, or other assets with related organization(s)		X
n	Sharing of paid employees with related organization(s)		X
o	Reimbursement paid to related organization(s) for expenses		X
p	Reimbursement paid by related organization(s) for expenses		X
q	Other transfer of cash or property to related organization(s)		X
r	Other transfer of cash or property from related organization(s)		X

2	If the answer to any of the above is "Yes," see the instructions for information on who must complete this line, including covered relationships and transaction thresholds.	(a) Name of other organization	(b) Transaction type (a-r)	(c) Amount involved	(d) Method of determining amount involved
(1)					
(2)					
(3)					
(4)					
(5)					
(6)					

Part VI Unrelated Organizations Taxable as a Partnership (Complete if the organization answered "Yes" on Form 990, Part IV, line 37.)

Provide the following information for each entity taxed as a partnership through which the organization conducted more than five percent of its activities (measured by total assets or gross revenue) that was not a related organization. See instructions regarding exclusion for certain investment partnerships.

(a) Name, address, and EIN of entity	(b) Primary activity	(c) Legal domicile (state or foreign country)	(d) Predominant income (related, unrelated, excluded from tax under section 512-514)	(e) Are all partners section 501(c)(3) organizations?		(f) Share of total income	(g) Share of end-of-year assets	(h) Disproportionate allocations?		(i) Code V-UBI amount in box 20 of Schedule K-1 (Form 1085)	(j) General or managing partner?		(k) Percentage ownership
				Yes	No			Yes	No		Yes	No	
(1) -----													
(2) -----													
(3) -----													
(4) -----													
(5) -----													
(6) -----													
(7) -----													
(8) -----													
(9) -----													
(10) -----													
(11) -----													
(12) -----													
(13) -----													
(14) -----													
(15) -----													
(16) -----													

Part VII **Supplemental Information**

Complete this part to provide additional information for responses to questions on Schedule R (see instructions).

RENT AND ROYALTY INCOME

taxpayer's Name MODERN WOODMEN OF AMERICA BUILDING ASSOCIATION		Identifying Number 84-0269370	
DESCRIPTION OF PROPERTY RENTAL PROPERTIES			
<input type="checkbox"/> Yes	<input type="checkbox"/> No	Did you actively participate in the operation of the activity during the tax year?	

TYPE OF PROPERTY:			
REAL RENTAL INCOME			
OTHER INCOME:			
RENT		12,000.	
TOTAL GROSS INCOME			12,000.
OTHER EXPENSES:			
SEE ATTACHMENT			
DEPRECIATION (SHOWN BELOW)		5,862.	
LESS: Beneficiary's Portion			
MORTGIZATION			
LESS: Beneficiary's Portion			
DEPLETION			
LESS: Beneficiary's Portion			
TOTAL EXPENSES			41,412.
TOTAL RENT OR ROYALTY INCOME (LOSS)			-29,412.

Less Amount to	
Rent or Royalty	_____
Depreciation	_____
Depletion	_____
Investment Interest Expense	_____
Other Expenses	_____
Net Income (Loss) to Others	_____
Net Rent or Royalty Income (Loss)	<u>-29,412.</u>
Deductible Rental Loss (If Applicable)	_____

[illegible]

SUPPLEMENT TO RENT AND ROYALTY SCHEDULE

OTHER INCOME

RENT	12,000.
	<u>12,000.</u>

OTHER DEDUCTIONS

INSURANCE	1,549.
LEGAL AND OTHER PROFESSIONAL FEES	1,095.
REPAIRS	8,551.
SUPPLIES	1,442.
TAXES	4,153.
UTILITIES	3,183.
P.O./SAFE DEPOSIT BOX RENTAL	86.
BANK SERVICE CHARGES	155.
DIRECTOR'S FEES	6,250.
TRASH SERVICE	367.
BUSINESS MEETINGS	2,524.
OFFICE EXPENSE	6,195.
	<u>35,550.</u>

RENT AND ROYALTY SUMMARY

<u>PROPERTY</u>	<u>TOTAL INCOME</u>	<u>DEPLETION/ DEPRECIATION</u>	<u>OTHER EXPENSES</u>	<u>ALLOWABLE NET INCOME</u>
RENTAL PROPERTIES	12,000.	5,862.	35,550.	-29,412.
TOTALS	<u>12,000.</u>	<u>5,862.</u>	<u>35,550.</u>	<u>-29,412.</u>

Description of Property

RENTAL PROPERTIES

DEPRECIATION

Asset description	Date placed in service	Unadjusted Cost or basis	Bus. %	179 exp. reduction in basis	Basis Reduction	Basis for depreciation	Beginning Accumulated depreciation	Ending Accumulated depreciation	Me-thod	Conv.	Life	ACRS class	MA CFS class	Current-year 179 expense	Current-year depreciation
EQUIPMENT	07/01/2003	1,370.	100.000			1,370.	1,370.	1,370.	200DB	HY			7		
HVAC	09/30/2004	5,700.	100.000			5,700.	919.	1,065.	SL	MM			39		146.
HVAC/ELECTRICAL	10/31/2004	5,265.	100.000			5,265.	838.	973.	SL	MM			39		135.
PROPERTY IMPROVEMT	06/30/2005	9,020.	100.000			9,020.	7,813.	8,618.	200DB	HY			7		805.
CARPET	02/28/2007	1,494.	100.000			1,494.	817.	1,030.	SL		7,000				213.
BUILDING RENOVATIO	06/15/2007	37,240.	100.000			37,240.	3,382.	4,337.	SL	MM			39		955.
OLD BASIS	01/01/1969	182,697.	100.000												
BUILDING RENOVATIO	01/16/2007	31,963.	100.000			31,963.	3,247.	4,067.	SL	MM			39		820.
AUDIO/VIDEO EQUIPT	03/31/2008	3,972.	100.000			3,972.	2,236.	2,732.	200DB	HY			7		496.
RESURFACE PARKING	09/10/2008	18,615.	100.000			18,615.	4,291.	5,724.	150DB	HY			15		1,433.
AUDIO/VIDEO EQUIPT	01/22/2008	5,340.	100.000			5,340.	3,005.	3,672.	200DB	HY			7		667.
CONSULTING SVCS	01/01/2010	7,500.	100.000			7,500.	185.	377.	SL	MM			39		192.
Less: Retired Assets															
Subtotals		310,176.				127,479.	28,103.	33,965.							5,862.

Listed Property

Assets		Liabilities		Equity		Total	
2013	2012	2013	2012	2013	2012	2013	2012
Current Assets		Current Liabilities		Common Stock			
Cash		Accounts Payable		Retained Earnings			
Accounts Receivable		Notes Payable					
Inventory		Long-Term Debt					
Prepaid Expenses		Other Liabilities					
Other Current Assets							
Non-Current Assets		Non-Current Liabilities					
Property, Plant, and Equipment		Deferred Tax Liabilities					
Intangible Assets							
Other Non-Current Assets							
Less: Retired Assets							
Subtotals							
TOTALS							

AMORTIZATION

Asset description	Date placed in service	Cost or basis
TOTALS		

*Assets Retired

**ASSOCIATES NEW
JSA**