



See a Social Security Number? Say Something!
Report Privacy Problems to <https://public.resource.org/privacy>
Or call the IRS Identity Theft Hotline at 1-800-908-4490



Short Form Return of Organization Exempt From Income Tax

2011

Department of the Treasury Internal Revenue Service

Sponsoring organizations of donor advised funds, organizations that operate one or more hospital facilities, and certain controlling organizations as defined in section 512(b)(13) must file Form 990 (see instructions) All other organizations with gross receipts less than \$200,000 and total assets less than \$500,000 at the end of the year may use this form The organization may have to use a copy of this return to satisfy state reporting requirements

Open to Public Inspection

A For the 2011 calendar year, or tax year beginning, 2011, and ending, 2011. B Check if applicable: Address change, Name change, Initial return, Terminated, Amended return, Application pending. C Name of organization: GODS PANTRY. D Employer identification number: 80-0401261. E Telephone number. F Group Exemption Number. G Accounting Method: Cash. H Check if the organization is not required to attach Schedule B. I Website. J Tax-exempt status: 501(c)(3). K Check if the organization is not a section 509(a)(3) supporting organization or section 527 organization. L Add lines 5b, 6c, and 7b, to line 9 to determine gross receipts. Total gross receipts: \$156,009.

Part I Revenue, Expenses, and Changes in Net Assets or Fund Balances (see the instructions for Part I). Check if the organization used Schedule O to respond to any question in this Part I.

Table with 21 rows and 3 columns: Description, Line Number, Amount. Row 1: Contributions, gifts, grants, and similar amounts received (154,107). Row 9: Total revenue (156,009). Row 17: Total expenses (25,221). Row 18: Excess or (deficit) for the year (130,788). Row 21: Net assets or fund balances at end of year (134,230).

SCANNED DEC 28 2012

Expenses

Assets

NOV 21 2012

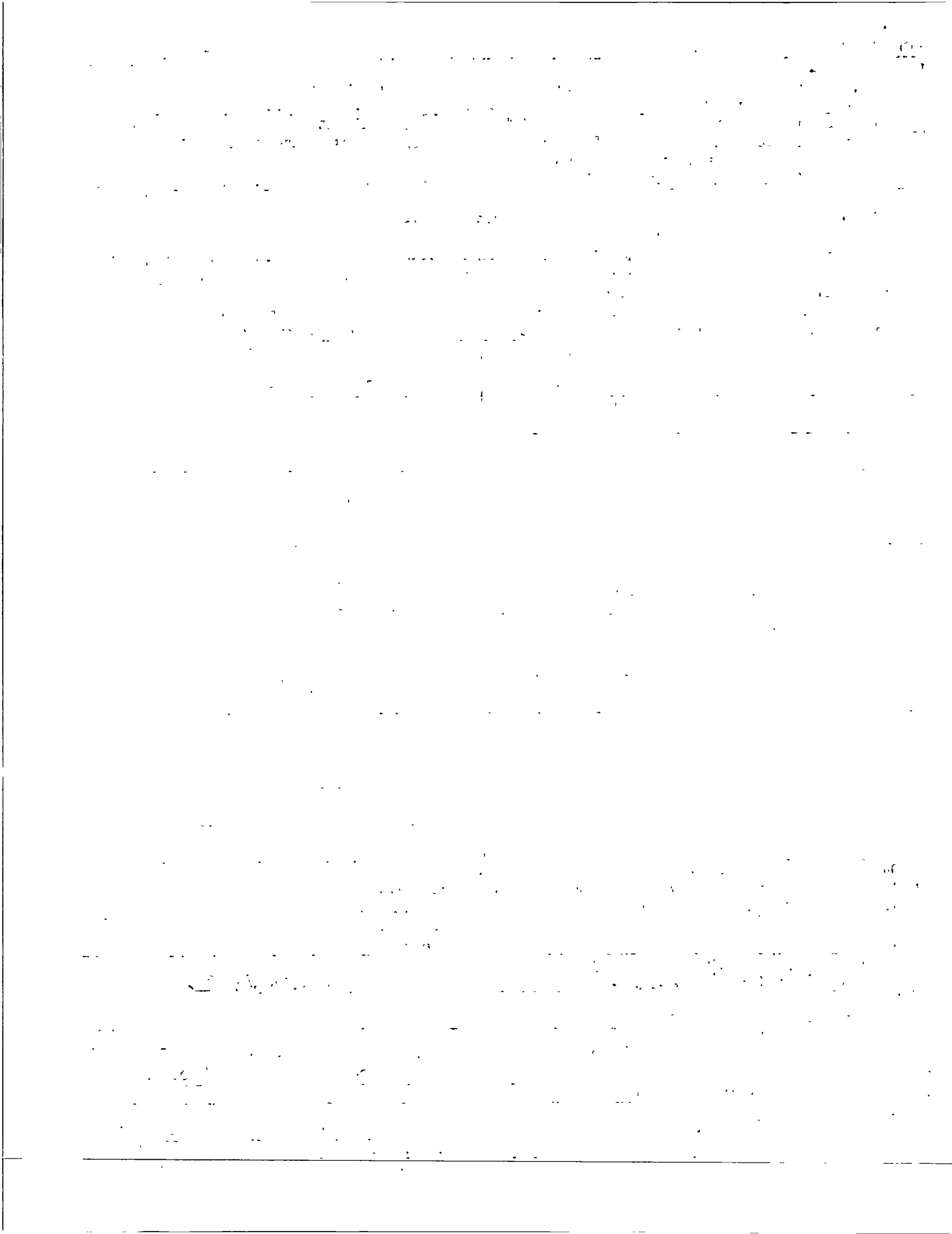
569

Part V

Other Information (Note the Schedule A and personal benefit contract statement requirements in the instructions for Part V) Check if the organization used Schedule O to respond to any question in this Part V

Input box for Schedule O

Main form body with questions 33-45b and Yes/No columns. Includes questions about significant activity, changes to documents, business income, political expenditures, loans, and tax shelter transactions.



SCHEDULE A
(Form 990 or 990-EZ)

Public Charity Status and Public Support

OMB No 1545-0047

2011

Department of the Treasury
Internal Revenue Service

Complete if the organization is a section 501(c)(3) organization or a section 4947(a)(1) nonexempt charitable trust.



▶ Attach to Form 990 or Form 990-EZ. ▶ See separate instructions.

Name of the organization

GODS PANTRY

Employer identification number

80-0401261

Part I Reason for Public Charity Status (All organizations must complete this part.) See instructions.

The organization is not a private foundation because it is: (For lines 1 through 11, check only one box.)

- 1 A church, convention of churches, or association of churches described in section 170(b)(1)(A)(i).
- 2 A school described in section 170(b)(1)(A)(ii). (Attach Schedule E.)
- 3 A hospital or a cooperative hospital service organization described in section 170(b)(1)(A)(iii).
- 4 A medical research organization operated in conjunction with a hospital described in section 170(b)(1)(A)(iii). Enter the hospital's name, city, and state _____
- 5 An organization operated for the benefit of a college or university owned or operated by a governmental unit described in section 170(b)(1)(A)(iv). (Complete Part II.)
- 6 A federal, state, or local government or governmental unit described in section 170(b)(1)(A)(v).
- 7 An organization that normally receives a substantial part of its support from a governmental unit or from the general public described in section 170(b)(1)(A)(vi). (Complete Part II.)
- 8 A community trust described in section 170(b)(1)(A)(vi). (Complete Part II.)
- 9 An organization that normally receives: (1) more than 33 1/3% of its support from contributions, membership fees, and gross receipts from activities related to its exempt functions - subject to certain exceptions, and (2) no more than 33 1/3% of its support from gross investment income and unrelated business taxable income (less section 511 tax) from businesses acquired by the organization after June 30, 1975. See section 509(a)(2). (Complete Part III.)
- 10 An organization organized and operated exclusively to test for public safety. See section 509(a)(4).
- 11 An organization organized and operated exclusively for the benefit of, to perform the functions of, or to carry out the purposes of one or more publicly supported organizations described in section 509(a)(1) or section 509(a)(2). See section 509(a)(3). Check the box that describes the type of supporting organization and complete lines 11e through 11h.
 a Type I b Type II c Type III-Functionally integrated d Type III-Other
- e By checking this box, I certify that the organization is not controlled directly or indirectly by one or more disqualified persons other than foundation managers and other than one or more publicly supported organizations described in section 509(a)(1) or section 509(a)(2).
- f If the organization received a written determination from the IRS that it is a Type I, Type II, or Type III supporting organization, check this box
- g Since August 17, 2006, has the organization accepted any gift or contribution from any of the following persons?

	Yes	No
11g(i)		
11g(ii)		
11g(iii)		

(i) Name of supported organization	(ii) EIN	(iii) Type of organization (described on lines 1-9 above or IRC section (see instructions))	(iv) Is the organization in col (i) listed in your governing document?		(v) Did you notify the organization in col (i) of your support?		(vi) Is the organization in col (i) organized in the U S ?		(vii) Amount of support
			Yes	No	Yes	No	Yes	No	
(A)									
(B)									
(C)									
(D)									
(E)									
Total									

Part III Support Schedule for Organizations Described in Sections 170(b)(1)(A)(iv) and 170(b)(1)(A)(vi)

(Complete only if you checked the box on line 5, 7, or 8 of Part I or if the organization failed to qualify under Part III. If the organization fails to qualify under the tests listed below, please complete Part III.)

Section A. Public Support

Calendar year (or fiscal year beginning in) ▶	(a) 2007	(b) 2008	(c) 2009	(d) 2010	(e) 2011	(f) Total
1 Gifts, grants, contributions, and membership fees received. (Do not include any "unusual grants")						
2 Tax revenues levied for the organization's benefit and either paid to or expended on its behalf						
3 The value of services or facilities furnished by a governmental unit to the organization without charge						
4 Total. Add lines 1 through 3						
5 The portion of total contributions by each person (other than a governmental unit or publicly supported organization) included on line 1 that exceeds 2% of the amount shown on line 11, column (f)						
6 Public support. Subtract line 5 from line 4						

Section B. Total Support

Calendar year (or fiscal year beginning in) ▶	(a) 2007	(b) 2008	(c) 2009	(d) 2010	(e) 2011	(f) Total
7 Amounts from line 4						
8 Gross income from interest, dividends, payments received on securities loans, rents, royalties and income from similar sources						
9 Net income from unrelated business activities, whether or not the business is regularly carried on						
10 Other income. Do not include gain or loss from the sale of capital assets (Explain in Part IV.)						
11 Total support. Add lines 7 through 10						
12 Gross receipts from related activities, etc. (see instructions)					12	

13 First five years. If the Form 990 is for the organization's first, second, third, fourth, or fifth tax year as a section 501(c)(3) organization, check this box and stop here

Section C. Computation of Public Support Percentage

14 Public support percentage for 2011 (line 6, column (f) divided by line 11, column (f))	14	%
15 Public support percentage from 2010 Schedule A, Part II, line 14	15	%
16a 33 1/3% support test - 2011. If the organization did not check the box on line 13, and line 14 is 33 1/3% or more, check this box and stop here. The organization qualifies as a publicly supported organization	<input type="checkbox"/>	
b 33 1/3% support test - 2010. If the organization did not check a box on line 13 or 16a, and line 15 is 33 1/3% or more, check this box and stop here. The organization qualifies as a publicly supported organization	<input type="checkbox"/>	
17a 10%-facts-and-circumstances test - 2011. If the organization did not check a box on line 13, 16a, or 16b, and line 14 is 10% or more, and if the organization meets the "facts-and-circumstances" test, check this box and stop here. Explain in Part IV how the organization meets the "facts-and-circumstances" test. The organization qualifies as a publicly supported organization	<input type="checkbox"/>	
b 10%-facts-and-circumstances test - 2010. If the organization did not check a box on line 13, 16a, 16b, or 17a, and line 15 is 10% or more, and if the organization meets the "facts-and-circumstances" test, check this box and stop here. Explain in Part IV how the organization meets the "facts-and-circumstances" test. The organization qualifies as a publicly supported organization	<input type="checkbox"/>	
18 Private foundation. If the organization did not check a box on line 13, 16a, 16b, 17a, or 17b, check this box and see instructions	<input type="checkbox"/>	

Part III Support Schedule for Organizations Described in Section 509(a)(2)

(Complete only if you checked the box on line 9 of Part I or if the organization failed to qualify under Part II.)

If the organization fails to qualify under the tests listed below, please complete Part II.)

Section A. Public Support

Calendar year (or fiscal year beginning in) ▶	(a) 2007	(b) 2008	(c) 2009	(d) 2010	(e) 2011	(f) Total
1 Gifts, grants, contributions, and membership fees received (Do not include any "unusual grants")			13,464	18,625	154,117	186,206
2 Gross receipts from admissions, merchandise sold or services performed, or facilities furnished in any activity that is related to the organization's tax-exempt purpose						
3 Gross receipts from activities that are not an unrelated trade or bus. under sec 513						
4 Tax revenues levied for the organization's benefit and either paid to or expended on its behalf						
5 The value of services or facilities furnished by a governmental unit to the organization without charge						
6 Total. Add lines 1 through 5			13,464	18,625	154,117	186,206
7a Amounts included on lines 1, 2, and 3 received from disqualified persons						
b Amounts included on lines 2 and 3 received from other than disqualified persons that exceed the greater of \$5,000 or 1% of the amount on line 13 for the year						
c Add lines 7a and 7b						
8 Public support (Subtract line 7c from line 6)						186,206

Section B. Total Support

Calendar year (or fiscal year beginning in) ▶	(a) 2007	(b) 2008	(c) 2009	(d) 2010	(e) 2011	(f) Total
9 Amounts from line 6			13,464	18,625	154,117	186,206
10a Gross income from interest, dividends, payments received on securities loans, rents, royalties and income from similar sources						
b Unrelated business taxable income (less section 511 taxes) from businesses acquired after June 30, 1975						
c Add lines 10a and 10b						
11 Net income from unrelated business activities not included in line 10b, whether or not the business is regularly carried on						
12 Other income. Do not include gain or loss from the sale of capital assets (Explain in Part IV.)						
13 Total support. (Add lines 9, 10c, 11, and 12.)	0		13,464	18,625	154,117	186,206

14 First five years. If the Form 990 is for the organization's first, second, third, fourth, or fifth tax year as a section 501(c)(3) organization, check this box and stop here

Section C. Computation of Public Support Percentage

15 Public support percentage for 2011 (line 8, column (f) divided by line 13, column (f))	15	%
16 Public support percentage from 2010 Schedule A, Part III, line 15	16	%

Section D. Computation of Investment Income Percentage

17 Investment income percentage for 2011 (line 10c, column (f) divided by line 13, column (f))	17	%
18 Investment income percentage from 2010 Schedule A, Part III, line 17	18	%

19a 33 1/3% support tests - 2011. If the organization did not check the box on line 14, and line 15 is more than 33 1/3%, and line 17 is not more than 33 1/3%, check this box and stop here. The organization qualifies as a publicly supported organization

b 33 1/3% support tests - 2010. If the organization did not check a box on line 14 or line 19a, and line 16 is more than 33 1/3%, and line 18 is not more than 33 1/3%, check this box and stop here. The organization qualifies as a publicly supported organization

20 Private foundation. If the organization did not check a box on line 14, 19a, or 19b, check this box and see instructions

SCHEDULE O
(Form 990 or 990-EZ)

Supplemental Information to Form 990 or 990-EZ

OMB No. 1545-0047

2011

Department of the Treasury
Internal Revenue Service

Complete to provide information for responses to specific questions on
Form 990 or 990-EZ or to provide any additional information.

▶ Attach to Form 990 or 990-EZ.

Open to Public
Inspection

Name of the organization

Employer identification number

GODS PANTRY

80-0401261

01. Description of other expenses (Part I, line 16)

DESCRIPTION	AMOUNT
FOOD PURCHASES	12,655
HEALTH AND HYGIENE SUPPLIES	2,282
SUPPLIES	713
TELECOMMUNICATIONS	443
DEPRECIATION	335

02. Other changes in net assets or fund balances (Part I, line 20)

DESCRIPTION	AMOUNT
INCOME NOT REPORTED ON PRIOR RETURN	253

03. Description of other assets (Part II, line 24)

CATEGORY	BEGINNING	
	OF YEAR	END OF YEAR
FURNITURE AND EQUIPMENT	0	202

Depreciation and Amortization

(Including Information on Listed Property)

Department of the Treasury
Internal Revenue Service (99)

▶ See separate instructions. ▶ Attach to your tax return.

2011
Attachment
Sequence No. **179**

Name(s) shown on return

Business or activity to which this form relates

Identifying number

GODS PANTRY

FORM 990 - 1

80-0401261

Part I Election To Expense Certain Property Under Section 179

Note: If you have any listed property, complete Part V before you complete Part I

1	Maximum amount (see instructions)	1	
2	Total cost of section 179 property placed in service (see instructions)	2	
3	Threshold cost of section 179 property before reduction in limitation (see instructions)	3	
4	Reduction in limitation. Subtract line 3 from line 2. If zero or less, enter -0-	4	
5	Dollar limitation for tax year. Subtract line 4 from line 1. If zero or less, enter -0-. If married filing separately, see instructions	5	
6	(a) Description of property	(b) Cost (business use only)	(c) Elected cost
7	Listed property. Enter the amount from line 29	7	
8	Total elected cost of section 179 property. Add amounts in column (c), lines 6 and 7	8	
9	Tentative deduction. Enter the smaller of line 5 or line 8	9	
10	Carryover of disallowed deduction from line 13 of your 2010 Form 4562	10	
11	Business income limitation. Enter the smaller of business income (not less than zero) or line 5 (see instructions)	11	
12	Section 179 expense deduction. Add lines 9 and 10, but do not enter more than line 11	12	
13	Carryover of disallowed deduction to 2012. Add lines 9 and 10, less line 12	▶ 13	

Note: Do not use Part II or Part III below for listed property. Instead, use Part V.

Part II Special Depreciation Allowance and Other Depreciation (Do not include listed property.) (See instructions)

14	Special depreciation allowance for qualified property (other than listed property) placed in service during the tax year (see instructions)	14	
15	Property subject to section 168(f)(1) election	15	
16	Other depreciation (including ACRS)	16	

Part III MACRS Depreciation (Do not include listed property.) (See instructions)

Section A

17	MACRS deductions for assets placed in service in tax years beginning before 2011	17	
18	If you are electing to group any assets placed in service during the tax year into one or more general asset accounts, check here	▶ <input type="checkbox"/>	

Section B - Assets Placed in Service During 2011 Tax Year Using the General Depreciation System

(a) Classification of property	(b) Month and year placed in service	(c) Basis for depreciation (business/investment use only-see instructions)	(d) Recovery period	(e) Convention	(f) Method	(g) Depreciation deduction
19a 3-year property						
b 5-year property						
c 7-year property		218	7	HY	S/L	16
d 10-year property						
e 15-year property						
f 20-year property						
g 25-year property			25 yrs		S/L	
h Residential rental property			27.5 yrs.	MM	S/L	
i Nonresidential real property	2011-11	99,515	27 5 yrs.	MM	S/L	319
			39 yrs.	MM	S/L	

Section C - Assets Placed in Service During 2011 Tax Year Using the Alternative Depreciation System

20a	Class life				S/L	
b	12-year		12 yrs		S/L	
c	40-year		40 yrs.	MM	S/L	

Part IV Summary (See instructions.)

21	Listed property. Enter amount from line 28	21	
22	Total. Add amounts from line 12, lines 14 through 17, lines 19 and 20 in column (g), and line 21. Enter here and on the appropriate lines of your return. Partnerships and S corporations - see instructions	22	335
23	For assets shown above and placed in service during the current year, enter the portion of the basis attributable to section 263A costs	▶ 23	

* Item was disposed of during current year.

Depreciation Detail Listing

Program Services
For your records only

2011
PAGE 1

NETWORTH AS SHOWN ON RETURN

SOCIAL SECURITY NUMBER/EIN

GODS PANTRY

80-0401261

No	Description	Date	Cost	Salvage	Business percentage	Section 179	Depreciation Basis	Life	Method	Rate	Current depr	Accumulated Depreciation	Prior expense	Bonus depreciation	AMT Current
1	BUILDING - 17938 DENR0111122		99,515		100.00		99,515	39	S/L MM	.321	319	319			319
Totals															
Land Amount															
Net Depreciable Cost															
												99,515	319	319	319

ST ADJ:

Next Year's Depreciation

2011

Name							FEIN
GODS PANTRY							80-0401261
Form	Multi-Form	Description	Date	Basis	Method	Life	Deduction
PRG	1	BUILDING - 17938 DENNIS	20111122	99,515	ARP	39	2,552
MGT	1	OFFICE EQUIPMENT	20110630	218	SL	7	31
		TOTAL					2,583