



See a Social Security Number? Say Something!
Report Privacy Problems to <https://public.resource.org/privacy>
Or call the IRS Identity Theft Hotline at 1-800-908-4490



Return of Private Foundation
 or Section 4947(a)(1) Nonexempt Charitable Trust
 Treated as a Private Foundation

2011

Note. The foundation may be able to use a copy of this return to satisfy state reporting requirements.

For calendar year 2011 or tax year beginning , 2011, and ending , 20

Name of foundation
KIBBLE FOUNDATION 1055225707

Number and street (or P O box number if mail is not delivered to street address) Room/suite
PO BOX 1558 DEPT EA4E86

City or town, state, and ZIP code
COLUMBUS, OH 43216

A Employer identification number
31-6175971

B Telephone number (see instructions)
(614) 480-4962

C If exemption application is pending, check here

D 1 Foreign organizations, check here
 2 Foreign organizations meeting the 85% test, check here and attach computation

E If private foundation status was terminated under section 507(b)(1)(A), check here

F If the foundation is in a 60-month termination under section 507(b)(1)(B), check here

G Check all that apply:
 Initial return Initial return of a former public charity
 Final return Amended return
 Address change Name change

H Check type of organization: Section 501(c)(3) exempt private foundation
 Section 4947(a)(1) nonexempt charitable trust Other taxable private foundation

I Fair market value of all assets at end of year (from Part II, col. (c), line 16) ▶ \$ **3,226,510.**

J Accounting method: Cash Accrual
 Other (specify) _____
 (Part I, column (d) must be on cash basis.)

ENVELOPE POSTMARK DATE MAY 14 2012

E1-331 MAY 9 11 AM '11 OGDEN, UT

Part I Analysis of Revenue and Expenses (The total of amounts in columns (b), (c), and (d) may not necessarily equal the amounts in column (a) (see instructions).)		(a) Revenue and expenses per books	(b) Net investment income	(c) Adjusted net income	(d) Disbursements for charitable purposes (cash basis only)
1	Contributions, gifts, grants, etc., received (attach schedule)				
2	Check <input type="checkbox"/> if the foundation is not required to attach Sch B				
3	Interest on savings and temporary cash investments				
4	Dividends and interest from securities	74,936.	74,936.		STMT 1
5a	Gross rents				
b	Net rental income or (loss)				
6a	Net gain or (loss) from sale of assets not on line 10	218,528.			
b	Gross sales price for all assets on line 6a	993,628.			
	Capital gain net income (from Part IV, line 2)		218,528.		
8	Net short-term capital gain				
9	Income modifications				
10a	Gross sales less returns and allowances				
b	Less Cost of goods sold				
c	Gross profit or (loss) (attach schedule)				
11	Other income (attach schedule)	372.	372.		STMT 4
12	Total. Add lines 1 through 11	293,836.	293,836.		
13	Compensation of officers, directors, trustees, etc	28,344.	14,172.		14,172.
14	Other employee salaries and wages		NONE	NONE	
15	Pension plans, employee benefits		NONE	NONE	
16a	Legal fees (attach schedule)				
b	Accounting fees (attach schedule)				
c	Other professional fees (attach schedule)				
17	Interest				
18	Taxes (attach schedule) (see instructions) STMT 5	866.	666.		200.
19	Depreciation (attach schedule) and depletion				
20	Occupancy				
21	Travel, conferences, and meetings		NONE	NONE	
22	Printing and publications		NONE	NONE	
23	Other expenses (attach schedule)				
24	Total operating and administrative expenses. Add lines 13 through 23	29,210.	14,838.	NONE	14,372.
25	Contributions, gifts, grants paid	160,417.			160,417.
26	Total expenses and disbursements. Add lines 24 and 25	189,627.	14,838.	NONE	174,789.
27	Subtract line 26 from line 12.				
a	Excess of revenue over expenses and disbursements	104,209.			
b	Net investment income (if negative, enter -0-)		278,998.		
c	Adjusted net income (if negative, enter -0-)				

Part II Balance Sheets		Attached schedules and amounts in the description column should be for end-of-year amounts only (See instructions)			
		Beginning of year	End of year		
		(a) Book Value	(b) Book Value	(c) Fair Market Value	
Assets	1	Cash - non-interest-bearing			
	2	Savings and temporary cash investments			
	3	Accounts receivable ▶ Less allowance for doubtful accounts ▶			
	4	Pledges receivable ▶ Less allowance for doubtful accounts ▶			
	5	Grants receivable			
	6	Receivables due from officers, directors, trustees, and other disqualified persons (attach schedule) (see instructions)			
	7	Other notes and loans receivable (attach schedule) ▶ Less allowance for doubtful accounts ▶			
	8	Inventories for sale or use			
	9	Prepaid expenses and deferred charges			
	10 a	Investments - U S and state government obligations (attach schedule)			
	b	Investments - corporate stock (attach schedule)			
	c	Investments - corporate bonds (attach schedule)			
	11	Investments - land, buildings, and equipment basis Less accumulated depreciation (attach schedule) ▶			
	12	Investments - mortgage loans			
	13	Investments - other (attach schedule)	2,832,761.	2,935,445.	3,226,510.
	14	Land, buildings, and equipment basis Less accumulated depreciation (attach schedule) ▶			
15	Other assets (describe ▶)				
16	Total assets (to be completed by all filers - see the instructions Also, see page 1, item I)	2,832,761.	2,935,445.	3,226,510.	
Liabilities	17	Accounts payable and accrued expenses			
	18	Grants payable			
	19	Deferred revenue			
	20	Loans from officers, directors, trustees, and other disqualified persons			
	21	Mortgages and other notes payable (attach schedule)			
	22	Other liabilities (describe ▶)			
23	Total liabilities (add lines 17 through 22)				
Net Assets or Fund Balances	Foundations that follow SFAS 117, check here ▶ <input type="checkbox"/> and complete lines 24 through 26 and lines 30 and 31.				
	24	Unrestricted			
	25	Temporarily restricted			
	26	Permanently restricted			
	Foundations that do not follow SFAS 117, check here and complete lines 27 through 31. ▶ <input checked="" type="checkbox"/>				
	27	Capital stock, trust principal, or current funds	2,832,761.	2,935,445.	
	28	Paid-in or capital surplus, or land, bldg, and equipment fund			
	29	Retained earnings, accumulated income, endowment, or other funds			
30	Total net assets or fund balances (see instructions)	2,832,761.	2,935,445.		
31	Total liabilities and net assets/fund balances (see instructions)	2,832,761.	2,935,445.		

Part III Analysis of Changes in Net Assets or Fund Balances		
1	Total net assets or fund balances at beginning of year - Part II, column (a), line 30 (must agree with end-of-year figure reported on prior year's return)	1 2,832,761.
2	Enter amount from Part I, line 27a	2 104,209.
3	Other increases not included in line 2 (itemize) ▶	3
4	Add lines 1, 2, and 3	4 2,936,970.
5	Decreases not included in line 2 (itemize) ▶ SEE STATEMENT 7	5 1,525.
6	Total net assets or fund balances at end of year (line 4 minus line 5) - Part II, column (b), line 30	6 2,935,445.

Part IV Capital Gains and Losses for Tax on Investment Income

(a) List and describe the kind(s) of property sold (e.g., real estate, 2-story brick warehouse, or common stock, 200 shs. MLC Co)				(b) How acquired P-Purchase D-Donation	(c) Date acquired (mo., day, yr.)	(d) Date sold (mo., day, yr.)
1a PUBLICLY TRADED SECURITIES						
b						
c						
d						
e						
(e) Gross sales price	(f) Depreciation allowed (or allowable)	(g) Cost or other basis plus expense of sale	(h) Gain or (loss) (e) plus (f) minus (g)			
a 998,521.		775,100.	223,421.			
b						
c						
d						
e						
Complete only for assets showing gain in column (h) and owned by the foundation on 12/31/69						
(i) FMV as of 12/31/69	(j) Adjusted basis as of 12/31/69	(k) Excess of col. (i) over col. (j), if any	(l) Gains (Col. (h) gain minus col. (k), but not less than -0- or Losses (from col. (h)))			
a			223,421.			
b						
c						
d						
e						
2 Capital gain net income or (net capital loss) { If gain, also enter in Part I, line 7 If (loss), enter -0- in Part I, line 7 }				2		218,528.
3 Net short-term capital gain or (loss) as defined in sections 1222(5) and (6): If gain, also enter in Part I, line 8, column (c) (see instructions). If (loss), enter -0- in Part I, line 8				3		

Part V Qualification Under Section 4940(e) for Reduced Tax on Net Investment Income

(For optional use by domestic private foundations subject to the section 4940(a) tax on net investment income.)

If section 4940(d)(2) applies, leave this part blank.

Was the foundation liable for the section 4942 tax on the distributable amount of any year in the base period? Yes No
 If "Yes," the foundation does not qualify under section 4940(e). Do not complete this part.

1 Enter the appropriate amount in each column for each year; see the instructions before making any entries.			
(a) Base period years Calendar year (or tax year beginning in)	(b) Adjusted qualifying distributions	(c) Net value of noncharitable-use assets	(d) Distribution ratio (col. (b) divided by col. (c))
2010	194,884.	3,241,003.	0.06013076816
2009	120,013.	2,992,820.	0.04010030673
2008	155,358.	3,347,317.	0.04641269411
2007	66,700.	3,671,269.	0.01816810482
2006	130,600.	3,122,358.	0.04182736253
2 Total of line 1, column (d)			0.20663923635
3 Average distribution ratio for the 5-year base period - divide the total on line 2 by 5, or by the number of years the foundation has been in existence if less than 5 years			0.04132784727
4 Enter the net value of noncharitable-use assets for 2011 from Part X, line 5			3,296,387.
5 Multiply line 4 by line 3			136,233.
6 Enter 1% of net investment income (1% of Part I, line 27b)			2,790.
7 Add lines 5 and 6			139,023.
8 Enter qualifying distributions from Part XII, line 4 If line 8 is equal to or greater than line 7, check the box in Part VI, line 1b, and complete that part using a 1% tax rate. See the Part VI instructions.			174,789.

Part VI Excise Tax Based on Investment Income (Section 4940(a), 4940(b), 4940(e), or 4948 - see instructions)

Table with 11 rows for excise tax calculations. Includes sub-rows 6a-6d for credits and payments. Total tax due is 1,914.

Part VII-A Statements Regarding Activities

Table with 10 rows for activity statements. Includes questions about political influence, unrelated business income, and substantial contributors. Includes handwritten 'OH' in row 8a.

Part VII-A Statements Regarding Activities (continued)

11 At any time during the year, did the foundation, directly or indirectly, own a controlled entity within the meaning of section 512(b)(13)? If "Yes," attach schedule (see instructions)
12 Did the foundation make a distribution to a donor advised fund over which the foundation or a disqualified person had advisory privileges? If "Yes," attach statement (see instructions)
13 Did the foundation comply with the public inspection requirements for its annual returns and exemption application?
Website address N/A
14 The books are in care of HUNTINGTON NATIONAL BANK Telephone no (614) 480-4962
Located at PO BOX 1558 DEPT EA4E86, COLUMBUS, OH ZIP + 4 43216
15 Section 4947(a)(1) nonexempt charitable trusts filing Form 990-PF in lieu of Form 1041 - Check here
and enter the amount of tax-exempt interest received or accrued during the year 15
16 At any time during calendar year 2011, did the foundation have an interest in or a signature or other authority over a bank, securities, or other financial account in a foreign country? Yes No X

Part VII-B Statements Regarding Activities for Which Form 4720 May Be Required

File Form 4720 if any item is checked in the "Yes" column, unless an exception applies.

1a During the year did the foundation (either directly or indirectly)
(1) Engage in the sale or exchange, or leasing of property with a disqualified person? Yes No X
(2) Borrow money from, lend money to, or otherwise extend credit to (or accept it from) a disqualified person? Yes No X
(3) Furnish goods, services, or facilities to (or accept them from) a disqualified person? Yes No X
(4) Pay compensation to, or pay or reimburse the expenses of, a disqualified person? X Yes No
(5) Transfer any income or assets to a disqualified person (or make any of either available for the benefit or use of a disqualified person)? Yes No X
(6) Agree to pay money or property to a government official? (Exception. Check "No" if the foundation agreed to make a grant to or to employ the official for a period after termination of government service, if terminating within 90 days). Yes No X
b If any answer is "Yes" to 1a(1)-(6), did any of the acts fail to qualify under the exceptions described in Regulations section 53.4941(d)-3 or in a current notice regarding disaster assistance (see instructions)? 1b X
Organizations relying on a current notice regarding disaster assistance check here
c Did the foundation engage in a prior year in any of the acts described in 1a, other than excepted acts, that were not corrected before the first day of the tax year beginning in 2011? 1c X
2 Taxes on failure to distribute income (section 4942) (does not apply for years the foundation was a private operating foundation defined in section 4942(j)(3) or 4942(j)(5)):
a At the end of tax year 2011, did the foundation have any undistributed income (lines 6d and 6e, Part XIII) for tax year(s) beginning before 2011? Yes No X
If "Yes," list the years
b Are there any years listed in 2a for which the foundation is not applying the provisions of section 4942(a)(2) (relating to incorrect valuation of assets) to the year's undistributed income? (If applying section 4942(a)(2) to all years listed, answer "No" and attach statement - see instructions.) 2b X
c If the provisions of section 4942(a)(2) are being applied to any of the years listed in 2a, list the years here.
3a Did the foundation hold more than a 2% direct or indirect interest in any business enterprise at any time during the year? Yes No X
b If "Yes," did it have excess business holdings in 2011 as a result of (1) any purchase by the foundation or disqualified persons after May 26, 1969; (2) the lapse of the 5-year period (or longer period approved by the Commissioner under section 4943(c)(7)) to dispose of holdings acquired by gift or bequest; or (3) the lapse of the 10-, 15-, or 20-year first phase holding period? (Use Schedule C, Form 4720, to determine if the foundation had excess business holdings in 2011.) 3b
4a Did the foundation invest during the year any amount in a manner that would jeopardize its charitable purposes? 4a X
b Did the foundation make any investment in a prior year (but after December 31, 1969) that could jeopardize its charitable purpose that had not been removed from jeopardy before the first day of the tax year beginning in 2011? 4b X

Part VII-B Statements Regarding Activities for Which Form 4720 May Be Required (continued)

5a During the year did the foundation pay or incur any amount to:

(1) Carry on propaganda, or otherwise attempt to influence legislation (section 4945(e))? Yes No

(2) Influence the outcome of any specific public election (see section 4955); or to carry on, directly or indirectly, any voter registration drive? Yes No

(3) Provide a grant to an individual for travel, study, or other similar purposes? Yes No

(4) Provide a grant to an organization other than a charitable, etc., organization described in section 509(a)(1), (2), or (3), or section 4940(d)(2)? (see instructions) Yes No

(5) Provide for any purpose other than religious, charitable, scientific, literary, or educational purposes, or for the prevention of cruelty to children or animals? Yes No

b If any answer is "Yes" to 5a(1)-(5), did any of the transactions fail to qualify under the exceptions described in Regulations section 53.4945 or in a current notice regarding disaster assistance (see instructions)? Yes No
 Organizations relying on a current notice regarding disaster assistance check here

c If the answer is "Yes" to question 5a(4), does the foundation claim exemption from the tax because it maintained expenditure responsibility for the grant? Yes No
 If "Yes," attach the statement required by Regulations section 53.4945-5(d)

6a Did the foundation, during the year, receive any funds, directly or indirectly, to pay premiums on a personal benefit contract? Yes No

b Did the foundation, during the year, pay premiums, directly or indirectly, on a personal benefit contract? Yes No
 If "Yes" to 6b, file Form 8870

7a At any time during the tax year, was the foundation a party to a prohibited tax shelter transaction? Yes No

b If "Yes," did the foundation receive any proceeds or have any net income attributable to the transaction? Yes No

Part VIII Information About Officers, Directors, Trustees, Foundation Managers, Highly Paid Employees, and Contractors

1 List all officers, directors, trustees, foundation managers and their compensation (see instructions).

(a) Name and address	(b) Title, and average hours per week devoted to position	(c) Compensation (if not paid, enter -0-)	(d) Contributions to employee benefit plans and deferred compensation	(e) Expense account, other allowances
SEE STATEMENT 8		28,344	-0-	-0-

2 Compensation of five highest-paid employees (other than those included on line 1 - see instructions). If none, enter "NONE."

(a) Name and address of each employee paid more than \$50,000	(b) Title, and average hours per week devoted to position	(c) Compensation	(d) Contributions to employee benefit plans and deferred compensation	(e) Expense account, other allowances
NONE		NONE	NONE	NONE

Total number of other employees paid over \$50,000 NONE

Part VIII Information About Officers, Directors, Trustees, Foundation Managers, Highly Paid Employees, and Contractors (continued)

3 Five highest-paid independent contractors for professional services (see instructions). If none, enter "NONE."		
(a) Name and address of each person paid more than \$50,000	(b) Type of service	(c) Compensation
NONE		NONE
Total number of others receiving over \$50,000 for professional services		NONE

Part IX-A Summary of Direct Charitable Activities

List the foundation's four largest direct charitable activities during the tax year. Include relevant statistical information such as the number of organizations and other beneficiaries served, conferences convened, research papers produced, etc	Expenses
1 NONE	
2	
3	
4	

Part IX-B Summary of Program-Related Investments (see instructions)

Describe the two largest program-related investments made by the foundation during the tax year on lines 1 and 2	Amount
1 NONE	
2	
All other program-related investments See instructions	
3 NONE	
Total. Add lines 1 through 3	

Part X Minimum Investment Return (All domestic foundations must complete this part. Foreign foundations, see instructions.)

1	Fair market value of assets not used (or held for use) directly in carrying out charitable, etc., purposes:		
a	Average monthly fair market value of securities	1a	3,330,005.
b	Average of monthly cash balances	1b	16,581.
c	Fair market value of all other assets (see instructions)	1c	NONE
d	Total (add lines 1a, b, and c)	1d	3,346,586.
e	Reduction claimed for blockage or other factors reported on lines 1a and 1c (attach detailed explanation)	1e	
2	Acquisition indebtedness applicable to line 1 assets	2	NONE
3	Subtract line 2 from line 1d	3	3,346,586.
4	Cash deemed held for charitable activities. Enter 1 1/2% of line 3 (for greater amount, see instructions)	4	50,199.
5	Net value of noncharitable-use assets. Subtract line 4 from line 3. Enter here and on Part V, line 4	5	3,296,387.
6	Minimum investment return. Enter 5% of line 5	6	164,819.

Part XI Distributable Amount (see instructions) (Section 4942(j)(3) and (j)(5) private operating foundations and certain foreign organizations check here and do not complete this part.)

1	Minimum investment return from Part X, line 6	1	164,819.
2a	Tax on investment income for 2011 from Part VI, line 5	2a	2,790.
b	Income tax for 2011. (This does not include the tax from Part VI.)	2b	
c	Add lines 2a and 2b	2c	2,790.
3	Distributable amount before adjustments. Subtract line 2c from line 1	3	162,029.
4	Recoveries of amounts treated as qualifying distributions	4	NONE
5	Add lines 3 and 4	5	162,029.
6	Deduction from distributable amount (see instructions)	6	NONE
7	Distributable amount as adjusted. Subtract line 6 from line 5. Enter here and on Part XIII, line 1	7	162,029.

Part XII Qualifying Distributions (see instructions)

1	Amounts paid (including administrative expenses) to accomplish charitable, etc., purposes:		
a	Expenses, contributions, gifts, etc. - total from Part I, column (d), line 26	1a	174,789.
b	Program-related investments - total from Part IX-B	1b	
2	Amounts paid to acquire assets used (or held for use) directly in carrying out charitable, etc., purposes	2	NONE
3	Amounts set aside for specific charitable projects that satisfy the:		
a	Suitability test (prior IRS approval required)	3a	NONE
b	Cash distribution test (attach the required schedule)	3b	NONE
4	Qualifying distributions. Add lines 1a through 3b. Enter here and on Part V, line 8, and Part XIII, line 4	4	174,789.
5	Foundations that qualify under section 4940(e) for the reduced rate of tax on net investment income. Enter 1% of Part I, line 27b (see instructions)	5	2,790.
6	Adjusted qualifying distributions. Subtract line 5 from line 4	6	171,999.

Note. The amount on line 6 will be used in Part V, column (b), in subsequent years when calculating whether the foundation qualifies for the section 4940(e) reduction of tax in those years.

Part XIII Undistributed Income (see instructions)

	(a) Corpus	(b) Years prior to 2010	(c) 2010	(d) 2011
1 Distributable amount for 2011 from Part XI, line 7				162,029.
2 Undistributed income, if any, as of the end of 2011				
a Enter amount for 2010 only			109,839.	
b Total for prior years. 20 <u>09</u> , 20 <u> </u> , 20 <u> </u>		NONE		
3 Excess distributions carryover, if any, to 2011:				
a From 2006	NONE			
b From 2007	NONE			
c From 2008	NONE			
d From 2009	NONE			
e From 2010	NONE			
f Total of lines 3a through e	NONE			
4 Qualifying distributions for 2011 from Part XII, line 4. ► \$ <u>174,789.</u>				
a Applied to 2010, but not more than line 2a			109,839.	
b Applied to undistributed income of prior years (Election required - see instructions)		NONE		
c Treated as distributions out of corpus (Election required - see instructions)	NONE			
d Applied to 2011 distributable amount				64,950.
e Remaining amount distributed out of corpus	NONE			
5 Excess distributions carryover applied to 2011 (If an amount appears in column (d), the same amount must be shown in column (a))	NONE			NONE
6 Enter the net total of each column as indicated below:				
a Corpus. Add lines 3f, 4c, and 4e Subtract line 5	NONE			
b Prior years' undistributed income. Subtract line 4b from line 2b		NONE		
c Enter the amount of prior years' undistributed income for which a notice of deficiency has been issued, or on which the section 4942(a) tax has been previously assessed		NONE		
d Subtract line 6c from line 6b Taxable amount - see instructions		NONE		
e Undistributed income for 2010. Subtract line 4a from line 2a Taxable amount - see instructions				
f Undistributed income for 2011. Subtract lines 4d and 5 from line 1 This amount must be distributed in 2012				97,079.
7 Amounts treated as distributions out of corpus to satisfy requirements imposed by section 170(b)(1)(F) or 4942(g)(3) (see instructions)	NONE			
8 Excess distributions carryover from 2006 not applied on line 5 or line 7 (see instructions)	NONE			
9 Excess distributions carryover to 2012. Subtract lines 7 and 8 from line 6a	NONE			
10 Analysis of line 9:				
a Excess from 2007	NONE			
b Excess from 2008	NONE			
c Excess from 2009	NONE			
d Excess from 2010	NONE			
e Excess from 2011	NONE			

Part XIV Private Operating Foundations (see instructions and Part VII-A, question 9)

NOT APPLICABLE

1a If the foundation has received a ruling or determination letter that it is a private operating foundation, and the ruling is effective for 2011, enter the date of the ruling

b Check box to indicate whether the foundation is a private operating foundation described in section 4942(j)(3) or 4942(j)(5)

Table with columns: Tax year (a) 2011, (b) 2010, (c) 2009, (d) 2008, (e) Total. Rows include: 2a Adjusted net income, 2b 85% of line 2a, 2c Qualifying distributions, 2d Exempt activities, 2e Qualifying distributions made directly, 3 Alternative tests (Assets, Endowment, Support).

Part XV Supplementary Information (Complete this part only if the foundation had \$5,000 or more in assets at any time during the year - see instructions.)

1 Information Regarding Foundation Managers:

a List any managers of the foundation who have contributed more than 2% of the total contributions received by the foundation before the close of any tax year (but only if they have contributed more than \$5,000). (See section 507(d)(2).)

N/A

b List any managers of the foundation who own 10% or more of the stock of a corporation (or an equally large portion of the ownership of a partnership or other entity) of which the foundation has a 10% or greater interest.

N/A

2 Information Regarding Contribution, Grant, Gift, Loan, Scholarship, etc., Programs:

Check here [X] if the foundation only makes contributions to preselected charitable organizations and does not accept unsolicited requests for funds. If the foundation makes gifts, grants, etc. (see instructions) to individuals or organizations under other conditions, complete items 2a, b, c, and d.

a The name, address, and telephone number of the person to whom applications should be addressed:

b The form in which applications should be submitted and information and materials they should include:

c Any submission deadlines:

d Any restrictions or limitations on awards, such as by geographical areas, charitable fields, kinds of institutions, or other factors:

Part XV Supplementary Information (continued)

3 Grants and Contributions Paid During the Year or Approved for Future Payment

Recipient Name and address (home or business)	If recipient is an individual, show any relationship to any foundation manager or substantial contributor	Foundation status of recipient	Purpose of grant or contribution	Amount
<p>a Paid during the year</p> <p>SEE STATEMENT 10</p>				
Total				▶ 3a 160,417.
<p>b Approved for future payment</p>				
Total				▶ 3b

FORM 990PF, PART I - DIVIDENDS AND INTEREST FROM SECURITIES
 =====

DESCRIPTION	REVENUE AND EXPENSES PER BOOKS	NET INVESTMENT INCOME
AT&T INC	1,860.	1,860.
AT&T INC 4.95% 01/15/2013	2,475.	2,475.
AUTOMATIC DATA PROC	864.	864.
B B & T CORP	1,024.	1,024.
BCE INC NEW	330.	330.
BRISTOL MYERS SQUIBB CO	1,980.	1,980.
CARDINAL HEALTH INC	194.	194.
CHEVRONTEXACO CORP	1,622.	1,622.
CHUBB CORP W/1 RT/SH	920.	920.
CHURCH & DWIGHT CO INC W/1 RT/SH	306.	306.
COLGATE PALMOLIVE	1,078.	1,078.
CONOCOPHILLIPS	1,683.	1,683.
ECOLAB INC	131.	131.
EMERSON ELEC CO W/1 RT/SH	1,256.	1,256.
EXXON MOBIL CORP	1,203.	1,203.
FRANKLIN RES INC	756.	756.
GENERAL DYNAMICS W/1 RT/SH	816.	816.
GENERAL ELECTRIC CO	289.	289.
GENERAL MILLS INC W/1 RT/SH	1,038.	1,038.
HALLIBURTON CO W/1 RT/SH	144.	144.
HEWLETT PACKARD	180.	180.
HUNTINGTON MID CORP AMERICA FD III	54.	54.
HUNTINGTON INTL EQUITY FUND III	2,524.	2,524.
HUNTINGTON DISCIPLINED EQUITY FD TR III	596.	596.
HUNTINGTON REAL STRATEGIES FUND III	332.	332.
ITT INDUSTRIES INC	450.	450.
ILLINOIS TOOL WORKS	1,035.	1,035.
IBM CORP	1,010.	1,010.
J P MORGAN CHASE PFD 7.000% CALLABLE 02/	7,000.	7,000.
JP MORGAN CHASE & CO	820.	820.
KROGER CO W/1 RT/SH	286.	286.
LOWES COS INC W/1 RT/SH	750.	750.

FORM 990PF, PART I - DIVIDENDS AND INTEREST FROM SECURITIES

DESCRIPTION	REVENUE AND EXPENSES PER BOOKS	NET INVESTMENT INCOME
MARATHON OIL CORP	600.	600.
MATTEL INC W/1 RT/SH	920.	920.
MCDONALDS CORP W/1 RT/SH	1,518.	1,518.
MEDTRONIC INC W/1 RT/SH	865.	865.
MERCK & CO INC	1,976.	1,976.
MICROSOFT CORP	448.	448.
HUNTINGTON SHORT&INTER FIXED FD	3,401.	3,401.
MOLSON COORS BREWING CO B	420.	420.
HUNTINGTON CONSERVATIVE DEPOSIT ACCOUNT	513.	513.
NEXTERA ENERGY INC	1,210.	1,210.
NIKE INC CL B	403.	403.
OCCIDENTAL PETE	968.	968.
ORACLE CORPORATION W/1 RT/SH	391.	391.
OPPENHEIMER DEVELOPING MARKETS FUND - CL	1,116.	1,116.
PACKAGING CORP OF AMERICA	935.	935.
PEABODY ENERGY CORP COM	64.	64.
PEPSICO INC	1,095.	1,095.
PFIZER INC 4.45% 03/15/2012	2,738.	2,738.
PRAXAIR INC	700.	700.
PROCTER & GAMBLE CO	1,234.	1,234.
QUEST DIAGNOSTICS INC	290.	290.
ROYAL DUTCH SHELL PLC -ADR	1,008.	1,008.
TECHNOLOGY ENERGY SELECT SPDR	234.	234.
UTILITIES TECHNOLOGY SELECT SPDR	1,412.	1,412.
TECO ENERGY INC W/1 RT/SH	1,615.	1,615.
TARGET CORP	1,018.	1,018.
TEVA PHARMACEUTICAL INDS ADR	591.	591.
TEXAS INSTR INC W/1 RT/SH	980.	980.
3M CO	1,100.	1,100.
TRAVELERS COS INC	1,352.	1,352.
U S BANCORP	775.	775.
VERIZON WIRELESS INC /CELLCO PART 3.75%	938.	938.
VODAFONE GROUP PLC	1,731.	1,731.
CMS834 676N 04/03/2012 08:24:16	1055225707	

FORM 990PF, PART I - DIVIDENDS AND INTEREST FROM SECURITIES

DESCRIPTION	REVENUE AND EXPENSES PER BOOKS	NET INVESTMENT INCOME
WAL MART STORES INC	978.	978.
WAL-MART STORES INC 4.125% 02/15/2011	1,031.	1,031.
WALGREEN CO W/1 RT/SH	405.	405.
WELLS FARGO & CO NEW W/1 RT/SH	672.	672.
ACCENTURE PLC CL A	1,125.	1,125.
HUNTINGTON EQUITY PROTECTION STRATEGIC C	1,160.	1,160.
TOTAL	74,936.	74,936.

FORM 990PF, PART I - OTHER INCOME
=====

DESCRIPTION -----	REVENUE AND EXPENSES PER BOOKS -----	NET INVESTMENT INCOME -----
TOTALS	372.	372.

FORM 990PF, PART I - TAXES
=====

DESCRIPTION	REVENUE AND EXPENSES PER BOOKS	NET INVESTMENT INCOME	CHARITABLE PURPOSES
FOREIGN TAXES	229.	229.	
OTHER TAXES	200.		
FOREIGN TAXES ON QUALIFIED FOR	409.	409.	200.
FOREIGN TAXES ON NONQUALIFIED	28.	28.	
TOTALS	866.	666.	200.

KIBBLE FOUNDATION 1055225707

31-6175971

FORM 990PF, PART II - OTHER INVESTMENTS
=====

DESCRIPTION	COST/ FMV	C OR F
-----	-----	-----

SCHEDULE ATTACHED		C
INCOME CASH		C

TOTALS

FORM 990PF, PART III - OTHER DECREASES IN NET WORTH OR FUND BALANCES

=====

DESCRIPTION -----	AMOUNT -----
NET INCOME BETWEEN TAX YEARS	255.
BOND PREMIUM AMORTIZATION	1,270.

TOTAL	1,525.
	=====

FORM 990PF, PART VIII - LIST OF OFFICERS, DIRECTORS, AND TRUSTEES
=====

OFFICER NAME:
 DAVID SMITH
 ADDRESS:
 3548 E. HIAWATHA DRIVE
 OKEMOS, MI 48864
 TITLE:
 ADVISOR
 AVERAGE HOURS PER WEEK DEVOTED TO POSITION: 1
 COMPENSATION 1,500.

OFFICER NAME:
 PAT DRAKE
 ADDRESS:
 1642 REESE ROAD
 SHARPSBURG, GA 30277
 TITLE:
 ADVISOR
 AVERAGE HOURS PER WEEK DEVOTED TO POSITION: 1
 COMPENSATION 1,500.

OFFICER NAME:
 DIANA MCLENEY
 ADDRESS:
 280 CRAMER DRIVE
 MARIETTA, OH 45750
 TITLE:
 ADVISOR
 AVERAGE HOURS PER WEEK DEVOTED TO POSITION: 1
 COMPENSATION 1,500.

OFFICER NAME:
 HUNTINGTON NATIONAL BANK
 ADDRESS:
 PO BOX 1558 DEPT EA4E86
 COLUMBUS, OH 43216
 TITLE:
 TRUSTEE
 AVERAGE HOURS PER WEEK DEVOTED TO POSITION: 6
 COMPENSATION 23,844.

TOTAL COMPENSATION: 28,344.
 =====

=====

RECIPIENT NAME:

HOCKING COLLEGE

ADDRESS:

3301 HOCKING PARKWAY
NELSONVILLE, OH 45764

RELATIONSHIP:

NONE

PURPOSE OF GRANT:

EDUCATIONAL

FOUNDATION STATUS OF RECIPIENT:

CHARITY

AMOUNT OF GRANT PAID 13,421.

RECIPIENT NAME:

THE OHIO STATE UNIVERSITY

ADDRESS:

ENARSON HALL 154 W. 12TH AVENUE
COLUMBUS, OH 43210

RELATIONSHIP:

NONE

PURPOSE OF GRANT:

EDUCATIONAL

FOUNDATION STATUS OF RECIPIENT:

CHARITY

AMOUNT OF GRANT PAID 5,335.

RECIPIENT NAME:

OHIO UNIVERSITY

ADDRESS:

108 CUTLER HALL
ATHENS, OH 45701

RELATIONSHIP:

NONE

PURPOSE OF GRANT:

EDUCATIONAL

FOUNDATION STATUS OF RECIPIENT:

CHARITY

AMOUNT OF GRANT PAID 67,661.

=====

RECIPIENT NAME:

RIO GRANDE UNIVERSITY

ADDRESS:

218 N. COLLEGE AVENUE

RIO GRANDE, OH 45674

RELATIONSHIP:

NONE

PURPOSE OF GRANT:

EDUCATIONAL

FOUNDATION STATUS OF RECIPIENT:

CHARITY

AMOUNT OF GRANT PAID 72,500.

RECIPIENT NAME:

MARIETTA COLLEGE

PURPOSE OF GRANT:

EDUCATIONAL

FOUNDATION STATUS OF RECIPIENT:

CHARITY

AMOUNT OF GRANT PAID 1,500.

RECIPIENT NAME:

WASHINGTON STATE COMMUNITY COLLEGE

ADDRESS:

710 COLEGATE DRIVE

MARIETTA, OH 45750

RELATIONSHIP:

NONE

PURPOSE OF GRANT:

EDUCATIONAL

FOUNDATION STATUS OF RECIPIENT:

CHARITY

TOTAL GRANTS PAID: 160,417.

=====

KIBBLE FOUNDATION 1055225707
 Schedule D Detail of Long-term Capital Gains and Losses

31-6175971

Description	Date Acquired	Date Sold	Gross Sales Price	Cost or Other Basis	Long-term Gain/Loss
CAPITAL GAINS (LOSSES) HELD FOR INVESTMENT PURPOSES					
50000. WAL-MART STORES INC 4.125% 02/15/2011	06/30/2008	02/15/2011	50,000.00	50,000.00	
50000. VERIZON WIRELESS INC /CELLCO PART 3.75%	05/20/2009	05/20/2011	50,000.00	50,000.00	
375. AT&T INC	07/19/2010	08/02/2011	10,976.00	9,356.00	1,620.00
800. AUTOMATIC DATA PROC	11/12/2008	08/02/2011	39,912.00	27,815.00	12,097.00
2000. BRISTOL MYERS SQUIBB CO	01/21/2004	08/02/2011	55,900.00	61,443.00	-5,543.00
800. CHUBB CORP W/1 RT/SH	07/15/2009	08/02/2011	49,728.00	33,439.00	16,289.00
850. CONOCOPHILLIPS	07/16/2009	08/02/2011	60,391.00	35,724.00	24,667.00
600. GENERAL DYNAMICS W/1 RT/SH	07/15/2009	08/02/2011	39,947.00	32,513.00	7,434.00
1200. GENERAL MILLS INC W/1 RT/SH	07/15/2009	08/02/2011	43,835.00	35,860.00	7,975.00
900. HEWLETT PACKARD	05/23/2008	08/02/2011	31,040.00	40,563.00	-9,523.00
600. ITT INDUSTRIES INC	07/15/2009	08/02/2011	30,791.00	26,495.00	4,296.00
100. IBM CORP	11/12/2008	08/02/2011	17,897.00	8,155.00	9,742.00
1200. MARATHON OIL CORP	07/16/2009	08/02/2011	35,327.00	21,358.00	13,969.00
600. MARATHON PETROLEUM CORP	07/16/2009	08/02/2011	25,950.00	14,447.00	11,503.00
350. MEDCO HEALTH SOLUTIONS NEW COMMON	03/23/1993	08/02/2011	21,221.00	3,123.00	18,098.00
1400. MICROSOFT CORP	05/23/2008	08/02/2011	37,732.00	39,242.00	-1,510.00
700. MOLSON COORS BREWING CO B	11/12/2008	08/02/2011	30,848.00	28,801.00	2,047.00
650. NIKE INC CL B	07/15/2009	08/02/2011	56,610.00	34,345.00	22,265.00
1700. PACKAGING CORP OF AMERICA	07/19/2010	08/02/2011	44,123.00	38,487.00	5,636.00
450. TECHNOLOGY ENERGY SELECT SPDR	07/16/2009	08/02/2011	33,695.00	21,455.00	12,240.00
1000. UTILITIES TECHNOLOGY SELECT SPDR	07/15/2009	08/02/2011	25,320.00	18,590.00	6,730.00
150. STERICYLCE INC	07/15/2009	08/02/2011	12,151.00	7,632.00	4,519.00
600. U S BANCORP	07/15/2009	08/02/2011	15,186.00	10,925.00	4,261.00
1200. VODAFONE GROUP PLC	12/31/1999	08/02/2011	33,074.00	1.00	33,073.00
75000. CREDIT SUISSE GOLD LINKED NOTE - MATUREIT	03/19/2010	12/07/2011	96,338.00	75,000.00	21,338.00
50000. PFIZER INC 4.45% 03/15/2012	04/07/2009	12/08/2011	50,529.00	50,331.00	198.00
TOTAL CAPITAL GAINS (LOSSES) HELD FOR INVESTMENT PURPOSES			998,521.00	775,100.00	223,421.00
Totals			998,521.00	775,100.00	223,421.00

JSA
1F0970 2 000

FEDERAL CAPITAL GAIN DIVIDENDS
=====

SHORT-TERM CAPITAL GAIN DIVIDENDS

HUNTINGTON MID CORP AMERICA FD III

23.00

TOTAL SHORT-TERM CAPITAL GAIN DIVIDENDS

23.00

LONG-TERM CAPITAL GAIN DIVIDENDS

15% RATE CAPITAL GAIN DIVIDENDS

HUNTINGTON MID CORP AMERICA FD III

7,027.00

TOTAL 15% RATE CAPITAL GAIN DIVIDENDS

7,027.00

TOTAL LONG-TERM CAPITAL GAIN DIVIDENDS

7,027.00
=====

GAINS AND LOSSES FROM PASS-THRU ENTITIES
=====

NET SHORT-TERM GAIN (LOSS) FROM PARTNERSHIPS, S CORPORATIONS
AND OTHER FIDUCIARIES

COMMON TRUST FUNDS

-11,943.00

TOTAL NET SHORT-TERM GAIN OR LOSS (ROUNDED)

-11,943.00
=====

**FORM 990-PF - PART IV
CAPITAL GAINS AND LOSSES FOR TAX ON INVESTMENT INCOME**

Kind of Property		Description				P or D	Date acquired	Date sold
Gross sale price less expenses of sale	Depreciation allowed/ allowable	Cost or other basis	FMV as of 12/31/69	Adj basis as of 12/31/69	Excess of FMV over adj basis		Gain or (loss)	
		TOTAL SHORT-TERM CAPITAL GAIN DIVIDENDS					23.	
		TOTAL SHORT-TERM COMMON TRUST FUND AND PARTNERSHIP, S CORPORATION, AND OTHER ESTATES OR TRUST GAIN OR LOSS					-11,943.	
		TOTAL LONG-TERM CAPITAL GAIN DIVIDENDS					7,027.	
50,000.00		50000. WAL-MART STORES INC 4.125% 02/15/ PROPERTY TYPE: SECURITIES 50,000.00					06/30/2008	02/15/2011
50,000.00		50000. VERIZON WIRELESS INC /CELLCO PART PROPERTY TYPE: SECURITIES 50,000.00					05/20/2009	05/20/2011
10,976.00		375. AT&T INC PROPERTY TYPE: SECURITIES 9,356.00					07/19/2010	08/02/2011
39,912.00		800. AUTOMATIC DATA PROC PROPERTY TYPE: SECURITIES 27,815.00					11/12/2008	08/02/2011
55,900.00		2000. BRISTOL MYERS SQUIBB CO PROPERTY TYPE: SECURITIES 61,443.00					01/21/2004	08/02/2011
49,728.00		800. CHUBB CORP W/1 RT/SH PROPERTY TYPE: SECURITIES 33,439.00					07/15/2009	08/02/2011
60,391.00		850. CONOCOPHILLIPS PROPERTY TYPE: SECURITIES 35,724.00					07/16/2009	08/02/2011
39,947.00		600. GENERAL DYNAMICS W/1 RT/SH PROPERTY TYPE: SECURITIES 32,513.00					07/15/2009	08/02/2011
43,835.00		1200. GENERAL MILLS INC W/1 RT/SH PROPERTY TYPE: SECURITIES 35,860.00					07/15/2009	08/02/2011

**FORM 990-PF - PART IV
CAPITAL GAINS AND LOSSES FOR TAX ON INVESTMENT INCOME**

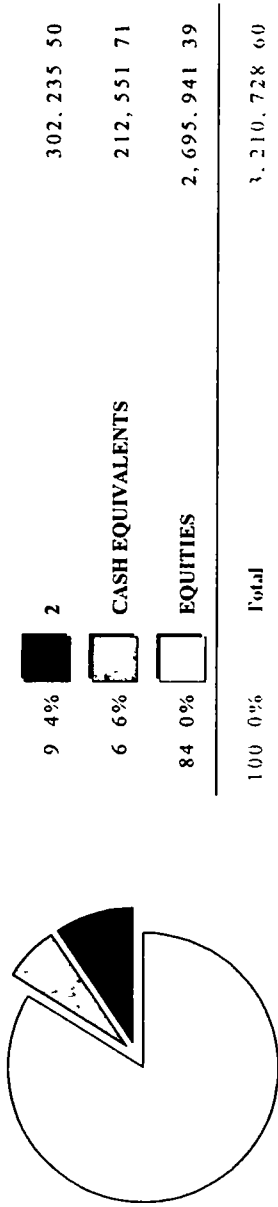
Kind of Property		Description				P or D	Date acquired	Date sold
Gross sale price less expenses of sale	Depreciation allowed/ allowable	Cost or other basis	FMV as of 12/31/69	Adj basis as of 12/31/69	Excess of FMV over adj basis		Gain or (loss)	
31,040.00		900. HEWLETT PACKARD PROPERTY TYPE: SECURITIES 40,563.00					05/23/2008	08/02/2011
							-9,523.00	
30,791.00		600. ITT INDUSTRIES INC PROPERTY TYPE: SECURITIES 26,495.00					07/15/2009	08/02/2011
							4,296.00	
17,897.00		100. IBM CORP PROPERTY TYPE: SECURITIES 8,155.00					11/12/2008	08/02/2011
							9,742.00	
35,327.00		1200. MARATHON OIL CORP PROPERTY TYPE: SECURITIES 21,358.00					07/16/2009	08/02/2011
							13,969.00	
25,950.00		600. MARATHON PETROLEUM CORP PROPERTY TYPE: SECURITIES 14,447.00					07/16/2009	08/02/2011
							11,503.00	
21,221.00		350. MEDCO HEALTH SOLUTIONS NEW COMMON PROPERTY TYPE: SECURITIES 3,123.00					03/23/1993	08/02/2011
							18,098.00	
37,732.00		1400. MICROSOFT CORP PROPERTY TYPE: SECURITIES 39,242.00					05/23/2008	08/02/2011
							-1,510.00	
30,848.00		700. MOLSON COORS BREWING CO B PROPERTY TYPE: SECURITIES 28,801.00					11/12/2008	08/02/2011
							2,047.00	
56,610.00		650. NIKE INC CL B PROPERTY TYPE: SECURITIES 34,345.00					07/15/2009	08/02/2011
							22,265.00	
44,123.00		1700. PACKAGING CORP OF AMERICA PROPERTY TYPE: SECURITIES 38,487.00					07/19/2010	08/02/2011
							5,636.00	
33,695.00		450. TECHNOLOGY ENERGY SELECT SPDR PROPERTY TYPE: SECURITIES 21,455.00					07/16/2009	08/02/2011
							12,240.00	

**FORM 990-PF - PART IV
CAPITAL GAINS AND LOSSES FOR TAX ON INVESTMENT INCOME**

Kind of Property		Description				P or D	Date acquired	Date sold
Gross sale price less expenses of sale	Depreciation allowed/ allowable	Cost or other basis	FMV as of 12/31/69	Adj basis as of 12/31/69	Excess of FMV over adj basis		Gain or (loss)	
25,320.00		1000. UTILITIES TECHNOLOGY SELECT SPDR PROPERTY TYPE: SECURITIES 18,590.00					07/15/2009	08/02/2011 6,730.00
12,151.00		150. STERICYLCE INC PROPERTY TYPE: SECURITIES 7,632.00					07/15/2009	08/02/2011 4,519.00
15,186.00		600. U S BANCORP PROPERTY TYPE: SECURITIES 10,925.00					07/15/2009	08/02/2011 4,261.00
33,074.00		1200. VODAFONE GROUP PLC PROPERTY TYPE: SECURITIES 1.00					12/31/1999	08/02/2011 33,073.00
96,338.00		75000. CREDIT SUISSE GOLD LINKED NOTE - PROPERTY TYPE: SECURITIES 75,000.00					03/19/2010	12/07/2011 21,338.00
50,529.00		50000. PFIZER INC 4.45% 03/15/2012 PROPERTY TYPE: SECURITIES 50,331.00					04/07/2009	12/08/2011 198.00
TOTAL GAIN (LOSS)							----- 218,528. =====	

1055225707
SUMMARY OF INVESTMENTS
KIBBLE FOUNDATION TRUST
UNDER WILL DATED 03/29/74

Investment Allocation



Investment Summary

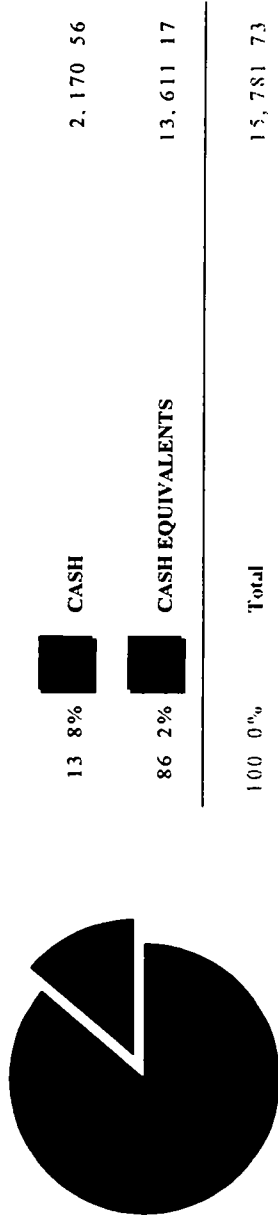
	Market Value	%	Estimated Income	Current Yield
CASH EQUIVALENTS				
CASH MANAGEMENT FUNDS-TAXABLE	212,551.71	6.62	210	0.10
2				
CORPORATE OBLIGATIONS	52,111.00	1.62	2,475	4.75
HUNTINGTON FUNDS-FIXED	250,124.50	7.79	3,499	1.40
TOTAL 2	302,235.50	9.41	5,974	1.98
EQUITIES				
PREFERRED STOCK	102,200.00	3.18	7,000	6.85
COMMON STOCK	1,880,878.75	58.58	41,651	2.21
COMMON STOCK-FOREIGN	129,372.00	4.03	3,692	2.85
HUNTINGTON FUNDS-EQUITY	539,180.45	16.79	4,834	0.90
MUTUAL FUNDS EQUITY	44,310.19	1.38	1,032	2.33

Investment Summary

	Market Value	%	Estimated Income	Current Yield
TOTAL EQUITIES	2,695,941.39	83.97	58,209	2.16
CASH				
PRINCIPAL CASH				
TOTAL FUND	3,210,728.60	100.00	64,393	2.01

SUMMARY OF INVESTED INCOME

Investment Allocation



Investment Summary

	Market Value	%	Estimated Income	Current Yield
CASH EQUIVALENTS				
CASH MANAGEMENT FUNDS-TAXABLE	13,611.17	86.25	13	0.10
CASH				
INCOME CASH	2,170.56	13.75	0	0.00

Investment Summary

Market Value	%	Estimated Income	Current Yield
15,781.73	100.00	1.3	0.08

TOTAL FUND

SCHEDULE OF INVESTMENTS

UNITS/ SHARES	NAME OF SECURITY	TOT COST	EST INC	YLD MKT	MARKET VALUE	% TOT MKT
	CASH EQUIVALENTS					
	CASH MANAGEMENT FUNDS-TAXABLE					
	HUNTINGTON CONSERVATIVE DEPOSIT ACCOUNT	212,551.71	210	0.1	212,551.71	6.620
2						
	CORPORATE OBLIGATIONS					
50,000	AT&T INC 4.95% 01/15/2013	50,835.39	2,475	4.7	52,111.00	1.623
	HUNTINGTON FUNDS-FIXED					
12,450	HUNTINGTON SHORT AND INTERMEDIATE FIXED INCOME FUND III	250,000.00	3,499	1.4	250,124.50	7.790
	TOTAL 2	300,835.39*	5,974*	2.0*	302,235.50*	9.413*
	EQUITIES					
	PREFERRED STOCK					
4,000	JP MORGAN CHASE 2/15/32 SERIES PFD 7%	100,000.00	7,000	6.8	102,200.00	3.183
	COMMON STOCK					
800	AT&T INC	19,960.00	1,408	5.8	24,192.00	0.753
100	APPLE INC	39,097.45	0	0.0	40,500.00	1.261
1,600	BB&T	36,317.12	1,024	2.5	40,272.00	1.254

DULE OF INVESTMENTS

1055225707

12/31/2011

PAGE 4

UNITS/ SHARES	NAME OF SECURITY	TOT COST	EST INC	YLD MKT	MARKET % TOT VALUE MKT
650	BCE INC NEW	24,687 52	1,398	5 2	27,085 50 0 844
900	CARDINAL HEALTH INC	38,106 00	774	2 1	36,549 00 1 138
525	CHEVRON CORPORATION	37,809 45	1,701	3 0	55,860 00 1 740
900	CHURCH & DWIGHT CO INC W/1 RT/SH	35,953 02	612	1 5	41,184 00 1 283
475	COLGATE PALMOLIVE	39,513 97	1,102	2 5	43,885 25 1 367
2,175	EMC CORP/MASS	44,456 78	0	0 0	46,849 50 1 459
750	ECOLAB INC	36,795 00	600	1 4	43,357 50 1 350
875	EMERSON ELECTRIC CO	27,898 85	1,400	3 4	40,766 25 1 270
650	EXXON MOBIL CORP	38,063 42	1,222	2 2	55,094 00 1 716
700	FISERV INC	40,908 00	0	0 0	41,118 00 1 281
300	FRANKLIN RES INC	37,170 00	324	1 1	28,818 00 0.898
1,925	GENERAL ELECTRIC CO	33,418 00	1,309	3 8	34,476 75 1 074
900	GILEAD SCIENCES INC W/1 RT/SH	36,855 00	0	0 0	36,837 00 1 147
800	HALLIBURTON CO	42,728 00	288	1 0	27,608 00 0 860
750	ILLINOIS TOOL WORKS	39,435 00	1,080	3 1	35,032 50 1 091
300	IBM CORP	24,465 00	900	1 6	55,164 00 1 718
1,025	JP MORGAN CHASE & CO	39,390 75	1,025	3 0	34,081 25 1 061
1,300	KROGER CO	31,616 00	598	1 9	31,486 00 0 981

12/31/2011

1055225707

DULE OF INVESTMENTS

UNITS/ SHARES	NAME OF SECURITY	TOT COST	EST INC	YLD MKT	MARKET VALUE	% TOT MKT
1,500	LOWES COMPANIES INC	27,726 00	840	2 2	38,070 00	1 186
2,000	MATTEL INC	51,351 20	1,840	3 3	55,520 00	1 729
600	MCDONALDS CORP	33,496 00	1,680	2 8	60,198 00	1 875
350	MEDCO HEALTH SOLUTIONS NEW COMMON	3,123 35	0	0 0	19,565 00	0 609
925	MEDTRONIC INC	34,463 65	897	2 5	35,381 25	1 102
1,300	MILRCK & CO INC	49,360 83	2,184	4 5	49,010 00	1 526
600	NEXTERA ENERGY INC	34,146 20	1,320	3 6	36,528 00	1 138
550	OCCIDENTAL PETROLEUM CORP	36,577 53	1,012	2 0	51,535 00	1 605
1,700	ORACLE CORPORATION FORMERLY ORACLE SYS CORP W/I RT/SH	36,533 00	408	0 9	43,605 00	1 358
750	PEABODY ENERGY CORP W/I RT/SH	41,621 03	255	1 0	24,832 50	0 773
550	PEPSICO INC	31,514 01	1,133	3 1	36,492 50	1 137
350	PRAXAIR INC	20,527 50	700	1 9	37,415 00	1 165
600	PROCTER & GAMBLE CO	39,234 00	1,260	3 1	40,026 00	1 247
725	QUEST DIAGNOSTICS INC	38,927 36	493	1 2	42,093 50	1 311
3,200	TECHNOLOGY SELECT SECTOR SPDR FUND	59,488 00	1,232	1 5	81,440 00	2 536
450	STERICYCLE INC	22,896 00	0	0 0	35,064 00	1 092
1,900	TECO ENERGY INC	6,346 00	1,634	4 5	36,366 00	1 133

DULE OF INVESTMENTS

UNITS/ SHARES	NAME OF SECURITY	TOT COST	EST INC	YLD MKT	MARKET % TOT VALUE MKT
925	TARGET CORP	36,868 83	1,110	2 3	47,378 50 1 476
1,750	TEXAS INSTRUMENTS INC	38,409 35	1,190	2 3	50,942 50 1 587
500	3M CO	38,110 00	1,100	2 7	40,865 00 1 273
850	TRAVELERS COS INC	34,559 47	1,394	2 8	50,294 50 1 566
1,400	U S BANCORP	25,492 60	700	1 8	37,870 00 1 179
700	WAL-MART STORES INC	34,004 74	1,022	2 4	41,832 00 1 303
900	WALGREEN CO	34,794 00	810	2 7	29,754 00 0 927
1,400	WELLS FARGO & CO	35,571 48	672	1 7	38,584 00 1 202
	TOTAL COMMON STOCK	1,589,786 46*	41,651*	2 2*	1,880,878 75* 58 581*
	COMMON STOCK-FOREIGN				
600	ROYAL DUTCH SHELL PLC -ADR	43,229 10	1,714	3 9	43,854 00 1 366
800	TEVA PHARMACEUTICAL -SP ADR	40,233 50	628	1 9	32,288 00 1 006
1,000	ACCENTURE PLC CL A	27,730 00	1,350	2 5	53,230 00 1 658
	TOTAL COMMON STOCK-FOREIGN	111,192 60*	3,692*	2 9*	129,372 00* 4 029*
	HUNTINGTON FUNDS-EQUITY				
4,901 961	HUNTINGTON MID CORP AMERICA FUND III	65,000 00	54	0 1	67,450 98 2 101
17,421 603	HUNTINGTON INTERNATIONAL EQUITY FUND III	200,000 00	2,178	1 2	175,783 97 5 475
14,850 424	HUNTINGTON DISCIPLINED EQUITY FD TR III	134,797 56	1,293	0 9	145,682 66 4 537

DULE OF INVESTMENTS

UNITS/ SHARES	NAME OF SECURITY	TOT COST	EST INC	YLD MKT	MARKET % TOT VALUE MKT
5,949.43	HUNTINGTON SITUS FUND III	120,000 00	975 0 8		116,192 37 3 619
4,765 101	HUNTINGTON REAL STRATEGIES FUND III	35,500 00	334 1 0		34,070 47 1 061
	TOTAL HUNTINGTON FUNDS-EQUITY	555,297 56*	4,834* 0 9*		539,180 45* 16 793*
	MUTUAL FUNDS EQUITY				
1,529 52	OPPENHEIMER DEVELOPING MARKETS FUND - CLASS Y	50,000 00	1,032 2 3		44,310 19 1 380
	TOTAL EQUITIES	2,406,276 62*	58,209* 2 2*		2,695,941 39* 83 967*
	PRINCIPAL CASH	0 00	0 0		0 00 0 000
	TOTAL FUND	2,919 663 72*	64,393* 2 0*		3,210,728 60*100 000*

SCHEDULE OF INCOME INVESTMENTS

UNITS/ SHARES	NAME OF SECURITY	TOT COST	EST INC	YLD MKT	MARKET % TOT VALUE MKT
	CASH EQUIVALENTS				
	CASH MANAGEMENT FUNDS-TAXABLE				
	HUNTINGTON CONSERVATIVE DEPOSIT ACCOUNT	13,611 17	13 0 1		13,611 17 86 246
	INCOME CASH	2,170 56	0 0		2,170 56 13 754
	TOTAL FUND	15,781 73*	13* 0 1*		15,781 73*100 000*

1055225707
MATURITY SCHEDULE

12/31/2011

PAGE 8

Maturing :	Federal Tax Cost	Current Market Value	Face Value	% at Market
2011				
2012				
2013	50,835 39	52,111 00	50,000 00	100.00
2014				
2015				
2016				
2017				
2018				
2019				
2020				
TEN TO TWENTY YEARS				
OVER TWENTY YEARS				
TOTAL	50,835 39	52,111 00	50,000 00	100 00

MATURING NEXT 365 DAYS

Information may be a combination of maturity and prerefunded dates