



See a Social Security Number? Say Something!  
Report Privacy Problems to <https://public.resource.org/privacy>  
Or call the IRS Identity Theft Hotline at 1-800-908-4490



Form **990**

**Return of Organization Exempt From Income Tax**

Under section 501(c), 527, or 4947(a)(1) of the Internal Revenue Code (except black lung benefit trust or private foundation)

OMB No 1545-0047

**2011**

Department of the Treasury  
Internal Revenue Service

The organization may have to use a copy of this return to satisfy state reporting requirements.

Open to Public Inspection

**A For the 2011 calendar year, or tax year beginning** \_\_\_\_\_ **and ending** \_\_\_\_\_

**B** Check if applicable:  
 Address change  
 Name change  
 Initial return  
 Terminated  
 Amended return  
 Application pending

**C Name of organization**  
**MTI INTEGRATED BUSINESS DEVELOPMENT INC**  
 Doing Business As \_\_\_\_\_  
 Number and street (or P.O. box if mail is not delivered to street address) Room/suite  
**151 KNOLLCROFT ROAD, BUILDING 53 W311**  
 City or town, state or country, and ZIP + 4  
**LYONS, NJ 07939**

**D Employer identification number**  
**27-1732693**

**E Telephone number**  
**973-714-7518**

**G Gross receipts \$** **225,502.**

**H(a) Is this a group return for affiliates?**  Yes  No  
**H(b) Are all affiliates included?**  Yes  No  
 If "No," attach a list. (see instructions)

**I Tax-exempt status:**  501(c)(3)  501(c)( ) (insert no.)  4947(a)(1) or  527

**J Website:** **N/A**

**K Form of organization:**  Corporation  Trust  Association  Other

**L Year of formation:** **2010** **M State of legal domicile:** **NJ**

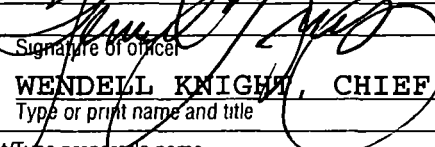
**H(c) Group exemption number** \_\_\_\_\_

**Part I Summary**

1 Briefly describe the organization's mission or most significant activities: <b>MTI INTEGRATED BUSINESS DEVELOPMENT, INC.'S MISSION IS TO PROVIDE HOUSING, INTERNSHIPS AND</b>			
2 Check this box <input type="checkbox"/> if the organization discontinued its operations or disposed of more than 25% of its net assets.			
3	Number of voting members of the governing body (Part VI, line 1a)	3	4
4	Number of independent voting members of the governing body (Part VI, line 1b)	4	3
5	Total number of individuals employed in calendar year 2011 (Part V, line 2a)	5	1
6	Total number of volunteers (estimate if necessary)	6	1
7a	Total unrelated business revenue from Part VIII, column (C), line 12	7a	0.
7b	Net unrelated business taxable income from Form 990-T, line 34 (c)	7b	0.
Revenue	8 Contributions and grants (Part VIII, line 11)	Prior Year	Current Year
	9 Program service revenue (Part VIII, line 2g)	0.	75,887.
	10 Investment income (Part VIII, column (A), lines 8 and 9)	187,004.	149,595.
	11 Other revenue (Part VIII, column (A), lines 8, 9c, 10c, and 11e)	47.	20.
	12 Total revenue - add lines 8 through 11 (must equal Part VIII, column (A), line 12)	187,051.	225,502.
	Expenses	13 Grants and similar amounts paid (Part IX, column (A), lines 1-3)	0.
14 Benefits paid to or for members (Part IX, column (A), line 4)		0.	0.
15 Salaries, other compensation, employee benefits (Part IX, column (A), lines 5-10)		27,500.	71,317.
16a Professional fundraising fees (Part IX, column (A), line 11e)		0.	0.
b Total fundraising expenses (Part IX, column (D), line 25)		0.	0.
17 Other expenses (Part IX, column (A), lines 11a-11d, 11f-24e)		144,009.	156,616.
18 Total expenses. Add lines 13-17 (must equal Part IX, column (A), line 25)		171,509.	227,933.
19 Revenue less expenses. Subtract line 18 from line 12	15,542.	<2,431.>	
Net Assets or Fund Balances	20 Total assets (Part X, line 16)	Beginning of Current Year	End of Year
	21 Total liabilities (Part X, line 26)	32,622.	15,880.
	22 Net assets or fund balances. Subtract line 21 from line 20	17,080.	2,769.
		15,542.	13,111.

**Part II Signature Block**

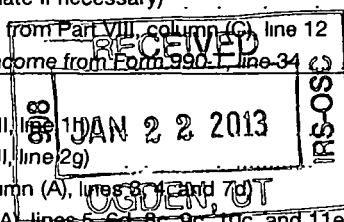
Under penalties of perjury, I declare that I have examined this return, including accompanying schedules and statements, and to the best of my knowledge and belief, it is true, correct, and complete. Declaration of preparer (other than officer) is based on all information of which preparer has any knowledge.

Sign Here:  Date: **1/9/13**  
**WENDELL KNIGHT, CHIEF EXECUTIVE OFFICER**  
 Type or print name and title

Paid Preparer Use Only:  
 Print/Type preparer's name: **STEVEN NYDICK** Preparer's signature: **STEVEN NYDICK** Date: **01/04/13** Check if self-employed:  PTIN: **P00037969**  
 Firm's name: **MADDALONI, NYDICK & KEENAN, PC** Firm's EIN: **22-3006104**  
 Firm's address: **30 COLUMBIA TURNPIKE FLORHAM PARK, NJ 07932** Phone no.: **973 822-8080**

May the IRS discuss this return with the preparer shown above? (see instructions)  Yes  No

SCANNED FEB 15 2013 Activities & Governance



Part III Statement of Program Service Accomplishments

Check if Schedule O contains a response to any question in this Part III

Input box for Schedule O check

1 Briefly describe the organization's mission:

MTI INTEGRATED BUSINESS DEVELOPMENT, INC.'S MISSION IS TO PROVIDE HOUSING, INTERNSHIPS AND EMPLOYMENT OPPORTUNITIES FOR VETERANS WITH BARRIERS TO EMPLOYMENT. SEE SCHEDULE O FOR MORE DETAILS.

2 Did the organization undertake any significant program services during the year which were not listed on the prior Form 990 or 990-EZ?

Yes No checkboxes

If "Yes," describe these new services on Schedule O.

3 Did the organization cease conducting, or make significant changes in how it conducts, any program services?

Yes No checkboxes

If "Yes," describe these changes on Schedule O.

4 Describe the organization's program service accomplishments for each of its three largest program services, as measured by expenses. Section 501(c)(3) and 501(c)(4) organizations and section 4947(a)(1) trusts are required to report the amount of grants and allocations to others, the total expenses, and revenue, if any, for each program service reported.

4a (Code ) (Expenses \$ 172,822. including grants of \$ 0. ) (Revenue \$ 149,595. )

MTI INTEGRATED BUSINESS DEVELOPMENT, INC.'S MAIN PROGRAM SERVICES ARE EMPLOYMENT SKILLS BUILDING THROUGH SITUATIONAL OBSERVATION. THE OBJECTIVE OF WHICH IS TO PROVIDE A STRUCTURED WORK ENVIRONMENT WHERE A VETERAN INTERN CAN GAIN THE NECESSARY SKILLS FOR EMPLOYMENT OPPORTUNITIES; VOCATIONAL SCHOOLS OR FORMAL COLLEGES OR UNIVERSITIES. SEE SCHEDULE O FOR MORE DETAILS.

4b (Code ) (Expenses \$ including grants of \$ ) (Revenue \$ )

4c (Code ) (Expenses \$ including grants of \$ ) (Revenue \$ )

4d Other program services (Describe in Schedule O.)

(Expenses \$ including grants of \$ ) (Revenue \$ )

4e Total program service expenses 172,822.

**Part IV Checklist of Required Schedules**

	Yes	No
1 Is the organization described in section 501(c)(3) or 4947(a)(1) (other than a private foundation)? <i>If "Yes," complete Schedule A</i>	X	
2 Is the organization required to complete Schedule B, Schedule of Contributors?	X	
3 Did the organization engage in direct or indirect political campaign activities on behalf of or in opposition to candidates for public office? <i>If "Yes," complete Schedule C, Part I</i>		X
4 <b>Section 501(c)(3) organizations.</b> Did the organization engage in lobbying activities, or have a section 501(h) election in effect during the tax year? <i>If "Yes," complete Schedule C, Part II</i>		X
5 Is the organization a section 501(c)(4), 501(c)(5), or 501(c)(6) organization that receives membership dues, assessments, or similar amounts as defined in Revenue Procedure 98-19? <i>If "Yes," complete Schedule C, Part III</i>		X
6 Did the organization maintain any donor advised funds or any similar funds or accounts for which donors have the right to provide advice on the distribution or investment of amounts in such funds or accounts? <i>If "Yes," complete Schedule D, Part I</i>		X
7 Did the organization receive or hold a conservation easement, including easements to preserve open space, the environment, historic land areas, or historic structures? <i>If "Yes," complete Schedule D, Part II</i>		X
8 Did the organization maintain collections of works of art, historical treasures, or other similar assets? <i>If "Yes," complete Schedule D, Part III</i>		X
9 Did the organization report an amount in Part X, line 21; serve as a custodian for amounts not listed in Part X; or provide credit counseling, debt management, credit repair, or debt negotiation services? <i>If "Yes," complete Schedule D, Part IV</i>		X
10 Did the organization, directly or through a related organization, hold assets in temporarily restricted endowments, permanent endowments, or quasi-endowments? <i>If "Yes," complete Schedule D, Part V</i>		X
11 If the organization's answer to any of the following questions is "Yes," then complete Schedule D, Parts VI, VII, VIII, IX, or X as applicable.		
a Did the organization report an amount for land, buildings, and equipment in Part X, line 10? <i>If "Yes," complete Schedule D, Part VI</i>	X	
b Did the organization report an amount for investments - other securities in Part X, line 12 that is 5% or more of its total assets reported in Part X, line 16? <i>If "Yes," complete Schedule D, Part VII</i>		X
c Did the organization report an amount for investments - program related in Part X, line 13 that is 5% or more of its total assets reported in Part X, line 16? <i>If "Yes," complete Schedule D, Part VIII</i>		X
d Did the organization report an amount for other assets in Part X, line 15 that is 5% or more of its total assets reported in Part X, line 16? <i>If "Yes," complete Schedule D, Part IX</i>		X
e Did the organization report an amount for other liabilities in Part X, line 25? <i>If "Yes," complete Schedule D, Part X</i>	X	
f Did the organization's separate or consolidated financial statements for the tax year include a footnote that addresses the organization's liability for uncertain tax positions under FIN 48 (ASC 740)? <i>If "Yes," complete Schedule D, Part X</i>		X
12a Did the organization obtain separate, independent audited financial statements for the tax year? <i>If "Yes," complete Schedule D, Parts XI, XII, and XIII</i>		X
b Was the organization included in consolidated, independent audited financial statements for the tax year? <i>If "Yes," and if the organization answered "No" to line 12a, then completing Schedule D, Parts XI, XII, and XIII is optional</i>		X
13 Is the organization a school described in section 170(b)(1)(A)(ii)? <i>If "Yes," complete Schedule E</i>		X
14a Did the organization maintain an office, employees, or agents outside of the United States?		X
b Did the organization have aggregate revenues or expenses of more than \$10,000 from grantmaking, fundraising, business, investment, and program service activities outside the United States, or aggregate foreign investments valued at \$100,000 or more? <i>If "Yes," complete Schedule F, Parts I and IV</i>		X
15 Did the organization report on Part IX, column (A), line 3, more than \$5,000 of grants or assistance to any organization or entity located outside the United States? <i>If "Yes," complete Schedule F, Parts II and IV</i>		X
16 Did the organization report on Part IX, column (A), line 3, more than \$5,000 of aggregate grants or assistance to individuals located outside the United States? <i>If "Yes," complete Schedule F, Parts III and IV</i>		X
17 Did the organization report a total of more than \$15,000 of expenses for professional fundraising services on Part IX, column (A), lines 6 and 11e? <i>If "Yes," complete Schedule G, Part I</i>		X
18 Did the organization report more than \$15,000 total of fundraising event gross income and contributions on Part VIII, lines 1c and 8a? <i>If "Yes," complete Schedule G, Part II</i>		X
19 Did the organization report more than \$15,000 of gross income from gaming activities on Part VIII, line 9a? <i>If "Yes," complete Schedule G, Part III</i>		X
20a Did the organization operate one or more hospital facilities? <i>If "Yes," complete Schedule H</i>		X
b If "Yes" to line 20a, did the organization attach a copy of its audited financial statements to this return?		

**Part IV Checklist of Required Schedules** (continued)

	Yes	No
21 Did the organization report more than \$5,000 of grants and other assistance to any government or organization in the United States on Part IX, column (A), line 1? <i>If "Yes," complete Schedule I, Parts I and II</i>		X
22 Did the organization report more than \$5,000 of grants and other assistance to individuals in the United States on Part IX, column (A), line 2? <i>If "Yes," complete Schedule I, Parts I and III</i>		X
23 Did the organization answer "Yes" to Part VII, Section A, line 3, 4, or 5 about compensation of the organization's current and former officers, directors, trustees, key employees, and highest compensated employees? <i>If "Yes," complete Schedule J</i>		X
24a Did the organization have a tax-exempt bond issue with an outstanding principal amount of more than \$100,000 as of the last day of the year, that was issued after December 31, 2002? <i>If "Yes," answer lines 24b through 24d and complete Schedule K. If "No," go to line 25</i>		X
b Did the organization invest any proceeds of tax-exempt bonds beyond a temporary period exception?		
c Did the organization maintain an escrow account other than a refunding escrow at any time during the year to defease any tax-exempt bonds?		
d Did the organization act as an "on behalf of" issuer for bonds outstanding at any time during the year?		
25a <b>Section 501(c)(3) and 501(c)(4) organizations.</b> Did the organization engage in an excess benefit transaction with a disqualified person during the year? <i>If "Yes," complete Schedule L, Part I</i>		X
b Is the organization aware that it engaged in an excess benefit transaction with a disqualified person in a prior year, and that the transaction has not been reported on any of the organization's prior Forms 990 or 990-EZ? <i>If "Yes," complete Schedule L, Part I</i>		X
26 Was a loan to or by a current or former officer, director, trustee, key employee, highly compensated employee, or disqualified person outstanding as of the end of the organization's tax year? <i>If "Yes," complete Schedule L, Part II</i>		X
27 Did the organization provide a grant or other assistance to an officer, director, trustee, key employee, substantial contributor or employee thereof, a grant selection committee member, or to a 35% controlled entity or family member of any of these persons? <i>If "Yes," complete Schedule L, Part III</i>		X
28 Was the organization a party to a business transaction with one of the following parties (see Schedule L, Part IV instructions for applicable filing thresholds, conditions, and exceptions):		
a A current or former officer, director, trustee, or key employee? <i>If "Yes," complete Schedule L, Part IV</i>		X
b A family member of a current or former officer, director, trustee, or key employee? <i>If "Yes," complete Schedule L, Part IV</i>		X
c An entity of which a current or former officer, director, trustee, or key employee (or a family member thereof) was an officer, director, trustee, or direct or indirect owner? <i>If "Yes," complete Schedule L, Part IV</i>		X
29 Did the organization receive more than \$25,000 in non-cash contributions? <i>If "Yes," complete Schedule M</i>		X
30 Did the organization receive contributions of art, historical treasures, or other similar assets, or qualified conservation contributions? <i>If "Yes," complete Schedule M</i>		X
31 Did the organization liquidate, terminate, or dissolve and cease operations? <i>If "Yes," complete Schedule N, Part I</i>		X
32 Did the organization sell, exchange, dispose of, or transfer more than 25% of its net assets? <i>If "Yes," complete Schedule N, Part II</i>		X
33 Did the organization own 100% of an entity disregarded as separate from the organization under Regulations sections 301.7701-2 and 301.7701-3? <i>If "Yes," complete Schedule R, Part I</i>		X
34 Was the organization related to any tax-exempt or taxable entity? <i>If "Yes," complete Schedule R, Parts II, III, IV, and V, line 1</i>		X
35a Did the organization have a controlled entity within the meaning of section 512(b)(13)?		X
b Did the organization receive any payment from or engage in any transaction with a controlled entity within the meaning of section 512(b)(13)? <i>If "Yes," complete Schedule R, Part V, line 2</i>		X
36 <b>Section 501(c)(3) organizations.</b> Did the organization make any transfers to an exempt non-charitable related organization? <i>If "Yes," complete Schedule R, Part V, line 2</i>		X
37 Did the organization conduct more than 5% of its activities through an entity that is not a related organization and that is treated as a partnership for federal income tax purposes? <i>If "Yes," complete Schedule R, Part VI</i>		X
38 Did the organization complete Schedule O and provide explanations in Schedule O for Part VI, lines 11 and 19? <b>Note.</b> All Form 990 filers are required to complete Schedule O	X	

**Part V** Statements Regarding Other IRS Filings and Tax Compliance

Check if Schedule O contains a response to any question in this Part V

		Yes	No
1a	Enter the number reported in Box 3 of Form 1096. Enter -0- if not applicable		
1b	Enter the number of Forms W-2G included in line 1a. Enter -0- if not applicable		
c	Did the organization comply with backup withholding rules for reportable payments to vendors and reportable gaming (gambling) winnings to prize winners?		
2a	Enter the number of employees reported on Form W-3, Transmittal of Wage and Tax Statements, filed for the calendar year ending with or within the year covered by this return		
b	If at least one is reported on line 2a, did the organization file all required federal employment tax returns? <b>Note.</b> If the sum of lines 1a and 2a is greater than 250, you may be required to e-file (see instructions)	X	
3a	Did the organization have unrelated business gross income of \$1,000 or more during the year?		X
b	If "Yes," has it filed a Form 990-T for this year? If "No," provide an explanation in Schedule O		
4a	At any time during the calendar year, did the organization have an interest in, or a signature or other authority over, a financial account in a foreign country (such as a bank account, securities account, or other financial account)?		X
b	If "Yes," enter the name of the foreign country: See instructions for filing requirements for Form TD F 90-22.1, Report of Foreign Bank and Financial Accounts.		
5a	Was the organization a party to a prohibited tax shelter transaction at any time during the tax year?		X
b	Did any taxable party notify the organization that it was or is a party to a prohibited tax shelter transaction?		X
c	If "Yes," to line 5a or 5b, did the organization file Form 8886-T?		
6a	Does the organization have annual gross receipts that are normally greater than \$100,000, and did the organization solicit any contributions that were not tax deductible?		X
b	If "Yes," did the organization include with every solicitation an express statement that such contributions or gifts were not tax deductible?		
7	<b>Organizations that may receive deductible contributions under section 170(c).</b>		
a	Did the organization receive a payment in excess of \$75 made partly as a contribution and partly for goods and services provided to the payor?		X
b	If "Yes," did the organization notify the donor of the value of the goods or services provided?		
c	Did the organization sell, exchange, or otherwise dispose of tangible personal property for which it was required to file Form 8282?		X
d	If "Yes," indicate the number of Forms 8282 filed during the year		
e	Did the organization receive any funds, directly or indirectly, to pay premiums on a personal benefit contract?		X
f	Did the organization, during the year, pay premiums, directly or indirectly, on a personal benefit contract?		X
g	If the organization received a contribution of qualified intellectual property, did the organization file Form 8899 as required?		
h	If the organization received a contribution of cars, boats, airplanes, or other vehicles, did the organization file a Form 1098-C?		
8	<b>Sponsoring organizations maintaining donor advised funds and section 509(a)(3) supporting organizations.</b> Did the supporting organization, or a donor advised fund maintained by a sponsoring organization, have excess business holdings at any time during the year?		
9	<b>Sponsoring organizations maintaining donor advised funds.</b>		
a	Did the organization make any taxable distributions under section 4966?		
b	Did the organization make a distribution to a donor, donor advisor, or related person?		
10	<b>Section 501(c)(7) organizations.</b> Enter.		
a	Initiation fees and capital contributions included on Part VIII, line 12		
b	Gross receipts, included on Form 990, Part VIII, line 12, for public use of club facilities		
11	<b>Section 501(c)(12) organizations.</b> Enter:		
a	Gross income from members or shareholders		
b	Gross income from other sources (Do not net amounts due or paid to other sources against amounts due or received from them.)		
12a	<b>Section 4947(a)(1) non-exempt charitable trusts.</b> Is the organization filing Form 990 in lieu of Form 1041?		
b	If "Yes," enter the amount of tax-exempt interest received or accrued during the year		
13	<b>Section 501(c)(29) qualified nonprofit health insurance issuers.</b>		
a	Is the organization licensed to issue qualified health plans in more than one state? <b>Note.</b> See the instructions for additional information the organization must report on Schedule O.		
b	Enter the amount of reserves the organization is required to maintain by the states in which the organization is licensed to issue qualified health plans		
c	Enter the amount of reserves on hand		
14a	Did the organization receive any payments for indoor tanning services during the tax year?		X
b	If "Yes," has it filed a Form 720 to report these payments? If "No," provide an explanation in Schedule O		

**Part VI Governance, Management, and Disclosure** For each "Yes" response to lines 2 through 7b below, and for a "No" response to line 8a, 8b, or 10b below, describe the circumstances, processes, or changes in Schedule O. See instructions.

Check if Schedule O contains a response to any question in this Part VI

**Section A. Governing Body and Management**

		Yes	No
<b>1a</b>	Enter the number of voting members of the governing body at the end of the tax year If there are material differences in voting rights among members of the governing body, or if the governing body delegated broad authority to an executive committee or similar committee, explain in Schedule O.		
<b>1b</b>	Enter the number of voting members included in line 1a, above, who are independent		
<b>2</b>	Did any officer, director, trustee, or key employee have a family relationship or a business relationship with any other officer, director, trustee, or key employee?		X
<b>3</b>	Did the organization delegate control over management duties customarily performed by or under the direct supervision of officers, directors, or trustees, or key employees to a management company or other person?		X
<b>4</b>	Did the organization make any significant changes to its governing documents since the prior Form 990 was filed?		X
<b>5</b>	Did the organization become aware during the year of a significant diversion of the organization's assets?		X
<b>6</b>	Did the organization have members or stockholders?		X
<b>7a</b>	Did the organization have members, stockholders, or other persons who had the power to elect or appoint one or more members of the governing body?		X
<b>7b</b>	Are any governance decisions of the organization reserved to (or subject to approval by) members, stockholders, or persons other than the governing body?		X
<b>8</b>	Did the organization contemporaneously document the meetings held or written actions undertaken during the year by the following:		
<b>8a</b>	The governing body?	X	
<b>8b</b>	Each committee with authority to act on behalf of the governing body?	X	
<b>9</b>	Is there any officer, director, trustee, or key employee listed in Part VII, Section A, who cannot be reached at the organization's mailing address? If "Yes," provide the names and addresses in Schedule O		X

**Section B. Policies** (This Section B requests information about policies not required by the Internal Revenue Code.)

		Yes	No
<b>10a</b>	Did the organization have local chapters, branches, or affiliates?		X
<b>10b</b>	If "Yes," did the organization have written policies and procedures governing the activities of such chapters, affiliates, and branches to ensure their operations are consistent with the organization's exempt purposes?		
<b>11a</b>	Has the organization provided a complete copy of this Form 990 to all members of its governing body before filing the form?	X	
<b>11b</b>	Describe in Schedule O the process, if any, used by the organization to review this Form 990.		
<b>12a</b>	Did the organization have a written conflict of interest policy? If "No," go to line 13	X	
<b>12b</b>	Were officers, directors, or trustees, and key employees required to disclose annually interests that could give rise to conflicts?	X	
<b>12c</b>	Did the organization regularly and consistently monitor and enforce compliance with the policy? If "Yes," describe in Schedule O how this was done	X	
<b>13</b>	Did the organization have a written whistleblower policy?	X	
<b>14</b>	Did the organization have a written document retention and destruction policy?	X	
<b>15</b>	Did the process for determining compensation of the following persons include a review and approval by independent persons, comparability data, and contemporaneous substantiation of the deliberation and decision?		
<b>15a</b>	The organization's CEO, Executive Director, or top management official	X	
<b>15b</b>	Other officers or key employees of the organization	X	
	If "Yes" to line 15a or 15b, describe the process in Schedule O (see instructions).		
<b>16a</b>	Did the organization invest in, contribute assets to, or participate in a joint venture or similar arrangement with a taxable entity during the year?		X
<b>16b</b>	If "Yes," did the organization follow a written policy or procedure requiring the organization to evaluate its participation in joint venture arrangements under applicable federal tax law, and take steps to safeguard the organization's exempt status with respect to such arrangements?		

**Section C. Disclosure**

- 17** List the states with which a copy of this Form 990 is required to be filed **NJ**
- 18** Section 6104 requires an organization to make its Forms 1023 (or 1024 if applicable), 990, and 990-T (Section 501(c)(3)s only) available for public inspection. Indicate how you made these available. Check all that apply  
 Own website     Another's website     Upon request
- 19** Describe in Schedule O whether (and if so, how), the organization made its governing documents, conflict of interest policy, and financial statements available to the public during the tax year
- 20** State the name, physical address, and telephone number of the person who possesses the books and records of the organization  
**WENDELL KNIGHT - 973-714-7518**  
**151 KNOLLCROFT ROAD, BUILDING 53 ROOM W311, LYONS, NJ 07639**





**Part VIII Statement of Revenue**

				(A) Total revenue	(B) Related or exempt function revenue	(C) Unrelated business revenue	(D) Revenue excluded from tax under sections 512, 513, or 514	
<b>Contributions, Gifts, Grants and Other Similar Amounts</b>	<b>1 a</b> Federated campaigns	<b>1a</b>						
	<b>b</b> Membership dues	<b>1b</b>						
	<b>c</b> Fundraising events	<b>1c</b>						
	<b>d</b> Related organizations	<b>1d</b>						
	<b>e</b> Government grants (contributions)	<b>1e</b>	75,887.					
	<b>f</b> All other contributions, gifts, grants, and similar amounts not included above	<b>1f</b>						
	<b>g</b> Noncash contributions included in lines 1a-1f \$							
	<b>h Total.</b> Add lines 1a-1f			75,887.				
<b>Program Service Revenue</b>	<b>2 a</b> <u>INTERNSHIPS &amp; EMPLOYME</u>	<b>Business Code</b>	900099	149,595.	149,595.			
	<b>b</b>							
	<b>c</b>							
	<b>d</b>							
	<b>e</b>							
	<b>f</b> All other program service revenue							
	<b>g Total.</b> Add lines 2a-2f			149,595.				
<b>Other Revenue</b>	<b>3</b> Investment income (including dividends, interest, and other similar amounts)			20.			20.	
	<b>4</b> Income from investment of tax-exempt bond proceeds							
	<b>5</b> Royalties							
	<b>6 a</b> Gross rents	(i) Real	(ii) Personal					
		<b>b</b> Less: rental expenses						
		<b>c</b> Rental income or (loss)						
		<b>d</b> Net rental income or (loss)						
	<b>7 a</b> Gross amount from sales of assets other than inventory	(i) Securities	(ii) Other					
		<b>b</b> Less: cost or other basis and sales expenses						
		<b>c</b> Gain or (loss)						
		<b>d</b> Net gain or (loss)						
	<b>8 a</b> Gross income from fundraising events (not including \$ _____ of contributions reported on line 1c) See Part IV, line 18	<b>a</b>						
		<b>b</b> Less: direct expenses	<b>b</b>					
		<b>c</b> Net income or (loss) from fundraising events						
	<b>9 a</b> Gross income from gaming activities. See Part IV, line 19	<b>a</b>						
<b>b</b> Less: direct expenses		<b>b</b>						
<b>c</b> Net income or (loss) from gaming activities								
<b>10 a</b> Gross sales of inventory, less returns and allowances	<b>a</b>							
	<b>b</b> Less: cost of goods sold	<b>b</b>						
	<b>c</b> Net income or (loss) from sales of inventory							
<b>Miscellaneous Revenue</b>			<b>Business Code</b>					
<b>11 a</b>								
	<b>b</b>							
	<b>c</b>							
	<b>d</b> All other revenue							
	<b>e Total.</b> Add lines 11a-11d							
<b>12 Total revenue.</b> See instructions.				225,502.	149,595.	0.	20.	

**Part IX Statement of Functional Expenses**

Section 501(c)(3) and 501(c)(4) organizations must complete all columns. All other organizations must complete column (A) but are not required to complete columns (B), (C), and (D).

Check if Schedule O contains a response to any question in this Part IX

Do not include amounts reported on lines 6b, 7b, 8b, 9b, and 10b of Part VIII.	(A) Total expenses	(B) Program service expenses	(C) Management and general expenses	(D) Fundraising expenses
1 Grants and other assistance to governments and organizations in the United States. See Part IV, line 21				
2 Grants and other assistance to individuals in the United States. See Part IV, line 22				
3 Grants and other assistance to governments, organizations, and individuals outside the United States. See Part IV, lines 15 and 16				
4 Benefits paid to or for members				
5 Compensation of current officers, directors, trustees, and key employees	65,000.	26,000.	39,000.	
6 Compensation not included above, to disqualified persons (as defined under section 4958(f)(1)) and persons described in section 4958(c)(3)(B)				
7 Other salaries and wages				
8 Pension plan accruals and contributions (include section 401(k) and section 403(b) employer contributions)				
9 Other employee benefits				
10 Payroll taxes	6,317.	3,790.	2,527.	
11 Fees for services (non-employees):				
a Management				
b Legal				
c Accounting				
d Lobbying				
e Professional fundraising services. See Part IV, line 17				
f Investment management fees				
g Other	1,361.	817.	544.	
12 Advertising and promotion	756.	756.		
13 Office expenses	5,430.	2,166.	3,264.	
14 Information technology				
15 Royalties				
16 Occupancy	7,410.	3,705.	3,705.	
17 Travel	868.	434.	434.	
18 Payments of travel or entertainment expenses for any federal, state, or local public officials				
19 Conferences, conventions, and meetings	2,840.	2,705.	135.	
20 Interest				
21 Payments to affiliates				
22 Depreciation, depletion, and amortization	65.	65.		
23 Insurance	2,335.		2,335.	
24 Other expenses. Itemize expenses not covered above. (List miscellaneous expenses in line 24e. If line 24e amount exceeds 10% of line 25, column (A) amount, list line 24e expenses on Schedule O.)				
a <b>FOOD SUPPLIES</b>	61,166.	61,166.		
b <b>GOLF CLINIC SUPPLIES</b>	38,198.	38,198.		
c <b>PLANT SUPPLIES</b>	16,801.	16,801.		
d <b>REPAIRS &amp; MAINTENANCE</b>	10,183.	10,183.		
e All other expenses	9,203.	6,036.	3,167.	
25 <b>Total functional expenses.</b> Add lines 1 through 24e	227,933.	172,822.	55,111.	0.
26 <b>Joint costs.</b> Complete this line only if the organization reported in column (B) joint costs from a combined educational campaign and fundraising solicitation.				

Check here  if following SOP 98-2 (ASC 958-720)

**Part X Balance Sheet**

		(A) Beginning of year		(B) End of year	
<b>Assets</b>	1	Cash - non-interest-bearing	30,286.	1	8,195.
	2	Savings and temporary cash investments		2	
	3	Pledges and grants receivable, net		3	
	4	Accounts receivable, net		4	
	5	Receivables from current and former officers, directors, trustees, key employees, and highest compensated employees. Complete Part II of Schedule L		5	
	6	Receivables from other disqualified persons (as defined under section 4958(f)(1)), persons described in section 4958(c)(3)(B), and contributing employers and sponsoring organizations of section 501(c)(9) voluntary employees' beneficiary organizations (see instructions)		6	
	7	Notes and loans receivable, net		7	
	8	Inventories for sale or use		8	
	9	Prepaid expenses and deferred charges		9	
	10a	Land, buildings, and equipment: cost or other basis. Complete Part VI of Schedule D	10a 7,750.		
	b	Less: accumulated depreciation	10b 65.	10c 0.	7,685.
	11	Investments - publicly traded securities		11	
	12	Investments - other securities. See Part IV, line 11		12	
	13	Investments - program-related. See Part IV, line 11		13	
	14	Intangible assets		14	
	15	Other assets. See Part IV, line 11	2,336.	15	0.
16	<b>Total assets.</b> Add lines 1 through 15 (must equal line 34)	32,622.	16	15,880.	
<b>Liabilities</b>	17	Accounts payable and accrued expenses		17	
	18	Grants payable		18	
	19	Deferred revenue		19	
	20	Tax-exempt bond liabilities		20	
	21	Escrow or custodial account liability. Complete Part IV of Schedule D		21	
	22	Payables to current and former officers, directors, trustees, key employees, highest compensated employees, and disqualified persons. Complete Part II of Schedule L		22	
	23	Secured mortgages and notes payable to unrelated third parties		23	
	24	Unsecured notes and loans payable to unrelated third parties		24	
	25	Other liabilities (including federal income tax, payables to related third parties, and other liabilities not included on lines 17-24). Complete Part X of Schedule D	17,080.	25	2,769.
	26	<b>Total liabilities.</b> Add lines 17 through 25	17,080.	26	2,769.
<b>Net Assets or Fund Balances</b>	Organizations that follow SFAS 117, check here <input checked="" type="checkbox"/> and complete lines 27 through 29, and lines 33 and 34.				
	27	Unrestricted net assets		27	13,111.
	28	Temporarily restricted net assets		28	
	29	Permanently restricted net assets		29	
	Organizations that do not follow SFAS 117, check here <input type="checkbox"/> and complete lines 30 through 34.				
	30	Capital stock or trust principal, or current funds		30	
	31	Paid-in or capital surplus, or land, building, or equipment fund		31	
	32	Retained earnings, endowment, accumulated income, or other funds		32	
33	<b>Total net assets or fund balances</b>	15,542.	33	13,111.	
34	<b>Total liabilities and net assets/fund balances</b>	32,622.	34	15,880.	

**Part XI Reconciliation of Net Assets**

Check if Schedule O contains a response to any question in this Part XI

1	Total revenue (must equal Part VIII, column (A), line 12)	1	225,502.
2	Total expenses (must equal Part IX, column (A), line 25)	2	227,933.
3	Revenue less expenses. Subtract line 2 from line 1	3	<2,431.>
4	Net assets or fund balances at beginning of year (must equal Part X, line 33, column (A))	4	15,542.
5	Other changes in net assets or fund balances (explain in Schedule O)	5	0.
6	Net assets or fund balances at end of year. Combine lines 3, 4, and 5 (must equal Part X, line 33, column (B))	6	13,111.

**Part XII Financial Statements and Reporting**

Check if Schedule O contains a response to any question in this Part XII

- 1 Accounting method used to prepare the Form 990:  Cash  Accrual  Other \_\_\_\_\_  
 If the organization changed its method of accounting from a prior year or checked "Other," explain in Schedule O.
- 2a Were the organization's financial statements compiled or reviewed by an independent accountant?
- b Were the organization's financial statements audited by an independent accountant?
- c If "Yes" to line 2a or 2b, does the organization have a committee that assumes responsibility for oversight of the audit, review, or compilation of its financial statements and selection of an independent accountant?  
 If the organization changed either its oversight process or selection process during the tax year, explain in Schedule O.
- d If "Yes" to line 2a or 2b, check a box below to indicate whether the financial statements for the year were issued on a separate basis, consolidated basis, or both.  
 Separate basis  Consolidated basis  Both consolidated and separate basis
- 3a As a result of a federal award, was the organization required to undergo an audit or audits as set forth in the Single Audit Act and OMB Circular A-133?
- b If "Yes," did the organization undergo the required audit or audits? If the organization did not undergo the required audit or audits, explain why in Schedule O and describe any steps taken to undergo such audits

	Yes	No
2a		X
2b		X
2c		
3a		X
3b		

Form 990 (2011)

**SCHEDULE A**  
**(Form 990 or 990-EZ)**

Department of the Treasury  
Internal Revenue Service

**Public Charity Status and Public Support**

Complete if the organization is a section 501(c)(3) organization or a section 4947(a)(1) nonexempt charitable trust.

▶ Attach to Form 990 or Form 990-EZ. ▶ See separate instructions.

OMB No 1545-0047

**2011**

Open to Public Inspection

Name of the organization **MTI INTEGRATED BUSINESS DEVELOPMENT INC** Employer identification number **27-1732693**

**Part I Reason for Public Charity Status** (All organizations must complete this part ) See instructions

The organization is not a private foundation because it is. (For lines 1 through 11, check only one box )

- 1  A church, convention of churches, or association of churches described in section 170(b)(1)(A)(i).
- 2  A school described in section 170(b)(1)(A)(ii). (Attach Schedule E.)
- 3  A hospital or a cooperative hospital service organization described in section 170(b)(1)(A)(iii).
- 4  A medical research organization operated in conjunction with a hospital described in section 170(b)(1)(A)(iii). Enter the hospital's name, city, and state.
- 5  An organization operated for the benefit of a college or university owned or operated by a governmental unit described in section 170(b)(1)(A)(iv). (Complete Part II.)
- 6  A federal, state, or local government or governmental unit described in section 170(b)(1)(A)(v).
- 7  An organization that normally receives a substantial part of its support from a governmental unit or from the general public described in section 170(b)(1)(A)(vi). (Complete Part II )
- 8  A community trust described in section 170(b)(1)(A)(vi). (Complete Part II )
- 9  An organization that normally receives: (1) more than 33 1/3% of its support from contributions, membership fees, and gross receipts from activities related to its exempt functions - subject to certain exceptions, and (2) no more than 33 1/3% of its support from gross investment income and unrelated business taxable income (less section 511 tax) from businesses acquired by the organization after June 30, 1975. See section 509(a)(2). (Complete Part III.)
- 10  An organization organized and operated exclusively to test for public safety. See section 509(a)(4).
- 11  An organization organized and operated exclusively for the benefit of, to perform the functions of, or to carry out the purposes of one or more publicly supported organizations described in section 509(a)(1) or section 509(a)(2). See section 509(a)(3). Check the box that describes the type of supporting organization and complete lines 11e through 11h.
  - a  Type I
  - b  Type II
  - c  Type III - Functionally integrated
  - d  Type III - Other
- e  By checking this box, I certify that the organization is not controlled directly or indirectly by one or more disqualified persons other than foundation managers and other than one or more publicly supported organizations described in section 509(a)(1) or section 509(a)(2).
- f If the organization received a written determination from the IRS that it is a Type I, Type II, or Type III supporting organization, check this box
- g Since August 17, 2006, has the organization accepted any gift or contribution from any of the following persons?
 

	Yes	No
11g(i)		
11g(ii)		
11g(iii)		

  - (i) A person who directly or indirectly controls, either alone or together with persons described in (ii) and (iii) below, the governing body of the supported organization?
  - (ii) A family member of a person described in (i) above?
  - (iii) A 35% controlled entity of a person described in (i) or (ii) above?
- h Provide the following information about the supported organization(s)

(i) Name of supported organization	(ii) EIN	(iii) Type of organization (described on lines 1-9 above or IRC section (see instructions))	(iv) Is the organization in col. (i) listed in your governing document?		(v) Did you notify the organization in col. (i) of your support?		(vi) Is the organization in col. (i) organized in the U.S.?		(vii) Amount of support
			Yes	No	Yes	No	Yes	No	
<b>Total</b>									

LHA For Paperwork Reduction Act Notice, see the Instructions for Form 990 or 990-EZ. Schedule A (Form 990 or 990-EZ) 2011

**Part II Support Schedule for Organizations Described in Sections 170(b)(1)(A)(iv) and 170(b)(1)(A)(vi)**

(Complete only if you checked the box on line 5, 7, or 8 of Part I or if the organization failed to qualify under Part III. If the organization fails to qualify under the tests listed below, please complete Part III.)

**Section A. Public Support**

Calendar year (or fiscal year beginning in) ▶	(a) 2007	(b) 2008	(c) 2009	(d) 2010	(e) 2011	(f) Total
<b>1</b> Gifts, grants, contributions, and membership fees received. (Do not include any "unusual grants.")						
<b>2</b> Tax revenues levied for the organization's benefit and either paid to or expended on its behalf						
<b>3</b> The value of services or facilities furnished by a governmental unit to the organization without charge						
<b>4 Total.</b> Add lines 1 through 3						
<b>5</b> The portion of total contributions by each person (other than a governmental unit or publicly supported organization) included on line 1 that exceeds 2% of the amount shown on line 11, column (f)						
<b>6 Public support.</b> Subtract line 5 from line 4						

**Section B. Total Support**

Calendar year (or fiscal year beginning in) ▶	(a) 2007	(b) 2008	(c) 2009	(d) 2010	(e) 2011	(f) Total
<b>7</b> Amounts from line 4						
<b>8</b> Gross income from interest, dividends, payments received on securities loans, rents, royalties and income from similar sources						
<b>9</b> Net income from unrelated business activities, whether or not the business is regularly carried on						
<b>10</b> Other income. Do not include gain or loss from the sale of capital assets (Explain in Part IV.)						
<b>11 Total support.</b> Add lines 7 through 10						
<b>12</b> Gross receipts from related activities, etc (see instructions)					<b>12</b>	
<b>13 First five years.</b> If the Form 990 is for the organization's first, second, third, fourth, or fifth tax year as a section 501(c)(3) organization, check this box and stop here <input type="checkbox"/>						

**Section C. Computation of Public Support Percentage**

<b>14</b> Public support percentage for 2011 (line 6, column (f) divided by line 11, column (f))	<b>14</b>	%
<b>15</b> Public support percentage from 2010 Schedule A, Part II, line 14	<b>15</b>	%
<b>16a 33 1/3% support test - 2011.</b> If the organization did not check the box on line 13, and line 14 is 33 1/3% or more, check this box and stop here. The organization qualifies as a publicly supported organization <input type="checkbox"/>		
<b>b 33 1/3% support test - 2010.</b> If the organization did not check a box on line 13 or 16a, and line 15 is 33 1/3% or more, check this box and stop here. The organization qualifies as a publicly supported organization <input type="checkbox"/>		
<b>17a 10% -facts-and-circumstances test - 2011.</b> If the organization did not check a box on line 13, 16a, or 16b, and line 14 is 10% or more, and if the organization meets the "facts-and-circumstances" test, check this box and stop here. Explain in Part IV how the organization meets the "facts-and-circumstances" test The organization qualifies as a publicly supported organization <input type="checkbox"/>		
<b>b 10% -facts-and-circumstances test - 2010.</b> If the organization did not check a box on line 13, 16a, 16b, or 17a, and line 15 is 10% or more, and if the organization meets the "facts-and-circumstances" test, check this box and stop here. Explain in Part IV how the organization meets the "facts-and-circumstances" test. The organization qualifies as a publicly supported organization <input type="checkbox"/>		
<b>18 Private foundation.</b> If the organization did not check a box on line 13, 16a, 16b, 17a, or 17b, check this box and see instructions <input type="checkbox"/>		

**Part III Support Schedule for Organizations Described in Section 509(a)(2)**

(Complete only if you checked the box on line 9 of Part I or if the organization failed to qualify under Part II. If the organization fails to qualify under the tests listed below, please complete Part II.)

**Section A. Public Support**

Calendar year (or fiscal year beginning in) ▶	(a) 2007	(b) 2008	(c) 2009	(d) 2010	(e) 2011	(f) Total
<b>1</b> Gifts, grants, contributions, and membership fees received (Do not include any "unusual grants.")				79,717.	75,887.	155,604.
<b>2</b> Gross receipts from admissions, merchandise sold or services performed, or facilities furnished in any activity that is related to the organization's tax-exempt purpose				107,287.	149,595.	256,882.
<b>3</b> Gross receipts from activities that are not an unrelated trade or business under section 513						
<b>4</b> Tax revenues levied for the organization's benefit and either paid to or expended on its behalf						
<b>5</b> The value of services or facilities furnished by a governmental unit to the organization without charge						
<b>6 Total.</b> Add lines 1 through 5				187,004.	225,482.	412,486.
<b>7a</b> Amounts included on lines 1, 2, and 3 received from disqualified persons						0.
<b>b</b> Amounts included on lines 2 and 3 received from other than disqualified persons that exceed the greater of \$5,000 or 1% of the amount on line 13 for the year						0.
<b>c</b> Add lines 7a and 7b						0.
<b>8 Public support</b> (Subtract line 7c from line 6)						412,486.

**Section B. Total Support**

Calendar year (or fiscal year beginning in) ▶	(a) 2007	(b) 2008	(c) 2009	(d) 2010	(e) 2011	(f) Total
<b>9</b> Amounts from line 6				187,004.	225,482.	412,486.
<b>10a</b> Gross income from interest, dividends, payments received on securities loans, rents, royalties and income from similar sources				47.	20.	67.
<b>b</b> Unrelated business taxable income (less section 511 taxes) from businesses acquired after June 30, 1975						
<b>c</b> Add lines 10a and 10b				47.	20.	67.
<b>11</b> Net income from unrelated business activities not included in line 10b, whether or not the business is regularly carried on						
<b>12</b> Other income. Do not include gain or loss from the sale of capital assets (Explain in Part IV.)						
<b>13 Total support</b> (Add lines 9, 10c, 11, and 12)				187,051.	225,502.	412,553.

**14 First five years.** If the Form 990 is for the organization's first, second, third, fourth, or fifth tax year as a section 501(c)(3) organization, check this box and **stop here**

**Section C. Computation of Public Support Percentage**

<b>15</b> Public support percentage for 2011 (line 8, column (f) divided by line 13, column (f))	15	%
<b>16</b> Public support percentage from 2010 Schedule A, Part III, line 15	16	%

**Section D. Computation of Investment Income Percentage**

<b>17</b> Investment income percentage for 2011 (line 10c, column (f) divided by line 13, column (f))	17	%
<b>18</b> Investment income percentage from 2010 Schedule A, Part III, line 17	18	%

**19a 33 1/3% support tests - 2011.** If the organization did not check the box on line 14, and line 15 is more than 33 1/3%, and line 17 is not more than 33 1/3%, check this box and **stop here**. The organization qualifies as a publicly supported organization

**b 33 1/3% support tests - 2010.** If the organization did not check a box on line 14 or line 19a, and line 16 is more than 33 1/3%, and line 18 is not more than 33 1/3%, check this box and **stop here**. The organization qualifies as a publicly supported organization

**20 Private foundation.** If the organization did not check a box on line 14, 19a, or 19b, check this box and see instructions

**SCHEDULE D**  
(Form 990)

Department of the Treasury  
Internal Revenue Service

**Supplemental Financial Statements**

▶ Complete if the organization answered "Yes," to Form 990, Part IV, line 6, 7, 8, 9, 10, 11a, 11b, 11c, 11d, 11e, 11f, 12a, or 12b.  
▶ Attach to Form 990. ▶ See separate instructions.

OMB No 1545-0047

**2011**

Open to Public Inspection

Name of the organization **MTI INTEGRATED BUSINESS DEVELOPMENT INC** Employer identification number **27-1732693**

**Part I Organizations Maintaining Donor Advised Funds or Other Similar Funds or Accounts.** Complete if the organization answered "Yes" to Form 990, Part IV, line 6.

	(a) Donor advised funds	(b) Funds and other accounts
1 Total number at end of year		
2 Aggregate contributions to (during year)		
3 Aggregate grants from (during year)		
4 Aggregate value at end of year		
5 Did the organization inform all donors and donor advisors in writing that the assets held in donor advised funds are the organization's property, subject to the organization's exclusive legal control?		<input type="checkbox"/> Yes <input type="checkbox"/> No
6 Did the organization inform all grantees, donors, and donor advisors in writing that grant funds can be used only for charitable purposes and not for the benefit of the donor or donor advisor, or for any other purpose conferring impermissible private benefit?		<input type="checkbox"/> Yes <input type="checkbox"/> No

**Part II Conservation Easements.** Complete if the organization answered "Yes" to Form 990, Part IV, line 7.

- 1 Purpose(s) of conservation easements held by the organization (check all that apply)
- Preservation of land for public use (e.g., recreation or education)  Preservation of an historically important land area
- Protection of natural habitat  Preservation of a certified historic structure
- Preservation of open space
- 2 Complete lines 2a through 2d if the organization held a qualified conservation contribution in the form of a conservation easement on the last day of the tax year.
- |  | Held at the End of the Tax Year |
|--|---------------------------------|
| a Total number of conservation easements   |                                 |
| b Total acreage restricted by conservation easements   |                                 |
| c Number of conservation easements on a certified historic structure included in (a)   |                                 |
| d Number of conservation easements included in (c) acquired after 8/17/06, and not on a historic structure listed in the National Register |                                 |
- 3 Number of conservation easements modified, transferred, released, extinguished, or terminated by the organization during the tax year ▶ \_\_\_\_\_
- 4 Number of states where property subject to conservation easement is located ▶ \_\_\_\_\_
- 5 Does the organization have a written policy regarding the periodic monitoring, inspection, handling of violations, and enforcement of the conservation easements it holds?  Yes  No
- 6 Staff and volunteer hours devoted to monitoring, inspecting, and enforcing conservation easements during the year ▶ \_\_\_\_\_
- 7 Amount of expenses incurred in monitoring, inspecting, and enforcing conservation easements during the year ▶ \$ \_\_\_\_\_
- 8 Does each conservation easement reported on line 2(d) above satisfy the requirements of section 170(h)(4)(B)(i) and section 170(h)(4)(B)(ii)?  Yes  No
- 9 In Part XIV, describe how the organization reports conservation easements in its revenue and expense statement, and balance sheet, and include, if applicable, the text of the footnote to the organization's financial statements that describes the organization's accounting for conservation easements.

**Part III Organizations Maintaining Collections of Art, Historical Treasures, or Other Similar Assets.**

Complete if the organization answered "Yes" to Form 990, Part IV, line 8

- 1a If the organization elected, as permitted under SFAS 116 (ASC 958), not to report in its revenue statement and balance sheet works of art, historical treasures, or other similar assets held for public exhibition, education, or research in furtherance of public service, provide, in Part XIV, the text of the footnote to its financial statements that describes these items.
- b If the organization elected, as permitted under SFAS 116 (ASC 958), to report in its revenue statement and balance sheet works of art, historical treasures, or other similar assets held for public exhibition, education, or research in furtherance of public service, provide the following amounts relating to these items.
- (i) Revenues included in Form 990, Part VIII, line 1 ▶ \$ \_\_\_\_\_
- (ii) Assets included in Form 990, Part X ▶ \$ \_\_\_\_\_
- 2 If the organization received or held works of art, historical treasures, or other similar assets for financial gain, provide the following amounts required to be reported under SFAS 116 (ASC 958) relating to these items
- a Revenues included in Form 990, Part VIII, line 1 ▶ \$ \_\_\_\_\_
- b Assets included in Form 990, Part X ▶ \$ \_\_\_\_\_

**Part III Organizations Maintaining Collections of Art, Historical Treasures, or Other Similar Assets** (continued)

- 3 Using the organization's acquisition, accession, and other records, check any of the following that are a significant use of its collection items (check all that apply):
- a  Public exhibition
  - b  Scholarly research
  - c  Preservation for future generations
  - d  Loan or exchange programs
  - e  Other \_\_\_\_\_
- 4 Provide a description of the organization's collections and explain how they further the organization's exempt purpose in Part XIV.
- 5 During the year, did the organization solicit or receive donations of art, historical treasures, or other similar assets to be sold to raise funds rather than to be maintained as part of the organization's collection?  Yes  No

**Part IV Escrow and Custodial Arrangements.** Complete if the organization answered "Yes" to Form 990, Part IV, line 9, or reported an amount on Form 990, Part X, line 21.

- 1a Is the organization an agent, trustee, custodian or other intermediary for contributions or other assets not included on Form 990, Part X?  Yes  No
- b If "Yes," explain the arrangement in Part XIV and complete the following table:
- |                                 | Amount |
|---------------------------------|--------|
| c Beginning balance             | 1c     |
| d Additions during the year     | 1d     |
| e Distributions during the year | 1e     |
| f Ending balance                | 1f     |
- 2a Did the organization include an amount on Form 990, Part X, line 21?  Yes  No
- b If "Yes," explain the arrangement in Part XIV.

**Part V Endowment Funds.** Complete if the organization answered "Yes" to Form 990, Part IV, line 10.

	(a) Current year	(b) Prior year	(c) Two years back	(d) Three years back	(e) Four years back
1a Beginning of year balance					
b Contributions					
c Net investment earnings, gains, and losses					
d Grants or scholarships					
e Other expenditures for facilities and programs					
f Administrative expenses					
g End of year balance					

- 2 Provide the estimated percentage of the current year end balance (line 1g, column (a)) held as:
- a Board designated or quasi-endowment ▶ \_\_\_\_\_ %
  - b Permanent endowment ▶ \_\_\_\_\_ %
  - c Temporarily restricted endowment ▶ \_\_\_\_\_ %
- The percentages in lines 2a, 2b, and 2c should equal 100%.
- 3a Are there endowment funds not in the possession of the organization that are held and administered for the organization by:
- |   | Yes    | No |
|---|--------|----|
| (i) unrelated organizations   | 3a(i)  |    |
| (ii) related organizations  | 3a(ii) |    |
| b If "Yes" to 3a(ii), are the related organizations listed as required on Schedule R? | 3b     |    |
- 4 Describe in Part XIV the intended uses of the organization's endowment funds.

**Part VI Land, Buildings, and Equipment.** See Form 990, Part X, line 10

Description of property	(a) Cost or other basis (investment)	(b) Cost or other basis (other)	(c) Accumulated depreciation	(d) Book value
1a Land				
b Buildings				
c Leasehold improvements				
d Equipment		7,750.	65.	7,685.
e Other				
<b>Total.</b> Add lines 1a through 1e. (Column (d) must equal Form 990, Part X, column (B), line 10(c))				<b>7,685.</b>

**Part VII Investments - Other Securities.** See Form 990, Part X, line 12.

(a) Description of security or category (including name of security)	(b) Book value	(c) Method of valuation: Cost or end-of-year market value
(1) Financial derivatives		
(2) Closely-held equity interests		
(3) Other		
(A)		
(B)		
(C)		
(D)		
(E)		
(F)		
(G)		
(H)		
(I)		
<b>Total.</b> (Col (b) must equal Form 990, Part X, col (B) line 12.)		

**Part VIII Investments - Program Related.** See Form 990, Part X, line 13.

(a) Description of investment type	(b) Book value	(c) Method of valuation: Cost or end-of-year market value
(1)		
(2)		
(3)		
(4)		
(5)		
(6)		
(7)		
(8)		
(9)		
(10)		
<b>Total.</b> (Col (b) must equal Form 990, Part X, col (B) line 13.)		

**Part IX Other Assets.** See Form 990, Part X, line 15.

(a) Description	(b) Book value
(1)	
(2)	
(3)	
(4)	
(5)	
(6)	
(7)	
(8)	
(9)	
(10)	
<b>Total.</b> (Column (b) must equal Form 990, Part X, col (B) line 15)	

**Part X Other Liabilities.** See Form 990, Part X, line 25.

1. (a) Description of liability	(b) Book value
(1) Federal income taxes	
(2) <b>ACCRUED EXPENSES</b>	<b>2,769.</b>
(3)	
(4)	
(5)	
(6)	
(7)	
(8)	
(9)	
(10)	
(11)	
<b>Total.</b> (Column (b) must equal Form 990, Part X, col (B) line 25)	<b>2,769.</b>

FIN 48 (ASC 740) Footnote In Part XIV, provide the text of the footnote to the organization's financial statements that reports the organization's liability for uncertain tax positions under FIN 48 (ASC 740)



**SCHEDULE O**  
(Form 990 or 990-EZ)

Department of the Treasury  
Internal Revenue Service

**Supplemental Information to Form 990 or 990-EZ**

Complete to provide information for responses to specific questions on  
Form 990 or 990-EZ or to provide any additional information.  
▶ Attach to Form 990 or 990-EZ.

OMB No. 1545-0047

**2011**

Open to Public  
Inspection

Name of the organization

MTI INTEGRATED BUSINESS DEVELOPMENT INC

Employer identification number

27-1732693

FORM 990, PART I, LINE 1, DESCRIPTION OF ORGANIZATION MISSION:

EMPLOYMENT OPPORTUNITIES FOR VETERANS WITH BARRIERS.

FORM 990, PART VI, SECTION B, LINE 11: A DRAFT OF FORM 990 IS REVIEWED BY  
THE EXECUTIVE DIRECTOR THEN ELECTRONICALLY DISTRIBUTED AND MADE AVAILABLE  
TO BE REVIEWED BY THE BOARD PRIOR TO BEING FILED WITH THE INTERNAL REVENUE  
SERVICE.

FORM 990, PART VI, SECTION B, LINE 12C: DURING THE BOARD OF DIRECTORS  
ANNUAL MEETING, THE CONFLICT OF INTEREST POLICY IS DISCUSSED TO ENSURE THAT  
ALL MEMBERS ARE IN COMPLIANCE. THE CHIEF EXECUTIVE OFFICER/PRESIDENT IS  
INFORMED OF ANY EMPLOYMENT INTEREST BEYOND HIS OR HER ROLE WITH THE  
ORGANIZATION AND MUST BE APPROVED PRIOR TO ACCEPTING ANY WORK.

FORM 990, PART VI, SECTION B, LINE 15: ANNUALLY THE BOARD OF DIRECTORS  
REVIEW THE COMPENSATION OF THE EXECUTIVE DIRECTOR AND TOP MANAGEMENT BY  
CONSIDERING COMPENSATION PAID BY COMPARABLE ORGANIZATIONS FOR A SIMILAR  
POSITION.

FORM 990, PART VI, SECTION C, LINE 19: THE GOVERNING DOCUMENTS, CONFLICT  
OF INTEREST POLICY AND FINANCIAL STATEMENTS ARE ALWAYS AVAILABLE TO THE  
PUBLIC AT THE ORGANIZATION'S OFFICE OR BY REQUEST.



## About Us

### Our Mission

Our mission is to provide internships and opportunities for Veterans with barriers to employment

### Our History

MTI of New York State originally was founded in 1993 providing residential services to individuals who had been hospitalized in a psychiatric center for many years. Due to the community's housing provider's reluctance to house this population, MTI was born. During its history, MTI grew from a residential service provider to, including in its portfolio, social purpose business development. In order to assist the men and women with barriers to employment and housing, MTI developed social purpose businesses such as janitorial, landscaping, catering, housekeeping services and convenient stores.



In early 2010, MTI expanded its social purpose business development initiative to the Veteran Affairs New Jersey Health Care System (VANJHCS) in Lyons, New Jersey. MTI Integrated Business Development Inc (MTI IBD) New Jersey creates valuable internships in three (3) revenue generating businesses that cater to the public. Our job coaches utilized structured intervention strategies to help the intern perform job task and interpersonal skills necessary to make choices regarding school or employment.



### Our Purpose

MTI assists individuals in identifying their employable strengths and interests, as well as possible supports they may need in order to successfully plan their individual career path. MTI helps make career development intentional for its participants. Employment assessment and skill acquisition are critical to successful employment. All of our work is Veteran centered.



MTI is strategically located on VANJHCS campus in Lyons, New Jersey, and is a Not for Profit Corporation.



## The Foxhole Café

Opening its doors in December 2005, The Foxhole Cafe, located on the VA Campus in Lyons, New Jersey has brought a little bit of "home cooking" to the VA community. While operating as a competitive food service to the residents and staff of the VA, The Foxhole Cafe has set about the task of furthering the MTI's mission to provide employment internship opportunities for homeless Veterans with barriers as food servers, cooks and cashiers. This business unit primarily focuses on the operational aspects of The Foxhole Cafe, defining The Foxhole Cafe as two distinct but interrelated functional operational units, one being the catering/cafe business and the other being the employment internship component.

With an appealing product, both in terms of its mission and its fare, The Foxhole Cafe certainly has an added advantage over its competitors in the community. Its mission of providing a work readiness environment to previously homeless Veterans with barriers, certainly sets it apart from any other competitive eatery in the area.

The Foxhole Cafe has enjoyed favorable reviews for both its food and its mission. Our Cafe provides its customers with wholesome, hearty meals, friendly customer service, pleasant atmosphere, while its interns learn on-the-job skills. Primarily drawing customers from residential services and staff on campus, To support its favorable status, The Foxhole Cafe is proud to have been asked to cater events from various Senators, Congressmen and most recently the Secretary of the Veteran Administration.

[About Us](#)

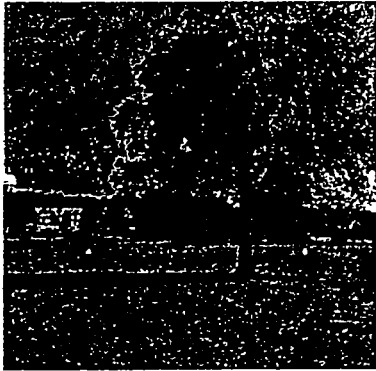
[The Foxhole Cafe](#)

[Golf Driving Range](#)

[The Greenhouse](#)

[Asset Mangement](#)

[Contact Us](#)



## Golf Driving Range

The Golf Driving Range is a full service natural grass golf facility. Set on twelve (12) acres of beautifully manicured property featuring a forty-six thousand (46,000) square foot golf tee line, on-site PGA professional, kid's summer golf clinics and a full service golf pro shop.

Veterans are assigned to an appropriate position at the range and receive on-site internship work development. This phase of the internship work program includes basic skills building such as turf management and grass cutting and may lead into more complex positions such as cashier, golf pro shop assistant and management. The intern is encouraged to move on to competitive employment only when fully emotionally, psychologically, and socially ready to do so.

[About Us](#)

[The Foxhole Cafe](#)

[Golf Driving Range](#)

[The Greenhouse](#)

[Asset Mangement](#)

[Contact Us](#)



## The Greenhouse

The Greenhouse is located on the west sector of the Lyons VA Campus in Bernard s Township NJ Our operation is 100% retail and we service customers from Staten Island, Connecticut and New York in addition to our loyal local community supporters Our growing seasons and swift retail market offer incredible internship opportunities and valuable work experience for Veterans Some of our products include

### Bedding Plants

including annual flower and vegetable transplants for residential and commercial landscapes are one of the largest and most successful crops Bedding plants continue to offer the most sales and our increase in hanging plants and herbs attract excited customers from all around

### Garden Mums

have become the primary summer crop for our greenhouse In the last three (3) years, mum production has increased from one hundred (100) to three thousand five hundred (3 500) plants The market seems saturated for high priced mums but our product consistently sells out due to careful market pricing

### Potted Flowering Plants

are bountiful and our greenhouse manager and crew have become quite efficient in poinsetta production Poinsettias are moderately easy to grow, but require constant attention Poinsettias are the largest crop, potted chrysanthemums, azaleas cyclamen gloxinias tulips "Vicks" plants, etc are in the development of future crops

2011 DEPRECIATION AND AMORTIZATION REPORT  
FORM 990 PAGE 10

990

Asset No	Description	Date Acquired	Method	Life	Line No	Unadjusted Cost Or Basis	Bus % Excl	Reduction In Basis	Basis For Depreciation	Accumulated Depreciation	Current Sec 179	Current Year Deduction
	MACHINERY & EQUIPMENT											
	EQUIPMENT	12/14/11	SL	5.00	16	7,750.			7,750.			65.
	* 990 PAGE 10 TOTAL											
	MACHINERY & EQUIPM					7,750.		0.	7,750.	0.	0.	65.
	* 990 PAGE 10 TOTAL											
	* GRAND TOTAL 990											
	PAGE 10 DEPR					7,750.		0.	7,750.	0.	0.	65.

\* ITC, Section 179, Salvage, Bonus, Commercial Revitalization Deduction

(D) - Asset disposed