



See a Social Security Number? Say Something!  
Report Privacy Problems to <https://public.resource.org/privacy>  
Or call the IRS Identity Theft Hotline at 1-800-908-4490



Form **990**Department of the Treasury  
Internal Revenue Service**Return of Organization Exempt From Income Tax**Under section 501(c), 527, or 4947(a)(1) of the Internal Revenue Code (except black lung  
benefit trust or private foundation)

▶ The organization may have to use a copy of this return to satisfy state reporting requirements

OMB No 1545-0047

**2010****Open to Public  
Inspection****A** For the 2010 calendar year, or tax year beginning 05/01/10 and ending 04/30/11**B** Check if applicable:

Address change

Name change

Initial return

Terminated

Amended return

Application pending

**C** Name of organization

MT MANSFIELD WINTER ACADEMY, INC

Doing Business As

Number and street (or P O box if mail is not delivered to street address)

PO BOX 3269

Room/suite

City or town state or country, and ZIP + 4

STOWE

VT 05672

**D** Employer identification number

03-0354068

**E** Telephone number**G** Gross receipts \$ 715,194**F** Name and address of principal officer**H(a)** Is this a group return for affiliates? ☐ Yes ☒ No**H(b)** Are all affiliates included? ☐ Yes ☐ No

If "No," attach a list (see instructions)

**I** Tax-exempt status ☒ 501(c)(3) ☐ 501(c) ( ) (insert no) ☐ 4947(a)(1) or ☐ 527**J** Website ▶ MMWA.ORG**H(c)** Group exemption number ▶**K** Form of organization ☒ Corporation ☐ Trust ☐ Association ☐ Other ▶**L** Year of formation 1998**M** State of legal domicile VT**Part I Summary****1** Briefly describe the organization's mission or most significant activitiesPROVIDE ACADEMIC EDUCATION SERVICES DURING 4 WINTER MONTHS TO  
STUDENTS TRAINING AS COMPETITIVE SKIERS.**2** Check this box ☐ if the organization discontinued its operations or disposed of more than 25% of its net assets**3** Number of voting members of the governing body (Part VI, line 1a)**4** Number of independent voting members of the governing body (Part VI, line 1b)**5** Total number of individuals employed in calendar year 2010 (Part V, line 2a)**6** Total number of volunteers (estimate if necessary)**7a** Total unrelated business revenue from Part VIII, column (C), line 12**b** Net unrelated business taxable income from Form 990-T, line 34

<b>3</b>	7
<b>4</b>	7
<b>5</b>	72
<b>6</b>	10
<b>7a</b>	
<b>7b</b>	0

**8** Contributions and grants (Part VIII, line 1h)**9** Program service revenue (Part VIII, line 2g)**10** Investment income (Part VIII, column (A), lines 3, 4, and 7d)**11** Other revenue (Part VIII, column (A), lines 5, 6d, 8c, 9c, 10c, and 11e)**12** Total revenue - add lines 8 through 11 (must equal Part VIII, column (A), line 12)**13** Grants and similar amounts paid (Part IX, column (A), lines 1-3)**14** Benefits paid to or for members (Part IX, column (A), line 4)**15** Salaries, other compensation, employee benefits (Part IX, column (A), lines 5-10)**16a** Professional fundraising fees (Part IX, column (A), line 11e)**b** Total fundraising expenses (Part IX, column (D), line 25)**17** Other expenses (Part IX, column (A), lines 11a-11d, 11f-24f)**18** Total expenses Add lines 13-17 (must equal Part IX, column (A), line 25)**19** Revenue less expenses Subtract line 18 from line 12

Prior Year	Current Year
57,377	70,612
430,250	579,312
7,428	5
9,389	56,535
504,444	706,464
271,948	332,301
288,427	316,532
560,375	648,833
-55,931	57,631

**20** Total assets (Part X, line 16)**21** Total liabilities (Part X, line 26)**22** Net assets or fund balances Subtract line 21 from line 20

Beginning of Current Year	End of Year
1,427,569	1,454,578
1,174,197	1,143,575
253,372	311,003

**Part II Signature Block**

Under penalties of perjury, I declare that I have examined this return, including accompanying schedules and statements, and to the best of my knowledge and belief, it is true, correct and complete Declaration of preparer (other than officer) is based on all information of which preparer has any knowledge

**Sign  
Here**

Signature of officer

Date

Type or print name and title

Lori Furar Director

7-19-2011

**Paid****Preparer  
Use Only**

Print/Type preparer's name

Julie A Marckres, CPA

Preparer's signature

Julie A Marckres CPA

Date

7/12/11

Check ☐ if

self-employed

PTIN

P00295705

Firm's name ▶

Marckres Norder and Company, Inc.

Firm's EIN ▶

03-0322133

P.O. Box 732

Firm's address ▶ Morrisville, VT 05661-0732

Phone no 802-888-7781

May the IRS discuss this return with the preparer shown above? (see instructions)

Yes ☐ No ☐

For Paperwork Reduction Act Notice, see the separate instructions.

DAA

Form **990** (2010)

2-17

1

SCANNED AUG 15 2011

**Part III Statement of Program Service Accomplishments**

Check if Schedule O contains a response to any question in this Part III

**1** Briefly describe the organization's mission

PROVIDE ACADEMIC EDUCATION SERVICES DURING 4 WINTER MONTHS TO  
STUDENTS TRAINING AS COMPETITIVE SKIERS.

**2** Did the organization undertake any significant program services during the year which were not listed on the prior Form 990 or 990-EZ?Yes ☐ No ☒

If "Yes," describe these new services on Schedule O

**3** Did the organization cease conducting, or make significant changes in how it conducts, any program services?Yes ☐ No ☒

If "Yes," describe these changes on Schedule O

**4** Describe the exempt purpose achievements for each of the organization's three largest program services by expenses. Section 501(c)(3) and 501(c)(4) organizations and section 4947(a)(1) trusts are required to report the amount of grants and allocations to others, the total expenses, and revenue, if any, for each program service reported

**4a** (Code ) (Expenses \$ 526,593 including grants of \$ ) (Revenue \$ )  
PROVIDE ACADEMIC EDUCATION SERVICES DURING 4 WINTER MONTHS TO  
STUDENTS TRAINING AS COMPETITIVE SKIERS.

**4b** (Code ) (Expenses \$ including grants of \$ ) (Revenue \$ )

**4c** (Code ) (Expenses \$ including grants of \$ ) (Revenue \$ )

**4d** Other program services (Describe in Schedule O )

(Expenses \$ including grants of \$ ) (Revenue \$ )

**4e** Total program service expenses ► 526,593

**Part IV Checklist of Required Schedules**

	Yes	No
<b>1</b> Is the organization described in section 501(c)(3) or 4947(a)(1) (other than a private foundation)? If "Yes," complete Schedule A	X	
<b>2</b> Is the organization required to complete Schedule B, Schedule of Contributors? (see instructions)	X	
<b>3</b> Did the organization engage in direct or indirect political campaign activities on behalf of or in opposition to candidates for public office? If "Yes," complete Schedule C, Part I		X
<b>4 Section 501(c)(3) organizations.</b> Did the organization engage in lobbying activities, or have a section 501(h) election in effect during the tax year? If "Yes," complete Schedule C, Part II		X
<b>5</b> Is the organization a section 501(c)(4), 501(c)(5), or 501(c)(6) organization that receives membership dues, assessments, or similar amounts as defined in Revenue Procedure 98-19? If "Yes," complete Schedule C, Part III		X
<b>6</b> Did the organization maintain any donor advised funds or any similar funds or accounts where donors have the right to provide advice on the distribution or investment of amounts in such funds or accounts? If "Yes," complete Schedule D, Part I		X
<b>7</b> Did the organization receive or hold a conservation easement, including easements to preserve open space, the environment, historic land areas, or historic structures? If "Yes," complete Schedule D, Part II		X
<b>8</b> Did the organization maintain collections of works of art, historical treasures, or other similar assets? If "Yes," complete Schedule D, Part III		X
<b>9</b> Did the organization report an amount in Part X, line 21, serve as a custodian for amounts not listed in Part X, or provide credit counseling, debt management, credit repair, or debt negotiation services? If "Yes," complete Schedule D, Part IV		X
<b>10</b> Did the organization, directly or through a related organization, hold assets in term, permanent, or quasi-endowments? If "Yes," complete Schedule D, Part V		X
<b>11</b> If the organization's answer to any of the following questions is "Yes," then complete Schedule D, Parts VI, VII, VIII, IX, or X as applicable		
<b>a</b> Did the organization report an amount for land, buildings, and equipment in Part X, line 10? If "Yes," complete Schedule D, Part VI	X	
<b>b</b> Did the organization report an amount for investments—other securities in Part X, line 12 that is 5% or more of its total assets reported in Part X, line 16? If "Yes," complete Schedule D, Part VII		X
<b>c</b> Did the organization report an amount for investments—program related in Part X, line 13 that is 5% or more of its total assets reported in Part X, line 16? If "Yes," complete Schedule D, Part VIII		X
<b>d</b> Did the organization report an amount for other assets in Part X, line 15 that is 5% or more of its total assets reported in Part X, line 16? If "Yes," complete Schedule D, Part IX		X
<b>e</b> Did the organization report an amount for other liabilities in Part X, line 25? If "Yes," complete Schedule D, Part X	X	
<b>f</b> Did the organization's separate or consolidated financial statements for the tax year include a footnote that addresses the organization's liability for uncertain tax positions under FIN 48 (ASC 740)? If "Yes," complete Schedule D, Part X		X
<b>12a</b> Did the organization obtain separate, independent audited financial statements for the tax year? If "Yes," complete Schedule D, Parts XI, XII, and XIII		X
<b>b</b> Was the organization included in consolidated, independent audited financial statements for the tax year? If "Yes," and if the organization answered "No" to line 12a, then completing Schedule D, Parts XI, XII, and XIII is optional		X
<b>13</b> Is the organization a school described in section 170(b)(1)(A)(ii)? If "Yes," complete Schedule E	X	
<b>14a</b> Did the organization maintain an office, employees, or agents outside of the United States?		X
<b>b</b> Did the organization have aggregate revenues or expenses of more than \$10,000 from grantmaking, fundraising, business, and program service activities outside the United States? If "Yes," complete Schedule F, Parts I and IV		X
<b>15</b> Did the organization report on Part IX, column (A), line 3, more than \$5,000 of grants or assistance to any organization or entity located outside the United States? If "Yes," complete Schedule F, Parts II and IV		X
<b>16</b> Did the organization report on Part IX, column (A), line 3, more than \$5,000 of aggregate grants or assistance to individuals located outside the United States? If "Yes," complete Schedule F, Parts III and IV		X
<b>17</b> Did the organization report a total of more than \$15,000 of expenses for professional fundraising services on Part IX, column (A), lines 6 and 11e? If "Yes," complete Schedule G, Part I (see instructions)		X
<b>18</b> Did the organization report more than \$15,000 total of fundraising event gross income and contributions on Part VIII, lines 1c and 8a? If "Yes," complete Schedule G, Part II	X	
<b>19</b> Did the organization report more than \$15,000 of gross income from gaming activities on Part VIII, line 9a? If "Yes," complete Schedule G, Part III		X
<b>20a</b> Did the organization operate one or more hospitals? If "Yes," complete Schedule H		X
<b>b</b> If "Yes" to line 20a, did the organization attach its audited financial statements to this return? <b>Note.</b> Some Form 990 filers that operate one or more hospitals must attach audited financial statements (see instructions)		
<b>20b</b>		

**Part IV Checklist of Required Schedules (continued)**

	Yes	No
<b>21</b> Did the organization report more than \$5,000 of grants and other assistance to governments and organizations in the United States on Part IX, column (A), line 1? If "Yes," complete Schedule I, Parts I and II		X
<b>22</b> Did the organization report more than \$5,000 of grants and other assistance to individuals in the United States on Part IX, column (A), line 2? If "Yes," complete Schedule I, Parts I and III		X
<b>23</b> Did the organization answer "Yes" to Part VII, Section A, line 3, 4, or 5 about compensation of the organization's current and former officers, directors, trustees, key employees, and highest compensated employees? If "Yes," complete Schedule J		X
<b>24a</b> Did the organization have a tax-exempt bond issue with an outstanding principal amount of more than \$100,000 as of the last day of the year, that was issued after December 31, 2002? If "Yes," answer lines 24b through 24d and complete Schedule K. If "No," go to line 25		X
<b>24b</b> Did the organization invest any proceeds of tax-exempt bonds beyond a temporary period exception?		
<b>24c</b> Did the organization maintain an escrow account other than a refunding escrow at any time during the year to defease any tax-exempt bonds?		
<b>24d</b> Did the organization act as an "on behalf of" issuer for bonds outstanding at any time during the year?		
<b>25a</b> <b>Section 501(c)(3) and 501(c)(4) organizations.</b> Did the organization engage in an excess benefit transaction with a disqualified person during the year? If "Yes," complete Schedule L, Part I		X
<b>25b</b> Is the organization aware that it engaged in an excess benefit transaction with a disqualified person in a prior year, and that the transaction has not been reported on any of the organization's prior Forms 990 or 990-EZ? If "Yes," complete Schedule L, Part I		X
<b>26</b> Was a loan to or by a current or former officer, director, trustee, key employee, highly compensated employee, or disqualified person outstanding as of the end of the organization's tax year? If "Yes," complete Schedule L, Part II		X
<b>27</b> Did the organization provide a grant or other assistance to an officer, director, trustee, key employee, substantial contributor, or a grant selection committee member, or to a person related to such an individual? If "Yes," complete Schedule L, Part III		X
<b>28</b> Was the organization a party to a business transaction with one of the following parties (see Schedule L, Part IV instructions for applicable filing thresholds, conditions, and exceptions)		
<b>a</b> A current or former officer, director, trustee, or key employee? If "Yes," complete Schedule L, Part IV		X
<b>b</b> A family member of a current or former officer, director, trustee, or key employee? If "Yes," complete Schedule L, Part IV		X
<b>c</b> An entity of which a current or former officer, director, trustee, or key employee (or a family member thereof) was an officer, director, trustee, or direct or indirect owner? If "Yes," complete Schedule L, Part IV		X
<b>29</b> Did the organization receive more than \$25,000 in non-cash contributions? If "Yes," complete Schedule M		X
<b>30</b> Did the organization receive contributions of art, historical treasures, or other similar assets, or qualified conservation contributions? If "Yes," complete Schedule M		X
<b>31</b> Did the organization liquidate, terminate, or dissolve and cease operations? If "Yes," complete Schedule N, Part I		X
<b>32</b> Did the organization sell, exchange, dispose of, or transfer more than 25% of its net assets? If "Yes," complete Schedule N, Part II		X
<b>33</b> Did the organization own 100% of an entity disregarded as separate from the organization under Regulations sections 301.7701-2 and 301.7701-3? If "Yes," complete Schedule R, Part I		X
<b>34</b> Was the organization related to any tax-exempt or taxable entity? If "Yes," complete Schedule R, Parts II, III, IV, and V, line 1		X
<b>35</b> Is any related organization a controlled entity within the meaning of section 512(b)(13)?		X
<b>a</b> Did the organization receive any payment from or engage in any transaction with a controlled entity within the meaning of section 512(b)(13)? If "Yes," complete Schedule R, Part V, line 2		
<b>36</b> <b>Section 501(c)(3) organizations.</b> Did the organization make any transfers to an exempt non-charitable related organization? If "Yes," complete Schedule R, Part V, line 2		X
<b>37</b> Did the organization conduct more than 5% of its activities through an entity that is not a related organization and that is treated as a partnership for federal income tax purposes? If "Yes," complete Schedule R, Part VI		X
<b>38</b> Did the organization complete Schedule O and provide explanations in Schedule O for Part VI, lines 11 and 19? <b>Note.</b> All Form 990 filers are required to complete Schedule O	X	

☐ Yes ☒ No

**Part V Statements Regarding Other IRS Filings and Tax Compliance**

Check if Schedule O contains a response to any question in this Part V

		Yes	No
<b>1a</b> Enter the number reported in Box 3 of Form 1096. Enter -0- if not applicable.	<b>1a</b>		
<b>b</b> Enter the number of Forms W-2G included in line 1a. Enter -0- if not applicable.	<b>1b</b>		
<b>c</b> Did the organization comply with backup withholding rules for reportable payments to vendors and reportable gaming (gambling) winnings to prize winners?	<b>1c</b>		X
<b>2a</b> Enter the number of employees reported on Form W-3, Transmittal of Wage and Tax Statements, filed for the calendar year ending with or within the year covered by this return.	<b>2a</b> 72		
<b>b</b> If at least one is reported on line 2a, did the organization file all required federal employment tax returns? <b>Note.</b> If the sum of lines 1a and 2a is greater than 250, you may be required to e-file (see instructions).	<b>2b</b>	X	
<b>3a</b> Did the organization have unrelated business gross income of \$1,000 or more during the year?	<b>3a</b>		X
<b>b</b> If "Yes," has it filed a Form 990-T for this year? If "No," provide an explanation in Schedule O.	<b>3b</b>		
<b>4a</b> At any time during the calendar year, did the organization have an interest in, or a signature or other authority over, a financial account in a foreign country (such as a bank account, securities account, or other financial account)?	<b>4a</b>		X
<b>b</b> If "Yes," enter the name of the foreign country: See instructions for filing requirements for Form TD F 90-22.1, Report of Foreign Bank and Financial Accounts.			
<b>5a</b> Was the organization a party to a prohibited tax shelter transaction at any time during the tax year?	<b>5a</b>		X
<b>b</b> Did any taxable party notify the organization that it was or is a party to a prohibited tax shelter transaction?	<b>5b</b>		X
<b>c</b> If "Yes" to line 5a or 5b, did the organization file Form 8886-T?	<b>5c</b>		
<b>6a</b> Does the organization have annual gross receipts that are normally greater than \$100,000, and did the organization solicit any contributions that were not tax deductible?	<b>6a</b>		X
<b>b</b> If "Yes," did the organization include with every solicitation an express statement that such contributions or gifts were not tax deductible?	<b>6b</b>		
<b>7 Organizations that may receive deductible contributions under section 170(c).</b>			
<b>a</b> Did the organization receive a payment in excess of \$75 made partly as a contribution and partly for goods and services provided to the payor?	<b>7a</b>		
<b>b</b> If "Yes," did the organization notify the donor of the value of the goods or services provided?	<b>7b</b>		
<b>c</b> Did the organization sell, exchange, or otherwise dispose of tangible personal property for which it was required to file Form 8282?	<b>7c</b>		
<b>d</b> If "Yes," indicate the number of Forms 8282 filed during the year.	<b>7d</b>		
<b>e</b> Did the organization receive any funds, directly or indirectly, to pay premiums on a personal benefit contract?	<b>7e</b>		
<b>f</b> Did the organization, during the year, pay premiums, directly or indirectly, on a personal benefit contract?	<b>7f</b>		
<b>g</b> If the organization received a contribution of qualified intellectual property, did the organization file Form 8899 as required?	<b>7g</b>		
<b>h</b> If the organization received a contribution of cars, boats, airplanes, or other vehicles, did the organization file a Form 1098-C?	<b>7h</b>		
<b>8 Sponsoring organizations maintaining donor advised funds and section 509(a)(3) supporting organizations.</b> Did the supporting organization, or a donor advised fund maintained by a sponsoring organization, have excess business holdings at any time during the year?	<b>8</b>		
<b>9 Sponsoring organizations maintaining donor advised funds.</b>			
<b>a</b> Did the organization make any taxable distributions under section 4966?	<b>9a</b>		
<b>b</b> Did the organization make a distribution to a donor, donor advisor, or related person?	<b>9b</b>		
<b>10 Section 501(c)(7) organizations.</b> Enter			
<b>a</b> Initiation fees and capital contributions included on Part VIII, line 12.	<b>10a</b>		
<b>b</b> Gross receipts, included on Form 990, Part VIII, line 12, for public use of club facilities.	<b>10b</b>		
<b>11 Section 501(c)(12) organizations.</b> Enter			
<b>a</b> Gross income from members or shareholders.	<b>11a</b>		
<b>b</b> Gross income from other sources (Do not net amounts due or paid to other sources against amounts due or received from them.)	<b>11b</b>		
<b>12a Section 4947(a)(1) non-exempt charitable trusts.</b> Is the organization filing Form 990 in lieu of Form 1041?	<b>12a</b>		
<b>b</b> If "Yes," enter the amount of tax-exempt interest received or accrued during the year.	<b>12b</b>		
<b>13 Section 501(c)(29) qualified nonprofit health insurance issuers.</b>			
<b>a</b> Is the organization licensed to issue qualified health plans in more than one state? <b>Note.</b> See the instructions for additional information the organization must report on Schedule O.	<b>13a</b>		
<b>b</b> Enter the amount of reserves the organization is required to maintain by the states in which the organization is licensed to issue qualified health plans.	<b>13b</b>		
<b>c</b> Enter the amount of reserves on hand.	<b>13c</b>		
<b>14a</b> Did the organization receive any payments for indoor tanning services during the tax year?	<b>14a</b>		X
<b>b</b> If "Yes," has it filed a Form 720 to report these payments? If "No," provide an explanation in Schedule O.	<b>14b</b>		

**Part VI Governance, Management, and Disclosure** For each "Yes" response to lines 2 through 7b below, and for a "No" response to line 8a, 8b, or 10b below, describe the circumstances, processes, or changes in Schedule O See instructions.

Check if Schedule O contains a response to any question in this Part VI ☒

**Section A. Governing Body and Management**

	Yes	No
<b>1a</b> Enter the number of voting members of the governing body at the end of the tax year	7	
<b>1b</b> Enter the number of voting members included in line 1a, above, who are independent	7	
<b>2</b> Did any officer, director, trustee, or key employee have a family relationship or a business relationship with any other officer, director, trustee, or key employee?		X
<b>3</b> Did the organization delegate control over management duties customarily performed by or under the direct supervision of officers, directors or trustees, or key employees to a management company or other person?		X
<b>4</b> Did the organization make any significant changes to its governing documents since the prior Form 990 was filed?		X
<b>5</b> Did the organization become aware during the year of a significant diversion of the organization's assets?		X
<b>6</b> Does the organization have members or stockholders?		X
<b>7a</b> Does the organization have members, stockholders, or other persons who may elect one or more members of the governing body?		X
<b>7b</b> Are any decisions of the governing body subject to approval by members, stockholders, or other persons?		X
<b>8</b> Did the organization contemporaneously document the meetings held or written actions undertaken during the year by the following		
<b>a</b> The governing body?	X	
<b>b</b> Each committee with authority to act on behalf of the governing body?	X	
<b>9</b> Is there any officer, director, trustee, or key employee listed in Part VII, Section A, who cannot be reached at the organization's mailing address? If "Yes," provide the names and addresses in Schedule O		X

**Section B. Policies (This Section B requests information about policies not required by the Internal Revenue Code.)**

	Yes	No
<b>10a</b> Does the organization have local chapters, branches, or affiliates?		X
<b>10b</b> If "Yes," does the organization have written policies and procedures governing the activities of such chapters, affiliates, and branches to ensure their operations are consistent with those of the organization?		
<b>11a</b> Has the organization provided a copy of this Form 990 to all members of its governing body before filing the form?		X
<b>12a</b> Describe in Schedule O the process, if any, used by the organization to review this Form 990		X
<b>12b</b> Does the organization have a written conflict of interest policy? If "No," go to line 13		
<b>12c</b> Are officers, directors or trustees, and key employees required to disclose annually interests that could give rise to conflicts?		
<b>13</b> Does the organization regularly and consistently monitor and enforce compliance with the policy? If "Yes," describe in Schedule O how this is done		X
<b>14</b> Does the organization have a written whistleblower policy?		X
<b>15a</b> Does the organization have a written document retention and destruction policy?		
<b>15b</b> Did the process for determining compensation of the following persons include a review and approval by independent persons, comparability data, and contemporaneous substantiation of the deliberation and decision?		
<b>a</b> The organization's CEO, Executive Director, or top management official		X
<b>b</b> Other officers or key employees of the organization		X
If "Yes" to line 15a or 15b, describe the process in Schedule O (See instructions)		
<b>16a</b> Did the organization invest in, contribute assets to, or participate in a joint venture or similar arrangement with a taxable entity during the year?		X
<b>16b</b> If "Yes," has the organization adopted a written policy or procedure requiring the organization to evaluate its participation in joint venture arrangements under applicable federal tax law, and taken steps to safeguard the organization's exempt status with respect to such arrangements?		

**Section C. Disclosure**

**17** List the states with which a copy of this Form 990 is required to be filed ☐ None

**18** Section 6104 requires an organization to make its Forms 1023 (or 1024 if applicable), 990, and 990-T (501(c)(3)s only) available for public inspection. Indicate how you make these available. Check all that apply.  
☐ Own website ☐ Another's website ☒ Upon request

**19** Describe in Schedule O whether (and if so, how), the organization makes its governing documents, conflict of interest policy, and financial statements available to the public

**20** State the name, physical address, and telephone number of the person who possesses the books and records of the organization ☐ JODY BUZZELL 3576 MOUNTAIN ROAD STOWE VT 05672

**Part VII Compensation of Officers, Directors, Trustees, Key Employees, Highest Compensated Employees, and Independent Contractors**

Check if Schedule O contains a response to any question in this Part VII

**Section A. Officers, Directors, Trustees, Key Employees, and Highest Compensated Employees****1a** Complete this table for all persons required to be listed. Report compensation for the calendar year ending with or within the organization's tax year.

- List all of the organization's **current** officers, directors, trustees (whether individuals or organizations), regardless of amount of compensation. Enter -0- in columns (D), (E), and (F) if no compensation was paid.

- List all of the organization's **current** key employees, if any. See instructions for definition of "key employee."

- List the organization's five **current** highest compensated employees (other than an officer, director, trustee, or key employee) who received reportable compensation (Box 5 of Form W-2 and/or Box 7 of Form 1099-MISC) of more than \$100,000 from the organization and any related organizations.

- List all of the organization's **former** officers, key employees, and highest compensated employees who received more than \$100,000 of reportable compensation from the organization and any related organizations.

- List all of the organization's **former directors or trustees** that received, in the capacity as a former director or trustee of the organization, more than \$10,000 of reportable compensation from the organization and any related organizations.

List persons in the following order: individual trustees or directors; institutional trustees; officers; key employees; highest compensated employees; and former such persons.

☒ Check this box if neither the organization nor any related organizations compensated any current officer, director, or trustee

(A) Name and Title	(B) Average hours per week (describe hours for related organizations in Schedule O)	(C) Position (check all that apply)						(D) Reportable compensation from the organization (W-2/1099-MISC)	(E) Reportable compensation from related organizations (W-2/1099-MISC)	(F) Estimated amount of other compensation from the organization and related organizations
		Individual trustee or director	Institutional trustee	Officer	Key employee	Highest compensated employee	Former			
(1) BIDDLE DUKE DIRECTOR	1.00	X						0	0	0
(2) PETER VANRAALTE DIRECTOR	1.00	X						0	0	0
(3) ADAM GUTSTEIN DIRECTOR	1.00	X						0	0	0
(4) NICK SARGENT DIRECTOR	1.00	X						0	0	0
(5) DEB MARTIN TREASURER	1.00			X				0	0	0
(6) SCOTT CARPENTER VICE PRESIDENT	1.00			X				0	0	0
(7) EMILY COPELAND SECRETARY	1.00			X				0	0	0
(8)										
(9)										
(10)										
(11)										
(12)										
(13)										
(14)										
(15)										
(16)										



**Part VII Section A. Officers, Directors, Trustees, Key Employees, and Highest Compensated Employees (continued)**

(A) Name and Title	(B) Average hours per week (describe hours for related organizations in Schedule O)	(C) Position (check all that apply)						(D) Reportable compensation from the organization (W-2/1099-MISC)	(E) Reportable compensation from related organizations (W-2/1099-MISC)	(F) Estimated amount of other compensation from the organization and related organizations
		Individual trustee or director	Institutional trustee	Officer	Key employee	Highest compensated employee	Former			
(17)										
(18)										
(19)										
(20)										
(21)										
(22)										
(23)										
(24)										
(25)										
(26)										
(27)										
(28)										
<b>1b Sub-total</b>										
<b>c Total from continuation sheets to Part VII, Section A</b>										
<b>d Total (add lines 1b and 1c)</b>										

**2** Total number of individuals (including but not limited to those listed above) who received more than \$100,000 in reportable compensation from the organization **0**

- 3** Did the organization list any **former** officer, director or trustee, key employee, or highest compensated employee on line 1a? If "Yes," complete Schedule J for such individual
- 4** For any individual listed on line 1a, is the sum of reportable compensation and other compensation from the organization and related organizations greater than \$150,000? If "Yes," complete Schedule J for such individual
- 5** Did any person listed on line 1a receive or accrue compensation from any unrelated organization or individual for services rendered to the organization? If "Yes," complete Schedule J for such person

	Yes	No
<b>3</b>		X
<b>4</b>		X
<b>5</b>		X

**Section B. Independent Contractors**

**1** Complete this table for your five highest compensated independent contractors that received more than \$100,000 of compensation from the organization

(A) Name and business address	(B) Description of services	(C) Compensation

**2** Total number of independent contractors (including but not limited to those listed above) who received more than \$100,000 in compensation from the organization **0**

**Part VIII Statement of Revenue**

			(A) Total revenue	(B) Related or exempt function revenue	(C) Unrelated business revenue	(D) Revenue excluded from tax under sections 512, 513, or 514
<b>Contributions, gifts, grants and other similar amounts</b>	<b>1a</b> Federated campaigns	<b>1a</b>				
	<b>b</b> Membership dues	<b>1b</b>				
	<b>c</b> Fundraising events	<b>1c</b>				
	<b>d</b> Related organizations	<b>1d</b>				
	<b>e</b> Government grants (contributions)	<b>1e</b>				
	<b>f</b> All other contributions, gifts, grants, and similar amounts not included above	<b>1f</b>	70,612			
	<b>g</b> Noncash contributions included in lines 1a-1f	\$				
	<b>h Total.</b> Add lines 1a-1f		70,612			
<b>Program Service Revenue</b>		<b>Busn Code</b>				
	<b>2a</b> TUITION & FEES	611600	437,144	437,144		
	<b>b</b> HOUSING	611600	110,053	110,053		
	<b>c</b> RESIDENTIAL APTS	532000	32,115	32,115		
	<b>d</b>					
	<b>e</b>					
	<b>f</b> All other program service revenue					
	<b>g Total.</b> Add lines 2a-2f		579,312			
<b>Other Revenue</b>	<b>3</b> Investment income (including dividends, interest, and other similar amounts)		5			5
	<b>4</b> Income from investment of tax-exempt bond proceeds					
	<b>5</b> Royalties					
		(i) Real	(ii) Personal			
	<b>6a</b> Gross Rents					
	<b>b</b> Less rental exps					
	<b>c</b> Rental inc or (loss)					
	<b>d</b> Net rental income or (loss)					
	<b>7a</b> Gross amount from sales of assets other than inventory	(i) Securities	(ii) Other			
	<b>b</b> Less cost or other basis & sales exps					
	<b>c</b> Gain or (loss)					
	<b>d</b> Net gain or (loss)					
	<b>8a</b> Gross income from fundraising events (not including \$ of contributions reported on line 1c) See Part IV, line 18	<b>a</b>	63,137			
	<b>b</b> Less direct expenses	<b>b</b>	6,717			
	<b>c</b> Net income or (loss) from fundraising events		56,420			44,598
	<b>9a</b> Gross income from gaming activities See Part IV, line 19	<b>a</b>				
	<b>b</b> Less direct expenses	<b>b</b>				
	<b>c</b> Net income or (loss) from gaming activities					
	<b>10a</b> Gross sales of inventory, less returns and allowances	<b>a</b>	1,808			
	<b>b</b> Less cost of goods sold	<b>b</b>	2,013			
<b>c</b> Net income or (loss) from sales of inventory		-205	-205			
<b>Miscellaneous Revenue</b>		<b>Busn. Code</b>				
<b>11a</b> MISCELLANEOUS		320	320			
<b>b</b>						
<b>c</b>						
<b>d</b> All other revenue						
<b>e Total.</b> Add lines 11a-11d		320				
<b>12 Total revenue.</b> See instructions		706,464	579,427	0	44,603	

**Part IX Statement of Functional Expenses**

Section 501(c)(3) and 501(c)(4) organizations must complete all columns  
All other organizations must complete column (A) but are not required to complete columns (B), (C), and (D)

Do not include amounts reported on lines 6b, 7b, 8b, 9b, and 10b of Part VIII.	(A) Total expenses	(B) Program service expenses	(C) Management and general expenses	(D) Fundraising expenses
1 Grants and other assistance to governments and organizations in the U S See Part IV, line 21				
2 Grants and other assistance to individuals in the U S See Part IV, line 22				
3 Grants and other assistance to governments, organizations, and individuals outside the U S See Part IV, lines 15 and 16				
4 Benefits paid to or for members				
5 Compensation of current officers, directors, trustees, and key employees				
6 Compensation not included above, to disqualified persons (as defined under section 4958(f)(1)) and persons described in section 4958(c)(3)(B)				
7 Other salaries and wages	285,739	203,883	81,856	
8 Pension plan contributions (include section 401(k) and section 403(b) employer contributions)				
9 Other employee benefits	19,774		19,774	
10 Payroll taxes	26,788	19,114	7,674	
11 Fees for services (non-employees)				
a Management				
b Legal				
c Accounting	2,031		2,031	
d Lobbying				
e Professional fundraising services See Part IV, line 17				
f Investment management fees				
g Other				
12 Advertising and promotion	11,868	11,868		
13 Office expenses	10,235		10,235	
14 Information technology				
15 Royalties				
16 Occupancy	96,739	96,739		
17 Travel				
18 Payments of travel or entertainment expenses for any federal, state, or local public officials				
19 Conferences, conventions, and meetings				
20 Interest	62,231	62,231		
21 Payments to affiliates				
22 Depreciation, depletion, and amortization	47,965	47,965		
23 Insurance				
24 Other expenses Itemize expenses not covered above (List miscellaneous expenses in line 24f. If line 24f amount exceeds 10% of line 25, column (A) amount, list line 24f expenses on Schedule O.)				
a SUPPLIES	47,990	47,990		
b INSURANCE	21,226	21,226		
c AUTO	3,844	3,844		
d MISCELLANEOUS	3,717	3,717		
e INDEPENDENT CONTRACTORS	3,248	3,248		
f All other expenses	5,438	4,768	670	
25 Total functional expenses. Add lines 1 through 24f	648,833	526,593	122,240	0
26 Joint costs. Check here <input type="checkbox"/> if following SOP 98-2 (ASC 958-720). Complete this line only if the organization reported in column (B) joint costs from a combined educational campaign and fundraising solicitation				

**Part X Balance Sheet**

		(A) Beginning of year		(B) End of year
<b>Assets</b>	1 Cash—non-interest bearing	18,743	1	18,472
	2 Savings and temporary cash investments	585	2	5,490
	3 Pledges and grants receivable, net		3	
	4 Accounts receivable, net	2,843	4	14,510
	5 Receivables from current and former officers, directors, trustees, key employees, and highest compensated employees. Complete Part II of Schedule L		5	
	6 Receivables from other disqualified persons (as defined under section 4958(f)(1)), persons described in section 4958(c)(3)(B), and contributing employers and sponsoring organizations of section 501(c)(9) voluntary employees' beneficiary organizations (see instructions)		6	
	7 Notes and loans receivable, net		7	
	8 Inventories for sale or use		8	
	9 Prepaid expenses and deferred charges		9	
	10a Land, buildings, and equipment—cost or other basis. Complete Part VI of Schedule D	10a 1,692,463		
	b Less: accumulated depreciation	10b 276,357	1,405,398	10c 1,416,106
	11 Investments—publicly traded securities		11	
	12 Investments—other securities. See Part IV, line 11		12	
	13 Investments—program-related. See Part IV, line 11		13	
	14 Intangible assets		14	
	15 Other assets. See Part IV, line 11		15	
16 <b>Total assets.</b> Add lines 1 through 15 (must equal line 34)		1,427,569	16	1,454,578
<b>Liabilities</b>	17 Accounts payable and accrued expenses		17	
	18 Grants payable		18	
	19 Deferred revenue	25,000	19	2,500
	20 Tax-exempt bond liabilities		20	
	21 Escrow or custodial account liability. Complete Part IV of Schedule D		21	
	22 Payables to current and former officers, directors, trustees, key employees, highest compensated employees, and disqualified persons. Complete Part II of Schedule L		22	
	23 Secured mortgages and notes payable to unrelated third parties	1,145,097	23	1,118,575
	24 Unsecured notes and loans payable to unrelated third parties		24	
	25 Other liabilities. Complete Part X of Schedule D	4,100	25	22,500
	26 <b>Total liabilities.</b> Add lines 17 through 25	1,174,197	26	1,143,575
<b>Net Assets or Fund Balances</b>	<b>Organizations that follow SFAS 117, check here <input checked="" type="checkbox"/> and complete lines 27 through 29, and lines 33 and 34.</b>			
	27 Unrestricted net assets	253,372	27	311,003
	28 Temporarily restricted net assets		28	
	29 Permanently restricted net assets		29	
	<b>Organizations that do not follow SFAS 117, check here <input type="checkbox"/> and complete lines 30 through 34.</b>			
	30 Capital stock or trust principal, or current funds		30	
	31 Paid-in or capital surplus, or land, building, or equipment fund		31	
	32 Retained earnings, endowment, accumulated income, or other funds		32	
	33 <b>Total net assets or fund balances</b>	253,372	33	311,003
34 <b>Total liabilities and net assets/fund balances</b>	1,427,569	34	1,454,578	

**Part XI Reconciliation of Net Assets**

Check if Schedule O contains a response to any question in this Part XI

1	Total revenue (must equal Part VIII, column (A), line 12)	1	706,464
2	Total expenses (must equal Part IX, column (A), line 25)	2	648,833
3	Revenue less expenses Subtract line 2 from line 1	3	57,631
4	Net assets or fund balances at beginning of year (must equal Part X, line 33, column (A))	4	253,372
5	Other changes in net assets or fund balances (explain in Schedule O)	5	
6	Net assets or fund balances at end of year Combine lines 3, 4, and 5 (must equal Part X, line 33, column (B))	6	311,003

**Part XII Financial Statements and Reporting**

Check if Schedule O contains a response to any question in this Part XII

- 1 Accounting method used to prepare the Form 990 Cash ☒ Accrual ☐ Other \_\_\_\_\_  
If the organization changed its method of accounting from a prior year or checked "Other," explain in Schedule O
- 2a Were the organization's financial statements compiled or reviewed by an independent accountant?
- b Were the organization's financial statements audited by an independent accountant?
- c If "Yes" to line 2a or 2b, does the organization have a committee that assumes responsibility for oversight of the audit, review, or compilation of its financial statements and selection of an independent accountant? If the organization changed either its oversight process or selection process during the tax year, explain in Schedule O
- d If "Yes" to line 2a or 2b, check a box below to indicate whether the financial statements for the year were issued on a separate basis, consolidated basis, or both  
☐ Separate basis ☐ Consolidated basis ☐ Both consolidated and separate basis
- 3a As a result of a federal award, was the organization required to undergo an audit or audits as set forth in the Single Audit Act and OMB Circular A-133?
- b If "Yes," did the organization undergo the required audit or audits? If the organization did not undergo the required audit or audits, explain why in Schedule O and describe any steps taken to undergo such audits

	Yes	No
2a		X
2b		X
2c		
3a		
3b		

**SCHEDULE A**  
**(Form 990 or 990-EZ)**Department of the Treasury  
Internal Revenue Service**Public Charity Status and Public Support**

Complete if the organization is a section 501(c)(3) organization or a section 4947(a)(1) nonexempt charitable trust.

▶ Attach to Form 990 or Form 990-EZ. ▶ See separate instructions.

OMB No 1545-0047

**2010**Open to Public  
Inspection

Name of the organization

MT MANSFIELD WINTER ACADEMY, INC

Employer identification number

03-0354068

**Part I Reason for Public Charity Status (All organizations must complete this part) See instructions.**

The organization is not a private foundation because it is (For lines 1 through 11, check only one box.)

- 1 ☐ A church, convention of churches, or association of churches described in **section 170(b)(1)(A)(i).**
- 2 ☒ A school described in **section 170(b)(1)(A)(ii).** (Attach Schedule E.)
- 3 ☐ A hospital or a cooperative hospital service organization described in **section 170(b)(1)(A)(iii).**
- 4 ☐ A medical research organization operated in conjunction with a hospital described in **section 170(b)(1)(A)(iii).** Enter the hospital's name, city, and state
- 5 ☐ An organization operated for the benefit of a college or university owned or operated by a governmental unit described in **section 170(b)(1)(A)(iv).** (Complete Part II.)
- 6 ☐ A federal, state, or local government or governmental unit described in **section 170(b)(1)(A)(v).**
- 7 ☐ An organization that normally receives a substantial part of its support from a governmental unit or from the general public described in **section 170(b)(1)(A)(vi).** (Complete Part II.)
- 8 ☐ A community trust described in **section 170(b)(1)(A)(vi).** (Complete Part II.)
- 9 ☐ An organization that normally receives (1) more than 33 1/3% of its support from contributions, membership fees, and gross receipts from activities related to its exempt functions—subject to certain exceptions, and (2) no more than 33 1/3% of its support from gross investment income and unrelated business taxable income (less section 511 tax) from businesses acquired by the organization after June 30, 1975. See **section 509(a)(2).** (Complete Part III.)
- 10 ☐ An organization organized and operated exclusively to test for public safety. See **section 509(a)(4).**
- 11 ☐ An organization organized and operated exclusively for the benefit of, to perform the functions of, or to carry out the purposes of one or more publicly supported organizations described in section 509(a)(1) or section 509(a)(2). See **section 509(a)(3).** Check the box that describes the type of supporting organization and complete lines 11e through 11h.
- a ☐ Type I      b ☐ Type II      c ☐ Type III—Functionally integrated      d ☐ Type III—Other
- e ☐ By checking this box, I certify that the organization is not controlled directly or indirectly by one or more disqualified persons other than foundation managers and other than one or more publicly supported organizations described in section 509(a)(1) or section 509(a)(2).
- f ☐ If the organization received a written determination from the IRS that it is a Type I, Type II, or Type III supporting organization, check this box.
- g ☐ Since August 17, 2006, has the organization accepted any gift or contribution from any of the following persons?
- (i) A person who directly or indirectly controls, either alone or together with persons described in (ii) and (iii) below, the governing body of the supported organization?
- (ii) A family member of a person described in (i) above?
- (iii) A 35% controlled entity of a person described in (i) or (ii) above?
- h ☐ Provide the following information about the supported organization(s).

	Yes	No
11g(i)		
11g(ii)		
11g(iii)		

(i) Name of supported organization	(ii) EIN	(iii) Type of organization (described on lines 1–9 above or IRC section (see instructions))	(iv) Is the organization in col (i) listed in your governing document?		(v) Did you notify the organization in col (i) of your support?		(vi) Is the organization in col (i) organized in the U.S.?		(vii) Amount of support
			Yes	No	Yes	No	Yes	No	
(A)									
(B)									
(C)									
(D)									
(E)									
Total									

For Paperwork Reduction Act Notice, see the Instructions for Form 990 or 990-EZ.

Schedule A (Form 990 or 990-EZ) 2010

**Part II Support Schedule for Organizations Described in Sections 170(b)(1)(A)(iv) and 170(b)(1)(A)(vi)**  
 (Complete only if you checked the box on line 5, 7, or 8 of Part I or if the organization failed to qualify under Part III. If the organization fails to qualify under the tests listed below, please complete Part III.)

**Section A. Public Support**

Calendar year (or fiscal year beginning in) ►	(a) 2006	(b) 2007	(c) 2008	(d) 2009	(e) 2010	(f) Total
<b>1</b> Gifts, grants, contributions, and membership fees received (Do not include any "unusual grants.")						
<b>2</b> Tax revenues levied for the organization's benefit and either paid to or expended on its behalf						
<b>3</b> The value of services or facilities furnished by a governmental unit to the organization without charge						
<b>4</b> <b>Total.</b> Add lines 1 through 3						
<b>5</b> The portion of total contributions by each person (other than a governmental unit or publicly supported organization) included on line 1 that exceeds 2% of the amount shown on line 11, column (f)						
<b>6</b> <b>Public support.</b> Subtract line 5 from line 4						

**Section B. Total Support**

Calendar year (or fiscal year beginning in) ►	(a) 2006	(b) 2007	(c) 2008	(d) 2009	(e) 2010	(f) Total
<b>7</b> Amounts from line 4						
<b>8</b> Gross income from interest, dividends, payments received on securities loans, rents, royalties and income from similar sources						
<b>9</b> Net income from unrelated business activities, whether or not the business is regularly carried on						
<b>10</b> Other income Do not include gain or loss from the sale of capital assets (Explain in Part IV.)						
<b>11</b> <b>Total support.</b> Add lines 7 through 10						
<b>12</b> Gross receipts from related activities, etc. (see instructions)						

12

**13** **First five years.** If the Form 990 is for the organization's first, second, third, fourth, or fifth tax year as a section 501(c)(3) organization, check this box and **stop here** ►

**Section C. Computation of Public Support Percentage**

<b>14</b> Public support percentage for 2010 (line 6, column (f) divided by line 11, column (f))	<b>14</b>	%
<b>15</b> Public support percentage from 2009 Schedule A, Part II, line 14	<b>15</b>	%
<b>16a</b> <b>33 1/3% support test—2010.</b> If the organization did not check the box on line 13, and line 14 is 33 1/3% or more, check this box and <b>stop here.</b> The organization qualifies as a publicly supported organization ►		
<b>b</b> <b>33 1/3% support test—2009.</b> If the organization did not check a box on line 13 or 16a, and line 15 is 33 1/3% or more, check this box and <b>stop here.</b> The organization qualifies as a publicly supported organization ►		
<b>17a</b> <b>10%-facts-and-circumstances test—2010.</b> If the organization did not check a box on line 13, 16a, or 16b, and line 14 is 10% or more, and if the organization meets the "facts-and-circumstances" test, check this box and <b>stop here.</b> Explain in Part IV how the organization meets the "facts-and-circumstances" test The organization qualifies as a publicly supported organization ►		
<b>b</b> <b>10%-facts-and-circumstances test—2009.</b> If the organization did not check a box on line 13, 16a, 16b, or 17a, and line 15 is 10% or more, and if the organization meets the "facts-and-circumstances" test, check this box and <b>stop here.</b> Explain in Part IV how the organization meets the "facts-and-circumstances" test The organization qualifies as a publicly supported organization ►		
<b>18</b> <b>Private foundation.</b> If the organization did not check a box on line 13, 16a, 16b, 17a, or 17b, check this box and see instructions ►		

**Part III Support Schedule for Organizations Described in Section 509(a)(2)**

(Complete only if you checked the box on line 9 of Part I or if the organization failed to qualify under Part II.  
If the organization fails to qualify under the tests listed below, please complete Part II.)

**Section A. Public Support**

Calendar year (or fiscal year beginning in) ►	(a) 2006	(b) 2007	(c) 2008	(d) 2009	(e) 2010	(f) Total
<b>1</b> Gifts, grants, contributions, and membership fees received (Do not include any "unusual grants.")						
<b>2</b> Gross receipts from admissions, merchandise sold or services performed, or facilities furnished in any activity that is related to the organization's tax-exempt purpose						
<b>3</b> Gross receipts from activities that are not an unrelated trade or business under section 513						
<b>4</b> Tax revenues levied for the organization's benefit and either paid to or expended on its behalf						
<b>5</b> The value of services or facilities furnished by a governmental unit to the organization without charge						
<b>6</b> <b>Total.</b> Add lines 1 through 5						
<b>7a</b> Amounts included on lines 1, 2, and 3 received from disqualified persons						
<b>b</b> Amounts included on lines 2 and 3 received from other than disqualified persons that exceed the greater of \$5,000 or 1% of the amount on line 13 for the year						
<b>c</b> Add lines 7a and 7b						
<b>8</b> <b>Public support.</b> (Subtract line 7c from line 6.)						

**Section B. Total Support**

Calendar year (or fiscal year beginning in) ►	(a) 2006	(b) 2007	(c) 2008	(d) 2009	(e) 2010	(f) Total
<b>9</b> Amounts from line 6						
<b>10a</b> Gross income from interest, dividends, payments received on securities loans, rents, royalties and income from similar sources						
<b>b</b> Unrelated business taxable income (less section 511 taxes) from businesses acquired after June 30, 1975						
<b>c</b> Add lines 10a and 10b						
<b>11</b> Net income from unrelated business activities not included in line 10b, whether or not the business is regularly carried on						
<b>12</b> Other income. Do not include gain or loss from the sale of capital assets (Explain in Part IV.)						
<b>13</b> <b>Total support.</b> (Add lines 9, 10c, 11, and 12.)						
<b>14</b> <b>First five years.</b> If the Form 990 is for the organization's first, second, third, fourth, or fifth tax year as a section 501(c)(3) organization, check this box and <b>stop here</b> ►						

**Section C. Computation of Public Support Percentage**

<b>15</b> Public support percentage for 2010 (line 8, column (f) divided by line 13, column (f))	<b>15</b>	%
<b>16</b> Public support percentage from 2009 Schedule A, Part III, line 15	<b>16</b>	%

**Section D. Computation of Investment Income Percentage**

<b>17</b> Investment income percentage for 2010 (line 10c, column (f) divided by line 13, column (f))	<b>17</b>	%
<b>18</b> Investment income percentage from 2009 Schedule A, Part III, line 17	<b>18</b>	%

- 19a 33 1/3% support tests—2010.** If the organization did not check the box on line 14, and line 15 is more than 33 1/3%, and line 17 is not more than 33 1/3%, check this box and **stop here**. The organization qualifies as a publicly supported organization ►
- b 33 1/3% support tests—2009.** If the organization did not check a box on line 14 or line 19a, and line 16 is more than 33 1/3%, and line 18 is not more than 33 1/3%, check this box and **stop here**. The organization qualifies as a publicly supported organization ►
- 20 Private foundation.** If the organization did not check a box on line 14, 19a, or 19b, check this box and see instructions ►



**Part IV** **Supplemental Information.** Complete this part to provide the explanations required by Part II, line 10; Part II, line 17a or 17b, and Part III, line 12. Also complete this part for any additional information. (See instructions).

---

**SCHEDULE D  
(Form 990)**Department of the Treasury  
Internal Revenue Service**Supplemental Financial Statements**▶ Complete if the organization answered "Yes," to Form 990,  
Part IV, line 6, 7, 8, 9, 10, 11, or 12.

▶ Attach to Form 990. ▶ See separate instructions.

OMB No 1545-0047

**2010**Open to Public  
Inspection

Name of the organization

Employer identification number

MT MANSFIELD WINTER ACADEMY, INC

03-0354068

**Part I Organizations Maintaining Donor Advised Funds or Other Similar Funds or Accounts.** Complete if the organization answered "Yes" to Form 990, Part IV, line 6

	(a) Donor advised funds	(b) Funds and other accounts
1 Total number at end of year		
2 Aggregate contributions to (during year)		
3 Aggregate grants from (during year)		
4 Aggregate value at end of year		
5 Did the organization inform all donors and donor advisors in writing that the assets held in donor advised funds are the organization's property, subject to the organization's exclusive legal control? <span style="float: right;">Yes <input type="checkbox"/> No <input type="checkbox"/></span>		
6 Did the organization inform all grantees, donors, and donor advisors in writing that grant funds can be used only for charitable purposes and not for the benefit of the donor or donor advisor, or for any other purpose conferring impermissible private benefit? <span style="float: right;">Yes <input type="checkbox"/> No <input type="checkbox"/></span>		

**Part II Conservation Easements.** Complete if the organization answered "Yes" to Form 990, Part IV, line 7

1 Purpose(s) of conservation easements held by the organization (check all that apply)

☐ Preservation of land for public use (e.g., recreation or education) ☐ Preservation of an historically important land area

☐ Protection of natural habitat ☐ Preservation of a certified historic structure

☐ Preservation of open space

2 Complete lines 2a through 2d if the organization held a qualified conservation contribution in the form of a conservation easement on the last day of the tax year

	Held at the End of the Tax Year
a Total number of conservation easements	2a
b Total acreage restricted by conservation easements	2b
c Number of conservation easements on a certified historic structure included in (a)	2c
d Number of conservation easements included in (c) acquired after 8/17/06, and not on a historic structure listed in the National Register	2d

3 Number of conservation easements modified, transferred, released, extinguished, or terminated by the organization during the tax year ▶

4 Number of states where property subject to conservation easement is located ▶

5 Does the organization have a written policy regarding the periodic monitoring, inspection, handling of violations, and enforcement of the conservation easements it holds? Yes ☐ No ☐

6 Staff and volunteer hours devoted to monitoring, inspecting, and enforcing conservation easements during the year ▶

7 Amount of expenses incurred in monitoring, inspecting, and enforcing conservation easements during the year ▶ \$

8 Does each conservation easement reported on line 2(d) above satisfy the requirements of section 170(h)(4)(B)(i) and section 170(h)(4)(B)(ii)? Yes ☐ No ☐

9 In Part XIV, describe how the organization reports conservation easements in its revenue and expense statement, and balance sheet, and include, if applicable, the text of the footnote to the organization's financial statements that describes the organization's accounting for conservation easements

**Part III Organizations Maintaining Collections of Art, Historical Treasures, or Other Similar Assets.** Complete if the organization answered "Yes" to Form 990, Part IV, line 8.

1a If the organization elected, as permitted under SFAS 116 (ASC 958), not to report in its revenue statement and balance sheet works of art, historical treasures, or other similar assets held for public exhibition, education, or research in furtherance of public service, provide, in Part XIV, the text of the footnote to its financial statements that describes these items

b If the organization elected, as permitted under SFAS 116 (ASC 958), to report in its revenue statement and balance sheet works of art, historical treasures, or other similar assets held for public exhibition, education, or research in furtherance of public service, provide the following amounts relating to these items

(i) Revenues included in Form 990, Part VIII, line 1 ▶ \$

(ii) Assets included in Form 990, Part X ▶ \$

2 If the organization received or held works of art, historical treasures, or other similar assets for financial gain, provide the following amounts required to be reported under SFAS 116 (ASC 958) relating to these items

a Revenues included in Form 990, Part VIII, line 1 ▶ \$

b Assets included in Form 990, Part X ▶ \$

**Part III Organizations Maintaining Collections of Art, Historical Treasures, or Other Similar Assets (continued)**

3 Using the organization's acquisition, accession, and other records, check any of the following that are a significant use of its collection items (check all that apply)

- a ☐ Public exhibition d ☐ Loan or exchange programs  
 b ☐ Scholarly research e ☐ Other  
 c ☐ Preservation for future generations

4 Provide a description of the organization's collections and explain how they further the organization's exempt purpose in Part XIV

5 During the year, did the organization solicit or receive donations of art, historical treasures, or other similar assets to be sold to raise funds rather than to be maintained as part of the organization's collection? ☐ Yes ☐ No

**Part IV Escrow and Custodial Arrangements. Complete if the organization answered "Yes" to Form 990, Part IV, line 9, or reported an amount on Form 990, Part X, line 21**

1a Is the organization an agent, trustee, custodian or other intermediary for contributions or other assets not included on Form 990, Part X? ☐ Yes ☐ No

b If "Yes," explain the arrangement in Part XIV and complete the following table

- c Beginning balance  
 d Additions during the year  
 e Distributions during the year  
 f Ending balance

	Amount
1c	
1d	
1e	
1f	

2a Did the organization include an amount on Form 990, Part X, line 21? ☐ Yes ☐ No

b If "Yes," explain the arrangement in Part XIV

**Part V Endowment Funds. Complete if organization answered "Yes" to Form 990, Part IV, line 10.**

	(a) Current year	(b) Prior year	(c) Two years back	(d) Three years back	(e) Four years back
1a Beginning of year balance					
b Contributions					
c Net investment earnings, gains, and losses					
d Grants or scholarships					
e Other expenditures for facilities and programs					
f Administrative expenses					
g End of year balance					

2 Provide the estimated percentage of the year end balance held as

- a Board designated or quasi-endowment ☐ %  
 b Permanent endowment ☐ %  
 c Term endowment ☐ %

3a Are there endowment funds not in the possession of the organization that are held and administered for the organization by

- (i) unrelated organizations  
 (ii) related organizations

b If "Yes" to 3a(ii), are the related organizations listed as required on Schedule R?

	Yes	No
3a(i)		
3a(ii)		
3b		

4 Describe in Part XIV the intended uses of the organization's endowment funds

**Part VI Land, Buildings, and Equipment. See Form 990, Part X, line 10.**

Description of investment	(a) Cost or other basis (investment)	(b) Cost or other basis (other)	(c) Accumulated depreciation	(d) Book value
1a Land		75,190		75,190
b Buildings		1,476,223	185,099	1,291,124
c Leasehold improvements				
d Equipment		104,326	86,145	18,181
e Other		36,724	5,113	31,611
<b>Total.</b> Add lines 1a through 1e (Column (d) must equal Form 990, Part X, column (B), line 10(c))				1,416,106

**Part VII Investments—Other Securities.** See Form 990, Part X, line 12.

(a) Description of security or category (including name of security)	(b) Book value	(c) Method of valuation Cost or end-of-year market value
(1) Financial derivatives		
(2) Closely-held equity interests		
(3) Other		
(A)		
(B)		
(C)		
(D)		
(E)		
(F)		
(G)		
(H)		
(I)		
<b>Total.</b> (Column (b) must equal Form 990, Part X, col (B) line 12 )		

**Part VIII Investments—Program Related.** See Form 990, Part X, line 13.

(a) Description of investment type	(b) Book value	(c) Method of valuation Cost or end-of-year market value
(1)		
(2)		
(3)		
(4)		
(5)		
(6)		
(7)		
(8)		
(9)		
(10)		
<b>Total.</b> (Column (b) must equal Form 990, Part X, col (B) line 13 )		

**Part IX Other Assets.** See Form 990, Part X, line 15.

(a) Description	(b) Book value
(1)	
(2)	
(3)	
(4)	
(5)	
(6)	
(7)	
(8)	
(9)	
(10)	
<b>Total.</b> (Column (b) must equal Form 990, Part X, col (B) line 15 )	

**Part X Other Liabilities.** See Form 990, Part X, line 25.

1. (a) Description of liability	(b) Amount
(1) Federal income taxes	
(2) SECURITY DEPOSITS	22,500
(3)	
(4)	
(5)	
(6)	
(7)	
(8)	
(9)	
(10)	
(11)	
<b>Total.</b> (Column (b) must equal Form 990, Part X, col (B) line 25 )	22,500

2. FIN 48 (ASC 740) Footnote In Part XIV, provide the text of the footnote to the organization's financial statements that reports the organization's liability for uncertain tax positions under FIN 48 (ASC 740)

**Part XI Reconciliation of Change in Net Assets from Form 990 to Audited Financial Statements**

1	Total revenue (Form 990, Part VIII, column (A), line 12)	1	
2	Total expenses (Form 990, Part IX, column (A), line 25)	2	
3	Excess or (deficit) for the year Subtract line 2 from line 1	3	
4	Net unrealized gains (losses) on investments	4	
5	Donated services and use of facilities	5	
6	Investment expenses	6	
7	Prior period adjustments	7	
8	Other (Describe in Part XIV )	8	
9	Total adjustments (net) Add lines 4 through 8	9	
10	Excess or (deficit) for the year per audited financial statements Combine lines 3 and 9	10	

**Part XII Reconciliation of Revenue per Audited Financial Statements With Revenue per Return**

1	Total revenue, gains, and other support per audited financial statements	1	
2	Amounts included on line 1 but not on Form 990, Part VIII, line 12		
a	Net unrealized gains on investments	2a	
b	Donated services and use of facilities	2b	
c	Recoveries of prior year grants	2c	
d	Other (Describe in Part XIV )	2d	
e	Add lines 2a through 2d	2e	
3	Subtract line 2e from line 1	3	
4	Amounts included on Form 990, Part VIII, line 12, but not on line 1:		
a	Investment expenses not included on Form 990, Part VIII, line 7b	4a	
b	Other (Describe in Part XIV )	4b	
c	Add lines 4a and 4b	4c	
5	Total revenue Add lines 3 and 4c. (This must equal Form 990, Part I, line 12 )	5	

**Part XIII Reconciliation of Expenses per Audited Financial Statements With Expenses per Return**

1	Total expenses and losses per audited financial statements	1	
2	Amounts included on line 1 but not on Form 990, Part IX, line 25		
a	Donated services and use of facilities	2a	
b	Prior year adjustments	2b	
c	Other losses	2c	
d	Other (Describe in Part XIV )	2d	
e	Add lines 2a through 2d	2e	
3	Subtract line 2e from line 1	3	
4	Amounts included on Form 990, Part IX, line 25, but not on line 1:		
a	Investment expenses not included on Form 990, Part VIII, line 7b	4a	
b	Other (Describe in Part XIV )	4b	
c	Add lines 4a and 4b	4c	
5	Total expenses Add lines 3 and 4c. (This must equal Form 990, Part I, line 18 )	5	

**Part XIV Supplemental Information**

Complete this part to provide the descriptions required for Part II, lines 3, 5, and 9, Part III, lines 1a and 4, Part IV, lines 1b and 2b, Part V, line 4, Part X, line 2, Part XI, line 8, Part XII, lines 2d and 4b, and Part XIII, lines 2d and 4b. Also complete this part to provide any additional information.

**Part XIV Supplemental Information (continued)**

**SCHEDULE E**  
**(Form 990 or 990-EZ)**Department of the Treasury  
Internal Revenue Service

Name of the organization

**Schools**

- Complete if the organization answered "Yes" to Form 990, Part IV, line 13, or  
Form 990-EZ, Part VI, line 48  
► Attach to Form 990 or Form 990-EZ.

OMB No 1545-0047

**2010****Open to Public  
Inspection**

Employer identification number

03-0354068

MT MANSFIELD WINTER ACADEMY, INC

**Part I**

	YES	NO
1 Does the organization have a racially nondiscriminatory policy toward students by statement in its charter, bylaws, other governing instrument, or in a resolution of its governing body?	X	
2 Does the organization include a statement of its racially nondiscriminatory policy toward students in all its brochures, catalogues, and other written communications with the public dealing with student admissions, programs, and scholarships?	X	
3 Has the organization publicized its racially nondiscriminatory policy through newspaper or broadcast media during the period of solicitation for students, or during the registration period if it has no solicitation program, in a way that makes the policy known to all parts of the general community it serves? If "Yes," please describe. If "No," please explain. If you need more space, use Part II. POLICY IS POSTED IN THE SCHOOL. PUBLICIZED IN THE PAPER YEARLY, AND INCLUDED IN THE APPLICATION/INFORMATION PACKET.	X	
4 Does the organization maintain the following?		
a Records indicating the racial composition of the student body, faculty, and administrative staff?	X	
b Records documenting that scholarships and other financial assistance are awarded on a racially nondiscriminatory basis?	X	
c Copies of all catalogues, brochures, announcements, and other written communications to the public dealing with student admissions, programs, and scholarships?	X	
d Copies of all material used by the organization or on its behalf to solicit contributions? If you answered "No" to any of the above, please explain. If you need more space, use Part II.	X	
5 Does the organization discriminate by race in any way with respect to		
a Students' rights or privileges?		X
b Admissions policies?		X
c Employment of faculty or administrative staff?		X
d Scholarships or other financial assistance?		X
e Educational policies?		X
f Use of facilities?		X
g Athletic programs?		X
h Other extracurricular activities? If you answered "Yes" to any of the above, please explain. If you need more space, use Part II.		X
6a Does the organization receive any financial aid or assistance from a governmental agency?		X
6b Has the organization's right to such aid ever been revoked or suspended? If you answered "Yes" to either line 6a or line 6b, explain on Part II.		X
7 Does the organization certify that it has complied with the applicable requirements of sections 4 01 through 4 05 of Rev. Proc. 75-50, 1975-2 C.B. 587, covering racial nondiscrimination? If "No," explain on Part II.	X	

**Part II**

**Supplemental Information.** Complete this part to provide the explanations required by Part I, lines 3, 4d, 5h, 6b, and 7, as applicable. Also complete this part to provide any other additional information (see instructions).



**SCHEDULE G**  
**(Form 990 or 990-EZ)**Department of the Treasury  
Internal Revenue Service**Supplemental Information Regarding**  
**Fundraising or Gaming Activities**Complete if the organization answered "Yes" to Form 990, Part IV, lines 17, 18, or 19, or if the  
organization entered more than \$15,000 on Form 990-EZ, line 6a.  
▶ Attach to Form 990 or Form 990-EZ ▶ See separate instructions

OMB No 1545-0047

**2010**Open To Public  
Inspection

Name of the organization

MT MANSFIELD WINTER ACADEMY, INC

Employer identification number

03-0354068

**Part I****Fundraising Activities.** Complete if the organization answered "Yes" to Form 990, Part IV, line 17  
Form 990-EZ filers are not required to complete this part**1** Indicate whether the organization raised funds through any of the following activities. Check all that apply.

- a** ☐ Mail solicitations                      **e** ☐ Solicitation of non-government grants
- b** ☐ Internet and email solicitations                      **f** ☐ Solicitation of government grants
- c** ☐ Phone solicitations                      **g** ☐ Special fundraising events
- d** ☐ In-person solicitations

**2a** Did the organization have a written or oral agreement with any individual (including officers, directors, trustees  
or key employees listed in Form 990, Part VII) or entity in connection with professional fundraising services?Yes ☐ No ☐**b** If "Yes," list the ten highest paid individuals or entities (fundraisers) pursuant to agreements under which the fundraiser is to be  
compensated at least \$5,000 by the organization

	(i) Name and address of individual or entity (fundraiser)	(ii) Activity	(iii) Did fundraiser have custody or control of contributions?		(iv) Gross receipts from activity	(v) Amount paid to (or retained by) fundraiser listed in col (i)	(vi) Amount paid to (or retained by) organization
			Yes	No			
1							
2							
3							
4							
5							
6							
7							
8							
9							
10							
<b>Total</b>							

**3** List all states in which the organization is registered or licensed to solicit contributions or has been notified it is exempt from  
registration or licensing

**Part II Fundraising Events.** Complete if the organization answered "Yes" to Form 990, Part IV, line 18, or reported more than \$15,000 of fundraising event contributions and gross income on Form 990-EZ, lines 1 and 6b. List events with gross receipts greater than \$5,000.

		(a) Event #1	(b) Event #2	(c) Other events	(d) Total events
		<u>DREAM HOME RAFF</u>	<u>BIKE RALLY</u>	<u>None</u>	(add col (a) through col (c))
		(event type)	(event type)	(total number)	
Revenue	1 Gross receipts	46,010	14,230		60,240
	2 Less Charitable contributions				
	3 Gross income (line 1 minus line 2)	46,010	14,230		60,240
Direct Expenses	4 Cash prizes				
	5 Noncash prizes				
	6 Rent/facility costs				
	7 Food and beverages				
	8 Entertainment				
	9 Other direct expenses	1,412	3,464		4,876
	10 Direct expense summary Add lines 4 through 9 in column (d)				4,876
	11 Net income summary Combine line 3, column (d), and line 10				55,364

**Part III Gaming.** Complete if the organization answered "Yes" to Form 990, Part IV, line 19, or reported more than \$15,000 on Form 990-EZ, line 6a.

		(a) Bingo	(b) Pull tabs/instant bingo/progressive bingo	(c) Other gaming	(d) Total gaming (add col (a) through col (c))
Revenue	1 Gross revenue				
Direct Expenses	2 Cash prizes				
	3 Noncash prizes				
	4 Rent/facility costs				
	5 Other direct expenses				
	6 Volunteer labor	<input type="checkbox"/> Yes <input type="checkbox"/> No %	<input type="checkbox"/> Yes <input type="checkbox"/> No %	<input type="checkbox"/> Yes <input type="checkbox"/> No %	
7 Direct expense summary Add lines 2 through 5 in column (d)					
8 Net gaming income summary Combine line 1, column d, and line 7					

9 Enter the state(s) in which the organization operates gaming activities

a Is the organization licensed to operate gaming activities in each of these states?

9a ☐ Yes ☐ No

b If "No," explain

10a Were any of the organization's gaming licenses revoked, suspended or terminated during the tax year?

10a ☐ Yes ☐ No

b If "Yes," explain

- 11** Does the organization operate gaming activities with nonmembers? ☐ Yes ☐ No
- 12** Is the organization a grantor, beneficiary or trustee of a trust or a member of a partnership or other entity formed to administer charitable gaming? ☐ Yes ☐ No
- 13** Indicate the percentage of gaming activity operated in
- |                                      |            |   |
|--------------------------------------|------------|---|
| <b>a</b> The organization's facility | <b>13a</b> | % |
| <b>b</b> An outside facility         | <b>13b</b> | % |
- 14** Enter the name and address of the person who prepares the organization's gaming/special events books and records

Name ►

Address ►

- 15a** Does the organization have a contract with a third party from whom the organization receives gaming revenue? ☐ Yes ☐ No
- b** If "Yes," enter the amount of gaming revenue received by the organization ► \$ and the amount of gaming revenue retained by the third party ► \$
- c** If "Yes," enter name and address of the third party

Name ►

Address ►

**16** Gaming manager information

Name ►

Gaming manager compensation ► \$

Description of services provided ►

☐ Director/officer
 ☐ Employee
 ☐ Independent contractor
**17** Mandatory distributions

- a** Is the organization required under state law to make charitable distributions from the gaming proceeds to retain the state gaming license? ☐ Yes ☐ No
- b** Enter the amount of distributions required under state law to be distributed to other exempt organizations or spent in the organization's own exempt activities during the tax year ► \$

**Part IV Supplemental Information.** Complete this part to provide the explanations required by Part I, line 2b, columns (iii) and (v), and Part III, lines 9, 9b, 10b, 15b, 15c, 16, and 17b, as applicable. Also complete this part to provide any additional information (see instructions).

**SCHEDULE O**  
**(Form 990 or 990-EZ)**Department of the Treasury  
Internal Revenue Service

Name of the organization

**Supplemental Information to Form 990 or 990-EZ**Complete to provide information for responses to specific questions on  
Form 990 or 990-EZ or to provide any additional information.

▶ Attach to Form 990 or 990-EZ.

OMB No. 1545-0047

**2010**Open to Public  
Inspection

Employer identification number

03-0354068

MT MANSFIELD WINTER ACADEMY, INC

Form 990, Part VI, Line 11b - Organization's Process to Review Form 990  
THE 990 IS REVIEWED BY THE EXECUTIVE DIRECTOR AND DOCUMENTS ARE AVAILABLE  
UPON REQUEST.

Form 990, Part VI, Line 19 - Governing Documents Disclosure Explanation  
THE ORGANIZATION MAKES GOVERNING AND FINANCIAL DOCUMENTS AVAILABLE ON  
REQUEST AND ARE KEPT IN THE ADMINISTRATION OFFICE.

Form

**4562**Department of the Treasury  
Internal Revenue Service

(99)

**Depreciation and Amortization**  
**(Including Information on Listed Property)**

OMB No 1545-0172

**2010**Attachment  
Sequence No **67**

▶ See separate instructions.

▶ Attach to your tax return.

Name(s) shown on return

MT MANSFIELD WINTER ACADEMY, INC

Identifying number

03-0354068

Business or activity to which this form relates

Indirect Depreciation

**Part I Election To Expense Certain Property Under Section 179****Note:** If you have any listed property, complete Part V before you complete Part I.

1	Maximum amount (see instructions)	1	500,000
2	Total cost of section 179 property placed in service (see instructions)	2	
3	Threshold cost of section 179 property before reduction in limitation (see instructions)	3	2,000,000
4	Reduction in limitation Subtract line 3 from line 2. If zero or less, enter -0-	4	
5	Dollar limitation for tax year Subtract line 4 from line 1. If zero or less, enter -0-. If married filing separately, see instructions	5	
6	(a) Description of property	(b) Cost (business use only)	(c) Elected cost
7	Listed property Enter the amount from line 29	7	
8	Total elected cost of section 179 property Add amounts in column (c), lines 6 and 7	8	
9	Tentative deduction Enter the smaller of line 5 or line 8	9	
10	Carryover of disallowed deduction from line 13 of your 2009 Form 4562	10	
11	Business income limitation Enter the smaller of business income (not less than zero) or line 5 (see instructions)	11	
12	Section 179 expense deduction Add lines 9 and 10, but do not enter more than line 11	12	
13	Carryover of disallowed deduction to 2011 Add lines 9 and 10, less line 12	13	

**Note:** Do not use Part II or Part III below for listed property. Instead, use Part V**Part II Special Depreciation Allowance and Other Depreciation (Do not include listed property.) (See instructions)**

14	Special depreciation allowance for qualified property (other than listed property) placed in service during the tax year (see instructions)	14	
15	Property subject to section 168(f)(1) election	15	
16	Other depreciation (including ACRS)	16	620

**Part III MACRS Depreciation (Do not include listed property.) (See instructions.)****Section A**

17	MACRS deductions for assets placed in service in tax years beginning before 2010	17	47,345
18	If you are electing to group any assets placed in service during the tax year into one or more general asset accounts, check here ▶		

**Section B—Assets Placed in Service During 2010 Tax Year Using the General Depreciation System**

(a) Classification of property	(b) Month and year placed in service	(c) Basis for depreciation (business/investment use only—see instructions)	(d) Recovery period	(e) Convention	(f) Method	(g) Depreciation deduction
19a 3-year property						
b 5-year property						
c 7-year property						
d 10-year property						
e 15-year property						
f 20-year property						
g 25-year property			25 yrs		S/L	
h Residential rental property			27 5 yrs	MM	S/L	
			27 5 yrs	MM	S/L	
i Nonresidential real property			39 yrs	MM	S/L	
				MM	S/L	

**Section C—Assets Placed in Service During 2010 Tax Year Using the Alternative Depreciation System**

20a Class life					S/L	
b 12-year			12 yrs		S/L	
c 40-year			40 yrs	MM	S/L	

**Part IV Summary (See instructions.)**

21	Listed property Enter amount from line 28	21	
22	Total. Add amounts from line 12, lines 14 through 17, lines 19 and 20 in column (g), and line 21 Enter here and on the appropriate lines of your return Partnerships and S corporations—see instructions	22	47,965
23	For assets shown above and placed in service during the current year, enter the portion of the basis attributable to section 263A costs	23	

For Paperwork Reduction Act Notice, see separate instructions.

Form **4562** (2010)

DAA

There are no amounts for Page 2

Forms <b>990 / 990-PF</b>	<b>Mortgages and Other Notes Payable</b>	<b>2010</b>
For calendar year 2010, or tax year beginning <u>05/01/10</u> , and ending <u>04/30/11</u>		
Name <u>MT MANSFIELD WINTER ACADEMY, INC</u>		Employer Identification Number <u>03-0354068</u>

Form 990, Part X, Line 23 - Additional Information

Name of lender	Relationship to disqualified person
(1) TD BANKNORTH	NONE
(2)	
(3)	
(4)	
(5)	
(6)	
(7)	
(8)	
(9)	
(10)	

Original amount borrowed	Date of loan	Maturity date	Repayment terms	Interest rate
(1) 1,250,000	10/21/05	11/01/30	MONTHLY PMTS OF \$8,068.36	6.000
(2)				
(3)				
(4)				
(5)				
(6)				
(7)				
(8)				
(9)				
(10)				

Security provided by borrower	Purpose of loan
(1) BUILDING	PURCHASE BUILDING
(2)	
(3)	
(4)	
(5)	
(6)	
(7)	
(8)	
(9)	
(10)	

Consideration furnished by lender	Balance due at beginning of year	Balance due at end of year
(1)	1,145,097	1,118,575
(2)		
(3)		
(4)		
(5)		
(6)		
(7)		
(8)		
(9)		
(10)		
Totals	1,145,097	1,118,575

Year Ended: April 30, 2011

03-0354068

MT MANSFIELD WINTER ACADEMY, INC  
PO BOX 3269  
STOWE, VT 05672

**Electing out of Bonus Depreciation Allowance for  
All Eligible Depreciable Property**

The taxpayer elects out of first-year bonus depreciation allowance under IRC Section 168(k) for all eligible asset classes of depreciable property acquired after December 31, 2007. This election applies to all eligible depreciable property placed in service during the tax year.

## Federal Asset Report

FYE: 4/30/2011

Form 990, Page 1

Asset	Description	Date In Service	Cost	Bus %	Sec 179	Bonus	Basis for Depr	PerConv Meth	Prior	Current
<b>Prior MACRS:</b>										
3	BUILDING	10/21/05	1,430,460				1,430,460	39 MMS/L	148,242	36,679
5	EQUIPMENT	10/21/05	50,000				50,000	7 MQ200DB	36,613	5,267
6	LAB EQUIPMENT VENTHOOD	3/07/07	2,342				2,342	7 HY 200DB	1,562	223
7	BOILER	3/06/06	3,935				3,935	15 HY 150DB	1,305	263
8	WASHER & DRYER	12/21/06	2,650				2,650	5 HY 200DB	2,141	305
9	SIGN	12/01/06	3,673				3,673	7 HY 200DB	2,449	350
10	BUILDING IMPROVEMENT KITCHEN I	5/20/08	2,343				2,343	39 MMS/L	118	60
11	SPIN BIKE	1/10/08	2,000		X		1,000	7 HY 200DB	1,534	133
12	POTTERT VENT	11/27/07	1,788				1,788	7 HY 200DB	954	238
13	2 REFRIGERATORS	11/27/07	2,490				2,490	5 HY 200DB	1,693	319
14	3 COMPUTERS	2/07/08	5,960		X		2,980	5 HY 200DB	5,006	382
15	FURNITURE AND EQUIPMENT	11/01/07	4,492				4,492	7 HY 200DB	2,397	598
16	LAND IMPROVEMENTS	4/02/09	16,728				16,728	15 HY 150DB	2,300	1,443
17	COMPUTER	7/08/09	1,328				1,328	5 HY 200DB	266	425
18	LAND IMPROVEMENTS	11/12/09	6,946				6,946	15 HY 150DB	347	660
			<u>1,537,135</u>				<u>1,533,155</u>		<u>206,927</u>	<u>47,345</u>
<b>Other Depreciation:</b>										
1	CHEVY SUBURBAN	1/07/02	21,465				21,465	5 MO S/L	21,465	0
4	LAND	10/21/05	75,190				75,190	0 -- Land	0	0
19	CHALET #2 BOILER	4/20/11	43,420				43,420	39 MO S/L	0	0
20	PAVING	11/22/10	13,050				13,050	15 MO S/L	0	363
21	COMPUTER (LORI)	10/12/10	2,203				2,203	5 MO S/L	0	257
	<b>Total Other Depreciation</b>		<u>155,328</u>				<u>155,328</u>		<u>21,465</u>	<u>620</u>
	<b>Total ACRS and Other Depreciation</b>		<u>155,328</u>				<u>155,328</u>		<u>21,465</u>	<u>620</u>
	<b>Grand Totals</b>		1,692,463				1,688,483		228,392	47,965
	<b>Less: Dispositions and Transfers</b>		0				0		0	0
	<b>Less: Start-up/Org Expense</b>		0				0		0	0
	<b>Net Grand Totals</b>		<u>1,692,463</u>				<u>1,688,483</u>		<u>228,392</u>	<u>47,965</u>



**Federal Statements**

FYE: 4/30/2011

**Taxable Interest on Investments**

Description	Amount	Unrelated Business Code	Exclusion Code	Postal Code	Acquired after 6/30/75	US Obs (\$ or %)
	\$ 5		14			
Total	\$ <u>5</u>					

**Form 990, Part IX, Line 24f - All Other Expenses**

Description	Total Expenses	Program Service	Management & General	Fund Raising
PAYROLL FEES	\$ 2,339	\$ 1,669	\$ 670	\$
STUDENT ACTIVITIES	2,110	2,110		
TRAINING TRIP	989	989		
Total	\$ <u>5,438</u>	\$ <u>4,768</u>	\$ <u>670</u>	\$ <u>0</u>

IS COUPON

14-8974

18 holes \$58

Additional

Ride!

Trail

n  
all Abilities

s  
r Hiking or  
ass

ental Fleet  
Shop

dge  
Runs

ace ~ 6:15 pm  
pm)

August 31st

ren,  
s,

through woods &  
s 2,400 acre resort.  
Walkers welcome.

f 12 runs).  
der 12 years of age  
ests.

dge

v.trappfamily.com

# MT. MANSFIELD WINTER ACADEMY

Presents:



**September 5th, 2010**

Challenging terrain with extraordinary surroundings,  
the routes will wind through Stowe and Morrisville with the longest  
ride taking participants up and over Smugglers' Notch!  
Aid stations and support vehicles along all routes.

**Entry includes: Pre-ride food, after ride meal,  
route support and tech shirt!**

Pre-start energy supplies include fresh fruit, bagels and juice  
Refuel meal provided by CARBECUE -  
Great menu with pulled pork, chicken and salads.

**3 routes: 25/50/75**

Bike Rodeo for those 12 and under.

Staggered start times: 8 am, 9:30 am & 11 am. Rodeo starts at 11 am.

[www.mmwa.org](http://www.mmwa.org)

**CHARTIS**

*Presented by*

 **KeyBank**

  
**GREEN  
MOUNTAIN  
POWER**

**YOU CAN GET HERE FROM THERE  
STOWETODAY.COM**

Cross-country: Monday-Friday at 5 p.m. at the high school.

• Stowe Middle School sports will begin with an informational meeting for all sports on Monday, Aug. 30, in the school cafeteria, directly after classes. All athletes and their parents are encouraged to attend.

More information about practice schedules will be provided at the meeting.

The Vermont Voltage Soccer Club held an intensive camp last week at Peoples Academy in Morrisville.

The Voltage is a member of the United Soccer League, part of the Premier Development League that has 63 teams across the nation.

The camp directors were both graduates of Peoples Academy and current Voltage players.

sonal-best times, led by Abby Nicholson with 16.

Stowe Swimmers will be back in the water Sept. 7.

Top five results by age group at the state championships.

#### Age 8 and under

Reade Lawson, 8 100 individual medley, 4th, 25 backstroke, 4th, 25 butterfly, 4th, 50 freestyle, 3rd, 200 freestyle relay, 1st

#### Age 11 and 12

Seychelle Duckworth, 12 100 butterfly, 1st  
Megan Gresham, 12 50 butterfly, 5th, 100 butter-

3rd  
Reade Lawson  
25 freestyle, 1  
200 freestyle  
Alex McNabb,  
stroke, 1st, 25  
200 medley re  
**Age 9 and 11**  
Heidi Brynn  
3rd, 25 freest  
butterfly, 2nd,  
Nicole McNab  
2nd, 25 freest  
freestyle, 2nd,

## MT. MANSFIELD WINTER ACADEMY *Presents:*



### September 5th, 2010

Challenging terrain with extraordinary surroundings, the routes will wind through Stowe and Morrisville with the longest ride taking participants up and over Smugglers' Notch!

Aid stations and support vehicles along all routes.

**Entry includes: Pre-ride food, after ride meal, route support and tech shirt!**

Pre-start energy supplies include fresh fruit, bagels and juice

Refuel meal provided by CARBECUE -

Great menu with pulled pork, chicken and salads.

**3 routes: 25/50/75**

Bike Rodeo for those 12 and under.

Staggered start times: 8 am, 9:30 am & 11 am. Rodeo starts at 11 am.

[www.mmwa.org](http://www.mmwa.org)



#### Great p

Eastern Bk  
Transition  
Redline  
Yeti  
Gary Fisher  
Raleigh ...a

Morrisv

B

S

F  
PA  
SO  
with  
p

T

# PLANNING A PROJECT?

## • WE CAN HELP



### Specializing in :

- Septic Designs
- Surveying
- Land Planning
- State & Local Permitting
- Act 250 Permitting
- Subdivisions

A local company celebrating our 20th year of providing Engineering, Surveying, and Land Use Permitting Services.



**McCain Consulting, Inc.**

93 South Main Street, Suite 1 • Waterbury, Vt 05676  
(802)244-5093 Tel. • (802)244-7492 Fax

## SAT PREP CLASS

AT

### MT. MANSFIELD WINTER ACADEMY

**G**ain a competitive edge this summer with an intensive study skills course geared for high school students preparing for the SAT. Learn from Academy teachers, Nancy Paul (math) & Bob St. Pierre (english). Instruction will include test-taking strategies and subject specific review.

- Gain skills and techniques to quickly solve math problems in Algebra & Geometry.
- Increase vocabulary, improve writing & grammar skills and enhance reading comprehension.

Session Dates  
August 16, 17, 18, 19 & 20

Class times are in the evenings, 6 - 8 pm. for the first 2 classes, then 6 - 7:30 pm for the remaining 3 classes.  
Fee is \$275 for each session of 5 classes

For more information or to register, contact MMWA at 802.253.7409 x 300 or [mmwa@mt-mansfield.com](mailto:mmwa@mt-mansfield.com)



immature scarlet tanagers feed in a grove of cherry trees. Not until I started breaking out the morphological characteristics (get to the correct page in the Peterson field guide. Focusing the obvious plumage can be a liability, especially for juvenile young-of-the-year birds.

Last year, I was on the Atlantic coast several times and had the opportunity to watch a large group of sanderlings feeding along the beach at low tide. The group was a hodgepodge of juvenile and adult in eclipse plumage, which, for a



Splash in  
at the l



Open daily

- Outdoor Science Park • ViewSp
- Daily programs and activities •
- Permanent and visiting exhibits

Present this coupon

**10% off admission**  
for everyone in your group

Not valid with other discounts or promotions

[www.montshire.org](http://www.montshire.org)



Daylilies  
Galore!

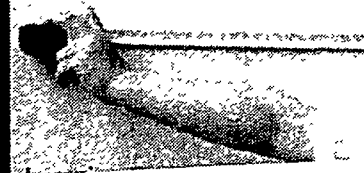
## Open Garden

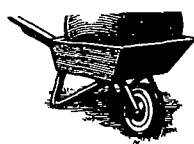
More than 2400 Daylilies and 800 Hostas

Weekend Viewing and Sale

August 14-15

Your Child's  
Stern Collection





**h a r v e s t  
m a r k e t**

❖ Must be willing to work through foliage season.

❖ 3 day/week bakers assistant opening  
Stop by and get an application.

**Work in a great place with fantastic people!**  
1031 MOUNTAIN ROAD



## MT. MANSFIELD WINTER ACADEMY

A private independent school that  
emphasizes quality academics & athletics  
for students in grades 8-12.

**Director of Development - MMWA** is seeking an individual to fill the position of director of development and marketing. Responsibilities include advertising, fundraising, communication with parents and community, event planning and website management. Applicant must have excellent writing skills, a working knowledge of aspects of fundraising, be technology savvy, have the ability to multi-task and be familiar with the snow-sport competition scene. This is a part-time position with the bulk of the time requirement coming in the fall and winter.

Please send letter of interest and resume to:

MMWA, PO Box 3269, Stowe, VT or email - mmwa@mt-mansfield.com

## MIGRANT EDUCATION TEACHER

NORTHEAST KINGDOM LEARNING SERVICES, INC. (NEKLS) IS LOOKING FOR A MOTIVATED, ENTHUSIASTIC EDUCATOR INTERESTED IN JOINING THE NEK MIGRANT EDUCATION PROGRAM

APPLICANTS MUST HAVE A BACHELOR'S DEGREE, PRIOR EXPERIENCE PREFERRED. THIS PROGRAM SERVES STUDENTS OF ALL AGES AND GRADE LEVELS. WE ARE CURRENTLY SEEKING AN EDUCATOR TO SERVE STUDENTS IN CALEDONIA, LAMOILLE AND ORANGE COUNTIES. MOST ASSIGNMENTS ARE FOR SCHOOL APPROVED INDIVIDUAL ACADEMIC TUTORIALS GENERALLY SITED AT THE SCHOOL OR THE STUDENT'S HOME.

THIS IS A PART-TIME POSITION WITH AT LEAST 20 HOURS PER WEEK OF INSTRUCTION. A BACKGROUND CHECK IS REQUIRED. FOR MORE INFORMATION PLEASE CALL JULIE AT 802-334-6532 AA/EOE

NEKLS IS AN EQUAL OPPORTUNITY/AFFIRMATIVE ACTION EMPLOYER

sq.ft. condo. \$2200 p  
no pets, nonsmoki  
contact Bob at 802-27

## FOR RENT APARTMENT

\$1200 CLEAN, 1st FLOOR, 2 BR, painted, bright, newly with granite counter bar, new appliance includes all utilities: plowing, yard maintenance, cable on one TV. No and no pets. W/D a \$15/mo, each  
pagoda238@hotmail.c

1 BEDROOM APARTMENT, Skylight, full bath, parking, trash removal. No pets, nonsmoking. First, last and security 9600.

1 BEDROOM Lower Bright with skylights outdoor deck. Kitchen cabinets, new flooring, carpet \$650 No pets 7728.

1 BEDROOM PLUS DR IN NEW HOUSE, bath, DW, Sat. TV, gas fireplace, separate great location near Village Parking, playground area, yard, garden super views. Nonsmoking, pets, references

# K

Growing Drug Chain, since 1990  
**Pharmacy Staff** including Pharmacy Technician, customer service oriented and possess strong computer/data skills

**To apply:** Drop off or mail application to Kinney Drugs, Inc., 80 South Main Street, to be submitted online through our website

## Lamoille Community Connections

is a designated provider of developmental and mental health services, now celebrating 40+ years of services to the Lamoille County community.

We currently have the following opportunities available:

DEVELOPMENTAL TUTORING OPPORTUNITIES

## How can U.S. afford compulsory draft?

To the Editor:

It has come to my attention that there is a bill going through Congress that is related to involuntary conscription (H.R. 5741)

This just feeds the fears that the government is marching toward unprecedented areas of intrusion into our daily lives.

If the federal government has the budget for this, then let's figure out how much that is and lobby instead to get a piece of it for Vermont

Dayle Lafoy  
Waterbury


- Spacious Units (approx 1,100 sq feet)
- Access to Copley Hospital's Services
- Independence
- Dining Service
- Security

*"Living at Copley Woodlands is like living in a fine Inn."*

— Florence Taylor, Resident

**Call us today...(802) 253-7200**

125 Thomas Lane, Stowe, Vermont

A part of  
Copley Health Systems 

**WAI**  
SYSTEMS

**ASTHMA**

**See the**



**William**

- 654 Granger Road  
802-229-1626
- 260 Crest Rd., St. Albans  
802-524-2550

## MT. MANSFIELD WINTER ACADEMY Presents:



**September 5th, 2010**

Challenging terrain with extraordinary surroundings,  
the routes will wind through Stowe and Morrisville with the longest  
ride taking participants up and over Smugglers' Notch!

Aid stations and support vehicles along all routes.

**Entry includes: Pre-ride food, after ride meal,  
route support and tech shirt!**

Pre-start energy supplies include fresh fruit, bagels and juice

Refuel meal provided by CARBECUE -

Great menu with pulled pork, chicken and salads.

**3 routes: 25/50/75**

Bike Rodeo for those 12 and under.

Staggered start times: 8 am, 9:30 am & 11 am. Rodeo starts at 11 am.

**GREEN**  
**ARAGE**

- 1973 Datsun 240Z Coupe
- 2007 Toyota Prius 4dr. S
- 2007 Toyota Prius 4dr. H
- 2004 Toyota Tacoma 4wc
- 2004 Toyota Corolla CE 4
- 2003 Toyota Tacoma XCa
- 2006 Subaru Impreza i 4d
- 2005 Subaru Legacy OBi
- 2005 Subaru Legacy OB
- 2004 Subaru Legacy OB
- 2004 Subaru Legacy OB
- 2004 Subaru Legacy L W
- 2003 Subaru Forester XS
- 2000 Subaru Legacy OB
- 2000 Subaru Forester L V
- 2000 Subaru Legacy Brig
- 1999 Subaru Legacy OB
- 1998 Subaru OB Ltd. Wag
- 1996 Olds Cutlass St. Man

# SEPTIC PROBLEMS?

## WE CAN HELP

Full Septic Solutions :

- Free Site Visit and Preliminary Evaluation
- Replacement System Designs
- State Wastewater Permitting



A local company celebrating our 20th year of providing Engineering, Surveying, and Land Use Permitting Services.



**McCain Consulting, Inc.**

[www.mccainconsulting.com](http://www.mccainconsulting.com)

93 South Main Street, Suite 1 • Waterbury, Vt 05676  
(802)244-5093 Tel. • (802)244-7492 Fax

## SAT PREP CLASS

AT

### MT. MANSFIELD WINTER ACADEMY

**G**ain a competitive edge this summer with an intensive study skills course geared for high school students preparing for the SAT

Learn from Academy teachers, Nancy Paul (math) & Bob St Pierre (english)

Instruction will include test-taking strategies and subject specific review

- Gain skills and techniques to quickly solve math problems in Algebra & Geometry.
- Increase vocabulary, improve writing & grammar skills and enhance reading comprehension.

Session Dates

August 16, 17, 18, 19 & 20

Class times are in the evenings, 6 - 8 pm for the first 2 classes, then 6 - 7 30 pm for the remaining 3 classes

Fee is \$275 for each session of 5 classes.

For more information or to register, contact MMWA at 802.253.7409 x 300 or [mmwa@mt-mansfield.com](mailto:mmwa@mt-mansfield.com)



ago exclusively for lodge guests. Opening up for paid access to guests "was just a response to it from locals and mountain ers," he said

With about 30 miles of sin and double-track trails, the Tra center is smaller than the two o mountain biking centers in this j of Vermont, Kingdom Trails in E Burke and Millstone Trails Websterville.

But Trapps plans contin expansion of its facility and is ge ing its network toward all lev with a broad network for beginne The center also offers rentals, l sons, and bike repair and main nance.

Drew Clymer, an avid cycl from Stowe with two daughte ages 11 and 14, said the beginn trails and pervasive signage we among the selling points.

"It is just an ideal place for n kids to develop a comfort level wi mountain biking and enjoy it," l said.

Clymer also wants to suppo growing outdoor businesses i town

"Anyone who's willing to inve that kind of money and infrastruc ture into the town, I want to suppo that."

The mountain biking idea was logical addition for Trapps. Long known as a Nordic skiing mecca — it was among the first Nordic cen ters in the nation and remains a standard-setter in the field, one o the few with snowmaking — and a naturalists' haven, the rolling Trapps land was largely quiet and unused in the warmer months.

Enter Christina and Sam von Trapp, who both returned to live in the area within the last few years. Once they persuaded their famously environmentally careful father that new mountain-bike-trail building techniques were OK, trail building began. The network is being designed by Hardy Avery, a local

## SADDLE UP



**Edson Hill Manor Trail Rides**

## UMIAK'S M KAYAK & S CANOE S

**NOW THROUGH SUNDAY,  
ALL NEW  
BOATS IN  
STOCK  
ON SALE!**

# JUMPSTART YOUR WINTER SEASON WITH MMWA & MMSC



- INDIVIDUALIZED INSTRUCTION
- RENOWNED COACHING
- CLOSE-KNIT COMMUNITY
- EXCELLENT COLLEGE ACCEPTANCE RECORD



MT MANSFIELD WINTER ACADEMY  
WWW.MMWA.ORG



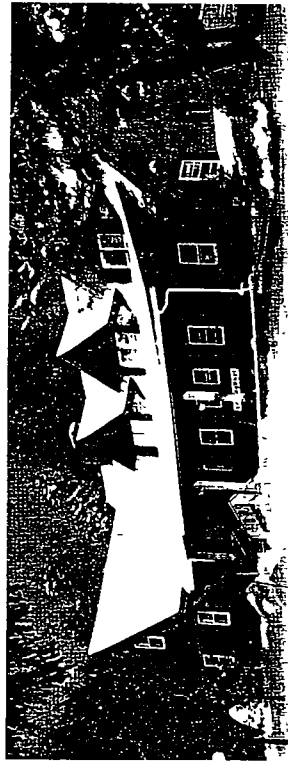
STOWE, VERMONT

MT MANSFIELD SKI & SNOWBOARD CLUB  
WWW.TEAMMMSC.ORG

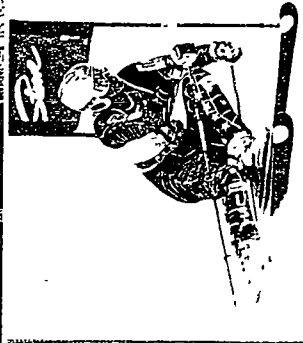
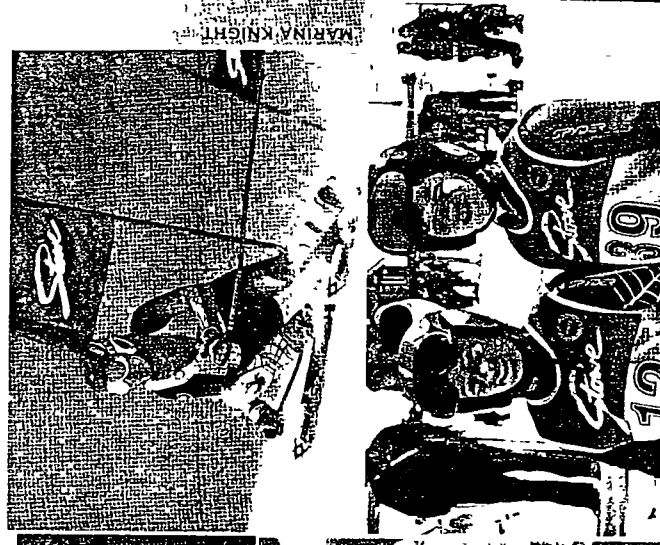




MT. MANSFIELD WINTER ACADEMY  
WWW.MMWA.ORG



MT. MANSFIELD SKI & SNOWBOARD CLUB  
WWW.TEAMMMSC.ORG



STOWE, VERMONT

# WE PUT YOUR GOALS WITHIN REACH...

\* INDIVIDUALIZED INSTRUCTION \* RENOWNED COACHING \* CLOSE-KNIT COMMUNITY \* EXCELLENT COLLEGE ACCEPTANCE RECORD

**JOIN US FOR A CONCENTRATED  
TRAINING & ACADEMIC SESSION  
THIS DECEMBER 2-23, 2009**

- ✿ Study in the morning with our highly qualified teachers
- ✿ Train with Mt. Mansfield Ski & Snowboard Club coaches on the best terrain in the East
- ✿ Establish a dryland fitness program to continue at home
- ✿ Experience Academy living in our comfortable & safe dorms

Stay current with your school's academics while you gain on-mountain experience to advance you through the rest of your season with a new competitive edge.

**Open to all 8th, 9th & 10th grade J3 Alpine,  
Free Ride & Snowboard Student-Athletes**

Visit our web site ([www.mmwa.org](http://www.mmwa.org)) for more details or call for information (802.253.7409)



**You'll be glad to have the  
JumpStart Advantage this season!**



**MT. MANSFIELD  
WINTER ACADEMY**  
P.O. Box 3269,  
STOWE, VT 05672  
[WWW.MMWA.ORG](http://WWW.MMWA.ORG)

Non Profit Org.  
US Postage  
PAID  
Stowe, Vermont  
05672  
Permit No. 3269