



See a Social Security Number? Say Something!
Report Privacy Problems to <https://public.resource.org/privacy>
Or call the IRS Identity Theft Hotline at 1-800-908-4490



Return of Organization Exempt From Income Tax

Under section 501(c), 527, or 4947(a)(1) of the Internal Revenue Code (except black lung benefit trust or private foundation)

Open to Public Inspection

Department of the Treasury
Internal Revenue Service

▶ The organization may have to use a copy of this return to satisfy state reporting requirements

A For the 2010 calendar year, or tax year beginning , and ending

B Check if applicable:
 Address change
 Name change
 Initial return
 Terminated
 Amended return
 Application pending

C Name of organization Intercommunity Cable Regulatory Commission of SW
Doing Business As
Number and street (or P O box if mail is not delivered to street address) 2492 Commodity Circle
Room/suite
City or town, state or country, and ZIP + 4 Cincinnati OH 45241-1556

D Employer identification number 31-1005731
E Telephone number (513) 772-4272
G Gross receipts \$ 803,783

F Name and address of principal officer
Patricia Stern 2492 Commodity Circle, Cincinnati, OH 45241

H(a) Is this a group return for affiliates? Yes No
H(b) Are all affiliates included? Yes No
 If "No," attach a list (see instructions)

I Tax-exempt status 501(c)(3) 501(c) (4) ◀ (insert no) 4947(a)(1) or 527

J Website: ▶ www.icrctv.com

K Form of organization Corporation Trust Association Other ▶ **L Year of formation** 1983 **M State of legal domicile** OH

H(c) Group exemption number ▶

Part I Summary

Activities & Governance	1 Briefly describe the organization's mission or most significant activities: <u>The organization is a regional council of governments to which its members pay part of their franchise fees to have community events, sports, governmental meetings and etc produced on cable television in an effort to reach out and communicate with the residents that the member communities represent See</u>		
	2 Check this box <input type="checkbox"/> if the organization discontinued its operations or disposed of more than 25% of its net assets		
	3 Number of voting members of the governing body (Part VI, line 1a)	3	<u>26</u>
	4 Number of independent voting members of the governing body (Part VI, line 1b)	4	<u>26</u>
	5 Total number of individuals employed in calendar year 2010 (Part V, line 2a)	5	<u>10</u>
	6 Total number of volunteers (estimate if necessary)	6	<u>205</u>
	7a Total unrelated business revenue from Part VIII, column (C), line 12	7a	<u>0</u>
b Net unrelated business taxable income from Form 990-T, line 34	7b	<u>0</u>	
Revenue	8 Contributions and grants (Part VIII, line 1h)	Prior Year	Current Year
	9 Program service revenue (Part VIII, line 2g)	<u>805,059</u>	<u>795,129</u>
	10 Investment income (Part VIII, column (A), lines 3, 4, and 7d)	<u>0</u>	<u>0</u>
	11 Other revenue (Part VIII, column (A), lines 5, 6d, 8c, 9c, 10c, and 11e)	<u>2,070</u>	<u>652</u>
	12 Total revenue—add lines 8 through 11 (must equal Part VIII, column (A), line 12)	<u>815,399</u>	<u>803,783</u>
	Expenses	13 Grants and similar amounts paid (Part IX, column (A), lines 1–3)	<u>0</u>
14 Benefits paid to or for members (Part IX, column (A), line 4)		<u>0</u>	<u>0</u>
15 Salaries, other compensation, employee benefits (Part IX, column (A), lines 5–10)		<u>580,353</u>	<u>599,057</u>
16a Professional fundraising fees (Part IX, column (A), line 11e)		<u>0</u>	<u>0</u>
b Total fundraising expenses (Part IX, column (D), line 25) ▶		<u>0</u>	<u>0</u>
17 Other expenses (Part IX, column (A), lines 11a–11d, 11f–24f)		<u>440,860</u>	<u>396,344</u>
18 Total expenses. Add lines 13–17 (must equal Part IX, column (A), line 25)	<u>1,021,213</u>	<u>995,401</u>	
19 Revenue less expenses. Subtract line 18 from line 12	<u>-205,814</u>	<u>-191,618</u>	
Net Assets or Fund Balances	20 Total assets (Part X, line 16)	Beginning of Current Year	End of Year
	21 Total liabilities (Part X, line 26)	<u>1,564,813</u>	<u>1,374,471</u>
	22 Net assets or fund balances Subtract line 21 from line 20	<u>6,655</u>	<u>7,931</u>
		<u>1,558,158</u>	<u>1,366,540</u>

Part II Signature Block

Under penalties of perjury, I declare that I have examined this return, including accompanying schedules and statements, and to the best of my knowledge and belief, it is true, correct, and complete. Declaration of preparer (other than officer) is based on all information of which preparer has any knowledge.

Sign Here
 Signature of officer: [Signature] Date: 5/13/12/11
 Patricia Stern Executive Director
 Type or print name and title

Paid Preparer's Use Only
 Print/Type preparer's name: WILLIAM MORAND Preparer's signature: [Signature] Date: 5/12/2011 Check if self-employed PTIN:
 Firm's name: WILLIAM B. MORAND, CPA Firm's EIN:
 Firm's address: 3363 ST. GEORGES WAY, LOVELAND, OH 45140 Phone no: (513) 683-5981

May the IRS discuss this return with the preparer shown above? (see instructions) Yes No

SCANNED JUN 15 2011

120

Part III

Statement of Program Service Accomplishments

Check if Schedule O contains a response to any question in this Part III

1 Briefly describe the organization's mission

The organization is a regional council of governments. The members pay part of their local area cable franchise fees to have cable access. They record community events, sports, governmental meetings and many other community productions for showing on cable TV. Through local cable access, the communities reach out to their residents.

2 Did the organization undertake any significant program services during the year which were not listed on the prior Form 990 or 990-EZ?

Yes No

If "Yes," describe these new services on Schedule O

3 Did the organization cease conducting, or make significant changes in how it conducts, any program services?

Yes No

If "Yes," describe these changes on Schedule O.

4 Describe the exempt purpose achievements for each of the organization's three largest program services by expenses. Section 501(c)(3) and 501(c)(4) organizations and section 4947(a)(1) trusts are required to report the amount of grants and allocations to others, the total expenses, and revenue, if any, for each program service reported.

4a (Code.) (Expenses \$ 472,343 including grants of \$ 0) (Revenue \$ 0)

Local community television programing including sporting events, government council and board meetings, community events and many other events and happenings within the local communities such as parades, festivals and dance recitals. The Organization's funding for this service comes from the member communitis so the residents are not charged.

4b (Code.) (Expenses \$ 150,453 including grants of \$ 0) (Revenue \$ 0)

The Organization negotiates franchise agreements for the member organizations and keeps the local communities informed to changing regulations. The organization acts as a consumer advocate by supporting member community residents when they have problems with the cable service from the cable companys. The Organization's funding comes from the member communities franchise fees.

4c (Code.) (Expenses \$ 234,000 including grants of \$ 0) (Revenue \$ 0)

The Organization trains volunteers to use video equipment, supports the local schools with video support and applys its resources to enable cable access for the participating communities. The Organization's funding for this service comes from the member communities franchise fees.

4d Other program services. (Describe in Schedule O.)

(Expenses \$ 138,605 including grants of \$ 0) (Revenue \$ 0)

4e Total program service expenses ▶ 995,401

Part IV Checklist of Required Schedules

	Yes	No
1 Is the organization described in section 501(c)(3) or 4947(a)(1) (other than a private foundation)? <i>If "Yes," complete Schedule A</i>		X
2 Is the organization required to complete Schedule B, Schedule of Contributors? (see instructions)		X
3 Did the organization engage in direct or indirect political campaign activities on behalf of or in opposition to candidates for public office? <i>If "Yes," complete Schedule C, Part I</i>		X
4 Section 501(c)(3) organizations. Did the organization engage in lobbying activities, or have a section 501(h) election in effect during the tax year? <i>If "Yes," complete Schedule C, Part II</i>		
5 Is the organization a section 501(c)(4), 501(c)(5), or 501(c)(6) organization that receives membership dues, assessments, or similar amounts as defined in Revenue Procedure 98-19? <i>If "Yes," complete Schedule C, Part III</i>		X
6 Did the organization maintain any donor advised funds or any similar funds or accounts where donors have the right to provide advice on the distribution or investment of amounts in such funds or accounts? <i>If "Yes," complete Schedule D, Part I</i>		X
7 Did the organization receive or hold a conservation easement, including easements to preserve open space, the environment, historic land areas, or historic structures? <i>If "Yes," complete Schedule D, Part II</i>		X
8 Did the organization maintain collections of works of art, historical treasures, or other similar assets? <i>If "Yes," complete Schedule D, Part III</i>		X
9 Did the organization report an amount in Part X, line 21; serve as a custodian for amounts not listed in Part X; or provide credit counseling, debt management, credit repair, or debt negotiation services? <i>If "Yes," complete Schedule D, Part IV</i>		X
10 Did the organization, directly or through a related organization, hold assets in term, permanent, or quasi-endowments? <i>If "Yes," complete Schedule D, Part V</i>		X
11 If the organization's answer to any of the following questions is "Yes," then complete Schedule D, Parts VI, VII, VIII, IX, or X as applicable		
a Did the organization report an amount for land, buildings, and equipment in Part X, line 10? <i>If "Yes," complete Schedule D, Part VI</i>	X	
b Did the organization report an amount for investments—other securities in Part X, line 12 that is 5% or more of its total assets reported in Part X, line 16? <i>If "Yes," complete Schedule D, Part VII</i>		X
c Did the organization report an amount for investments—program related in Part X, line 13 that is 5% or more of its total assets reported in Part X, line 16? <i>If "Yes," complete Schedule D, Part VIII</i>		X
d Did the organization report an amount for other assets in Part X, line 15 that is 5% or more of its total assets reported in Part X, line 16? <i>If "Yes," complete Schedule D, Part IX</i>		X
e Did the organization report an amount for other liabilities in Part X, line 25? <i>If "Yes," complete Schedule D, Part X</i>		X
f Did the organization's separate or consolidated financial statements for the tax year include a footnote that addresses the organization's liability for uncertain tax positions under FIN 48 (ASC 740)? <i>If "Yes," complete Schedule D, Part X</i>		X
12a Did the organization obtain separate, independent audited financial statements for the tax year? <i>If "Yes," complete Schedule D, Parts XI, XII, and XIII</i>		X
b Was the organization included in consolidated, independent audited financial statements for the tax year? <i>If "Yes," and if the organization answered "No" to line 12a, then completing Schedule D, Parts XI, XII, and XIII is optional</i>		X
13 Is the organization a school described in section 170(b)(1)(A)(ii)? <i>If "Yes," complete Schedule E</i>		X
14a Did the organization maintain an office, employees, or agents outside of the United States?		X
b Did the organization have aggregate revenues or expenses of more than \$10,000 from grantmaking, fundraising, business, and program service activities outside the United States? <i>If "Yes," complete Schedule F, Parts I and IV</i>		X
15 Did the organization report on Part IX, column (A), line 3, more than \$5,000 of grants or assistance to any organization or entity located outside the United States? <i>If "Yes," complete Schedule F, Parts II and IV</i>		X
16 Did the organization report on Part IX, column (A), line 3, more than \$5,000 of aggregate grants or assistance to individuals located outside the United States? <i>If "Yes," complete Schedule F, Parts III and IV</i>		X
17 Did the organization report a total of more than \$15,000 of expenses for professional fundraising services on Part IX, column (A), lines 6 and 11e? <i>If "Yes," complete Schedule G, Part I (see instructions)</i>		X
18 Did the organization report more than \$15,000 total of fundraising event gross income and contributions on Part VIII, lines 1c and 8a? <i>If "Yes," complete Schedule G, Part II</i>		X
19 Did the organization report more than \$15,000 of gross income from gaming activities on Part VIII, line 9a? <i>If "Yes," complete Schedule G, Part III</i>		X
20a Did the organization operate one or more hospitals? <i>If "Yes," complete Schedule H</i>		X
b If "Yes" to line 20a, did the organization attach its audited financial statements to this return? Note. Some Form 990 filers that operate one or more hospitals must attach audited financial statements (see instructions)		X

Part IV Checklist of Required Schedules (continued)

	Yes	No
21 Did the organization report more than \$5,000 of grants and other assistance to governments and organizations in the United States on Part IX, column (A), line 1? <i>If "Yes," complete Schedule I, Parts I and II</i>		X
22 Did the organization report more than \$5,000 of grants and other assistance to individuals in the United States on Part IX, column (A), line 2? <i>If "Yes," complete Schedule I, Parts I and III</i>		X
23 Did the organization answer "Yes" to Part VII, Section A, line 3, 4, or 5 about compensation of the organization's current and former officers, directors, trustees, key employees, and highest compensated employees? <i>If "Yes," complete Schedule J</i>		X
24a Did the organization have a tax-exempt bond issue with an outstanding principal amount of more than \$100,000 as of the last day of the year, that was issued after December 31, 2002? <i>If "Yes," answer lines 24b through 24d and complete Schedule K. If "No," go to line 25</i>		X
b Did the organization invest any proceeds of tax-exempt bonds beyond a temporary period exception?		X
c Did the organization maintain an escrow account other than a refunding escrow at any time during the year to defease any tax-exempt bonds?		X
d Did the organization act as an "on behalf of" issuer for bonds outstanding at any time during the year?		X
25a Section 501(c)(3) and 501(c)(4) organizations. Did the organization engage in an excess benefit transaction with a disqualified person during the year? <i>If "Yes," complete Schedule L, Part I</i>		X
b Is the organization aware that it engaged in an excess benefit transaction with a disqualified person in a prior year, and that the transaction has not been reported on any of the organization's prior Forms 990 or 990-EZ? <i>If "Yes," complete Schedule L, Part I</i>		X
26 Was a loan to or by a current or former officer, director, trustee, key employee, highly compensated employee, or disqualified person outstanding as of the end of the organization's tax year? <i>If "Yes," complete Schedule L, Part II</i>		X
27 Did the organization provide a grant or other assistance to an officer, director, trustee, key employee, substantial contributor, or a grant selection committee member, or to a person related to such an individual? <i>If "Yes," complete Schedule L, Part III</i>		X
28 Was the organization a party to a business transaction with one of the following parties (see Schedule L, Part IV instructions for applicable filing thresholds, conditions, and exceptions)		
a A current or former officer, director, trustee, or key employee? <i>If "Yes," complete Schedule L, Part IV</i>		X
b A family member of a current or former officer, director, trustee, or key employee? <i>If "Yes," complete Schedule L, Part IV</i>		X
c An entity of which a current or former officer, director, trustee, or key employee (or a family member thereof) was an officer, director, trustee, or direct or indirect owner? <i>If "Yes," complete Schedule L, Part IV</i>		X
29 Did the organization receive more than \$25,000 in non-cash contributions? <i>If "Yes," complete Schedule M</i>		X
30 Did the organization receive contributions of art, historical treasures, or other similar assets, or qualified conservation contributions? <i>If "Yes," complete Schedule M</i>		X
31 Did the organization liquidate, terminate, or dissolve and cease operations? <i>If "Yes," complete Schedule N, Part I</i>		X
32 Did the organization sell, exchange, dispose of, or transfer more than 25% of its net assets? <i>If "Yes," complete Schedule N, Part II</i>		X
33 Did the organization own 100% of an entity disregarded as separate from the organization under Regulations sections 301.7701-2 and 301.7701-3? <i>If "Yes," complete Schedule R, Part I</i>		X
34 Was the organization related to any tax-exempt or taxable entity? <i>If "Yes," complete Schedule R, Parts II, III, IV, and V, line 1</i>		X
35 Is any related organization a controlled entity within the meaning of section 512(b)(13)?		X
a Did the organization receive any payment from or engage in any transaction with a controlled entity within the meaning of section 512(b)(13)? <i>If "Yes," complete Schedule R, Part V, line 2</i>		
	<input type="checkbox"/> Yes	<input checked="" type="checkbox"/> No
36 Section 501(c)(3) organizations. Did the organization make any transfers to an exempt non-charitable related organization? <i>If "Yes," complete Schedule R, Part V, line 2</i>		X
37 Did the organization conduct more than 5% of its activities through an entity that is not a related organization and that is treated as a partnership for federal income tax purposes? <i>If "Yes," complete Schedule R, Part VI</i>		X
38 Did the organization complete Schedule O and provide explanations in Schedule O for Part VI, lines 11 and 19? Note. All Form 990 filers are required to complete Schedule O.	X	

Part V Statements Regarding Other IRS Filings and Tax Compliance

Check if Schedule O contains a response to any question in this Part V

Input box for Schedule O response

Table with columns for question number, description, sub-questions (1a-13c), Yes, and No. Contains questions 1a through 14b regarding IRS filings and tax compliance.

Part VI Governance, Management, and Disclosure For each "Yes" response to lines 2 through 7b below, and for a "No" response to line 8a, 8b, or 10b below, describe the circumstances, processes, or changes in Schedule O. See instructions.

Check if Schedule O contains a response to any question in this Part VI [X]

Section A. Governing Body and Management

Table with 4 columns: Question, 1a, 1b, Yes, No. Rows include questions about voting members, family relationships, management delegation, governing documents, asset diversion, members, and meeting documentation.

Section B. Policies (This Section B requests information about policies not required by the Internal Revenue Code.)

Table with 4 columns: Question, Yes, No. Rows include questions about local chapters, written policies, Form 990 distribution, conflict of interest, whistleblower policy, document retention, compensation review, joint ventures, and participation in joint ventures.

Section C. Disclosure

- 17 List the states with which a copy of this Form 990 is required to be filed
18 Section 6104 requires an organization to make its Forms 1023 (or 1024 if applicable), 990, and 990-T (501(c)(3)s only) available for public inspection.
19 Describe in Schedule O whether (and if so, how), the organization makes its governing documents, conflict of interest policy, and financial statements available to the public.
20 State the name, physical address, and telephone number of the person who possesses the books and records of the organization: Patricia Stern (513) 772-4272 2492 Commodity Circle, Cincinnati, OH 45241-1556

Part VII Compensation of Officers, Directors, Trustees, Key Employees, Highest Compensated Employees, and Independent Contractors

Check if Schedule O contains a response to any question in this Part VII

Section A. Officers, Directors, Trustees, Key Employees, and Highest Compensated Employees

1a Complete this table for all persons required to be listed. Report compensation for the calendar year ending with or within the organization's tax year.

- List all of the organization's **current** officers, directors, trustees (whether individuals or organizations), regardless of amount of compensation. Enter -0- in columns (D), (E), and (F) if no compensation was paid.
- List all of the organization's **current** key employees, if any. See instructions for definition of "key employee "
- List the organization's five **current** highest compensated employees (other than an officer, director, trustee, or key employee) who received reportable compensation (Box 5 of Form W-2 and/or Box 7 of Form 1099-MISC) of more than \$100,000 from the organization and any related organizations
 - List all of the organization's **former** officers, key employees, and highest compensated employees who received more than \$100,000 of reportable compensation from the organization and any related organizations
 - List all of the organization's **former directors or trustees** that received, in the capacity as a former director or trustee of the organization, more than \$10,000 of reportable compensation from the organization and any related organizations.

List persons in the following order: individual trustees or directors; institutional trustees; officers, key employees; highest compensated employees; and former such persons

Check this box if neither the organization nor any related organization compensated any current officer, director, or trustee

(A) Name and Title	(B) Average hours per week (describe hours for related organizations in Schedule O)	(C) Position (check all that apply)						(D) Reportable compensation from the organization (W-2/1099-MISC)	(E) Reportable compensation from related organizations (W-2/1099-MISC)	(F) Estimated amount of other compensation from the organization and related organizations
		Individual trustee or director	Institutional trustee	Officer	Key employee	Highest compensated employee	Former			
(1) William Noes Chairman	5	X						0	0	25,000
(2) Stiney Vonderhaar Vice-Chairman	5	X						0	0	25,000
(3) Linda Cox 2nd Vice-Chairman	5	X						0	0	25,000
(4) Janey Cattleman Treasurer	5	X						0	0	25,000
(5) Patricia Stern Executive Director	40			X	X	X		110,598	0	0
(6)										
(7)										
(8)										
(9)										
(10)										
(11)										
(12)										0
(13)										
(14)										
(15)										
(16)										

Part VII Section A. Officers, Directors, Trustees, Key Employees, and Highest Compensated Employees (continued)

(A) Name and title	(B) Average hours per week (describe hours for related organizations in Schedule O)	(C) Position (check all that apply)						(D) Reportable compensation from the organization (W-2/1099-MISC)	(E) Reportable compensation from related organizations (W-2/1099-MISC)	(F) Estimated amount of other compensation from the organization and related organizations
		Individual trustee or director	Institutional trustee	Officer	Key employee	Highest compensated employee	Former			
(17)										
(18)										
(19)										
(20)										
(21)										
(22)										
(23)										
(24)										
(25)										
(26)										
(27)										
(28)										
1b Sub-total							110,598	0	100,000	
c Total from continuation sheets to Part VII, Section A							0	0	0	
d Total (add lines 1b and 1c)							110,598	0	100,000	

2 Total number of individuals (including but not limited to those listed above) who received more than \$100,000 in reportable compensation from the organization **▶ 1**

	Yes	No
3 Did the organization list any former officer, director or trustee, key employee, or highest compensated employee on line 1a? <i>If "Yes," complete Schedule J for such individual</i>		X
4 For any individual listed on line 1a, is the sum of reportable compensation and other compensation from the organization and related organizations greater than \$150,000? <i>If "Yes," complete Schedule J for such individual</i>		X
5 Did any person listed on line 1a receive or accrue compensation from any unrelated organization or individual for services rendered to the organization? <i>If "Yes," complete Schedule J for such person</i>		X

Section B. Independent Contractors

1 Complete this table for your five highest compensated independent contractors that received more than \$100,000 of compensation from the organization.

(A) Name and business address	(B) Description of services	(C) Compensation
		0
		0
		0
		0
		0

2 Total number of independent contractors (including but not limited to those listed above) who received more than \$100,000 in compensation from the organization **▶ 0**

Part VIII Statement of Revenue

			(A) Total revenue	(B) Related or exempt function revenue	(C) Unrelated business revenue	(D) Revenue excluded from tax under sections 512, 513, or 514
Contributions, gifts, grants and other similar amounts	1a Federated campaigns	1a 0				
	b Membership dues	1b 0				
	c Fundraising events	1c 0				
	d Related organizations	1d 0				
	e Government grants (contributions)	1e 0				
	f All other contributions, gifts, grants, and similar amounts not included above	1f 795,129				
	g Noncash contributions included in lines 1a-1f	\$ 0				
	h Total. Add lines 1a-1f		795,129			
Program Service Revenue	Business Code					
	2a		0			
	b		0			
	c		0			
	d		0			
	e		0			
	f All other program service revenue		0			
g Total. Add lines 2a-2f		0				
Other Revenue	3 Investment income (including dividends, interest, and other similar amounts)		652			
	4 Income from investment of tax-exempt bond proceeds		0			
	5 Royalties		0			
	6a Gross Rents	(i) Real (ii) Personal				
	b Less: rental expenses					
	c Rental income or (loss)	0 0				
	d Net rental income or (loss)		0			
	7a Gross amount from sales of assets other than inventory	(i) Securities (ii) Other				
	b Less. cost or other basis and sales expenses					
	c Gain or (loss)	0 0				
	d Net gain or (loss)		0			
	8a Gross income from fundraising events (not including \$ 0 of contributions reported on line 1c). See Part IV, line 18	a 0				
	b Less: direct expenses	b 0				
	c Net income or (loss) from fundraising events		0			
	9a Gross income from gaming activities See Part IV, line 19.	a 0				
b Less. direct expenses	b 0					
c Net income or (loss) from gaming activities		0				
10a Gross sales of inventory, less returns and allowances	a 0					
b Less: cost of goods sold	b 0					
c Net income or (loss) from sales of inventory		0				
Miscellaneous Revenue		Business Code				
11a Reimbursement of video costs to dub produ	519100	8,002				
b		0				
c		0				
d All other revenue		0				
e Total. Add lines 11a-11d		8,002				
12 Total revenue. See instructions.		803,783	0	0	0	

Part IX Statement of Functional Expenses

Section 501(c)(3) and 501(c)(4) organizations must complete all columns.

All other organizations must complete column (A) but are not required to complete columns (B), (C), and (D)

Do not include amounts reported on lines 6b, 7b, 8b, 9b, and 10b of Part VIII.		(A) Total expenses	(B) Program service expenses	(C) Management and general expenses	(D) Fundraising expenses
1	Grants and other assistance to governments and organizations in the U S See Part IV, line 21	0			
2	Grants and other assistance to individuals in the U S. See Part IV, line 22	0			
3	Grants and other assistance to governments, organizations, and individuals outside the U.S See Part IV, lines 15 and 16	0			
4	Benefits paid to or for members	0			
5	Compensation of current officers, directors, trustees, and key employees	110,506	110,506		
6	Compensation not included above, to disqualified persons (as defined under section 4958(f)(1)) and persons described in section 4958(c)(3)(B)	0			
7	Other salaries and wages	363,651	363,651		
8	Pension plan contributions (include section 401(k) and section 403(b) employer contributions)	66,293	66,293		
9	Other employee benefits	52,934	52,934		
10	Payroll taxes	5,673	5,673		
11	Fees for services (non-employees):				
a	Management	0			
b	Legal	2,988	2,988		
c	Accounting	6,800	6,800		
d	Lobbying	0			
e	Professional fundraising services See Part IV, line 17	0			
f	Investment management fees	0			
g	Other	0			
12	Advertising and promotion	0			
13	Office expenses	6,373	6,373		
14	Information technology	929	929		
15	Royalties	0			
16	Occupancy	50,764	50,764		
17	Travel	12,017	12,017		
18	Payments of travel or entertainment expenses for any federal, state, or local public officials	0			
19	Conferences, conventions, and meetings	6,075	6,075		
20	Interest	0			
21	Payments to affiliates	0			
22	Depreciation, depletion, and amortization	165,482	165,482	0	0
23	Insurance	14,548	14,548		
24	Other expenses Itemize expenses not covered above (List miscellaneous expenses in line 24f. If line 24f amount exceeds 10% of line 25, column (A) amount, list line 24f expenses on Schedule O.)				
a	Production Helper Expense	54,747	54,747		
b	Video Tape Expense	7,382	7,382		
c	Equipment and Community Access Expense	38,017	38,017		
d	Equipment rental, repairs and maintenance	19,838	19,838		
e	Dues and subscriptions	2,777	2,777		
f	All other expenses Supplies expense	7,607	7,607		
25	Total functional expenses. Add lines 1 through 24f	995,401	995,401	0	0
26	Joint costs. Check here <input type="checkbox"/> if following SOP 98-2 (ASC 958-720) Complete this line only if the organization reported in column (B) joint costs from a combined educational campaign and fundraising solicitation				

Part X Balance Sheet

		(A) Beginning of year		(B) End of year		
Assets	1	Cash—non-interest-bearing	377,415	1	351,732	
	2	Savings and temporary cash investments	102,070	2	102,721	
	3	Pledges and grants receivable, net	0	3	0	
	4	Accounts receivable, net	0	4	0	
	5	Receivables from current and former officers, directors, trustees, key employees, and highest compensated employees. Complete Part II of Schedule L		5		
	6	Receivables from other disqualified persons (as defined under section 4958(f)(1)), persons described in section 4958(c)(3)(B), and contributing employers and sponsoring organizations of section 501(c)(9) voluntary employees' beneficiary organizations (see instructions)		6		
	7	Notes and loans receivable, net	0	7	0	
	8	Inventories for sale or use	20,000	8	20,000	
	9	Prepaid expenses and deferred charges	1,927	9	1,927	
	10a	Land, buildings, and equipment cost or other basis. Complete Part VI of Schedule D	10a	3,537,159		
	b	Less: accumulated depreciation	10b	2,639,243	10c	897,916
	11	Investments—publicly traded securities	0	11	0	
	12	Investments—other securities. See Part IV, line 11	0	12	0	
	13	Investments—program-related. See Part IV, line 11	0	13	0	
	14	Intangible assets	3	14	175	
	15	Other assets. See Part IV, line 11	0	15	0	
16	Total assets. Add lines 1 through 15 (must equal line 34)	1,564,813	16	1,374,471		
Liabilities	17	Accounts payable and accrued expenses	6,655	17	7,931	
	18	Grants payable		18		
	19	Deferred revenue		19		
	20	Tax-exempt bond liabilities		20		
	21	Escrow or custodial account liability. Complete Part IV of Schedule D		21		
	22	Payables to current and former officers, directors, trustees, key employees, highest compensated employees, and disqualified persons. Complete Part II of Schedule L		22		
	23	Secured mortgages and notes payable to unrelated third parties	0	23	0	
	24	Unsecured notes and loans payable to unrelated third parties	0	24	0	
	25	Other liabilities. Complete Part X of Schedule D	0	25	0	
	26	Total liabilities. Add lines 17 through 25	6,655	26	7,931	
Net Assets or Fund Balances	Organizations that follow SFAS 117, check here <input type="checkbox"/> and complete lines 27 through 29, and lines 33 and 34.					
	27	Unrestricted net assets		27		
	28	Temporarily restricted net assets		28		
	29	Permanently restricted net assets		29		
	Organizations that do not follow SFAS 117, check here <input checked="" type="checkbox"/> and complete lines 30 through 34.					
	30	Capital stock or trust principal, or current funds		30		
	31	Paid-in or capital surplus, or land, building, or equipment fund		31		
	32	Retained earnings, endowment, accumulated income, or other funds	1,558,158	32	1,366,540	
33	Total net assets or fund balances	1,558,158	33	1,366,540		
34	Total liabilities and net assets/fund balances	1,564,813	34	1,374,471		

Part XI Reconciliation of Net Assets

Check if Schedule O contains a response to any question in this Part XI

1	Total revenue (must equal Part VIII, column (A), line 12)	1	803,783
2	Total expenses (must equal Part IX, column (A), line 25)	2	995,401
3	Revenue less expenses. Subtract line 2 from line 1	3	-191,618
4	Net assets or fund balances at beginning of year (must equal Part X, line 33, column (A))	4	1,558,158
5	Other changes in net assets or fund balances (explain in Schedule O)	5	
6	Net assets or fund balances at end of year. Combine lines 3, 4, and 5 (must equal Part X, line 33, column (B))	6	1,366,540

Part XII Financial Statements and Reporting

Check if Schedule O contains a response to any question in this Part XII

		Yes	No
1	Accounting method used to prepare the Form 990: <input type="checkbox"/> Cash <input type="checkbox"/> Accrual <input checked="" type="checkbox"/> Other <u>Modified Cas</u> If the organization changed its method of accounting from a prior year or checked "Other," explain in Schedule O.		
2a	Were the organization's financial statements compiled or reviewed by an independent accountant?	X	
2b	Were the organization's financial statements audited by an independent accountant?	X	
2c	If "Yes" to line 2a or 2b, does the organization have a committee that assumes responsibility for oversight of the audit, review, or compilation of its financial statements and selection of an independent accountant? If the organization changed either its oversight process or selection process during the tax year, explain in Schedule O.	X	
d	If "Yes" to line 2a or 2b, check a box below to indicate whether the financial statements for the year were issued on a separate basis, consolidated basis, or both. <input checked="" type="checkbox"/> Separate basis <input type="checkbox"/> Consolidated basis <input type="checkbox"/> Both consolidated and separate basis		
3a	As a result of a federal award, was the organization required to undergo an audit or audits as set forth in the Single Audit Act and OMB Circular A-133?		X
3b	If "Yes," did the organization undergo the required audit or audits? If the organization did not undergo the required audit or audits, explain why in Schedule O and describe any steps taken to undergo such audits		

**SCHEDULE D
(Form 990)**

Supplemental Financial Statements

OMB No 1545-0047

2010

**Open to Public
Inspection**

Department of the Treasury
Internal Revenue Service

- ▶ Complete if the organization answered "Yes," to Form 990, Part IV, line 6, 7, 8, 9, 10, 11, or 12.
- ▶ Attach to Form 990. ▶ See separate instructions.

Name of the organization Intercommunity Cable Regulatory Commission of SW Ohio	Employer identification number 31-1005731
------------------------------------------------------------------------------------------	-----------------------------------------------------

Part I Organizations Maintaining Donor Advised Funds or Other Similar Funds or Accounts. Complete if the organization answered "Yes" to Form 990, Part IV, line 6.

	(a) Donor advised funds	(b) Funds and other accounts
1 Total number at end of year		
2 Aggregate contributions to (during year)		
3 Aggregate grants from (during year)		
4 Aggregate value at end of year		

5 Did the organization inform all donors and donor advisors in writing that the assets held in donor advised funds are the organization's property, subject to the organization's exclusive legal control? Yes No

6 Did the organization inform all grantees, donors, and donor advisors in writing that grant funds can be used only for charitable purposes and not for the benefit of the donor or donor advisor, or for any other purpose conferring impermissible private benefit? Yes No

Part II Conservation Easements. Complete if the organization answered "Yes" to Form 990, Part IV, line 7

1 Purpose(s) of conservation easements held by the organization (check all that apply).

<input type="checkbox"/> Preservation of land for public use (e.g., recreation or education)	<input type="checkbox"/> Preservation of an historically important land area
<input type="checkbox"/> Protection of natural habitat	<input type="checkbox"/> Preservation of a certified historic structure
<input type="checkbox"/> Preservation of open space	

2 Complete lines 2a through 2d if the organization held a qualified conservation contribution in the form of a conservation easement on the last day of the tax year.

	Held at the End of the Tax Year
a Total number of conservation easements	2a
b Total acreage restricted by conservation easements	2b
c Number of conservation easements on a certified historic structure included in (a)	2c
d Number of conservation easements included in (c) acquired after 8/17/06, and not on a historic structure listed in the National Register	2d

3 Number of conservation easements modified, transferred, released, extinguished, or terminated by the organization during the tax year ▶

4 Number of states where property subject to conservation easement is located ▶

5 Does the organization have a written policy regarding the periodic monitoring, inspection, handling of violations, and enforcement of the conservation easements it holds? Yes No

6 Staff and volunteer hours devoted to monitoring, inspecting, and enforcing conservation easements during the year ▶

7 Amount of expenses incurred in monitoring, inspecting, and enforcing conservation easements during the year ▶ \$

8 Does each conservation easement reported on line 2(d) above satisfy the requirements of section 170(h)(4)(B)(i) and section 170(h)(4)(B)(ii)? Yes No

9 In Part XIV, describe how the organization reports conservation easements in its revenue and expense statement, and balance sheet, and include, if applicable, the text of the footnote to the organization's financial statements that describes the organization's accounting for conservation easements

Part III Organizations Maintaining Collections of Art, Historical Treasures, or Other Similar Assets.

Complete if the organization answered "Yes" to Form 990, Part IV, line 8.

1a If the organization elected, as permitted under SFAS 116 (ASC 958), not to report in its revenue statement and balance sheet works of art, historical treasures, or other similar assets held for public exhibition, education, or research in furtherance of public service, provide, in Part XIV, the text of the footnote to its financial statements that describes these items

b If the organization elected, as permitted under SFAS 116 (ASC 958), to report in its revenue statement and balance sheet works of art, historical treasures, or other similar assets held for public exhibition, education, or research in furtherance of public service, provide the following amounts relating to these items.

(i) Revenues included in Form 990, Part VIII, line 1 ▶ \$

(ii) Assets included in Form 990, Part X ▶ \$

2 If the organization received or held works of art, historical treasures, or other similar assets for financial gain, provide the following amounts required to be reported under SFAS 116 (ASC 958) relating to these items.

a Revenues included in Form 990, Part VIII, line 1 ▶ \$

b Assets included in Form 990, Part X ▶ \$

Part III Organizations Maintaining Collections of Art, Historical Treasures, or Other Similar Assets (continued)

3 Using the organization's acquisition, accession, and other records, check any of the following that are a significant use of its collection items (check all that apply):

- a Public exhibition
- b Scholarly research
- c Preservation for future generations
- d Loan or exchange programs
- e Other

4 Provide a description of the organization's collections and explain how they further the organization's exempt purpose in Part XIV.

5 During the year, did the organization solicit or receive donations of art, historical treasures, or other similar assets to be sold to raise funds rather than to be maintained as part of the organization's collection? Yes No

Part IV Escrow and Custodial Arrangements. Complete if the organization answered "Yes" to Form 990, Part IV, line 9, or reported an amount on Form 990, Part X, line 21.

1a Is the organization an agent, trustee, custodian or other intermediary for contributions or other assets not included on Form 990, Part X? Yes No

b If "Yes," explain the arrangement in Part XIV and complete the following table.

	Amount
1c Beginning balance	0
1d Additions during the year	
1e Distributions during the year	
1f Ending balance	0

2a Did the organization include an amount on Form 990, Part X, line 21? Yes No

b If "Yes," explain the arrangement in Part XIV

Part V Endowment Funds. Complete if the organization answered "Yes" to Form 990, Part IV, line 10.

	(a) Current year	(b) Prior year	(c) Two years back	(d) Three years back	(e) Four years back
1a Beginning of year balance	0	0			
b Contributions					
c Net investment earnings, gains, and losses					
d Grants or scholarships					
e Other expenditures for facilities and programs					
f Administrative expenses					
g End of year balance	0	0	0		

2 Provide the estimated percentage of the year end balance held as:

- a Board designated or quasi-endowment %
- b Permanent endowment %
- c Term endowment %

3a Are there endowment funds not in the possession of the organization that are held and administered for the organization by:

- (i) unrelated organizations
- (ii) related organizations

	Yes	No
3a(i)		
3a(ii)		
3b		

b If "Yes" to 3a(ii), are the related organizations listed as required on Schedule R?

4 Describe in Part XIV the intended uses of the organization's endowment funds.

Part VI Land, Buildings, and Equipment. See Form 990, Part X, line 10.

Description of investment	(a) Cost or other basis (investment)	(b) Cost or other basis (other)	(c) Accumulated depreciation	(d) Book value
1a Land	0	0		0
b Buildings	0	547,799	180,772	367,027
c Leasehold improvements	0	0	0	0
d Equipment	0	2,989,360	2,458,471	530,889
e Other	0	0	0	0

Total. Add lines 1a through 1e. (Column (d) must equal Form 990, Part X, column (B), line 10(c)) ▶ 897,916

Part VII Investments—Other Securities. See Form 990, Part X, line 12.

(a) Description of security or category (including name of security)	(b) Book value	(c) Method of valuation Cost or end-of-year market value
(1) Financial derivatives	0	
(2) Closely-held equity interests	0	
(3) Other	0	
(A)	0	
(B)	0	
(C)	0	
(D)	0	
(E)	0	
(F)	0	
(G)	0	
(H)	0	
(I)	0	
Total (Column (b) must equal Form 990, Part X, col (B) line 12)	0	

Part VIII Investments—Program Related. See Form 990, Part X, line 13.

(a) Description of investment type	(b) Book value	(c) Method of valuation Cost or end-of-year market value
(1)	0	
(2)	0	
(3)	0	
(4)	0	
(5)	0	
(6)	0	
(7)	0	
(8)	0	
(9)	0	
(10)	0	
Total (Column (b) must equal Form 990, Part X, col (B) line 13)	0	

Part IX Other Assets. See Form 990, Part X, line 15.

(a) Description	(b) Book value
(1)	0
(2)	0
(3)	0
(4)	0
(5)	0
(6)	0
(7)	0
(8)	0
(9)	0
(10)	0
Total (Column (b) must equal Form 990, Part X, col (B) line 15.)	0

Part X Other Liabilities. See Form 990, Part X, line 25.

1. (a) Description of liability	(b) Amount
(1) Federal income taxes	0
(2)	0
(3)	0
(4)	0
(5)	0
(6)	0
(7)	0
(8)	0
(9)	0
(10)	0
(11)	0
Total (Column (b) must equal Form 990, Part X, col (B) line 25)	0

2. FIN 48 (ASC 740) Footnote. In Part XIV, provide the text of the footnote to the organization's financial statements that reports the organization's liability for uncertain tax positions under FIN 48 (ASC 740).

Part XI Reconciliation of Change in Net Assets from Form 990 to Audited Financial Statements

1	Total revenue (Form 990, Part VIII, column (A), line 12)	1	803,783
2	Total expenses (Form 990, Part IX, column (A), line 25)	2	995,401
3	Excess or (deficit) for the year. Subtract line 2 from line 1	3	-191,618
4	Net unrealized gains (losses) on investments	4	
5	Donated services and use of facilities	5	
6	Investment expenses	6	
7	Prior period adjustments	7	
8	Other (Describe in Part XIV)	8	
9	Total adjustments (net) Add lines 4 through 8	9	0
10	Excess or (deficit) for the year per audited financial statements Combine lines 3 and 9	10	-191,618

Part XII Reconciliation of Revenue per Audited Financial Statements With Revenue per Return

1	Total revenue, gains, and other support per audited financial statements	1	
2	Amounts included on line 1 but not on Form 990, Part VIII, line 12:		
a	Net unrealized gains on investments	2a	
b	Donated services and use of facilities	2b	
c	Recoveries of prior year grants	2c	
d	Other (Describe in Part XIV.)	2d	
e	Add lines 2a through 2d	2e	0
3	Subtract line 2e from line 1	3	0
4	Amounts included on Form 990, Part VIII, line 12, but not on line 1:		
a	Investment expenses not included on Form 990, Part VIII, line 7b	4a	
b	Other (Describe in Part XIV)	4b	
c	Add lines 4a and 4b	4c	0
5	Total revenue Add lines 3 and 4c. (This must equal Form 990, Part I, line 12.)	5	0

Part XIII Reconciliation of Expenses per Audited Financial Statements With Expenses per Return

1	Total expenses and losses per audited financial statements	1	
2	Amounts included on line 1 but not on Form 990, Part IX, line 25:		
a	Donated services and use of facilities	2a	
b	Prior year adjustments	2b	
c	Other losses	2c	
d	Other (Describe in Part XIV.)	2d	
e	Add lines 2a through 2d	2e	0
3	Subtract line 2e from line 1	3	0
4	Amounts included on Form 990, Part IX, line 25, but not on line 1:		
a	Investment expenses not included on Form 990, Part VIII, line 7b	4a	
b	Other (Describe in Part XIV)	4b	
c	Add lines 4a and 4b	4c	0
5	Total expenses. Add lines 3 and 4c. (This must equal Form 990, Part I, line 18.)	5	0

Part XIV Supplemental Information

Complete this part to provide the descriptions required for Part II, lines 3, 5, and 9; Part III, lines 1a and 4, Part IV, lines 1b and 2b, Part V, line 4, Part X, line 2, Part XI, line 8; Part XII, lines 2d and 4b; and Part XIII, lines 2d and 4b Also complete this part to provide any additional information.

Part IV Line 11 The organization maintains an office and studio that is fully equipped to
 edit, playback and host presentations that are produced and monitored on cable television.
 This supports the member communities in reaching out to their residents which would
 otherwise be prohibitive due to costs. The equipment and building assets have been
 accumulated since operations started in 1983.

SCHEDULE O
(Form 990 or 990-EZ)

Supplemental Information to Form 990 or 990-EZ

OMB No 1545-0047

2010

Open to Public Inspection

Department of the Treasury
Internal Revenue Service

Complete to provide information for responses to specific questions on
Form 990 or 990-EZ or to provide any additional information.
▶ Attach to Form 990 or 990-EZ.

Name of the organization

Employer identification number

Intercommunity Cable Regulatory Commission of SW Ohio

31-1005731

Form 990, Part III, Line 4d: Program Service Expenses: 138,605. Grants and allocations 0.

Revenue 0. The Organization maintains a fully equipped studio, fully equipped vans and needed

equipment that would be prohibitive for member communities to duplicate. It also provides

needed personnel to produce and schedule shows as well as assess equipment needs to be

purchased.

Form 990 Part VI Section A Line 6 The member communities have representatives that they

chose to be on our regional council of governments board.

Form 990 Part VI Section A Line 7a Member representatives vote for the officers.

Form 990 Part VI Section A Line 7b The board meets quarterly and approves actions by the

Organization.

Form 990 Part VI Section B Line 12c The Organization has a conflict of interest policy in

addition to following the Ohio Revised Code for a regional council of governments. The

Executive Director approves all invoices, the Treasurer signs all checks and the Board

approves the expenditures. All transactions are very transparent.

Form 990 Part VI Section B Line 15 The Board approves the salaries for all employees

including the Executive Director. The Board members volunteer (including officers) their time

as representatives of their communities.

Form 990 Part VI Section B Line 19 The Organization follows the Ohio Revised Code

including the public records requirements. All records of the Organization are public and

available upon request. Programs brought to the Organization from outside are available with

permission from the owners of that production.

Depreciation and Amortization

(Including Information on Listed Property)

Department of the Treasury
Internal Revenue Service (99)

▶ See separate instructions. ▶ Attach to your tax return.

Name(s) shown on return Intercommunity Cable Regulatory Commission	Business or activity to which this form relates 990	Identifying number 31-1005731
-----------------------------------------------------------------------	--------------------------------------------------------	----------------------------------

Part I Election To Expense Certain Property Under Section 179

Note: If you have any listed property, complete Part V before you complete Part I

1 Maximum amount (see instructions)	1	
2 Total cost of section 179 property placed in service (see instructions)	2	
3 Threshold cost of section 179 property before reduction in limitation (see instructions)	3	
4 Reduction in limitation Subtract line 3 from line 2. If zero or less, enter -0-	4	0
5 Dollar limitation for tax year Subtract line 4 from line 1. If zero or less, enter -0-. If married filing separately, see instructions	5	0
6		
(a) Description of property	(b) Cost (business use only)	(c) Elected cost
7 Listed property Enter the amount from line 29	7	
8 Total elected cost of section 179 property. Add amounts in column (c), lines 6 and 7	8	0
9 Tentative deduction Enter the smaller of line 5 or line 8	9	0
10 Carryover of disallowed deduction from line 13 of your 2009 Form 4562	10	
11 Business income limitation Enter the smaller of business income (not less than zero) or line 5 (see instructions)	11	
12 Section 179 expense deduction Add lines 9 and 10, but do not enter more than line 11	12	0
13 Carryover of disallowed deduction to 2011. Add lines 9 and 10, less line 12	▶ 13	0

Note: Do not use Part II or Part III below for listed property. Instead, use Part V

Part II Special Depreciation Allowance and Other Depreciation (Do not include listed property.) (See instructions.)

14 Special depreciation allowance for qualified property (other than listed property) placed in service during the tax year (see instructions)	14	
15 Property subject to section 168(f)(1) election	15	
16 Other depreciation (including ACRS)	16	

Part III MACRS Depreciation (Do not include listed property) (See instructions)

Section A

17 MACRS deductions for assets placed in service in tax years beginning before 2010	17	165,482
18 If you are electing to group any assets placed in service during the tax year into one or more general asset accounts, check here <input type="checkbox"/>		

Section B - Assets Placed in Service During 2010 Tax Year Using the General Depreciation System

(a) Classification of property	(b) Month and year placed in service	(c) Basis for depreciation (business/investment use only—see instructions)	(d) Recovery period	(e) Convention	(f) Method	(g) Depreciation deduction
19 a 3-year property						---
b 5-year property						---
c 7-year property						---
d 10-year property						---
e 15-year property						---
f 20-year property						---
g 25-year property			25 yrs.		S/L	---
h Residential rental property			27 5 yrs.	MM	S/L	---
			27 5 yrs	MM	S/L	---
i Nonresidential real property			39 yrs	MM	S/L	---
				MM	S/L	---

Section C - Assets Placed in Service During 2010 Tax Year Using the Alternative Depreciation System

20 a Class life					S/L	
b 12-year			12 yrs.		S/L	
c 40-year			40 yrs	MM	S/L	

Part IV Summary (See instructions.)

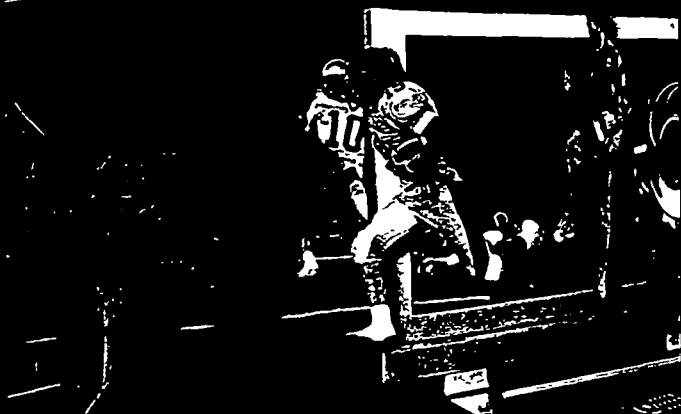
21 Listed property Enter amount from line 28	21	
22 Total. Add amounts from line 12, lines 14 through 17, lines 19 and 20 in column (g), and line 21. Enter here and on the appropriate lines of your return. Partnerships and S corporations - see instructions	22	165,482
23 For assets shown above and placed in service during the current year, enter the portion of the basis attributable to section 263A costs	▶ 23	

For Paperwork Reduction Act Notice, see separate instructions.

SPRING
2009

ICRC
COMMUNITY

Satellite



this issue

ICRC Staff Recognized P.1

Cable TV Options P.2

DTV Conversion P.3

Upcoming Events P.4

Serving the Communities of:

Amberley Village
Arlington Heights
Columbia Township
Crosby Township
Deer Park
Elmwood Place
Evendale
Fairfax
Glendale
Harrison Township
Harrison
Indian Hill
Lincoln Heights
Loveland
Milford
Mason
Mariemont
Mount Healthy
Reading
Saint Bernard
Springdale
Silverton
Sharonville
Symmes Township
Terrace Park
Woodlawn

ICRC Staff Recognized for Outstanding Service

Occasionally, we come across people who are never satisfied with just doing their job. These rare individuals go above and beyond whatever is expected of them and too many times are overlooked and underappreciated.

Fortunately, this is not the case with the ICRC's own Jen Otten and the organizations that she works with every day. Jen was recently recognized by two prominent organizations for her outstanding video productions and the dedication she has shown in helping them communicate their own missions.

The Sharonville Chamber of Commerce recognized Jen at their Annual Recognition Awards Ceremony for her contributions to their monthly cable access program "Business Talk." Jen spends hours each month visiting the businesses to be featured on the program. She collects video footage in the field to be edited into the program after the guests are interviewed in the studio. When presenting Jen with this award, Chamber President, Rich Arnold is quoted as saying "She does this with a smile and she's not looking for any kind of reward. She truly does it because that is the type of person she is."

Arnold's sentiments are shared by the staff at Clovernook Center for the Blind and Visually Impaired. Each year

Clovernook hosts an awards banquet to publicly recognize individuals and organizations that are committed to improving the lives of people with visual impairments. This year, they have elected to give one of their highest honors, the Founder's Award, to Jen Otten.

Jen recently produced, taped, and directed a promotional documentary on Clovernook to aid their marketing program. Anne M. Maxfield, Vice President of Fund

Development & Community Relations had this to say about Jen: "All of us at Clovernook Center for the Blind and Visually Impaired thank Jen Otten for the stellar job she did with the agency video. It was clear that Jen took an interest in our mission -- listened to those she interviewed -- matched the right soundbites with the correct footage and music. What resulted is a fantastic tool that the team at Clovernook Center can use to promote our organization to the Greater Cincinnati Community. Thank you, Jen!"

The ICRC is proud to have Jen as one of many staff members that go the extra mile. If you would like to hear more information on what the ICRC has to offer your organization, call Pat Stern at 513-772-4272.

Intercommunity Cable

Regulatory Commission



STAY CONNECTED

We are always looking for new and improved ways to keep in touch with the residents, elected officials and leaders of the communities we serve. Consider signing up for the following programs to keep up to date on all the latest news regarding the ICRC.

EMAIL SUBSCRIPTIONS

Send an email to melissa@icrcv.com with the word "SUBSCRIBE" in the subject line to start receiving our quarterly newsletter as well as the minutes from the board meetings sent to you electronically. You can expect approximately 10 messages a year and your contact information will remain confidential.

FACEBOOK

Do you have a profile on Facebook? Click in the search box and type Intercommunity Cable Regulatory Commission to find our page and become a "FAN" Check back often for event schedules, videos and the latest news.



Do You Have New Cable TV Options?

Cincinnati Bell is expanding services with cable TV in three ICRC Communities. Is your community next?

For decades, the ICRC has been hoping to see the day when consumers would have a choice in selecting a cable television provider. That day has arrived for residents of Mason, Mt Healthy and North College Hill

Cincinnati Bell has purchased the municipal cable system built by the City of Lebanon and is expanding it into other communities in the greater Cincinnati area. Programming packages range from Basic to Digital levels allowing even the smallest of budgets a choice. Subscribers opting for the Deluxe or Digital packages can also choose between digital, HDTV or DVR/HDTV receivers

Cincinnati Bell has informed us that they are hoping to provide digital television service throughout Hamilton County within the next year. Glendale, Loveland and Symmes Township should be among the next few communities to be added.

Unfortunately, Cincinnati Bell is not providing public access outside Lebanon at this time. We have met with them and we are committed to working with other local providers of community based programming to share costs in accomplishing our goal of having local

programming on every cable system in our service area

If you live in one of these communities and would like more information, contact Cincinnati Bell at (513) 933-7201

Pat Stern
Executive Director

Intercommunity Cable Regulatory Commission
Combined Statement of Assets, Liabilities & Fund Balance
All Enterprise Funds
For the Year Ended December 31, 2008

ASSETS	
Current Assets	
Cash	\$ 463,453
Inventory - Video Tapes	20,000
Total Current Assets	<u>483,453</u>
Property and Equipment, at cost	
Office Equipment & Furniture	183,797
Video Equipment	982,854
Vans - Fully Equipped w/ Video Equipment	664,027
Government Access Equipment	277,956
Building	254,280
Building Improvements	293,519
Playback Equipment & Studio	903,482
	<u>3,559,915</u>
Less Accumulated Depreciation	<u>2,291,222</u>
Net Property & Equipment	<u>1,268,693</u>
Other Assets	
Deposits - Lease & Workers Comp	<u>1,927</u>
Total Other Assets	1,927
Total Assets	<u>\$ 1,754,073</u>
LIABILITIES & FUND BALANCE	
Current Liabilities	
Payroll Liabilities	\$ 11,775
Total Current Liabilities	<u>11,775</u>
Long-term Liabilities	<u>0</u>
Total Liabilities	<u>11,775</u>
Fund Balance	<u>1,742,298</u>
Total Liabilities & Fund Balance	<u>\$ 1,754,073</u>

This preliminary and tentative statement was prepared by William B. Morand, CPA



IS your TV Ready for Digital?

On June 12, 2009, television will undergo the biggest change since color was introduced in the 1950s. That's the date on which analog broadcasting will end for full-power TV stations.

Currently, most stations are broadcasting in two formats - digital and analog. Those of us with digital television sets are already enjoying the benefits of DTV. Those with the older analog sets are still getting programming as we always have. But that will change on

June 12, 2009, when full-power stations will stop broadcasting in analog. After that date, they will only broadcast in digital, so you will have to make some changes if you watch free over-the-air TV broadcasts on an analog TV with an antenna.

That doesn't mean you need to get a new television set. Buying a digital TV is just one option. There are low-cost converter boxes to change the digital signal to one that your current analog set can

receive. If you currently receive your programming through a satellite or cable provider, ask your provider what equipment you will need, if any, to continue receiving your signals through the transition. For more information on the digital television transition, including information on a government coupon program for converter boxes, go to www.dtv.gov, or call 1-888-CALL-FCC

Unresolved Cable Complaints

If you are experiencing a problem with your cable company that you can not resolve, let us help. Contact ICRC Executive Director, Pat Stern at (513) 772-4272 or pat@icrcvtv.com

Public Service Announcements

Is your non-profit organization having a meeting or fundraiser? Let us help you get the word out by displaying a small message on the public access channels in between programming. PSA's can be submitted thru our website at www.icrcvtv.com or by calling Gigi at (513) 772-4272.

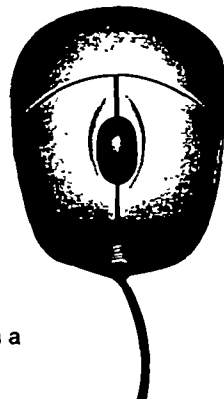
Order A DVD

Copies of all ICRC produced programs are available on DVD. Call Melissa at (513) 772-4272 for more details.

This Quarter's Q&A Editing Tip

I'm tired of using the same old video transitions. Have any ideas on how to freshen up my projects?

Why not try "teaming up" a trusty dissolve with another transition such as a fade to white? Or how about a Gaussian Blur with a



Glow Effect? By stacking transitions you can easily add a pleasurable and professional feel to your project. A little creative effort in your transitions will go a long way! Try it out and let us see it when you're done.

Kenneth Allen
Production Specialist

Volunteer Opportunities

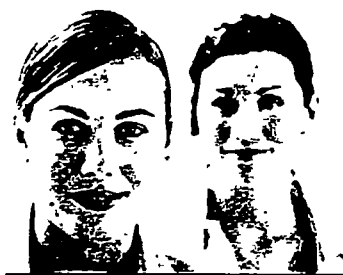
The ICRC is a great place to volunteer in your community and gain valuable video experience. We have opportunities to work on sporting events, community events and studio shoots. Email tim@icrcvtv.com to get started.

Intercommunity Cable Regulatory Commission



2492 Commodore Circle
Sharonville, OH 45241
(513) 772-1272
Fax (513) 772-1351
www.icrcv.com

PRSR STD
U.S Postage
PAID
Cincinnati, OH
Permit No. 5471



Upcoming Events

• Free Video Production Training

The ICRC offers free video production classes to all residents of ICRC Communities. This four week training session starts with an orientation class on the first Tuesday of each month at 6:00 PM and continues with camera and video editing classes the following three weeks. Contact jen@icrcv.com to register today.

• ICRC Spring Meeting.

Quarterly meeting of the ICRC Board of Directors. Dinner will be provided, please make your reservation by emailing melissa@icrcv.com.

• Blue Chip Cable Access Awards.

Join us at the 20th Century Theater in Oakley for this year's award ceremony. Can't make it to the show? Watch it LIVE on ICRC. Check out www.icrcv.com for channel and replay information.