



See a Social Security Number? Say Something!  
Report Privacy Problems to <https://public.resource.org/privacy>  
Or call the IRS Identity Theft Hotline at 1-800-908-4490



Form **990-PF**

Department of the Treasury  
Internal Revenue Service

**Return of Private Foundation**  
or Section 4947(a)(1) Nonexempt Charitable Trust  
Treated as a Private Foundation

OMB No 1545-0052

**2010**

Note The foundation may be able to use a copy of this return to satisfy state reporting requirements

For calendar year 2010, or tax year beginning , 2010, and ending , 20

G Check all that apply:  Initial return  Initial return of a former public charity  Final return  
 Amended return  Address change  Name change

Name of foundation **A Employer identification number**

**WILLIAM M. EWING CHARITABLE TRUST 8115002355**

**25-6580784**

Number and street (or P O box number if mail is not delivered to street address) Room/suite **B Telephone number (see page 10 of the instructions)**

**PO BOX 1558 DEPT EA4E86**

**(330) 742-7484**

City or town, state, and ZIP code **C If exemption application is pending, check here**

**COLUMBUS, OH 43216**

**D 1 Foreign organizations, check here**

**2 Foreign organizations meeting the 85% test, check here and attach computation**

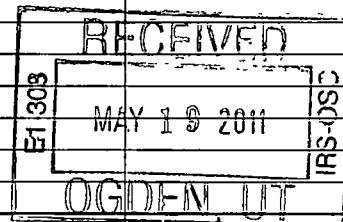
**H Check type of organization:**  Section 501(c)(3) exempt private foundation **E If private foundation status was terminated under section 507(b)(1)(A), check here**

Section 4947(a)(1) nonexempt charitable trust  Other taxable private foundation **F If the foundation is in a 60-month termination under section 507(b)(1)(B), check here**

**I Fair market value of all assets at end of year (from Part II, col. (c), line 16) \$ 407,233.** **J Accounting method:**  Cash  Accrual  Other (specify) **(Part I, column (d) must be on cash basis.)**

**Part I Analysis of Revenue and Expenses** (The total of amounts in columns (b), (c), and (d) may not necessarily equal the amounts in column (a) (see page 11 of the instructions))

	(a) Revenue and expenses per books	(b) Net investment income	(c) Adjusted net income	(d) Disbursements for charitable purposes (cash basis only)
1 Contributions, gifts, grants, etc., received (attach schedule)				
2 Check <input type="checkbox"/> if the foundation is not required to attach Sch. B				
3 Interest on savings and temporary cash investments				
4 Dividends and interest from securities	9,114.	9,114.		STMT 1
5a Gross rents				
b Net rental income or (loss)				
6a Net gain or (loss) from sale of assets not on line 10	25,233.			
b Gross sales price for all assets on line 6a	161,478.			
7 Capital gain net income (from Part IV, line 2)		25,233.		
8 Net short-term capital gain				
9 Income modifications				
10a Gross sales less returns and allowances				
b Less Cost of goods sold				
c Gross profit or (loss) (attach schedule)				
11 Other income (attach schedule)				
12 Total Add lines 1 through 11	34,347.	34,347.		
13 Compensation of officers, directors, trustees, etc.	4,961.	2,481.		2,481.
14 Other employee salaries and wages		NONE	NONE	
15 Pension plans, employee benefits		NONE	NONE	
16a Legal fees (attach schedule)				
b Accounting fees (attach schedule) STMT 3	550.	NONE	NONE	550.
c Other professional fees (attach schedule)				
17 Interest				
18 Taxes (attach schedule) (see page 14 of the instructions) STMT 4	217.	90.		
19 Depreciation (attach schedule) and depletion				
20 Occupancy				
21 Travel, conferences, and meetings		NONE	NONE	
22 Printing and publications		NONE	NONE	
23 Other expenses (attach schedule)				
24 Total operating and administrative expenses. Add lines 13 through 23	5,728.	2,571.	NONE	3,031.
25 Contributions, gifts, grants paid	14,938.			14,938.
26 Total expenses and disbursements Add lines 24 and 25	20,666.	2,571.	NONE	17,969.
27 Subtract line 26 from line 12:				
a Excess of revenue over expenses and disbursements	13,681.			
b Net investment income (if negative, enter -0-)		31,776.		
c Adjusted net income (if negative, enter -0-)				



POSTMARK DATE MAY 17 2011

Revenue

Operating and Administrative Expenses 4 2011

Handwritten mark

Part II Balance Sheets		Attached schedules and amounts in the description column should be for end-of-year amounts only (See instructions)	Beginning of year	End of year	
			(a) Book Value	(b) Book Value	(c) Fair Market Value
Assets	1	Cash - non-interest-bearing . . . . .			
	2	Savings and temporary cash investments . . . . .			
	3	Accounts receivable ▶ Less: allowance for doubtful accounts ▶			
	4	Pledges receivable ▶ Less: allowance for doubtful accounts ▶			
	5	Grants receivable . . . . .			
	6	Receivables due from officers, directors, trustees, and other disqualified persons (attach schedule) (see page 15 of the instructions)			
	7	Other notes and loans receivable (attach schedule) ▶ Less: allowance for doubtful accounts ▶			NONE
	8	Inventories for sale or use . . . . .			
	9	Prepaid expenses and deferred charges . . . . .			
	10 a	Investments - U S and state government obligations (attach schedule) . . . . .			
	b	Investments - corporate stock (attach schedule) . . . . .			
	c	Investments - corporate bonds (attach schedule) . . . . .			
	11	Investments - land, buildings, and equipment basis ▶ Less: accumulated depreciation (attach schedule) ▶			
	12	Investments - mortgage loans . . . . .			
	13	Investments - other (attach schedule) . . . . . STMT 5	353,916.	367,616.	407,233.
	14	Land, buildings, and equipment basis ▶ Less: accumulated depreciation (attach schedule) ▶			
15	Other assets (describe ▶ . . . . . )				
16	<b>Total assets</b> (to be completed by all filers - see the instructions Also, see page 1, item I) . . . . .	353,916.	367,616.	407,233.	
Liabilities	17	Accounts payable and accrued expenses . . . . .			
	18	Grants payable . . . . .			
	19	Deferred revenue . . . . .			
	20	Loans from officers, directors, trustees, and other disqualified persons . . . . .			
	21	Mortgages and other notes payable (attach schedule) . . . . .			
	22	Other liabilities (describe ▶ . . . . . )			
	23	<b>Total liabilities</b> (add lines 17 through 22) . . . . .			
Net Assets or Fund Balances	<b>Foundations that follow SFAS 117, check here ▶ <input type="checkbox"/></b> <b>and complete lines 24 through 26 and lines 30 and 31.</b>				
	24	Unrestricted . . . . .			
	25	Temporarily restricted . . . . .			
	26	Permanently restricted . . . . .			
	<b>Foundations that do not follow SFAS 117, check here and complete lines 27 through 31. ▶ <input checked="" type="checkbox"/></b>				
	27	Capital stock, trust principal, or current funds . . . . .	353,916.	367,616.	
	28	Paid-in or capital surplus, or land, bldg, and equipment fund . . . . .			
29	Retained earnings, accumulated income, endowment, or other funds . . . . .				
30	<b>Total net assets or fund balances</b> (see page 17 of the instructions) . . . . .	353,916.	367,616.		
31	<b>Total liabilities and net assets/fund balances</b> (see page 17 of the instructions) . . . . .	353,916.	367,616.		

Part III Analysis of Changes in Net Assets or Fund Balances		
1	Total net assets or fund balances at beginning of year - Part II, column (a), line 30 (must agree with end-of-year figure reported on prior year's return) . . . . .	1 353,916.
2	Enter amount from Part I, line 27a . . . . .	2 13,681.
3	Other increases not included in line 2 (itemize) ▶ SEE STATEMENT 6	3 19.
4	Add lines 1, 2, and 3 . . . . .	4 367,616.
5	Decreases not included in line 2 (itemize) ▶	5
6	<b>Total net assets or fund balances at end of year</b> (line 4 minus line 5) - Part II, column (b), line 30 . . . . .	6 367,616.

**Part IV Capital Gains and Losses for Tax on Investment Income**

(a) List and describe the kind(s) of property sold (e.g., real estate, 2-story brick warehouse, or common stock, 200 shs MLC Co.)			(b) How acquired P-Purchase D-Donation	(c) Date acquired (mo, day, yr)	(d) Date sold (mo, day, yr)
<b>1a SEE PART IV DETAIL</b>					
<b>b</b>					
<b>c</b>					
<b>d</b>					
<b>e</b>					
(e) Gross sales price	(f) Depreciation allowed (or allowable)	(g) Cost or other basis plus expense of sale	(h) Gain or (loss) (e) plus (f) minus (g)		
<b>a</b>					
<b>b</b>					
<b>c</b>					
<b>d</b>					
<b>e</b>					
Complete only for assets showing gain in column (h) and owned by the foundation on 12/31/69			(l) Gains (Col. (h) gain minus col. (k), but not less than -0-) or Losses (from col. (h))		
(i) FMV as of 12/31/69	(j) Adjusted basis as of 12/31/69	(k) Excess of col. (i) over col. (j), if any			
<b>a</b>					
<b>b</b>					
<b>c</b>					
<b>d</b>					
<b>e</b>					
<b>2</b> Capital gain net income or (net capital loss) { If gain, also enter in Part I, line 7 If (loss), enter -0- in Part I, line 7 }			<b>2</b>	25,233.	
<b>3</b> Net short-term capital gain or (loss) as defined in sections 1222(5) and (6) If gain, also enter in Part I, line 8, column (c) (see pages 13 and 17 of the instructions). If (loss), enter -0- in Part I, line 8. . . . . }			<b>3</b>		

**Part V Qualification Under Section 4940(e) for Reduced Tax on Net Investment Income**

(For optional use by domestic private foundations subject to the section 4940(a) tax on net investment income.)

If section 4940(d)(2) applies, leave this part blank.

Was the foundation liable for the section 4942 tax on the distributable amount of any year in the base period?  Yes  No  
 If "Yes," the foundation does not qualify under section 4940(e). Do not complete this part.

**1** Enter the appropriate amount in each column for each year; see page 18 of the instructions before making any entries.

(a) Base period years Calendar year (or tax year beginning in)	(b) Adjusted qualifying distributions	(c) Net value of noncharitable-use assets	(d) Distribution ratio (col. (b) divided by col. (c))
2009	24,552.	333,636.	0.07358918102
2008	33,744.	405,721.	0.08317045457
2007	21,938.	419,610.	0.05228188079
2006			
2005			

<b>2</b> Total of line 1, column (d) . . . . .	<b>2</b>	0.20904151638
<b>3</b> Average distribution ratio for the 5-year base period - divide the total on line 2 by 5, or by the number of years the foundation has been in existence if less than 5 years . . . . .	<b>3</b>	0.06968050546
<b>4</b> Enter the net value of noncharitable-use assets for 2010 from Part X, line 5 . . . . .	<b>4</b>	375,540.
<b>5</b> Multiply line 4 by line 3 . . . . .	<b>5</b>	26,168.
<b>6</b> Enter 1% of net investment income (1% of Part I, line 27b) . . . . .	<b>6</b>	318.
<b>7</b> Add lines 5 and 6 . . . . .	<b>7</b>	26,486.
<b>8</b> Enter qualifying distributions from Part XII, line 4 . . . . . If line 8 is equal to or greater than line 7, check the box in Part VI, line 1b, and complete that part using a 1% tax rate. See the Part VI instructions on page 18.	<b>8</b>	17,969.

**Part VI Excise Tax Based on Investment Income (Section 4940(a), 4940(b), 4940(e), or 4948 - see page 18 of the instructions)**

1a	Exempt operating foundations described in section 4940(d)(2), check here <input type="checkbox"/> and enter "N/A" on line 1 . . . . . Date of ruling or determination letter _____ (attach copy of ruling letter if necessary - see instructions)		
b	Domestic foundations that meet the section 4940(e) requirements in Part V, check here <input type="checkbox"/> and enter 1% of Part I, line 27b . . . . .	1	636.
c	All other domestic foundations enter 2% of line 27b Exempt foreign organizations enter 4% of Part I, line 12, col (b).		
2	Tax under section 511 (domestic section 4947(a)(1) trusts and taxable foundations only Others enter -0-) . . . . .	2	
3	Add lines 1 and 2 . . . . .	3	636.
4	Subtitle A (income) tax (domestic section 4947(a)(1) trusts and taxable foundations only Others enter -0-) . . . . .	4	NONE
5	<b>Tax based on investment income.</b> Subtract line 4 from line 3 If zero or less, enter -0- . . . . .	5	636.
6	Credits/Payments:		
a	2010 estimated tax payments and 2009 overpayment credited to 2010 . . . . .	6a	64.
b	Exempt foreign organizations-tax withheld at source . . . . .	6b	NONE
c	Tax paid with application for extension of time to file (Form 8868) . . . . .	6c	NONE
d	Backup withholding erroneously withheld . . . . .	6d	
7	Total credits and payments Add lines 6a through 6d . . . . .	7	64.
8	Enter any <b>penalty</b> for underpayment of estimated tax Check here <input type="checkbox"/> if Form 2220 is attached . . . . .	8	
9	<b>Tax due.</b> If the total of lines 5 and 8 is more than line 7, enter <b>amount owed</b> . . . . .	9	572.
10	<b>Overpayment.</b> If line 7 is more than the total of lines 5 and 8, enter the <b>amount overpaid</b> . . . . .	10	
11	Enter the amount of line 10 to be <b>Credited to 2011 estimated tax</b> <input type="checkbox"/> <b>Refunded</b> <input type="checkbox"/>	11	

**Part VII-A Statements Regarding Activities**

	Yes	No
1a During the tax year, did the foundation attempt to influence any national, state, or local legislation or did it participate or intervene in any political campaign? . . . . .		X
b Did it spend more than \$100 during the year (either directly or indirectly) for political purposes (see page 19 of the instructions for definition)? . . . . . <i>If the answer is "Yes" to 1a or 1b, attach a detailed description of the activities and copies of any materials published or distributed by the foundation in connection with the activities</i>		X
c Did the foundation file <b>Form 1120-POL</b> for this year? . . . . .		X
d Enter the amount (if any) of tax on political expenditures (section 4955) imposed during the year (1) On the foundation ▶ \$ _____ (2) On foundation managers ▶ \$ _____		
e Enter the reimbursement (if any) paid by the foundation during the year for political expenditure tax imposed on foundation managers ▶ \$ _____		
2 Has the foundation engaged in any activities that have not previously been reported to the IRS? . . . . . <i>If "Yes," attach a detailed description of the activities.</i>		X
3 Has the foundation made any changes, not previously reported to the IRS, in its governing instrument, articles of incorporation, or bylaws, or other similar instruments? <i>If "Yes," attach a conformed copy of the changes</i> . . . . .		X
4a Did the foundation have unrelated business gross income of \$1,000 or more during the year? . . . . .		X
b If "Yes," has it filed a tax return on <b>Form 990-T</b> for this year? . . . . .		
5 Was there a liquidation, termination, dissolution, or substantial contraction during the year? . . . . . <i>If "Yes," attach the statement required by General Instruction T</i>		X
6 Are the requirements of section 508(e) (relating to sections 4941 through 4945) satisfied either: • By language in the governing instrument, or • By state legislation that effectively amends the governing instrument so that no mandatory directions that conflict with the state law remain in the governing instrument? . . . . .		X
7 Did the foundation have at least \$5,000 in assets at any time during the year? <i>If "Yes," complete Part II, col (c), and Part XV</i> . . . . .	X	
8a Enter the states to which the foundation reports or with which it is registered (see page 19 of the instructions) ▶ _____		
b If the answer is "Yes" to line 7, has the foundation furnished a copy of Form 990-PF to the Attorney General (or designate) of each state as required by <i>General Instruction G</i> ? <i>If "No," attach explanation</i> . . . . .	X	
9 Is the foundation claiming status as a private operating foundation within the meaning of section 4942(j)(3) or 4942(j)(5) for calendar year 2010 or the taxable year beginning in 2010 (see instructions for Part XIV on page 27)? <i>If "Yes," complete Part XIV</i> . . . . .		X
10 Did any persons become substantial contributors during the tax year? <i>If "Yes," attach a schedule listing their names and addresses</i> . . . . .		X

Part VII-A Statements Regarding Activities (continued)

11 At any time during the year, did the foundation, directly or indirectly, own a controlled entity within the meaning of section 512(b)(13)? If "Yes," attach schedule (see page 20 of the instructions) . . . . . 11 X
12 Did the foundation acquire a direct or indirect interest in any applicable insurance contract before August 17, 2008? . . . . . 12 X
13 Did the foundation comply with the public inspection requirements for its annual returns and exemption application? . . . . . 13 X
Website address N/A
14 The books are in care of HUNTINGTON NATIONAL BANK Telephone no (330) 742-7484
Located at P.O. BOX 1558 DEPT EA4E86, COLUMBUS, OH ZIP + 4 43216
15 Section 4947(a)(1) nonexempt charitable trusts filing Form 990-PF in lieu of Form 1041 - Check here . . . . . 15
16 At any time during calendar year 2010, did the foundation have an interest in or a signature or other authority over a bank, securities, or other financial account in a foreign country? . . . . . 16 Yes No X
See page 20 of the instructions for exceptions and filing requirements for Form TD F 90-22.1 If "Yes," enter the name of the foreign country

Part VII-B Statements Regarding Activities for Which Form 4720 May Be Required

File Form 4720 if any item is checked in the "Yes" column, unless an exception applies.

1a During the year did the foundation (either directly or indirectly)
(1) Engage in the sale or exchange, or leasing of property with a disqualified person? . . . . . Yes X No
(2) Borrow money from, lend money to, or otherwise extend credit to (or accept it from) a disqualified person? . . . . . Yes X No
(3) Furnish goods, services, or facilities to (or accept them from) a disqualified person? . . . . . Yes X No
(4) Pay compensation to, or pay or reimburse the expenses of, a disqualified person? . . . . . X Yes No
(5) Transfer any income or assets to a disqualified person (or make any of either available for the benefit or use of a disqualified person)? . . . . . Yes X No
(6) Agree to pay money or property to a government official? (Exception Check "No" if the foundation agreed to make a grant to or to employ the official for a period after termination of government service, if terminating within 90 days) . . . . . Yes X No
b If any answer is "Yes" to 1a(1)-(6), did any of the acts fail to qualify under the exceptions described in Regulations section 53.4941(d)-3 or in a current notice regarding disaster assistance (see page 22 of the instructions)? . . . . . 1b X
Organizations relying on a current notice regarding disaster assistance check here . . . . .
c Did the foundation engage in a prior year in any of the acts described in 1a, other than excepted acts, that were not corrected before the first day of the tax year beginning in 2010? . . . . . 1c X
2 Taxes on failure to distribute income (section 4942) (does not apply for years the foundation was a private operating foundation defined in section 4942(j)(3) or 4942(j)(5)):
a At the end of tax year 2010, did the foundation have any undistributed income (lines 6d and 6e, Part XIII) for tax year(s) beginning before 2010? . . . . . Yes X No
If "Yes," list the years
b Are there any years listed in 2a for which the foundation is not applying the provisions of section 4942(a)(2) (relating to incorrect valuation of assets) to the year's undistributed income? (If applying section 4942(a)(2) to all years listed, answer "No" and attach statement - see page 22 of the instructions) . . . . . 2b X
c If the provisions of section 4942(a)(2) are being applied to any of the years listed in 2a, list the years here
3a Did the foundation hold more than a 2% direct or indirect interest in any business enterprise at any time during the year? . . . . . Yes X No
b If "Yes," did it have excess business holdings in 2010 as a result of (1) any purchase by the foundation or disqualified persons after May 26, 1969, (2) the lapse of the 5-year period (or longer period approved by the Commissioner under section 4943(c)(7)) to dispose of holdings acquired by gift or bequest, or (3) the lapse of the 10-, 15-, or 20-year first phase holding period? (Use Schedule C, Form 4720, to determine if the foundation had excess business holdings in 2010) . . . . . 3b
4a Did the foundation invest during the year any amount in a manner that would jeopardize its charitable purposes? . . . . . 4a X
b Did the foundation make any investment in a prior year (but after December 31, 1969) that could jeopardize its charitable purpose that had not been removed from jeopardy before the first day of the tax year beginning in 2010? . . . . . 4b X

**Part VII-B Statements Regarding Activities for Which Form 4720 May Be Required (continued)**

**5a** During the year did the foundation pay or incur any amount to

(1) Carry on propaganda, or otherwise attempt to influence legislation (section 4945(e))? . . . . .  Yes  No

(2) Influence the outcome of any specific public election (see section 4955); or to carry on, directly or indirectly, any voter registration drive? . . . . .  Yes  No

(3) Provide a grant to an individual for travel, study, or other similar purposes? . . . . .  Yes  No

(4) Provide a grant to an organization other than a charitable, etc., organization described in section 509(a)(1), (2), or (3), or section 4940(d)(2)? (see page 22 of the instructions) . . . . .  Yes  No

(5) Provide for any purpose other than religious, charitable, scientific, literary, or educational purposes, or for the prevention of cruelty to children or animals? . . . . .  Yes  No

**b** If any answer is "Yes" to 5a(1)-(5), did any of the transactions fail to qualify under the exceptions described in Regulations section 53.4945 or in a current notice regarding disaster assistance (see page 22 of the instructions)? . . . . . **5b**

Organizations relying on a current notice regarding disaster assistance check here . . . . .

**c** If the answer is "Yes" to question 5a(4), does the foundation claim exemption from the tax because it maintained expenditure responsibility for the grant? . . . . .  Yes  No

If "Yes," attach the statement required by Regulations section 53.4945-5(d)

**6a** Did the foundation, during the year, receive any funds, directly or indirectly, to pay premiums on a personal benefit contract? . . . . .  Yes  No

**b** Did the foundation, during the year, pay premiums, directly or indirectly, on a personal benefit contract? . . . . . **6b**  Yes  No

If "Yes" to 6b, file Form 8870

**7a** At any time during the tax year, was the foundation a party to a prohibited tax shelter transaction? . . . . .  Yes  No

**b** If "Yes," did the foundation receive any proceeds or have any net income attributable to the transaction? . . . . . **7b**  Yes  No

**Part VIII Information About Officers, Directors, Trustees, Foundation Managers, Highly Paid Employees, and Contractors**

**1 List all officers, directors, trustees, foundation managers and their compensation (see page 22 of the instructions).**

(a) Name and address	(b) Title, and average hours per week devoted to position	(c) Compensation (If not paid, enter -0-)	(d) Contributions to employee benefit plans and deferred compensation	(e) Expense account, other allowances
SEE STATEMENT 7		4,961.	-0-	-0-

**2 Compensation of five highest-paid employees (other than those included on line 1 - see page 23 of the instructions). If none, enter "NONE."**

(a) Name and address of each employee paid more than \$50,000	(b) Title, and average hours per week devoted to position	(c) Compensation	(d) Contributions to employee benefit plans and deferred compensation	(e) Expense account, other allowances
NONE		NONE	NONE	NONE

**Total number of other employees paid over \$50,000** . . . . .  NONE

**Part VIII Information About Officers, Directors, Trustees, Foundation Managers, Highly Paid Employees, and Contractors (continued)**

**3 Five highest-paid independent contractors for professional services (see page 23 of the instructions). If none, enter "NONE."**

(a) Name and address of each person paid more than \$50,000	(b) Type of service	(c) Compensation
NONE		NONE
Total number of others receiving over \$50,000 for professional services . . . . .		NONE

**Part IX-A Summary of Direct Charitable Activities**

List the foundation's four largest direct charitable activities during the tax year. Include relevant statistical information such as the number of organizations and other beneficiaries served, conferences convened, research papers produced, etc

	Expenses
1 NONE	
2	
3	
4	

**Part IX-B Summary of Program-Related Investments (see page 24 of the instructions)**

Describe the two largest program-related investments made by the foundation during the tax year on lines 1 and 2

	Amount
1 NONE	
2	
All other program-related investments See page 24 of the instructions	
3 NONE	
Total. Add lines 1 through 3 . . . . .	

**Part X Minimum Investment Return** (All domestic foundations must complete this part. Foreign foundations, see page 24 of the instructions.)

1	Fair market value of assets not used (or held for use) directly in carrying out charitable, etc., purposes		
a	Average monthly fair market value of securities	1a	381,259.
b	Average of monthly cash balances	1b	NONE
c	Fair market value of all other assets (see page 25 of the instructions)	1c	NONE
d	<b>Total</b> (add lines 1a, b, and c)	1d	381,259.
e	Reduction claimed for blockage or other factors reported on lines 1a and 1c (attach detailed explanation)	1e	
2	Acquisition indebtedness applicable to line 1 assets	2	NONE
3	Subtract line 2 from line 1d	3	381,259.
4	Cash deemed held for charitable activities Enter 1 1/2% of line 3 (for greater amount, see page 25 of the instructions)	4	5,719.
5	<b>Net value of noncharitable-use assets.</b> Subtract line 4 from line 3. Enter here and on Part V, line 4	5	375,540.
6	<b>Minimum investment return.</b> Enter 5% of line 5	6	18,777.

**Part XI Distributable Amount** (see page 25 of the instructions) (Section 4942(j)(3) and (j)(5) private operating foundations and certain foreign organizations check here  and do not complete this part.)

1	Minimum investment return from Part X, line 6	1	18,777.
2a	Tax on investment income for 2010 from Part VI, line 5	2a	636.
b	Income tax for 2010. (This does not include the tax from Part VI.)	2b	
c	Add lines 2a and 2b	2c	636.
3	Distributable amount before adjustments. Subtract line 2c from line 1	3	18,141.
4	Recoveries of amounts treated as qualifying distributions	4	NONE
5	Add lines 3 and 4	5	18,141.
6	Deduction from distributable amount (see page 25 of the instructions)	6	NONE
7	<b>Distributable amount as adjusted</b> Subtract line 6 from line 5. Enter here and on Part XIII, line 1	7	18,141.

**Part XII Qualifying Distributions** (see page 25 of the instructions)

1	Amounts paid (including administrative expenses) to accomplish charitable, etc., purposes		
a	Expenses, contributions, gifts, etc. - total from Part I, column (d), line 26	1a	17,969.
b	Program-related investments - total from Part IX-B	1b	
2	Amounts paid to acquire assets used (or held for use) directly in carrying out charitable, etc., purposes	2	NONE
3	Amounts set aside for specific charitable projects that satisfy the:		
a	Suitability test (prior IRS approval required)	3a	NONE
b	Cash distribution test (attach the required schedule)	3b	NONE
4	<b>Qualifying distributions.</b> Add lines 1a through 3b Enter here and on Part V, line 8, and Part XIII, line 4	4	17,969.
5	Foundations that qualify under section 4940(e) for the reduced rate of tax on net investment income. Enter 1% of Part I, line 27b (see page 26 of the instructions)	5	N/A
6	<b>Adjusted qualifying distributions.</b> Subtract line 5 from line 4	6	17,969.

**Note:** The amount on line 6 will be used in Part V, column (b), in subsequent years when calculating whether the foundation qualifies for the section 4940(e) reduction of tax in those years.

**Part XIII Undistributed Income** (see page 26 of the instructions)

	(a) Corpus	(b) Years prior to 2009	(c) 2009	(d) 2010
1 Distributable amount for 2010 from Part XI, line 7 . . . . .				18,141.
2 Undistributed income, if any, as of the end of 2010				
a Enter amount for 2009 only . . . . .			NONE	
b Total for prior years 20 <u>08</u> , 20 <u>    </u> , 20 <u>    </u>		NONE		
3 Excess distributions carryover, if any, to 2010.				
a From 2005 . . . . .				NONE
b From 2006 . . . . .				NONE
c From 2007 . . . . .				1,436.
d From 2008 . . . . .				13,678.
e From 2009 . . . . .				7,996.
f Total of lines 3a through e . . . . .	23,110.			
4 Qualifying distributions for 2010 from Part XII, line 4: ► \$ <u>17,969.</u>				
a Applied to 2009, but not more than line 2a . . . . .			NONE	
b Applied to undistributed income of prior years (Election required - see page 26 of the instructions) . . . . .		NONE		
c Treated as distributions out of corpus (Election required - see page 26 of the instructions) . . . . .	NONE			
d Applied to 2010 distributable amount . . . . .				17,969.
e Remaining amount distributed out of corpus . . . . .	NONE			
5 Excess distributions carryover applied to 2010 . . . . . (If an amount appears in column (d), the same amount must be shown in column (a) )	172.			172.
6 Enter the net total of each column as indicated below:				
a Corpus Add lines 3f, 4c, and 4e Subtract line 5	22,938.			
b Prior years' undistributed income. Subtract line 4b from line 2b . . . . .		NONE		
c Enter the amount of prior years' undistributed income for which a notice of deficiency has been issued, or on which the section 4942(a) tax has been previously assessed . . . . .		NONE		
d Subtract line 6c from line 6b Taxable amount - see page 27 of the instructions . . . . .		NONE		
e Undistributed income for 2009. Subtract line 4a from line 2a. Taxable amount - see page 27 of the instructions . . . . .			NONE	
f Undistributed income for 2010 Subtract lines 4d and 5 from line 1 This amount must be distributed in 2011. . . . .				
7 Amounts treated as distributions out of corpus to satisfy requirements imposed by section 170(b)(1)(F) or 4942(g)(3) (see page 27 of the instructions) . . . . .	NONE			
8 Excess distributions carryover from 2005 not applied on line 5 or line 7 (see page 27 of the instructions) . . . . .	NONE			
9 Excess distributions carryover to 2011. Subtract lines 7 and 8 from line 6a . . . . .	22,938.			
10 Analysis of line 9:				
a Excess from 2006 . . . . .				NONE
b Excess from 2007 . . . . .				1,264.
c Excess from 2008 . . . . .				13,678.
d Excess from 2009 . . . . .				7,996.
e Excess from 2010 . . . . .				

**Part XIV Private Operating Foundations** (see page 27 of the instructions and Part VII-A, question 9) NOT APPLICABLE

**1a** If the foundation has received a ruling or determination letter that it is a private operating foundation, and the ruling is effective for 2010, enter the date of the ruling . . . . . ▶

**b** Check box to indicate whether the foundation is a private operating foundation described in section 4942(j)(3) or 4942(j)(5)

	Tax year	Prior 3 years			(e) Total
	(a) 2010	(b) 2009	(c) 2008	(d) 2007	
<b>2a</b> Enter the lesser of the adjusted net income from Part I or the minimum investment return from Part X for each year listed . . . . .					
<b>b</b> 85% of line 2a . . . . .					
<b>c</b> Qualifying distributions from Part XII, line 4 for each year listed . . . . .					
<b>d</b> Amounts included in line 2c not used directly for active conduct of exempt activities . . . . .					
<b>e</b> Qualifying distributions made directly for active conduct of exempt activities Subtract line 2d from line 2c . . . . .					
<b>3</b> Complete 3a, b, or c for the alternative test relied upon					
<b>a</b> "Assets" alternative test - enter					
<b>(1)</b> Value of all assets . . . . .					
<b>(2)</b> Value of assets qualifying under section 4942(j)(3)(B)(i) . . . . .					
<b>b</b> "Endowment" alternative test - enter 2/3 of minimum investment return shown in Part X, line 6 for each year listed . . . . .					
<b>c</b> "Support" alternative test - enter					
<b>(1)</b> Total support other than gross investment income (interest, dividends, rents, payments on securities loans (section 512(a)(5)), or royalties) . . . . .					
<b>(2)</b> Support from general public and 5 or more exempt organizations as provided in section 4942(j)(3)(B)(iii) . . . . .					
<b>(3)</b> Largest amount of support from an exempt organization . . . . .					
<b>(4)</b> Gross investment income . . . . .					

**Part XV Supplementary Information** (Complete this part only if the foundation had \$5,000 or more in assets at any time during the year - see page 28 of the instructions.)

**1 Information Regarding Foundation Managers:**

**a** List any managers of the foundation who have contributed more than 2% of the total contributions received by the foundation before the close of any tax year (but only if they have contributed more than \$5,000). (See section 507(d)(2) )

N/A

**b** List any managers of the foundation who own 10% or more of the stock of a corporation (or an equally large portion of the ownership of a partnership or other entity) of which the foundation has a 10% or greater interest

N/A

**2 Information Regarding Contribution, Grant, Gift, Loan, Scholarship, etc., Programs:**

Check here  if the foundation only makes contributions to preselected charitable organizations and does not accept unsolicited requests for funds. If the foundation makes gifts, grants, etc. (see page 28 of the instructions) to individuals or organizations under other conditions, complete items 2a, b, c, and d.

**a** The name, address, and telephone number of the person to whom applications should be addressed

**b** The form in which applications should be submitted and information and materials they should include:

**c** Any submission deadlines:

**d** Any restrictions or limitations on awards, such as by geographical areas, charitable fields, kinds of institutions, or other factors:

**Part XV Supplementary Information (continued)**

**3 Grants and Contributions Paid During the Year or Approved for Future Payment**

Recipient Name and address (home or business)	If recipient is an individual, show any relationship to any foundation manager or substantial contributor	Foundation status of recipient	Purpose of grant or contribution	Amount
a <i>Paid during the year</i>  SEE STATEMENT 8				
<b>Total</b> ..... ▶ 3a				14,938.
b <i>Approved for future payment</i>				
<b>Total</b> ..... ▶ 3b				





**FORM 990-PF - PART IV  
CAPITAL GAINS AND LOSSES FOR TAX ON INVESTMENT INCOME**

Kind of Property		Description				P or D	Date acquired	Date sold
Gross sale price less expenses of sale	Depreciation allowed/ allowable	Cost or other basis	FMV as of 12/31/69	Adj. basis as of 12/31/69	Excess of FMV over adj basis		Gain or (loss)	
		TOTAL SHORT-TERM COMMON TRUST FUND AND PARTNERSHIP, S CORPORATION, AND OTHER ESTATES OR TRUST GAIN OR LOSS					-130.	
		TOTAL LONG-TERM CAPITAL GAIN DIVIDENDS					494.	
254.00		7.13 BLACKROCK US OPPORTUNITIES PORTFOLI PROPERTY TYPE: SECURITIES 265.00					06/25/2008 -11.00	03/26/2010
598.00		34. EATON VANCE LARGE CAP VALUE FUND - C PROPERTY TYPE: SECURITIES 422.00					02/18/2009 176.00	03/26/2010
124.00		6.944 FIDELITY ADVISOR NEW INSIGHTS FUND PROPERTY TYPE: SECURITIES 86.00					02/18/2009 38.00	03/26/2010
336.00		23.959 HUNTINGTON MID CORP AMERICA FD II PROPERTY TYPE: SECURITIES 230.00					03/26/2009 106.00	03/26/2010
783.00		45.829 HUNTINGTON SITUS FUND III PROPERTY TYPE: SECURITIES 808.00					03/06/2008 -25.00	03/26/2010
179.00		8.628 JANUS PERKINS MID CAP VALUE FUND - PROPERTY TYPE: SECURITIES 192.00					06/25/2008 -13.00	03/26/2010
414.00		45.716 PIMCO HIGH YIELD INSTITUTIONAL FU PROPERTY TYPE: SECURITIES 422.00					03/06/2008 -8.00	03/26/2010
770.00		58.266 TEMPLETON GLOBAL BOND FUND CLASS PROPERTY TYPE: SECURITIES 636.00					01/19/2007 134.00	03/26/2010
400.00		11.161 BLACKROCK US OPPORTUNITIES PORTFO PROPERTY TYPE: SECURITIES 414.00					06/25/2008 -14.00	05/10/2010

**FORM 990-PF - PART IV  
CAPITAL GAINS AND LOSSES FOR TAX ON INVESTMENT INCOME**

Kind of Property		Description				P or D	Date acquired	Date sold
Gross sale price less expenses of sale	Depreciation allowed/ allowable	Cost or other basis	FMV as of 12/31/69	Adj basis as of 12/31/69	Excess of FMV over adj basis		Gain or (loss)	
1,460.00		83.86 EATON VANCE LARGE CAP VALUE FUND - PROPERTY TYPE: SECURITIES 1,041.00				02/18/2009	05/10/2010 419.00	
785.00		43.904 FIDELITY ADVISOR NEW INSIGHTS FUN PROPERTY TYPE: SECURITIES 547.00				02/18/2009	05/10/2010 238.00	
400.00		28.031 HUNTINGTON MID CORP AMERICA FD II PROPERTY TYPE: SECURITIES 270.00				03/26/2009	05/10/2010 130.00	
1,230.00		120.588 HUNTINGTON INTL EQUITY FUND III PROPERTY TYPE: SECURITIES 1,689.00				03/06/2008	05/10/2010 -459.00	
695.00		40.035 HUNTINGTON SITUS FUND III PROPERTY TYPE: SECURITIES 706.00				03/06/2008	05/10/2010 -11.00	
400.00		60.883 HUNTINGTON REAL STRATEGIES FUND I PROPERTY TYPE: SECURITIES 694.00				06/25/2008	05/10/2010 -294.00	
400.00		19.12 JANUS PERKINS MID CAP VALUE FUND - PROPERTY TYPE: SECURITIES 425.00				06/25/2008	05/10/2010 -25.00	
2,240.00		244.809 HUNTINGTON MORTGAGE SECURITIES F PROPERTY TYPE: SECURITIES 2,142.00				05/29/2009	05/10/2010 98.00	
1,075.00		46.984 HUNTINGTON GROWTH FUND III PROPERTY TYPE: SECURITIES 849.00				02/18/2009	05/10/2010 226.00	
1,075.00		119.844 PIMCO HIGH YIELD INSTITUTIONAL F PROPERTY TYPE: SECURITIES 1,106.00				03/06/2008	05/10/2010 -31.00	
950.00		70.843 TEMPLETON GLOBAL BOND FUND CLASS PROPERTY TYPE: SECURITIES 774.00				01/19/2007	05/10/2010 176.00	

**FORM 990-PF - PART IV  
CAPITAL GAINS AND LOSSES FOR TAX ON INVESTMENT INCOME**

Kind of Property		Description				P or D	Date acquired	Date sold
Gross sale price less expenses of sale	Depreciation allowed/ allowable	Cost or other basis	FMV as of 12/31/69	Adj basis as of 12/31/69	Excess of FMV over adj basis		Gain or (loss)	
3,651.00		397.666 HUNTINGTON MORTGAGE SECURITIES F PROPERTY TYPE: SECURITIES 3,480.00				05/29/2009	06/25/2010 171.00	
477.00		53.69 PIMCO HIGH YIELD INSTITUTIONAL FUN PROPERTY TYPE: SECURITIES 496.00				03/06/2008	06/25/2010 -19.00	
417.00		32.045 TEMPLETON GLOBAL BOND FUND CLASS PROPERTY TYPE: SECURITIES 350.00				01/19/2007	06/25/2010 67.00	
5,000.00		299.401 EATON VANCE LARGE CAP VALUE FUND PROPERTY TYPE: SECURITIES 3,716.00				02/18/2009	08/04/2010 1,284.00	
7,000.00		666.032 HUNTINGTON INTL EQUITY FUND III PROPERTY TYPE: SECURITIES 9,331.00				03/06/2008	08/04/2010 -2,331.00	
5,000.00		218.627 HUNTINGTON GROWTH FUND III PROPERTY TYPE: SECURITIES 3,948.00				02/18/2009	08/04/2010 1,052.00	
5,000.00		304.322 EATON VANCE LARGE CAP VALUE FUND PROPERTY TYPE: SECURITIES 3,777.00				02/18/2009	09/23/2010 1,223.00	
1,000.00		71.429 HUNTINGTON MID CORP AMERICA FD II PROPERTY TYPE: SECURITIES 687.00				03/26/2009	09/23/2010 313.00	
5,000.00		467.727 HUNTINGTON INTL EQUITY FUND III PROPERTY TYPE: SECURITIES 6,553.00				03/06/2008	09/23/2010 -1,553.00	
4,000.00		241.546 HUNTINGTON SITUS FUND III PROPERTY TYPE: SECURITIES 4,323.00				06/25/2008	09/23/2010 -323.00	
4,000.00		167.225 HUNTINGTON GROWTH FUND III PROPERTY TYPE: SECURITIES 3,020.00				02/18/2009	09/23/2010 980.00	

**FORM 990-PF - PART IV  
CAPITAL GAINS AND LOSSES FOR TAX ON INVESTMENT INCOME**

Kind of Property		Description				P or D	Date acquired	Date sold
Gross sale price less expenses of sale	Depreciation allowed/ allowable	Cost or other basis	FMV as of 12/31/69	Adj basis as of 12/31/69	Excess of FMV over adj basis		Gain or (loss)	
15,000.00		864.055 EATON VANCE LARGE CAP VALUE FUND PROPERTY TYPE: SECURITIES 10,969.00				03/26/2009	11/19/2010 4,031.00	
10,000.00		510.725 FIDELITY ADVISOR NEW INSIGHTS FU PROPERTY TYPE: SECURITIES 6,359.00				02/18/2009	11/19/2010 3,641.00	
552.00		22.215 HUNTINGTON GROWTH FUND III PROPERTY TYPE: SECURITIES 521.00				03/26/2010	11/19/2010 31.00	
25,842.00		1039.499 HUNTINGTON GROWTH FUND III PROPERTY TYPE: SECURITIES 18,809.00				09/25/2009	11/19/2010 7,033.00	
1,123.00		45.164 HUNTINGTON GROWTH FUND III PROPERTY TYPE: SECURITIES 1,008.00				06/25/2010	11/19/2010 115.00	
7,500.00		439.883 EATON VANCE LARGE CAP VALUE FUND PROPERTY TYPE: SECURITIES 5,696.00				03/26/2009	11/30/2010 1,804.00	
7,500.00		385.802 FIDELITY ADVISOR NEW INSIGHTS FU PROPERTY TYPE: SECURITIES 4,803.00				02/18/2009	11/30/2010 2,697.00	
2,500.00		164.908 HUNTINGTON MID CORP AMERICA FD I PROPERTY TYPE: SECURITIES 1,586.00				03/26/2009	11/30/2010 914.00	
10,000.00		1089.325 HUNTINGTON MORTGAGE SECURITIES PROPERTY TYPE: SECURITIES 9,532.00				05/29/2009	11/30/2010 468.00	
2,995.00		74.627 BLACKROCK US OPPORTUNITIES PORTFO PROPERTY TYPE: SECURITIES 2,769.00				06/25/2008	12/08/2010 226.00	
5,023.00		282.646 EATON VANCE LARGE CAP VALUE FUND PROPERTY TYPE: SECURITIES 3,660.00				03/26/2009	12/08/2010 1,363.00	

**FORM 990-PF - PART IV  
CAPITAL GAINS AND LOSSES FOR TAX ON INVESTMENT INCOME**

Kind of Property		Description				P or D	Date acquired	Date sold
Gross sale price less expenses of sale	Depreciation allowed/ allowable	Cost or other basis	FMV as of 12/31/69	Adj. basis as of 12/31/69	Excess of FMV over adj basis		Gain or (loss)	
4,995.00		248.88						
		FIDELITY ADVISOR NEW INSIGHTS FUN PROPERTY TYPE: SECURITIES						
		3,099.00				02/18/2009	12/08/2010	
						1,896.00		
4,990.00		256.674						
		HUNTINGTON SITUS FUND III PROPERTY TYPE: SECURITIES						
		4,851.00				06/25/2008	12/08/2010	
						139.00		
2,981.00		388.098						
		HUNTINGTON REAL STRATEGIES FUND PROPERTY TYPE: SECURITIES						
		4,424.00				06/25/2008	12/08/2010	
						-1,443.00		
5,000.00		225.53						
		JANUS PERKINS MID CAP VALUE FUND PROPERTY TYPE: SECURITIES						
		4,760.00				12/26/2008	12/08/2010	
						240.00		
TOTAL GAIN (LOSS) .....							-----	
							25,233.	
							=====	

FORM 990PF, PART I - DIVIDENDS AND INTEREST FROM SECURITIES

DESCRIPTION	REVENUE AND EXPENSES PER BOOKS	NET INVESTMENT INCOME
APPLIED MATERIALS INC	2.	2.
BLACKROCK US OPPORTUNITIES PORTFOLIO - I	99.	99.
CENTURYTEL INC	25.	25.
DOMINION RES INC VA NEW COM	11.	11.
EATON VANCE LARGE CAP VALUE FUND - CLASS	566.	566.
FEDERATED TOTAL RETURN BOND FUND - INSTI	25.	25.
FIDELITY ADVISOR NEW INSIGHTS FUND - CL	81.	81.
FREEPORT MCMORAN COPPER & GOLD	50.	50.
HALLIBURTON CO	3.	3.
HEWLETT PACKARD CO.	4.	4.
HUNTINGTON MID CORP AMERICA FD III	4.	4.
HUNTINGTON DIVIDEND CAPTURE FUND I	83.	83.
HUNTINGTON INTL EQUITY FUND III	375.	375.
HUNTINGTON REAL STRATEGIES FUND III	57.	57.
JANUS PERKINS MID CAP VALUE FUND - CLASS	67.	67.
MCDONALDS CORP	15.	15.
HUNTINGTON MORTGAGE SECURITIES FUND I	2,711.	2,711.
MOLSON COORS BREWING CO B	7.	7.
HUNTINGTON INCOME EQUITY FUND I	109.	109.
HUNTINGTON CONSERVATIVE DEPOSIT ACCOUNT	55.	55.
NIKE INC CL B	11.	11.
OPPENHEIMER DEVELOPING MARKETS FUND - CL	11.	11.
PIMCO TOTAL RETURN FUND INSTL CLASS	176.	176.
PIMCO HIGH YIELD INSTITUTIONAL FUND	2,893.	2,893.
QUALCOMM INC	5.	5.
SUNCOR ENERGY INC	3.	3.
TEMPLETON GLOBAL BOND FUND CLASS A	1,076.	1,076.
FRANKLIN TEMPLETON GLOBAL BOND FUND - AD	509.	509.
THORNBURG INTERNATIONAL VALUE - I SHARES	15.	15.
TRAVELERS COS INC	13.	13.
V F CORP W/1 RT/SH	22.	22.
HUNTINGTON EQUITY PROTECTION STRATEGIC C	31.	31.

FORM 990PF, PART I - DIVIDENDS AND INTEREST FROM SECURITIES

=====

DESCRIPTION	REVENUE AND EXPENSES PER BOOKS	NET INVESTMENT INCOME
TOTAL	9,114.	9,114.

FORM 990PF, PART I - ACCOUNTING FEES  
=====

DESCRIPTION	REVENUE AND EXPENSES PER BOOKS	NET INVESTMENT INCOME	ADJUSTED NET INCOME	CHARITABLE PURPOSES
TAX PREPARATION FEE (NON-ALLOC)	550.			550.
TOTALS	550.	NONE	NONE	550.

FORM 990PF, PART I - TAXES  
=====

DESCRIPTION	REVENUE AND EXPENSES PER BOOKS	NET INVESTMENT INCOME
FOREIGN TAXES	1.	1.
FEDERAL TAX PAYMENT - PRIOR YE	63.	
FEDERAL ESTIMATES - PRINCIPAL	64.	
FOREIGN TAXES ON QUALIFIED FOR	69.	69.
FOREIGN TAXES ON NONQUALIFIED	20.	20.
TOTALS	217.	90.

FORM 990PF, PART II - OTHER INVESTMENTS

=====

DESCRIPTION	COST/ FMV C OR F	ENDING BOOK VALUE	ENDING FMV
SCHEDULE ATTACHED	C	364,700.	404,317.
NET CASH	C	2,916.	2,916.
TOTALS		367,616.	407,233.

=====

FORM 990PF, PART III - OTHER INCREASES IN NET WORTH OR FUND BALANCES

=====

DESCRIPTION  
-----

AMOUNT  
-----

NET INCOME BETWEEN TAX YEARS

19.

TOTAL

-----  
19.

=====

FORM 990PF, PART VIII - LIST OF OFFICERS, DIRECTORS, AND TRUSTEES

=====

OFFICER NAME:

HUNTINGTON NATIONAL BANK

ADDRESS:

P.O. BOX 1558 DEPT EA4E86  
COLUMBUS, OH 43216

TITLE:

TRUSTEE

AVERAGE HOURS PER WEEK DEVOTED TO POSITION: 40

COMPENSATION ..... 4,961.

TOTAL COMPENSATION: 4,961.

=====

=====

RECIPIENT NAME:  
RED CLOUD INDIAN SCHOOL  
ADDRESS:  
100 MISSION DRIVE  
PINE RIDGE, SD 57770  
RELATIONSHIP:  
NONE  
PURPOSE OF GRANT:  
SUPPORT PROGRAM  
FOUNDATION STATUS OF RECIPIENT:  
501C3  
AMOUNT OF GRANT PAID ..... 9,059.

RECIPIENT NAME:  
NATIONAL AMERICAN UNIVERSITY  
ADDRESS:  
5301 S HIGHWAY 16  
RAPID CITY, SD 57701  
RELATIONSHIP:  
NONE  
PURPOSE OF GRANT:  
EDUCATIONAL  
FOUNDATION STATUS OF RECIPIENT:  
EXEMPT  
AMOUNT OF GRANT PAID ..... 5,879.

TOTAL GRANTS PAID: ..... 14,938.  
=====



WILLIAM M. EWING CHARITABLE TRUST 8115002355  
 Schedule D Detail of Long-term Capital Gains and Losses

25-6580784

Description	Date Acquired	Date Sold	Gross Sales Price	Cost or Other Basis	Long-term Gain/Loss
<b>CAPITAL GAINS (LOSSES) HELD FOR INVESTMENT PURPOSES</b>					
7.13 BLACKROCK US					
OPPORTUNITIES PORTFOLIO - I	06/25/2008	03/26/2010	254.00	265.00	-11.00
34. EATON VANCE LARGE CAP					
VALUE FUND - CLASS	02/18/2009	03/26/2010	598.00	422.00	176.00
6.944 FIDELITY ADVISOR NEW					
INSIGHTS FUND - CL	02/18/2009	03/26/2010	124.00	86.00	38.00
45.829 HUNTINGTON SITUS	03/06/2008	03/26/2010	783.00	808.00	-25.00
8.628 JANUS PERKINS MID					
CAP VALUE FUND - CLASS	06/25/2008	03/26/2010	179.00	192.00	-13.00
45.716 PIMCO HIGH YIELD					
INSTITUTIONAL FUND	03/06/2008	03/26/2010	414.00	422.00	-8.00
58.266 TEMPLETON GLOBAL	01/19/2007	03/26/2010	770.00	636.00	134.00
11.161 BLACKROCK US					
OPPORTUNITIES PORTFOLIO - I	06/25/2008	05/10/2010	400.00	414.00	-14.00
83.86 EATON VANCE LARGE					
CAP VALUE FUND - CLASS	02/18/2009	05/10/2010	1,460.00	1,041.00	419.00
43.904 FIDELITY ADVISOR					
NEW INSIGHTS FUND - CL	02/18/2009	05/10/2010	785.00	547.00	238.00
28.031 HUNTINGTON MID CORP	03/26/2009	05/10/2010	400.00	270.00	130.00
120.588 HUNTINGTON INTL	03/06/2008	05/10/2010	1,230.00	1,689.00	-459.00
40.035 HUNTINGTON SITUS	03/06/2008	05/10/2010	695.00	706.00	-11.00
60.883 HUNTINGTON REAL					
STRATEGIES FUND III	06/25/2008	05/10/2010	400.00	694.00	-294.00
19.12 JANUS PERKINS MID					
CAP VALUE FUND - CLASS	06/25/2008	05/10/2010	400.00	425.00	-25.00
46.984 HUNTINGTON GROWTH	02/18/2009	05/10/2010	1,075.00	849.00	226.00
119.844 PIMCO HIGH YIELD					
INSTITUTIONAL FUND	03/06/2008	05/10/2010	1,075.00	1,106.00	-31.00
70.843 TEMPLETON GLOBAL	01/19/2007	05/10/2010	950.00	774.00	176.00
397.666 HUNTINGTON					
MORTGAGE SECURITIES FUND I	05/29/2009	06/25/2010	3,651.00	3,480.00	171.00
53.69 PIMCO HIGH YIELD	03/06/2008	06/25/2010	477.00	496.00	-19.00
<b>Totals</b>					

WILLIAM M. EWING CHARITABLE TRUST 8115002355  
 Schedule D Detail of Long-term Capital Gains and Losses

25-6580784

Description	Date Acquired	Date Sold	Gross Sales Price	Cost or Other Basis	Long-term Gain/Loss
32.045 TEMPLETON GLOBAL	01/19/2007	06/25/2010	417.00	350.00	67.00
299.401 EATON VANCE LARGE CAP VALUE FUND - CLASS	02/18/2009	08/04/2010	5,000.00	3,716.00	1,284.00
666.032 HUNTINGTON INTL	03/06/2008	08/04/2010	7,000.00	9,331.00	-2,331.00
218.627 HUNTINGTON GROWTH	02/18/2009	08/04/2010	5,000.00	3,948.00	1,052.00
304.322 EATON VANCE LARGE CAP VALUE FUND - CLASS	02/18/2009	09/23/2010	5,000.00	3,777.00	1,223.00
71.429 HUNTINGTON MID CORP	03/26/2009	09/23/2010	1,000.00	687.00	313.00
467.727 HUNTINGTON INTL	03/06/2008	09/23/2010	5,000.00	6,553.00	-1,553.00
241.546 HUNTINGTON SITUS	06/25/2008	09/23/2010	4,000.00	4,323.00	-323.00
167.225 HUNTINGTON GROWTH	02/18/2009	09/23/2010	4,000.00	3,020.00	980.00
864.055 EATON VANCE LARGE CAP VALUE FUND - CLASS	03/26/2009	11/19/2010	15,000.00	10,969.00	4,031.00
510.725 FIDELITY ADVISOR					
NEW INSIGHTS FUND - CL	02/18/2009	11/19/2010	10,000.00	6,359.00	3,641.00
1039.499 HUNTINGTON GROWTH	09/25/2009	11/19/2010	25,842.00	18,809.00	7,033.00
439.883 EATON VANCE LARGE CAP VALUE FUND - CLASS	03/26/2009	11/30/2010	7,500.00	5,696.00	1,804.00
385.802 FIDELITY ADVISOR					
NEW INSIGHTS FUND - CL	02/18/2009	11/30/2010	7,500.00	4,803.00	2,697.00
164.908 HUNTINGTON MID CORP AMERICA FD III	03/26/2009	11/30/2010	2,500.00	1,586.00	914.00
1089.325 HUNTINGTON MORTGAGE SECURITIES FUND I	05/29/2009	11/30/2010	10,000.00	9,532.00	468.00
74.627 BLACKROCK US OPPORTUNITIES PORTFOLIO - I	06/25/2008	12/08/2010	2,995.00	2,769.00	226.00
282.646 EATON VANCE LARGE CAP VALUE FUND - CLASS	03/26/2009	12/08/2010	5,023.00	3,660.00	1,363.00
248.88 FIDELITY ADVISOR					
NEW INSIGHTS FUND - CL	02/18/2009	12/08/2010	4,995.00	3,099.00	1,896.00
256.674 HUNTINGTON SITUS	06/25/2008	12/08/2010	4,990.00	4,851.00	139.00
388.098 HUNTINGTON REAL STRATEGIES FUND III	06/25/2008	12/08/2010	2,981.00	4,424.00	-1,443.00
225.53 JANUS PERKINS MID CAP VALUE FUND - CLASS	12/26/2008	12/08/2010	5,000.00	4,760.00	240.00
<b>Totals</b>					



FEDERAL CAPITAL GAIN DIVIDENDS

=====

LONG-TERM CAPITAL GAIN DIVIDENDS

-----

15% RATE CAPITAL GAIN DIVIDENDS

BLACKROCK US OPPORTUNITIES PORTFOLIO - I	128.00
HUNTINGTON MID CORP AMERICA FD III	292.00
PIMCO TOTAL RETURN FUND INSTL CLASS	74.00

-----

TOTAL 15% RATE CAPITAL GAIN DIVIDENDS 494.00

-----

TOTAL LONG-TERM CAPITAL GAIN DIVIDENDS 494.00

=====

GAINS AND LOSSES FROM PASS-THRU ENTITIES  
=====

NET SHORT-TERM GAIN (LOSS) FROM PARTNERSHIPS, S CORPORATIONS  
AND OTHER FIDUCIARIES

COMMON TRUST FUNDS -130.00

-----

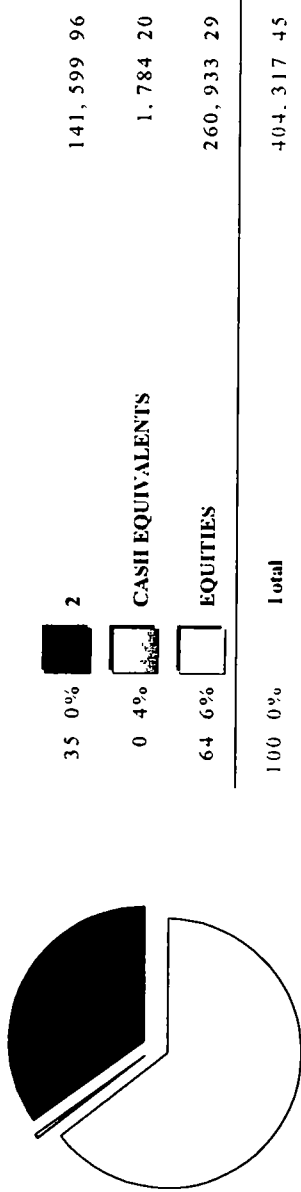
TOTAL NET SHORT-TERM GAIN OR LOSS (ROUNDED)

-----  
-130.00

=====

8115002355  
 SUMMARY OF INVESTMENTS  
 WILLIAM M. EWING CHARITABLE  
 REMAINDER UNITRUST

Investment Allocation



Investment Summary

	Market Value	%	Estimated Income	Current Yield
<b>CASH EQUIVALENTS</b>				
CASH MANAGEMENT FUNDS-TAXABLE	1,784.20	0.44	4	0.22
<b>HUNTINGTON FUNDS-FIXED</b>				
HUNTINGTON FUNDS-FIXED	65,671.93	16.24	2,363	3.60
<b>MUTUAL FUNDS FIXED INC-TAXABLE</b>				
MUTUAL FUNDS FIXED INC-TAXABLE	75,928.03	18.78	4,534	5.97
<b>TOTAL 2</b>	<b>141,599.96</b>	<b>35.02</b>	<b>6,897</b>	<b>4.87</b>
<b>EQUITIES</b>				
COMMON STOCK	95,511.00	23.62	2,147	2.25
COMMON STOCK-FOREIGN	6,575.50	1.63	228	3.47
HUNTINGTON FUNDS-EQUITY	92,351.85	22.84	852	0.92
MUTUAL FUNDS EQUITY	55,386.41	13.70	371	0.67
COMMON TRUST FD-EQUITY	11,108.53	2.75	0	0.00

**Investment Summary**

	Market Value	%	Estimated Income	Current Yield
<b>TOTAL EQUITIES</b>	260,933.29	64.54	3,598	1.38
<b>CASH</b>				
PRINCIPAL CASH				
<b>TOTAL FUND</b>	404,317.45	100.00	10,499	2.60

**SUMMARY OF INVESTED INCOME**

**Investment Summary**

	Market Value	%	Estimated Income	Current Yield
<b>CASH EQUIVALENTS</b>				
CASH MANAGEMENT FUNDS-TAXABLE	2,915.83	100.00	7	0.24
<b>CASH</b>				
INCOME CASH				
<b>TOTAL FUND</b>	2,915.83	100.00	7	0.24

**SCHEDULE OF INVESTMENTS**

UNITS/ SHARES	NAME OF SECURITY	TOT COST	EST INC	YLD MKT	MARKET % TOT VALUE MKT
	<b>CASH EQUIVALENTS</b>				
	<b>CASH MANAGEMENT FUNDS-TAXABLE</b>				
	HUNTINGTON CONSERVATIVE DEPOSIT ACCOUNT	1,784.20	4	0.2	1,784.20 0.441

**DULE OF INVESTMENTS**

8115002355

12/31/2010

PAGE 3

UNITS/ SHARES	NAME OF SECURITY	TOT COST	EST INC	YLD MKT	MARKET % TOT VALUE MKT
<b>HUNTINGTON FUNDS-FIXED</b>					
7.216 696	HUNTINGTON MORTGAGE SECURITIES FUND1	63,343 16	2,363	3 6	65,671 93 16 243
<b>MUTUAL FUNDS FIXED INC-TAXABLE</b>					
442 478	FEDERATED TOTAL RETURN BOND FUND - INSTITUTIONAL SHARES	5,000 00	218	4 4	4,933 63 1 220
435 161	PIMCO TOTAL RETURN FUND - INSTITUTIONAL CLASS	5,000 00	153	3 2	4,721 50 1 168
4,000 86	PIMCO HIGH YIELD FUND - INSTITUTIONAL CLASS	35,613 68	2,849	7 7	37,208 00 9 203
2,143 429	FRANKLIN TEMPLETON GLOBAL BOND FUND - ADVISOR CLASS	23,990 98	1,314	4 5	29,064 90 7 189
<b>TOTAL MUTUAL FUNDS FIXED INC-TAXABLE, 604 66*</b>					
<b>TOTAL 2</b>		132,947 82*	6,897*	4 9*	141,599 96* 35 022*
<b>EQUITIES</b>					
<b>COMMON STOCK</b>					
50	ABBOTT LABORATORIES	2,346 00	88	3 7	2,395 50 0 592
50	ALTRIA GROUP INC	1,225 30	76	6 2	1,231 00 0 304
50	AMERICAN EXPRESS	2,175 75	36	1 7	2,146 00 0 531
50	APPLIED MATERIALS INC	635 95	14	2 0	702 50 0 174
50	BAXTER INTERNATIONAL INC W/1 RT/SH	2,520 75	62	2 4	2,531 00 0 626
50	CARDINAL HEALTH INC	1,821 45	39	2 0	1,915 50 0 474
50	CATERPILLAR INC	4,275 50	88	1 9	4,683 00 1 158

12/31/2010

8115002355

## DULE OF INVESTMENTS

UNITS/ SHARES	NAME OF SECURITY	TOT COST	EST INC	YLD MKT	MARKET VALUE	% TOT MKT
50	CENTURYLINK INC	2,150 00	145 6 3		2,308 50	0 571
50	COACH INC W/1 RT/SH	2,767 90	30 1 1		2,765 50	0 684
50	DOMINION RESOURCLS INC/VA	2,114 20	92 4 3		2,136 00	0 528
50	EASTMAN CHEMICAL CO	3,993 50	94 2 2		4,204 00	1 040
50	EMERSON ELECTRIC CO	2,782 10	69 2 4		2,858 50	0 707
50	FISERV INC	2,848 15	0 0 0		2,928 00	0 724
50	FRFPORT-MCMORAN C & G W/1 RT/SH	5,156 90	100 1 7		6,004 50	1 485
50	HALLIBURTON CO	1,926 00	18 0 9		2,041 50	0 505
50	HEINZ H J CO	2,422 45	90 3 6		2,473 00	0 612
50	HEWLETT PACKARD CO	2,123 30	16 0 8		2,105 00	0 521
50	INTELL CORP	1,070 50	32 3 0		1,051 50	0 260
50	MCDONALDS CORP	3,947 90	122 3 2		3,838 00	0 949
50	MOLSON COORS BREWING CO B	2,447 60	56 2 2		2,509 50	0 621
50	NINE INC CL B	4,304 50	62 1 5		4,271 00	1 056
50	PARKER HANNIFIN CORP	4,110 74	58 1 3		4,315 00	1 067
50	PEPSICO INC	3,229 50	96 2 9		3,266 50	0 808
50	PROCTER & GAMBLE CO	3,153 25	96 3 0		3,216 50	0 796
50	QUALCOMM INC W 1 RT P/S EXP 9/25/2015	2,396 65	38 1 5		2,474 50	0 612

**DUPLICATE OF INVESTMENTS**

UNITS/ SHARES	NAME OF SECURITY	TOT COST	EST INC	YLD MKT	MARKET % TOT VALUE MKT
50	QUESTAR CORP	865 20	28 3 2		870 50 0 215
50	SCHLUMBERGER LTD	3,874 50	42 1 0		4,175 00 1 033
50	TEXAS INSTRUMENTS INC	1,620 80	26 1 6		1,625 00 0 402
50	TRAVELERS COS INC	2,752 55	72 2 6		2,785 50 0 689
50	UNION PACIFIC CORP	4,591 85	76 1 6		4,633 00 1 146
50	UNITED PARCEL SERVICE CL B	3,497 30	94 2 6		3,629 00 0 898
50	V F CORP W/1 RT/SH	4,164 05	126 2 9		4,309 00 1 066
50	ACEL LIMITED	2,994 32	66 2 1		3,112 50 0 770
	TOTAL COMMON STOCK	92,306 41*	2,147* 2 2*		95,511 00* 23 623*
	<b>COMMON STOCK-FOREIGN</b>				
50	ROYAL DUTCH SHELL PLC -ADR	3,200 00	143 4 3		3,339 00 0 826
50	SUNCOR ENERGY INC	1,738 65	20 1 0		1,914 50 0 474
50	VODAFONE GROUP PLC	1,311 75	65 4 9		1,322 00 0 327
	TOTAL COMMON STOCK-FOREIGN	6,250 40*	228* 3 5*		6,575 50* 1 626*
	<b>HUNTINGTON FUNDS-EQUITY</b>				
586 989	HUNTINGTON MID CORP AMERICA FUND III	5,714 11	4 0 0		9,174 64 2 269
610 501	HUNTINGTON DIVIDEND CAPTURE FUND I	5,000 00	191 3 6		5,305 25 1 312
3,323 503	HUNTINGTON INTERNATIONAL EQUITY FUND III	37,068 25	309 0 8		38,319 99 9 478

**DCHEDULE OF INVESTMENTS**

UNITS/ SHARES	NAME OF SECURITY	TOT COST	EST INC	YLD MKT	MARKET % TOT VALUE MKT
869 057	HUNTINGTON SIFUS FUND III	11,188 00	29 0 2		17,563 64 4 344
1,406 5	HUNTINGTON REAL STRATEGIES FUND III	11,215 20	0 0 0		11,237 94 2 779
530 098	HUNTINGTON INCOME EQUITY FUND I	10,000 00	319 3 0		10,750 39 2 659
	TOTAL HUNTINGTON FUNDS-EQUITY	80,185 56*	852* 0 9*		92,351 85* 22 841*
	<b>MUTUAL FUNDS EQUITY</b>				
259 077	BLACKROCK US OPPORTUNITIES PORTFOLIO - INSTITUTIONAL	6,732 01	18 0 2		10,692 11 2 644
1,028 833	EATON VANCE LARGE CAP VALUE FUND -CLASS I	14,051 34	235 1 3		18,796 78 4 649
640 201	FIDELITY ADVISOR NEW INSIGHTS FUND - CLASS I	9,559 35	10 0 1		12,893 65 3 189
333 042	JANUS PERKINS MID CAP VALUE FUND -CLASS I	4,953 63	67 0 9		7,516 76 1 859
61 69	OPPENHEIMER DEVELOPING MARKETS FUND - CLASS Y	2,000 00	9 0 4		2,225 16 0 550
113 895	THORNBERG INTERNATIONAL VALUE - I SHARES	3,000 00	32 1 0		3,261 95 0 807
	TOTAL MUTUAL FUNDS EQUITY	40,296 33*	371* 0 7*		55,386 41* 13 699*
	<b>COMMON TRUST FD-EQUITY</b>				
1,090 976	HUNTINGTON EQUITY PROTECTION STRATEGIC COMMON TRUST FUND	10,928 78	0 0 0		11,108 53 2 747
	TOTAL EQUITIES	229,967 48*	3,598* 1 4*		260,933 29* 64 537*

**DULE OF INVESTMENTS**

8115002355

12/31/2010

PAGE 7

UNITS/ SHARES	NAME OF SECURITY	TOT COST	EST INC	YLD MKT	MARKET % TOT VALUE MKT
	PRINCIPAL CASH	0 00	0 0	0 0	0 00 0 000
	<b>TOTAL FUND</b>	364 699 50*	10 499*	2 6*	404 317 45*100 000*

**SCHEDULE OF INCOME INVESTMENTS**

UNITS/ SHARES	NAME OF SECURITY	TOT COST	EST INC	YLD MKT	MARKET % TOT VALUE MKT
	<b>CASH EQUIVALENTS</b>				
	<b>CASH MANAGEMENT FUNDS-TAXABLE</b>				
	HUNTINGTON CONSERVATIVE DEPOSIT ACCOUNT	2 915 83	7 0 2	0 2	2 915 83 100 000
	INCOMI. CASH	0 00	0 0	0 0	0 00 0 000
	<b>TOTAL FUND</b>	2 915 83*	7* 0 2*	0 2*	2 915 83*100 000*