



See a Social Security Number? Say Something!
Report Privacy Problems to <https://public.resource.org/privacy>
Or call the IRS Identity Theft Hotline at 1-800-908-4490



Form **990****Return of Organization Exempt From Income Tax**

OMB No 1545-0047

2009Department of the Treasury
Internal Revenue ServiceUnder section 501(c), 527, or 4947(a)(1) of the Internal Revenue Code (except black lung
benefit trust or private foundation)Open to Public
Inspection

▶ The organization may have to use a copy of this return to satisfy state reporting requirements.

A For the 2009 calendar year, or tax year beginning **JUL 1, 2009** and ending **JUN 30, 2010****B** Check if
applicable

- ☐ Address
change
- ☐ Name
change
- ☐ Initial
return
- ☐ Termin-
ated
return
- ☐ Amend-
ed
return
- ☐ Applica-
tion
pending

Please
use IRS
label or
print or
typeSee
Specific
Instruc-
tions**C** Name of organization**DOWNTOWN SPECIAL SERVICES, INC.**

Doing Business As

Number and street (or P.O. box if mail is not delivered to street address)

ONE HSBC PLAZA

Room/suite

1910

City or town, state or country, and ZIP + 4

ROCHESTER, NY 14604**F** Name and address of principal officer: **ROBERT TAIT****850 CLINTON SQUARE, ROCHESTER, NY 14604****D** Employer identification number**16-1464168****E** Telephone number**(585) 263-6950****G** Gross receipts \$**510,892.****H(a)** Is this a group return

for affiliates?

☐ Yes☒ No**H(b)** Are all affiliates included?☐ Yes☐ No

If "No," attach a list. (see instructions)

H(c) Group exemption number ▶**I** Tax-exempt status: ☒ 501(c) (3) ◀ (insert no.) ☐ 4947(a)(1) or ☐ 527**J** Website: **WWW.ROCHESTERDOWNTOWN.COM****K** Form of organization: ☒ Corporation ☐ Trust ☐ Association ☐ Other ▶**L** Year of formation: **1994****M** State of legal domicile: **NY****Part I Summary**

Activities & Governance	1	Briefly describe the organization's mission or most significant activities: TO AID IN MAKING THE DOWNTOWN COMMUNITY OF ROCHESTER, NEW YORK, SAFER AND FRIENDLIER		
	2	Check this box <input type="checkbox"/> if the organization discontinued its operations or disposed of more than 25% of its net assets		
	3	Number of voting members of the governing body (Part VI, line 1a)	3	11
	4	Number of independent voting members of the governing body (Part VI, line 1b)	4	11
	5	Total number of employees (Part V, line 2a)	5	27
	6	Total number of volunteers (estimate if necessary)	6	0
	7a	Total gross unrelated business revenue from Part VIII, column (C), line 12	7a	0.
b	Net unrelated business taxable income from Form 990-T, line 34	7b	0.	
Revenue	8	Contributions and grants (Part VIII, line 1h)		
	9	Program service revenue (Part VIII, line 2g)	456,872.	510,773.
	10	Investment income (Part VIII, column (A), lines 3, 4, and 7d)	532.	119.
	11	Other revenue (Part VIII, column (A), lines 5, 6d, 8c, 9c, 10c, and 11e)		
	12	Total revenue - add lines 8 through 11 (must equal Part VIII, column (A), line 12)	457,404.	510,892.
Expenses	13	Grants and similar amounts paid (Part IX, column (A), lines 1-3)		
	14	Benefits paid to or for members (Part IX, column (A), line 4)		
	15	Salaries, other compensation, employee benefits (Part IX, column (A), lines 5-10)	355,741.	404,123.
	16a	Professional fundraising fees (Part IX, column (A), line 11e)		
	b	Total fundraising expenses (Part IX, column (D), line 25) ▶		
	17	Other expenses (Part IX, column (A), lines 11a-11d, 11f-11j)	116,154.	116,734.
	18	Total expenses. Add lines 13-17 (must equal Part IX, column (A), line 25)	471,895.	520,857.
19	Revenue less expenses. Subtract line 18 from line 12	<14,491.>	<9,965.>	
Net Assets or Fund Balances	20	Total assets (Part X, line 16)	46,345.	27,208.
	21	Total liabilities (Part X, line 26)	22,322.	13,150.
	22	Net assets or fund balances. Subtract line 21 from line 20	24,023.	14,058.

Part II Signature Block

Under penalties of perjury, I declare that I have examined this return, including accompanying schedules and statements, and to the best of my knowledge and belief, it is true, correct, and complete. Declaration of preparer (other than officer) is based on all information of which preparer has any knowledge.

Sign Here

Signature of officer

Date **11/11/10****ROBERT TAIT, PRESIDENT**

Type or print name and title

Paid Preparer's Use Only

Preparer's signature

Date

09/22/10Check if self-employed ☐

Preparer's identifying number (see instructions)

Firm's name (or yours if self-employed), address, and ZIP + 4

VIELE, SOLIMANO AND SWAGLER CPA PC**ONE EAST MAIN STREET****ROCHESTER, NEW YORK 14614-1807**

EIN ▶

Phone no. ▶ **(585) 232-2670**

May the IRS discuss this return with the preparer shown above? (see instructions)

☒ Yes☐ No

Part III Statement of Program Service Accomplishments

1 Briefly describe the organization's mission:

TO AID IN MAKING THE DOWNTOWN COMMUNITY OF ROCHESTER, NEW YORK, SAFER
AND FRIENDLIER

2 Did the organization undertake any significant program services during the year which were not listed on the prior Form 990 or 990-EZ?

☐ Yes ☒ No

If "Yes," describe these new services on Schedule O.

3 Did the organization cease conducting, or make significant changes in how it conducts, any program services?

☐ Yes ☒ No

If "Yes," describe these changes on Schedule O.

4 Describe the exempt purpose achievements for each of the organization's three largest program services by expenses. Section 501(c)(3) and 501(c)(4) organizations and section 4947(a)(1) trusts are required to report the amount of grants and allocations to others, the total expenses, and revenue, if any, for each program service reported.

4a (Code:) (Expenses \$ 485,382. including grants of \$) (Revenue \$ 510,773.)
SEE SCHEDULE ATTACHED

4b (Code:) (Expenses \$ including grants of \$) (Revenue \$)

4c (Code:) (Expenses \$ including grants of \$) (Revenue \$)

4d Other program services. (Describe in Schedule O.)

(Expenses \$ including grants of \$) (Revenue \$)

4e Total program service expenses \$ 485,382.

Part IV Checklist of Required Schedules

	Yes	No
1 Is the organization described in section 501(c)(3) or 4947(a)(1) (other than a private foundation)? <i>If "Yes," complete Schedule A</i>	X	
2 Is the organization required to complete Schedule B, Schedule of Contributors?		X
3 Did the organization engage in direct or indirect political campaign activities on behalf of or in opposition to candidates for public office? <i>If "Yes," complete Schedule C, Part I</i>		X
4 Section 501(c)(3) organizations. Did the organization engage in lobbying activities? <i>If "Yes," complete Schedule C, Part II</i>		X
5 Section 501(c)(4), 501(c)(5), and 501(c)(6) organizations. Is the organization subject to the section 6033(e) notice and reporting requirement and proxy tax? <i>If "Yes," complete Schedule C, Part III</i>		
6 Did the organization maintain any donor advised funds or any similar funds or accounts where donors have the right to provide advice on the distribution or investment of amounts in such funds or accounts? <i>If "Yes," complete Schedule D, Part I</i>		X
7 Did the organization receive or hold a conservation easement, including easements to preserve open space, the environment, historic land areas, or historic structures? <i>If "Yes," complete Schedule D, Part II</i>		X
8 Did the organization maintain collections of works of art, historical treasures, or other similar assets? <i>If "Yes," complete Schedule D, Part III</i>		X
9 Did the organization report an amount in Part X, line 21; serve as a custodian for amounts not listed in Part X, or provide credit counseling, debt management, credit repair, or debt negotiation services? <i>If "Yes," complete Schedule D, Part IV</i>		X
10 Did the organization, directly or through a related organization, hold assets in term, permanent, or quasi-endowments? <i>If "Yes," complete Schedule D, Part V</i>		X
11 Is the organization's answer to any of the following questions "Yes"? <i>If so, complete Schedule D, Parts VI, VII, VIII, IX, or X as applicable</i>	X	
• Did the organization report an amount for land, buildings, and equipment in Part X, line 10? <i>If "Yes," complete Schedule D, Part VI.</i>		
• Did the organization report an amount for investments - other securities in Part X, line 12 that is 5% or more of its total assets reported in Part X, line 16? <i>If "Yes," complete Schedule D, Part VII.</i>		
• Did the organization report an amount for investments - program related in Part X, line 13 that is 5% or more of its total assets reported in Part X, line 16? <i>If "Yes," complete Schedule D, Part VIII.</i>		
• Did the organization report an amount for other assets in Part X, line 15 that is 5% or more of its total assets reported in Part X, line 16? <i>If "Yes," complete Schedule D, Part IX.</i>		
• Did the organization report an amount for other liabilities in Part X, line 25? <i>If "Yes," complete Schedule D, Part X.</i>		
• Did the organization's separate or consolidated financial statements for the tax year include a footnote that addresses the organization's liability for uncertain tax positions under FIN 48? <i>If "Yes," complete Schedule D, Part X.</i>		
12 Did the organization obtain separate, independent audited financial statements for the tax year? <i>If "Yes," complete Schedule D, Parts XI, XII, and XIII.</i>	X	
12A Was the organization included in consolidated, independent audited financial statements for the tax year? <i>If "Yes," completing Schedule D, Parts XI, XII, and XIII is optional</i>	X	
13 Is the organization a school described in section 170(b)(1)(A)(ii)? <i>If "Yes," complete Schedule E</i>		X
14a Did the organization maintain an office, employees, or agents outside of the United States?		X
b Did the organization have aggregate revenues or expenses of more than \$10,000 from grantmaking, fundraising, business, and program service activities outside the United States? <i>If "Yes," complete Schedule F, Part I</i>		X
15 Did the organization report on Part IX, column (A), line 3, more than \$5,000 of grants or assistance to any organization or entity located outside the United States? <i>If "Yes," complete Schedule F, Part II</i>		X
16 Did the organization report on Part IX, column (A), line 3, more than \$5,000 of aggregate grants or assistance to individuals located outside the United States? <i>If "Yes," complete Schedule F, Part III</i>		X
17 Did the organization report a total of more than \$15,000 of expenses for professional fundraising services on Part IX, column (A), lines 6 and 11e? <i>If "Yes," complete Schedule G, Part I</i>		X
18 Did the organization report more than \$15,000 total of fundraising event gross income and contributions on Part VIII, lines 1c and 8a? <i>If "Yes," complete Schedule G, Part II</i>		X
19 Did the organization report more than \$15,000 of gross income from gaming activities on Part VIII, line 9a? <i>If "Yes," complete Schedule G, Part III</i>		X
20 Did the organization operate one or more hospitals? <i>If "Yes," complete Schedule H</i>		X

Part IV Checklist of Required Schedules (continued)

	Yes	No
21 Did the organization report more than \$5,000 of grants and other assistance to governments and organizations in the United States on Part IX, column (A), line 1? <i>If "Yes," complete Schedule I, Parts I and II</i>		X
22 Did the organization report more than \$5,000 of grants and other assistance to individuals in the United States on Part IX, column (A), line 2? <i>If "Yes," complete Schedule I, Parts I and III</i>		X
23 Did the organization answer "Yes" to Part VII, Section A, line 3, 4, or 5 about compensation of the organization's current and former officers, directors, trustees, key employees, and highest compensated employees? <i>If "Yes," complete Schedule J</i>		X
24a Did the organization have a tax-exempt bond issue with an outstanding principal amount of more than \$100,000 as of the last day of the year, that was issued after December 31, 2002? <i>If "Yes," answer lines 24b through 24d and complete Schedule K. If "No," go to line 25</i>		X
24b Did the organization invest any proceeds of tax-exempt bonds beyond a temporary period exception?		
24c Did the organization maintain an escrow account other than a refunding escrow at any time during the year to defease any tax-exempt bonds?		
24d Did the organization act as an "on behalf of" issuer for bonds outstanding at any time during the year?		
25a Section 501(c)(3) and 501(c)(4) organizations. Did the organization engage in an excess benefit transaction with a disqualified person during the year? <i>If "Yes," complete Schedule L, Part I</i>		X
25b Is the organization aware that it engaged in an excess benefit transaction with a disqualified person in a prior year, and that the transaction has not been reported on any of the organization's prior Forms 990 or 990-EZ? <i>If "Yes," complete Schedule L, Part I</i>		X
26 Was a loan to or by a current or former officer, director, trustee, key employee, highly compensated employee, or disqualified person outstanding as of the end of the organization's tax year? <i>If "Yes," complete Schedule L, Part II</i>		X
27 Did the organization provide a grant or other assistance to an officer, director, trustee, key employee, substantial contributor, or a grant selection committee member, or to a person related to such an individual? <i>If "Yes," complete Schedule L, Part III</i>		X
28 Was the organization a party to a business transaction with one of the following parties, (see Schedule L, Part IV instructions for applicable filing thresholds, conditions, and exceptions):		
28a A current or former officer, director, trustee, or key employee? <i>If "Yes," complete Schedule L, Part IV</i>		X
28b A family member of a current or former officer, director, trustee, or key employee? <i>If "Yes," complete Schedule L, Part IV</i>		X
28c An entity of which a current or former officer, director, trustee, or key employee of the organization (or a family member) was an officer, director, trustee, or direct or indirect owner? <i>If "Yes," complete Schedule L, Part IV</i>		X
29 Did the organization receive more than \$25,000 in non-cash contributions? <i>If "Yes," complete Schedule M</i>		X
30 Did the organization receive contributions of art, historical treasures, or other similar assets, or qualified conservation contributions? <i>If "Yes," complete Schedule M</i>		X
31 Did the organization liquidate, terminate, or dissolve and cease operations? <i>If "Yes," complete Schedule N, Part I</i>		X
32 Did the organization sell, exchange, dispose of, or transfer more than 25% of its net assets? <i>If "Yes," complete Schedule N, Part II</i>		X
33 Did the organization own 100% of an entity disregarded as separate from the organization under Regulations sections 301.7701-2 and 301.7701-3? <i>If "Yes," complete Schedule R, Part I</i>		X
34 Was the organization related to any tax-exempt or taxable entity? <i>If "Yes," complete Schedule R, Parts II, III, IV, and V, line 1</i>	X	
35 Is any related organization a controlled entity within the meaning of section 512(b)(13)? <i>If "Yes," complete Schedule R, Part V, line 2</i>		X
36 Section 501(c)(3) organizations. Did the organization make any transfers to an exempt non-charitable related organization? <i>If "Yes," complete Schedule R, Part V, line 2</i>	X	
37 Did the organization conduct more than 5% of its activities through an entity that is not a related organization and that is treated as a partnership for federal income tax purposes? <i>If "Yes," complete Schedule R, Part VI</i>		X
38 Did the organization complete Schedule O and provide explanations in Schedule O for Part VI, lines 11 and 19?		

Note. All Form 990 filers are required to complete Schedule O

Part VI Governance, Management, and Disclosure For each "Yes" response to lines 2 through 7b below, and for a "No" response to line 8a, 8b, or 10b below, describe the circumstances, processes, or changes in Schedule O. See instructions.

Section A. Governing Body and Management

	Yes	No
1a Enter the number of voting members of the governing body	11	
b Enter the number of voting members that are independent	11	
2 Did any officer, director, trustee, or key employee have a family relationship or a business relationship with any other officer, director, trustee, or key employee?		X
3 Did the organization delegate control over management duties customarily performed by or under the direct supervision of officers, directors or trustees, or key employees to a management company or other person?	X	
4 Did the organization make any significant changes to its organizational documents since the prior Form 990 was filed?		X
5 Did the organization become aware during the year of a material diversion of the organization's assets?		X
6 Does the organization have members or stockholders?		X
7a Does the organization have members, stockholders, or other persons who may elect one or more members of the governing body?		X
b Are any decisions of the governing body subject to approval by members, stockholders, or other persons?		X
8 Did the organization contemporaneously document the meetings held or written actions undertaken during the year by the following:		
a The governing body?	X	
b Each committee with authority to act on behalf of the governing body?	X	
9 Is there any officer, director, trustee, or key employee listed in Part VII, Section A, who cannot be reached at the organization's mailing address? If "Yes," provide the names and addresses in Schedule O		X

Section B. Policies (This Section B requests information about policies not required by the Internal Revenue Code)

	Yes	No
10a Does the organization have local chapters, branches, or affiliates?		X
b If "Yes," does the organization have written policies and procedures governing the activities of such chapters, affiliates, and branches to ensure their operations are consistent with those of the organization?		
11 Has the organization provided a copy of this Form 990 to all members of its governing body before filing the form?		X
11A Describe in Schedule O the process, if any, used by the organization to review this Form 990		
12a Does the organization have a written conflict of interest policy? If "No," go to line 13	X	
b Are officers, directors or trustees, and key employees required to disclose annually interests that could give rise to conflicts?		X
c Does the organization regularly and consistently monitor and enforce compliance with the policy? If "Yes," describe in Schedule O how this is done		X
13 Does the organization have a written whistleblower policy?	X	
14 Does the organization have a written document retention and destruction policy?		X
15 Did the process for determining compensation of the following persons include a review and approval by independent persons, comparability data, and contemporaneous substantiation of the deliberation and decision?		
a The organization's CEO, Executive Director, or top management official		X
b Other officers or key employees of the organization		X
If "Yes" to line 15a or 15b, describe the process in Schedule O (See instructions.)		
16a Did the organization invest in, contribute assets to, or participate in a joint venture or similar arrangement with a taxable entity during the year?		X
b If "Yes," has the organization adopted a written policy or procedure requiring the organization to evaluate its participation in joint venture arrangements under applicable federal tax law, and taken steps to safeguard the organization's exempt status with respect to such arrangements?		

Section C. Disclosure

17 List the states with which a copy of this Form 990 is required to be filed **NY**

18 Section 6104 requires an organization to make its Forms 1023 (or 1024 if applicable), 990, and 990-T (501(c)(3)s only) available for public inspection. Indicate how you make these available. Check all that apply
☐ Own website ☒ Another's website ☒ Upon request

19 Describe in Schedule O whether (and if so, how), the organization makes its governing documents, conflict of interest policy, and financial statements available to the public.

20 State the name, physical address, and telephone number of the person who possesses the books and records of the organization. **HEIDI ZIMMER-MEYER - 585-546-6920**
100 CHESTNUT STRET, SUITE 1910, ROCHESTER, NY 14604

Part VII Compensation of Officers, Directors, Trustees, Key Employees, Highest Compensated Employees, and Independent Contractors
Section A. Officers, Directors, Trustees, Key Employees, and Highest Compensated Employees

1a Complete this table for all persons required to be listed. Report compensation for the calendar year ending with or within the organization's tax year. Use Schedule J-2 if additional space is needed.

• List all of the organization's **current** officers, directors, trustees (whether individuals or organizations), regardless of amount of compensation. Enter -0- in columns (D), (E), and (F) if no compensation was paid.

• List all of the organization's **current** key employees. See instructions for definition of "key employee."

• List the organization's five **current** highest compensated employees (other than an officer, director, trustee, or key employee) who received reportable compensation (Box 5 of Form W-2 and/or Box 7 of Form 1099-MISC) of more than \$100,000 from the organization and any related organizations.

• List all of the organization's **former** officers, key employees, and highest compensated employees who received more than \$100,000 of reportable compensation from the organization and any related organizations.

• List all of the organization's **former** directors or trustees that received, in the capacity as a former director or trustee of the organization, more than \$10,000 of reportable compensation from the organization and any related organizations.

List persons in the following order: individual trustees or directors; institutional trustees; officers; key employees; highest compensated employees; and former such persons.

☒ Check this box if the organization did not compensate any current officer, director, or trustee

(A) Name and Title	(B) Average hours per week	(C) Position (check all that apply)						(D) Reportable compensation from the organization (W-2/1099-MISC)	(E) Reportable compensation from related organizations (W-2/1099-MISC)	(F) Estimated amount of other compensation from the organization and related organizations
		Individual trustee or director	Institutional trustee	Officer	Key employee	Highest compensated employee	Former			
JEFFREY CALKINS DIRECTOR	0.30	X						0.	0.	0.
WILLIAM ANSBROW DIRECTOR	0.30	X						0.	0.	0.
JEANNE FROEHLER DIRECTOR	0.30	X						0.	0.	0.
GREG MARSHALL DIRECTOR	0.30	X						0.	0.	0.
CAROLYN PORTANOVA DIRECTOR	0.30	X						0.	0.	0.
MARK CLEARY DIRECTOR	0.30	X						0.	0.	0.
MICHAEL CIMINELLI DIRECTOR	0.30	X						0.	0.	0.
JOY HOUSE TREASURER	0.50			X				0.	0.	0.
JOSEPH FLOREANO VICE PRESIDENT	0.50			X				0.	0.	0.
ROBERT TAIT PRESIDENT	0.50			X				0.	0.	0.
VICENT MCINTYRE SECRETARY	0.50			X				0.	0.	0.

Part VII Section A. Officers, Directors, Trustees, Key Employees, and Highest Compensated Employees (continued)

(A) Name and title	(B) Average hours per week	(C) Position (check all that apply)						(D) Reportable compensation from the organization (W-2/1099-MISC)	(E) Reportable compensation from related organizations (W-2/1099-MISC)	(F) Estimated amount of other compensation from the organization and related organizations
		Individual trustee or director	Institutional trustee	Officer	Key employee	Highest compensated employee	Former			
1b Total								0.	0.	0.

2 Total number of individuals (including but not limited to those listed above) who received more than \$100,000 in reportable compensation from the organization **0**

	Yes	No
3 Did the organization list any former officer, director or trustee, key employee, or highest compensated employee on line 1a? <i>If "Yes," complete Schedule J for such individual</i>		X
4 For any individual listed on line 1a, is the sum of reportable compensation and other compensation from the organization and related organizations greater than \$150,000? <i>If "Yes," complete Schedule J for such individual</i>		X
5 Did any person listed on line 1a receive or accrue compensation from any unrelated organization for services rendered to the organization? <i>If "Yes," complete Schedule J for such person</i>		X

Section B. Independent Contractors

1 Complete this table for your five highest compensated independent contractors that received more than \$100,000 of compensation from the organization. **NONE**

(A) Name and business address	(B) Description of services	(C) Compensation

2 Total number of independent contractors (including but not limited to those listed above) who received more than \$100,000 in compensation from the organization **0**

Part VIII Statement of Revenue

				(A) Total revenue	(B) Related or exempt function revenue	(C) Unrelated business revenue	(D) Revenue excluded from tax under sections 512, 513, or 514
Contributions, gifts, grants and other similar amounts	1 a Federated campaigns	1a					
	b Membership dues	1b					
	c Fundraising events	1c					
	d Related organizations	1d					
	e Government grants (contributions)	1e					
	f All other contributions, gifts, grants, and similar amounts not included above	1f					
	g Noncash contributions included in lines 1a-1f \$						
	h Total. Add lines 1a-1f						
Program Service Revenue	2 a ASSESSMENT DISTRICT FU	Business Code	900099	509,039.	509,039.		
	b WEBSITE SPONSORSHIPS		900099	1,734.	1,734.		
	c						
	d						
	e						
	f All other program service revenue						
	g Total. Add lines 2a-2f			510,773.			
Other Revenue	3 Investment income (including dividends, interest, and other similar amounts)			119.			119.
	4 Income from investment of tax-exempt bond proceeds						
	5 Royalties						
	6 a Gross Rents	(i) Real	(ii) Personal				
	b Less: rental expenses						
	c Rental income or (loss)						
	d Net rental income or (loss)						
	7 a Gross amount from sales of assets other than inventory	(i) Securities	(ii) Other				
	b Less: cost or other basis and sales expenses						
	c Gain or (loss)						
	d Net gain or (loss)						
	8 a Gross income from fundraising events (not including \$ _____ of contributions reported on line 1c). See Part IV, line 18	a					
	b Less: direct expenses	b					
	c Net income or (loss) from fundraising events						
	9 a Gross income from gaming activities. See Part IV, line 19	a					
	b Less: direct expenses	b					
	c Net income or (loss) from gaming activities						
	10 a Gross sales of inventory, less returns and allowances	a					
	b Less: cost of goods sold	b					
c Net income or (loss) from sales of inventory							
Miscellaneous Revenue			Business Code				
11 a							
b							
c							
d All other revenue							
e Total. Add lines 11a-11d							
12 Total revenue. See instructions.				510,892.	510,773.	0.	119.

Part IX Statement of Functional Expenses

Section 501(c)(3) and 501(c)(4) organizations must complete all columns.

All other organizations must complete column (A) but are not required to complete columns (B), (C), and (D).

Do not include amounts reported on lines 6b, 7b, 8b, 9b, and 10b of Part VIII.	(A) Total expenses	(B) Program service expenses	(C) Management and general expenses	(D) Fundraising expenses
1 Grants and other assistance to governments and organizations in the U.S. See Part IV, line 21				
2 Grants and other assistance to individuals in the U.S. See Part IV, line 22				
3 Grants and other assistance to governments, organizations, and individuals outside the U.S. See Part IV, lines 15 and 16				
4 Benefits paid to or for members				
5 Compensation of current officers, directors, trustees, and key employees				
6 Compensation not included above, to disqualified persons (as defined under section 4958(f)(1)) and persons described in section 4958(c)(3)(B)				
7 Other salaries and wages	355,134.	355,134.		
8 Pension plan contributions (include section 401(k) and section 403(b) employer contributions)				
9 Other employee benefits	13,143.	13,143.		
10 Payroll taxes	35,846.	35,846.		
11 Fees for services (non-employees):				
a Management	48,000.	20,870.	27,130.	
b Legal				
c Accounting	6,494.		6,494.	
d Lobbying				
e Professional fundraising services. See Part IV, line 17				
f Investment management fees				
g Other				
12 Advertising and promotion				
13 Office expenses	633.	633.		
14 Information technology	5,398.	5,398.		
15 Royalties				
16 Occupancy	27,014.	27,014.		
17 Travel				
18 Payments of travel or entertainment expenses for any federal, state, or local public officials				
19 Conferences, conventions, and meetings				
20 Interest				
21 Payments to affiliates				
22 Depreciation, depletion, and amortization	11,023.	11,023.		
23 Insurance	7,036.	5,185.	1,851.	
24 Other expenses. Itemize expenses not covered above. (Expenses grouped together and labeled miscellaneous may not exceed 5% of total expenses shown on line 25 below.)				
a <u>UNIFORMS AND SUPPLIES</u>	7,277.	7,277.		
b <u>PRINTING & PUBLICATIONS</u>	3,196.	3,196.		
c <u>MISCELLANEOUS EXPENSE</u>	663.	663.		
d _____				
e _____				
f All other expenses _____				
25 Total functional expenses. Add lines 1 through 24f	520,857.	485,382.	35,475.	0.
26 Joint costs. Check here <input type="checkbox"/> if following SOP 98-2. Complete this line only if the organization reported in column (B) joint costs from a combined educational campaign and fundraising solicitation				

Part X Balance Sheet

		(A) Beginning of year		(B) End of year
Assets	1 Cash - non-interest-bearing	9,935.	1	<1.>
	2 Savings and temporary cash investments	8,325.	2	3,404.
	3 Pledges and grants receivable, net		3	
	4 Accounts receivable, net		4	8,512.
	5 Receivables from current and former officers, directors, trustees, key employees, and highest compensated employees. Complete Part II of Schedule L		5	
	6 Receivables from other disqualified persons (as defined under section 4958(f)(1)) and persons described in section 4958(c)(3)(B). Complete Part II of Schedule L		6	
	7 Notes and loans receivable, net		7	
	8 Inventories for sale or use		8	
	9 Prepaid expenses and deferred charges	3,240.	9	1,612.
	10a Land, buildings, and equipment: cost or other basis. Complete Part VI of Schedule D	10a 125,635.		
	b Less: accumulated depreciation	10b 113,378.	10c	12,257.
	11 Investments - publicly traded securities		11	
	12 Investments - other securities. See Part IV, line 11		12	
	13 Investments - program-related. See Part IV, line 11		13	
	14 Intangible assets		14	
	15 Other assets. See Part IV, line 11	2,124.	15	1,424.
	16 Total assets. Add lines 1 through 15 (must equal line 34)	46,345.	16	27,208.
Liabilities	17 Accounts payable and accrued expenses		17	7,752.
	18 Grants payable		18	
	19 Deferred revenue	13,990.	19	858.
	20 Tax-exempt bond liabilities		20	
	21 Escrow or custodial account liability. Complete Part IV of Schedule D		21	
	22 Payables to current and former officers, directors, trustees, key employees, highest compensated employees, and disqualified persons. Complete Part II of Schedule L		22	
	23 Secured mortgages and notes payable to unrelated third parties		23	
	24 Unsecured notes and loans payable to unrelated third parties		24	
	25 Other liabilities. Complete Part X of Schedule D	8,332.	25	4,540.
	26 Total liabilities. Add lines 17 through 25	22,322.	26	13,150.
Net Assets or Fund Balances	Organizations that follow SFAS 117, check here <input checked="" type="checkbox"/> and complete lines 27 through 29, and lines 33 and 34.			
	27 Unrestricted net assets	24,023.	27	14,058.
	28 Temporarily restricted net assets		28	
	29 Permanently restricted net assets		29	
	Organizations that do not follow SFAS 117, check here <input type="checkbox"/> and complete lines 30 through 34.			
	30 Capital stock or trust principal, or current funds		30	
	31 Paid-in or capital surplus, or land, building, or equipment fund		31	
	32 Retained earnings, endowment, accumulated income, or other funds		32	
	33 Total net assets or fund balances	24,023.	33	14,058.
	34 Total liabilities and net assets/fund balances	46,345.	34	27,208.

Part XI Financial Statements and Reporting

- 1** Accounting method used to prepare the Form 990. ☐ Cash ☒ Accrual ☐ Other _____
If the organization changed its method of accounting from a prior year or checked "Other," explain in Schedule O.
- 2a** Were the organization's financial statements compiled or reviewed by an independent accountant?
- b** Were the organization's financial statements audited by an independent accountant?
- c** If "Yes" to line 2a or 2b, does the organization have a committee that assumes responsibility for oversight of the audit, review, or compilation of its financial statements and selection of an independent accountant?
If the organization changed either its oversight process or selection process during the tax year, explain in Schedule O.
- d** If "Yes" to line 2a or 2b, check a box below to indicate whether the financial statements for the year were issued on a consolidated basis, separate basis, or both:
☒ Separate basis ☐ Consolidated basis ☐ Both consolidated and separate basis
- 3a** As a result of a federal award, was the organization required to undergo an audit or audits as set forth in the Single Audit Act and OMB Circular A-133?
- b** If "Yes," did the organization undergo the required audit or audits? If the organization did not undergo the required audit or audits, explain why in Schedule O and describe any steps taken to undergo such audits

	Yes	No
2a		X
2b	X	
2c		X
3a		X
3b		

Form **990** (2009)

Part II Support Schedule for Organizations Described in Sections 170(b)(1)(A)(iv) and 170(b)(1)(A)(vi)

(Complete only if you checked the box on line 5, 7, or 8 of Part I.)

Section A. Public Support

Calendar year (or fiscal year beginning in)	(a) 2005	(b) 2006	(c) 2007	(d) 2008	(e) 2009	(f) Total
1 Gifts, grants, contributions, and membership fees received. (Do not include any "unusual grants.")						
2 Tax revenues levied for the organization's benefit and either paid to or expended on its behalf	279,370.	295,111.	435,378.	456,872.	510,773.	1,977,504.
3 The value of services or facilities furnished by a governmental unit to the organization without charge						
4 Total. Add lines 1 through 3	279,370.	295,111.	435,378.	456,872.	510,773.	1,977,504.
5 The portion of total contributions by each person (other than a governmental unit or publicly supported organization) included on line 1 that exceeds 2% of the amount shown on line 11, column (f)						
6 Public support. Subtract line 5 from line 4						1,977,504.

Section B. Total Support

Calendar year (or fiscal year beginning in)	(a) 2005	(b) 2006	(c) 2007	(d) 2008	(e) 2009	(f) Total
7 Amounts from line 4	279,370.	295,111.	435,378.	456,872.	510,773.	1,977,504.
8 Gross income from interest, dividends, payments received on securities loans, rents, royalties and income from similar sources	476.	483.	691.	389.	119.	2,158.
9 Net income from unrelated business activities, whether or not the business is regularly carried on						
10 Other income. Do not include gain or loss from the sale of capital assets (Explain in Part IV)						
11 Total support. Add lines 7 through 10						1,979,662.
12 Gross receipts from related activities, etc. (see instructions)					12	
13 First five years. If the Form 990 is for the organization's first, second, third, fourth, or fifth tax year as a section 501(c)(3) organization, check this box and stop here						<input type="checkbox"/>

Section C. Computation of Public Support Percentage

14 Public support percentage for 2009 (line 6, column (f) divided by line 11, column (f))	14	99.89	%
15 Public support percentage from 2008 Schedule A, Part II, line 14	15	99.85	%
16a 33 1/3% support test - 2009. If the organization did not check the box on line 13, and line 14 is 33 1/3% or more, check this box and stop here. The organization qualifies as a publicly supported organization			<input checked="" type="checkbox"/>
b 33 1/3% support test - 2008. If the organization did not check a box on line 13 or 16a, and line 15 is 33 1/3% or more, check this box and stop here. The organization qualifies as a publicly supported organization			<input type="checkbox"/>
17a 10% -facts-and-circumstances test - 2009. If the organization did not check a box on line 13, 16a, or 16b, and line 14 is 10% or more, and if the organization meets the "facts-and-circumstances" test, check this box and stop here. Explain in Part IV how the organization meets the "facts-and-circumstances" test. The organization qualifies as a publicly supported organization			<input type="checkbox"/>
b 10% -facts-and-circumstances test - 2008. If the organization did not check a box on line 13, 16a, 16b, or 17a, and line 15 is 10% or more, and if the organization meets the "facts-and-circumstances" test, check this box and stop here. Explain in Part IV how the organization meets the "facts-and-circumstances" test. The organization qualifies as a publicly supported organization			<input type="checkbox"/>
18 Private foundation. If the organization did not check a box on line 13, 16a, 16b, 17a, or 17b, check this box and see instructions			<input type="checkbox"/>

Part III Support Schedule for Organizations Described in Section 509(a)(2) (Complete only if you checked the box on line 9 of Part I.)**Section A. Public Support**

Calendar year (or fiscal year beginning in) ▶	(a) 2005	(b) 2006	(c) 2007	(d) 2008	(e) 2009	(f) Total
1 Gifts, grants, contributions, and membership fees received. (Do not include any "unusual grants.")						
2 Gross receipts from admissions, merchandise sold or services performed, or facilities furnished in any activity that is related to the organization's tax-exempt purpose						
3 Gross receipts from activities that are not an unrelated trade or business under section 513						
4 Tax revenues levied for the organization's benefit and either paid to or expended on its behalf						
5 The value of services or facilities furnished by a governmental unit to the organization without charge						
6 Total. Add lines 1 through 5						
7a Amounts included on lines 1, 2, and 3 received from disqualified persons						
b Amounts included on lines 2 and 3 received from other than disqualified persons that exceed the greater of \$5,000 or 1% of the amount on line 13 for the year						
c Add lines 7a and 7b						
8 Public support (Subtract line 7c from line 6)						

Section B. Total Support

Calendar year (or fiscal year beginning in) ▶	(a) 2005	(b) 2006	(c) 2007	(d) 2008	(e) 2009	(f) Total
9 Amounts from line 6						
10a Gross income from interest, dividends, payments received on securities loans, rents, royalties and income from similar sources						
b Unrelated business taxable income (less section 511 taxes) from businesses acquired after June 30, 1975						
c Add lines 10a and 10b						
11 Net income from unrelated business activities not included in line 10b, whether or not the business is regularly carried on						
12 Other income. Do not include gain or loss from the sale of capital assets (Explain in Part IV.)						
13 Total support (Add lines 9, 10c, 11, and 12)						
14 First five years. If the Form 990 is for the organization's first, second, third, fourth, or fifth tax year as a section 501(c)(3) organization, check this box and stop here ▶ <input type="checkbox"/>						

Section C. Computation of Public Support Percentage

15 Public support percentage for 2009 (line 8, column (f) divided by line 13, column (f))	15		%
16 Public support percentage from 2008 Schedule A, Part III, line 15	16		%

Section D. Computation of Investment Income Percentage

17 Investment income percentage for 2009 (line 10c, column (f) divided by line 13, column (f))	17		%
18 Investment income percentage from 2008 Schedule A, Part III, line 17	18		%

19a 33 1/3% support tests - 2009. If the organization did not check the box on line 14, and line 15 is more than 33 1/3%, and line 17 is not more than 33 1/3%, check this box and **stop here**. The organization qualifies as a publicly supported organization ▶ ☐

b 33 1/3% support tests - 2008. If the organization did not check a box on line 14 or line 19a, and line 16 is more than 33 1/3%, and line 18 is not more than 33 1/3%, check this box and **stop here**. The organization qualifies as a publicly supported organization ▶ ☐

20 Private foundation. If the organization did not check a box on line 14, 19a, or 19b, check this box and see instructions ▶ ☐

Schedule D
(Form 990)

Department of the Treasury
Internal Revenue Service

Supplemental Financial Statements

- ▶ Complete if the organization answered "Yes," to Form 990,
Part IV, line 6; 7, 8; 9, 10, 11, or 12.
▶ Attach to Form 990. ▶ See separate instructions.

OMB No 1545-0047

2009

Open to Public
Inspection

Name of the organization

DOWNTOWN SPECIAL SERVICES, INC.

Employer identification number

16-1464168

Part I Organizations Maintaining Donor Advised Funds or Other Similar Funds or Accounts. Complete if the organization answered "Yes" to Form 990, Part IV, line 6

	(a) Donor advised funds	(b) Funds and other accounts
1 Total number at end of year		
2 Aggregate contributions to (during year)		
3 Aggregate grants from (during year)		
4 Aggregate value at end of year		
5 Did the organization inform all donors and donor advisors in writing that the assets held in donor advised funds are the organization's property, subject to the organization's exclusive legal control?		<input type="checkbox"/> Yes <input type="checkbox"/> No
6 Did the organization inform all grantees, donors, and donor advisors in writing that grant funds can be used only for charitable purposes and not for the benefit of the donor or donor advisor, or for any other purpose conferring impermissible private benefit?		<input type="checkbox"/> Yes <input type="checkbox"/> No

Part II Conservation Easements. Complete if the organization answered "Yes" to Form 990, Part IV, line 7.

1 Purpose(s) of conservation easements held by the organization (check all that apply).

<input type="checkbox"/> Preservation of land for public use (e.g., recreation or pleasure)	<input type="checkbox"/> Preservation of an historically important land area
<input type="checkbox"/> Protection of natural habitat	<input type="checkbox"/> Preservation of a certified historic structure
<input type="checkbox"/> Preservation of open space	

2 Complete lines 2a through 2d if the organization held a qualified conservation contribution in the form of a conservation easement on the last day of the tax year.

	Held at the End of the Tax Year
a Total number of conservation easements	2a
b Total acreage restricted by conservation easements	2b
c Number of conservation easements on a certified historic structure included in (a)	2c
d Number of conservation easements included in (c) acquired after 8/17/06	2d

3 Number of conservation easements modified, transferred, released, extinguished, or terminated by the organization during the tax year ▶

4 Number of states where property subject to conservation easement is located ▶

5 Does the organization have a written policy regarding the periodic monitoring, inspection, handling of violations, and enforcement of the conservation easements it holds? ☐ Yes ☐ No

6 Staff and volunteer hours devoted to monitoring, inspecting, and enforcing conservation easements during the year ▶

7 Amount of expenses incurred in monitoring, inspecting, and enforcing conservation easements during the year ▶ \$

8 Does each conservation easement reported on line 2(d) above satisfy the requirements of section 170(h)(4)(B)(i) and section 170(h)(4)(B)(ii)? ☐ Yes ☐ No

9 In Part XIV, describe how the organization reports conservation easements in its revenue and expense statement, and balance sheet, and include, if applicable, the text of the footnote to the organization's financial statements that describes the organization's accounting for conservation easements.

Part III Organizations Maintaining Collections of Art, Historical Treasures, or Other Similar Assets.

Complete if the organization answered "Yes" to Form 990, Part IV, line 8

1a If the organization elected, as permitted under SFAS 116, not to report in its revenue statement and balance sheet works of art, historical treasures, or other similar assets held for public exhibition, education, or research in furtherance of public service, provide, in Part XIV, the text of the footnote to its financial statements that describes these items.

b If the organization elected, as permitted under SFAS 116, to report in its revenue statement and balance sheet works of art, historical treasures, or other similar assets held for public exhibition, education, or research in furtherance of public service, provide the following amounts relating to these items:

(i) Revenues included in Form 990, Part VIII, line 1	▶ \$
(ii) Assets included in Form 990, Part X	▶ \$

2 If the organization received or held works of art, historical treasures, or other similar assets for financial gain, provide the following amounts required to be reported under SFAS 116 relating to these items.

a Revenues included in Form 990, Part VIII, line 1	▶ \$
b Assets included in Form 990, Part X	▶ \$

Part III Organizations Maintaining Collections of Art, Historical Treasures, or Other Similar Assets (continued)

3 Using the organization's acquisition, accession, and other records, check any of the following that are a significant use of its collection items (check all that apply).

- a ☐ Public exhibition
 b ☐ Scholarly research
 c ☐ Preservation for future generations
 d ☐ Loan or exchange programs
 e ☐ Other _____

4 Provide a description of the organization's collections and explain how they further the organization's exempt purpose in Part XIV.

5 During the year, did the organization solicit or receive donations of art, historical treasures, or other similar assets to be sold to raise funds rather than to be maintained as part of the organization's collection? ☐ Yes ☐ No

Part IV Escrow and Custodial Arrangements. Complete if organization answered "Yes" to Form 990, Part IV, line 9, or reported an amount on Form 990, Part X, line 21.

1a Is the organization an agent, trustee, custodian or other intermediary for contributions or other assets not included on Form 990, Part X? ☐ Yes ☐ No

b If "Yes," explain the arrangement in Part XIV and complete the following table

	Amount
1c	
1d	
1e	
1f	

- c Beginning balance
 d Additions during the year
 e Distributions during the year
 f Ending balance

2a Did the organization include an amount on Form 990, Part X, line 21? ☐ Yes ☐ No

b If "Yes," explain the arrangement in Part XIV.

Part V Endowment Funds. Complete if the organization answered "Yes" to Form 990, Part IV, line 10

	(a) Current year	(b) Prior year	(c) Two years back	(d) Three years back	(e) Four years back
1a Beginning of year balance					
b Contributions					
c Net investment earnings, gains, and losses					
d Grants or scholarships					
e Other expenditures for facilities and programs					
f Administrative expenses					
g End of year balance					

2 Provide the estimated percentage of the year end balance held as:

- a Board designated or quasi-endowment ► _____ %
 b Permanent endowment ► _____ %
 c Term endowment ► _____ %

3a Are there endowment funds not in the possession of the organization that are held and administered for the organization by:

	Yes	No
(i) unrelated organizations		
(ii) related organizations		
b If "Yes" to 3a(ii), are the related organizations listed as required on Schedule R?		

- (i) unrelated organizations
 (ii) related organizations

b If "Yes" to 3a(ii), are the related organizations listed as required on Schedule R?

4 Describe in Part XIV the intended uses of the organization's endowment funds.

Part VI Investments - Land, Buildings, and Equipment. See Form 990, Part X, line 10

Description of investment	(a) Cost or other basis (investment)	(b) Cost or other basis (other)	(c) Accumulated depreciation	(d) Book value
1a Land				
b Buildings				
c Leasehold improvements	77,058.		77,058.	0.
d Equipment	33,758.		26,688.	7,070.
e Other	14,819.		9,632.	5,187.
Total. Add lines 1a through 1e (Column (d) must equal Form 990, Part X, column (B), line 10(c).)				12,257.

Part VII Investments - Other Securities. See Form 990, Part X, line 12.

(a) Description of security or category (including name of security)	(b) Book value	(c) Method of valuation: Cost or end-of-year market value
Financial derivatives		
Closely-held equity interests		
Other		
Total. (Col (b) must equal Form 990, Part X, col (B) line 12.) ▶		

Part VIII Investments - Program Related. See Form 990, Part X, line 13.

(a) Description of investment type	(b) Book value	(c) Method of valuation: Cost or end-of-year market value
Total. (Col (b) must equal Form 990, Part X, col (B) line 13.) ▶		

Part IX Other Assets. See Form 990, Part X, line 15.

(a) Description	(b) Book value
DUE FROM RDDC	1,424.
Total. (Column (b) must equal Form 990, Part X, col (B) line 15.) ▶	1,424.

Part X Other Liabilities. See Form 990, Part X, line 25.

1 (a) Description of liability	(b) Amount
Federal income taxes	
ACCRUED PAYROLL & RELATED TAXES	4,540.
Total. (Column (b) must equal Form 990, Part X, col (B) line 25.) ▶	4,540.

2. FIN 48 Footnote In Part XIV, provide the text of the footnote to the organization's financial statements that reports the organization's liability for uncertain tax positions under FIN 48.

Part XI Reconciliation of Change in Net Assets from Form 990 to Audited Financial Statements

1	Total revenue (Form 990, Part VIII, column (A), line 12)	1	510,892.
2	Total expenses (Form 990, Part IX, column (A), line 25)	2	520,857.
3	Excess or (deficit) for the year Subtract line 2 from line 1	3	<9,965.>
4	Net unrealized gains (losses) on investments	4	
5	Donated services and use of facilities	5	
6	Investment expenses	6	
7	Prior period adjustments	7	
8	Other (Describe in Part XIV.)	8	
9	Total adjustments (net). Add lines 4 through 8	9	0.
10	Excess or (deficit) for the year per audited financial statements. Combine lines 3 and 9	10	<9,965.>

Part XII Reconciliation of Revenue per Audited Financial Statements With Revenue per Return

1	Total revenue, gains, and other support per audited financial statements	1	510,892.
2	Amounts included on line 1 but not on Form 990, Part VIII, line 12:		
a	Net unrealized gains on investments	2a	
b	Donated services and use of facilities	2b	
c	Recoveries of prior year grants	2c	
d	Other (Describe in Part XIV)	2d	
e	Add lines 2a through 2d	2e	0.
3	Subtract line 2e from line 1	3	510,892.
4	Amounts included on Form 990, Part VIII, line 12, but not on line 1:		
a	Investment expenses not included on Form 990, Part VIII, line 7b	4a	
b	Other (Describe in Part XIV)	4b	
c	Add lines 4a and 4b	4c	0.
5	Total revenue Add lines 3 and 4c. (This must equal Form 990, Part I, line 12)	5	510,892.

Part XIII Reconciliation of Expenses per Audited Financial Statements With Expenses per Return

1	Total expenses and losses per audited financial statements	1	520,857.
2	Amounts included on line 1 but not on Form 990, Part IX, line 25:		
a	Donated services and use of facilities	2a	
b	Prior year adjustments	2b	
c	Other losses	2c	
d	Other (Describe in Part XIV)	2d	
e	Add lines 2a through 2d	2e	0.
3	Subtract line 2e from line 1	3	520,857.
4	Amounts included on Form 990, Part IX, line 25, but not on line 1:		
a	Investment expenses not included on Form 990, Part VIII, line 7b	4a	
b	Other (Describe in Part XIV.)	4b	
c	Add lines 4a and 4b	4c	0.
5	Total expenses Add lines 3 and 4c. (This must equal Form 990, Part I, line 18)	5	520,857.

Part XIV Supplemental Information

Complete this part to provide the descriptions required for Part II, lines 3, 5, and 9; Part III, lines 1a and 4; Part IV, lines 1b and 2b; Part V, line 4; Part X, line 2; Part XI, line 8; Part XII, lines 2d and 4b, and Part XIII, lines 2d and 4b. Also complete this part to provide any additional information.

SCHEDULE O
(Form 990)

Department of the Treasury
Internal Revenue Service

Name of the organization

Supplemental Information to Form 990

Complete to provide information for responses to specific questions on
Form 990 or to provide any additional information.
▶ Attach to Form 990.

OMB No 1545-0047

2009

Open to Public
Inspection

DOWNTOWN SPECIAL SERVICES, INC.

Employer identification number
16-1464168

FORM 990, PART VI, SECTION A, LINE 3: MANAGEMENT DUTIES HAVE BEEN
DELEGATED TO ROCHESTER DOWNTOWN DEVELOPMENT, CORPORATION, A RELATED TAX
EXEMPT ORGANIZATION AS IDENTIFIED ON SCHEDULE R. RDDC MANAGES ALL FINANCIAL
AND ADMINISTRATIVE FUNCTIONS OF DOWNTOWN SPECIAL SERVICES, INC. UNDER THE
SUPERVISION OF THE GOVERNING BODY OF THE ORGANIZATION.

FORM 990, PART VI, SECTION B, LINE 11: THE TAX RETURN IS REVIEWED BY THE
PRESIDENT OF THE ORGANIZATION AND THE TREASURER OF THE BOARD OF DIRECTORS
AND ANY QUESTIONS RAISED ARE DIRECTED TOWARD THE PAID PREPARER FOR
CLARIFICATION.

FORM 990, PART VI, SECTION C, LINE 18: THE ORGANIZATION'S FORM 990 IS
AVAILABLE ON THE GUIDESTAR.ORG WEBSITE.

FORM 990, PART VI, SECTION C, LINE 19: THE ORGANIZATION'S GOVERNING
DOCUMENTS, CONFLICT OF INTEREST POLICY, AND FINANCIAL STATEMENTS ARE NOT
AVAILABLE TO THE PUBLIC.

FORM 990, PART XI, LINE 2C: THE EXECUTIVE DIRECTOR IS APPOINTED TO
OVERSEE THE AUDIT, AND THE GOVERNING BOARD ASSUMES RESPONSIBILITY OF
THE AUDIT AND SELECTS THE INDEPENDENT ACCOUNTANT.

Part V Transactions With Related Organizations (Complete if the organization answered "Yes" to Form 990, Part IV, line 34, 35, or 36.)**Note.** Complete line 1 if any entity is listed in Parts II, III, or IV of this schedule.**1** During the tax year, did the organization engage in any of the following transactions with one or more related organizations listed in Parts II-IV?**a** Receipt of (i) interest (ii) annuities (iii) royalties or (iv) rent from a controlled entity**b** Gift, grant, or capital contribution to other organization(s)**c** Gift, grant, or capital contribution from other organization(s)**d** Loans or loan guarantees to or for other organization(s)**e** Loans or loan guarantees by other organization(s)**f** Sale of assets to other organization(s)**g** Purchase of assets from other organization(s)**h** Exchange of assets**i** Lease of facilities, equipment, or other assets to other organization(s)**j** Lease of facilities, equipment, or other assets from other organization(s)**k** Performance of services or membership or fundraising solicitations for other organization(s)**l** Performance of services or membership or fundraising solicitations by other organization(s)**m** Sharing of facilities, equipment, mailing lists, or other assets**n** Sharing of paid employees**o** Reimbursement paid to other organization for expenses**p** Reimbursement paid by other organization for expenses**q** Other transfer of cash or property to other organization(s)**r** Other transfer of cash or property from other organization(s)**2** If the answer to any of the above is "Yes," see the instructions for information on who must complete this line, including covered relationships and transaction thresholds.

	(a) Name of other organization(s)	(b) Transaction type (a-r)	(c) Amount involved	
			Yes	No
(1)	ROCHESTER DOWNTOWN DEVELOPMENT CORPORATION	M		X
(2)	ROCHESTER DOWNTOWN DEVELOPMENT CORPORATION	O		X
(3)	ROCHESTER DOWNTOWN DEVELOPMENT CORPORATION	R		X
(4)				
(5)				
(6)				

Form **4562**Department of the Treasury
Internal Revenue Service (99)

Name(s) shown on return

Depreciation and Amortization 990
(Including Information on Listed Property)

▶ See separate instructions.

▶ Attach to your tax return.

OMB No 1545-0172

2009Attachment
Sequence No **67****DOWNTOWN SPECIAL SERVICES, INC.****FORM 990 PAGE 10****16-1464168****Part I Election To Expense Certain Property Under Section 179** Note: If you have any listed property, complete Part V before you complete Part I.

1	Maximum amount. See the instructions for a higher limit for certain businesses	1	250,000.
2	Total cost of section 179 property placed in service (see instructions)	2	
3	Threshold cost of section 179 property before reduction in limitation	3	800,000.
4	Reduction in limitation. Subtract line 3 from line 2. If zero or less, enter -0-	4	
5	Dollar limitation for tax year. Subtract line 4 from line 1. If zero or less, enter -0-. If married filing separately, see instructions	5	
6	(a) Description of property	(b) Cost (business use only)	(c) Elected cost
7	Listed property. Enter the amount from line 29	7	
8	Total elected cost of section 179 property. Add amounts in column (c), lines 6 and 7	8	
9	Tentative deduction. Enter the smaller of line 5 or line 8	9	
10	Carryover of disallowed deduction from line 13 of your 2008 Form 4562	10	
11	Business income limitation. Enter the smaller of business income (not less than zero) or line 5	11	
12	Section 179 expense deduction. Add lines 9 and 10, but do not enter more than line 11	12	
13	Carryover of disallowed deduction to 2010. Add lines 9 and 10, less line 12	13	

Note: Do not use Part II or Part III below for listed property. Instead, use Part V.

Part II Special Depreciation Allowance and Other Depreciation (Do not include listed property.)

14	Special depreciation allowance for qualified property (other than listed property) placed in service during the tax year	14	
15	Property subject to section 168(f)(1) election	15	
16	Other depreciation (including ACRS)	16	10,995.

Part III MACRS Depreciation (Do not include listed property) (See instructions.)**Section A**

17	MACRS deductions for assets placed in service in tax years beginning before 2009	17	
18	If you are electing to group any assets placed in service during the tax year into one or more general asset accounts, check here		

Section B - Assets Placed in Service During 2009 Tax Year Using the General Depreciation System

(a) Classification of property	(b) Month and year placed in service	(c) Basis for depreciation (business/investment use only - see instructions)	(d) Recovery period	(e) Convention	(f) Method	(g) Depreciation deduction
19a 3-year property						
b 5-year property		557.	5 YRS	MQ	200DB	28.
c 7-year property						
d 10-year property						
e 15-year property						
f 20-year property						
g 25-year property			25 yrs.		S/L	
h Residential rental property	/		27.5 yrs.	MM	S/L	
	/		27 5 yrs.	MM	S/L	
i Nonresidential real property	/		39 yrs.	MM	S/L	
	/			MM	S/L	

Section C - Assets Placed in Service During 2009 Tax Year Using the Alternative Depreciation System

20a Class life					S/L	
b 12-year			12 yrs		S/L	
c 40-year	/		40 yrs.	MM	S/L	

Part IV Summary (See instructions.)

21	Listed property. Enter amount from line 28	21	
22	Total. Add amounts from line 12, lines 14 through 17, lines 19 and 20 in column (g), and line 21. Enter here and on the appropriate lines of your return. Partnerships and S corporations - see instr	22	11,023.
23	For assets shown above and placed in service during the current year, enter the portion of the basis attributable to section 263A costs	23	

Part V Listed Property (Include automobiles, certain other vehicles, cellular telephones, certain computers, and property used for entertainment, recreation, or amusement.)

Note: For any vehicle for which you are using the standard mileage rate or deducting lease expense, complete only 24a, 24b, columns (a) through (c) of Section A, all of Section B, and Section C if applicable.

Section A - Depreciation and Other Information (Caution: See the instructions for limits for passenger automobiles)

24a Do you have evidence to support the business/investment use claimed? ☐ Yes ☐ No **24b** If "Yes," is the evidence written? ☐ Yes ☐ No

(a) Type of property (list vehicles first)	(b) Date placed in service	(c) Business/ investment use percentage	(d) Cost or other basis	(e) Basis for depreciation (business/investment use only)	(f) Recovery period	(g) Method/ Convention	(h) Depreciation deduction	(i) Elected section 179 cost
25 Special depreciation allowance for qualified listed property placed in service during the tax year and used more than 50% in a qualified business use							25	
26 Property used more than 50% in a qualified business use:								
		%						
		%						
		%						
27 Property used 50% or less in a qualified business use:								
		%				S/L -		
		%				S/L -		
		%				S/L -		
28 Add amounts in column (h), lines 25 through 27. Enter here and on line 21, page 1							28	
29 Add amounts in column (i), line 26. Enter here and on line 7, page 1								29

Section B - Information on Use of Vehicles

Complete this section for vehicles used by a sole proprietor, partner, or other "more than 5% owner," or related person.

If you provided vehicles to your employees, first answer the questions in Section C to see if you meet an exception to completing this section for those vehicles

	(a) Vehicle	(b) Vehicle	(c) Vehicle	(d) Vehicle	(e) Vehicle	(f) Vehicle
30 Total business/investment miles driven during the year (do not include commuting miles)						
31 Total commuting miles driven during the year						
32 Total other personal (noncommuting) miles driven						
33 Total miles driven during the year. Add lines 30 through 32						
34 Was the vehicle available for personal use during off-duty hours?	Yes No	Yes No	Yes No	Yes No	Yes No	Yes No
35 Was the vehicle used primarily by a more than 5% owner or related person?						
36 Is another vehicle available for personal use?						

Section C - Questions for Employers Who Provide Vehicles for Use by Their Employees

Answer these questions to determine if you meet an exception to completing Section B for vehicles used by employees who are not more than 5% owners or related persons.

37 Do you maintain a written policy statement that prohibits all personal use of vehicles, including commuting, by your employees?	Yes	No
38 Do you maintain a written policy statement that prohibits personal use of vehicles, except commuting, by your employees? See the instructions for vehicles used by corporate officers, directors, or 1% or more owners		
39 Do you treat all use of vehicles by employees as personal use?		
40 Do you provide more than five vehicles to your employees, obtain information from your employees about the use of the vehicles, and retain the information received?		
41 Do you meet the requirements concerning qualified automobile demonstration use?		

Note: If your answer to 37, 38, 39, 40, or 41 is "Yes," do not complete Section B for the covered vehicles.

Part VI Amortization

(a) Description of costs	(b) Date amortization begins	(c) Amortizable amount	(d) Code section	(e) Amortization period or percentage	(f) Amortization for this year
42 Amortization of costs that begins during your 2009 tax year:					
43 Amortization of costs that began before your 2009 tax year					43
44 Total. Add amounts in column (f). See the instructions for where to report					44



www.rochesterdowntown.com

PROGRAM REPORT, July 2010

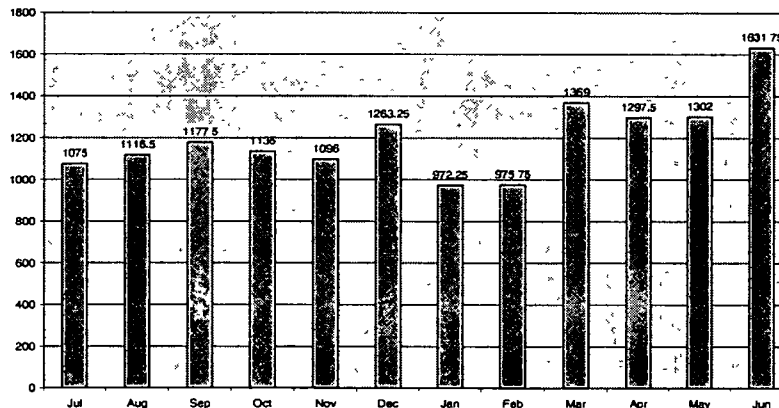
GENERAL NEWS

- City Council unanimously approved DSSI's fiscal year 2010-11 budget (\$522,917) on 4/13/10.
- Welcome to **Lt. Ray Dearcop** of the RPD Southwest Neighborhood Service Center who has joined the DSSI Membership.

PROGRAM STATISTICS - Fiscal Year 2009-10 (July 1, 2009 – June 30, 2010)

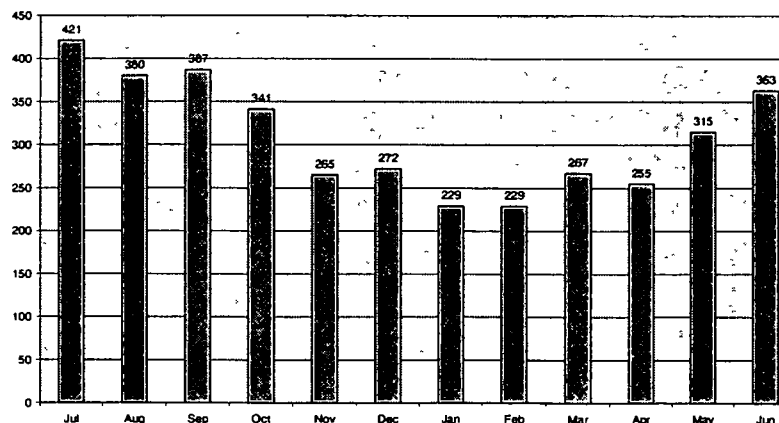
- Both the safety services and information services teams made a total of **22,925 contacts** (interactions); 811 more than last fiscal year.
- The **"Red Shirts"** made **17,852 contacts**, provided **14,411.5 on-street service hours** (2,466.5 more than last fiscal year); and answered **279 calls** for the **"Walk You to Your Car"** service.

2009-2010 Safety Services Team Hours



- The **Information Team** made **5,073 contacts** and had **3,724 Information Center walk-ins**. Visitors came from around the world – Brazil, Australia, Canada, Cuba, Netherlands, Scotland, Ireland, Germany, England – as well as the United States.

2009-2010 Information Center Walk-ins



SAFETY SERVICES (The “Red Shirts”)

- **Youth issues** this past year kept the Red Shirts busy staffing walking posts around the Liberty Pole; Main and Clinton; and Stone and Broad Streets.
- **The Red Shirts assist RPD with downtown crime:** (two recent examples)
 - May 25 – Red Shirts **Frank Frey** and **Dave Demers** alerted the RPD after observing robbery victims following suspects along Main Street. The victims reported to the Red Shirts that the suspects may have a gun. The suspect was taken into custody after a .25 caliber pistol was recovered.
 - June 4 – a couple with an infant were robbed of \$25 using a screwdriver as a weapon. Team members **Jim McNamara** and **Dave Zaidel** were made aware of the incident by the victim. They immediately contacted the RPD by radio and broadcast the description of the suspects and their location. Dave Zaidel watched one of the suspects run into *Big Deal Hip Hop Clothing* on Main Street. They located that suspect hiding in the changing room and were able to detain him until police arrived. **Joe Tedone** and **Ken Coniglio** immediately moved into the area along with two other teams. Joe and Ken observed a person matching one of the descriptions near the Liberty Pole and notified a bike patrolman to detain that individual. The suspects were identified by the victims and were arrested for robbery. As the Red Shirts were clearing from the scene, they found the screwdriver used in the robbery in a doorway on N. Clinton Avenue and made the RPD aware of it. **Good teamwork!**

INFORMATION SERVICES

- The Information Team updated **shopping binders** in 12 locations around downtown and **restaurant binders** in 10 locations.
- Information Specialists updated all segments of the “**Experiencing**” section of the downtown website www.rochesterdowntown.com (services and amenities, restaurants, shopping)
- Staff updated maps and listings of restaurants and parking. Updates were sent via e-mail to the distribution list which includes building managers, downtown residents, hotels, etc.
- E-mails are continuing to be sent to **convention organizers** offering our maps and services to incoming groups.
- Staff updated the **Public Art** list and **Downtown Buildings** lists, the updated versions are posted on the website.
- **Free events** lists were sent to distributions lists throughout the year.
- **Convention alerts** were sent to downtown businesses informing them of upcoming large conventions/groups that could impact their business.
- The annual **survey of visitors** to the Information Center was conducted year round for the first time, attached are the results.

STAFFING ADDITIONS

- Welcome new Red Shirts **Bob Brady**, **Ken Coniglio** and **Bob Kerr**. Combined they have 87 years of law enforcement service. We welcome them to the team!



www.rochesterdowntown.com

PROGRAM REPORT, July 2010

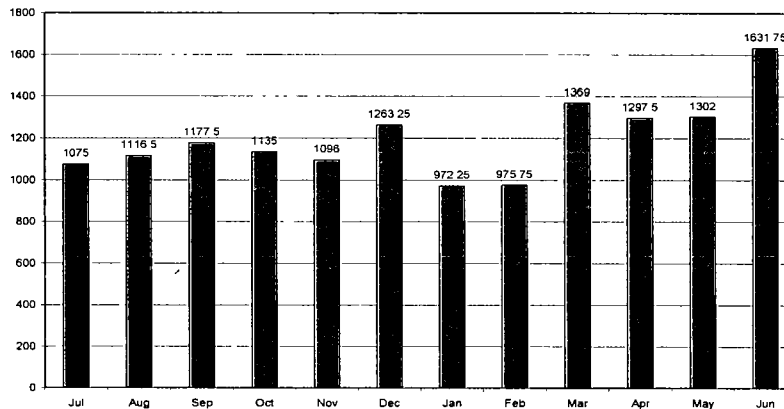
GENERAL NEWS

- City Council unanimously approved DSSI's fiscal year 2010-11 budget (\$522,917) on 4/13/10.
- Welcome to **Lt. Ray Dearcop** of the RPD Southwest Neighborhood Service Center who has joined the DSSI Membership.

PROGRAM STATISTICS - Fiscal Year 2009-10 (July 1, 2009 – June 30, 2010)

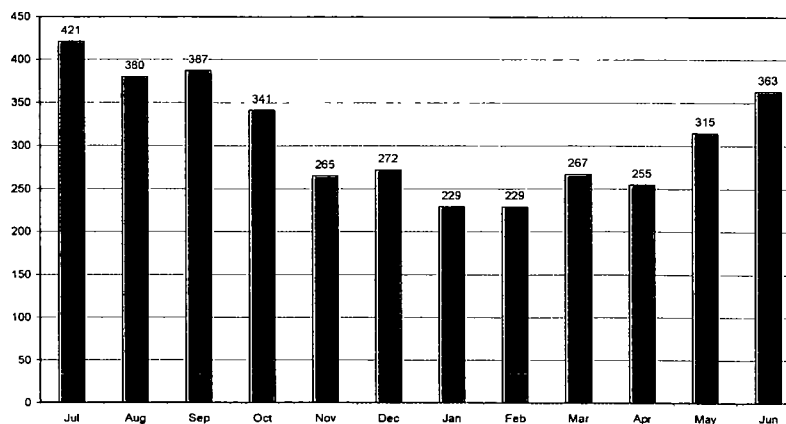
- Both the safety services and information services teams made a total of **22,925 contacts** (interactions); 811 more than last fiscal year.
- The **"Red Shirts"** made **17,852 contacts**, provided **14,411.5 on-street service hours** (2,466.5 more than last fiscal year); and answered **279 calls** for the **"Walk You to Your Car"** service.

2009-2010 Safety Services Team Hours



- The **Information Team** made **5,073 contacts** and had **3,724 Information Center walk-ins**. Visitors came from around the world – Brazil, Australia, Canada, Cuba, Netherlands, Scotland, Ireland, Germany, England – as well as the United States.

2009-2010 Information Center Walk-ins



SAFETY SERVICES (The "Red Shirts")

- **Youth issues** this past year kept the Red Shirts busy staffing walking posts around the Liberty Pole; Main and Clinton; and Stone and Broad Streets.
- **The Red Shirts assist RPD with downtown crime:** (two recent examples)
 - May 25 – Red Shirts **Frank Frey** and **Dave Demers** alerted the RPD after observing robbery victims following suspects along Main Street. The victims reported to the Red Shirts that the suspects may have a gun. The suspect was taken into custody after a .25 caliber pistol was recovered.
 - June 4 – a couple with an infant were robbed of \$25 using a screwdriver as a weapon. Team members **Jim McNamara** and **Dave Zaidel** were made aware of the incident by the victim. They immediately contacted the RPD by radio and broadcast the description of the suspects and their location. Dave Zaidel watched one of the suspects run into *Big Deal Hip Hop Clothing* on Main Street. They located that suspect hiding in the changing room and were able to detain him until police arrived. **Joe Tedone** and **Ken Coniglio** immediately moved into the area along with two other teams. Joe and Ken observed a person matching one of the descriptions near the Liberty Pole and notified a bike patrolman to detain that individual. The suspects were identified by the victims and were arrested for robbery. As the Red Shirts were clearing from the scene, they found the screwdriver used in the robbery in a doorway on N. Clinton Avenue and made the RPD aware of it. **Good teamwork!**

INFORMATION SERVICES

- The Information Team updated **shopping binders** in 12 locations around downtown and **restaurant binders** in 10 locations.
- Information Specialists updated all segments of the "**Experiencing**" section of the downtown website www.rochesterdowntown.com (services and amenities, restaurants, shopping)
- Staff updated maps and listings of restaurants and parking. Updates were sent via e-mail to the distribution list which includes building managers, downtown residents, hotels, etc.
- E-mails are continuing to be sent to **convention organizers** offering our maps and services to incoming groups.
- Staff updated the **Public Art** list and **Downtown Buildings** lists, the updated versions are posted on the website.
- **Free events** lists were sent to distributions lists throughout the year.
- **Convention alerts** were sent to downtown businesses informing them of upcoming large conventions/groups that could impact their business.
- The annual **survey of visitors** to the Information Center was conducted year round for the first time, attached are the results.

STAFFING ADDITIONS

- Welcome new Red Shirts **Bob Brady**, **Ken Coniglio** and **Bob Kerr**. Combined they have 87 years of law enforcement service. We welcome them to the team!

