



See a Social Security Number? Say Something!
Report Privacy Problems to <https://public.resource.org/privacy>
Or call the IRS Identity Theft Hotline at 1-800-908-4490



Form **990-EZ**

**Short Form
Return of Organization Exempt From Income Tax**

OMB No 1545-1150

2009

**Open to Public
Inspection**

Department of the Treasury
Internal Revenue Service

Under section 501(c), 527, or 4947(a)(1) of the Internal Revenue Code
(except black lung benefit trust or private foundation)
Sponsoring organizations of donor advised funds and controlling organizations as defined in section 512(b)(13) must file Form 990. All other organizations with gross receipts less than \$500,000 and total assets less than \$1,250,000 at the end of the year may use this form.
The organization may have to use a copy of this return to satisfy state reporting requirements.

A For the 2009 calendar year, or tax year beginning 1 January, 2009, and ending 31 December, 2009

- B** Check if applicable:
- Address change
 - Name change
 - Initial return
 - Terminated
 - Amended return
 - Application pending

Please use IRS label or print or type. See Specific Instructions.

C Name of organization
CLOUD RIDGE NATURALISTS
Number and street (or P.O. box, if mail is not delivered to street address) Room/suite
8297 Overland Rd.
City or town, state or country, and ZIP + 4
Ward, CO 80481-9532

D Employer identification number
84-0919233
E Telephone number
(303) 459-3248
F Group Exemption Number
N/A

Section 501(c)(3) organizations and 4947(a)(1) nonexempt charitable trusts must attach a completed Schedule A (Form 990 or 990-EZ).

G Accounting Method: Cash Accrual
Other (specify) ▶

I Website: ▶ www.CloudRidge.org

H Check if the organization is not required to attach Schedule B (Form 990, 990-EZ, or 990-PF).

J Tax-exempt status (check only one) — 501(c) (3) (insert no.) 4947(a)(1) or 527

K Check if the organization is not a section 509(a)(3) supporting organization and its gross receipts are normally not more than \$25,000. A Form 990-EZ or Form 990 return is not required, but if the organization chooses to file a return, be sure to file a complete return.

L Add lines 5b, 6b, and 7b, to line 9 to determine gross receipts; if \$500,000 or more, file Form 990 instead of Form 990-EZ ▶ \$ 368,870.

Part I Revenue, Expenses, and Changes in Net Assets or Fund Balances (See the instructions for Part I.)

		Revenue		Expenses		Net Assets	
1	Contributions, gifts, grants, and similar amounts received	1	\$ 6,550.	10	Grants and similar amounts paid (attach schedule)	10	0
2	Program service revenue including government fees and contracts	2	\$ 362,320.	11	Benefits paid to or for members	11	0
3	Membership dues and assessments	3	0	12	Salaries, other compensation, and employee benefits	12	0
4	Investment income	4	0	13	Professional fees and other payments to independent contractors	13	\$ 323,443.
5a	Gross amount from sale of assets other than inventory	5a	0	14	Occupancy, rent, utilities, and maintenance	14	\$ 1,963.
b	Less: cost or other basis and sales expenses	5b	0	15	Printing, publications, postage, and shipping	15	\$ 1,905.
c	Gain or (loss) from sale of assets other than inventory (Subtract line 5b from line 5a)	5c	0	16	Other expenses (describe ▶ <u>Seneca liability Insurance</u>)	16	\$ 4,460.
6	Special events and activities (complete applicable parts of Schedule G). If any amount is from gaming, check here <input type="checkbox"/>			17	Total expenses. Add lines 10 through 16	17	\$ 331,771.
a	Gross revenue (not including \$ <u>6,550.</u> of contributions reported on line 1)	6a	0	18	Excess or (deficit) for the year (Subtract line 17 from line 9)	18	\$ 37,099.
b	Less: direct expenses other than fundraising expenses	6b	0	19	Net assets or fund balances at beginning of year (from line 27, column (A)) (must agree with end-of-year figure reported on prior year's return)	19	\$ 9,895.
c	Net income or (loss) from special events and activities (Subtract line 6b from line 6a)	6c	0	20	Other changes in net assets or fund balances (attach explanation)	20	0
7a	Gross sales of inventory, less returns and allowances	7a	0	21	Net assets or fund balances at end of year. Combine lines 18 through 20	21	\$ 46,994
b	Less: cost of goods sold	7b	0				
c	Gross profit or (loss) from sales of inventory (Subtract line 7b from line 7a)	7c	0				
8	Other revenue (describe ▶)	8	0				
9	Total revenue. Add lines 1, 2, 3, 4, 5c, 6c, 7c, and 8	9	\$ 368,870.				

Part II Balance Sheets. If Total assets on line 25, column (B) are \$1,250,000 or more, file Form 990 instead of Form 990-EZ.

		(See the instructions for Part II)		(A) Beginning of year	(B) End of year
22	Cash, savings, and investments	22	\$ 9,895.	22	\$ 46,994.
23	Land and buildings	23	0	23	0
24	Other assets (describe ▶)	24	0	24	0
25	Total assets	25	\$ 9,895.	25	\$ 46,994.
26	Total liabilities (describe ▶)	26	0	26	0
27	Net assets or fund balances (line 27 of column (B) must agree with line 21)	27	\$ 9,895.	27	\$ 46,994.

SCANNED JUN 25 2010

RECEIVED

MAY 13 2010

OGDEN UT

IRS-OSC

9

Part V Other Information (Note the statement requirements in the instructions for Part V.)

		Yes	No
33	Did the organization engage in any activity not previously reported to the IRS? If "Yes," attach a detailed description of each activity		<input checked="" type="checkbox"/>
34	Were any changes made to the organizing or governing documents? If "Yes," attach a conformed copy of the changes		<input checked="" type="checkbox"/>
35	If the organization had income from business activities, such as those reported on lines 2, 6a, and 7a (among others), but not reported on Form 990-T, attach a statement explaining why the organization did not report the income on Form 990-T.		
a	Did the organization have unrelated business gross income of \$1,000 or more or was it subject to section 6033(e) notice, reporting, and proxy tax requirements?		<input checked="" type="checkbox"/>
b	If "Yes," has it filed a tax return on Form 990-T for this year?	<i>N/A</i>	
36	Did the organization undergo a liquidation, dissolution, termination, or significant disposition of net assets during the year? If "Yes," complete applicable parts of Schedule N		<input checked="" type="checkbox"/>
37a	Enter amount of political expenditures, direct or indirect, as described in the instructions. ▶ 37a <u>0</u>		
b	Did the organization file Form 1120-POL for this year?		<input checked="" type="checkbox"/>
38a	Did the organization borrow from, or make any loans to, any officer, director, trustee, or key employee or were any such loans made in a prior year and still outstanding at the end of the period covered by this return?		<input checked="" type="checkbox"/>
b	If "Yes," complete Schedule L, Part II and enter the total amount involved	38b <u>N/A</u>	
39	Section 501(c)(7) organizations. Enter:		
a	Initiation fees and capital contributions included on line 9	39a <u>0</u>	
b	Gross receipts, included on line 9, for public use of club facilities	39b <u>0</u>	
40a	Section 501(c)(3) organizations. Enter amount of tax imposed on the organization during the year under: section 4911 ▶ <u>0</u> ; section 4912 ▶ <u>0</u> ; section 4955 ▶ <u>0</u>		
b	Section 501(c)(3) and 501(c)(4) organizations. Did the organization engage in any section 4958 excess benefit transaction during the year or is it aware that it engaged in an excess benefit transaction with a disqualified person in a prior year, and that the transaction has not been reported on any of the organization's prior Forms 990 or 990-EZ? If "Yes," complete Schedule L, Part I		<input checked="" type="checkbox"/>
c	Section 501(c)(3) and 501(c)(4) organizations. Enter amount of tax imposed on organization managers or disqualified persons during the year under sections 4912, 4955, and 4958 ▶ <u>0</u>		
d	Section 501(c)(3) and 501(c)(4) organizations. Enter amount of tax on line 40c reimbursed by the organization ▶ <u>0</u>		
e	All organizations. At any time during the tax year, was the organization a party to a prohibited tax shelter transaction? If "Yes," complete Form 8886-T.		<input checked="" type="checkbox"/>
41	List the states with which a copy of this return is filed. ▶ <u>Not required in Colorado</u>		
42a	The organization's books are in care of ▶ <u>Audrey D. Benedict</u> Telephone no. ▶ <u>(303) 459-3248</u> Located at ▶ <u>8297 Overland Rd, Ward, CO</u> ZIP + 4 ▶ <u>80481-9532</u>		
b	At any time during the calendar year, did the organization have an interest in or a signature or other authority over a financial account in a foreign country (such as a bank account, securities account, or other financial account)?		<input checked="" type="checkbox"/>
	If "Yes," enter the name of the foreign country: ▶ <u>N/A</u>	42b	
	See the instructions for exceptions and filing requirements for Form TD F 90-22.1, Report of Foreign Bank and Financial Accounts .		
c	At any time during the calendar year, did the organization maintain an office outside of the U.S.?		<input checked="" type="checkbox"/>
	If "Yes," enter the name of the foreign country: ▶ _____	42c	
43	Section 4947(a)(1) nonexempt charitable trusts filing Form 990-EZ in lieu of Form 1041 —Check here ▶ <input type="checkbox"/> and enter the amount of tax-exempt interest received or accrued during the tax year ▶ 43 <u>N/A</u>		
44	Did the organization maintain any donor advised funds? If "Yes," Form 990 must be completed instead of Form 990-EZ		<input checked="" type="checkbox"/>
45	Is any related organization a controlled entity of the organization within the meaning of section 512(b)(13)? If "Yes," Form 990 must be completed instead of Form 990-EZ		<input checked="" type="checkbox"/>

SCHEDULE A
(Form 990 or 990-EZ)

Public Charity Status and Public Support

OMB No 1545-0047

2009

Open to Public Inspection

Department of the Treasury
Internal Revenue Service

Complete if the organization is a section 501(c)(3) organization or a section 4947(a)(1) nonexempt charitable trust.

▶ Attach to Form 990 or Form 990-EZ. ▶ See separate instructions.

Name of the organization

Cloud Ridge Naturalists

Employer identification number

84 0919233

Part I Reason for Public Charity Status (All organizations must complete this part.) See instructions.

The organization is not a private foundation, because it is: (For lines 1 through 11, check only one box.)

- 1 A church, convention of churches, or association of churches described in **section 170(b)(1)(A)(i)**.
- 2 A school described in **section 170(b)(1)(A)(ii)**. (Attach Schedule E.)
- 3 A hospital or a cooperative hospital service organization described in **section 170(b)(1)(A)(iii)**.
- 4 A medical research organization operated in conjunction with a hospital described in **section 170(b)(1)(A)(iii)**. Enter the hospital's name, city, and state: _____
- 5 An organization operated for the benefit of a college or university owned or operated by a governmental unit described in **section 170(b)(1)(A)(iv)**. (Complete Part II.)
- 6 A federal, state, or local government or governmental unit described in **section 170(b)(1)(A)(v)**.
- 7 An organization that normally receives a substantial part of its support from a governmental unit or from the general public described in **section 170(b)(1)(A)(vi)**. (Complete Part II.)
- 8 A community trust described in **section 170(b)(1)(A)(vii)**. (Complete Part II.)
- 9 An organization that normally receives: (1) more than 33 1/3 % of its support from contributions, membership fees, and gross receipts from activities related to its exempt functions—subject to certain exceptions, and (2) no more than 33 1/3 % of its support from gross investment income and unrelated business taxable income (less section 511 tax) from businesses acquired by the organization after June 30, 1975. See **section 509(a)(2)**. (Complete Part III.)
- 10 An organization organized and operated exclusively to test for public safety. See **section 509(a)(4)**.
- 11 An organization organized and operated exclusively for the benefit of, to perform the functions of, or to carry out the purposes of one or more publicly supported organizations described in section 509(a)(1) or section 509(a)(2). See **section 509(a)(3)**. Check the box that describes the type of supporting organization and complete lines 11e through 11h.
 - a Type I b Type II c Type III—Functionally integrated d Type III—Other
- e By checking this box, I certify that the organization is not controlled directly or indirectly by one or more disqualified persons other than foundation managers and other than one or more publicly supported organizations described in section 509(a)(1) or section 509(a)(2).
- f If the organization received a written determination from the IRS that it is a Type I, Type II, or Type III supporting organization, check this box
- g Since August 17, 2006, has the organization accepted any gift or contribution from any of the following persons?

- (i) A person who directly or indirectly controls, either alone or together with persons described in (ii) and (iii), below, the governing body of the supported organization?
- (ii) A family member of a person described in (i) above?
- (iii) A 35% controlled entity of a person described in (i) or (ii) above?

	Yes	No
11g(i)		
11g(ii)	N/A	
11g(iii)		

h Provide the following information about the supported organization(s).

(i) Name of supported organization	(ii) EIN	(iii) Type of organization (described on lines 1-9 above or IRC section (see instructions))	(iv) Is the organization in col. (i) listed in your governing document?		(v) Did you notify the organization in col. (i) of your support?		(vi) Is the organization in col (i) organized in the U.S.?		(vii) Amount of support
			Yes	No	Yes	No	Yes	No	
<i>None</i>									
Total									

Part II Support Schedule for Organizations Described in Sections 170(b)(1)(A)(iv) and 170(b)(1)(A)(vi)
 (Complete only if you checked the box on line 5, 7, or 8 of Part I.)

Section A. Public Support

Calendar year (or fiscal year beginning in) ▶	(a) 2005	(b) 2006	(c) 2007	(d) 2008	(e) 2009	(f) Total
1 Gifts, grants, contributions, and membership fees received. (Do not include any "unusual grants.")						
2 Tax revenues levied for the organization's benefit and either paid to or expended on its behalf			N/A			
3 The value of services or facilities furnished by a governmental unit to the organization without charge						
4 Total. Add lines 1 through 3						
5 The portion of total contributions by each person (other than a governmental unit or publicly supported organization) included on line 1 that exceeds 2% of the amount shown on line 11, column (f)						
6 Public support. Subtract line 5 from line 4.						

Section B. Total Support

Calendar year (or fiscal year beginning in) ▶	(a) 2005	(b) 2006	(c) 2007	(d) 2008	(e) 2009	(f) Total
7 Amounts from line 4						
8 Gross income from interest, dividends, payments received on securities loans, rents, royalties and income from similar sources			N/A			
9 Net income from unrelated business activities, whether or not the business is regularly carried on						
10 Other income. Do not include gain or loss from the sale of capital assets (Explain in Part IV.)						
11 Total support. Add lines 7 through 10						
12 Gross receipts from related activities, etc. (see instructions)					12	
13 First five years. If the Form 990 is for the organization's first, second, third, fourth, or fifth tax year as a section 501(c)(3) organization, check this box and stop here <input type="checkbox"/>						

Section C. Computation of Public Support Percentage

14 Public support percentage for 2009 (line 6, column (f) divided by line 11, column (f)).	14	N/A	%
15 Public support percentage from 2008 Schedule A, Part II, line 14	15	N/A	%
16a 33 1/3% support test—2009. If the organization did not check the box on line 13, and line 14 is 33 1/3% or more, check this box and stop here. The organization qualifies as a publicly supported organization <input type="checkbox"/>			
b 33 1/3% support test—2008. If the organization did not check a box on line 13 or 16a, and line 15 is 33 1/3% or more, check this box and stop here. The organization qualifies as a publicly supported organization <input type="checkbox"/>			
17a 10%-facts-and-circumstances test—2009. If the organization did not check a box on line 13, 16a, or 16b, and line 14 is 10% or more, and if the organization meets the "facts-and-circumstances" test, check this box and stop here. Explain in Part IV how the organization meets the "facts-and-circumstances" test. The organization qualifies as a publicly supported organization <input type="checkbox"/>			
b 10%-facts-and-circumstances test—2008. If the organization did not check a box on line 13, 16a, 16b, or 17a, and line 15 is 10% or more, and if the organization meets the "facts-and-circumstances" test, check this box and stop here. Explain in Part IV how the organization meets the "facts-and-circumstances" test. The organization qualifies as a publicly supported organization <input type="checkbox"/>			
18 Private foundation. If the organization did not check a box on line 13, 16a, 16b, 17a, or 17b, check this box and see instructions ▶ <input type="checkbox"/>			

Part III Support Schedule for Organizations Described in Section 509(a)(2)
(Complete only if you checked the box on line 9 of Part I.)

Section A. Public Support

Calendar year (or fiscal year beginning in) ▶	(a) 2005	(b) 2006	(c) 2007	(d) 2008	(e) 2009	(f) Total
1 Gifts, grants, contributions, and membership fees received. (Do not include any "unusual grants.")	\$ 2,350.	\$ 2,800.	\$ 3,600.	\$ 3,075.	\$ 6,550.	\$ 18,375.
2 Gross receipts from admissions, merchandise sold or services performed, or facilities furnished in any activity that is related to the organization's tax-exempt purpose	\$ 230,743	\$ 298,130.	\$ 254,995.	\$ 238,550.	\$ 362,320.	\$ 1,384,738.
3 Gross receipts from activities that are not an unrelated trade or business under section 513	0	0	0	0	0	0
4 Tax revenues levied for the organization's benefit and either paid to or expended on its behalf	0	0	0	0	0	0
5 The value of services or facilities furnished by a governmental unit to the organization without charge	0	0	0	0	0	0
6 Total. Add lines 1 through 5	\$ 233,093.	\$ 300,930.	\$ 258,595.	\$ 241,625.	\$ 368,870.	\$ 1,403,113.
7a Amounts included on lines 1, 2, and 3 received from disqualified persons	0	0	0	0	0	0
b Amounts included on lines 2 and 3 received from other than disqualified persons that exceed the greater of \$5,000 or 1% of the amount on line 13 for the year	0	0	0	0	0	0
c Add lines 7a and 7b	0	0	0	0	0	0
8 Public support (Subtract line 7c from line 6.)						\$ 1,403,113.

Section B. Total Support

Calendar year (or fiscal year beginning in) ▶	(a) 2005	(b) 2006	(c) 2007	(d) 2008	(e) 2009	(f) Total
9 Amounts from line 6	\$ 233,093.	\$ 300,930.	\$ 258,595.	\$ 241,625.	\$ 368,870.	\$ 1,403,113.
10a Gross income from interest, dividends, payments received on securities loans, rents, royalties and income from similar sources	0	0	0	0	0	0
b Unrelated business taxable income (less section 511 taxes) from businesses acquired after June 30, 1975	0	0	0	0	0	0
c Add lines 10a and 10b	0	0	0	0	0	0
11 Net income from unrelated business activities not included in line 10b, whether or not the business is regularly carried on	0	0	0	0	0	0
12 Other income. Do not include gain or loss from the sale of capital assets (Explain in Part IV.)	0	0	0	0	0	0
13 Total support. (Add lines 9, 10c, 11, and 12.)	\$ 233,093.	\$ 300,930.	\$ 258,595.	\$ 241,625.	\$ 368,870.	\$ 1,403,113.

14 **First five years.** If the Form 990 is for the organization's first, second, third, fourth, or fifth tax year as a section 501(c)(3) organization, check this box and stop here

Section C. Computation of Public Support Percentage

15 Public support percentage for 2009 (line 8, column (f) divided by line 13, column (f))	15	1	%
16 Public support percentage from 2008 Schedule A, Part III, line 15	16	1	%

Section D. Computation of Investment Income Percentage

17 Investment income percentage for 2009 (line 10c, column (f) divided by line 13, column (f))	17	0	%
18 Investment income percentage from 2008 Schedule A, Part III, line 17	18	0	%

19a **33 1/3 % support tests—2009.** If the organization did not check the box on line 14, and line 15 is more than 33 1/3 %, and line 17 is not more than 33 1/3 %, check this box and stop here. The organization qualifies as a publicly supported organization

b **33 1/3 % support tests—2008.** If the organization did not check a box on line 14 or line 19a, and line 16 is more than 33 1/3 %, and line 18 is not more than 33 1/3 %, check this box and stop here. The organization qualifies as a publicly supported organization *N/A*

20 **Private foundation.** If the organization did not check a box on line 14, 19a, or 19b, check this box and see instructions

Part IV **Supplemental Information.** Complete this part to provide the explanations required by Part II, line 10; Part II, line 17a or 17b; and Part III, line 12. Provide any other additional information. See instructions.

NONE NEEDED

**ADDITIONAL INFORMATION: FORM 990-EZ 2009
CLOUD RIDGE NATURALISTS EIN# 84-0919233**

Part 1 (Revenue, Expenses, and Changes in Net Assets or Fund Balances):

20. Cloud Ridge must make reservation deposits during 2009 to suppliers/outfitters for seminars that will operate in 2010. Reservation deposits are normally made towards the end of the calendar year when the 2010 booking is confirmed with a given outfitter or service provider. The amount shown on Line 20 represents trip deposits made for 2010 trips, and includes payments made to Sea Wolf Adventures, Pacific Catalyst, Causana Viajes (Argentina), and Holiday River Expeditions.

Part I (Expenses):

10-17. The itemized expenses included in this section include Cloud Ridge's annual liability insurance premium payments, one-time instructor honoraria/seminar, all group travel expenses (bus, raft, boat, expedition ship, van, and plane), all meals, all lodging, all outfitting, special use fees, and operating permits. Cloud Ridge has no full-time, salaried employees and the many instructors donate their teaching services.

Part III (Statement of Program Service Accomplishments)

Cloud Ridge Naturalists Mission Statement: *Cloud Ridge Naturalists supports international conservation efforts by providing high-quality, field-based, and multidisciplinary educational opportunities in the natural sciences to the general public (adults and children) and to scientists working in areas of critical conservation concern around the world.*

Cloud Ridge Naturalists offered the general public 6 educational seminars during 2009; no seminars were cancelled and enrollments were especially strong considering the economic climate. Once again, our focus was on terrestrial and marine ecosystems, with special emphasis on conservation issues associated with global climate change, river system ecology, island biogeography, the impacts of climate change and pollution on marine systems, and the natural history of Arctic and Antarctic regions. Our mission has always been to provide the finest natural history education experiences available and to focus on leading-edge environmental issues and research. The total number of participants in 2009 was 98. Our web brochure describes the seminar offerings and provides the option of online registration for participants. A print copy of the brochure is attached and provides specific information on seminar offerings, instructor biographies, and most logistical details. Seminar summaries are continued from Part III (page 2) below:

31. Seminar #4: Of Northern Goshawks and Kaibab Squirrels: The Life History of a Key Predator and its Prey on the North Rim of the Grand Canyon. (July 5-11)

Instructors: Dr. Richard Reynolds and Dr. Marc Snyder. Participants: 25

Focus: The U.S. Forest Service hosted Cloud Ridge for a weeklong, camping-based seminar focused on the ecology of predator and prey species and the population biology of goshawks.

Expenses incurred: \$9,000.

Grants/Allocations: None

Seminar #5: Realm of the Ice Bear: The Russian Far East and Wrangel Island. (August 4-18)

Leaders: Audrey Benedict, Rodney Russ, and the expedition staff of Heritage Expeditions. Participants: 10

Focus: Arctic natural history, polar bear breeding biology and population dynamics, and climate change impacts related to melting permafrost and sea ice.

Expenses: \$63,357.

Grants/Allocations: None

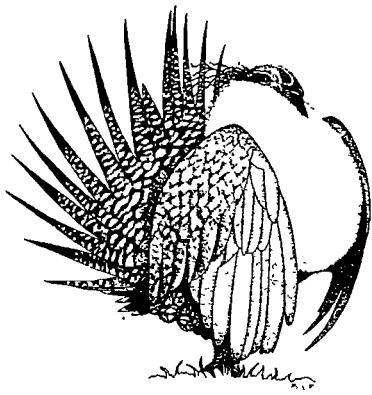
Seminar #6: Of Penguins and Albatrosses: An Expedition to South Georgia (October 3-17)

Leaders: Fathom Expedition's Lecturers and Guides, Audrey Benedict, and the Crew of the M/V Ushuaia. Participants: 14

Focus: Sub-Antarctic natural history, impacts of climate change in Polar Regions, and Shackleton's Antarctic exploration history.

Expenses: \$118,925

Grants/Allocations: None



Cloud Ridge Naturalists

FIELD DISCOVERY SEMINARS

A WORD ABOUT US

Cloud Ridge Naturalists is one of the oldest and most respected nonprofit field schools in the West. Over the past thirty years, from our humble start in 1979, several thousand people have experienced the special blend of education and exploration that Cloud Ridge offers. Our commitment to providing the finest in natural history education and environmentally responsible travel remains the cornerstone of our program. The educational vision behind what we do relies on a multidisciplinary perspective well grounded in state-of-the-art science. Just a glance through the biographies of our leaders should convey the excellence of our faculty—their knowledge, enthusiasm, and talent for teaching are unsurpassed.

Today, more than ever before, the places Cloud Ridge travels to are chosen because they are at greatest risk—the Arctic regions, the marine and island ecosystems of the North Pacific and the North Atlantic, the Antarctic and the Southern Polar Ocean, the temperate rain forests of the Pacific Northwest and their counterparts in the Patagonian Andes, and the West's wilderness rivers. Because we also recognize the powerful role that conservation writers, photographers, and other artists play in environmental education and advocacy, you will find seminar offerings that enable participants to hone these skills as well. We spend our days in some of the world's most beautiful wilderness areas—recognizing their importance to conservation but also their fragility. We take your comfort, safety, and enjoyment seriously—even in the most remote field settings. Wherever we travel, and by whatever means—expedition ship, boat, raft, sea kayak, or on foot—we work only with outfitters whose environmental ethics and operating principles parallel ours. Field seminar groups are small and congenial, creating the best possible atmosphere for

learning. We always select fine lodgings or picturesque campsites that have a strong sense of place, and we make every effort to live up to our legendary reputation for excellent food. Not surprisingly, more than 80% of our participants each year have traveled with us before. That matters to us! Whatever your interests, each of our trips opens a magical window on the natural world! We strive to be the best—at whatever we do.

FROM THE DIRECTOR'S DESK

I'm delighted to be back at the helm of Cloud Ridge Naturalists as we begin our 30th year! In the face of the environmental challenges that lie ahead, my realization that I have no aptitude for retirement should come as no surprise to those of you who have supported Cloud Ridge over the years. Our familiar sage grouse logo, as well as the drawings you've enjoyed in past brochures, are the work of artist and calligrapher Barbara Bash. The drawings that grace this year's brochure, however, introduce the work of a new artist for Cloud Ridge, Marilyn Hailbronner, who also provides medical and logistical support for many of our wilderness-based programs.



As I reflect on our past three decades, I'm extremely proud of Cloud Ridge's unwavering focus on natural history education and the unique opportunities we've offered our participants to explore the complex and beautiful interrelationships that govern the natural world. During these remarkable travels, however, we've also witnessed the many ways that human-wrought changes—global warming, deforestation, toxic pollution, invasive species, habitat fragmentation, overfishing, and losses in biological diversity—are transcending national and ecological boundaries.

The 2008 elections did much to renew my belief in the power of education as a force for change. Wise political leadership remains a global priority, but we must also look beyond the horizons of our own lives and renew our commitment to do whatever we can—individually—to preserve the global fabric of life. The 2007 Nobel Peace Prize, awarded to former Vice President Al Gore and the network of scientists that comprise the UN's Panel on Climate Change, as well as Gore's 2007 Academy Award for his documentary "*An Inconvenient Truth*," were some of the pivotal environmental education achievements of the 21st century. The undeniable combination of meticulous scientific research and a high-profile, passionate voice for action—without equivocation—heralded a sea-change in the public's understanding of the grim realities facing the global community.

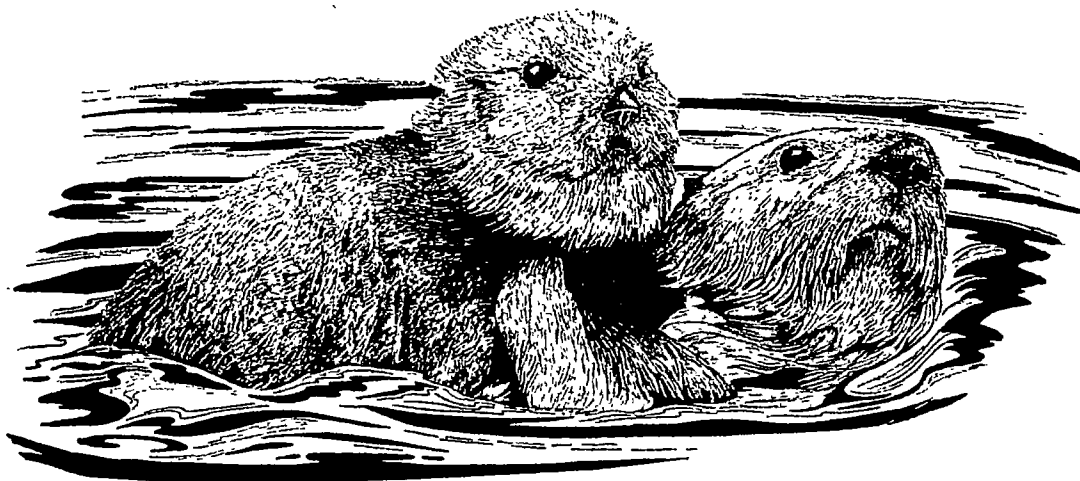
The challenge for us, as Cloud Ridge moves into its fourth decade, is to broaden our support of

international conservation efforts to include three distinct but complementary educational strategies: (1) our traditional field seminar program designed for the general public; (2) the sponsorship of a field-based exchange program for scientists that focuses on a specific ecosystem or conservation issue of critical concern; and (3) support for publishing efforts (both print and visual media) emphasizing natural history and conservation biology. Our first exchange trip for scientists, a 10-day gathering of forest biologists from Argentina, British Columbia, Colorado, and Washington in September 2008, focused on British Columbia's Great Bear Rain Forest and was a huge success. By broadening our nonprofit educational outreach to include the publication of books, research reports, and visual media we hope to engage the hearts and minds of an ever-widening circle of citizen advocates for environmental stewardship.

WILD OCEAN MISTS: A NATURALIST'S VOYAGE TO GLACIER BAY NATIONAL PARK AND LITUYA BAY
May 10-21, 2009

Dr. Al Werner, Audrey Benedict, Kimber Owen, and the *M/V Sea Wolf* Crew

Imagine **Glacier Bay** as John Muir saw it in 1899, as a member of the legendary Harriman Expedition—without the cruise ships, the guidebooks, and interpretive signs that define the modern visitor's experience. Aboard the *M/V Sea Wolf*, a 97-foot vintage wooden boat, we'll have the chance to see this spectacular glacier and fjord landscape



in much the same way that Harriman's scientists did. Glacial geologist Al Werner, like his historic counterpart on the Harriman Expedition, explorer-scientist Grove Karl Gilbert, will help us trace the evidence of climatic change left behind by the advance and retreat of these immense glaciers—the stories behind the scenery both dramatic and compelling. Unlike the big cruise ships, *M/V Sea Wolf* is trim enough to explore the narrowest of fjords and shallow coastal waters. She carries twelve passengers and a crew of five—the perfect size for a voyage such as ours. Best of all, *Sea Wolf* carries a full complement of sea kayaks and a motorized inflatable to enable exploration both far and wide. For those who take paddle in hand, the use of sea kayaks allows a more intimate, seal's eye view of the tidewater glaciers, inlets, islets, and estuary streams that make this coastal wilderness one of North America's richest and most biologically diverse areas.

May is a magical time to be in **Glacier Bay National Park** because we have it largely to ourselves—just the bears, the first returning humpback whales, and the thousands of migrating shore and seabirds bound for Arctic nesting sites. Both Glacier Bay and Lituya are major stops on the Pacific Flyway. Against a backdrop of some of the most magnificent mountains on earth, rivers of glacial ice tumble into the sea and aquamarine-colored icebergs drift by on the tides. Responding to the boom and crash of ice at the glacier front, kittiwakes and Arctic terns swirl over the churning, welling waters in search of food. Western sandpipers and other shorebirds skitter along the shorelines, poking their bills into the food-rich mud and gravels of the intertidal zone. Sea ducks and enormous rafts of harlequin ducks forage in the quiet bays before making the final push to their nesting areas. Grizzlies and black bears, recently emerged from their hibernation dens, can be seen bending down the branches of black cottonwoods to feed on the sweetly-resinous leaf buds, grazing on swards of lush sedges, and scraping succulent barnacles and mussels from rocks along the water's edge. For wildlife, this is indeed a time of plenty.

Along the wild, storm-battered coastline of the Gulf of Alaska, just south of the Tlingit village of Yakutat, a whale-shaped fjord—**Lituya Bay**—lies at the foot of the spectacular Fairweather Range. Nowhere else in the world do mountains tower so far above the sea. The only access to this legen-

dary wilderness arm of Glacier Bay National Park is by small boat or seaplane—well beyond the capabilities of most Park visitors. Lituya Bay is situated at the confluence of three glaciers—the Lituya, the Cascade, and the North Crillon—and centered along a T-shaped epicenter of intense geologic activity known as the Fairweather Fault. Since 1899, nine earthquakes have rumbled across the region, toppling mountains and flaying this ice-carved land to its bedrock roots. In 1958, a magnitude 8.3 earthquake centered on Cross Sound, located forty-five miles to the southeast, set the fjord into earth-wrenching motion. The collapse of an entire mountainside near the head of Lituya Bay triggered a 1,740-foot tsunami-like wave. The wave completely decapitated the snout of Lituya Glacier, scoured all the trees from the walls of the fjord, and destroyed three fishing boats anchored in the bay. The swirling maelstrom took a tremendous toll on the bay's wildlife—seabirds, fish, marine animals, whales, bears, and wolves. For humans, the quake was no less devastating. Today, despite its violent history, Lituya Bay offers some of the most spectacular wilderness to be found anywhere. Join us for this very special voyage of discovery!

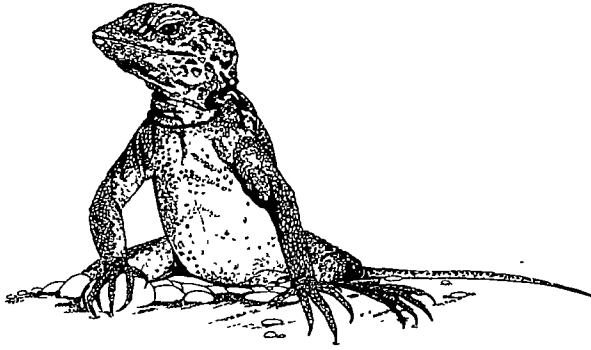
Price: \$4,850 (includes a \$500 deposit)

Group Size: 12 Trip Rating: 2-3

Price Includes: 10 nights/10 days aboard the *M/V Sea Wolf*, comfortable cabins with private facilities, all meals and beverages, one group dinner in Juneau, the services of a five-person crew and three naturalist leaders, a copy of *The Nature of Southeast Alaska*, one night's lodging in Juneau (May 20), roundtrip/scenic charter float-plane flight (includes a 1 hr. 45 min. scenic tour) from Juneau to Gustavus and back, all boat/hotel transfers, full sea kayak outfitting and instruction, and gratuities to the *Sea Wolf* crew. Does not include roundtrip airfare or other transportation to Juneau from your point of departure.

More information? Visit **Sea Wolf Adventures** at <http://www.seawolf-adventures.com> for pictures of the *M/V Sea Wolf*, the boat's layout, amenities, and crew biographies. For the adventure-bound, mobility-challenged traveler, the *M/V Sea Wolf* has been retrofitted for wheel chair accessibility and provides a lift between decks and full sea kayak support.





OF TIGER WALLS AND CANYON WRENS: A NATURALIST'S JOURNEY ON THE YAMPA AND GREEN RIVERS

May 24-30, 2009 - 7 Days/ 6 Nights
Audrey Benedict, Dr. Emmett Evanoff,
Dr. Geoff Hammerson, Dee and Sue Holladay,
Dr. Mike Scott, and Dr. Ed Wick

The Yampa is one of the premier wilderness rivers in North America—a world where life is written in water and history in rock. Gathering strength from its two main tributaries, the Elk and the Little Snake, the Yampa has carved a spectacular canyon through the eastern arm of Dinosaur National Monument. Our oar-powered raft journey begins at Deer Lodge Park, at the Monument's eastern edge. In the capable hands of our guides from **Holiday River Expeditions** and benefiting from the expertise of our remarkable team of leaders, we'll spend five days exploring canyon worlds powered by the energy of the desert sun and shaped by the flow of a river that still dances to its ancient rhythms. The stage is set by the extraordinary geology of this water-sculpted landscape—the stories behind the scenery both dramatic and compelling.

The river is truly the lifeblood of this desert country. As we float through a succession of buff and vermillion canyons refreshed by the verdure of cottonwoods and boxelders, the flutelike songs of canyon wrens echo from the canyon walls. Not surprisingly, the Yampa remains the last stronghold of the Colorado River System's endangered native fish species—their unique life histories rivaling those of the Pacific Northwest's legendary salmon. The names of the places we pass on this 71-mile float trip—Mather's Hole, Tiger Wall, Warm Springs Rapid, Steamboat Rock, Mitten Park Fault, Whirlpool and Split

Mountain canyons—are part of the rich fabric of river lore. Join us for our 20th journey on the magnificent Yampa River—an unparalleled wilderness and learning experience.

Price: \$1,350 (includes a \$500 deposit)

Group Size: 20 Trip Rating: 2

Price Includes: 5-day raft trip (oar-powered) by **Holiday River Expeditions**, all river transfers, crew gratuities, six naturalist guides, all meals and beverages on the river, a final group dinner, and 2 nights' lodging at the Best Western Dinosaur Inn in Vernal, Utah. Does **not** include camping gear (which can be rented from Holiday) or roundtrip transportation to Vernal, Utah from your point of departure. Our river adventure begins on May 24 at 8 pm in Vernal and concludes with departure for home on the morning of May 30th.

IMAGES OF WILDERNESS: SOUTHEAST ALASKA'S INSIDE PASSAGE

June 6-14, 2009 9 Days/ 8 Nights
Ron Russo, Audrey Benedict, and the
Crew of the *M/V Catalyst*

Few places in North America rival the scenic beauty and wildlife diversity of Southeast Alaska's Inside Passage. Join us aboard the *M/V Catalyst*, a 76-foot classic wooden boat, for a 7-day voyage to the spectacular fjords, islands, and tidewater glaciers of Frederick Sound, Thomas Bay, Endicott Arm, and Ford's Terror. Humpback whales are often common here, attracted by the abundant food to be found in these protected waters. It is also possible to see Steller's sea lions, harbor seals, both black and brown bears, bald eagles, and a diversity of seabirds. Anchoring at the Brothers Islands provides opportunities for tidepool discoveries, superb sea kayaking, and magical hikes in pristine, bear-free rainforest.



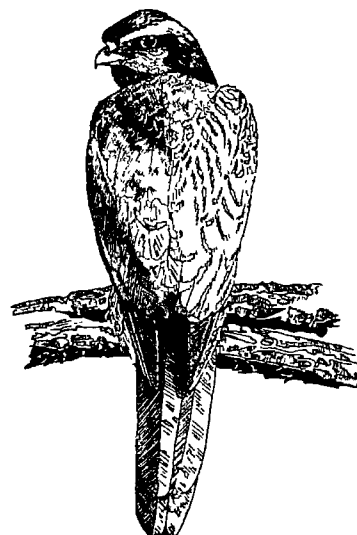
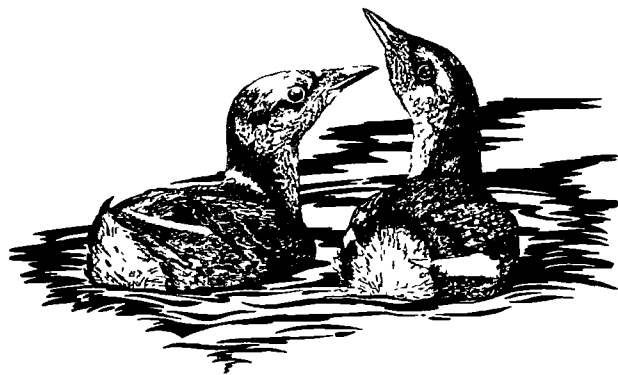
The *M/V Catalyst* was built in 1932 as a floating laboratory for the University of Washington. This “salty, historic treasure,” with its mahogany interior and lace curtains, continues to be lovingly maintained and refurbished by its owners, Bill and Shannon Bailey. The *Catalyst* carries twelve passengers and a crew of four. Mysteriously, the heartbeat of the *Catalyst’s* 17,000-pound iron engine creates a bond that passengers find difficult to break at journey’s end. Best of all, *Catalyst* carries a full complement of sea kayaks and a motorized inflatable to enable explorations both far and wide. The use of sea kayaks allows a more intimate, seal’s eye view of the inlets, islets and estuaries. Beginning sea kayakers will find it an easy, non-intimidating setting in which to learn. Feasting on a dinner of fresh-caught seafood and sharing the day’s discoveries over a glass of wine, it’s easy to conclude this is the best way to experience Southeast Alaska!

Price: \$3,850 (includes a \$500 deposit)

Group Size: 12 Trip Rating: 3

Price Includes: 6 nights/7 days aboard the *M/V Catalyst*, all meals and beverages, 2 nights’ lodging (June 6 in Petersburg and June 13 in Juneau), two group dinners ashore, the services of a four-person crew and two naturalist leaders, full sea kayak outfitting and instruction, a copy of *The Nature of Southeast Alaska*, all boat/hotel transfers, and gratuities to the *Catalyst* crew. The price quoted is per person based on double occupancy; a single supplement of \$250 is required of passengers desiring non-shared hotel accommodations. Does not include airfare to Petersburg, Alaska from your point of departure or your return flight from Juneau.

Need more information? Visit the **Pacific Catalyst** website for pictures of the boat, cabin details, interior spaces and amenities, and crew biographies. www.pacificcatalyst.com



OF NORTHERN GOSHAWKS AND KAIBAB SQUIRRELS: THE LIFE HISTORY OF A KEY PREDATOR AND ITS PREY ON THE GRAND CANYON’S NORTH RIM

July 5-11, 2009 7 Days/6 Nights
Dr. Richard Reynolds and Dr. Marc Snyder

The northern goshawk’s pursuit of the squirrel is a fearsome blur, the final capture a marvel of unerring and deadly precision. Even as the goshawk relaxes the death grip of its talons, it’s the hunter’s amazing eyes—large, red and glowing—that will remain a lasting memory. Revered throughout human history as a symbol of strength and power, it is hardly surprising that the image of a northern goshawk adorned the helmet of Attila the Hun—or that in medieval Europe, goshawks were the most prized of all falconry hawks.

Viewed from the North Rim, the Grand Canyon is a tortuous, deeply gouged rockscape cleaved by an emerald green river, the Colorado, churning away some 3,000 feet below. Undeniably, superlatives come readily to mind when describing the Grand Canyon. At Point Sublime, the bustling tourist mecca of the Grand Canyon’s South Rim lies but seven miles away as the raven flies—but a world apart in every way. The North Rim is geographically part of the Kaibab Plateau, a magnificent landscape that harbors some of the most uniquely beautiful remnants of pre-settlement, old-growth ponderosa pine forest in the West. Two species of extraordinary interest occur here: the northern goshawk, one of the rarest of all raptors, and the beautiful Kaibab squirrel, a silvery-

tailed subspecies of the tassel-eared squirrel, which has evolved in geographical isolation over thousands of years. This remote area also serves as the principal stronghold for a re-introduced population of endangered California condors. Wildlife biologist Richard Reynolds and a dedicated team of researchers and volunteers recently completed 18 years of ecological and habitat research focused on the northern goshawk and its food web—perhaps the most intensive study of a raptor ever undertaken. Over 123 breeding pairs of northern goshawks were identified, banded, and monitored during the course of the study. To understand the intricate relationship that exists between the goshawk and its principal prey species, biologist Marc Snyder joined the research effort, focusing his efforts on the population ecology and habitat requirements of tree squirrels and the ways in which these herbivores have shaped the genetic makeup of the forests on which the goshawk depends.

This exciting, hands-on field seminar exemplifies the unique experiences that have become a Cloud Ridge tradition. We'll join the researchers in trapping and banding adult goshawks (using mist nets and live great horned owls as lures), assist with tree rigging and climbing efforts to band juvenile goshawks at their nests, help with visual surveys of active nests and identify the presence of previously-banded goshawks, learn to identify optimal goshawk nesting and foraging habitat, observe Kaibab squirrels and other prey species that comprise the goshawk's food web, and discuss the major factors affecting prey abundance (weather, masting in conifers, etc.). Our base camp will be the U.S. Forest Service's Big Springs Ranger Station, located near Jacob Lake, Arizona. We'll also spend two nights camped at Marble View Point, one of the most spectacular settings on the Grand Canyon's North Rim, taking time to hike canyon rim trails and explore the stunning forest ecosystems of the Kaibab Plateau. We'll examine the role of fire as a dynamic force in forest ecology and discuss the science behind the current strategies being proposed to manage these forests—the ultimate test for the long term survival of the northern goshawk. Don't miss this extraordinary opportunity to participate in the most important goshawk research effort ever undertaken—and the chance to explore the Grand Canyon's legendary North Rim!

Price: \$1,350 (includes a \$500 deposit)

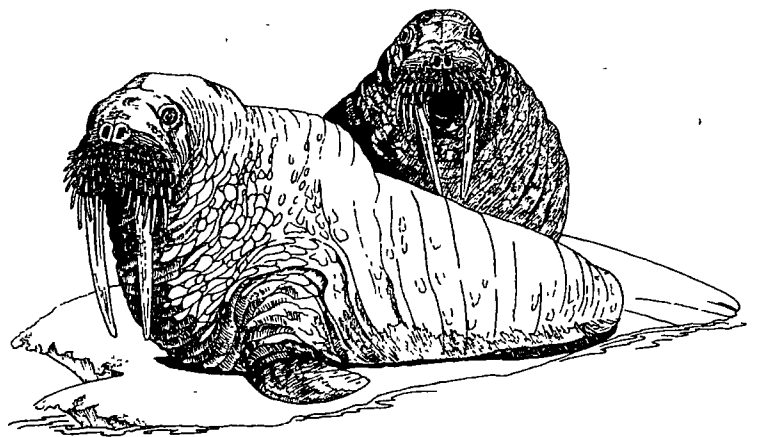
Group Size: 16 Trip Rating: 3

Price Includes: all instruction and instructional materials, USFS and NPS camping fees and entrance permits as required, use of hot showers and other amenities at the Big Springs Ranger Station, 16 gourmet camping meals provided by your Cloud Ridge chefs, and all transport in 4WD vehicles to the field areas. Does **not** include transportation to or from the Big Springs Ranger Station from your point of departure, basic camping equipment (tent, sleeping bag, and pad), or meals other than those listed. We recommend that anyone not wishing to drive the entire distance take advantage of the inexpensive flights to Las Vegas and rent a car at the airport for the two-hour drive south. The seminar begins at 4 pm on July 5 (Sunday) at the Big Springs Ranger Station and concludes with your departure for home on the morning of July 11 (Saturday).

THE REALM OF THE ICE BEAR: THE RUSSIAN FAR EAST AND WRANGEL ISLAND

August 4-18, 2009 15 Days/14 Nights
Audrey Benedict, Rodney Russ and the Heritage Expeditions Staff, and the Russian Crew of the *Spirit of Enderby*

The essence of Chukchi shamanism is a belief in the unique relationship between humans, nature, and the world inhabited by spirits. In our culture, there are no shamans to remind us how rapidly global warming is impacting human cultures and ecosystems throughout the circumpolar Arctic. A late summer voyage to the Russian Far East—the realm of polar bears, walrus, bowhead, beluga,



and gray whales, seals, millions of seabirds, and the traditional homeland of the Chukchi people—is a gift made possible by melting sea ice and by the fall of the Cold War “Ice Curtain” that once separated the Russian Far East and Arctic Alaska. This amazing expedition begins with an easy charter flight on Bering Air from Nome, Alaska to Anadyr, located at 65°N in Russian Chukotka, where we board the 48-passenger *Spirit of Enderby*, an ice-hardened Russian-owned ship under charter to New Zealand-based **Heritage Expeditions**. Aboard our comfortable ship and using zodiacs for shore landings, we’ll head north along the Chukotka Peninsula, navigating the legendary “Whale Alley,” which is delimited by the beautiful and uninhabited islands of Arakamechen and Yttygran. Once a center for ritualized whale worship, these islands are most famous for their spectacular whalebone structures.

Continuing on towards Cape Dezhnev, we’ll visit the Chukchi village of Uelen, where villagers still make their living by hunting walrus in traditional ways. The Chukchi are unusual among Arctic peoples in having two distinct cultures: the village-based marine mammal hunters (*ankalyn*) and the nomadic reindeer herders (*chauchu*) of the tundra interior. They are a handsome people, famous for their boat-making skills, especially their walrus-skin umiaks, their exquisitely beaded and decorated skin clothing, and for their expertise in domesticating reindeer. The Uelen Chukchi are also renowned for their superb fossil mammoth and walrus tusk ivory scrimshaw and sculptures. The Chukchis endured mass imprisonment and multiple attempts at cultural genocide at the hands of the Russians and were among the last groups to resist the eventual conquest of Siberia. Today, they have largely returned to a traditional, subsistence-based lifestyle. Our final landing in the area will be at spectacular Kolyuchin Island, now a wildlife sanctuary known for its seabird nesting cliffs and walrus haulouts.

Traveling through the Bering Strait, we cross the Arctic Circle and sail into the icy waters of the Chukchi Sea—to our most northerly destination, the UNESCO World Heritage Site of Wrangel Island, located at 71°14’N. Wrangel is frequently referred to as the “Polar Bear Maternity Ward” because it has the highest density of polar bear dens in the world. In fact, polar bear biologists regard Wrangel Island as the single most important refuge for the increasingly threatened Alaska-

Chukotka polar bear population. The timing of our trip should afford us some wonderful observation and photographic opportunities. Mountainous Wrangel Island is extraordinary for its biodiversity, with more than 400 plant species, 160 migratory bird species, the world’s largest population of Pacific walrus (up to 100,000 in recent years), musk ox, Siberian reindeer, and Arctic fox.

Cruising south to Cape Schmidt, we launch our zodiacs at the mouth of the Amguema River and explore tiny Lena Island. Continuing along the coast, we’ll visit wildlife-rich Kolyuchinskaya and Belyaka Inlets before heading to Provideniya, situated at the head of a picturesque fjord. Here, we’ll travel inland, driving across the tundra in sturdy Russian-built trucks (called Urals), to visit a group of nomadic Chukchi reindeer herders at their encampment. Spending a night in a reindeer-skin tent, or *yaranga*, is an experience never to be forgotten. Please join us for this amazing, once-in-a-lifetime voyage to the Russian Far East!

Group Size: 10 Trip Rating: 3

Price and Availability: We are currently full and can only accept wait-list reservations at this time. Please call or email us for information on space availability. Land/cruise prices quoted below are per person based on double occupancy and according to the cabin category available. The cost does not include possible fuel surcharges to be determined by Heritage Expeditions, Russian visas, alcohol or other items of personal choice, gratuities to the ship’s crew, pre- or post-trip accommodations in Anchorage or Nome if desired, roundtrip airfare to Nome from your point of departure, or the roundtrip Bering Air charter flight.

(1) Main Deck Cabin: \$8,271.

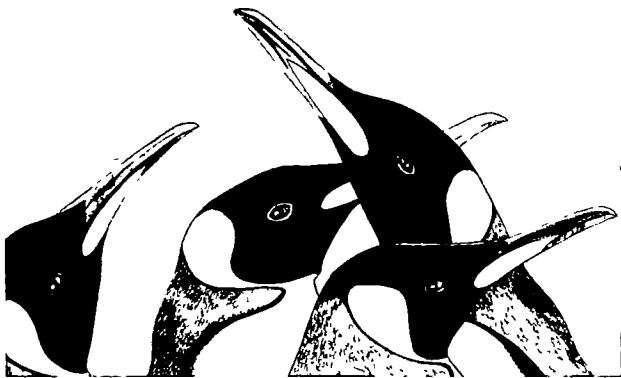
Lower deck location, two lower berths, port-hole, desk, washbasin, and shared bathroom.

(2) Superior Cabin: \$8,872.

Middle Deck location, window, upper and lower berths, desk, settee, and private bathroom.

(3) Superior Plus Cabin: \$9,344.

Middle or Upper Deck location, two lower berths, window, desk, settee, and private bathroom.



**OF PENGUINS AND ALBATROSSES:
AN EXPEDITION TO SOUTH GEORGIA**
October 3-17, 2009 15 Days/14 Nights

**Audrey Benedict and Fathom Expedition's
Lecturers and Expedition Guides, including
David German, Tim and Pauline Carr, Robert
Reader, and the Crew of the *M/V Ushuaia***

Our voyage to the legendary Antarctic outpost of South Georgia Island is the culmination of a long-held dream of mine—an unquenchable desire to return to the spectacularly beautiful island that is home to the greatest concentration of Antarctic and sub-Antarctic wildlife on the planet. **Fathom Expedition's** founder and expedition leader, David German, a veteran of more than 50 land and sea expeditions to the Antarctic, shares this passion, referring to the voyage as “Pure South Georgia.” If you need further enticement, sit down with a copy of *Antarctic Oasis: Under the Spell of South Georgia*, the fabulous book written by trip leaders, Tim and Pauline Carr. World-renowned for their seamanship, the pair sailed their 28-foot wooden cutter *Curlew* to South Georgia in 1992, falling under the island's spell and becoming its first year-round residents since the whaling days.

Undeniably remote, South Georgia lies more than a thousand miles east of Cape Horn and nearly the same distance northeast of the Antarctic continent. The closest major landfall is the Falkland Islands, more than 870 miles away—which is where we'll join our expedition ship, the 82-passenger *M/V Ushuaia*. Famous in the annals of Antarctic exploration, South Georgia was Shackleton's ultimate landfall and the setting for the dramatic finale to the saga of the ill-fated *Endurance* expedition. The 800-mile, 17-day voyage from Elephant Island in an open longboat and the arduous cross-

ing of the island's mountainous interior to reach the whaling station at Stromness is remarkable not only for the bravery of the explorers but for the fact that the entire expedition survived the ordeal.

South Georgia is most often described as a polar version of the Alps—one that rises straight out of the sea. Geologically speaking, the island forms the crest of the Scotia Ridge, a line of mountains some 2,700 miles long that links the ranges of the Antarctic Peninsula with the Andes along a submarine, eastward-arcing loop. Spectacular glaciers and ice caps grace South Georgia's 100-mile-long extent. Situated well south of the Polar Front—almost at right angles to the main westerly drift—it is the “rock” in the current around which the waters of the Weddell and Ross seas meet and swirl, producing a nutrient-rich soup that supports an amazing diversity of marine and terrestrial life.

My first glimpse of South Georgia was of stunning glaciers amidst pinnacles of black rock—all beneath an ice blue sky graced by soaring wandering albatrosses. Wherever I looked, verdant green headlands gave way to rocky beaches literally covered with thousands of king penguins, their white breasts and golden bibs and ear patches glinting in the sun. Southern elephant seals, packed in noisy, grunting rows a dozen deep, and gangs of feisty Antarctic fur seals vied for the best patches of beach amidst the cacophonous squabbling of the penguins. The diversity and abundance of wildlife is unparalleled—including at least three species of seals, thousands of king, gentoo, chinstrap and macaroni penguins, thousands of wandering, gray-headed, light-mantled sooty and black-browed albatrosses, several species of petrels, skuas, and prions, as well as an endemic teal and the most southerly songbird in the world, the South Georgia pipit. Our voyage coincides with the peak of spring migration, courtship, and nesting for most of the island's birds. Battling elephant seals will be staking out their beach strongholds, and we should have superb opportunities for observing and photographing wildlife wherever we go. With the luxury of time, we'll be able to hike to the remotest parts of the island and explore beaches and bays rarely visited. There will be opportunities to hike parts of Shackleton's route, in keeping with the trip's strong Shackleton theme, as well as time to climb the ridges for an albatross's cliff-top view. Each day we'll use our fleet of Zodiacs to their fullest, landing on beaches, cruising glacier

faces, and photographing icebergs and wildlife. Throughout the journey, our lecturers will offer presentations on Antarctic exploration and whaling history, and the biology of penguins, albatrosses, seals, whales, and other wildlife. The comfort of our expedition ship, combined with innumerable culinary delights and fine wines, are sure to guarantee warmth and smiles at the end of every day. Join us for this very special expedition!

Group Size: 10 Trip Rating: 3-4

Price: Land/cruise prices quoted below are per person based on double occupancy and according to the cabin category chosen. A deposit of 25% of the trip cost, payable by check to **Fathom Expeditions**, is required to reserve space.

Price Includes: Pre- and post- trip personalized support from the expedition team; a comprehensive departure kit; one nights' lodging at the Santiago Airport Hilton pre-cruise; 14 nights accommodations and all meals aboard the *M/V Ushuaia*; welcome and farewell dinner events; all group activities and excursions; all services of the expedition staff, including lectures, briefings, slide/film shows; access to public viewing areas and the ship's bridge; all Antarctic and South Georgia permits; all landing fees/permits; access to historic sites and museums; all safety equipment and major expedition equipment; all photographic seminars; a comprehensive expedition log of the voyage.

Not included: Roundtrip air transportation to Santiago, Chile from your home airport; the roundtrip charter flight (group rate) from Santiago to the Falklands (arranged by Fathom Expeditions); excess baggage charges; personal items such as laundry, bar charges (wine or liquor), travel insurance, passport and visa fees as needed, or gratuities to crew and staff.

• **Superior AA Cabin - \$8,995 per person.** Twin outside cabins with windows on the upper deck, private facilities, two lower berths.

• **Twin A Cabin - \$7,995 per person.** Twin outside cabins with large portholes on the upper deck, private facilities, two berths (upper/lower).

Visit **Fathom Expedition's** website for more information, pictures of the ship, cabin details, interior spaces and amenities, and staff biographies.

www.fathomexpeditions.com

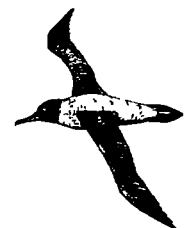
CLOUD RIDGE LEADERS & STAFF

Audrey Benedict is the Founder and Director of Cloud Ridge Naturalists. Trained as a biologist and geologist, Audrey has guided groups in the field and at sea for nearly thirty years, drawing on her broad knowledge of the natural history of mountainous and oceanic environments in many parts of the world. Her favorite places include the Southern Rockies, the northern and southern circumpolar regions, and the temperate rain forests of the Andes and the Pacific Northwest. She is the author of *Valley of the Dunes: Great Sand Dunes National Park and Preserve* (2005) and *The Naturalist's Guide to the Southern Rockies* (2008).

Dr. Emmett Evanoff is Assistant Professor of Geology in the Geology Department at the University of Northern Colorado, and a Research Associate at the Denver Museum of Nature and Science. His research over the years has focused on the study of paleoenvironments—the “story behind the scenery.” Emmett brings to his teaching a tremendous knowledge of regional geology and a contagious enthusiasm for the geologic events that have shaped western landscapes.

Dr. Geoff Hammerson is a Research Zoologist for NatureServe, and lives in Port Townsend, WA. In addition to his research, Geoff teaches courses in field ecology and marine ecosystems at Wesleyan University and elsewhere. The author of *Amphibians and Reptiles of Colorado* and *Connecticut Wildlife*, he is currently working on a field guide to the natural history of the Yampa River. Always adding new dimensions to his natural history expertise and teaching, Geoff is best known for his gentle ability to coax the most reluctant animal to share its secrets with students.

Kimber Owen wears many hats—owner of the *M/V Sea Wolf* and Sea Wolf Adventures, Captain, naturalist, and conservationist. Her passion for Alaska and its wildlife is unsurpassed and is reflected in her mission to make the *M/V Sea Wolf* a platform for conservation education throughout the Pacific Northwest. Kimber's experience in creating “Leap of Faith,” a therapeutic riding center in Texas, inspired her retrofit of the *Sea Wolf*—total accessibility in the service of wilderness education without barriers!



Dr. Richard Reynolds is Senior Research Wildlife Biologist with the U.S. Forest Service's Rocky Mountain Station in Fort Collins, Colorado. He has studied the behavioral ecology of forest raptors for more than 40 years with an emphasis on flammulated owls in Colorado, northern goshawks in the ponderosa pine forests of Arizona's Kaibab Plateau, and spotted owls in both the Pacific Northwest and Colorado. Richard has headed the Forest Service's Northern Goshawk Project for the past 18 years—the most ambitious and in-depth raptor research project ever undertaken. He is an outstanding teacher in the field, his passion for northern goshawks and forest ecology unmatched.

Ron Russo has taught natural history and interpretation for more than 40 years, retiring a few years ago as Chief of Interpretive Services for the East Bay Regional Park District in California. Though Ron's special expertise is in marine biology, he's well known for the remarkable breadth of his knowledge of natural history. He is the author of more than 25 magazine and journal articles, as well as eight field guides, including: *Pacific Coast Fishes*, *Pacific Intertidal Life*, *Pacific Coast Mammals*, *Rocky Mountain Mammals*, *Hawaiian Reefs*, and *Field Guide to Plant Galls of California and other Western States*. Ron is an outstanding and inspiring field naturalist and has led 16 previous *Catalyst* trips for Cloud Ridge!

Dr. Mike Scott is Senior Research Ecologist for the U.S. Geological Survey and an Affiliate Faculty member of the Biology Department at Colorado State University. He is the author of numerous articles in scientific journals, his research focusing on the biology and ecology of cottonwoods, tamarisk, and other riparian tree species of the Colorado River System, as well as on efforts to develop a predictive understanding of how riparian vegetation responds to human-induced changes in stream flow. Mike is an excellent field teacher, and is enthusiastic in sharing his broad knowledge of riparian systems with others.

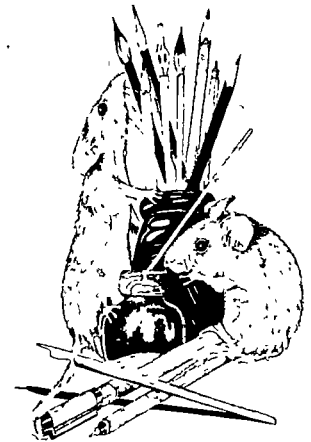
Dr. Marc Snyder is Associate Professor and Chair of the Biology Department at Colorado College, where he teaches courses in evolutionary ecology, vertebrate zoology, animal-plant interactions, and chemical ecology. In addition to his work on the Kaibab Plateau in conjunction with the Northern Goshawk Project, Marc's research

has emphasized the chemical ecology and evolutionary genetics of coniferous forests and the role that herbivores play in shaping forest ecosystems. He is a wonderful field teacher and his fascination with forest ecology is absolutely contagious!

Dr. Alan Werner is Professor of Geology at Mount Holyoke College in South Hadley, Massachusetts. A specialist in glacial geology, environmental geology, and climate change, Al has conducted research in remote arctic and alpine environments for more than 25 years. He and his students have worked from Alaska to the Canadian Arctic to Spitsbergen. Al's enthusiasm and love for glaciated landscapes the world over makes him a compelling and dynamic field teacher.

Dr. Ed Wick has studied the biology, behavioral ecology, and habitat requirements of the native fish species of the Colorado River System for more than 35 years. As both a private research consultant and working in conjunction with numerous governmental agencies, Ed has focused his research efforts on the Yampa, Green, Little Snake, White, and Colorado Rivers. He is an extraordinary field teacher—an eloquent spokesman for the conservation of the native fish of the Colorado River System.

Marilyn Hailbronner's drawings—rendered in pen and ink and color wash—are a reflection of her great love for the natural world and her passion for conservation. Her work as a medic for Cloud Ridge and other organizations has taken her to remote wilderness areas all over the world. But when she's not "on call," you'll find Marilyn observing and drawing the artistry she sees in nature. You can purchase Marilyn's work by contacting the artist at: www.wildinkwell.com



◆ **CLOUD RIDGE BROCHURE CREDITS** ◆
Brochure design and text by Audrey Benedict. All artwork, except our sage grouse logo and the collared lizard on the last page, is by Marilyn Hailbronner (Wild Inkwell). Printing by Silver Star, Inc., Boulder, CO. Our web brochure: www.CloudRidge.org is produced by Clyde Lovett (Crestone Creations).

CLOUD RIDGE NATURALIST'S REGISTRATION FORM

NAME: (Mr./Ms./Mrs./Dr.)

(1) _____

(2) _____

ADDRESS:

Street or P.O. Box: _____

City: _____

State: _____

Zip: _____

PHONE: (Day & Evening) _____

E-MAIL: _____

I (WE) WOULD LIKE TO REGISTER FOR:

(1) _____

(2) _____

ENCLOSED IS MY CHECK, PAYABLE TO CLOUD RIDGE NATURALISTS, IN THE AMOUNT OF: \$ _____; PLEASE INDICATE THE TYPE OF PAYMENT BELOW WITH A CHECK MARK:

_____ **Deposit** All deposits are shown in parentheses, payable to Cloud Ridge Naturalists unless otherwise noted. Unfortunately, Cloud Ridge cannot accept credit cards.

_____ **Deposit (Russian Far East or South Georgia Island)** Deposits of 25% of the total trip cost are required to reserve space on these trips.

_____ **Full Payment.** The balance for all Cloud Ridge trips is due, less the deposit, 90 days prior to departure unless otherwise noted.

In addition, I would like to make a tax-deductible contribution to Cloud Ridge Naturalists:

\$ _____ **Cloud Ridge Supporting Membership (\$25)**

\$ _____ **Cloud Ridge Sponsor (\$50 or more)**

Sponsor Premium: CRN King Penguin T-Shirt Size: S () M () L () XL ()

_____ **I do not wish to receive a premium.**

\$ _____ **Cloud Ridge International Conservation Education & Research Fund**

ACCOMMODATIONS:

Male Female Your Age _____; Single Preferred Double Two Twins
 Roommate Preferred

SPECIAL INTERESTS: _____

DIET PREFERENCES:

Regular Diet Vegetarian w/Fish Vegetarian no/Fish No Dairy

FOOD ALLERGIES? NO YES Please specify below:

SPECIAL NOTE: ALL OF OUR TRIPS ARE NON-SMOKING

PASSPORT INFORMATION REQUIRED FOR ALL INTERNATIONAL TRIPS:

(1) Name (on passport) _____

Passport # _____ Date of Issue _____

Expiration Date _____ Date of Birth _____

(2) Name (on passport) _____

Passport # _____ Date of Issue _____

Expiration Date _____ Date of Birth _____

Mail your completed form to:

Cloud Ridge Naturalists
8297 Overland Road
Ward, CO 80481

Questions? Contact: Audrey Benedict

Email: cloudridgeadb@earthlink.net

Phone: (303) 459-3248 **Web Brochure:** www.CloudRidge.org

Would you like us to mail a brochure to a friend?

TRIP RATINGS

We rate our trips to assist you in choosing the learning adventure that's right for you. Trips are assigned a number from 1 to 4 according to the degree of activity and fitness required. A careful reading of our trip descriptions should provide additional information about specific trip activities such as hiking or sea kayaking.

(1) **EASY:** Hotel, lodge, ship, or boat-based, no camping, hikes of up to 2 miles, and minimal exposure to high elevations.

(2) **EASY TO MODERATE:** Lodge, ship, or camping based, hikes of 2-4 miles, optional sea kayaking, possible small plane travel, and moderate elevation gains

(3) **MODERATE TO STRENUOUS:** Expedition ship, small boat, or raft-based, remote wilderness localities, possible primitive camping, small plane travel as needed, and trail or off-trail hikes of up to 6-8 miles over rugged, mountainous terrain.

(4) **STRENUOUS:** Expeditionary and rugged in nature, primitive camping or ship-based, full-day hikes in steep, mountainous terrain, some hikes in excess of 8 miles, and possible sea kayaking or whitewater rafting.

A WORD ABOUT EXPEDITION TRAVEL

Because of the agility required on most expeditionary-class ships or on raft-based trips, participants with serious disabilities, chronic heart and/or respiratory conditions, or other potentially debilitating medical conditions are advised **NOT** to register for these trips. Please note that the *M/V Sea Wolf* is rated as fully **Accessible**. By forwarding the registration deposit for any trip rated 3 or 4 you are certifying that you are in good physical health and capable of performing all normal activities on the expedition.

TRIP CANCELLATION & TRAVEL INSURANCE

We **require** that all trip participants purchase travel insurance that includes **trip cancellation** and **medical emergency/evacuation coverage**. Doing so protects your travel investment in the event of illness or injury to you or to a family member prior to or during the trip. Contact Cloud Ridge or one of our recommended travel insurance providers for a brochure describing the range of insurance options available. Emergency evacuation from remote, wilderness sites is extremely expensive and is generally not included in standard medical insurance policies. Participants covered by Medicare are advised that Medicare does not provide coverage outside the U.S.; a travel insurance policy does. A word to the wise traveler—***Don't leave home without it!***

REGISTRATION & PAYMENT

To register for one of Cloud Ridge's expeditions, simply fill out the registration form and send it to us, along with your **non-refundable** deposit. In the event that a trip is full, we'll add your name to a wait-list and return your deposit. Trip prices are based on double occupancy. Should you wish single accommodations (when available) or have no roommate and we are unable to assign one, please be advised that you will need to pay a single supplement. The balance of all tour fees is due **90 days** prior to departure. Registrations received **within 90 days** of departure must include payment in full.

CANCELLATION POLICY

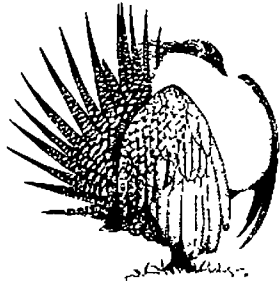
All cancellations must be made in writing. Because we send payments to our travel suppliers well in advance of our departures, we cannot offer refunds beyond those described below. Cancellation refunds are made according to the following schedule:

- ◆ Cancellation received **90 days or more** prior to a trip's departure, all trip costs, less the deposit, will be refunded. The deposit will also be refunded if we are able to fill your space from a wait-list.
- ◆ Cancellation received **less than 90 days** prior to departure, no refund is possible unless we can fill your space from a wait-list.

CONTRIBUTIONS

Cloud Ridge Naturalists is a **nonprofit, tax-exempt 501(c)3** organization providing high quality educational opportunities in the natural sciences and financial support to entities and individuals conducting research in critical areas of conservation concern. If you feel that you would like to become a **Supporting Member (\$25) or a Sponsor (\$50 or more)**, we would be sincerely grateful. All contributions, unless you wish to support a specific project, are placed in a special fund to underwrite our scholarships or to defray Cloud Ridge operating expenses. For more information, please contact:

Cloud Ridge Naturalists
Audrey Benedict
8297 Overland Road
Ward, CO 80481 USA (303) 459-3248
Email: clouderidgeadb@earthlink.net
Web Brochure: www.CloudRidge.org



PRE-SORTED
FIRST-CLASS MAIL
U S. POSTAGE PAID
Boulder, CO
Permit No. 537

*Cloud Ridge
Naturalists*

*8297 Overland Road
Ward, CO 80481*

Return Service Requested



61