



See a Social Security Number? Say Something!
Report Privacy Problems to <https://public.resource.org/privacy>
Or call the IRS Identity Theft Hotline at 1-800-908-4490





See a Social Security Number? Say Something!
Report Privacy Problems to <https://public.resource.org/privacy>
Or call the IRS Identity Theft Hotline at 1-800-908-4490



Return of Organization Exempt From Income Tax

OMB No 1545-0047

2008

Department of the Treasury
Internal Revenue Service

Under section 501(c), 527, or 4947(a)(1) of the Internal Revenue Code (except black lung benefit trust or private foundation)

The organization may have to use a copy of this return to satisfy state reporting requirements.

Open to Public Inspection

A For the 2008 calendar year, or tax year beginning **JUL 1, 2008** and ending **JUN 30, 2009**

B Check if applicable: <input type="checkbox"/> Address change <input type="checkbox"/> Name change <input checked="" type="checkbox"/> Initial return <input type="checkbox"/> Termination <input type="checkbox"/> Amended return <input type="checkbox"/> Application pending	Please use IRS label or print or type See Specific Instructions	C Name of organization ENGENUITYSC, INC.		D Employer identification number 35-2321058
		Doing Business As		E Telephone number (803) 783-1507
		Number and street (or P.O. box if mail is not delivered to street address) Room/suite P. O. BOX 50768		G Gross receipts \$ 775,744.
		City or town, state or country, and ZIP + 4 COLUMBIA, SC 29250-0768		H(a) Is this a group return for affiliates? <input type="checkbox"/> Yes <input checked="" type="checkbox"/> No H(b) Are all affiliates included? <input type="checkbox"/> Yes <input type="checkbox"/> No If "No," attach a list (see instructions) H(c) Group exemption number ▶
F Name and address of principal officer NEIL MCLEAN PO BOX 50768, COLUMBIA, SC 29250				
I Tax exempt status: <input checked="" type="checkbox"/> 501(c) (3) ◀ (insert no) <input type="checkbox"/> 4947(a)(1) or <input type="checkbox"/> 527				
J Website: ▶ ENGENUITYSC.COM				
K Type of organization: <input checked="" type="checkbox"/> Corporation <input type="checkbox"/> Trust <input type="checkbox"/> Association <input type="checkbox"/> Other ▶ L Year of formation: 2008 M State of legal domicile: SC				

Part I Summary

Activities & Governance	1 Briefly describe the organization's mission or most significant activities. DEVELOPING A PLATFORM FOR COLLABORATION BETWEEN GOVERNMENTS, EDUCATION AND THE BUSINESS
	2 Check this box <input type="checkbox"/> if the organization discontinued its operations or disposed of more than 25% of its assets.
	3 Number of voting members of the governing body (Part VI, line 1a) 3 15
	4 Number of independent voting members of the governing body (Part VI, line 1b) 4 15
	5 Total number of employees (Part V, line 2a) 5 0
	6 Total number of volunteers (estimate if necessary) 6 0
	7a Total gross unrelated business revenue from Part VIII, line 12, column (C) 7a 0.
	b Net unrelated business taxable income from Form 990-T, line 34 7b 0.

	Prior Year	Current Year
8 Contributions and grants (Part VIII, line 1h)		775,744.
9 Program service revenue (Part VIII, line 2g)		
10 Investment income (Part VIII, column (A), lines 3, 4, and 7d)		
11 Other revenue (Part VIII, column (A), lines 5, 6d, 8c, 9c, 10c, and 11e)		
12 Total revenue - add lines 8 through 11 (must equal Part VIII, column (A), line 12)		775,744.
13 Grants and similar amounts paid (Part IX, column (A), lines 1-3)		
14 Benefits paid to or for members (Part IX, column (A), line 4)		
15 Salaries, other compensation, employee benefits (Part IX, column (A), lines 5-10)		
16a Professional fundraising fees (Part IX, column (A), line 11e)		
17 Total fundraising expenses (Part IX, column (D), line 25) ▶ 5,016.		
18 Total expenses - Add lines 13-17 (must equal Part IX, column (A), line 25)		715,709.
19 Revenue less expenses. Subtract line 18 from line 12		60,035.
20 Total assets (Part X, line 16)	Beginning of Year	End of Year
21 Total liabilities (Part X, line 26)		95,645.
22 Net assets or fund balances. Subtract line 21 from line 20		35,610.
		60,035.

Part II Signature Block

Under penalties of perjury, I declare that I have examined this return, including accompanying schedules and statements, and to the best of my knowledge and belief, it is true, correct, and complete. Declaration of preparer (other than officer) is based on all information of which preparer has any knowledge.

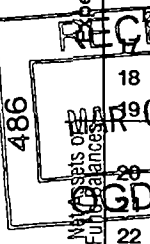
Sign Here: Neil McLean Date: 2/15/10
Signature of officer
NEIL MCLEAN, EXECUTIVE DIRECTOR
Type or print name and title

Paid Preparer's Use Only	Preparer's signature ▶ H. BENJAMIN WILLIAMS, IV	Date 02/08/10	Check if self-employed <input type="checkbox"/>	Preparer's identifying number (see instructions)
	Firm's name (or yours if self-employed), address, and ZIP + 4 ▶ ABERNETHY & COMPANY, P.C. P.O. BOX 2596 COLUMBIA, S.C. 29202	EIN ▶	Phone no. ▶	

May the IRS discuss this return with the preparer shown above? (see instructions) Yes No

SEE SCHEDULE O FOR ORGANIZATION MISSION STATEMENT CONTINUATION

SCANNED MAR 26 2010



Part III Statement of Program Service Accomplishments (see instructions)

1 Briefly describe the organization's mission:

DEVELOPING A PLATFORM FOR COLLABORATION BETWEEN GOVERNMENTS, EDUCATION AND THE BUSINESS COMMUNITY AND TARGETING PROJECTS THAT SEEK TO TRANSFORM THE REGION INTO AN AREA KNOWN FOR INNOVATION, GROWTH AND PROGRESSIVENESS.

2 Did the organization undertake any significant program services during the year which were not listed on the prior Form 990 or 990-EZ?

Yes No

If "Yes", describe these new services on Schedule O

3 Did the organization cease conducting, or make significant changes in how it conducts, any program services?

Yes No

If "Yes", describe these changes on Schedule O.

4 Describe the exempt purpose achievements for each of the organization's three largest program services by expenses.

Section 501(c)(3) and 501(c)(4) organizations and section 4947(a)(1) trusts are required to report the amount of grants and allocations to others, the total expenses, and revenue, if any, for each program service reported.

4a (Code:) (Expenses \$ 169,021. including grants of \$) (Revenue \$)

COLUMBIA TALENT MAGNET PROJECT RECOGNIZED BY THE INTERNATIONAL ECONOMIC DEVELOPMENT COUNCIL AT ITS ANNUAL "TECHNOLOGY LED ECONOMIC DEVELOPMENT" CONFERENCE IN RALEIGH, NC.

4b (Code:) (Expenses \$ 101,412. including grants of \$) (Revenue \$)

ENGENUITYSC RECOGNIZED WITH THE 2009 SOUTHERN INNOVATOR AWARD FOR THE USC-COLUMBIA FUEL CELL COLLABORATIVE - SOTHERN GROWTH POLICIES BOARD, "THE BUSINESS OF SOUTHERN ENERGY" 2009.

4c (Code:) (Expenses \$ 405,649. including grants of \$) (Revenue \$)

COLUMBIA HOSTED SOUTH CAROLINA'S FIRST MAJOR ALTERNATIVE ENERGY INDUSTRY CONFERENCE: NHA 2009 AND BROKE ATTENDANCE RECORDS.

4d Other program services (Describe in Schedule O.)

(Expenses \$ including grants of \$) (Revenue \$)

4e Total program service expenses \$ 676,082. (Must equal Part IX, Line 25, column (B))

Part IV Checklist of Required Schedules

	Yes	No
1 Is the organization described in section 501(c)(3) or 4947(a)(1) (other than a private foundation)? <i>If "Yes," complete Schedule A</i>	X	
2 Is the organization required to complete Schedule B, Schedule of Contributors?	X	
3 Did the organization engage in direct or indirect political campaign activities on behalf of or in opposition to candidates for public office? <i>If "Yes," complete Schedule C, Part I</i>		X
4 Section 501(c)(3) organizations. Did the organization engage in lobbying activities? <i>If "Yes," complete Schedule C, Part II</i>	X	
5 Section 501(c)(4), 501(c)(5), and 501(c)(6) organizations. Is the organization subject to the section 6033(e) notice and reporting requirement and proxy tax? <i>If "Yes," complete Schedule C, Part III</i>		X
6 Did the organization maintain any donor advised funds or any accounts where donors have the right to provide advice on the distribution or investment of amounts in such funds or accounts? <i>If "Yes," complete Schedule D, Part I</i>		X
7 Did the organization receive or hold a conservation easement, including easements to preserve open space, the environment, historic land areas, or historic structures? <i>If "Yes," complete Schedule D, Part II</i>		X
8 Did the organization maintain collections of works of art, historical treasures, or other similar assets? <i>If "Yes," complete Schedule D, Part III</i>		X
9 Did the organization report an amount in Part X, line 21; serve as a custodian for amounts not listed in Part X; or provide credit counseling, debt management, credit repair, or debt negotiation services? <i>If "Yes," complete Schedule D, Part IV</i>		X
10 Did the organization hold assets in term, permanent, or quasi-endowments? <i>If "Yes," complete Schedule D, Part V</i>		X
11 Did the organization report an amount in Part X, lines 10, 12, 13, 15, or 25? <i>If "Yes," complete Schedule D, Parts VI, VII, VIII, IX, or X as applicable</i>		X
12 Did the organization receive an audited financial statement for the year for which it is completing this return that was prepared in accordance with GAAP? <i>If "Yes," complete Schedule D, Parts XI, XII, and XIII</i>	X	
13 Is the organization a school as described in section 170(b)(1)(A)(ii)? <i>If "Yes," complete Schedule E</i>		X
14a Did the organization maintain an office, employees, or agents outside of the U S?		X
b Did the organization have aggregate revenues or expenses of more than \$10,000 from grantmaking, fundraising, business, and program service activities outside the U S.? <i>If "Yes," complete Schedule F, Part I</i>		X
15 Did the organization report on Part IX, column (A), line 3, more than \$5,000 of grants or assistance to any organization or entity located outside the United States? <i>If "Yes," complete Schedule F, Part II</i>		X
16 Did the organization report on Part IX, column (A), line 3, more than \$5,000 of aggregate grants or assistance to individuals located outside the United States? <i>If "Yes," complete Schedule F, Part III</i>		X
17 Did the organization report more than \$15,000 on Part IX, column (A), line 11e? <i>If "Yes," complete Schedule G, Part I</i>		X
18 Did the organization report more than \$15,000 total on Part VIII, lines 1c and 8a? <i>If "Yes," complete Schedule G, Part II</i>		X
19 Did the organization report more than \$15,000 on Part VIII, line 9a? <i>If "Yes," complete Schedule G, Part III</i>		X
20 Did the organization operate one or more hospitals? <i>If "Yes," complete Schedule H</i>		X
21 Did the organization report more than \$5,000 on Part IX, column (A), line 1? <i>If "Yes," complete Schedule I, Parts I and II</i>		X
22 Did the organization report more than \$5,000 on Part IX, column (A), line 2? <i>If "Yes," complete Schedule I, Parts I and III</i>		X
23 Did the organization answer "Yes" to Part VII, Section A, questions 3, 4, or 5? <i>If "Yes," complete Schedule J</i>		X
24a Did the organization have a tax-exempt bond issue with an outstanding principal amount of more than \$100,000 as of the last day of the year, that was issued after December 31, 2002? <i>If "Yes," answer questions 24b-24d and complete Schedule K. If "No," go to question 25</i>		X
b Did the organization invest any proceeds of tax-exempt bonds beyond a temporary period exception?		
c Did the organization maintain an escrow account other than a refunding escrow at any time during the year to defease any tax-exempt bonds?		
d Did the organization act as an "on behalf of" issuer for bonds outstanding at any time during the year?		
25a Section 501(c)(3) and 501(c)(4) organizations. Did the organization engage in an excess benefit transaction with a disqualified person during the year? <i>If "Yes," complete Schedule L, Part I</i>		X
b Did the organization become aware that it had engaged in an excess benefit transaction with a disqualified person from a prior year? <i>If "Yes," complete Schedule L, Part I</i>		X
26 Was a loan to or by a current or former officer, director, trustee, key employee, highly compensated employee, or disqualified person outstanding as of the end of the organization's tax year? <i>If "Yes," complete Schedule L, Part II</i>		X
27 Did the organization provide a grant or other assistance to an officer, director, trustee, key employee, or substantial contributor, or to a person related to such an individual? <i>If "Yes," complete Schedule L, Part III</i>		X

Part IV Checklist of Required Schedules (continued)

	Yes	No
28 During the tax year, did any person who is a current or former officer, director, trustee, or key employee		
a Have a direct business relationship with the organization (other than as an officer, director, trustee, or employee), or an indirect business relationship through ownership of more than 35% in another entity (individually or collectively with other person(s) listed in Part VII, Section A)? <i>If "Yes," complete Schedule L, Part IV</i>		X
b Have a family member who had a direct or indirect business relationship with the organization? <i>If "Yes," complete Schedule L, Part IV</i>		X
c Serve as an officer, director, trustee, key employee, partner, or member of an entity (or a shareholder of a professional corporation) doing business with the organization? <i>If "Yes," complete Schedule L, Part IV</i>		X
29 Did the organization receive more than \$25,000 in non-cash contributions? <i>If "Yes," complete Schedule M</i>		X
30 Did the organization receive contributions of art, historical treasures, or other similar assets, or qualified conservation contributions? <i>If "Yes," complete Schedule M</i>		X
31 Did the organization liquidate, terminate, or dissolve and cease operations? <i>If "Yes," complete Schedule N, Part I</i>		X
32 Did the organization sell, exchange, dispose of, or transfer more than 25% of its net assets? <i>If "Yes," complete Schedule N, Part II</i>		X
33 Did the organization own 100% of an entity disregarded as separate from the organization under Regulations sections 301.7701-2 and 301.7701-3? <i>If "Yes," complete Schedule R, Part I</i>		X
34 Was the organization related to any tax-exempt or taxable entity? <i>If "Yes," complete Schedule R, Parts II, III, IV, and V, line 1</i>		X
35 Is any related organization a controlled entity within the meaning of section 512(b)(13)? <i>If "Yes," complete Schedule R, Part V, line 2</i>		X
36 Section 501(c)(3) organizations. Did the organization make any transfers to an exempt non-charitable related organization? <i>If "Yes," complete Schedule R, Part V, line 2</i>		X
37 Did the organization conduct more than 5% of its activities through an entity that is not a related organization and that is treated as a partnership for federal income tax purposes? <i>If "Yes," complete Schedule R, Part VI</i>		X

Form 990 (2008)

Part V Statements Regarding Other IRS Filings and Tax Compliance

Table with columns for question number, description, and Yes/No responses. Includes questions 1a through 12b regarding IRS filings and tax compliance.

Part VI Governance, Management, and Disclosure (Sections A, B, and C request information about policies not required by the Internal Revenue Code.)

Section A. Governing Body and Management

For each "Yes" response to lines 2-7b below, and for a "No" response to lines 8 or 9b below, describe the circumstances, processes, or changes in Schedule O. See instructions.

Table with 3 columns: Question, Yes, No. Rows include: 1a Enter the number of voting members of the governing body (15); 1b Enter the number of voting members that are independent (15); 2 Did any officer, director, trustee, or key employee have a family relationship or a business relationship with any other officer, director, trustee, or key employee? (No); 3 Did the organization delegate control over management duties customarily performed by or under the direct supervision of officers, directors or trustees, or key employees to a management company or other person? (No); 4 Did the organization make any significant changes to its organizational documents since the prior Form 990 was filed? (No); 5 Did the organization become aware during the year of a material diversion of the organization's assets? (No); 6 Does the organization have members or stockholders? (No); 7a Does the organization have members, stockholders, or other persons who may elect one or more members of the governing body? (No); 7b Are any decisions of the governing body subject to approval by members, stockholders, or other persons? (No); 8 Did the organization contemporaneously document the meetings held or written actions undertaken during the year by the following: a The governing body? (Yes); b Each committee with authority to act on behalf of the governing body? (Yes); 9a Does the organization have local chapters, branches, or affiliates? (No); 9b If "Yes," does the organization have written policies and procedures governing the activities of such chapters, affiliates, and branches to ensure their operations are consistent with those of the organization? (No); 10 Was a copy of the Form 990 provided to the organization's governing body before it was filed? All organizations must describe in Schedule O the process, if any, the organization uses to review the Form 990 (Yes); 11 Is there any officer, director or trustee, or key employee listed in Part VII, Section A, who cannot be reached at the organization's mailing address? If "Yes," provide the names and addresses in Schedule O (No).

Section B. Policies

Table with 3 columns: Question, Yes, No. Rows include: 12a Does the organization have a written conflict of interest policy? If "No," go to line 13 (No); 12b Are officers, directors or trustees, and key employees required to disclose annually interests that could give rise to conflicts? (No); 12c Does the organization regularly and consistently monitor and enforce compliance with the policy? If "Yes," describe in Schedule O how this is done (No); 13 Does the organization have a written whistleblower policy? (No); 14 Does the organization have a written document retention and destruction policy? (No); 15 Did the process for determining compensation of the following persons include a review and approval by independent persons, comparability data, and contemporaneous substantiation of the deliberation and decision: a The organization's CEO, Executive Director, or top management official? (Yes); b Other officers or key employees of the organization? (No). Describe the process in Schedule O. (see instructions); 16a Did the organization invest in, contribute assets to, or participate in a joint venture or similar arrangement with a taxable entity during the year? (No); 16b If "Yes," has the organization adopted a written policy or procedure requiring the organization to evaluate its participation in joint venture arrangements under applicable federal tax law, and taken steps to safeguard the organization's exempt status with respect to such arrangements? (No).

Section C. Disclosure

- 17 List the states with which a copy of this Form 990 is required to be filed SC
18 Section 6104 requires an organization to make its Forms 1023 (or 1024 if applicable), 990, and 990-T (501(c)(3)s only) available for public inspection. Indicate how you make these available. Check all that apply.
[] Own website [] Another's website [X] Upon request
19 Describe in Schedule O whether (and if so, how), the organization makes its governing documents, conflict of interest policy, and financial statements available to the public.
20 State the name, physical address, and telephone number of the person who possesses the books and records of the organization:
NEIL MCLEAN - (803)-783-1507
COLUMBIA, SC 29250

Part VIII		Statement of Revenue		(A) Total revenue	(B) Related or exempt function revenue	(C) Unrelated business revenue	(D) Revenue excluded from tax under sections 512, 513, or 514
Contributions, gifts, grants and other similar amounts	1 a Federated campaigns	1a					
	b Membership dues	1b					
	c Fundraising events	1c					
	d Related organizations	1d					
	e Government grants (contributions)	1e	296,658.				
	f All other contributions, gifts, grants, and similar amounts not included above	1f	479,086.				
	g Noncash contributions included in lines 1a-1f \$						
	h Total. Add lines 1a-1f			775,744.			
Program Service Revenue			Business Code				
	2 a						
	b						
	c						
	d						
	e						
	f All other program service revenue						
g Total. Add lines 2a-2f							
Other Revenue	3 Investment income (including dividends, interest, and other similar amounts)						
	4 Income from investment of tax-exempt bond proceeds						
	5 Royalties						
	6 a Gross Rents	(i) Real	(ii) Personal				
		b Less: rental expenses					
		c Rental income or (loss)					
		d Net rental income or (loss)					
	7 a Gross amount from sales of assets other than inventory	(i) Securities	(ii) Other				
		b Less: cost or other basis and sales expenses					
		c Gain or (loss)					
		d Net gain or (loss)					
	8 a Gross income from fundraising events (not including \$ _____ of contributions reported on line 1c). See Part IV, line 18	a					
		b Less: direct expenses	b				
		c Net income or (loss) from fundraising events					
	9 a Gross income from gaming activities. See Part IV, line 19	a					
b Less: direct expenses		b					
c Net income or (loss) from gaming activities							
10 a Gross sales of inventory, less returns and allowances	a						
	b Less: cost of goods sold	b					
	c Net income or (loss) from sales of inventory						
Miscellaneous Revenue		Business Code					
11 a	a						
	b						
	c						
	d All other revenue						
	e Total. Add lines 11a-11d						
12 Total Revenue. Add lines 1h, 2g, 3, 4, 5, 6d, 7d, 8c, 9c, 10c, and 11e			775,744.	0.	0.	0.	

Part IX Statement of Functional Expenses

Section 501(c)(3) and 501(c)(4) organizations must complete all columns.
All other organizations must complete column (A) but are not required to complete columns (B), (C), and (D).

Do not include amounts reported on lines 6b, 7b, 8b, 9b, and 10b of Part VIII.	(A) Total expenses	(B) Program service expenses	(C) Management and general expenses	(D) Fundraising expenses
1 Grants and other assistance to governments and organizations in the U.S. See Part IV, line 21				
2 Grants and other assistance to individuals in the U.S. See Part IV, line 22				
3 Grants and other assistance to governments, organizations, and individuals outside the U.S. See Part IV, lines 15 and 16				
4 Benefits paid to or for members				
5 Compensation of current officers, directors, trustees, and key employees				
6 Compensation not included above, to disqualified persons (as defined under section 4958(f)(1)) and persons described in section 4958(c)(3)(B)				
7 Other salaries and wages				
8 Pension plan contributions (include section 401(k) and section 403(b) employer contributions)				
9 Other employee benefits				
10 Payroll taxes				
11 Fees for services (non-employees):				
a Management	100,328.	83,272.	12,040.	5,016.
b Legal				
c Accounting	4,779.		4,779.	
d Lobbying				
e Professional fundraising services. See Part IV, line 17				
f Investment management fees				
g Other				
12 Advertising and promotion	533.		533.	
13 Office expenses	5,313.		5,313.	
14 Information technology	5,361.		5,361.	
15 Royalties				
16 Occupancy				
17 Travel	7,608.	7,608.		
18 Payments of travel or entertainment expenses for any federal, state, or local public officials				
19 Conferences, conventions, and meetings				
20 Interest				
21 Payments to affiliates				
22 Depreciation, depletion, and amortization				
23 Insurance				
24 Other expenses. Itemize expenses not covered above. (Expenses grouped together and labeled miscellaneous may not exceed 5% of total expenses shown on line 25 below.)				
a SPECIAL PROJECTS	524,160.	524,160.		
b OUTSIDE SERVICES	47,109.	47,109.		
c MARKETING & BRANDING SE	13,933.	13,933.		
d DUES & SUBSCRIPTIONS	1,774.		1,774.	
e BAD DEBT	1,750.		1,750.	
f All other expenses	3,061.		3,061.	
25 Total functional expenses. Add lines 1 through 24f	715,709.	676,082.	34,611.	5,016.
26 Joint Costs. Check here <input type="checkbox"/> if following SOP 98-2. Complete this line only if the organization reported in column (B) joint costs from a combined educational campaign and fundraising solicitation				

Part X Balance Sheet

		(A) Beginning of year	(B) End of year
Assets	1 Cash - non-interest-bearing	1	<39,354.>
	2 Savings and temporary cash investments	2	
	3 Pledges and grants receivable, net	3	
	4 Accounts receivable, net	4	134,999.
	5 Receivables from current and former officers, directors, trustees, key employees, or other related parties. Complete Part II of Schedule L	5	
	6 Receivables from other disqualified persons (as defined under section 4958(f)(1)) and persons described in section 4958(c)(3)(B) Complete Part II of Schedule L	6	
	7 Notes and loans receivable, net	7	
	8 Inventories for sale or use	8	
	9 Prepaid expenses and deferred charges	9	
	10a Land, buildings, and equipment cost basis	10a	
	b Less: accumulated depreciation. Complete Part VI of Schedule D	10b	10c
	11 Investments - publicly traded securities	11	
	12 Investments - other securities See Part IV, line 11	12	
	13 Investments - program-related See Part IV, line 11	13	
	14 Intangible assets	14	
	15 Other assets See Part IV, line 11	15	
16 Total assets. Add lines 1 through 15 (must equal line 34)	0. 16	95,645.	
Liabilities	17 Accounts payable and accrued expenses	17	35,610.
	18 Grants payable	18	
	19 Deferred revenue	19	
	20 Tax-exempt bond liabilities	20	
	21 Escrow account liability. Complete Part IV of Schedule D	21	
	22 Payables to current and former officers, directors, trustees, key employees, highest compensated employees, and disqualified persons Complete Part II of Schedule L	22	
	23 Secured mortgages and notes payable to unrelated third parties	23	
	24 Unsecured notes and loans payable	24	
	25 Other liabilities. Complete Part X of Schedule D	25	
	26 Total liabilities. Add lines 17 through 25	0. 26	35,610.
Net Assets or Fund Balances	Organizations that follow SFAS 117, check here <input checked="" type="checkbox"/> and complete lines 27 through 29, and lines 33 and 34.		
	27 Unrestricted net assets	27	60,035.
	28 Temporarily restricted net assets	28	
	29 Permanently restricted net assets	29	
	Organizations that do not follow SFAS 117, check here <input type="checkbox"/> and complete lines 30 through 34.		
	30 Capital stock or trust principal, or current funds	30	
	31 Paid-in or capital surplus, or land, building, or equipment fund	31	
	32 Retained earnings, endowment, accumulated income, or other funds	32	
33 Total net assets or fund balances	0. 33	60,035.	
34 Total liabilities and net assets/fund balances	0. 34	95,645.	

Part XI Financial Statements and Reporting

	Yes	No
1 Accounting method used to prepare the Form 990: <input type="checkbox"/> Cash <input checked="" type="checkbox"/> Accrual <input type="checkbox"/> Other		
2a Were the organization's financial statements compiled or reviewed by an independent accountant?		X
b Were the organization's financial statements audited by an independent accountant?	X	
c If "Yes" to lines 2a or 2b, does the organization have a committee that assumes responsibility for oversight of the audit, review, or compilation of its financial statements and selection of an independent accountant?		X
3a As a result of a federal award, was the organization required to undergo an audit or audits as set forth in the Single Audit Act and OMB Circular A-133?		X
b If "Yes," did the organization undergo the required audit or audits?		

Part II Support Schedule for Organizations Described in Sections 170(b)(1)(A)(iv) and 170(b)(1)(A)(vi)

(Complete only if you checked the box on line 5, 7, or 8 of Part I.)

Section A. Public Support

Calendar year (or fiscal year beginning in)▶	(a) 2004	(b) 2005	(c) 2006	(d) 2007	(e) 2008	(f) Total
1 Gifts, grants, contributions, and membership fees received. (Do not include any "unusual grants")					775,743.	775,743.
2 Tax revenues levied for the organization's benefit and either paid to or expended on its behalf						
3 The value of services or facilities furnished by a governmental unit to the organization without charge						
4 Total. Add lines 1 - 3					775,743.	775,743.
5 The portion of total contributions by each person (other than a governmental unit or publicly supported organization) included on line 1 that exceeds 2% of the amount shown on line 11, column (f)						
6 Public support. Subtract line 5 from line 4						775,743.

Section B. Total Support

Calendar year (or fiscal year beginning in)▶	(a) 2004	(b) 2005	(c) 2006	(d) 2007	(e) 2008	(f) Total
7 Amounts from line 4					775,743.	775,743.
8 Gross income from interest, dividends, payments received on securities loans, rents, royalties and income from similar sources						
9 Net income from unrelated business activities, whether or not the business is regularly carried on						
10 Other income. Do not include gain or loss from the sale of capital assets (Explain in Part IV.)						
11 Total support. Add lines 7 through 10						775,743.

12 Gross receipts from related activities, etc. (see instructions) 12

13 First five years. If the Form 990 is for the organization's first, second, third, fourth, or fifth tax year as a section 501(c)(3) organization, check this box and stop here

Section C. Computation of Public Support Percentage

14 Public support percentage for 2008 (line 6, column (f) divided by line 11, column (f))	14	%
15 Public support percentage from 2007 Schedule A, Part IV-A, line 26f	15	%
16a 33 1/3% support test - 2008. If the organization did not check the box on line 13, and line 14 is 33 1/3% or more, check this box and stop here. The organization qualifies as a publicly supported organization <input type="checkbox"/>		
b 33 1/3% support test - 2007. If the organization did not check a box on line 13 or 16a, and line 15 is 33 1/3% or more, check this box and stop here. The organization qualifies as a publicly supported organization <input type="checkbox"/>		
17a 10% -facts-and-circumstances test - 2008. If the organization did not check a box on line 13, 16a, or 16b, and line 14 is 10% or more, and if the organization meets the "facts-and-circumstances" test, check this box and stop here. Explain in Part IV how the organization meets the "facts-and-circumstances" test. The organization qualifies as a publicly supported organization <input type="checkbox"/>		
b 10% -facts-and-circumstances test - 2007. If the organization did not check a box on line 13, 16a, 16b, or 17a, and line 15 is 10% or more, and if the organization meets the "facts-and-circumstances" test, check this box and stop here. Explain in Part IV how the organization meets the "facts-and-circumstances" test. The organization qualifies as a publicly supported organization <input type="checkbox"/>		
18 Private foundation. If the organization did not check a box on line 13, 16a, 16b, 17a, or 17b, check this box and see instructions <input type="checkbox"/>		

Part III Support Schedule for Organizations Described in Section 509(a)(2) (Complete only if you checked the box on line 9 of Part I.)

Section A. Public Support

Calendar year (or fiscal year beginning in) ▶	(a) 2004	(b) 2005	(c) 2006	(d) 2007	(e) 2008	(f) Total
1 Gifts, grants, contributions, and membership fees received (Do not include any "unusual grants.")						
2 Gross receipts from admissions, merchandise sold or services performed, or facilities furnished in any activity that is related to the organization's tax exempt purpose						
3 Gross receipts from activities that are not an unrelated trade or business under section 513						
4 Tax revenues levied for the organization's benefit and either paid to or expended on its behalf						
5 The value of services or facilities furnished by a governmental unit to the organization without charge						
6 Total. Add lines 1 - 5						
7a Amounts included on lines 1, 2, and 3 received from disqualified persons						
b Amounts included on lines 2 and 3 received from other than disqualified persons that exceed the greater of 1% of the total of lines 9, 10c, 11, and 12 for the year or \$5,000						
c Add lines 7a and 7b						
8 Public support (Subtract line 7c from line 6)						

Section B. Total Support

Calendar year (or fiscal year beginning in) ▶	(a) 2004	(b) 2005	(c) 2006	(d) 2007	(e) 2008	(f) Total
9 Amounts from line 6						
10a Gross income from interest, dividends, payments received on securities loans, rents, royalties and income from similar sources						
b Unrelated business taxable income (less section 511 taxes) from businesses acquired after June 30, 1975						
c Add lines 10a and 10b						
11 Net income from unrelated business activities not included in line 10b, whether or not the business is regularly carried on						
12 Other income. Do not include gain or loss from the sale of capital assets (Explain in Part IV)						
13 Total support (Add lines 9, 10c, 11, and 12)						

14 First five years. If the Form 990 is for the organization's first, second, third, fourth, or fifth tax year as a section 501(c)(3) organization, check this box and stop here

Section C. Computation of Public Support Percentage

15 Public support percentage for 2008 (line 8, column (f) divided by line 13, column (f))	15	%
16 Public support percentage from 2007 Schedule A, Part IV-A, line 27g	16	%

Section D. Computation of Investment Income Percentage

17 Investment income percentage for 2008 (line 10c, column (f) divided by line 13, column (f))	17	%
18 Investment income percentage from 2007 Schedule A, Part IV-A, line 27h	18	%

19a 33 1/3% support tests - 2008. If the organization did not check the box on line 14, and line 15 is more than 33 1/3%, and line 17 is not more than 33 1/3%, check this box and stop here. The organization qualifies as a publicly supported organization

b 33 1/3% support tests - 2007. If the organization did not check a box on line 14 or line 19a, and line 16 is more than 33 1/3%, and line 18 is not more than 33 1/3%, check this box and stop here. The organization qualifies as a publicly supported organization

20 Private foundation. If the organization did not check a box on line 14, 19a, or 19b, check this box and see instructions

SCHEDULE C
(Form 990 or 990-EZ)

Political Campaign and Lobbying Activities

OMB No 1545-0047

For Organizations Exempt From Income Tax Under section 501(c) and section 527

2008
Open to Public
Inspection

Department of the Treasury
Internal Revenue Service

▶ To be completed by organizations described below.
▶ Attach to Form 990 or Form 990-EZ.

If the organization answered "Yes," to Form 990, Part IV, line 3, or Form 990-EZ, Part VI, line 46 (Political Campaign Activities), then

- Section 501(c)(3) organizations. Complete Parts I-A and B. Do not complete Part I-C.
- Section 501(c) (other than section 501(c)(3)) organizations: Complete Parts I-A and C below. Do not complete Part I-B.
- Section 527 organizations: Complete Part I-A only.

If the organization answered "Yes," to Form 990, Part IV, line 4, or Form 990-EZ, Part VI, line 47 (Lobbying Activities), then

- Section 501(c)(3) organizations that have filed Form 5768 (election under section 501(h)): Complete Part II-A. Do not complete Part II-B.
- Section 501(c)(3) organizations that have NOT filed Form 5768 (election under section 501(h)): Complete Part II-B. Do not complete Part II-A.

If the organization answered "Yes," to Form 990, Part IV, line 5 (Proxy Tax), then

- Section 501(c)(4), (5), or (6) organizations. Complete Part III.

Name of organization **ENGENUITYSC, INC.** Employer identification number **35-2321058**

Part I-A To be completed by all organizations exempt under section 501(c) and section 527 organizations.

See the instructions for Schedule C for details.

- 1 Provide a description of the organization's direct and indirect political campaign activities in Part IV
- 2 Political expenditures ▶ \$ _____
- 3 Volunteer hours _____

Part I-B To be completed by all organizations exempt under section 501(c)(3).

See the instructions for Schedule C for details.

- 1 Enter the amount of any excise tax incurred by the organization under section 4955 ▶ \$ _____
- 2 Enter the amount of any excise tax incurred by organization managers under section 4955 ▶ \$ _____
- 3 If the organization incurred a section 4955 tax, did it file Form 4720 for this year? Yes No
- 4a Was a correction made? Yes No
- b If "Yes," describe in Part IV

Part I-C To be completed by all organizations exempt under section 501(c), except section 501(c)(3).

See the instructions for Schedule C for details.

- 1 Enter the amount directly expended by the filing organization for section 527 exempt function activities ▶ \$ _____
- 2 Enter the amount of the filing organization's funds contributed to other organizations for section 527 exempt function activities ▶ \$ _____
- 3 Total of direct and indirect exempt function expenditures. Add lines 1 and 2 and enter here and on Form 1120-POL, line 17b ▶ \$ _____
- 4 Did the filing organization file Form 1120-POL for this year? Yes No
- 5 State the names, addresses and employer identification number (EIN) of all section 527 political organizations to which payments were made. Enter the amount paid and indicate if the amount was paid from the filing organization's funds or were political contributions received and promptly and directly delivered to a separate political organization, such as a separate segregated fund or a political action committee (PAC). If additional space is needed, provide information in Part IV.

(a) Name	(b) Address	(c) EIN	(d) Amount paid from filing organization's funds. If none, enter -0-	(e) Amount of political contributions received and promptly and directly delivered to a separate political organization. If none, enter -0-

Part II-A To be completed by organizations exempt under section 501(c)(3) that filed Form 5768 (election under section 501(h)). See the instructions for Schedule C for details.

- A Check if the filing organization belongs to an affiliated group.
 B Check if the filing organization checked box A and "limited control" provisions apply.

Limits on Lobbying Expenditures (The term "expenditures" means amounts paid or incurred.)	(a) Filing organization's totals	(b) Affiliated group totals												
1a Total lobbying expenditures to influence public opinion (grassroots lobbying)														
b Total lobbying expenditures to influence a legislative body (direct lobbying)														
c Total lobbying expenditures (add lines 1a and 1b)														
d Other exempt purpose expenditures														
e Total exempt purpose expenditures (add lines 1c and 1d)														
f Lobbying nontaxable amount. Enter the amount from the following table in both columns.														
<table border="1" style="width: 100%;"> <thead> <tr> <th style="text-align: left;">If the amount on line 1e, column (a) or (b) is:</th> <th style="text-align: left;">The lobbying nontaxable amount is:</th> </tr> </thead> <tbody> <tr> <td>Not over \$500,000</td> <td>20% of the amount on line 1e</td> </tr> <tr> <td>Over \$500,000 but not over \$1,000,000</td> <td>\$100,000 plus 15% of the excess over \$500,000.</td> </tr> <tr> <td>Over \$1,000,000 but not over \$1,500,000</td> <td>\$175,000 plus 10% of the excess over \$1,000,000.</td> </tr> <tr> <td>Over \$1,500,000 but not over \$17,000,000</td> <td>\$225,000 plus 5% of the excess over \$1,500,000.</td> </tr> <tr> <td>Over \$17,000,000</td> <td>\$1,000,000.</td> </tr> </tbody> </table>	If the amount on line 1e, column (a) or (b) is:	The lobbying nontaxable amount is:	Not over \$500,000	20% of the amount on line 1e	Over \$500,000 but not over \$1,000,000	\$100,000 plus 15% of the excess over \$500,000.	Over \$1,000,000 but not over \$1,500,000	\$175,000 plus 10% of the excess over \$1,000,000.	Over \$1,500,000 but not over \$17,000,000	\$225,000 plus 5% of the excess over \$1,500,000.	Over \$17,000,000	\$1,000,000.		
If the amount on line 1e, column (a) or (b) is:	The lobbying nontaxable amount is:													
Not over \$500,000	20% of the amount on line 1e													
Over \$500,000 but not over \$1,000,000	\$100,000 plus 15% of the excess over \$500,000.													
Over \$1,000,000 but not over \$1,500,000	\$175,000 plus 10% of the excess over \$1,000,000.													
Over \$1,500,000 but not over \$17,000,000	\$225,000 plus 5% of the excess over \$1,500,000.													
Over \$17,000,000	\$1,000,000.													
g Grassroots nontaxable amount (enter 25% of line 1f)														
h Subtract line 1g from line 1a. Enter -0- if line g is more than line a														
i Subtract line 1f from line 1c. Enter -0- if line f is more than line c														
j If there is an amount other than zero on either line 1h or line 1i, did the organization file Form 4720 reporting section 4911 tax for this year?	<input type="checkbox"/> Yes	<input type="checkbox"/> No												

4-Year Averaging Period Under Section 501(h)
 (Some organizations that made a section 501(h) election do not have to complete all of the five columns below. See the instructions for lines 2a through 2f of the instructions.)

Lobbying Expenditures During 4-Year Averaging Period					
Calendar year (or fiscal year beginning in)	(a) 2005	(b) 2006	(c) 2007	(d) 2008	(e) Total
2a Lobbying non-taxable amount					
b Lobbying ceiling amount (150% of line 2a, column(e))					
c Total lobbying expenditures				0.	
d Grassroots non-taxable amount					
e Grassroots ceiling amount (150% of line 2d, column (e))					
f Grassroots lobbying expenditures					

Part II-B To be completed by organizations exempt under section 501(c)(3) that have NOT filed Form 5768 (election under section 501(h)). See the instructions for Schedule C for details.

	(a)		(b)
	Yes	No	Amount
1 During the year, did the filing organization attempt to influence foreign, national, state or local legislation, including any attempt to influence public opinion on a legislative matter or referendum, through the use of:			
a Volunteers?		X	
b Paid staff or management (include compensation in expenses reported on lines 1c through 1j)?	X		
c Media advertisements?		X	
d Mailings to members, legislators, or the public?		X	
e Publications, or published or broadcast statements?		X	
f Grants to other organizations for lobbying purposes?		X	
g Direct contact with legislators, their staffs, government officials, or a legislative body?	X		16,000.
h Rallies, demonstrations, seminars, conventions, speeches, lectures, or any other means?		X	
i Other activities? If "Yes," describe in Part IV		X	
j Total lines 1c through 1i			16,000.
2a Did the activities in line 1 cause the organization to be not described in section 501(c)(3)?		X	
b If "Yes," enter the amount of any tax incurred under section 4912			
c If "Yes," enter the amount of any tax incurred by organization managers under section 4912			
d If the filing organization incurred a section 4912 tax, did it file Form 4720 for this year?			

Part III-A To be completed by all organizations exempt under section 501(c)(4), section 501(c)(5), or section 501(c)(6). See the instructions for Schedule C for details.

	Yes	No
1 Were substantially all (90% or more) dues received nondeductible by members?		
2 Did the organization make only in-house lobbying expenditures of \$2,000 or less?		
3 Did the organization agree to carryover lobbying and political expenditures from the prior year?		

Part III-B To be completed by all organizations exempt under section 501(c)(4), section 501(c)(5), or section 501(c)(6) if BOTH Part III-A, questions 1 and 2 are answered "No" OR if Part III-A, question 3 is answered "Yes." See Schedule C instructions for details.

1 Dues, assessments and similar amounts from members	1	
2 Section 162(e) non-deductible lobbying and political expenditures (do not include amounts of political expenses for which the section 527(f) tax was paid).		
a Current year	2a	
b Carryover from last year	2b	
c Total	2c	
3 Aggregate amount reported in section 6033(e)(1)(A) notices of nondeductible section 162(e) dues	3	
4 If notices were sent and the amount on line 2c exceeds the amount on line 3, what portion of the excess does the organization agree to carryover to the reasonable estimate of nondeductible lobbying and political expenditure next year?	4	
5 Taxable amount of lobbying and political expenditures (line 2c total minus 3 and 4)	5	

Part IV Supplemental Information

Complete this part to provide the descriptions required for Part I-A, line 1; Part I-B, line 4; Part I-C, line 5, and Part II-B, line 1i. Also, complete this part for any additional information.

Schedule D
(Form 990)

Department of the Treasury
Internal Revenue Service

Supplemental Financial Statements

▶ Attach to Form 990. To be completed by organizations that answered "Yes," to Form 990, Part IV, line 6, 7, 8, 9, 10, 11, or 12.

OMB No 1545-0047

2008

Open to Public Inspection

Name of the organization **ENGENUITYSC, INC.** Employer identification number **35-2321058**

Part I Organizations Maintaining Donor Advised Funds or Other Similar Funds or Accounts. Complete if the organization answered "Yes" to Form 990, Part IV, line 6.

	(a) Donor advised funds	(b) Funds and other accounts
1 Total number at end of year		
2 Aggregate contributions to (during year)		
3 Aggregate grants from (during year)		
4 Aggregate value at end of year		
5 Did the organization inform all donors and donor advisors in writing that the assets held in donor advised funds are the organization's property, subject to the organization's exclusive legal control?		<input type="checkbox"/> Yes <input type="checkbox"/> No
6 Did the organization inform all grantees, donors, and donor advisors in writing that grant funds may be used only for charitable purposes and not for the benefit of the donor or donor advisor or other impermissible private benefit?		<input type="checkbox"/> Yes <input type="checkbox"/> No

Part II Conservation Easements. Complete if the organization answered "Yes" to Form 990, Part IV, line 7.

- Purpose(s) of conservation easements held by the organization (check all that apply).

<input type="checkbox"/> Preservation of land for public use (e.g., recreation or pleasure)	<input type="checkbox"/> Preservation of an historically important land area
<input type="checkbox"/> Protection of natural habitat	<input type="checkbox"/> Preservation of certified historic structure
<input type="checkbox"/> Preservation of open space	
- Complete lines 2a-2d if the organization held a qualified conservation contribution in the form of a conservation easement on the last day of the tax year

	Held at the End of the Year
a Total number of conservation easements	2a
b Total acreage restricted by conservation easements	2b
c Number of conservation easements on a certified historic structure included in (a)	2c
d Number of conservation easements included in (c) acquired after 8/17/06	2d
- Number of conservation easements modified, transferred, released, extinguished, or terminated by the organization during the taxable year ▶ _____
- Number of states where property subject to conservation easement is located ▶ _____
- Does the organization have a written policy regarding the periodic monitoring, inspection, violations, and enforcement of the conservation easements it holds? Yes No
- Staff or volunteer hours devoted to monitoring, inspecting, and enforcing easements during the year ▶ _____
- Amount of expenses incurred in monitoring, inspecting, and enforcing easements during the year ▶ \$ _____
- Does each conservation easement reported on line 2(d) above satisfy the requirements of section 170(h)(4)(B)(i) and section 170(h)(4)(B)(ii)? Yes No
- In Part XIV, describe how the organization reports conservation easements in its revenue and expense statement, and balance sheet, and include, if applicable, the text of the footnote to the organization's financial statements that describes the organization's accounting for conservation easements.

Part III Organizations Maintaining Collections of Art, Historical Treasures, or Other Similar Assets. Complete if the organization answered "Yes" to Form 990, Part IV, line 8

- If the organization elected, as permitted under SFAS 116, not to report in its revenue statement and balance sheet works of art, historical treasures, or other similar assets held for public exhibition, education, or research in furtherance of public service, provide, in Part XIV, the text of the footnote to its financial statements that describes these items.
- If the organization elected, as permitted under SFAS 116, to report in its revenue statement and balance sheet works of art, historical treasures, or other similar assets held for public exhibition, education, or research in furtherance of public service, provide the following amounts relating to these items:

(i) Revenues included in Form 990, Part VIII, line 1	▶ \$ _____
(ii) Assets included in Form 990, Part X	▶ \$ _____
- If the organization received or held works of art, historical treasures, or other similar assets for financial gain, provide the following amounts required to be reported under SFAS 116 relating to these items:

a Revenues included in Form 990, Part VIII, line 1	▶ \$ _____
b Assets included in Form 990, Part X	▶ \$ _____

Part III Organizations Maintaining Collections of Art, Historical Treasures, or Other Similar Assets (continued)

- 3 Using the organization's accession and other records, check any of the following that are a significant use of its collection items (check all that apply):
- a Public exhibition
 - b Scholarly research
 - c Preservation for future generations
 - d Loan or exchange programs
 - e Other _____
- 4 Provide a description of the organization's collections and explain how they further the organization's exempt purpose in Part XIV.
- 5 During the year, did the organization solicit or receive donations of art, historical treasures, or other similar assets to be sold to raise funds rather than to be maintained as part of the organization's collection? Yes No

Part IV Trust, Escrow and Custodial Arrangements. Complete if organization answered "Yes" to Form 990, Part IV, line 9, or reported an amount on Form 990, Part X, line 21

- 1a Is the organization an agent, trustee, custodian or other intermediary for contributions or other assets not included on Form 990, Part X? Yes No
- b If "Yes," explain the arrangement in Part XIV and complete the following table:
- | | Amount |
|---------------------------------|--------|
| c Beginning balance | |
| d Additions during the year | |
| e Distributions during the year | |
| f Ending balance | |
- 2a Did the organization include an amount on Form 990, Part X, line 21? Yes No
- b If "Yes," explain the arrangement in Part XIV.

Part V Endowment Funds. Complete if organization answered "Yes" to Form 990, Part IV, line 10.

	(a) Current year	(b) Prior year	(c) Two years back	(d) Three years back	(e) Four years back
1a Beginning of year balance					
b Contributions					
c Investment earnings or losses					
d Grants or scholarships					
e Other expenditures for facilities and programs					
f Administrative expenses					
g End of year balance					

2 Provide the estimated percentage of the year end balance held as:

- a Board designated or quasi-endowment _____ %
- b Permanent endowment _____ %
- c Term endowment _____ %

3a Are there endowment funds not in the possession of the organization that are held and administered for the organization by

	Yes	No
(i) unrelated organizations		
(ii) related organizations		

b If "Yes" to 3a(ii), are the related organizations listed as required on Schedule R? Yes No

4 Describe in Part XIV the intended uses of the organization's endowment funds.

Part VI Investments - Land, Buildings, and Equipment. See Form 990, Part X, line 10.

Description of investment	(a) Cost or other basis (investment)	(b) Cost or other basis (other)	(c) Depreciation	(d) Book value
1a Land				
b Buildings				
c Leasehold improvements				
d Equipment				
e Other				

Total. Add lines 1a-1e. (Column (d) should equal Form 990, Part X, column (B), line 10(c).) 0.

Part XI Reconciliation of Change in Net Assets from Form 990 to Financial Statements

1	Total revenue (Form 990, Part VIII, column (A), line 12)	1	775,744.
2	Total expenses (Form 990, Part IX, column (A), line 25)	2	715,709.
3	Excess or (deficit) for the year. Subtract line 2 from line 1	3	60,035.
4	Net unrealized gains (losses) on investments	4	
5	Donated services and use of facilities	5	
6	Investment expenses	6	
7	Prior period adjustments	7	
8	Other (Describe in Part XIV)	8	
9	Total adjustments (net). Add lines 4-8	9	0.
10	Excess or (deficit) for the year per financial statements. Combine lines 3 and 9	10	60,035.

Part XII Reconciliation of Revenue per Audited Financial Statements With Revenue per Return

1	Total revenue, gains, and other support per audited financial statements	1	775,744.
2	Amounts included on line 1 but not on Form 990, Part VIII, line 12:		
a	Net unrealized gains on investments	2a	
b	Donated services and use of facilities	2b	
c	Recoveries of prior year grants	2c	
d	Other (Describe in Part XIV)	2d	
e	Add lines 2a through 2d	2e	0.
3	Subtract line 2e from line 1	3	775,744.
4	Amounts included on Form 990, Part VIII, line 12, but not on line 1:		
a	Investment expenses not included on Form 990, Part VIII, line 7b	4a	
b	Other (Describe in Part XIV)	4b	
c	Add lines 4a and 4b	4c	0.
5	Total revenue. Add lines 3 and 4c. (This should equal Form 990, Part I, line 12.)	5	775,744.

Part XIII Reconciliation of Expenses per Audited Financial Statements With Expenses per Return

1	Total expenses and losses per audited financial statements	1	715,709.
2	Amounts included on line 1 but not on Form 990, Part IX, line 25:		
a	Donated services and use of facilities	2a	
b	Prior year adjustments	2b	
c	Losses reported on Form 990, Part IX, line 25	2c	
d	Other (Describe in Part XIV)	2d	
e	Add lines 2a through 2d	2e	0.
3	Subtract line 2e from line 1	3	715,709.
4	Amounts included on Form 990, Part IX, line 25, but not on line 1:		
a	Investment expenses not included on Form 990, Part VIII, line 7b	4a	
b	Other (Describe in Part XIV)	4b	
c	Add lines 4a and 4b	4c	0.
5	Total expenses. Add lines 3 and 4c. (This should equal Form 990, Part I, line 18.)	5	715,709.

Part XIV Supplemental Information

Complete this part to provide the descriptions required for Part II, lines 3, 5, and 9; Part III, lines 1a and 4; Part IV, lines 1b and 2b; Part V, line 4; Part X; Part XI, line 8; Part XII, lines 2d and 4b; and Part XIII, lines 2d and 4b.

SCHEDULE O
(Form 990)

Department of the Treasury
Internal Revenue Service

Supplemental Information to Form 990

▶ Attach to Form 990. To be completed by organizations to provide additional information for responses to specific questions for the Form 990 or to provide any additional information.

OMB No 1545-0047

2008

Open to Public
Inspection

Name of the organization

ENGENUITYSC, INC.

Employer identification number

35-2321058

FORM 990, PART I, LINE 1, DESCRIPTION OF ORGANIZATION MISSION:

COMMUNITY AND TARGETING PROJECTS THAT SEEK TO TRANSFORM THE REGION INTO AN AREA KNOWN FOR INNOVATION, GROWTH AND PROGRESSIVENESS

FORM 990, PART III, LINE 4D, OTHER PROGRAM SERVICES:

MARKETING COLUMBIA'S ENTREPRENEURIAL ECOSYSTEM AND INNOVATION PIPELINE. DEVELOPED AND LAUNCHED COLUMBIA'S INNOVATION INDEX. PRESENTED AT FUEL CELL & INNOVATION TRADE SHOWS IN THE US AND EUROPE. DEVELOPED MARKETING MATERIALS FOR REGIONS FUEL CELL ASSETS.

FORM 990, PART VI, SECTION A, LINE 10: PRESENTED AND DISCUSSED AT A BOARD OF DIRECTORS MEETING.

FORM 990, PART VI, SECTION B, LINE 15: THE BOARD OF DIRECTORS MEETS AND APPROVES THE CONTRACT AND COMPENSATION OF THE MANAGEMENT SERVICES ORGANIZATION WHO THE EXECUTIVE DIRECTOR WORKS FOR. THE BOARD RELIES ON THEIR EXPERIENCE WITH COMPARABLE COMPENSATION TO MAKE THEIR DECISION. DISCUSSIONS RELATED TO THESE MATTERS ARE RECORDED IN THE BOARD MINUTES.

FORM 990, PART VI, SECTION C, LINE 19: AVAILABLE ON REQUEST.

Application for Extension of Time To File an Exempt Organization Return

► **File a separate application for each return.**

- If you are filing for an **Automatic 3-Month Extension**, complete only **Part I** and check this box
- If you are filing for an **Additional (Not Automatic) 3-Month Extension**, complete only **Part II** (on page 2 of this form).

Do not complete **Part II** unless you have already been granted an automatic 3-month extension on a previously filed Form 8868.

Part I Automatic 3-Month Extension of Time. Only submit original (no copies needed).

A corporation required to file Form 990-T and requesting an automatic 6-month extension - check this box and complete Part I only

All other corporations (including 1120-C filers), partnerships, REMICs, and trusts must use Form 7004 to request an extension of time to file income tax returns.

Electronic Filing (e-file). Generally, you can electronically file Form 8868 if you want a 3-month automatic extension of time to file one of the returns noted below (6 months for a corporation required to file Form 990-T). However, you cannot file Form 8868 electronically if (1) you want the additional (not automatic) 3-month extension or (2) you file Forms 990-BL, 6069, or 8870, group returns, or a composite or consolidated Form 990-T. Instead, you must submit the fully completed and signed page 2 (Part II) of Form 8868. For more details on the electronic filing of this form, visit www.irs.gov/efile and click on e-file for Charities & Nonprofits.

Type or print File by the due date for filing your return. See instructions	Name of Exempt Organization ENGENUITYSC, INC.	Employer identification number 35-2321058
	Number, street, and room or suite no. If a P O box, see instructions. P. O. BOX 50768	
	City, town or post office, state, and ZIP code For a foreign address, see instructions COLUMBIA, SC 29250-0768	

Check type of return to be filed (file a separate application for each return):

- | | | |
|--|--|------------------------------------|
| <input checked="" type="checkbox"/> Form 990 | <input type="checkbox"/> Form 990-T (corporation) | <input type="checkbox"/> Form 4720 |
| <input type="checkbox"/> Form 990-BL | <input type="checkbox"/> Form 990-T (sec 401(a) or 408(a) trust) | <input type="checkbox"/> Form 5227 |
| <input type="checkbox"/> Form 990 EZ | <input type="checkbox"/> Form 990-T (trust other than above) | <input type="checkbox"/> Form 6069 |
| <input type="checkbox"/> Form 990 PF | <input type="checkbox"/> Form 1041-A | <input type="checkbox"/> Form 8870 |

NEIL MCLEAN

- The books are in the care of ► **COLUMBIA, SC - 29250**
Telephone No ► **(803)-783-1507** FAX No. ► _____
- If the organization does not have an office or place of business in the United States, check this box
- If this is for a Group Return, enter the organization's four digit Group Exemption Number (GEN) _____. If this is for the whole group, check this box . If it is for part of the group, check this box and attach a list with the names and EINs of all members the extension will cover

1 I request an automatic 3-month (6-months for a corporation required to file Form 990-T) extension of time until **FEBRUARY 15, 2010**, to file the exempt organization return for the organization named above. The extension is for the organization's return for
 ► calendar year _____ or
 ► tax year beginning **JUL 1, 2008**, and ending **JUN 30, 2009**

2 If this tax year is for less than 12 months, check reason: Initial return Final return Change in accounting period

3a If this application is for Form 990-BL, 990-PF, 990-T, 4720, or 6069, enter the tentative tax, less any nonrefundable credits. See instructions.	3a	\$
b If this application is for Form 990-PF or 990-T, enter any refundable credits and estimated tax payments made. Include any prior year overpayment allowed as a credit.	3b	\$
c Balance Due. Subtract line 3b from line 3a. Include your payment with this form, or, if required, deposit with FTD coupon or, if required, by using EFTPS (Electronic Federal Tax Payment System). See instructions.	3c	\$ N/A

Caution. If you are going to make an electronic fund withdrawal with this Form 8868, see Form 8453-EO and Form 8879-EO for payment instructions